

BELLA ROSA EAST

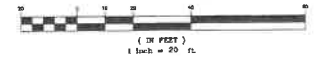
BEING A PORTION OF SECTION 5, TOWNSHIP 33 SOUTH, RANGE 39 EAST, INDIAN RIVER COUNTY, FLORIDA
 COVENANTS, RESTRICTIONS OR RESERVATIONS AFFECTING THE OWNERSHIP OR USE OF THE PROPERTY SHOWN IN THIS PLAT ARE
 FILED IN OFFICIAL RECORD BOOK 2219, PAGE 1763 PUBLIC RECORDS OF INDIAN RIVER COUNTY, FLORIDA (THE "ORIGINAL
 DECLARATION"), AS AMENDED IN OFFICIAL RECORD BOOK 3233, PAGE 1938, OF THE PUBLIC RECORDS OF INDIAN RIVER COUNTY,
 FLORIDA (AMENDED DECLARATION OF COVENANTS), AS SUPPLEMENTED IN OFFICIAL RECORD BOOK _____, PG. _____,
 OF THE PUBLIC RECORDS OF INDIAN RIVER COUNTY, FLORIDA ("SUPPLEMENTAL DECLARATION").

PLAT BOOK _____
 PAGE _____
 CFN _____
 CLERK'S FILE NO. _____



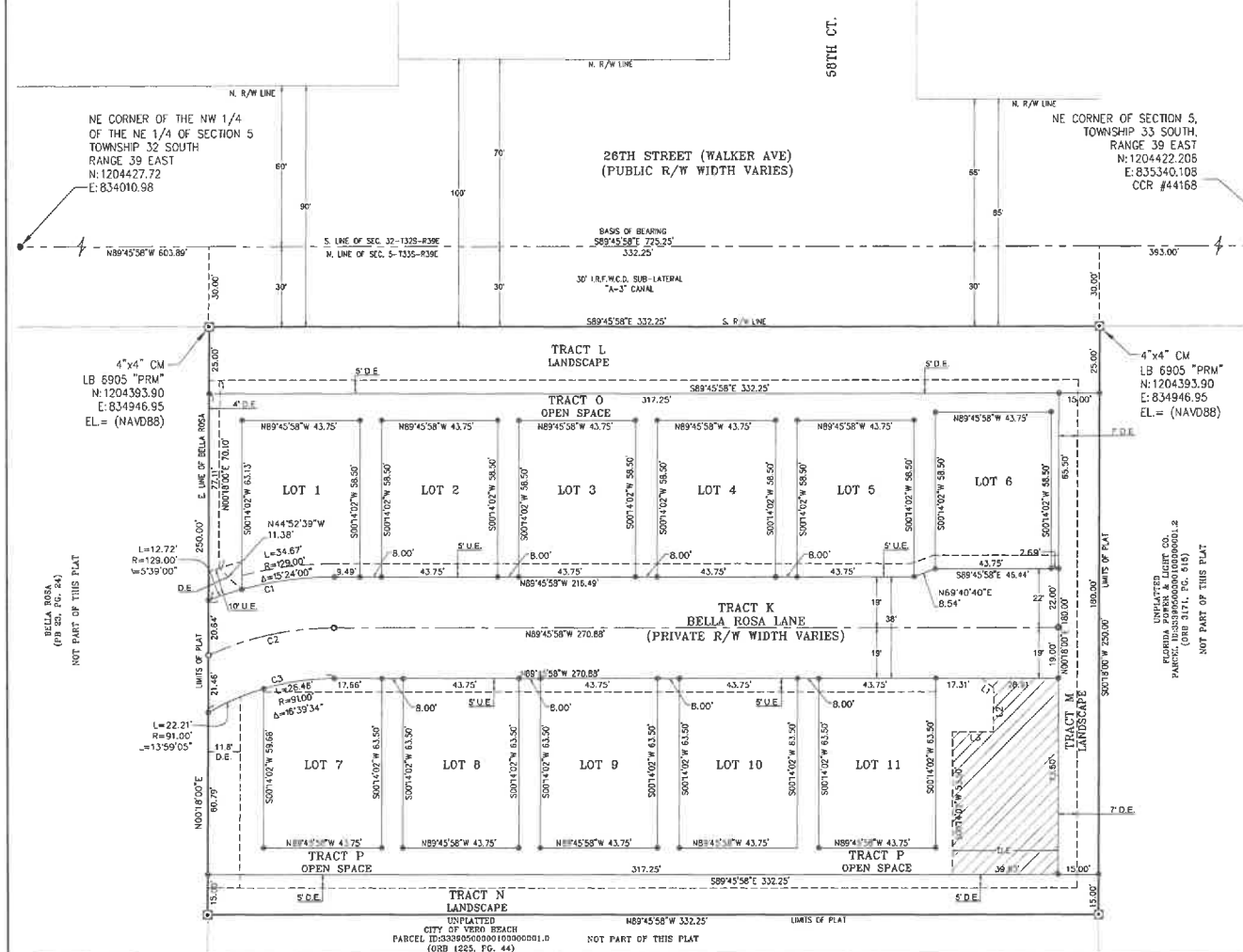
NORTH

GRAPHIC SCALE



Line Table		
LINE	LENGTH	BEARING
L1	5.90'	S52°24'43"E
L2	16.42'	S0°14'02"W
L3	15.50'	N89°45'58"W

Curve Table					
CURVE	LENGTH	RADIUS	Δ	CH. BEARING	CH. LENGTH
C1	47.38'	129.00'	21°03'00"	S79°42'32"W	47.13'
C2	47.85'	110.00'	24°55'32"	S77°46'16"W	47.48'
C3	48.67'	91.00'	30°38'39"	S74°54'42"W	48.05'



- ABBREVIATIONS**
- L = ARC LENGTH
 - Δ = CENTRAL ANGLE
 - CH. = CHORD
 - C.M. = CONCRETE MONUMENT
 - D.E. = DRAINAGE EASEMENT
 - I.R.F.W.C.D. = INDIAN RIVER FARMERS WATER CONTROL DISTRICT
 - IRC = IRON ROD WITH CAP
 - L.S. = LAND SURVEYING BUSINESS
 - NAVD = NORTH AMERICAN VERTICAL DATUM
 - ORB = OFFICIAL RECORD BOOK
 - OR = OVERALL
 - PG. = PAGE
 - PCP = PERMANENT CONTROL POINT
 - PRM = PERMANENT REFERENCE MONUMENT
 - PBS = PLAT BOOK ST. LUCIE COUNTY
 - POB = POINT OF BEGINNING
 - POC = POINT OF COMMENCEMENT
 - P.C. = POINT OF CURVATURE
 - P.L.S. = PROFESSIONAL LAND SURVEYOR
 - R = RADIUS
 - RAW = RIGHT OF WAY
 - S.M.E. = STORMWATER MAINTENANCE EASEMENT
 - U.E. = UTILITY EASEMENT
- SYMBOL LEGEND**
- ☐ SET 4"x4" CONCRETE PERMANENT REFERENCE MONUMENT (PRM) LB#6905. FOUND MONUMENTS WILL BE NOTED AS FOUND
 - LOT CORNER MARKER 5/8" IRC, LB#6905
 - PERMANENT CONTROL POINT (PCP) LB# 6905
 - POINT OF INTERSECTION

UNPLATTED
 PARCEL ID: 3339050000100000002.0
 (ORB 3472, PG. 2207)
 NOT PART OF THIS PLAT

UNPLATTED
 PARCEL ID: 3339050000100000002.2
 (ORB 1147, PG. 493)
 NOT PART OF THIS PLAT

UNPLATTED
 PARCEL ID: 3339050000100000002.1
 (ORB 1043, PG. 836)
 NOT PART OF THIS PLAT

HOUSTON, SCHULKE, BITTLE, & STODDARD, INC. D/B/A
MERIDIAN
 LAND SURVEYORS
 1717 INDIAN RIVER BLVD, SUITE 201
 VERO BEACH, FL 33490
 PHONE: 772-794-1313, FAX: 772-794-1096
 EMAIL: INFO@MLS-LB6905.COM

SHEET
3 of 3