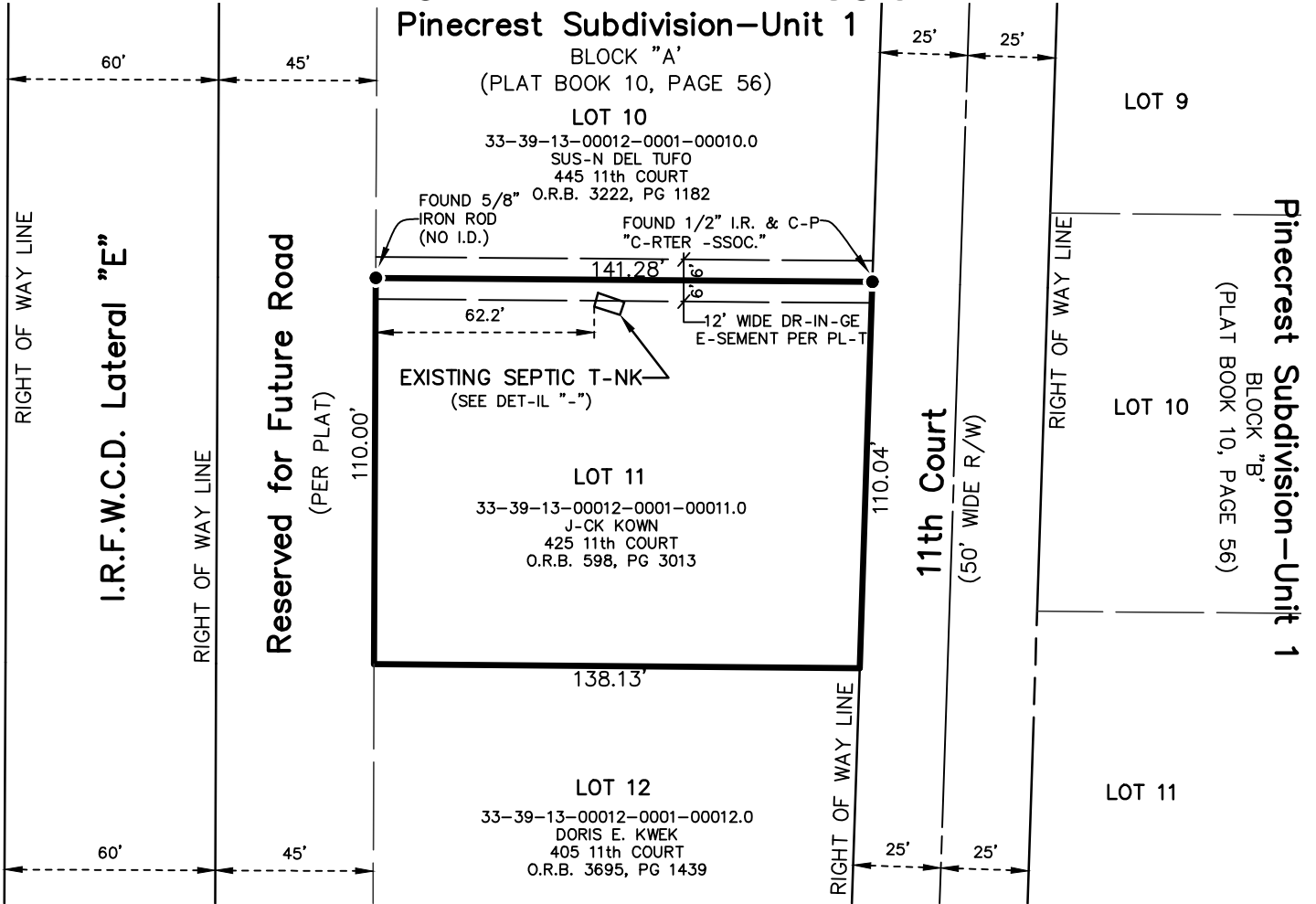
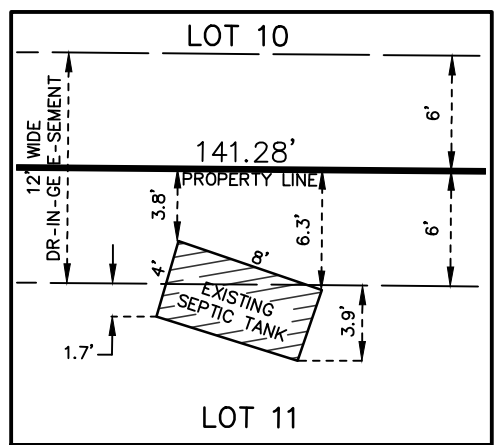


# Exhibit for Lot 11, Pinecrest Subdivision for INDIAN RIVER COUNTY



- Legend and Abbreviations**
- ESMT = EASEMENT
  - F.P.&L = FLORIDA POWER & LIGHT
  - I.R.F.W.C.D. = INDIAN RIVER FARMS WATER CONTROL DISTRICT
  - I.R. & CAP = IRON ROD & CAP
  - L = LENGTH OF ARC
  - LLC = LIMITED LIABILITY COMPANY
  - N.E. = NORTHEAST
  - O.R.B. = OFFICIAL RECORD BOOK
  - (P) = PLAT
  - P.B. = PLAT BOOK
  - PGE = PAGE



Detail "A"  
SCALE 1"=10'

This is not a Boundary Survey

AGENCY: INDIAN RIVER COUNTY, FL PUBLIC WORKS DEPT./ENGINEERING DIVISION	
DATE: 11/05/2024	DRAWN BY: R. INGLETT
SCALE: 1"=50'	APPROVED BY: D. SILON
SHEET: 1 OF 1	JOB NO: 2024D

Exhibit at Lot 11,  
Pinecrest Subdivision  
for:  
INDIAN RIVER COUNTY