

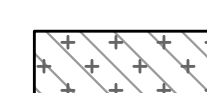


Maximum Potential 100-Yr Floodplain Volume Waiver Calculation				
	Hammock Shores	Offsite 1	Offsite 2	Offsite 3
Developable Area (DA) (ac)	60.07	14.44	1.88	14.39
Average Existing Grade (ft)	3.60	1.33	0.83	2.03
Normal Water Elevation (ft)	1.70	0.50	0.50	0.50
FEMA 10-Year Elevation (ft)	3.70			
FEMA 100-Year Elevation (ft)	6.40			
Waiver Requested (cy)	84,035			
Waiver Requested (ac-ft)	52.09			
Calculation of Potential 100-Yr Waiver while Meeting 10-Yr Cut-Fill (Off-Site Areas)				
Fill Depth (FEMA 100-Yr) (ft)	5.08	5.57	4.37	
Max Fill Volume (FEMA 100-Yr) (ac-ft)* (Assume 70% Site is Filled)	51.35	7.33	44.02	
			102.7	

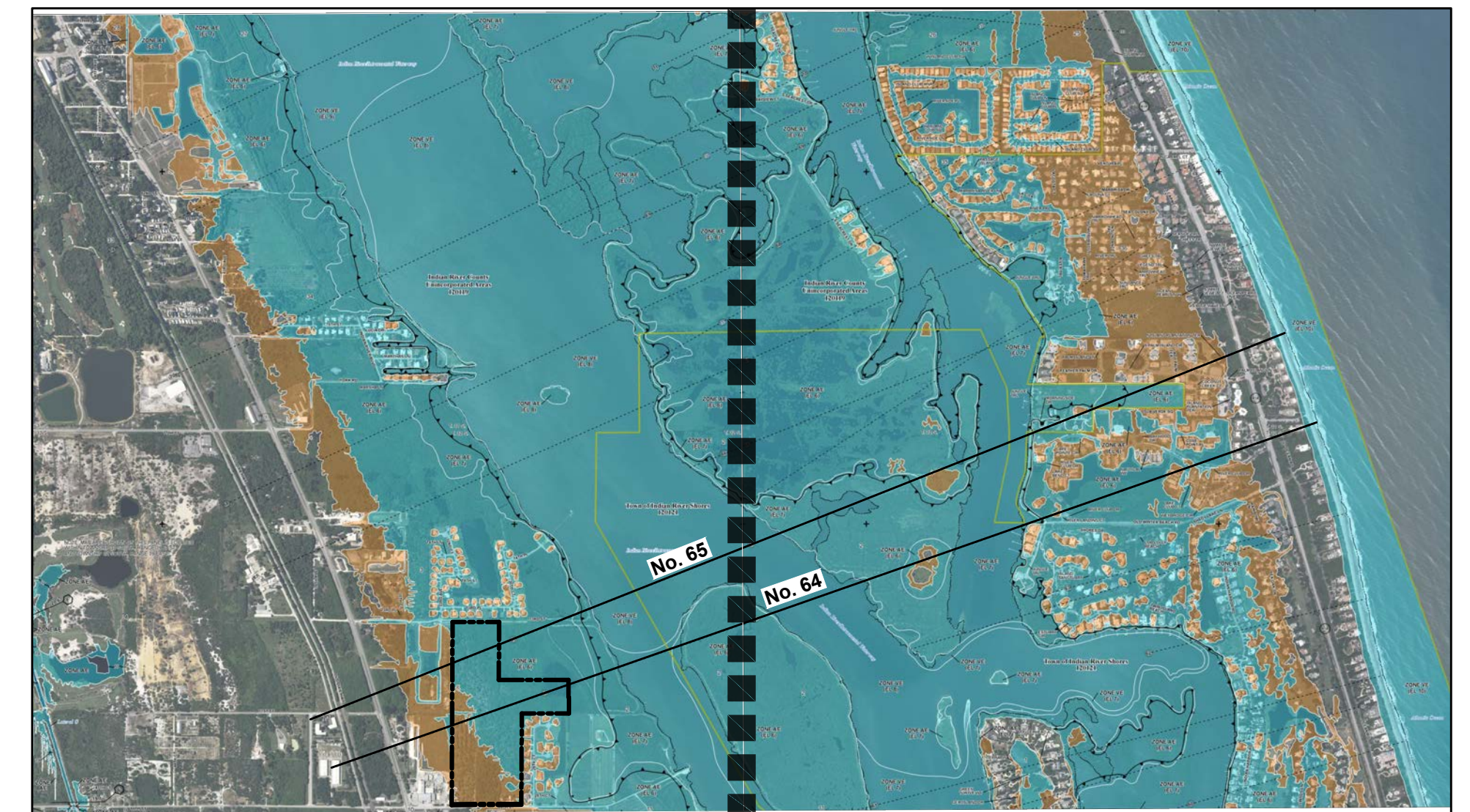
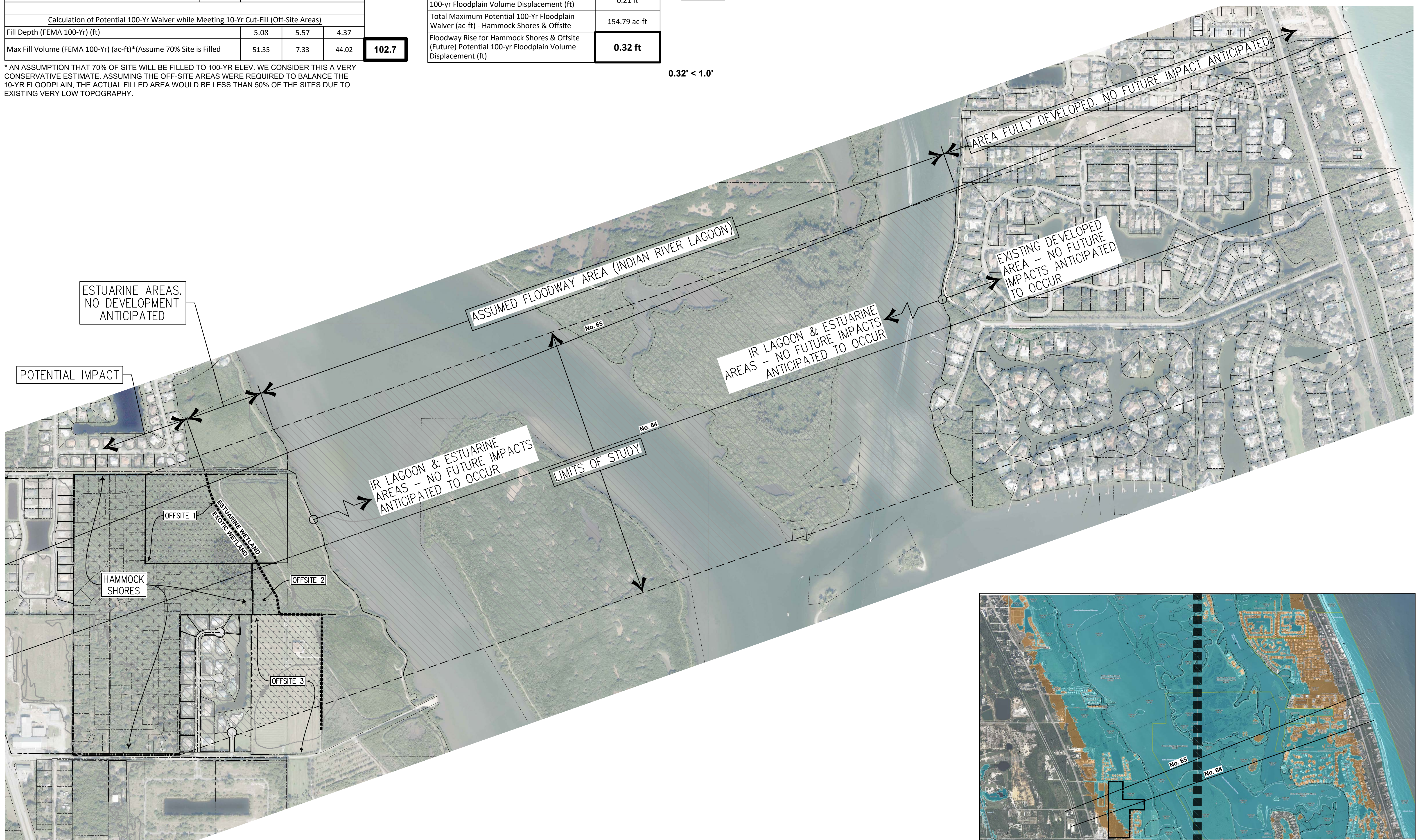
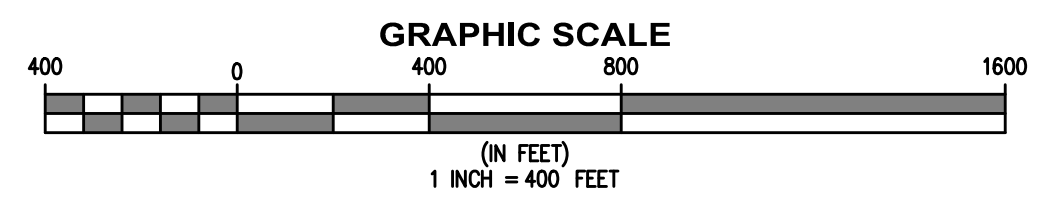
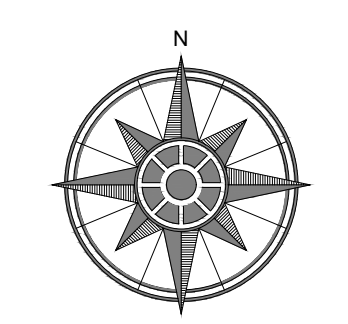
* AN ASSUMPTION THAT 70% OF SITE WILL BE FILLED TO 100-YR ELEV. WE CONSIDER THIS A VERY CONSERVATIVE ESTIMATE. ASSUMING THE OFF-SITE AREAS WERE REQUIRED TO BALANCE THE 10-YR FLOODPLAIN, THE ACTUAL FILLED AREA WOULD BE LESS THAN 50% OF THE SITES DUE TO EXISTING VERY LOW TOPOGRAPHY.

Maximum Potential 100-Yr Floodplain Volume Waiver Calculation	
Assumed Floodway Area (ac)	480 ac
Hammock Shores' Requested 100-Yr Floodplain Waiver (ac-ft)	52.09 ac-ft
Floodway Rise per Hammock Shores' 100-yr Floodplain Volume Displacement (ft)	0.11 ft
Total Maximum Potential 100-Yr Floodplain Waiver (ac-ft) - Potential Off-Site Development Sites	102.7 ac-ft
Floodway Rise for Offsite (Future) Potential 100-yr Floodplain Volume Displacement (ft)	0.21 ft
Total Maximum Potential 100-Yr Floodplain Waiver (ac-ft) - Hammock Shores & Offsite	154.79 ac-ft
Floodway Rise for Hammock Shores & Offsite (Future) Potential 100-yr Floodplain Volume Displacement (ft)	0.32 ft

0.32' < 1.0'

HATCH LEGEND

-  HAMMOCK SHORES (40.6 AC)
-  OFF-SITE DEVELOPABLE AREAS (30.71 AC)
-  ASSUMED FLOODWAY (480 AC)



FIRM No. 12061C0231J

FIRM No. 12061C0232J

LAST SAVED: 11/13/2023 9:58:42 AM. SAVED BY: JOHN T. DRAWING: J-2021021-077 GH0 HAMMOCK SHORES C:\PRODUCTION DRAWINGS\PRELIMINARY\PLAT\21-077 100-YR FLOODWAY RISE EXHIBIT DWG. PLOT DATE: 11/13/2023 9:59:06 AM. PLOTTED BY: JOHN T.

DATE	REVISION	MARK	DESIGNED BY: AWS	DRAWN BY: JT	CHECKED BY: AWS	AS NOTED	DATE
							08/19/22

SCHULKE, BITTLE & STODDARD, L.L.C.
 CIVIL & STRUCTURAL ENGINEERING • LAND PLANNING • ENVIRONMENTAL PERMITTING
 1717 INDIAN RIVER BLVD., SUITE 201 VERO BEACH, FLORIDA 32960
 TEL: 772 / 770-9822 FAX: 772 / 770-9496 EMAIL: info@sbsengineers.com

100-YR FLOODWAY RISE CALCULATION & EXHIBIT

GH0 HAMMOCK SHORES
 SUBDIVISION
 VERO BEACH, FLORIDA
 INDIAN RIVER COUNTY

ENGINEER CERTIFICATION
 JOSEPH W. SCHULKE
 FL. REG. NO. 47348
 JODAH B. BITTLE
 FL. REG. NO. 57396
 WILLIAM P. STODDARD
 FL. REG. NO. 57605

DATE: SHEET
EXHIBIT G
 PROJECT NO. 21-077