


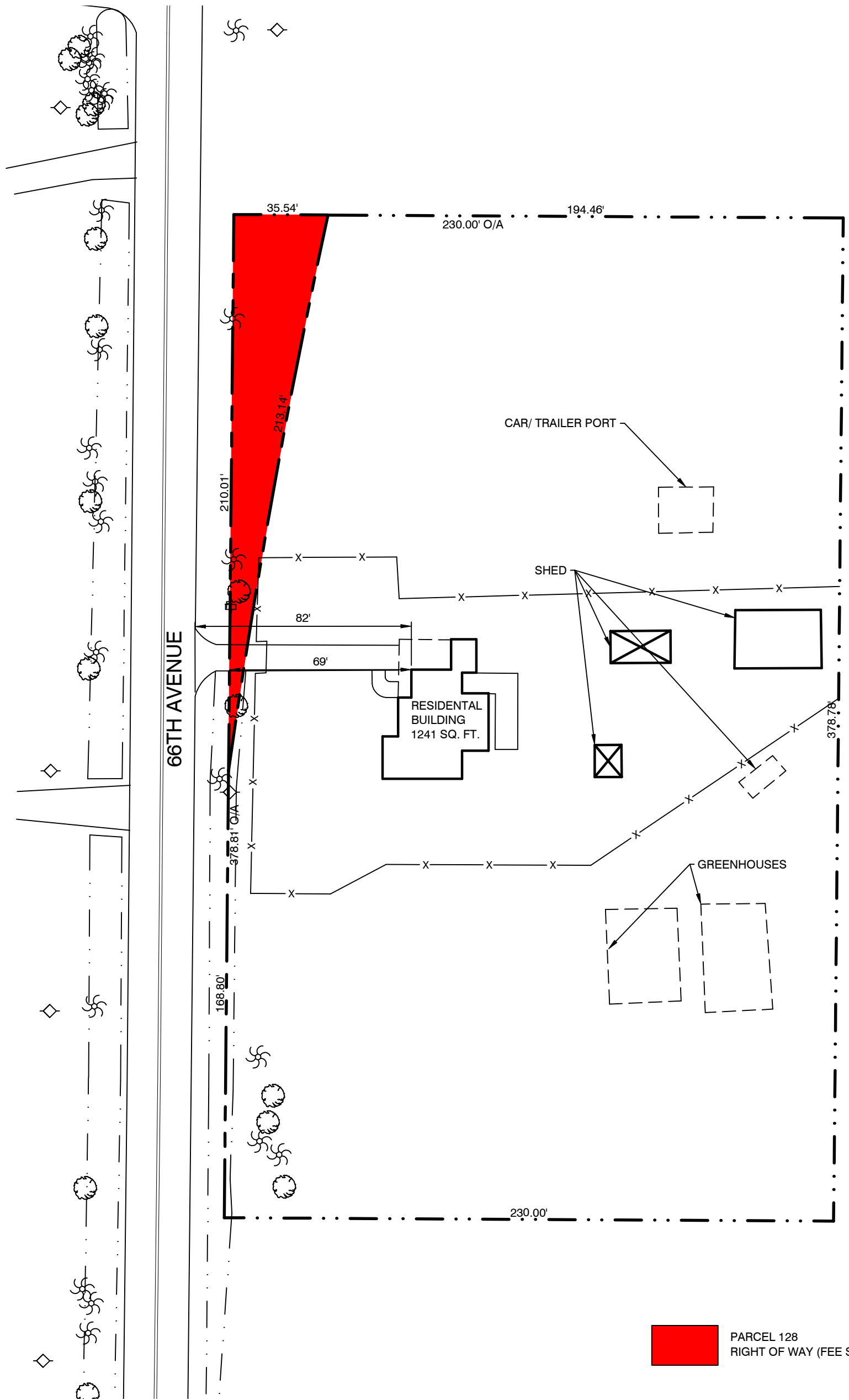
**BEFORE TAKE  
66TH AVENUE  
GANBIN & JACKSON  
PARCEL 128**


  
N  
SCALE: 1"=40'

**LMA**  
Landon, Moree & Associates, Inc.  
Civil & Environmental Engineers - Planners - Surveyors  
31622 U.S. 19 North Palm Harbor, Florida 34684  
Phone: (727) 789-5010, Fax: (727) 787-4394  
Toll Free: (800) 262-7960, [WWW.LMAENGR.COM](http://WWW.LMAENGR.COM)

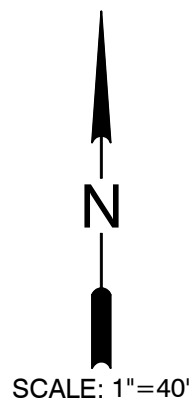
LMA JOB #: 681-08.128

# BEFORE TAKE 66TH AVENUE GANBIN & JACKSON PARCEL 128



 **PARCEL 128**  
RIGHT OF WAY (FEE SIMPLE)

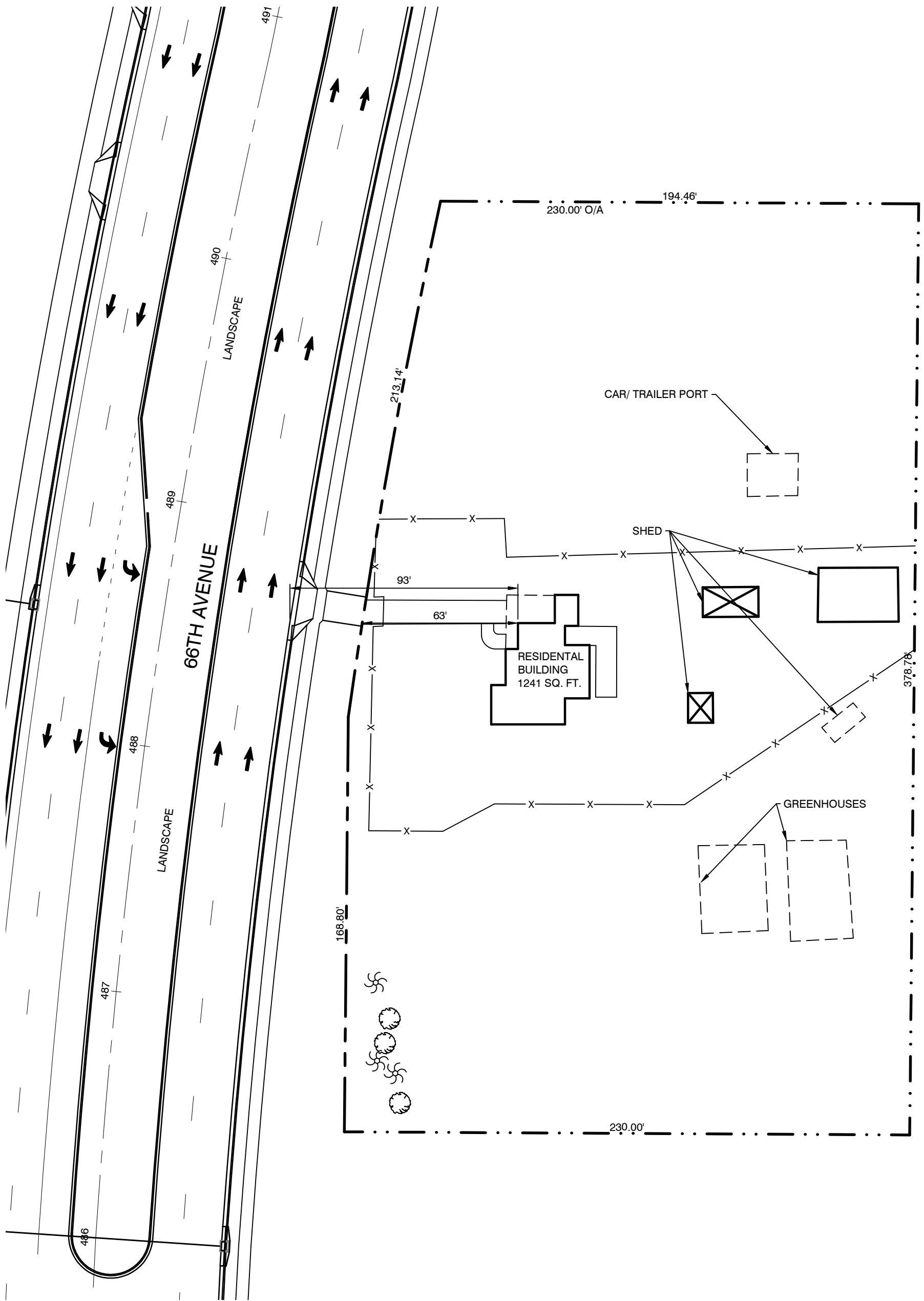
PARENT TRACT: 87,119 S.F./ 2.0000 AC.  
 PARCEL 128: 3,456 S.F./ 0.0793 AC.  
 REMAINDER: 83,663 S.F./ 1.9206 AC.



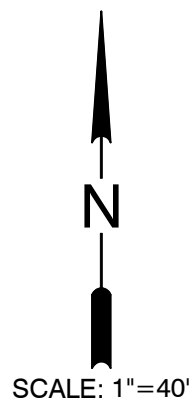
**LMA**  
 Landon, Moree & Associates, Inc.  
 Civil & Environmental Engineers - Planners - Surveyors

31622 U.S. 19 North Palm Harbor, Florida 34684  
 Phone: (727) 789-5010, Fax: (727) 787-4394  
 Toll Free: (800) 262-7960, WWW.LMAENGR.Com

LMA JOB #: 681-08.128



**AFTER TAKE  
66TH AVENUE  
GANBIN & JACKSON  
PARCEL 128**



**LMA**  
Landon, Moree & Associates, Inc.  
Civil & Environmental Engineers - Planners - Surveyors

31622 U.S. 19 North Palm Harbor, Florida 34684  
Phone: (727) 789-5010, Fax: (727) 787-4394  
Toll Free: (800) 262-7960, WWW.LMAENGR.Com

LMA JOB #: 681-08.128