

Exhibit A

SCOPE OF SERVICES

ENGINEERING CONSULTING SERVICES

Design Services For

Construction of Pavement on 32nd Ave, 43rd Place, and 44th St

Prepared for:

**Indian River County
1801 27th Street
Vero Beach, FL 32960**

Prepared by:

**Johnson, Mirmiran & Thompson, Inc.
3250 West Commercial Boulevard, Suite 360
Ft Lauderdale, FL 33309**

May 2025

TABLE OF CONTENTS

I.	PROJECT TITLE	3
II.	OBJECTIVE	3
III.	PROJECT DESCRIPTION	3
IV.	PROJECT SCOPE OF WORK.....	3
V.	SUBMITTAL/DELIVERABLES	6
VI.	REPORTING.....	6
VII.	SCHEDULE/LENGTH OF SERVICE	6

SCOPE OF SERVICES FOR ENGINEERING CONSULTING SERVICES

This Exhibit forms an integral part of the agreement between Indian River County (hereinafter referred to as the COUNTY) and Johnson, Mirmiran & Thompson (hereinafter referred to as the CONSULTANT) relative to the transportation facility described as follows:

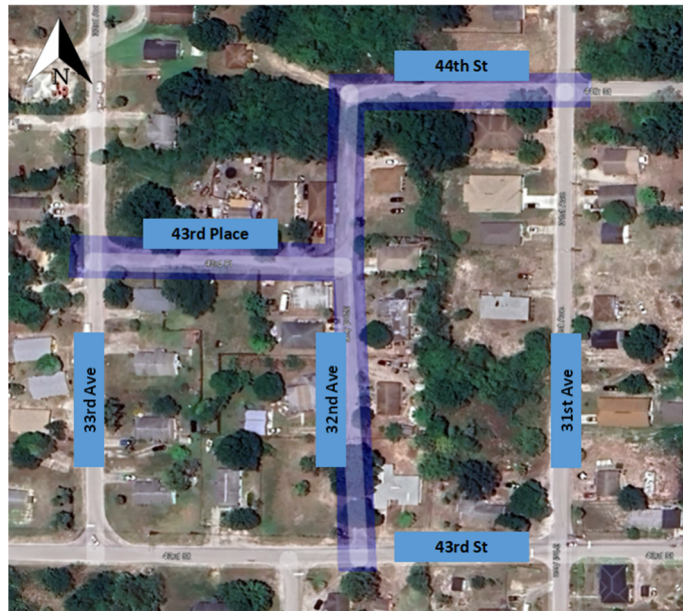
I. PROJECT TITLE

Professional Engineering Services for the Construction of Pavement on 32nd Ave, 43rd Place, and 44th St.

II. OBJECTIVE

The purpose of this project is to develop construction plans for the construction of pavement and drainage facilities along 550' of 32nd Ave (from of 43rd St to 44th St); 310' of 43rd Pl (from 33rd Ave to 32nd Ave); and 260' of 44th St (from 32nd Ave to 31st Ave); see **Figure 1** below.

Figure 1 – Project Limits



III. PROJECT DESCRIPTION

A complete set of bid documents will be developed for the unpaved roadways of 32nd Ave (from of 43rd St to 44th St), 43rd Pl (from 33rd Ave to 32nd Ave), and 44th St (from 32nd Ave to 31st Ave) to construct new asphalt pavement and associate drainage facilities. The COUNTY will provide any survey already obtained for the project location.

IV. PROJECT SCOPE OF WORK

1. Project General:

- Contract Maintenance and Project Documentation – Includes document management, schedule updates, progress Reports
- Client/Progress Meetings – Includes two one-hour meetings per month
- Field Reviews – Includes one field review (two attendees)

- Coordination – Required for collaborating with geotechnical professional for design parameters
- Development of Project Specifications
- Development of Project Cost Estimates – Includes one cost estimate for each submittal phase

2. Roadway Design:

- Master Design File Setup & Maintenance, Model Management Plan – Includes initial CADD file setup for files needed for plan development
- Horizontal/Vertical Master Design Files/3D Geometrics – Approximately 0.25 miles of project length along 32nd Ave, 43rd Pl, and 44th St
- Temporary Traffic Control Plans Phasing/Analysis – Development of TTCP concept and reference files for quantities
- Quantities
- QA/QC

3. Roadway Plans/Deliverables:

- Key Sheet/Signature Sheet
- Typical Section and Paving Details Sheet
- General Notes Sheet
- Project Layout Sheet
- Plan/Profile Sheets (including Signing and Pavement Markings, and Utilities)
- Temporary Traffic Control Plans Sheets – General TTCP notes, phasing notes and typical sections, detour sheet
- Standard Details (from FDOT Standard Plans)
- Summary of Quantities Tables/Sheets
- QA/QC
- Supervision

4. Drainage Design

- Delineate Drainage Area
- Calculations – Rational Method for runoff calculations
- Storm Drain Design – Design inlets and size storm drains. The likely outlet will be an existing ditch west of 33rd Ave, which then drains north and ties into the IRFWCD lateral connector under 45th Street.
- Quantities
- QA/QC
- Supervision

5. Drainage Plans/Deliverables

- Conceptual Drainage Memo – Includes all calculations
- Drainage Structures Sheets (Cross Sections) – see Note 5-1 below
- Optional Materials Sheet – see Note 1 below
- Standard Details (from FDOT Standard Plans)
- Summary of Quantities Tables/Sheets
- QA/QC
- Supervision
- NOTE 5-1: For this scope of service, it is assumed that no stormwater attenuation or treatment design is necessary. Should stormwater attenuation and treatment be required, a scope amendment will be provided.
 - IRFWCD: A 2003 memorandum with the Indian River Farms Water Control

District (IRFWCD) indicates that "County roads were made exempt on April 16, 1996 by IRFWCD." Consultant has inquired with IRFWCD and is awaiting a response.

- SJRWMD: This project may meet an exemption for an ERP. FAC 62-330.051(4)(e) indicates that paving existing roads is exempt given certain criteria:
 - (e) Repair, stabilization, paving, or repaving of existing roads, and the repair or replacement of vehicular bridges that are part of the road, where:
 - 1. They were in existence on or before January 1, 2002, and have:
 - a. Been publicly-used and under county or municipal ownership and maintenance thereafter, including when they have been presumed to be dedicated in accordance with Section 95.361, F.S.;
 - b. Subsequently become county or municipally-owned and maintained; or
 - c. Subsequently become perpetually maintained by the county or municipality through such means as being accepted by the county or municipality as part of a Municipal Service Taxing Unit or Municipal Service Benefit Unit; and
 - 2. The work does not realign the road or expand the number of traffic lanes of the existing road, but may include safety shoulders, clearing vegetation, and other work reasonably necessary to repair, stabilize, pave, or repave the road, provided that the work is constructed using generally accepted roadway design standards;
 - 3. Existing bridges are not widened more than is reasonably necessary to properly connect the bridge with the road to match the width of the roadway travel lanes and safely accommodate the traffic expected;
 - 4. No debris from the original bridge shall be allowed to remain in wetlands or other surface waters;
 - 5. Roadside swales or other effective means of stormwater treatment are incorporated as part of the work;
 - 6. No more dredging or filling of wetlands or water of the state is performed than is reasonably necessary to perform the work in accordance with generally accepted roadway design standards;
 - 7. Notice of intent to use this exemption is provided to the Agency 30 days before performing any work; and
 - 8. All work is conducted in compliance with subsection 62-330.050(9), F.A.C.

6. Permitting

- Pre-application meeting with SJRWMD
- Pre-application meeting with IRFWCD
- SJRWMD Verification of Exemption letter
- IRFWCD Review Application
- IRFWCD Connection Application
- NOTE 6-1: It is assumed no waters, wetlands, or rare species are present on site, and no coordination with USACE will be required.
- NOTE 6-2: The COUNTY shall be responsible for fees associated with permit reviews and applications.

7. Utility Coordination

- Identify/Make Utility Contacts (includes acquiring as-built plans) with Utility

- Agencies/Owners (UAOs)
- Identify conflicts and develop conflict matrix
- Develop utility work schedules and/or get commitment for relocation/adjustment from UAOs

8. Geotechnical

- (See Appendix **A** – Subconsultant Services)

V. SUBMITTAL/DELIVERABLES

The following deliverables are associated with this project:

1. One set of biddable contract plans
2. Electronic/CADD files with backup calculations and quantities
3. One engineering cost estimate based on final quantities
4. Specifications package

VI. REPORTING

The consultant shall coordinate any necessary items with the COUNTY's Engineer.

VII. SCHEDULE/LENGTH OF SERVICE

The following is an approximate schedule of deliverables upon NTP:

- Drainage Alternatives Design/Documentation Report (4 weeks)
 - Investigate requirements for conveyance and attenuation, and provide drainage design alternatives
 - Present to County and determine final design concept
- 60% Plans Submittal (6 weeks)
 - Perform geotechnical field investigation and laboratory tests
 - Perform initial utility coordination
 - Perform initial permitting investigation
 - Develop initial (60%) engineering deliverables
- Client comments/input (2 weeks)
- 100% Plans Submittal (4 weeks)
 - Incorporate comments
 - Finalize utility coordination
 - Finalize permitting
 - Develop final (100%) engineering deliverables
- Final comments (1 week)
- Address final comments, provide signed and sealed deliverables (1 week)

**TOTAL
COST SUMMARY FORMAT**

PART I - GENERAL

PROJECT TITLE: 32nd Avenue	Task 001
NAME OF CONSULTANT: Johnson, Mirmiran and Thompson	PROPOSAL DATE 1/0/1900
40 Wight Avenue, Hunt Valley, MD 21030	

PART II - COST SUMMARY

OFFICE DIRECT LABOR	HOURS	HOURLY RATE	ESTIMATED COST	TOTALS
Project Manager	25	\$ 279.00	\$ 6,975.00	
Engineer	46	\$ 204.00	\$ 9,384.00	
Engineering Intern	65	\$ 117.00	\$ 7,605.00	
Senior Engineer	14	\$ 231.00	\$ 3,234.00	
Chief Designer	29	\$ 162.00	\$ 4,698.00	
Chief Engineer	8	\$ 285.00	\$ 2,280.00	
TOTAL OFFICE HOURS	187			
<i>OFFICE DIRECT LABOR SUBTOTAL</i>				\$ 34,176.00
Office Overhead Costs				
Total of Direct Labor & Overhead Costs				\$ 34,176.00
TOTAL PROFESSIONAL FEE				\$ 34,176.00
SUBCONSULTANT(S)			ESTIMATED COST	
Andersen Andre Consulting Engineers, Inc. (SUB-SBE)			\$ 6,585.00	
<i>SUBCONSULTANT(S) - SUBTOTAL</i>			\$ 6,585.00	
OTHER DIRECT COSTS TOTAL				\$ 6,585.00
TOTAL PRICE				\$ 40,761.00