

**100-YEAR FUTURE STORAGE VOLUME**

FORMULA:  
 [ EXISTING STORAGE ] - [ FILL ] + [ CUT ] = [ FUTURE STORAGE ]

CALCULATION:  
 157,548 CY - 113,535 CY + 29,500 CY = 73,513 CY (OR)  
 97.7 AC-FT - 70.4 AC-FT + 18.3 AC-FT = 45.6 AC-FT

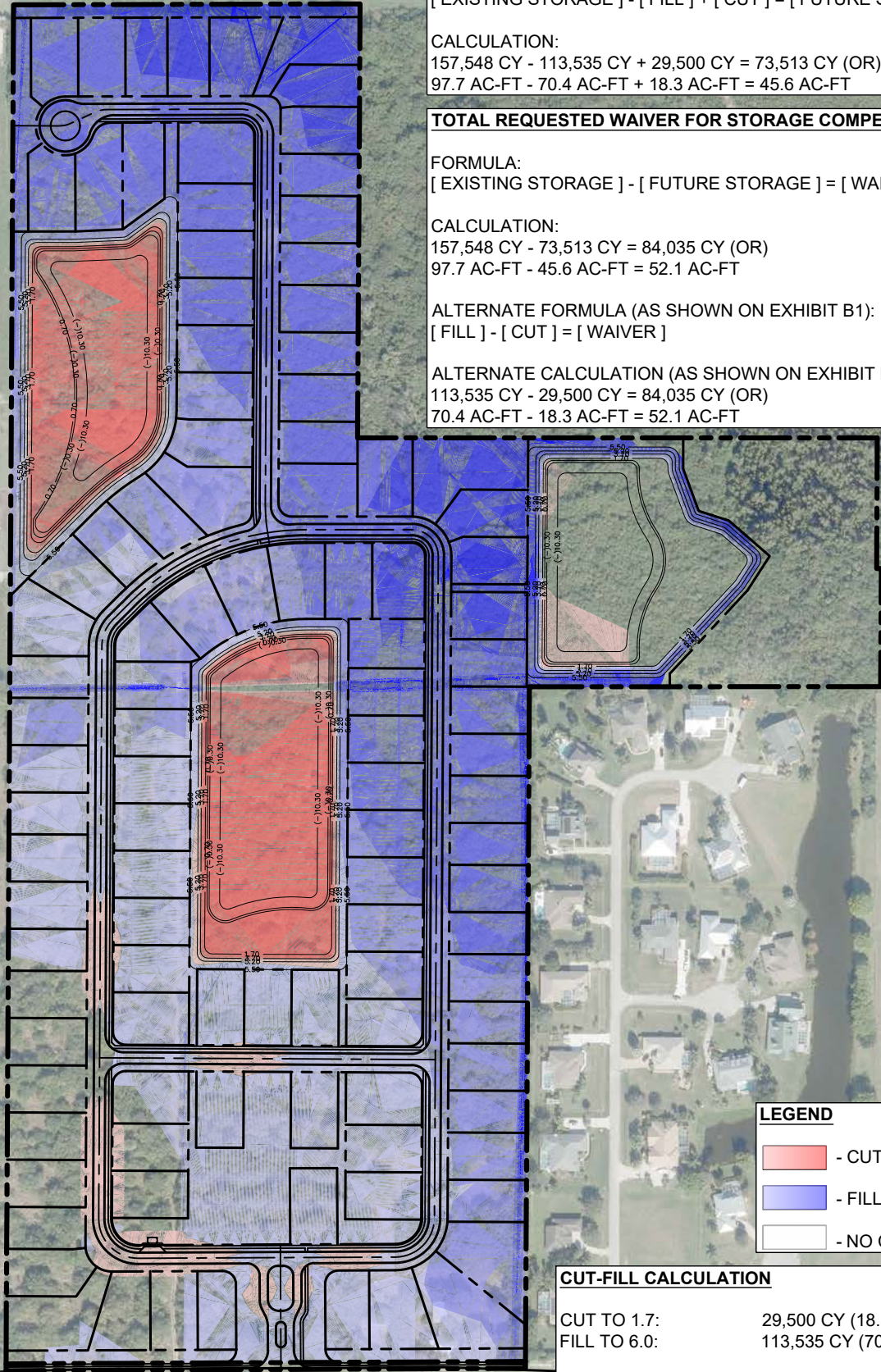
**TOTAL REQUESTED WAIVER FOR STORAGE COMPENSATION**

FORMULA:  
 [ EXISTING STORAGE ] - [ FUTURE STORAGE ] = [ WAIVER ]

CALCULATION:  
 157,548 CY - 73,513 CY = 84,035 CY (OR)  
 97.7 AC-FT - 45.6 AC-FT = 52.1 AC-FT

ALTERNATE FORMULA (AS SHOWN ON EXHIBIT B1):  
 [ FILL ] - [ CUT ] = [ WAIVER ]

ALTERNATE CALCULATION (AS SHOWN ON EXHIBIT B1):  
 113,535 CY - 29,500 CY = 84,035 CY (OR)  
 70.4 AC-FT - 18.3 AC-FT = 52.1 AC-FT



**LEGEND**

- CUT (0.0' - 3.7')
- FILL (0.0' - 4.3')
- NO CUT/FILL

**CUT-FILL CALCULATION**

CUT TO 1.7:	29,500 CY (18.3 AC-FT)
FILL TO 6.0:	113,535 CY (70.4 AC-FT)
<b>NET (FILL):</b>	<b>84,035 CY (52.1 AC-FT)</b>

DRAWING: J:\2021\21-077 GHO HAMMOCK SHORES C3D\PRODUCTION DRAWINGS\EXHIBITS\21-077 CUT-FILL 100YR V2.0.DWG; PLOT DATE: 11/13/2023 9:47:37 AM

**GHO HAMMOCK SHORES**  
 SUBDIVISION  
 VERO BEACH, FLORIDA  
 INDIAN RIVER COUNTY

**CUT-FILL CALC @ 100-YEAR**  
**FLOOD EL. 6.0'NAVD**  
**100 YEAR WAIVER - 103 LOTS**

**SCHULKE, BITTLE & STODDARD, L.L.C.**

CIVIL & STRUCTURAL ENGINEERING • LAND PLANNING • ENVIRONMENTAL PERMITTING  
 REGISTRY #8668

1717 INDIAN RIVER BLVD., SUITE 201 VERO BEACH, FLORIDA 32960  
 TEL 772 / 770-9622 FAX 772 / 770-9496 EMAIL info@sbsengineers.com

**EXHIBIT D**

SCALE: 1"= 300'