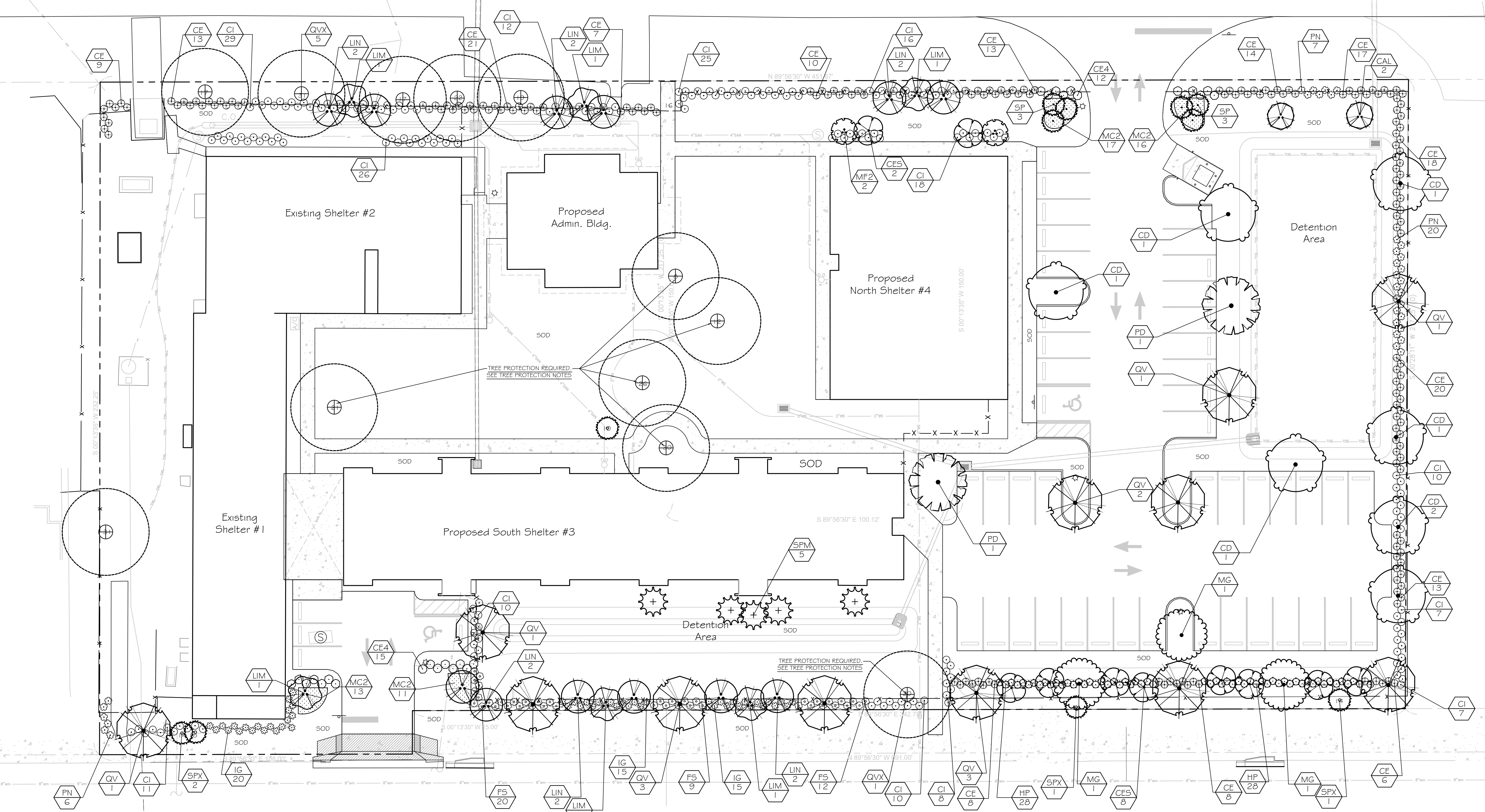


STATE OF FLORIDA
LICENSED LANDSCAPE ARCHITECT
LA6667100

SIGNATURE
DATE

4th Place / Charlie Harris Rd.

4th Street / Citrus Road



HOPE FOR FAMILIES
715 4TH PLACE - VERO BEACH, FL
LANDSCAPE PLAN

© Copyright:
The following drawings are instruments of
service to the Landscape Architect. All
ideas, designs, arrangements, and plans
indicated or represented by the drawing are
owned by and the property of the designer,
and were created, evolved, and developed
for use on and in connection with the
specified project. None of such ideas,
designs, arrangements, or plans shall be
used by or disclosed to any person, firm, or
corporation for any purpose whatsoever
without the written permission of the
designer.

Job No. 23023
Drawn By RP
Checked By RP
Approved By
Submission Dates 9-29-23

Revision Dates 11-20-23

