

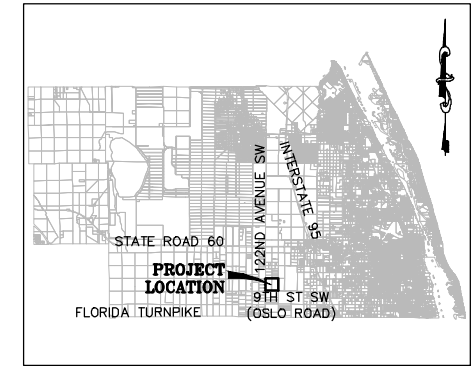
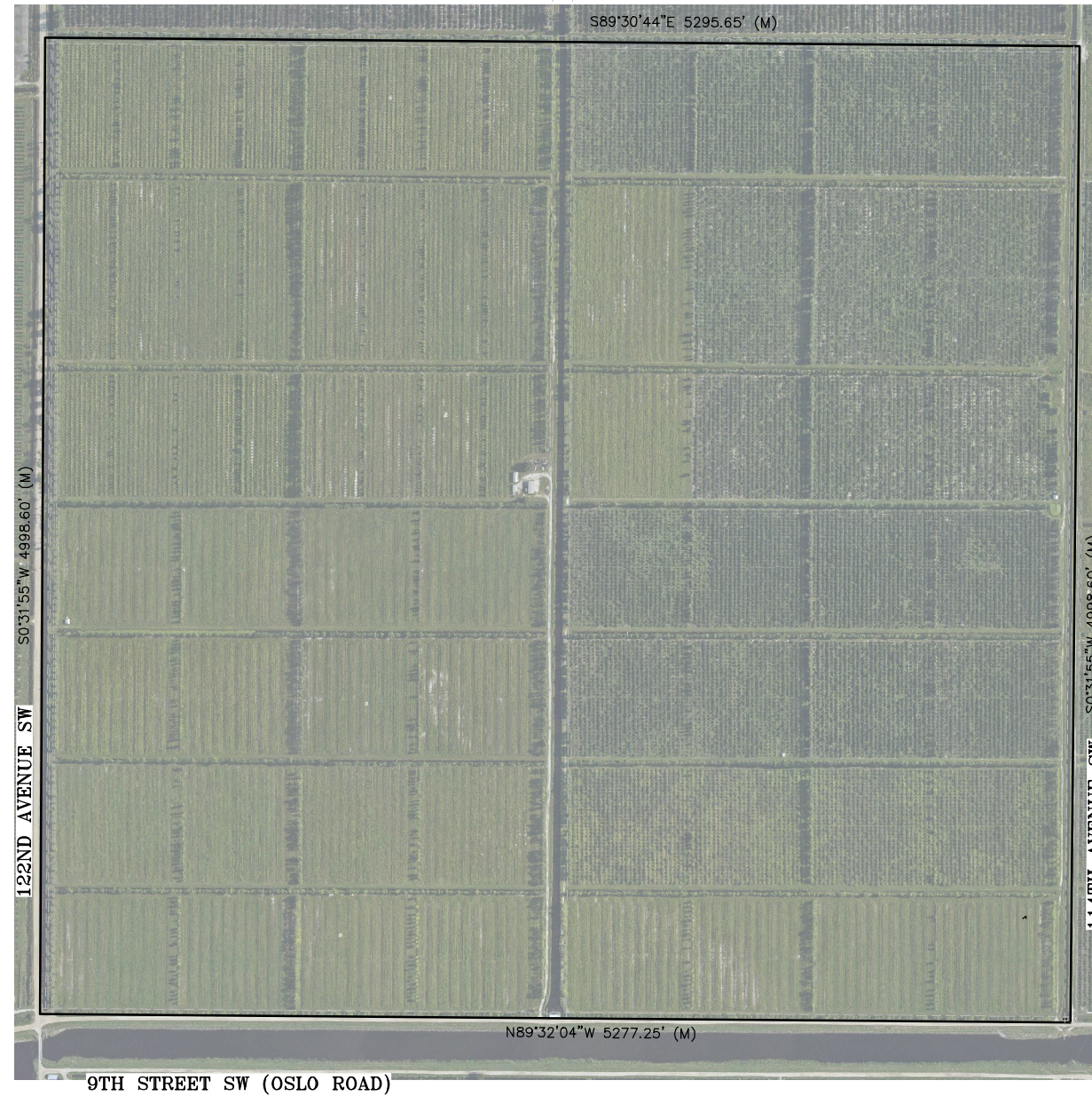
F:\Proj-2018\18-060 FPL - Campbell Groves (Indian River County) ± 580 acres - ALTA Survey\Eng\18-060 Site Plan Graphic Exhibit 24-36.dwg Plotted: 6/28/2019 4:10 PM By: RAUL NUÑO

ZONING: A-2 (AGRICULTURAL)
LAND USE: AG-2 (AGRICULTURAL)

ZONING: A-2 (AGRICULTURAL)
LAND USE: AG-2 (AGRICULTURAL)

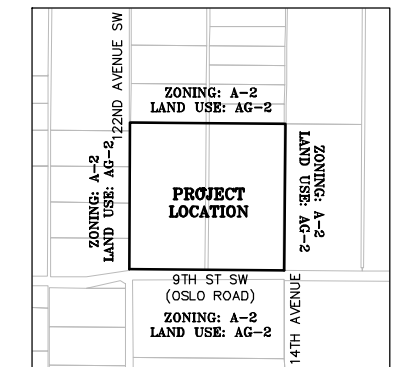
ZONING: A-2 (AGRICULTURAL)
LAND USE: AG-2 (AGRICULTURAL)

ZONING: A-2 (AGRICULTURAL)
LAND USE: AG-2 (AGRICULTURAL)



LOCATION MAP N.T.S.

SECTION 19, TOWNSHIP 33 SOUTH, RANGE 38 EAST
INDIAN RIVER COUNTY, FLORIDA



VICINITY MAP 1"=3000'

SECTION 19, TOWNSHIP 33 SOUTH, RANGE 38 EAST
INDIAN RIVER COUNTY, FLORIDA



COMPUTER FILE REF.	FIELD BK./PG.

CULPEPPER & TERPENING, INC
CONSULTING ENGINEERS | LAND SURVEYORS
2980 SOUTH 25th STREET • FORT PIERCE, FLORIDA 34981
151 SW FLAGLER AVENUE • STUART, FLORIDA 34994
PHONE: 772-464-3537 • FAX: 772-464-9497 • www.ct-eng.com
STATE OF FLORIDA CERTIFICATION No. LB 4286

REV.	- REVISIONS -	BY	DATE

	BY	DATE
DESIGNED	JK	3/13/19
CALCS.	JK	3/13/19
DRAWN	RN	3/13/19
DETAILED	RN	3/13/19
CHECKED	JK	6/27/19
APPROVED	JPT	6/27/19

FPL ORANGE BLOSSOM SOLAR ENERGY CENTER

SITE AERIAL

DATE: 6/27/19
HORIZ. SCALE: NA
VERT. SCALE: NA
JOB No. 18-060
SHEET 1 of 1