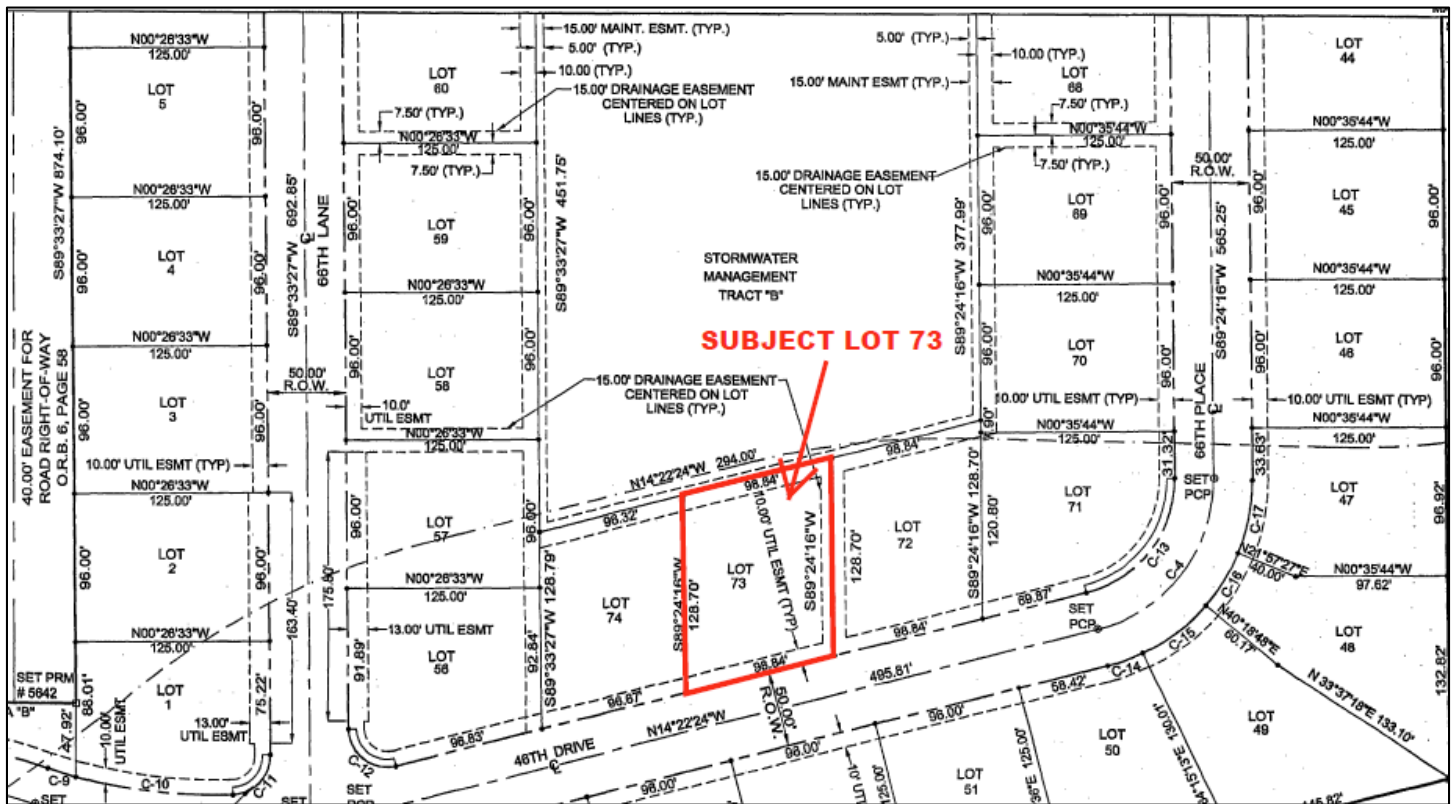


Maps of Easement

Plat Map of Crystal Falls of Vero Showing Subject Lot 73 from Platbook 16 Page 95.



Paragraph 3 of Platbook 16 Page 95 describing drainage easements.

3) THE DRAINAGE EASEMENTS, STORMWATER MANAGEMENT TRACTS "A," "B," "C," AND "D" AND MAINTENANCE EASEMENTS, AS SHOWN, ARE DEDICATED IN PERPETUITY FOR CONSTRUCTION AND MAINTENANCE OF DRAINAGE FACILITIES AND SHALL BE THE PERPETUAL MAINTENANCE OBLIGATION OF THE CRYSTAL FALLS PROPERTY OWNER'S ASSOCIATION, INC. FRONT YARD DRAINAGE EASEMENTS ARE SUBJECT TO THE RIGHT OF EACH LOT TO HAVE A DRIVEWAY FOR INGRESS / EGRESS AS APPROVED BY THE COUNTY.

[illegible]