

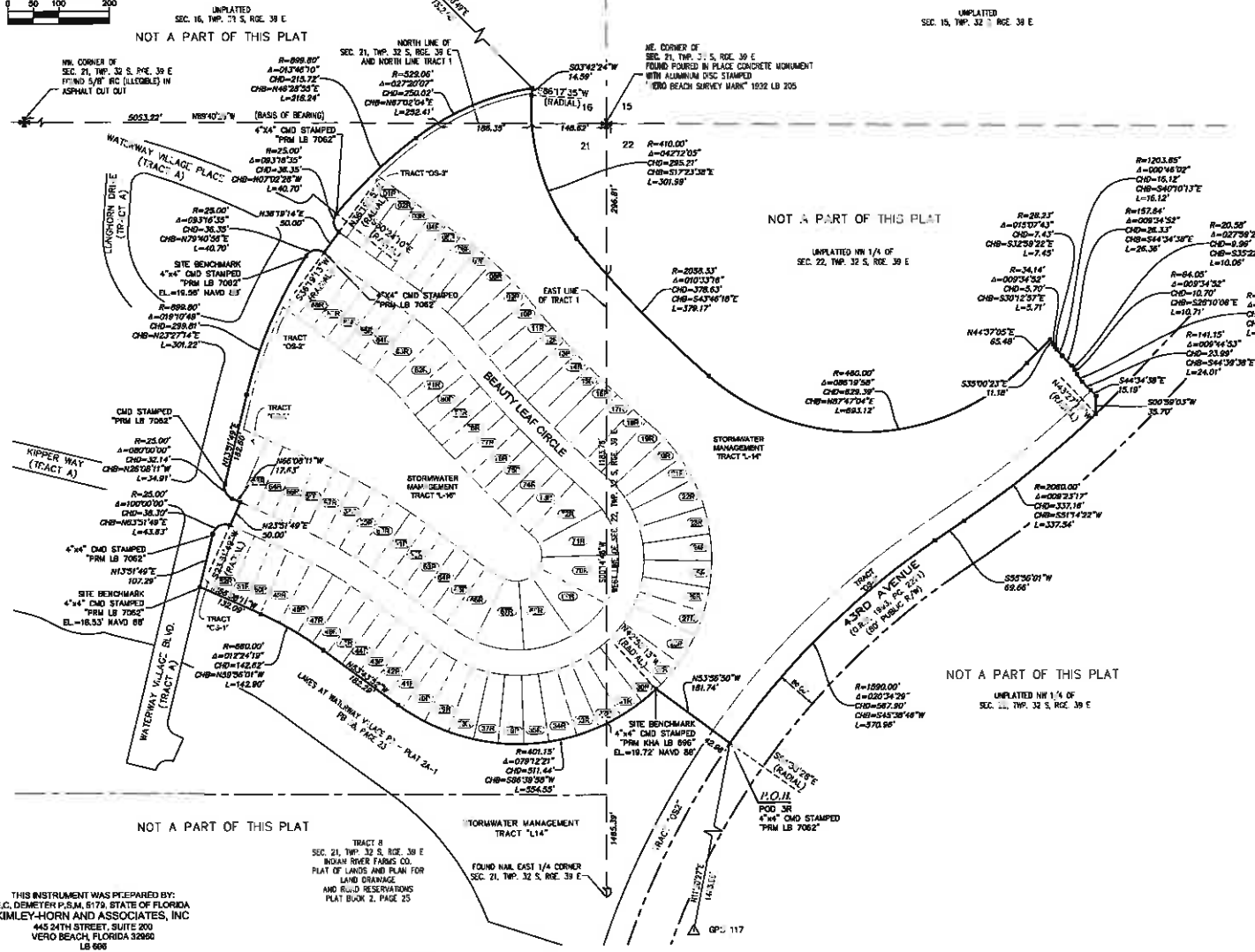
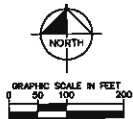
LAKES AT WATERWAY VILLAGE PD - POD 3R

BEING A REPLAT OF A PORTION OF TRACT 1, SECTION 21, TOWNSHIP 32 SOUTH, RANGE 39 EAST, INDIAN RIVER FARMS CO. PLAT OF LANDS AND PLAN FOR LAND DRAINAGE AND ROAD RESERVATIONS, ACCORDING TO THE PLAT THEREOF, AS RECORDED IN PLAT BOOK 2, PAGE 25, PUBLIC RECORDS OF ST. LUCIE COUNTY, FLORIDA, NOW BEING IN INDIAN RIVER COUNTY, FLORIDA, AND A PORTION OF THE NORTH-WEST ONE-QUARTER (NW. 1/4) OF SECTION 22, TOWNSHIP 32 SOUTH, RANGE 39 EAST AND A PORTION OF THE SOUTHEAST ONE-QUARTER (SE. 1/4) OF SECTION 16, TOWNSHIP 32 SOUTH, RANGE 39 EAST, INDIAN RIVER COUNTY, FLORIDA

PLAT BOOK _____

PAGE _____

DOCKET NUMBER _____

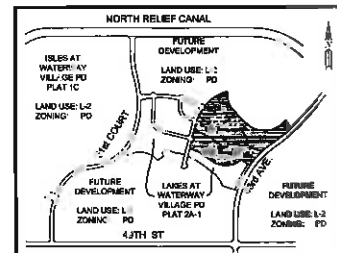


LEGEND OF SYMBOLS

- PLAT BOUNDARY
- PARCEL LINE
- DRAINAGE BASINMENT LINE
- UTILITY BASINMENT LINE
- ROAD CENTER LINE
- SECTION LINE
- MATCH LINE
- LOT NUMBER
- PRM, 4x4 CMO STAMPED *PRM BUBBLS 800' OR AS NOTED
- PCP, NAIL AND DISC STAMPED *PRM NAIL LB 600'
- LOT CORNER

ABBREVIATIONS

- A DELTA (CENTRAL ANGLE)
- CS CHORD BEARING
- CDR CERTIFIED DRAWER RECORD
- CHRD CHORD OF RANGE
- CMO CONCRETE MONUMENT AND DISK
- EL ELEVATION
- L ARC LENGTH
- L.A.E. LIMITED ACCESS EASEMENT
- LB LICENSED BUSINESS
- M.R. METRIC
- OPT. OPTICAL RECORDS BOOK
- P.B. PLAT BOOK
- P.O.A. POINT OF CURVATURE
- PCD POINT OF COMPOUND CURVATURE
- PCP POINT OF CURVATURE
- PERM PERMANENT CONTROL POINT
- PRM PERMANENT REFERENCE MONUMENT
- PT POINT OF TANGENCY
- PRM PERMANENT REFERENCE MONUMENT
- R RADIUS
- R.D. RANGE
- R.C. RIGHT-OF-WAY
- SEC SECTION
- TOWNSHIP
- TRM TRIM ROD WITH CAP
- EL ELEVATION
- NA. 0.86' IN 3TH QUANTILE IN VERTICAL DATUM OF 1985
- S.A.E. SURFACE WATER MANAGEMENT TRACT
- U.E. UTILITY EASEMENT
- W.C. WATER AND SEWER EASEMENT



KEY MAP

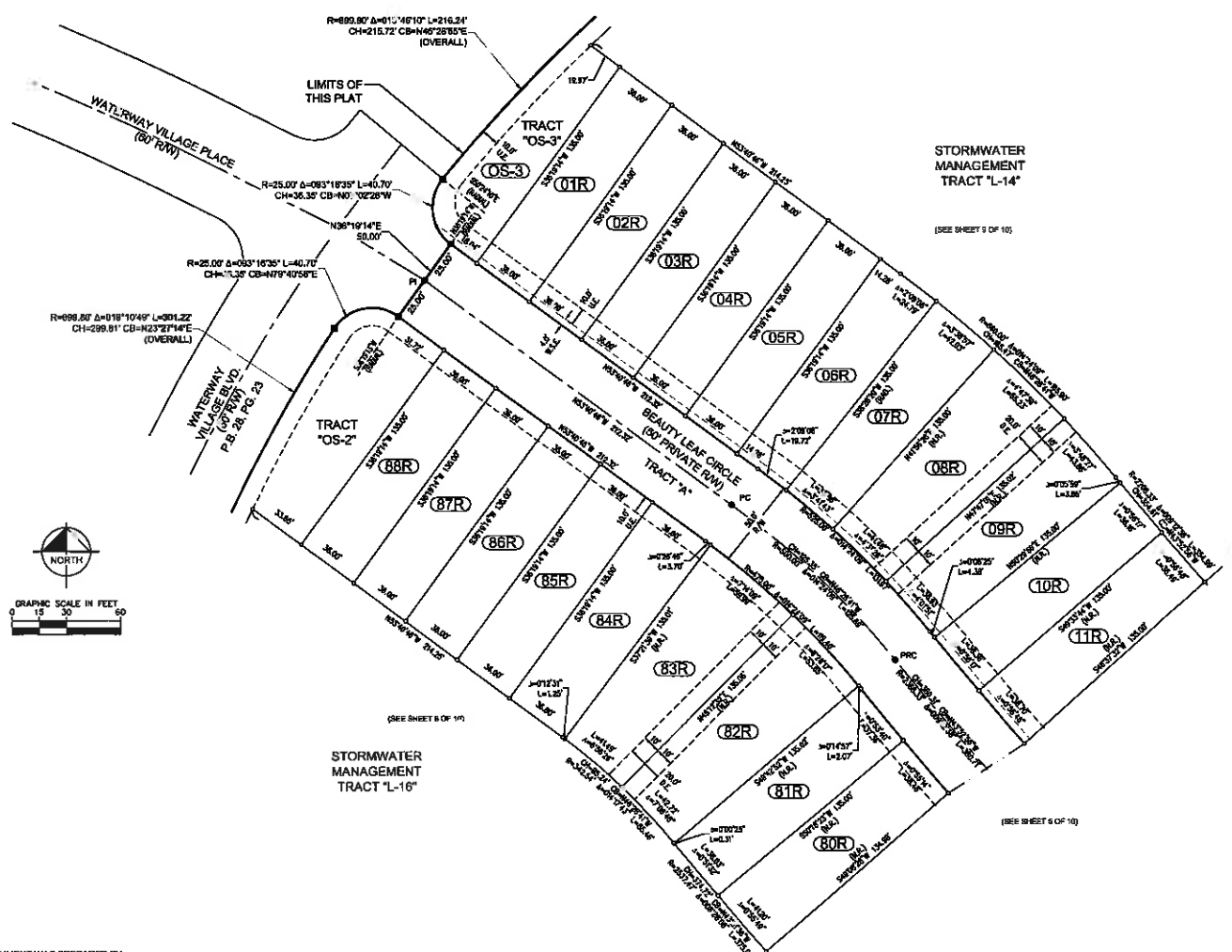
N.T.S.

THIS INSTRUMENT WAS PREPARED BY:
E.C. DEMETER P.S.M. 5174, STATE OF FLORIDA
KIMLEY-HORN AND ASSOCIATES, INC.
445 24TH STREET, SUITE 200
VERO BEACH, FLORIDA 32909
LB 999

LAKES AT WATERWAY VILLAGE PD - POD 3R

BEING A REPLAT OF A PORTION OF TRACT 1, SECTION 21, TOWNSHIP 32 SOUTH, RANGE 39 EAST, INDIAN RIVER FARMS CO. PLAT OF LANDS AND PLAN FOR LAND DRAINAGE AND ROAD RESERVATIONS, ACCORDING TO THE PLAT THEREOF, AS RECORDED IN PLAT BOOK 2, PAGE 25, PUBLIC RECORDS OF ST. LUCIE COUNTY, FLORIDA, NOW BEING IN INDIAN RIVER COUNTY, FLORIDA, AND A PORTION OF THE NORTHWEST ONE-QUARTER (NW. 1/4) OF SECTION 22, TOWNSHIP 32 SOUTH, RANGE 39 EAST AND A PORTION OF THE SOUTHEAST ONE-QUARTER (SE. 1/4) OF SECTION 16, TOWNSHIP 32 SOUTH, RANGE 39 EAST, INDIAN RIVER COUNTY, FLORIDA

PLAT BOOK _____
 PAGE _____
 DOCKET NUMBER _____

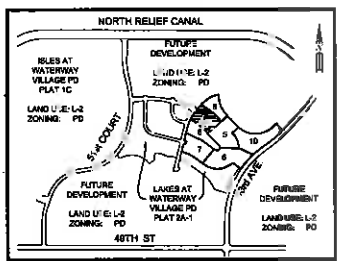


LEGEND OF SYMBOLS

- PLAT BOUNDARY
- PARCEL LINE
- 50' WIDE EASEMENT LINE
- UTILITY EASEMENT LINE
- ROAD CENTER LINE
- SECTION LINE
- MATCH LINE
- (01R) LOT NUMBER
- PPL AND DMC STAMPED "PPL KVA LB 19"
- OR AS NOTED
- PPL, NAL AND DMC STAMPED "PPL KVA LB 19B"
- LOT CORNER

ABBREVIATIONS

- Δ DELTA (CENTRAL ANGLE)
- CB CHORD BEARING
- CD CERTIFIED CORNER RECORD
- CD CHORD DISTANCE
- CMO CONCRETE MONUMENT AND DISK
- D.E. DRAINAGE EASEMENT
- L ARC LENGTH
- L.A.E. LIMITED ACCESS EASEMENT
- LE LICENSED EASEMENT
- N.R. NON-RADIAL
- ORL OFFICIAL RECORDS BOOK
- P.B. PLAT BOOK
- PC POINT OF CURVATURE
- PCP POINT OF COMPOUND CURVATURE
- PRC POINT OF REVERSE CURVATURE
- PPC PERMANENT CONTROL POINT
- PP PAGE
- PI POINT OF INTERSECTION
- PRM PERMANENT REFERENCE MONUMENT
- PT POINT OF TANGENCY
- PRM PERMANENT REFERENCE MONUMENT
- RA(R) RADIAL
- R/D ROAD
- ROB ROAD
- ROBT RIGHT-OF-WAY
- SEC SECTION
- TWP TOWNSHIP
- IRC IRON ROD WITH CAP
- ELV ELEVATION
- NAVD 88 NORTH AMERICAN VERTICAL DATUM OF 1988
- S.M.E. STORMWATER MANAGEMENT TRACT
- U.E. UTILITY EASEMENT
- W.S.E. WATER AND SEWER EASEMENT



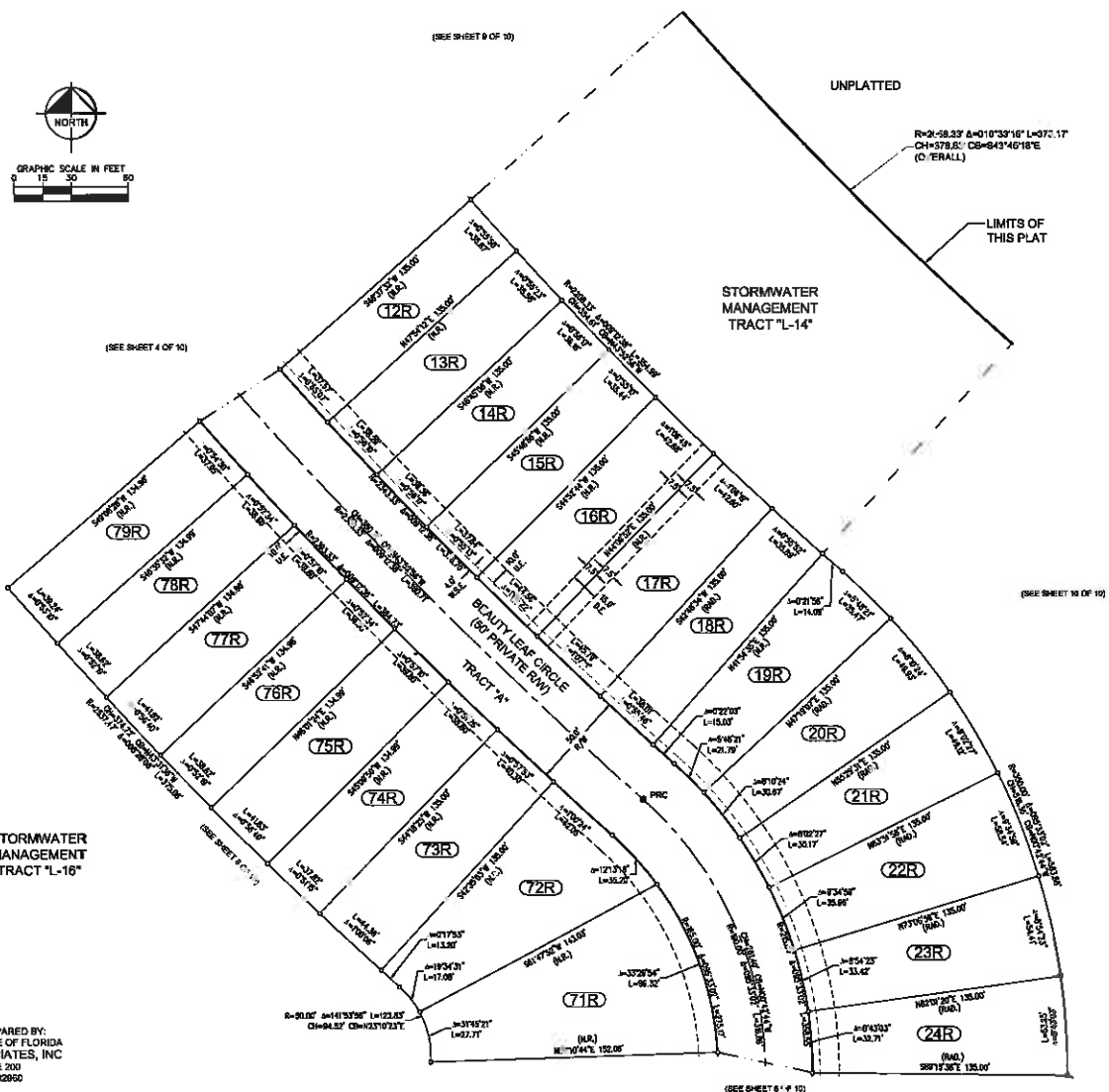
THIS INSTRUMENT WAS PREPARED BY:
 E.C. OSMEYER P.E. & M. SIVIN, STATE OF FLORIDA
 KIMLEY-HORN AND ASSOCIATES, INC.
 445 24TH STREET, SUITE 200
 VERO BEACH, FLORIDA 32900
 LD 095

KEY MAP
 N.T.S.

LAKES AT WATERWAY VILLAGE PD - POD 3R

BEING A REPLAT OF A PORTION OF TRACT 1, SECTION 21, TOWNSHIP 32 SOUTH, RANGE 39 EAST, INDIAN RIVER FARMS CO. PLAT OF LANDS AND PLAN FOR LAND DRAINAGE AND ROAD RESERVATIONS, ACCORDING TO THE PLAT THEREOF, AS RECORDED IN PLAT BOOK 2, PAGE 25, PUBLIC RECORDS OF ST. LUCIE COUNTY, FLORIDA, NOW BEING IN INDIAN RIVER COUNTY, FLORIDA, AND A PORTION OF THE NORTHWEST ONE-QUARTER (NW 1/4) OF SECTION 22, TOWNSHIP 32 SOUTH, RANGE 39 EAST AND A PORTION OF THE SOUTHEAST ONE-QUARTER (SE 1/4) OF SECTION 16, TOWNSHIP 32 SOUTH, RANGE 39 EAST, INDIAN RIVER COUNTY, FLORIDA

PLAT BOOK _____
 PAGE _____
 DOCKET NUMBER _____

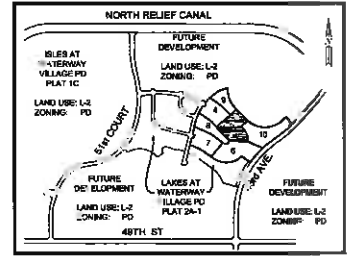


LEGEND OF SYMBOLS

[Symbol]	PLAT BOUNDARY
[Symbol]	PARCEL LINE
[Symbol]	DRAINAGE EASEMENT LINE
[Symbol]	UTILITY EASEMENT LINE
[Symbol]	ROAD CENTER LINE
[Symbol]	SECTION LINE
[Symbol]	MATCH LINE
[Symbol]	LOT NUMBER
[Symbol]	PRM, 4x4 GMD STAMPED "PRM KHA LB 89"
[Symbol]	OR AS NOTED
[Symbol]	PCR, NAIL AND DISC STAMPED "PCR KHA LB 89"
[Symbol]	LOT CORNER

ABBREVIATIONS

A	DATA (CENTRAL ANGLE)
CR	CHORD BEARING
CCR	CERTIFIED CORNER RECORD
CD	CHORD DISTANCE
CMO	CONCRETE MONUMENT AND MARK
D.E.	DRAINAGE EASEMENT
L	ARC LENGTH
L.A.E.	LIMITED ACCESS EASEMENT
L.S.	LICENSED SURVEYOR
N.R.	NON-RADIAL
OR	OFFICIAL RECORDS BOOK
P.B.	PLAT BOOK
P.C.	POINT OF CURVATURE
P.C.C.	POINT OF COMPOUND CURVATURE
P.R.C.	POINT OF REVERSE CURVATURE
P.C.P.	PERMANENT CONTROL POINT
P.P.	PLAT
P.I.	POINT OF INTERSECTION
P.R.M.	PERMANENT REFERENCE MONUMENT
P.T.	POINT OF TANGENCY
P.R.M.	PERMANENT REFERENCE MONUMENT
R	RADIUS
R.A.D.	RADIUS
R.S.E.	RIGHT-OF-WAY
SEC	SECTION
TWP	TOWNSHIP
IRC	IRON ROD WITH CAP
ELM	ELEPHANT
NAVD 83	NORTH AMERICAN VERTICAL DATUM OF 1983
S.A.E.	STORMWATER MANAGEMENT TRV / CT
U.S.	UTILITY EASEMENT
W.A.E.	WATER AND SEWER EASEMENT



THIS INSTRUMENT WAS PREPARED BY:
 E.C. DEMETER P.S.M. 5179, STATE OF FLORIDA
 KINLEY-HORN AND ASSOCIATES, INC
 445 24TH STREET, SUITE 200
 VERO BEACH, FLORIDA 32950
 LB 898

LAKES AT WATERWAY VILLAGE PD - POD 3R

BEING A REPLAT OF A PORTION OF TRACT 1, SECTION 21, TOWNSHIP 32 SOUTH, RANGE 39 EAST, INDIAN RIVER FARMS CO, PLAT OF LANDS AND PLAN FOR LAND DRAINAGE AND ROAD RESERVATIONS, ACCORDING TO THE PLAT THEREOF, AS RECORDED IN PLAT BOOK 2, PAGE 25, PUBLIC RECORDS OF ST. LUCIE COUNTY, FLORIDA, NOW BEING IN INDIAN RIVER COUNTY, FLORIDA, AND A PORTION OF THE NORTH-WEST ONE-QUARTER (NW. 1/4) OF SECTION 22, TOWNSHIP 32 SOUTH, RANGE 39 EAST AND A PORTION OF THE SOUTHEAST ONE-QUARTER (SE. 1/4) OF SECTION 18, TOWNSHIP 32 SOUTH, RANGE 39 EAST, INDIAN RIVER COUNTY, FLORIDA

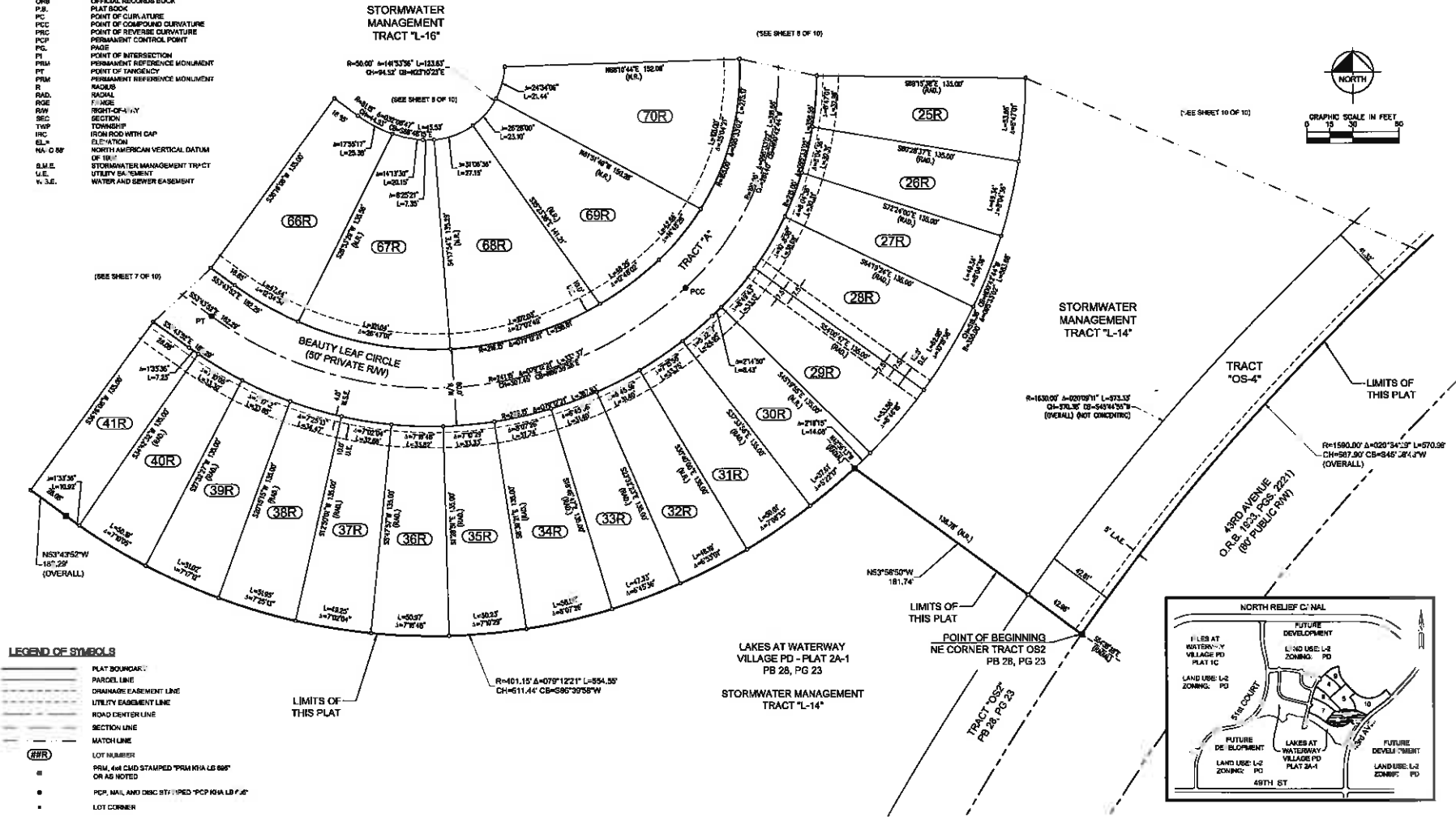
PLAT BOOK _____

PAGE _____

DOCKET NUMBER _____

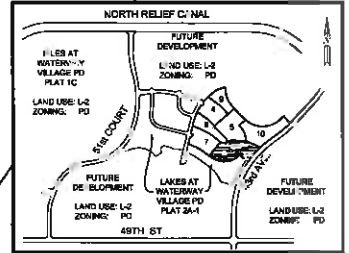
ABBREVIATIONS

- A DELTA (CENTRAL ANGLE)
- CB 3/30 BEARING
- CD CERTIFIED CORNER RECORD
- CR CROSS SECTION
- CDM CONCRETE MONUMENT AND MARK
- D.E. DRAINAGE EASEMENT
- L ARC LENGTH
- L.A.E. LIMITED ACCESS EASEMENT
- LB LESSEES BUSINESS
- N.R. NON-RADIAL
- ORB OFFICIAL RECORDS BOOK
- P.B. PLAT BOOK
- PC POINT OF CURVATURE
- PCC POINT OF COMPOUND CURVATURE
- PRC POINT OF REVERSE CURVATURE
- PCP PERMANENT CONTROL POINT
- PG. PAGE
- PI POINT OF INTERSECTION
- PRM PERMANENT REFERENCE MONUMENT
- PT POINT OF TANGENCY
- PRM PERMANENT REFERENCE MONUMENT
- R RADIUS
- RAD. RADIAL
- R.H. RIGHT-OF-WAY
- R.W. RIGHT-OF-WAY
- SEC. SECTION
- TWP. TOWNSHIP
- TRC FROM ROD WITH CAP
- U.S.M. U.S. MILE
- N.A. 83 NORTH AMERICAN VERTICAL DATUM OF 1983
- S.M.E. STORMWATER MANAGEMENT TRACT
- U.E. UTILITY EASEMENT
- W.E. WATER AND SEWER EASEMENT



- ### LEGEND OF SYMBOLS
- PLAT BOUNDARY
 - PARCEL LINE
 - DRAINAGE EASEMENT LINE
 - UTILITY EASEMENT LINE
 - ROAD CENTER LINE
 - SECTION LINE
 - MATCH LINE
 - LOT NUMBER
 - FROM AND C.M.D. STAMPED FROM N.A. LB 846 OR AS NOTED
 - P.C.P. MAIL AND DRG. STY. I.P.E.D. *P.C.P. N.W. LB 7.2
 - LOT CORNER

THIS INSTRUMENT WAS PREPARED BY:
 E.C. DEMETER, P.A., 5178, STATE OF FLORIDA
 KIMLEY-HORN AND ASSOCIATES, INC.
 445 24TH STREET, SUITE 200
 VERO BEACH, FLORIDA 32980
 LB 686



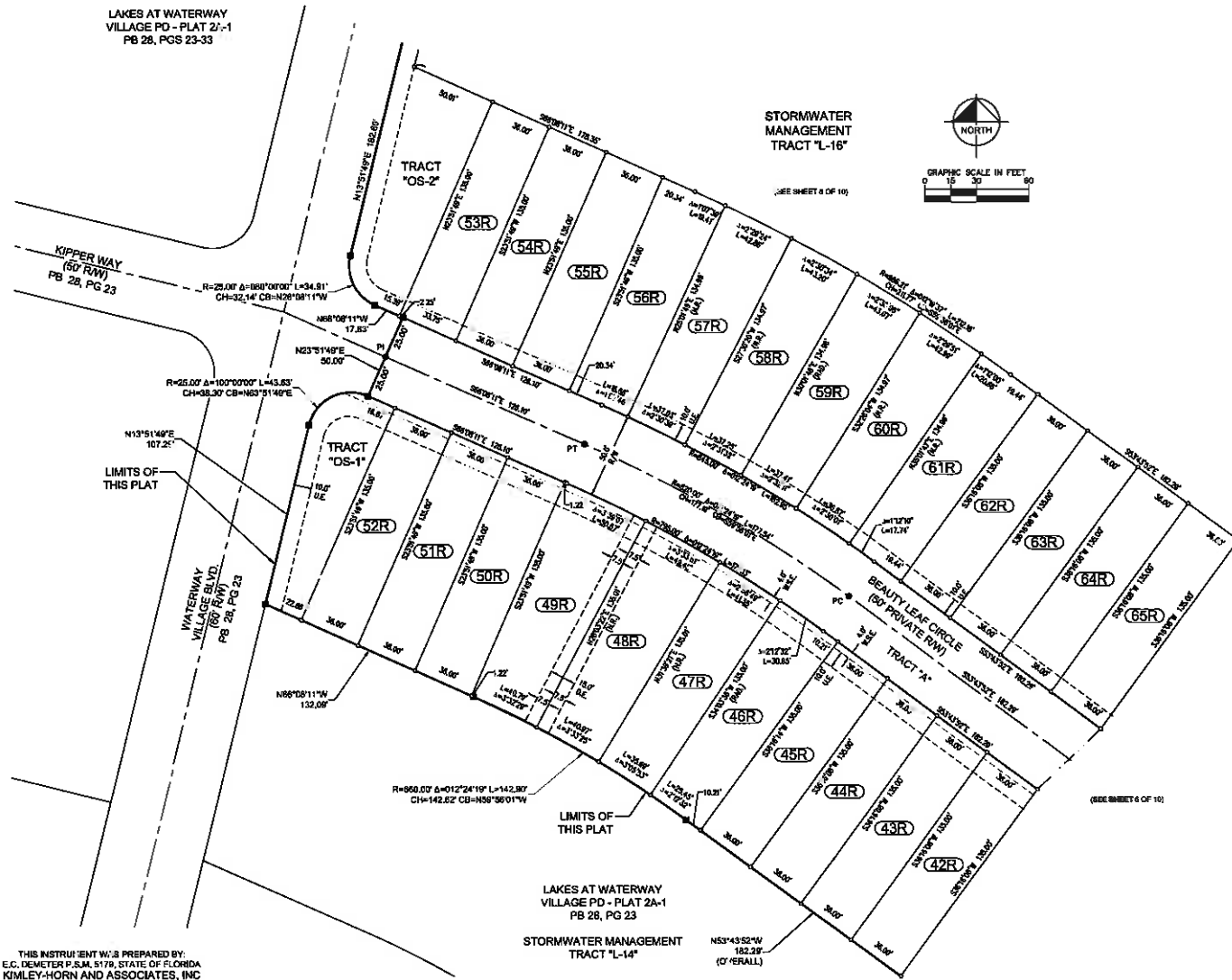
KEY MAP
N.T.C.

LAKES AT WATERWAY VILLAGE PD - POD 3R

BEING A REPLAT OF A PORTION OF TRACT 1, SECTION 21, TOWNSHIP 32 SOUTH, RANGE 39 EAST, INDIAN RIVER COUNTY, FLORIDA, NOW BEING IN INDIAN RIVER COUNTY, FLORIDA, AND A PORTION OF THE NORTH-WEST ONE-QUARTER (NW. 1/4) OF SECTION 22, TOWNSHIP 32 SOUTH, RANGE 39 EAST AND A PORTION OF THE SOUTHEAST ONE-QUARTER (SE. 1/4) OF SECTION 16, TOWNSHIP 32 SOUTH, RANGE 39 EAST, INDIAN RIVER COUNTY, FLORIDA

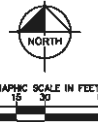
PLAT BOOK _____
 PAGE _____
 DOCKET NUMBER _____

LAKES AT WATERWAY
 VILLAGE PD - PLAT 2A-1
 PB 28, PGS 23-33



STORMWATER
 MANAGEMENT
 TRACT "L-16"

(SEE SHEET 6 OF 10)

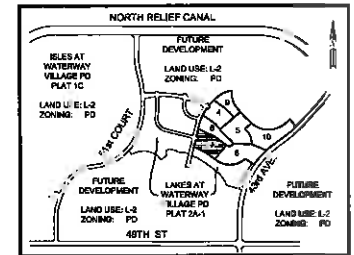


LEGEND OF SYMBOLS

- PLAT BOUNDARY
- PARCEL LINE
- - - - DRAINAGE EASEMENT LINE
- - - - UTILITY EASEMENT LINE
- - - - ROAD CENTER LINE
- - - - SECTION LINE
- - - - MATCH LINE
- ① LOT NUMBER
- P.M. AND C.M.D. STAMPED "P.M. AND C.M.D." L.R. AS NOTED
- F.C.P. MAIL AND DISC STAMPED "F.C.P. MAIL AND DISC" L.R. AS NOTED
- LOT CORNER

ABBREVIATIONS

- A DATA (CENTRAL ANGLE)
- CB CHORD BEARING
- CD CHORD DISTANCE
- CMD CONCRETE MONUMENT AND MARK
- D.E. DRAINAGE EASEMENT
- D.L. DISTANCE
- L.A.E. LIMITED ACCESS EASEMENT
- L.B. LICENSED BUSINESS
- N.R. NON-RADIAL
- O.M.B. OFFICIAL RECORDS BOOK
- P.B. PLAT BOOK
- P.C. POINT OF CURVATURE
- P.C.C. POINT OF COMPOUND CURVATURE
- P.R.C. POINT OF REVERSE CURVATURE
- P.M. PERMANENT MONUMENT
- P.C. POINT OF TANGENCY
- P.I. POINT OF INTERSECTION
- P.M.M. PERMANENT REFERENCE MONUMENT
- P.T. POINT OF TANGENCY
- R.M. RIGHT-OF-WAY MONUMENT
- R. RADIAL
- RAD. RADIAL
- RANGE
- R.W. RIGHT-OF-WAY
- SEC. SECTION
- TWP. TOWNSHIP
- E.C. ROAD ROD WITH CAP
- EL. ELEVATION
- NAD 83 NORTH AMERICAN VERTICAL DATUM OF 1983
- S.M.E. STORMWATER MANAGEMENT TRACT
- U.E. UTILITY EASEMENT
- W.S.E. WATER AND SEWER EASEMENT



KEY MAP
 N.T.S.

THIS INSTRUMENT WAS PREPARED BY:
 E.C. DEMETER P.S.M., STATE OF FLORIDA
 KIMLEY-HORN AND ASSOCIATES, INC.
 445 24TH STREET, SUITE 200
 VERO BEACH, FLORIDA 32980
 LB 659

STORMWATER MANAGEMENT
 TRACT "L-14"

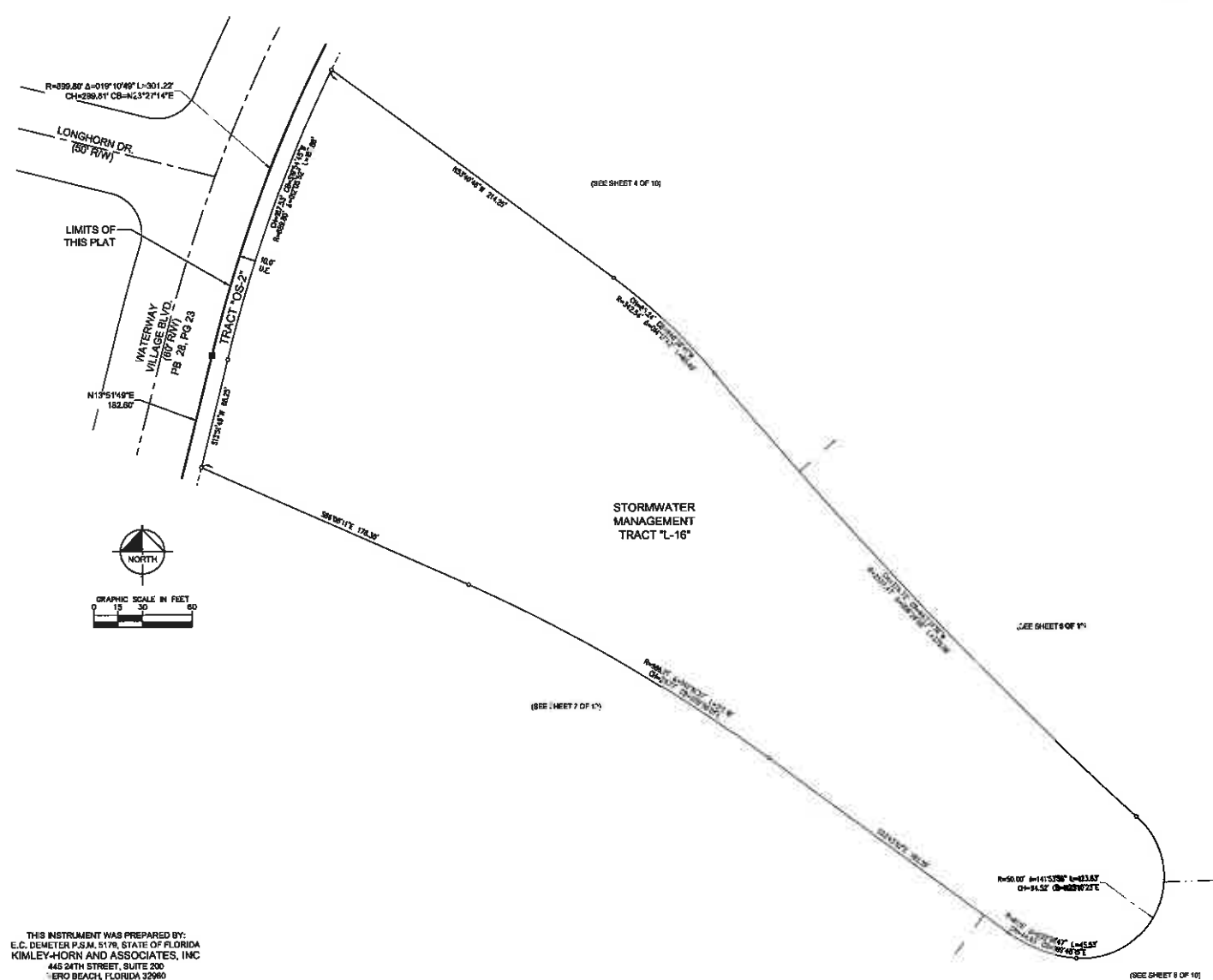
N53°43'52"W
 182.29'
 (7" EQUAL)

(SEE SHEET 6 OF 10)

LAKES AT WATERWAY VILLAGE PD - POD 3R

BEING A REPLAT OF A PORTION OF TRACT 1, SECTION 21, TOWNSHIP 32 SOUTH, RANGE 39 EAST, INDIAN RIVER FARMS CO. PLAT OF LANDS AND PLAN FOR LAND DRAINAGE AND ROAD RESERVATIONS, ACCORDING TO THE PLAT THEREOF, AS RECORDED IN PLAT BOOK 2, PAGE 25, PUBLIC RECORDS OF ST. LUCIE COUNTY, FLORIDA, NOW BEING IN INDIAN RIVER COUNTY, FLORIDA, AND A PORTION OF THE NORTH-WEST ONE-QUARTER (NW. 1/4) OF SECTION 22, TOWNSHIP 32 SOUTH, RANGE 39 EAST AND A PORTION OF THE SOUTHEAST ONE-QUARTER (SE. 1/4) OF SECTION 16, TOWNSHIP 32 SOUTH, RANGE 39 EAST, INDIAN RIVER COUNTY, FLORIDA

PLAT BOOK _____
 PAGE _____
 DOCKET NUMBER _____

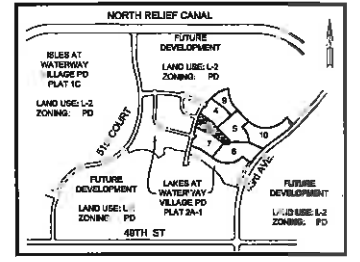


LEGEND OF SYMBOLS

- PLAT BOUNDARY
- PARCEL LINE
- - - DRAINAGE EASEMENT LINE
- - - UTILITY EASEMENT LINE
- - - ROAD CENTER LINE
- - - SECTION LINE
- - - MATCH LINE
- (R/R) LOT NUMBER
- PRR, 4x4 CND STAMPED "PRM 10x4 LB 888" 1/4 AS NOTED
- PCP, NAIL AND DISC STAMPED "PCP 88x8 LB 888"
- LOT CORNER

ABBREVIATIONS

- Δ DELTA (CENTRAL ANGLE)
- CB CHORD BEARING
- CDR CERTIFIED CORNER RECORD
- CO CHORD DISTANCE
- CND CONCRETE MONUMENT AND DISK
- O.E. DRAINAGE EASEMENT
- L. ARC LENGTH
- L.A.E. LIMITED ACCESS EASEMENT
- LS LICENSED SURVEYOR
- N.R. NON-RADIAL
- L.R.B. OFFICIAL RECORDS BOOK
- P.B. PLAT BOOK
- P.C. POINT OF CURVATURE
- P.O.C. POINT OF COMMENCING CURVATURE
- P.R.C. POINT OF REVERSE CURVATURE
- PCP PERMANENT CONTROL POINT
- P.C. PAGE
- P.I. POINT OF INTERSECTION
- PRM PERMANENT REFERENCE MONUMENT
- P.S. PART OF TOWNSHIP
- PT PERMANENT REFERENCE MONUMENT
- R. RADIUS
- RD. RADIAL
- RANGE RANGE
- R.W. RIGHT-OF-WAY
- SE. SECTION
- TWP. TOWNSHIP
- INC. INCH
- NAVG. NAVY
- ELM. ELEVATION
- N.A.V.D. NORTH AMERICAN VERTICAL DATUM OF 1988
- S.W.E. STORMWATER MANAGEMENT TRACT
- U.E. UTILITY EASEMENT
- W.S.E. WATER AND SEWER EASEMENT



KEY MAP
N.T.C.

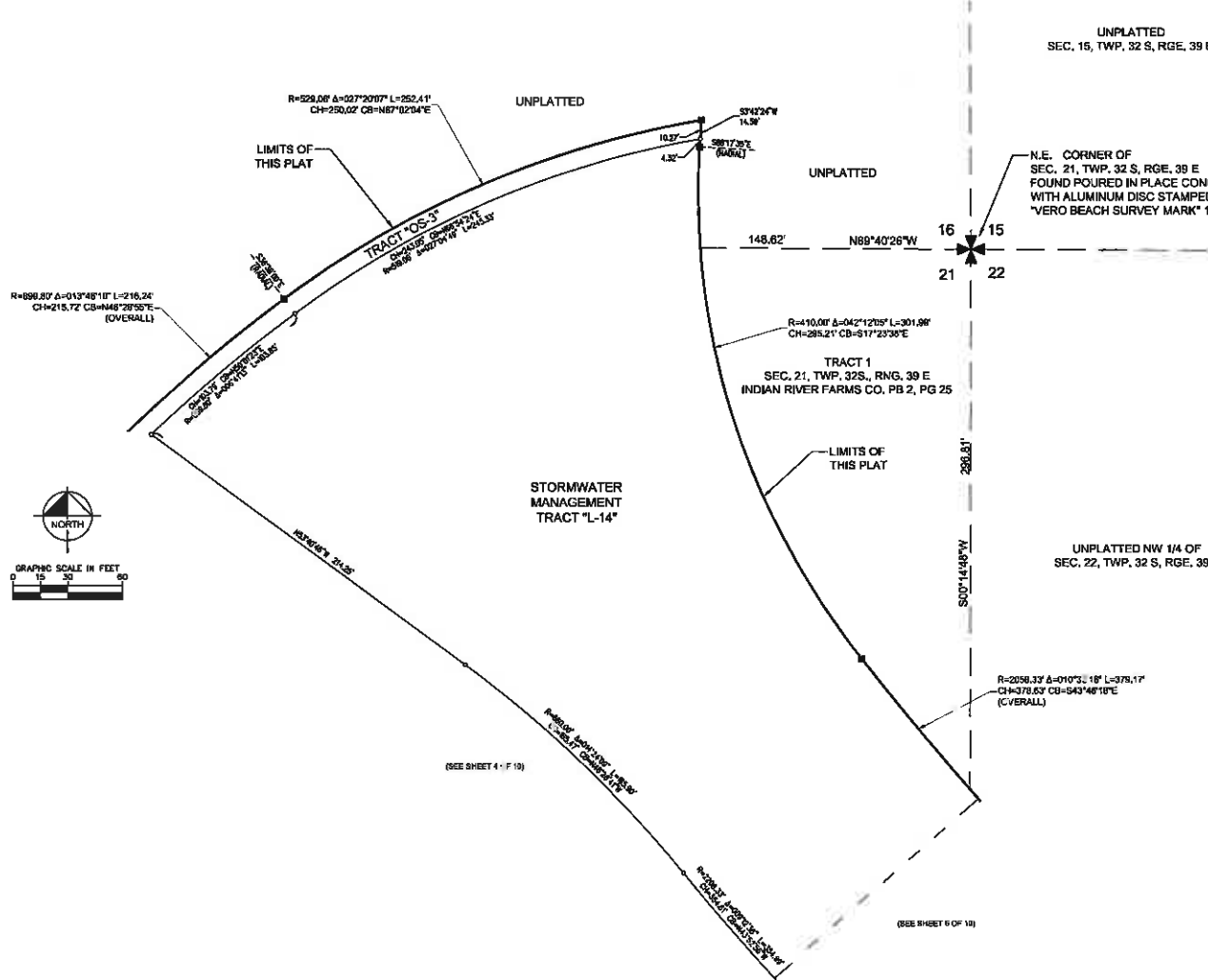
THIS INSTRUMENT WAS PREPARED BY:
 E.C. DEMETER P.S.M. 5176, STATE OF FLORIDA
 KIMLEY-HORN AND ASSOCIATES, INC.
 445 24TH STREET, SUITE 200
 VERO BEACH, FLORIDA 32960
 LB 898

(SEE SHEET 6 OF 10)

LAKES AT WATERWAY VILLAGE PD - POD 3R

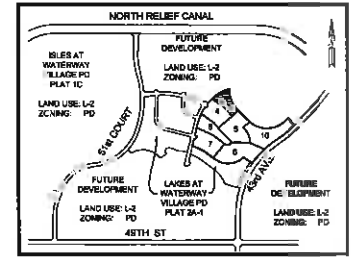
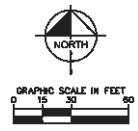
BEING A REPLAT OF A PORTION OF TRACT 1, SECTION 21, TOWNSHIP 32 SOUTH, RANGE 39 EAST, INDIAN RIVER FARMS CO. PLAT OF LANDS AND PLAN FOR LAND DRAINAGE AND ROAD RESERVATIONS, ACCORDING TO THE PLAT THEREOF, AS RECORDED IN PLAT BOOK 2, PAGE 25, PUBLIC RECORDS OF ST. LUCIE COUNTY, FLORIDA, NOW BEING IN INDIAN RIVER COUNTY, FLORIDA, AND A PORTION OF THE NORTH-WEST ONE-QUARTER (NW. 1/4) OF SECTION 22, TOWNSHIP 32 SOUTH, RANGE 39 EAST AND A PORTION OF THE SOUTHEAST ONE-QUARTER (SE. 1/4) OF SECTION 16, TOWNSHIP 32 SOUTH, RANGE 39 EAST, INDIAN RIVER COUNTY, FLORIDA

PLAT BOOK _____
 PAGE _____
 DOCKET NUMBER _____



- LEGEND OF SYMBOLS**
- PLAT BOUNDARY
 - PARCEL LINE
 - DRAINAGE EASEMENT LINE
 - UTILITY EASEMENT LINE
 - ROAD CENTER LINE
 - SECTION LINE
 - MATCH LINE
 - LOT NUMBER
 - PRM 4x4 CHD STAMPED 'PRM 4x4 LB 892' OR AS NOTED
 - POP, NAIL AND DISC STAMPED 'POP KHA LB 892'
 - LOT CORNER

- ABBREVIATIONS**
- A ANGULAR DISTANCE
 - OS CENTER
 - OCR CENTER
 - CD CENTER
 - CHD CONCRETE MONUMENT AND DISC
 - D.E. DRAINAGE EASEMENT
 - APL. 5' 11\"/>



KEY MAP
N.T.S.

THIS INSTRUMENT WAS PREPARED BY:
 E.C. DEMETER P.S.M. 5178, STATE OF FLORIDA
 KIMLEY-HORN AND ASSOCIATES, INC.
 445 24TH STREET, SUITE 200
 VERO BEACH, FLORIDA 32960
 1.5.1999

LAKES AT WATERWAY VILLAGE PD - POD 3R

BEING A REPLAT OF A PORTION OF TRACT 1, SECTION 21, TOWNSHIP 32 SOUTH, RANGE 39 EAST, INDIAN RIVER FARMS CO. PLAT OF LANDS AND PLAN FOR LAND DRAINAGE AND ROAD RESERVATIONS, ACCORDING TO THE PLAT THEREOF, AS RECORDED IN PLAT BOOK 2, PAGE 25, PUBLIC RECORDS OF ST. LUCIE COUNTY, FLORIDA, NOW BEING IN INDIAN RIVER COUNTY, FLORIDA, AND A PORTION OF THE NORTHWEST ONE-QUARTER (NW. 1/4) OF SECTION 22, TOWNSHIP 32 SOUTH, RANGE 39 EAST AND A PORTION OF THE SOUTHEAST ONE-QUARTER (SE. 1/4) OF SECTION 16, TOWNSHIP 32 SOUTH, RANGE 39 EAST, INDIAN RIVER COUNTY, FLORIDA

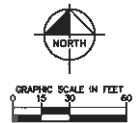
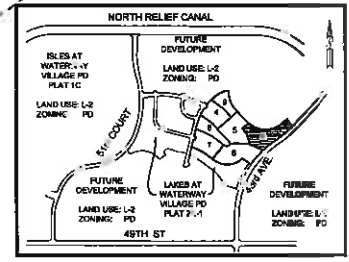
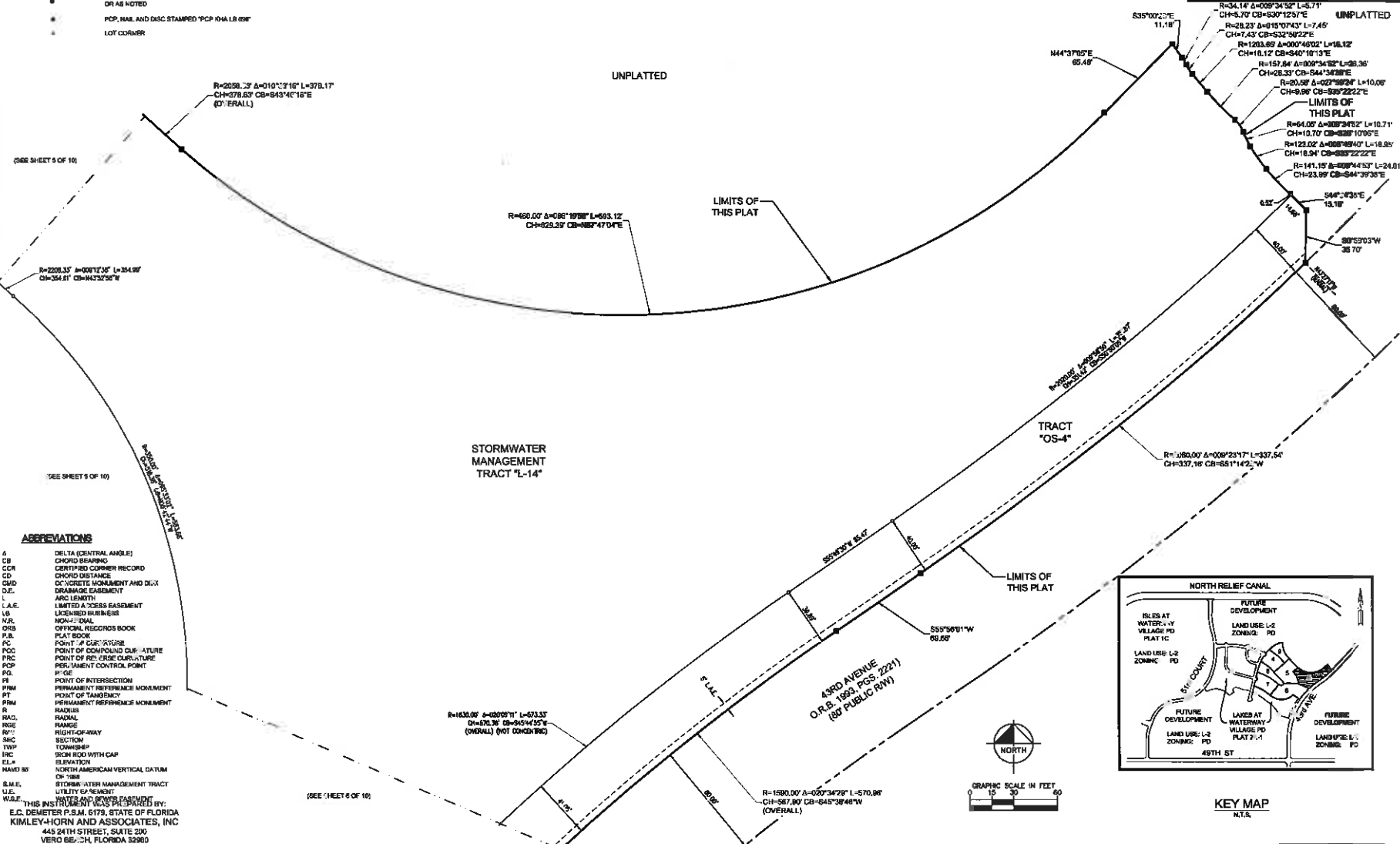
PLAT BOOK _____
 PAGE _____
 DOCKET NUMBER _____

LEGEND OF SYMBOLS

- PLAT BOUNDARY
- PARCEL LINE
- DRAINAGE EASEMENT LINE
- UTILITY EASEMENT LINE
- ROAD CENTER LINE
- SECTION LINE
- TOWNSHIP LINE
- ① LOT NUMBER
- PRM: R/A CMD STAMPED "PRM R/A LB 696" OR AS NOTED
- POP: MAIL AND DISC STAMPED "POP R/A LB 696"
- LOT CORNER

ABBREVIATIONS

- | | |
|---------|--|
| A | DELTA (CENTRAL ANGLE) |
| CB | CHORD BEARING |
| CCM | CERTIFIED CORNER RECORD |
| CD | CHORD DISTANCE |
| CMD | CONCRETE MONUMENT AND DISC |
| D.E. | DRAINAGE EASEMENT |
| L | ARC LENGTH |
| L.A.E. | LIMITED ACCESS EASEMENT |
| LB | LEGISLATED BUSINESS |
| N.R. | NON-QUAL |
| OHS | OFFICIAL RECORDS BOOK |
| P.B. | PLAT BOOK |
| PC | POINT OF CURVATURE |
| POC | POINT OF COMPOUND CURVATURE |
| POC | POINT OF CURVATURE |
| PCP | PERMANENT CONTROL POINT |
| PCP | POINT OF INTERSECTION |
| PI | POINT OF INTERSECTION |
| PRM | PERMANENT REFERENCE MONUMENT |
| PT | POINT OF TANGENCY |
| PRM | PERMANENT REFERENCE MONUMENT |
| R | RADIUS |
| RAD. | RADIAL |
| ROE | RANGE |
| RYW | RIGHT-OF-WAY |
| SEC | SECTION |
| TOWP | TOWNSHIP |
| IRC | IRON ROD WITH CAP |
| ELL. | ELEVATION |
| NAVD 83 | NORTH AMERICAN VERTICAL DATUM OF 1983 |
| S.M.E. | STORMWATER MANAGEMENT TRACT UTILITY EASEMENT |
| W.E. | UTILITY EASEMENT |
- THIS INSTRUMENT WAS PREPARED BY:
 E.C. DEMETER P.S.M. 5179, STATE OF FLORIDA
 KIMLEY-HORN AND ASSOCIATES, INC.
 445 24TH STREET, SUITE 200
 VERO BEACH, FLORIDA 32960
 LB 996



KEY MAP
N.T.S.