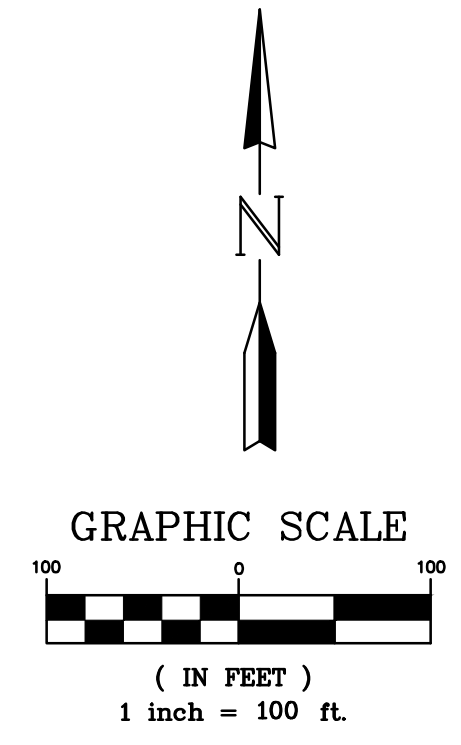
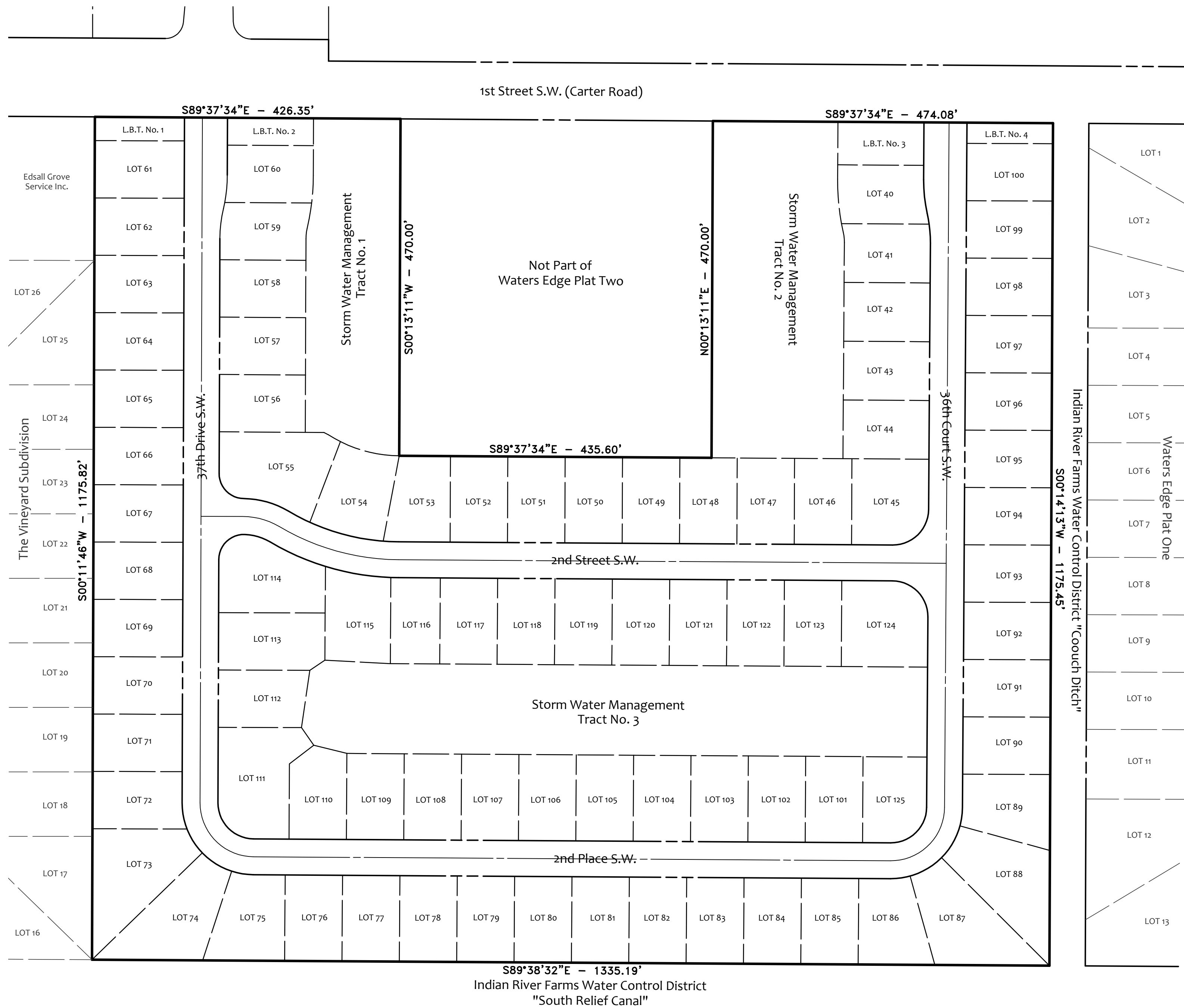




# WATERS EDGE PLAT TWO ASSESSMENT PLAT - INDIAN RIVER COUNTY



NO.	REVISION	DATE	BY	INDIAN RIVER COUNTY 1801 27TH STREET VERO BEACH, FL 32960 (772) 567-8000	DEPARTMENT OF PUBLIC WORKS ENGINEERING DIVISION	CHECKED BY: D. SCHRYVER DRAWN BY: R. INGLETT APPROVED BY: D. SCHRYVER	SECTION: 22 TOWNSHIP: 33 RANGE: 39	FIELD BOOK: N/A N/A	DATE: 09/12/2024 PROJECT NUMBER: 3051	WATERS EDGE PLAT TWO ASSESSMENT PLAT - INDIAN RIVER COUNTY	SHEET 1 OF 1
-----	----------	------	----	---	--	---	--	---------------------------	--	---	-----------------------