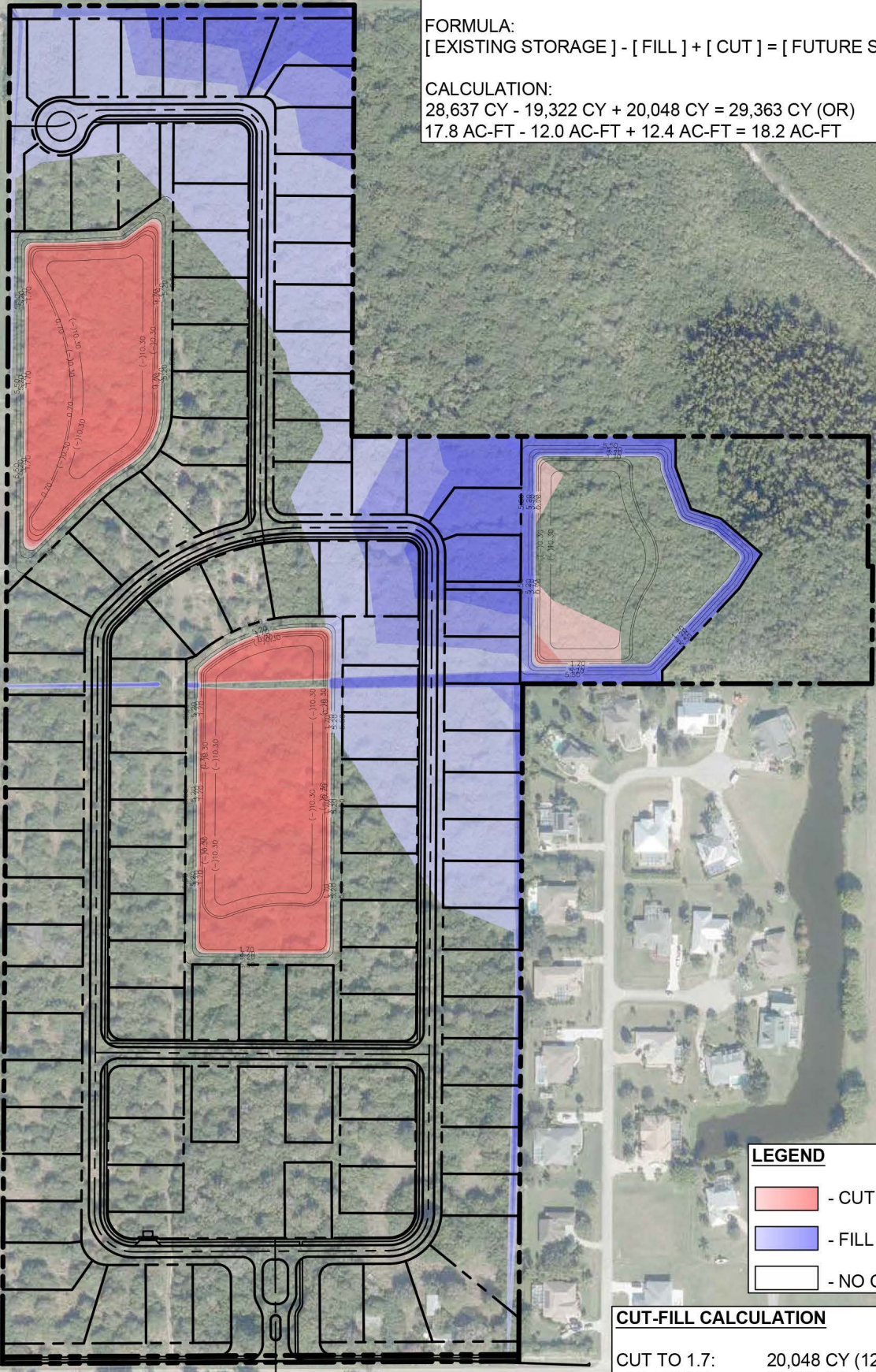


**10-YEAR FUTURE STORAGE VOLUME**

FORMULA:  
[ EXISTING STORAGE ] - [ FILL ] + [ CUT ] = [ FUTURE STORAGE ]

CALCULATION:  
28,637 CY - 19,322 CY + 20,048 CY = 29,363 CY (OR)  
17.8 AC-FT - 12.0 AC-FT + 12.4 AC-FT = 18.2 AC-FT



**LEGEND**

- CUT (0.0' - 2.0')
- FILL (0.0' - 2.0')
- NO CUT/FILL

**CUT-FILL CALCULATION**

CUT TO 1.7:	20,048 CY (12.4 AC-FT)
FILL TO 3.7:	19,322 CY (12.0 AC-FT)
NET (CUT):	726 CY (0.4 AC-FT)

**GHO HAMMOCK SHORES**  
SUBDIVISION  
VERO BEACH, FLORIDA  
INDIAN RIVER COUNTY

**CUT-FILL CALC @ 10-YEAR**  
FLOOD EL. 3.7'NAVD  
100 YEAR WAIVER - 103 LOTS

**SCHULKE, BITTLE & STODDARD, L.L.C.**  
CIVIL & STRUCTURAL ENGINEERING • LAND PLANNING • ENVIRONMENTAL PERMITTING  
REGISTRY #8668  
1717 INDIAN RIVER BLVD., SUITE 201 VERO BEACH, FLORIDA 32960  
TEL 772 / 770-9622 FAX 772 / 770-9496 EMAIL info@sbsengineers.com

**EXHIBIT F**  
SCALE: 1" = 300'

DRAWING: J:\2021\21-077 GHO HAMMOCK SHORES C3D\PRODUCTION DRAWINGS\EXHIBITS\21-077 CUT-FILL 010YR V2.0.DWG; PLOT DATE: 11/13/2023 9:51:52 AM