

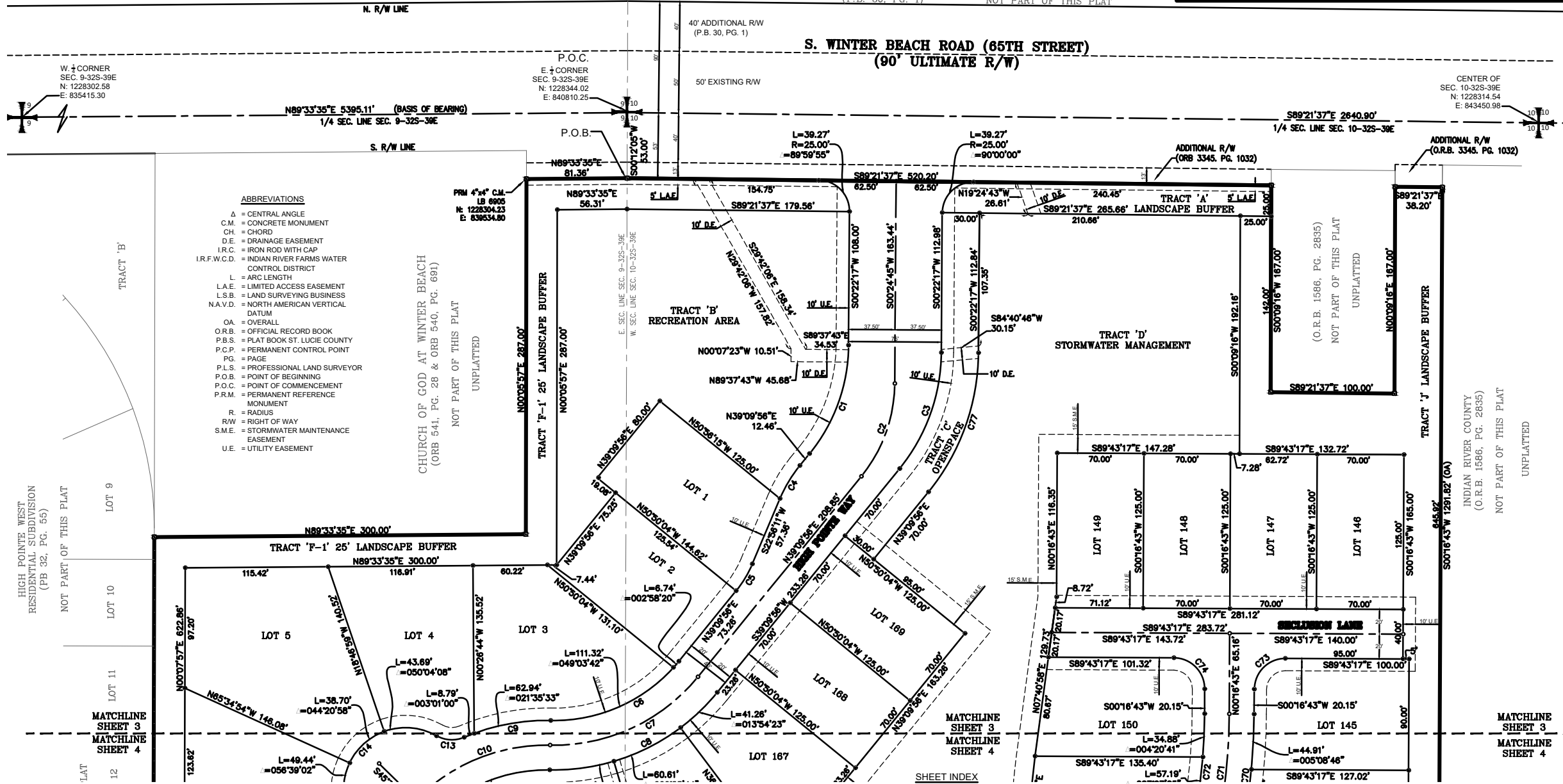
HIGH POINTE SUBDIVISION - PHASE 1 P.D.

BEING A PORTION OF TRACTS 1 & 32 SECTION 9, TOWNSHIP 32 SOUTH, RANGE 39 EAST, ACCORDING TO THE LAST GENERAL PLAT OF LANDS OF THE INDIAN RIVER FARMS COMPANY SUBDIVISION AS RECORDED IN PLAT BOOK 2, PAGE 25, PUBLIC RECORDS OF ST. LUCIE COUNTY, FLORIDA, SAID LAND NOW LYING AND BEING IN INDIAN RIVER COUNTY, FLORIDA, AND ALSO A PORTION OF SECTION 10, TOWNSHIP 32 SOUTH, RANGE 39 EAST

COVENANTS, RESTRICTIONS OR RESERVATIONS AFFECTING THE OWNERSHIP OR USE OF THE PROPERTY SHOWN IN THIS PLAT ARE FILED IN OFFICIAL RECORD BOOK 3565, PAGE 2063, PUBLIC RECORDS OF INDIAN RIVER COUNTY, FLORIDA.

PLAT BOOK _____
 PAGE _____
 CFN _____
 CLERK'S FILE NO. _____

LOST TREE PRESERVE, OWNERS ASSOCIATION INC, PHASE 1 (P.B. 30, PG. 1) NOT PART OF THIS PLAT



- ABBREVIATIONS**
- Δ = CENTRAL ANGLE
 - C.M. = CONCRETE MONUMENT
 - CH. = CHORD
 - D.E. = DRAINAGE EASEMENT
 - I.R.C. = IRON ROD WITH CAP
 - I.R.F.W.C.D. = INDIAN RIVER FARMS WATER CONTROL DISTRICT
 - L = ARC LENGTH
 - L.A.E. = LIMITED ACCESS EASEMENT
 - L.S.B. = LAND SURVEYING BUSINESS
 - N.A.V.D. = NORTH AMERICAN VERTICAL DATUM
 - OA = OVERALL
 - O.R.B. = OFFICIAL RECORD BOOK
 - P.B.S. = PLAT BOOK ST. LUCIE COUNTY
 - P.C.P. = PERMANENT CONTROL POINT
 - PG. = PAGE
 - P.L.S. = PROFESSIONAL LAND SURVEYOR
 - P.O.B. = POINT OF BEGINNING
 - P.O.C. = POINT OF COMMENCEMENT
 - P.R.M. = PERMANENT REFERENCE MONUMENT
 - R = RADIUS
 - R/W = RIGHT OF WAY
 - S.M.E. = STORMWATER MAINTENANCE EASEMENT
 - U.E. = UTILITY EASEMENT

HIGH POINTE WEST RESIDENTIAL SUBDIVISION (PB 32, PG. 55) NOT PART OF THIS PLAT

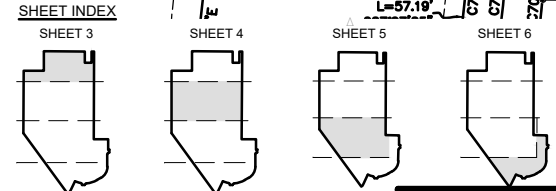
INDIAN RIVER COUNTY (O.R.B. 1566, PG. 2835) NOT PART OF THIS PLAT

Curve Table					
CURVE	LENGTH	RADIUS	Δ	CH. BEARING	CH. LENGTH
C1	94.79'	140.00'	38°47'39"	N19°46'06"E	92.99'
C2	81.25'	120.00'	38°47'39"	N19°46'06"E	79.71'
C3	101.56'	150.00'	38°47'39"	N19°46'06"E	99.63'
C4	31.16'	110.00'	16°13'45"	S31°03'03"W	31.05'
C5	25.49'	90.00'	16°13'45"	N31°03'03"E	25.41'
C6	118.06'	130.00'	52°02'02"	N65°10'57"E	114.05'
C7	136.22'	150.00'	52°02'02"	N65°10'57"E	131.59'

Curve Table					
CURVE	LENGTH	RADIUS	Δ	CH. BEARING	CH. LENGTH
C8	154.39'	170.00'	52°02'02"	N65°10'57"E	149.14'
C9	71.73'	167.00'	24°36'33"	S78°53'41"W	71.18'
C10	120.16'	147.00'	46°50'03"	S67°46'57"W	116.84'
C13	23.26'	25.00'	53°18'34"	S86°45'18"E	22.43'
C14	131.83'	50.00'	151°04'07"	S44°21'56"W	96.83'
C70	100.08'	500.00'	11°28'06"	N6°00'46"E	99.91'
C71	96.11'	479.90'	11°28'28"	N6°00'19"E	95.95'

Curve Table					
CURVE	LENGTH	RADIUS	Δ	CH. BEARING	CH. LENGTH
C72	92.07'	460.00'	11°28'06"	N6°00'46"E	91.92'
C73	39.27'	25.00'	90°00'00"	S45°16'43"W	35.36'
C74	39.27'	25.00'	90°00'00"	N44°43'17"W	35.36'
C77	121.88'	180.00'	38°47'39"	N19°46'06"E	119.56'

- SYMBOL LEGEND**
- SET 4"x4" CONCRETE PERMANENT REFERENCE MONUMENT (PRM) LB#6905. FOUND MONUMENTS WILL BE NOTED AS FOUND
 - LOT CORNER MARKER 5/8" IRC, LB#6905
 - PERMANENT CONTROL POINT (PCP) LB#6905



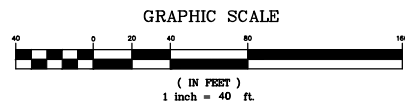
HOUSTON, SCHULKE, BITTLE, & STODDARD, INC. D/B/A
MERIDIAN LAND SURVEYORS
 1717 INDIAN RIVER BLVD, SUITE 201
 VERO BEACH, FL. 32960 LB#6905
 PHONE: 772-794-1213, FAX: 772-794-1096
 EMAIL: INFO@MLS-LB6905.COM

SHEET 3 of 6

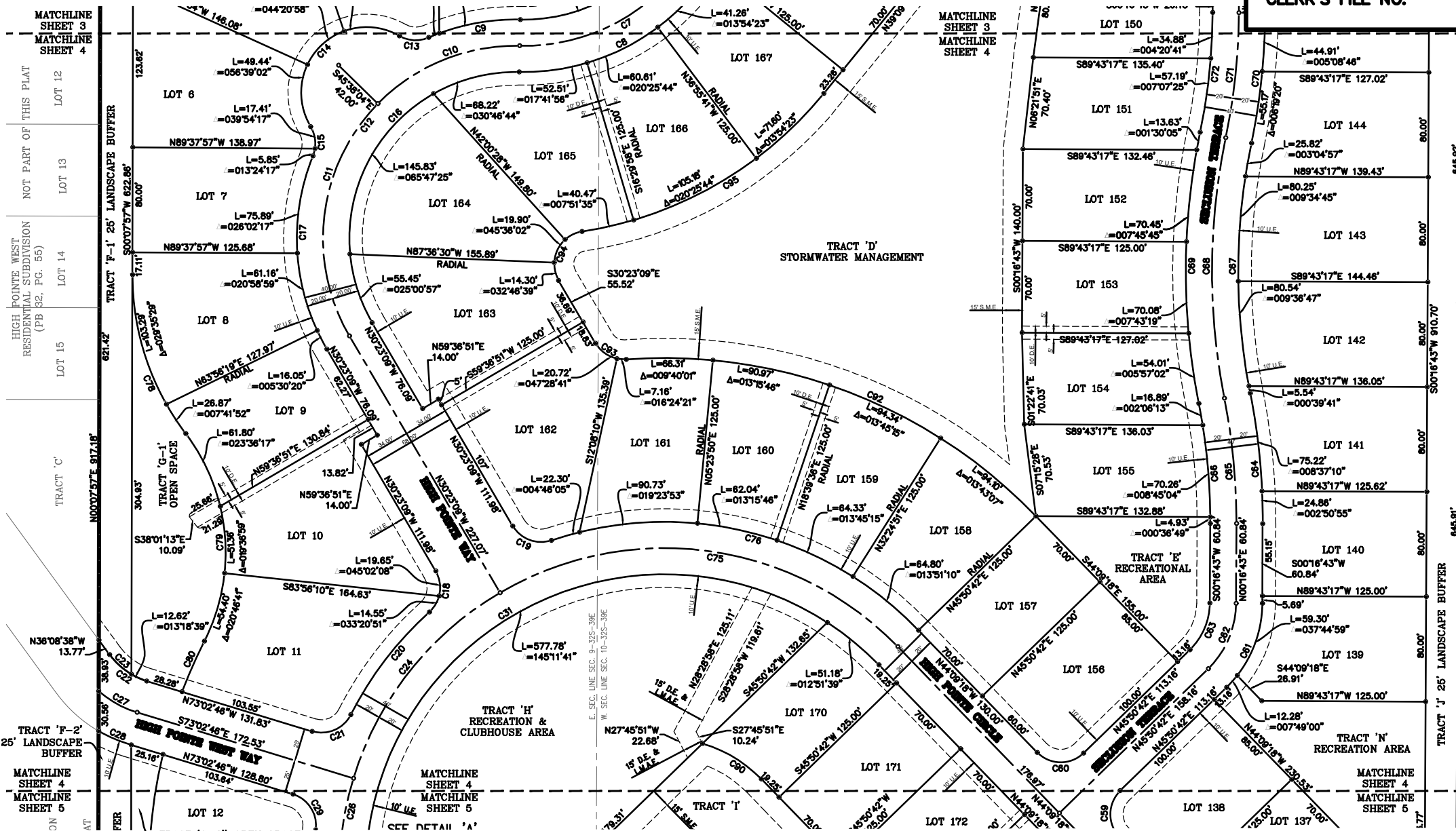
HIGH POINTE SUBDIVISION – PHASE 1 P.D.

BEING A PORTION OF TRACTS 1 & 32 SECTION 9, TOWNSHIP 32 SOUTH, RANGE 39 EAST, ACCORDING TO THE LAST GENERAL PLAT OF LANDS OF THE INDIAN RIVER FARMS COMPANY SUBDIVISION AS RECORDED IN PLAT BOOK 2, PAGE 25, PUBLIC RECORDS OF ST. LUCIE COUNTY, FLORIDA, SAID LAND NOW LYING AND BEING IN INDIAN RIVER COUNTY, FLORIDA, AND ALSO A PORTION OF SECTION 10, TOWNSHIP 32 SOUTH, RANGE 39 EAST

COVENANTS, RESTRICTIONS OR RESERVATIONS AFFECTING THE OWNERSHIP OR USE OF THE PROPERTY SHOWN IN THIS PLAT ARE FILED IN OFFICIAL RECORD BOOK 3565, PAGE 2063, PUBLIC RECORDS OF INDIAN RIVER COUNTY, FLORIDA.



PLAT BOOK _____
PAGE _____
CFN _____
CLERK'S FILE NO. _____



SHEET INDEX



INDIAN RIVER COUNTY
(O.R.B. 1586, PG. 2835)
NOT PART OF THIS PLAT
UNPLATTED

ABBREVIATIONS

- Δ = CENTRAL ANGLE
- C.M. = CONCRETE MONUMENT
- CH. = CHORD
- D.E. = DRAINAGE EASEMENT
- I.R.C. = IRON ROD WITH CAP
- I.R.F.W.C.D. = INDIAN RIVER FARMS WATER CONTROL DISTRICT
- L = ARC LENGTH
- L.A.E. = LIMITED ACCESS EASEMENT
- L.S.B. = LAND SURVEYING BUSINESS
- N.A.V.D. = NORTH AMERICAN VERTICAL DATUM
- OA. = OVERALL
- O.R.B. = OFFICIAL RECORD BOOK
- P.B.S. = PLAT BOOK ST. LUCIE COUNTY
- P.C.P. = PERMANENT CONTROL POINT
- PG. = PAGE
- P.L.S. = PROFESSIONAL LAND SURVEYOR
- P.O.B. = POINT OF BEGINNING
- P.O.C. = POINT OF COMMENCEMENT
- P.R.M. = PERMANENT REFERENCE MONUMENT
- R = RADIUS
- R/W = RIGHT OF WAY
- S.M.E. = STORMWATER MAINTENANCE EASEMENT
- U.E. = UTILITY EASEMENT

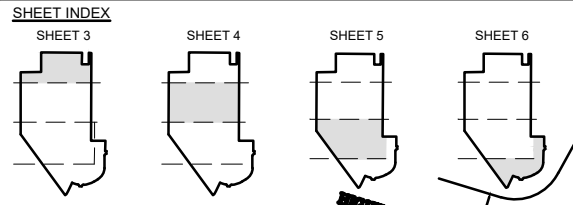
Curve Table					Curve Table					Curve Table					Curve Table									
CURVE	LENGTH	RADIUS	Δ	CH. BEARING	CH. LENGTH	CURVE	LENGTH	RADIUS	Δ	CH. BEARING	CH. LENGTH	CURVE	LENGTH	RADIUS	Δ	CH. BEARING	CH. LENGTH	CURVE	LENGTH	RADIUS	Δ	CH. BEARING	CH. LENGTH	
C7	136.22	150.00	52°02'02"	N85°10'57"E	131.59	C21	34.98	25.00	80°10'28"	N66°52'00"E	32.20	C84	100.08	500.00	11°28'08"	N5°27'20"W	99.91	C90	53.07	103.00	29°31'08"	N58°54'32"W	52.48	
C8	154.39	170.00	52°02'02"	N85°10'57"E	149.14	C22	35.43	54.81	37°02'12"	S54°35'42"E	34.81	C85	96.18	485.12	11°21'34"	N5°27'43"W	96.02	C92	345.72	393.00	50°24'09"	N89°04'07"W	334.68	
C9	71.73	167.00	24°36'33"	S78°53'41"W	71.18	C23	22.82	54.25	24°05'57"	S48°03'53"E	22.65	C86	92.07	460.00	11°28'06"	N5°27'20"W	91.62	C93	27.87	25.00	63°53'02"	S62°19'40"E	26.46	
C10	120.16	147.00	46°50'03"	S67°46'57"W	116.84	C24	184.65	248.00	42°39'37"	S38°17'03"W	180.42	C87	192.15	480.00	22°56'11"	S0°16'43"W	190.87	C94	48.76	25.00	111°44'47"	S25°29'14"W	41.39	
C11	191.78	147.00	74°45'05"	S8°59'23"W	178.47	C25	414.42	248.00	85°44'38"	S11°44'32"W	387.86	C88	200.01	499.97	22°55'15"	N0°17'14"E	198.68	C95	217.25	295.00	42°11'42"	N60°15'47"E	212.37	
C12	311.94	147.00	121°35'07"	S30°24'25"W	256.62	C26	27.17	107.68	14°27'14"	S67°11'49"E	27.09	C89	208.17	520.00	22°56'11"	S0°16'43"W	206.78							
C13	23.26	25.00	53°18'34"	S86°45'18"E	22.43	C27	33.76	80.00	24°10'41"	S60°57'25"E	33.51	C90	100.08	500.00	11°28'06"	N6°00'46"E	99.91							
C14	131.83	50.00	151°04'07"	S44°21'56"W	96.83	C28	27.17	107.68	14°27'14"	S67°11'49"E	27.09	C91	96.11	479.90	11°28'28"	N6°00'19"E	95.95							
C15	23.26	25.00	53°18'34"	N4°30'51"W	22.43	C29	34.98	25.00	80°10'28"	N32°57'32"W	32.20	C92	92.07	460.00	11°28'06"	N6°00'46"E	91.62							
C16	269.50	127.00	121°35'07"	S30°24'24"W	221.71	C30	884.35	228.00	171°58'30"	S49°51'27"W	454.88	C93	329.96	248.00	76°13'51"	N82°16'13"W	306.16							
C17	153.10	167.00	52°31'36"	S4°07'21"E	147.79	C31	39.27	25.00	90°00'00"	S0°50'42"W	35.36	C94	304.21	268.00	65°02'13"	N76°15'08"W	288.14							
C18	34.20	25.00	78°23'00"	N8°48'21"E	31.60	C32	61.58	90.00	45°33'59"	N23°03'43"E	69.70	C95	130.16	200.00	37°17'21"	S18°30'43"E	127.88							
C19	34.20	25.00	78°23'00"	S89°34'39"E	31.60	C33	55.67	70.00	45°33'59"	N23°03'43"E	54.21													
C20	98.25	268.00	21°13'04"	S37°22'18"W	98.88	C34	39.76	50.00	45°33'59"	N23°03'43"E	38.72													

SYMBOL LEGEND

- SET 4"x4" CONCRETE PERMANENT REFERENCE MONUMENT (PRM) LB#6905. FOUND MONUMENTS WILL BE NOTED AS FOUND
- LOT CORNER MARKER 5/8" IRC, LB#6905
- PERMANENT CONTROL POINT (PCP) LB# 6905

HOUSTON, SCHULKE, BITTLE, & STODDARD, INC. D/B/A
MERIDIAN
LAND SURVEYORS
1717 INDIAN RIVER BLVD, SUITE 201
VERO BEACH, FL. 32960 LB#6905
PHONE: 772-794-1213, FAX: 772-794-1096
EMAIL: INFO@MLS-LB6905.COM

SHEET
4 of 6

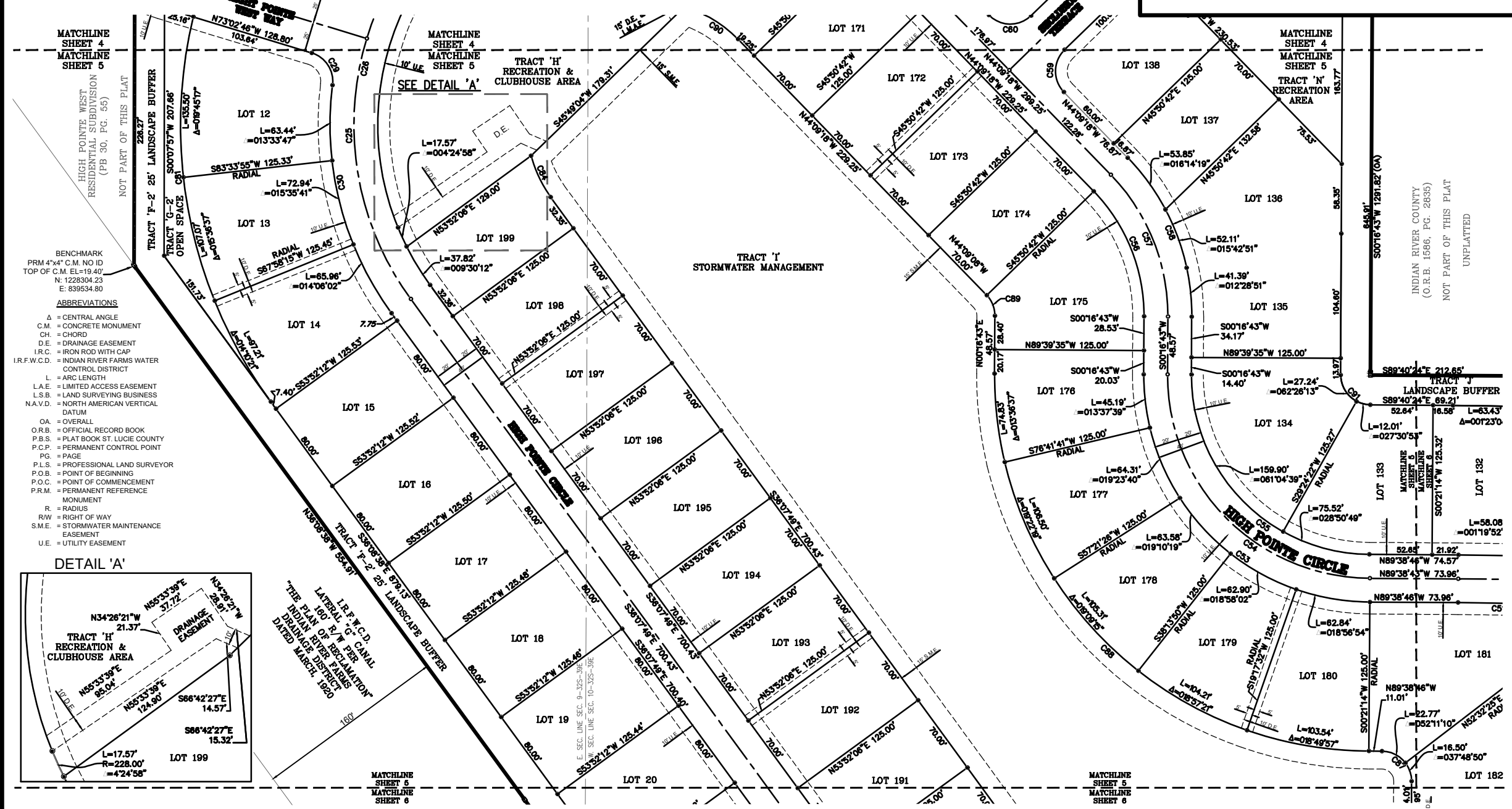


HIGH POINTE SUBDIVISION – PHASE 1 P.D.

BEING A PORTION OF TRACTS 1 & 32 SECTION 9, TOWNSHIP 32 SOUTH, RANGE 39 EAST, ACCORDING TO THE LAST GENERAL PLAT OF LANDS OF THE INDIAN RIVER FARMS COMPANY SUBDIVISION AS RECORDED IN PLAT BOOK 2, PAGE 25, PUBLIC RECORDS OF ST. LUCIE COUNTY, FLORIDA, SAID LAND NOW LYING AND BEING IN INDIAN RIVER COUNTY, FLORIDA, AND ALSO A PORTION OF SECTION 10, TOWNSHIP 32 SOUTH, RANGE 39 EAST

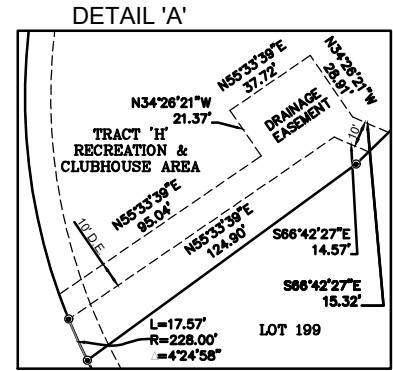
COVENANTS, RESTRICTIONS OR RESERVATIONS AFFECTING THE OWNERSHIP OR USE OF THE PROPERTY SHOWN IN THIS PLAT ARE FILED IN OFFICIAL RECORD BOOK 3565, PAGE 2063, PUBLIC RECORDS OF INDIAN RIVER COUNTY, FLORIDA.

PLAT BOOK _____
 PAGE _____
 CFN _____
 CLERK'S FILE NO. _____

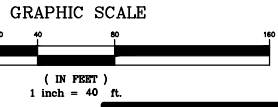


BENCHMARK
 PRM 4"x4" C.M. NO ID
 TOP OF C.M. EL.=19.40'
 N: 1228304.23
 E: 839534.80

- ABBREVIATIONS**
- A = CENTRAL ANGLE
 - C.M. = CONCRETE MONUMENT
 - CH. = CHORD
 - D.E. = DRAINAGE EASEMENT
 - I.R.C. = IRON ROD WITH CAP
 - I.R.F.W.C.D. = INDIAN RIVER FARMS WATER CONTROL DISTRICT
 - L = ARC LENGTH
 - L.A.E. = LIMITED ACCESS EASEMENT
 - L.S.B. = LAND SURVEYING BUSINESS
 - N.A.V.D. = NORTH AMERICAN VERTICAL DATUM
 - OA = OVERALL
 - O.R.B. = OFFICIAL RECORD BOOK
 - P.B.S. = PLAT BOOK ST. LUCIE COUNTY
 - P.C.P. = PERMANENT CONTROL POINT
 - PG. = PAGE
 - P.L.S. = PROFESSIONAL LAND SURVEYOR
 - P.O.B. = POINT OF BEGINNING
 - P.O.C. = POINT OF COMMENCEMENT
 - P.R.M. = PERMANENT REFERENCE MONUMENT
 - R = RADIUS
 - R.W. = RIGHT OF WAY
 - S.M.E. = STORMWATER MAINTENANCE EASEMENT
 - U.E. = UTILITY EASEMENT



Curve Table					Curve Table					Curve Table							
CURVE	LENGTH	RADIUS	Δ	CH. BEARING	CH. LENGTH	CURVE	LENGTH	RADIUS	Δ	CH. BEARING	CH. LENGTH	CURVE	LENGTH	RADIUS	Δ	CH. BEARING	CH. LENGTH
C25	229.77'	248.00'	53°06'02"	S9°35'17"E	221.64'	C56	115.92'	150.00'	44°16'37"	N21°51'36"W	113.05'	C87	39.27'	25.00'	90°00'00"	N44°38'46"W	35.36'
C26	414.42'	248.00'	95°44'38"	S11°44'32"W	367.86'	C57	131.43'	170.00'	44°17'40"	N21°52'08"W	128.18'	C88	494.39'	315.00'	89°55'28"	S44°41'01"E	445.18'
C29	34.98'	25.00'	80°10'28"	N32°57'32"W	32.20'	C58	147.35'	190.00'	44°26'01"	N21°56'17"W	143.68'	C89	18.98'	25.00'	43°29'40"	N21°28'07"W	18.53'
C30	202.34'	268.00'	43°15'30"	S14°30'02"E	197.57'	C59	39.27'	25.00'	90°00'00"	S0°50'42"W	35.36'	C90	53.07'	103.00'	29°31'08"	N58°54'52"W	52.48'
C53	298.82'	190.00'	90°06'37"	S44°46'34"E	288.96'	C60	39.27'	25.00'	90°00'00"	S89°09'18"E	35.36'	C91	39.25'	25.00'	89°57'07"	S44°41'51"E	35.34'
C54	267.43'	170.00'	90°07'54"	S44°47'14"E	240.69'	C81	339.78'	393.00'	49°32'15"	S11°22'31"E	329.30'						
C55	235.42'	150.00'	89°55'28"	S44°41'01"E	211.99'	C84	38.54'	103.00'	21°26'18"	S25°24'36"E	38.32'						



HOUSTON, SCHULKE, BITTLE, & STODDARD, INC. D/B/A
MERIDIAN
 LAND SURVEYORS
 1717 INDIAN RIVER BLVD., SUITE 201
 VERO BEACH, FL. 32960 LB6905
 PHONE: 772-794-1213, FAX: 772-794-1096
 EMAIL: INFO@MLS-LB6905.COM

SHEET
5 of 6

HIGH POINTE SUBDIVISION – PHASE 1 P.D.

BEING A PORTION OF TRACTS 1 & 32 SECTION 9, TOWNSHIP 32 SOUTH, RANGE 39 EAST, ACCORDING TO THE LAST GENERAL PLAT OF LANDS OF THE INDIAN RIVER FARMS COMPANY SUBDIVISION AS RECORDED IN PLAT BOOK 2, PAGE 25, PUBLIC RECORDS OF ST. LUCIE COUNTY, FLORIDA, SAID LAND NOW LYING AND BEING IN INDIAN RIVER COUNTY, FLORIDA, AND ALSO A PORTION OF SECTION 10, TOWNSHIP 32 SOUTH, RANGE 39 EAST

COVENANTS, RESTRICTIONS OR RESERVATIONS AFFECTING THE OWNERSHIP OR USE OF THE PROPERTY SHOWN IN THIS PLAT ARE FILED IN OFFICIAL RECORD BOOK 3565, PAGE 2063, PUBLIC RECORDS OF INDIAN RIVER COUNTY, FLORIDA.

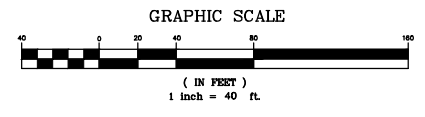
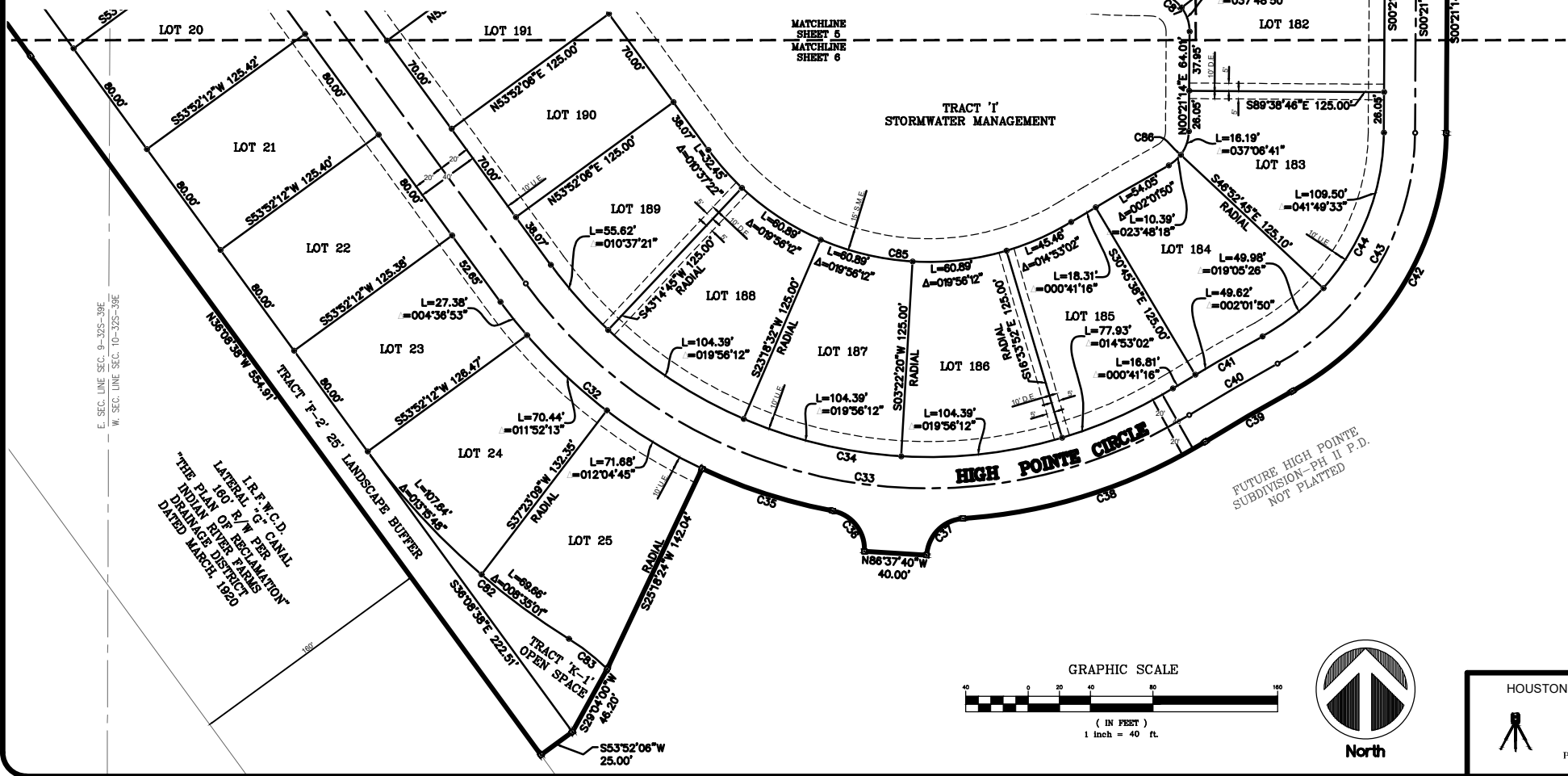
PLAT BOOK _____
 PAGE _____
 CFN _____
 CLERK'S FILE NO. _____

CURVE	LENGTH	RADIUS	Δ	CH. BEARING	CH. LENGTH
C32	169.50'	340.00'	28°33'51"	S50°24'40"E	167.75'
C33	476.50'	320.00'	85°19'00"	S78°47'24"E	433.68'
C34	446.72'	300.00'	85°19'00"	S78°47'24"E	406.58'
C35	88.14'	340.00'	14°51'10"	N72°07'11"W	87.89'
C36	36.18'	25.00'	82°55'05"	N38°05'13"W	33.10'
C37	36.18'	25.00'	82°55'05"	S44°49'52"W	33.10'
C38	164.60'	340.00'	27°44'19"	S72°25'16"W	163.00'
C39	64.53'	1360.00'	2°43'07"	S59°54'39"W	64.52'
C40	65.48'	1380.00'	2°43'07"	S59°54'39"W	65.47'
C41	66.43'	1400.00'	2°43'07"	S59°54'39"W	66.42'
C42	202.01'	190.00'	60°54'58"	S30°48'44"W	192.63'
C43	180.74'	170.00'	60°54'58"	S30°48'44"W	172.35'
C44	159.48'	150.00'	60°54'58"	N30°48'44"E	152.07'
C45	40.83'	25.00'	93°34'49"	S47°08'39"W	36.44'

CURVE	LENGTH	RADIUS	Δ	CH. BEARING	CH. LENGTH
C46	38.63'	25.00'	88°32'23"	N43°54'57"W	34.90'
C47	47.83'	2480.00'	1°06'18"	N86°37'10"W	47.83'
C48	107.09'	2480.00'	2°28'27"	N88°24'32"W	107.08'
C49	154.92'	2480.00'	3°34'45"	N87°51'23"W	154.90'
C50	17.98'	2500.00'	0°24'44"	S86°16'26"E	17.98'
C51	62.70'	2460.00'	1°27'37"	N88°54'57"W	62.70'
C52	156.13'	2500.00'	3°34'49"	N87°51'21"W	156.11'
C82	177.30'	465.00'	21°50'48"	S47°04'03"E	176.23'
C83	31.35'	150.00'	11°58'25"	N52°00'14"W	31.29'
C85	260.59'	175.00'	85°19'00"	S78°47'24"E	237.17'
C86	26.58'	25.00'	60°54'58"	N30°48'44"E	25.35'
C87	39.27'	25.00'	90°00'00"	N44°38'46"W	35.36'
C96	143.49'	2625.00'	3°07'55"	N88°06'26"W	143.47'

- SYMBOL LEGEND**
- SET 4"x4" CONCRETE PERMANENT REFERENCE MONUMENT (PRM) LB#6905. FOUND MONUMENTS WILL BE NOTED AS FOUND
 - LOT CORNER MARKER 5/8" IRC, LB#6905
 - PERMANENT CONTROL POINT (PCP) LB# 6905

- ABBREVIATIONS**
- Δ = CENTRAL ANGLE
 - C.M. = CONCRETE MONUMENT
 - CH. = CHORD
 - D.E. = DRAINAGE EASEMENT
 - I.R.C. = IRON ROD WITH CAP
 - I.R.F.W.C.D. = INDIAN RIVER FARMS WATER CONTROL DISTRICT
 - L = ARC LENGTH
 - L.A.E. = LIMITED ACCESS EASEMENT
 - L.S.B. = LAND SURVEYING BUSINESS
 - N.A.V.D. = NORTH AMERICAN VERTICAL DATUM
 - OA = OVERALL
 - O.R.B. = OFFICIAL RECORD BOOK
 - P.B.S. = PLAT BOOK ST. LUCIE COUNTY
 - P.C.P. = PERMANENT CONTROL POINT
 - PG. = PAGE
 - P.L.S. = PROFESSIONAL LAND SURVEYOR
 - P.O.B. = POINT OF BEGINNING
 - P.O.C. = POINT OF COMMENCEMENT
 - P.R.M. = PERMANENT REFERENCE MONUMENT
 - R. = RADIUS
 - R.W. = RIGHT OF WAY
 - S.M.E. = STORMWATER MAINTENANCE EASEMENT
 - U.E. = UTILITY EASEMENT



HOUSTON, SCHULKE, BITTLE, & STODDARD, INC. D/B/A
MERIDIAN
 LAND SURVEYORS
 1717 INDIAN RIVER BLVD., SUITE 201
 VERO BEACH, FL. 32960, LB#6905
 PHONE: 772-794-1213, FAX: 772-794-1096
 EMAIL: INFO@MLS-LB6905.COM

SHEET
6 of 6