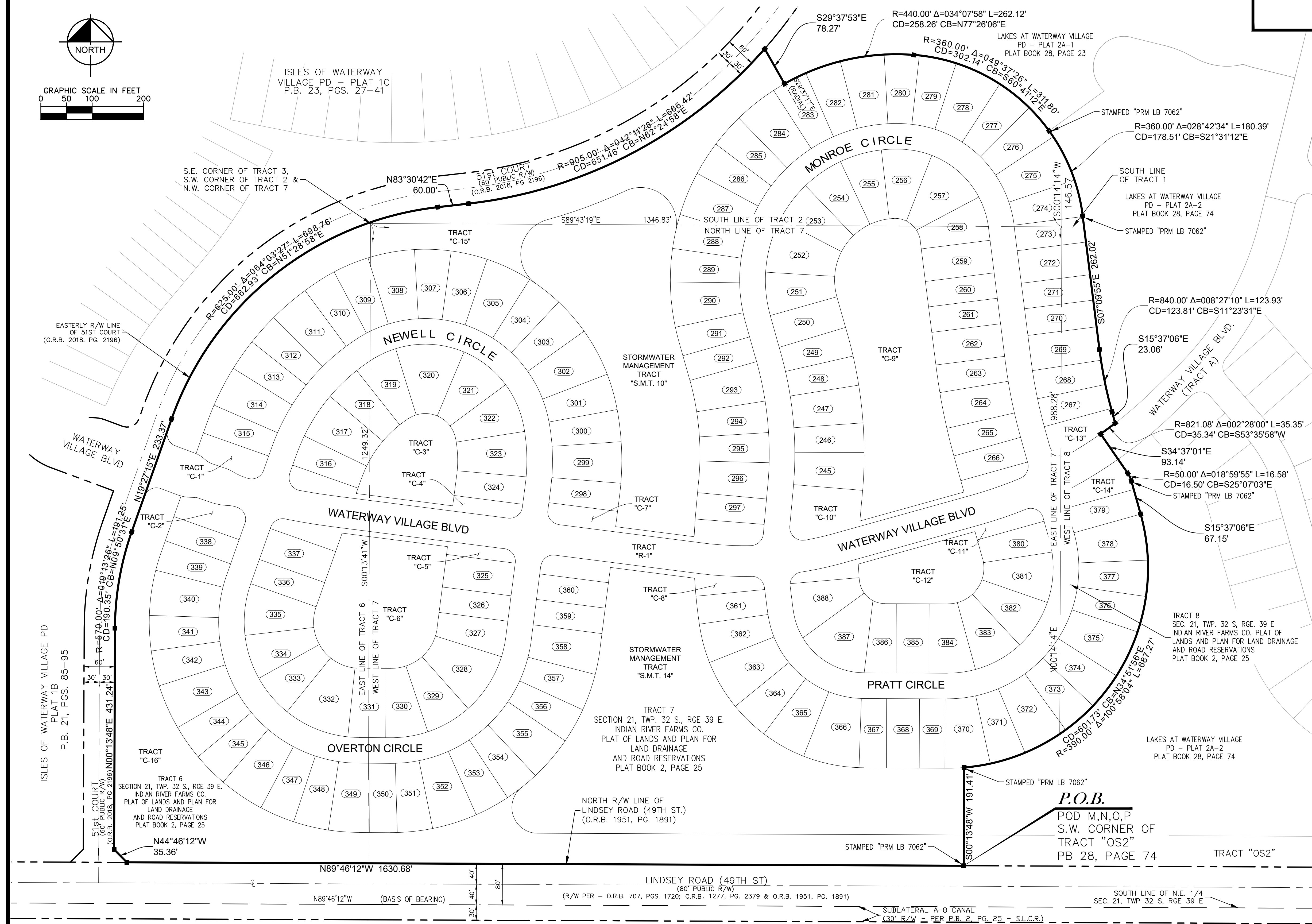
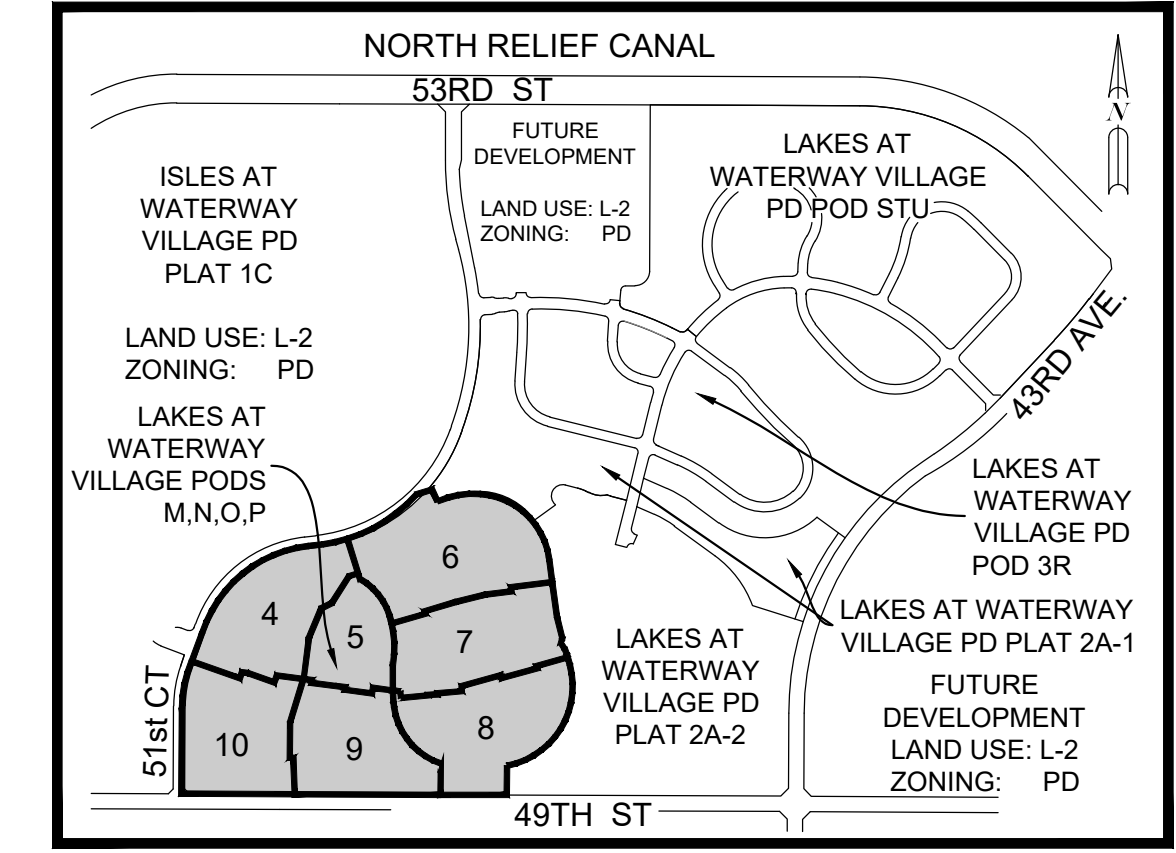
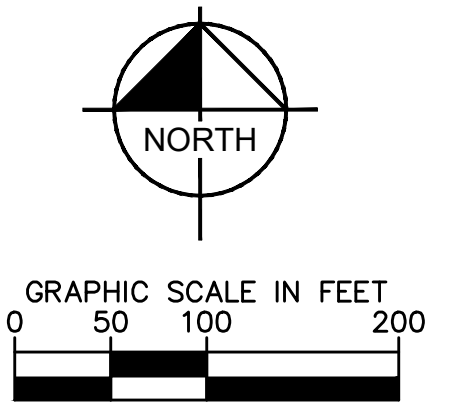


# LAKES AT WATERWAY VILLAGE PD - PODS M,N,O,P

BEING A REPLAT OF A PORTION OF TRACTS 1, 2, 3, 6, 7 AND 8, SECTION 21, TOWNSHIP 32 SOUTH, RANGE 39 EAST, INDIAN RIVER FARMS CO. PLAT OF LANDS AND PLAN FOR LAND DRAINAGE AND ROAD RESERVATIONS, ACCORDING TO THE PLAT THEREOF, AS RECORDED IN PLAT BOOK 2, PAGE 25, PUBLIC RECORDS OF ST. LUCIE COUNTY, FLORIDA, NOW BEING IN INDIAN RIVER COUNTY, FLORIDA

PLAT BOOK \_\_\_\_\_  
 PAGE \_\_\_\_\_  
 CFN \_\_\_\_\_  
 CLERK'S FILE NUMBER \_\_\_\_\_



**KEY MAP**  
N.T.S.

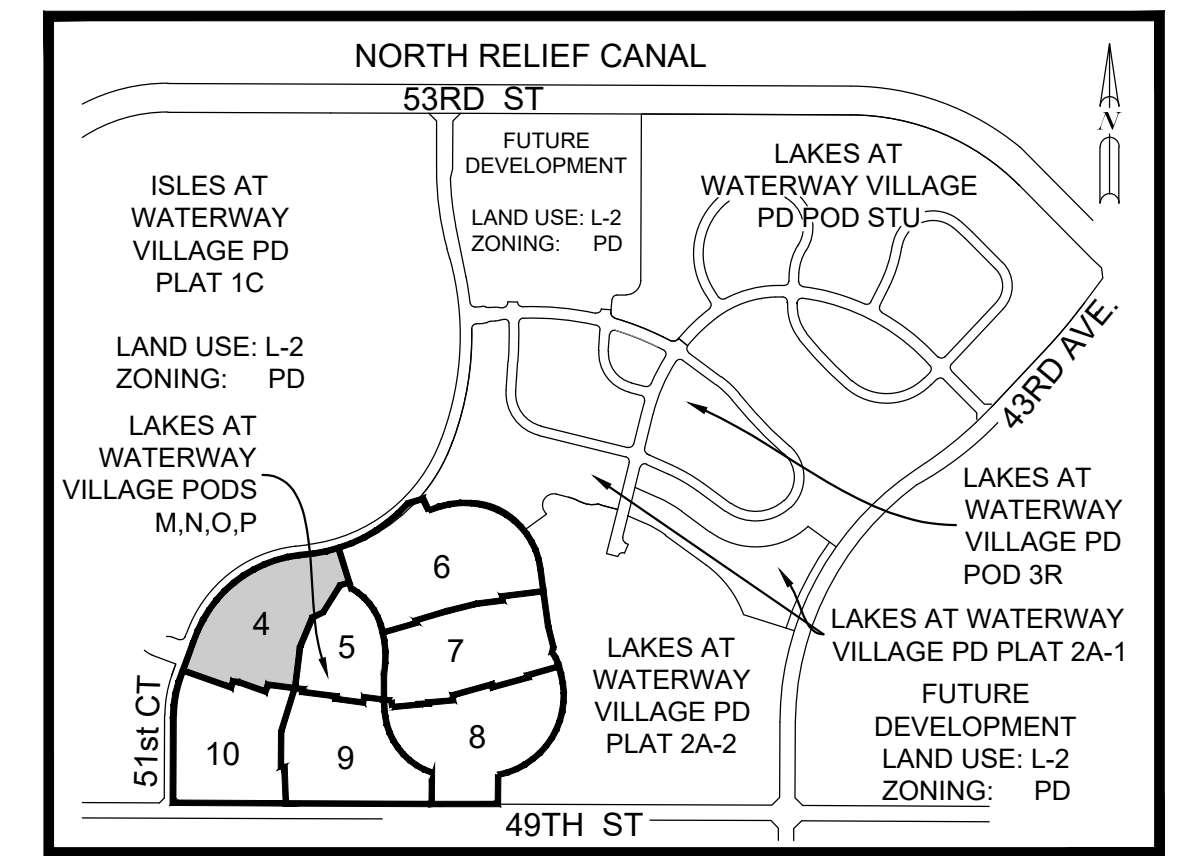
- LEGEND OF SYMBOLS**
- PLAT BOUNDARY
  - PARCEL LINE
  - - - - DRAINAGE EASEMENT LINE
  - - - - UTILITY EASEMENT LINE
  - - - - ROAD CENTER LINE
  - - - - SECTION LINE
  - - - - MATCH LINE
  - ## LOT NUMBER / TRACT NUMBER
  - PRM. 4x4 CMD OR IRC STAMPED "PRM KHA LB 696" OR AS NOTED
  - PCP, NAIL AND DISC STAMPED "PCP KHA LB 696"
  - LOT CORNER
- ABBREVIATIONS**
- Δ DELTA (CENTRAL ANGLE)
  - CB CHORD BEARING
  - CCR CERTIFIED CORNER RECORD
  - CD CHORD DISTANCE
  - CMD CONCRETE MONUMENT AND DISK
  - D.E. DRAINAGE EASEMENT
  - L ARC LENGTH
  - L.A.E. LIMITED ACCESS EASEMENT
  - LB LICENSED BUSINESS
  - N.R. NON-RADIAL
  - ORB OFFICIAL RECORDS BOOK
  - P.B. PLAT BOOK
  - PC POINT OF CURVATURE
  - PCC POINT OF COMPOUND CURVATURE
  - PRC POINT OF REVERSE CURVATURE
  - PCP PERMANENT CONTROL POINT
  - PG. PAGE
  - PI POINT OF INTERSECTION
  - P.O.B. POINT OF BEGINNING
  - PRM PERMANENT REFERENCE MONUMENT
  - PT POINT OF TANGENCY
  - R RADIUS
  - RAD. RADIAL
  - RGE RANGE
  - R/W RIGHT-OF-WAY
  - SEC SECTION
  - TWP TOWNSHIP
  - IRC IRON ROD WITH CAP
  - EL. ELEVATION
  - NAVD 88' NORTH AMERICAN VERTICAL DATUM OF 1988
  - U.E. UTILITY EASEMENT
  - W.S.E. WATER AND SEWER EASEMENT
  - W.M.E. WATER MANAGEMENT EASEMENT
  - S.M.T. STORMWATER MANAGEMENT TRACT

THIS INSTRUMENT WAS PREPARED BY:  
 E.C. DEMETER P.S.M. 5179, STATE OF FLORIDA  
**KIMLEY-HORN AND ASSOCIATES, INC**  
 445 24TH STREET, SUITE 200  
 VERO BEACH, FLORIDA 32960  
 LB 696  
 ON SEPTEMBER 11, 2018

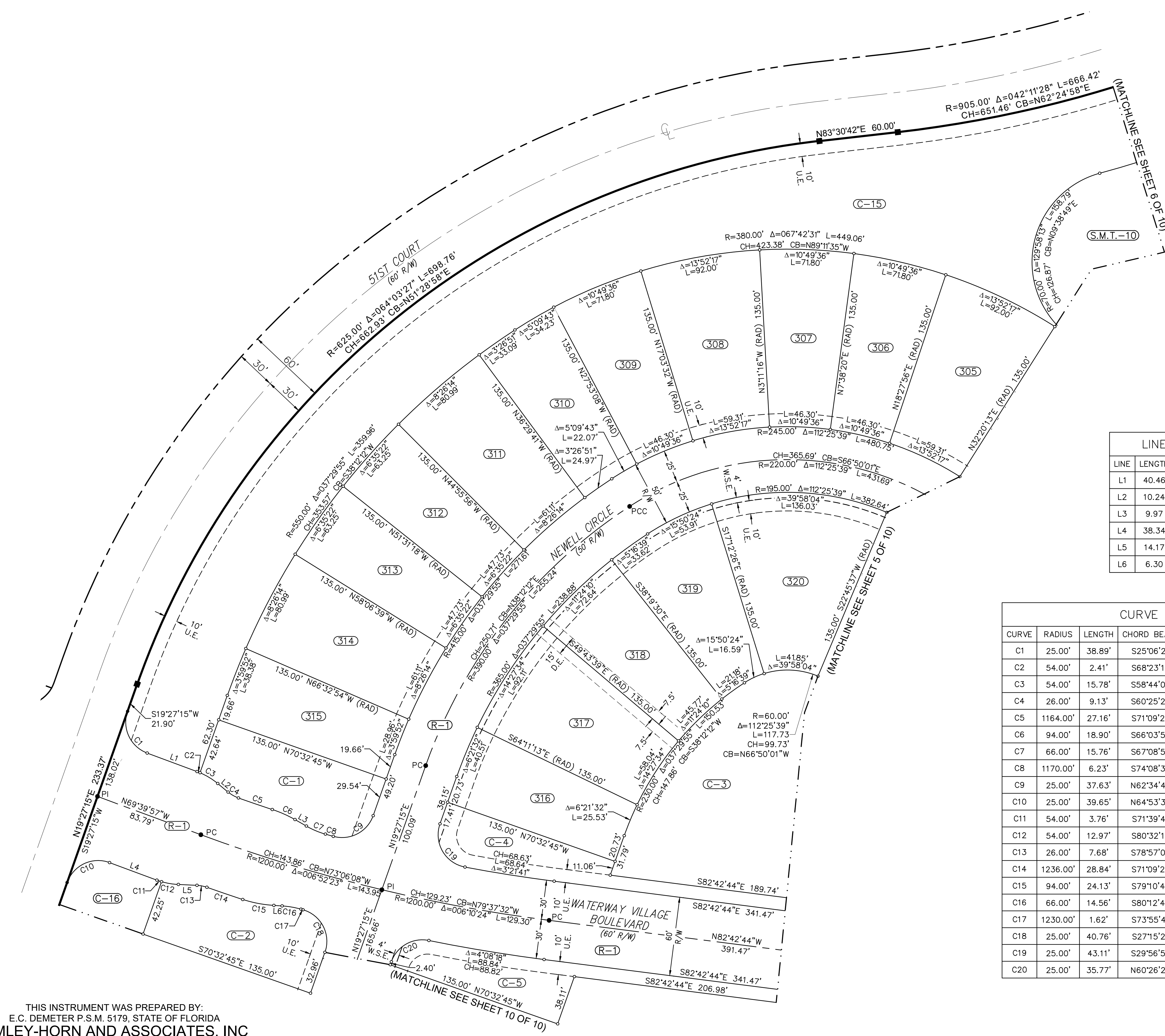
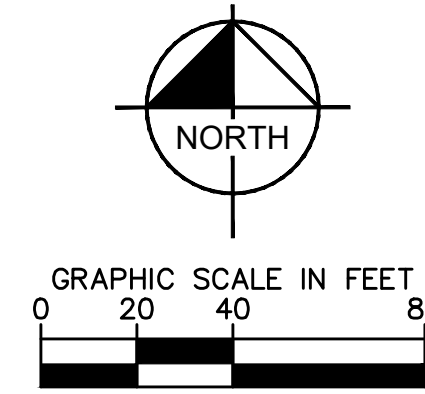
# LAKES AT WATERWAY VILLAGE PD - PODS M,N,O,P

BEING A REPLAT OF A PORTION OF TRACTS 1, 2, 3, 6, 7 AND 8, SECTION 21, TOWNSHIP 32 SOUTH, RANGE 39 EAST, INDIAN RIVER FARMS CO. PLAT OF LANDS AND PLAN FOR LAND DRAINAGE AND ROAD RESERVATIONS, ACCORDING TO THE PLAT THEREOF, AS RECORDED IN PLAT BOOK 2, PAGE 25, PUBLIC RECORDS OF ST. LUCIE COUNTY, FLORIDA, NOW BEING IN INDIAN RIVER COUNTY, FLORIDA

PLAT BOOK \_\_\_\_\_  
 PAGE \_\_\_\_\_  
 CFN \_\_\_\_\_  
 CLERK'S FILE NUMBER \_\_\_\_\_



KEY MAP  
N.T.S.



LINE TABLE		
LINE	LENGTH	BEARING
L1	40.46	S69°39'56.97"E
L2	10.24	S50°21'38.35"E
L3	9.97	S60°18'25.42"E
L4	38.34	S69°39'56.97"E
L5	14.17	S87°25'00.37"E
L6	6.30	S86°31'55.83"E

CURVE TABLE						
CURVE	RADIUS	LENGTH	CHORD BEARING	CHORD	DELTA	TANGENT
C1	25.00'	38.89'	S25°06'21"E	35.08'	89°07'11"	24.62'
C2	54.00'	2.41'	S68°23'14"E	2.41'	2°33'26"	1.21'
C3	54.00'	15.78'	S58°44'04"E	15.73'	16°44'52"	7.95'
C4	26.00'	9.13'	S60°25'27"E	9.09'	20°07'38"	4.61'
C5	1164.00'	27.16'	S71°09'22"E	27.16'	1°20'13"	13.58'
C6	94.00'	18.90'	S66°03'57"E	18.86'	11°31'03"	9.48'
C7	66.00'	15.76'	S67°08'54"E	15.72'	13°40'58"	7.92'
C8	1170.00'	6.23'	S74°08'33"E	6.23'	0°18'18"	3.11'
C9	25.00'	37.63'	N62°34'46"E	34.18'	86°15'04"	23.42'
C10	25.00'	39.65'	N64°53'39"E	35.63'	90°52'49"	25.39'
C11	54.00'	3.76'	S71°39'41"E	3.76'	3°59'28"	1.88'
C12	54.00'	12.97'	S80°12'13"E	12.94'	13°45'35"	6.52'
C13	26.00'	7.68'	S78°57'08"E	7.65'	16°55'45"	3.87'
C14	1236.00'	28.84'	S71°09'22"E	28.84'	1°20'13"	14.42'
C15	94.00'	24.13'	S79°10'42"E	24.06'	14°42'27"	12.13'
C16	66.00'	14.56'	S80°12'40"E	14.53'	12°38'31"	7.31'
C17	1230.00'	1.62'	S73°55'41"E	1.62'	0°04'32"	0.81'
C18	25.00'	40.76'	S27°15'21"E	36.39'	93°25'12"	26.54'
C19	25.00'	43.11'	S29°56'54"E	37.96'	98°48'18"	29.17'
C20	25.00'	35.77'	N60°26'24"E	32.79'	81°58'20"	21.72'

- LEGEND OF SYMBOLS**
- PLAT BOUNDARY
  - PARCEL LINE
  - - - - DRAINAGE EASEMENT LINE
  - - - - UTILITY EASEMENT LINE
  - ROAD CENTER LINE
  - - - - SECTION LINE
  - - - - MATCH LINE
  - ## LOT NUMBER / TRACT NUMBER
  - PRM, 4x4 CMD OR IRC STAMPED  
\*PRM KHA LB 698\* OR AS NOTED
  - PCP, NAIL AND DISC STAMPED  
\*PCP KHA LB 696\*
  - LOT CORNER

- ABBREVIATIONS**
- Δ DELTA (CENTRAL ANGLE)
  - CB CHORD BEARING
  - CCR CERTIFIED CORNER RECORD
  - CD CHORD DISTANCE
  - CMD CONCRETE MONUMENT AND DISK
  - D.E. DRAINAGE EASEMENT
  - L ARC LENGTH
  - L.A.E. LIMITED ACCESS EASEMENT
  - LB LICENSED BUSINESS
  - N.R. NON-RADIAL
  - ORB OFFICIAL RECORDS BOOK
  - P.B. PLAT BOOK
  - PC POINT OF CURVATURE
  - PCC POINT OF COMPOUND CURVATURE
  - PRC POINT OF REVERSE CURVATURE
  - PCP PERMANENT CONTROL POINT
  - PG. PAGE
  - PI POINT OF INTERSECTION
  - P.O.B. POINT OF BEGINNING
  - PRM PERMANENT REFERENCE MONUMENT
  - PT POINT OF TANGENCY
  - R RADIUS
  - RAD. RADIAL
  - RGE RANGE
  - R/W RIGHT-OF-WAY
  - SEC SECTION
  - TWP TOWNSHIP
  - IRC IRON ROD WITH CAP
  - EL. = ELEVATION
  - NAVD 88' NORTH AMERICAN VERTICAL DATUM OF 1988
  - U.E. UTILITY EASEMENT
  - W.S.E. WATER AND SEWER EASEMENT
  - W.M.E. WATER MANAGEMENT EASEMENT
  - S.M.T. STORMWATER MANAGEMENT TRACT

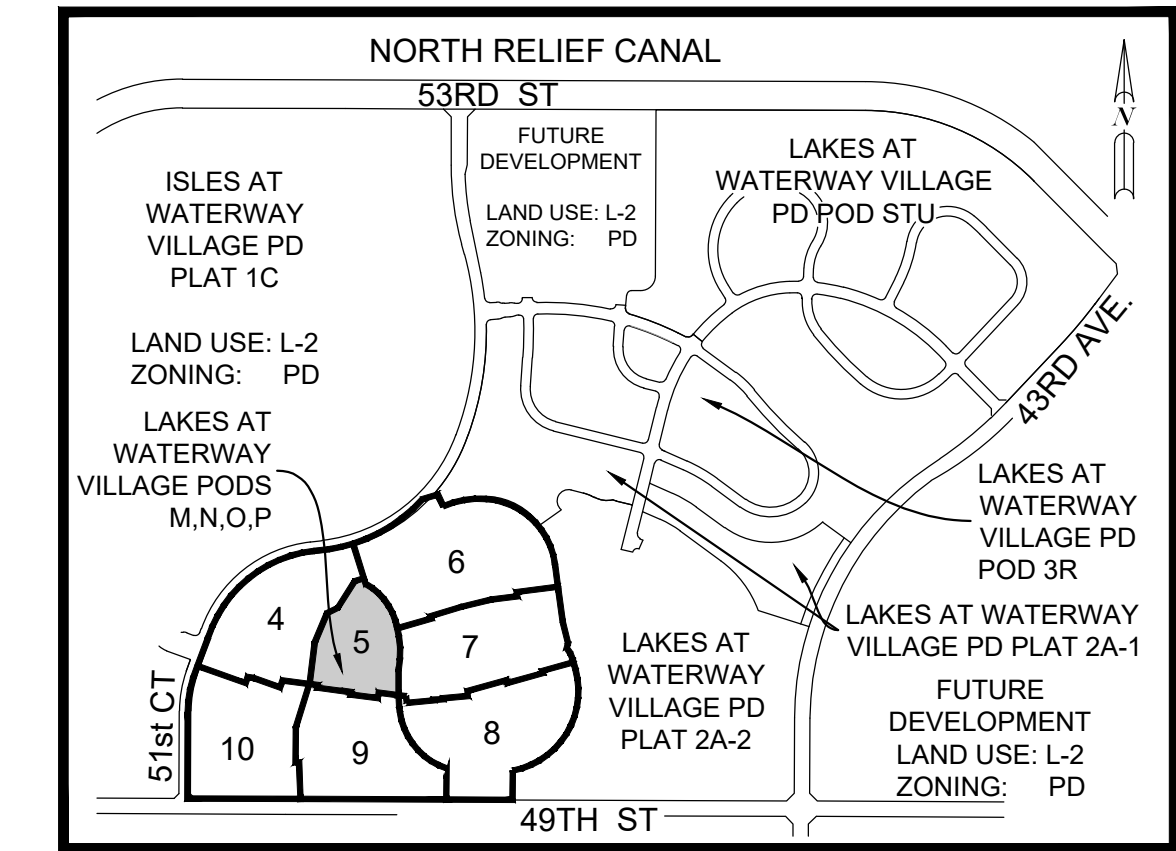
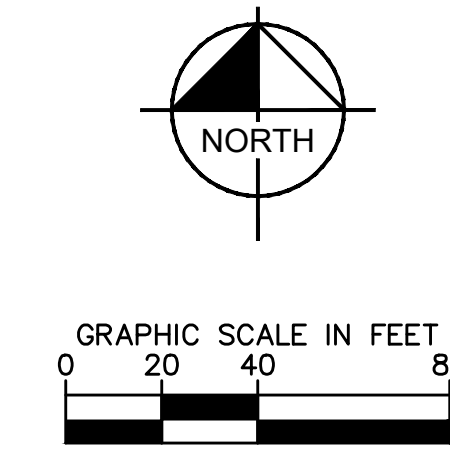
THIS INSTRUMENT WAS PREPARED BY:  
 E.C. DEMETER P.S.M. 5179, STATE OF FLORIDA  
**KIMLEY-HORN AND ASSOCIATES, INC**  
 445 24TH STREET, SUITE 200  
 VERO BEACH, FLORIDA 32960  
 LB 696  
 ON SEPTEMBER 11, 2018



# LAKES AT WATERWAY VILLAGE PD - PODS M,N,O,P

BEING A REPLAT OF A PORTION OF TRACTS 1, 2, 3, 6, 7 AND 8, SECTION 21, TOWNSHIP 32 SOUTH, RANGE 39 EAST, INDIAN RIVER FARMS CO. PLAT OF LANDS AND PLAN FOR LAND DRAINAGE AND ROAD RESERVATIONS, ACCORDING TO THE PLAT THEREOF, AS RECORDED IN PLAT BOOK 2, PAGE 25, PUBLIC RECORDS OF ST. LUCIE COUNTY, FLORIDA, NOW BEING IN INDIAN RIVER COUNTY, FLORIDA

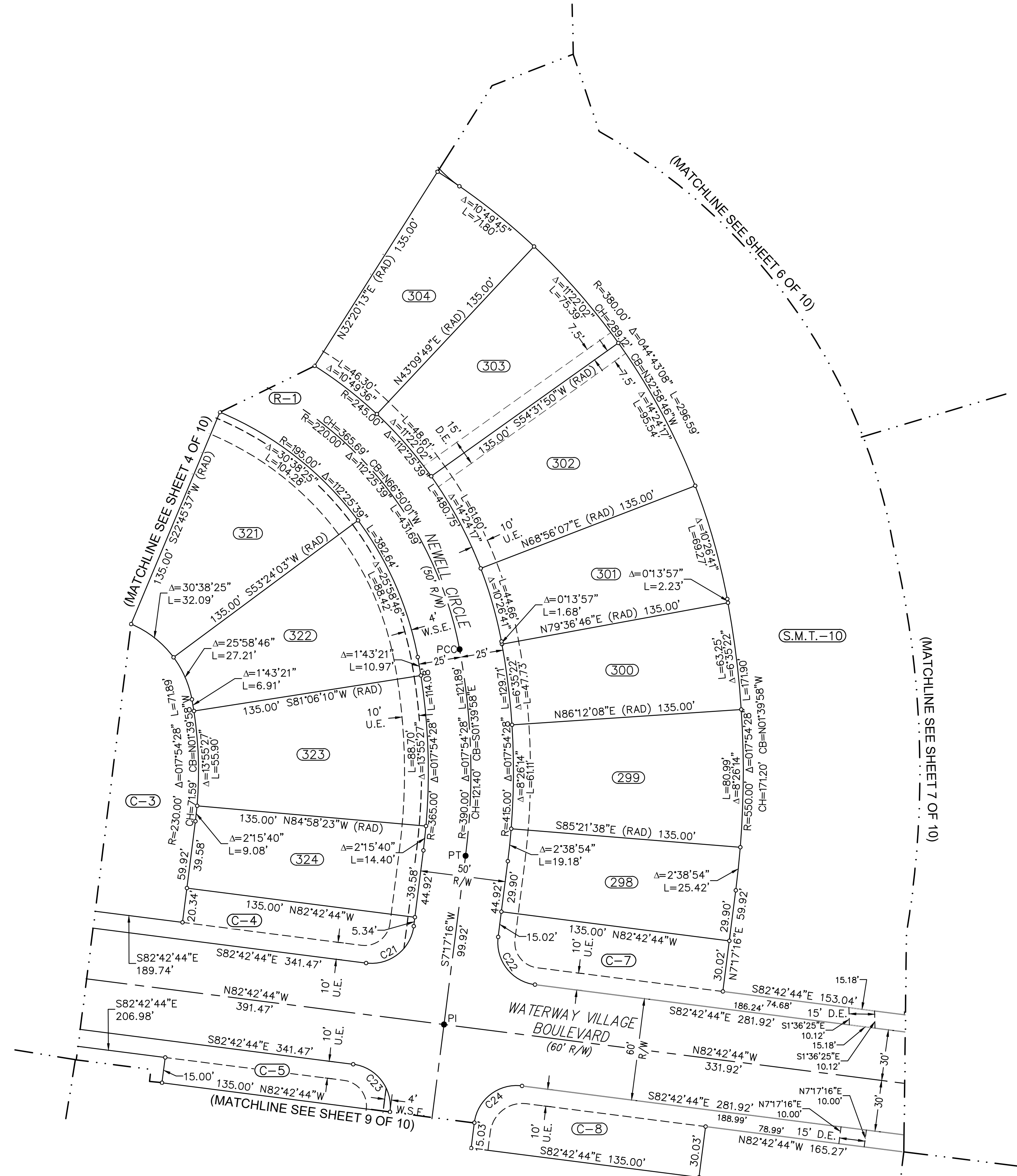
PLAT BOOK \_\_\_\_\_  
 PAGE \_\_\_\_\_  
 CFN \_\_\_\_\_  
 CLERK'S FILE NUMBER \_\_\_\_\_



KEY MAP  
N.T.S.

- LEGEND OF SYMBOLS**
- PLAT BOUNDARY
  - PARCEL LINE
  - - - - DRAINAGE EASEMENT LINE
  - - - - UTILITY EASEMENT LINE
  - - - - ROAD CENTER LINE
  - - - - SECTION LINE
  - - - - MATCH LINE
  - ## LOT NUMBER / TRACT NUMBER
  - PRM, 4x4 CMD OR IRC STAMPED "PRM KHA LB 696" OR AS NOTED
  - PCP, NAIL AND DISC STAMPED "PCP KHA LB 696"
  - LOT CORNER

- ABBREVIATIONS**
- Δ DELTA (CENTRAL ANGLE)
  - CB CHORD BEARING
  - CCR CERTIFIED CORNER RECORD
  - CD CHORD DISTANCE
  - CMD CONCRETE MONUMENT AND DISK
  - D.E. DRAINAGE EASEMENT
  - L ARC LENGTH
  - L.A.E. LIMITED ACCESS EASEMENT
  - LB LICENSED BUSINESS
  - N.R. NON-RADIAL
  - ORB OFFICIAL RECORDS BOOK
  - P.B. PLAT BOOK
  - PC POINT OF CURVATURE
  - PCC POINT OF COMPOUND CURVATURE
  - PRC POINT OF REVERSE CURVATURE
  - PCP PERMANENT CONTROL POINT
  - PG. PAGE
  - PI POINT OF INTERSECTION
  - P.O.B. POINT OF BEGINNING
  - PRM PERMANENT REFERENCE MONUMENT
  - PT POINT OF TANGENCY
  - R RADIUS
  - RAD. RADIAL
  - RGE RANGE
  - R/W RIGHT-OF-WAY
  - SEC SECTION
  - TWP TOWNSHIP
  - IRC IRON ROD WITH CAP
  - EL.= ELEVATION
  - NAVD 88' NORTH AMERICAN VERTICAL DATUM OF 1988
  - U.E. UTILITY EASEMENT
  - W.S.E. WATER AND SEWER EASEMENT
  - W.M.E. WATER MANAGEMENT EASEMENT
  - S.M.T. STORMWATER MANAGEMENT TRACT



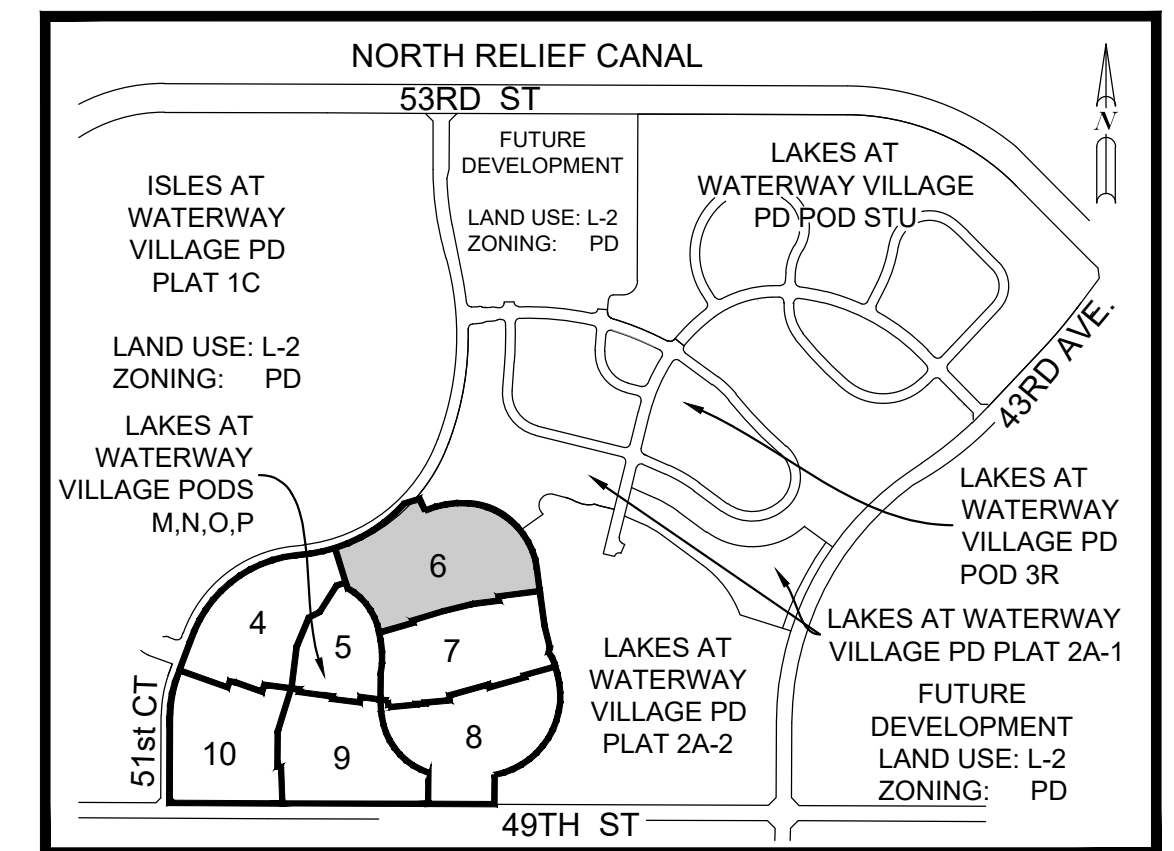
CURVE	RADIUS	LENGTH	CHORD BEARING	CHORD	DELTA	TANGENT
C21	25.00'	39.27'	N52°17'16"E	35.36'	90°00'00"	25.00'
C22	25.00'	39.27'	S37°42'44"E	35.36'	90°00'00"	25.00'
C23	25.00'	39.27'	S37°42'44"E	35.36'	90°00'00"	25.00'
C24	25.00'	39.27'	N52°17'16"E	35.36'	90°00'00"	25.00'

THIS INSTRUMENT WAS PREPARED BY:  
 E.C. DEMETER P.S.M. 5179, STATE OF FLORIDA  
**KIMLEY-HORN AND ASSOCIATES, INC**  
 445 24TH STREET, SUITE 200  
 VERO BEACH, FLORIDA 32960  
 LB 696  
 ON SEPTEMBER 11, 2018

# LAKES AT WATERWAY VILLAGE PD - PODS M,N,O,P

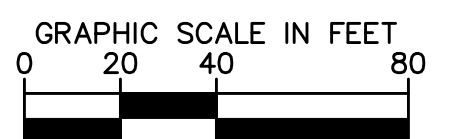
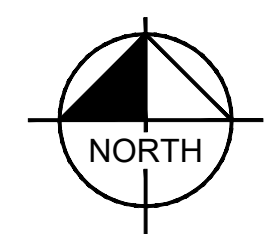
BEING A REPLAT OF A PORTION OF TRACTS 1, 2, 3, 6, 7 AND 8, SECTION 21, TOWNSHIP 32 SOUTH, RANGE 39 EAST, INDIAN RIVER FARMS CO. PLAT OF LANDS AND PLAN FOR LAND DRAINAGE AND ROAD RESERVATIONS, ACCORDING TO THE PLAT THEREOF, AS RECORDED IN PLAT BOOK 2, PAGE 25, PUBLIC RECORDS OF ST. LUCIE COUNTY, FLORIDA, NOW BEING IN INDIAN RIVER COUNTY, FLORIDA

PLAT BOOK \_\_\_\_\_  
 PAGE \_\_\_\_\_  
 CFN \_\_\_\_\_  
 CLERK'S FILE NUMBER \_\_\_\_\_



### KEY MAP

N.T.S.

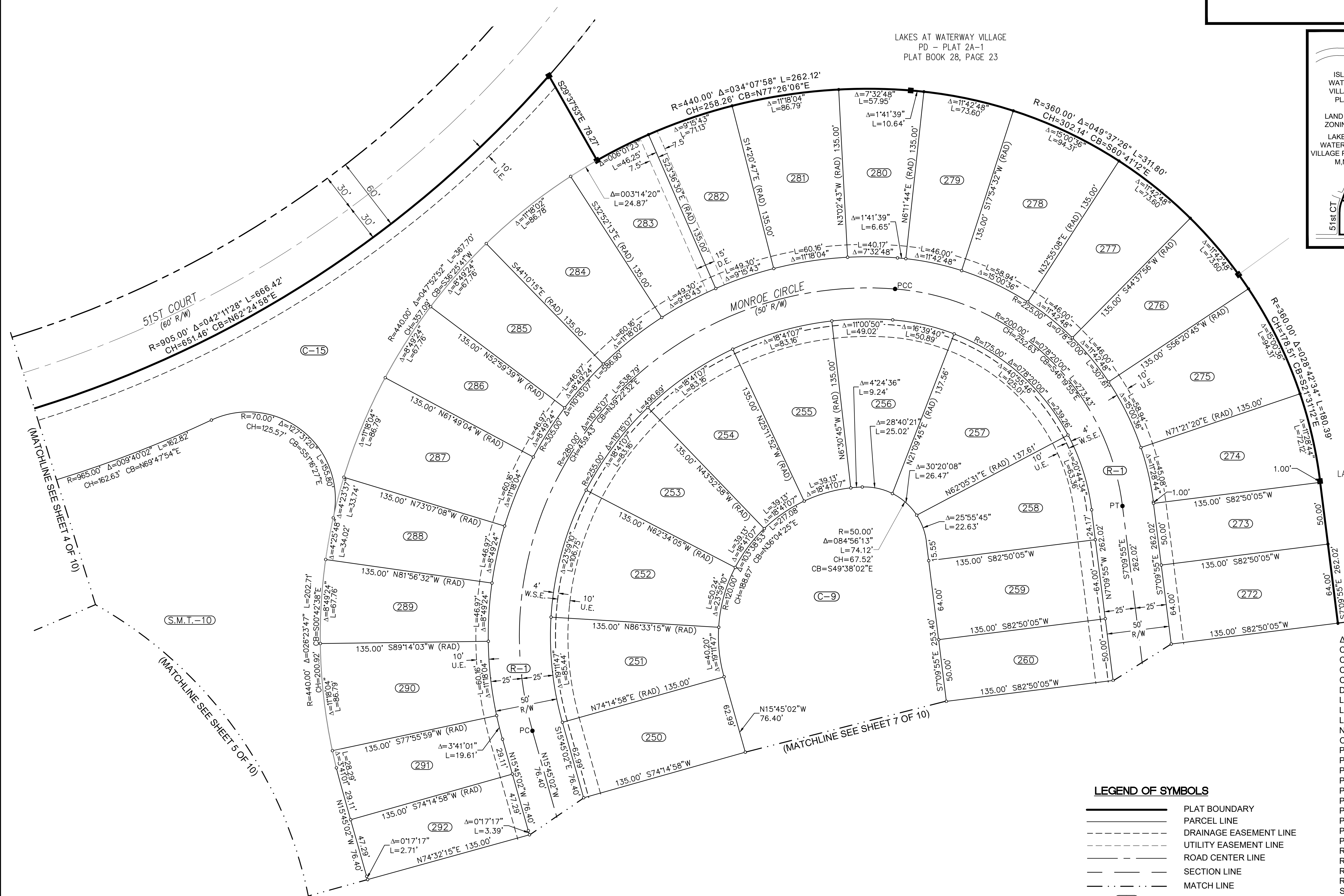


LAKES AT WATERWAY VILLAGE  
 PD - PLAT 2A-2  
 PLAT BOOK 28, PAGE 74

ABBREVIATIONS	
Δ	DELTA (CENTRAL ANGLE)
CB	CHORD BEARING
CCR	CERTIFIED CORNER RECORD
CD	CHORD DISTANCE
CMD	CONCRETE MONUMENT AND DISK
D.E.	DRAINAGE EASEMENT
L	ARC LENGTH
L.A.E.	LIMITED ACCESS EASEMENT
LB	LICENSED BUSINESS
N.R.	NON-RADIAL
ORB	OFFICIAL RECORDS BOOK
P.B.	PLAT BOOK
PC	POINT OF CURVATURE
PCC	POINT OF COMPOUND CURVATURE
PRC	POINT OF REVERSE CURVATURE
PCP	PERMANENT CONTROL POINT
PG.	PAGE
PI	POINT OF INTERSECTION
P.O.B.	POINT OF BEGINNING
PRM	PERMANENT REFERENCE MONUMENT
PT	POINT OF TANGENCY
R	RADIUS
RAD.	RADIAL
RGE	RANGE
R/W	RIGHT-OF-WAY
SEC	SECTION
TWP	TOWNSHIP
IRC	IRON ROD WITH CAP
EL =	ELEVATION
NAVD 88'	NORTH AMERICAN VERTICAL DATUM OF 1988
U.E.	UTILITY EASEMENT
W.S.E.	WATER AND SEWER EASEMENT
W.M.E.	WATER MANAGEMENT EASEMENT
S.M.T.	STORMWATER MANAGEMENT TRACT

### LEGEND OF SYMBOLS

	PLAT BOUNDARY
	PARCEL LINE
	DRAINAGE EASEMENT LINE
	UTILITY EASEMENT LINE
	ROAD CENTER LINE
	SECTION LINE
	MATCH LINE
	LOT NUMBER / TRACT NUMBER
	PRM, 4x4 CMD OR IRC STAMPED "PRM KHA LB 696" OR AS NOTED
	PCP, NAIL AND DISC STAMPED "PCP KHA LB 696"
	LOT CORNER



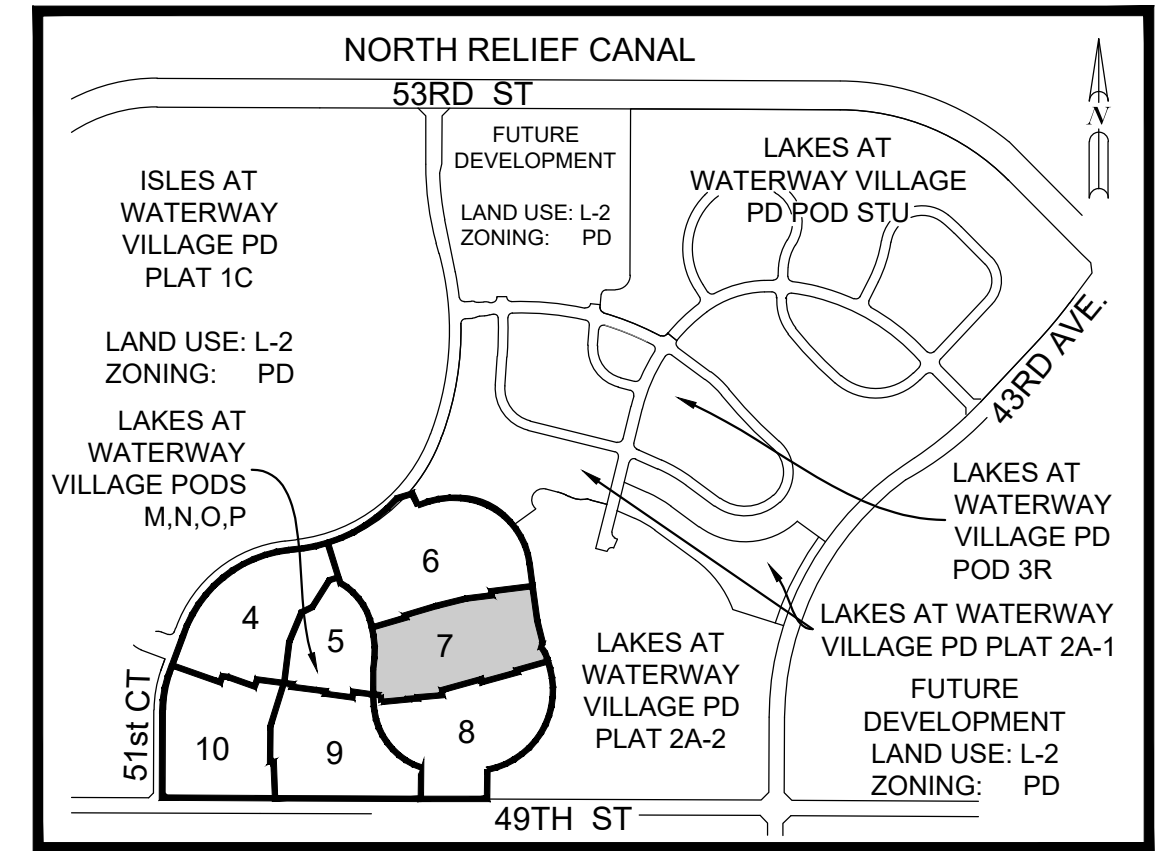
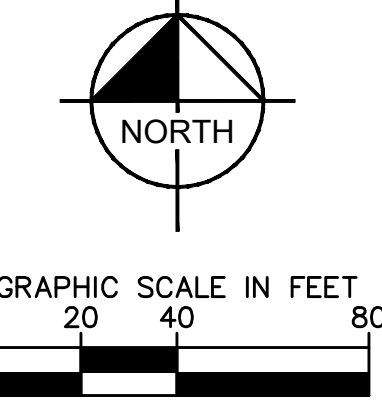
THIS INSTRUMENT WAS PREPARED BY:  
 E.C. DEMETER P.S.M. 5179, STATE OF FLORIDA  
**KIMLEY-HORN AND ASSOCIATES, INC**  
 445 24TH STREET, SUITE 200  
 VERO BEACH, FLORIDA 32960  
 LB 696  
 ON SEPTEMBER 11, 2018



# LAKES AT WATERWAY VILLAGE PD - PODS M,N,O,P

BEING A REPLAT OF A PORTION OF TRACTS 1, 2, 3, 6, 7 AND 8, SECTION 21, TOWNSHIP 32 SOUTH, RANGE 39 EAST, INDIAN RIVER FARMS CO. PLAT OF LANDS AND PLAN FOR LAND DRAINAGE AND ROAD RESERVATIONS, ACCORDING TO THE PLAT THEREOF, AS RECORDED IN PLAT BOOK 2, PAGE 25, PUBLIC RECORDS OF ST. LUCIE COUNTY, FLORIDA, NOW BEING IN INDIAN RIVER COUNTY, FLORIDA

PLAT BOOK \_\_\_\_\_  
 PAGE \_\_\_\_\_  
 CFN \_\_\_\_\_  
 CLERK'S FILE NUMBER \_\_\_\_\_



KEY MAP  
N.T.S.

- LEGEND OF SYMBOLS**
- PLAT BOUNDARY
  - PARCEL LINE
  - DRAINAGE EASEMENT LINE
  - UTILITY EASEMENT LINE
  - ROAD CENTER LINE
  - SECTION LINE
  - MATCH LINE
  - LOT NUMBER / TRACT NUMBER
  - PRM, 4x4 CMD OR IRC STAMPED "PRM KHA LB 696" OR AS NOTED
  - PCP, NAIL AND DISC STAMPED "PCP KHA LB 696"
  - LOT CORNER

- ABBREVIATIONS**
- Δ DELTA (CENTRAL ANGLE)
  - CB CHORD BEARING
  - CCR CERTIFIED CORNER RECORD
  - CD CHORD DISTANCE
  - CMD CONCRETE MONUMENT AND DISK
  - D.E. DRAINAGE EASEMENT
  - L ARC LENGTH
  - L.A.E. LIMITED ACCESS EASEMENT
  - LB LICENSED BUSINESS
  - N.R. NON-RADIAL
  - ORB OFFICIAL RECORDS BOOK
  - P.B. PLAT BOOK
  - PC POINT OF CURVATURE
  - PCC POINT OF COMPOUND CURVATURE
  - PRC POINT OF REVERSE CURVATURE
  - PCP PERMANENT CONTROL POINT
  - PG. PAGE
  - PI POINT OF INTERSECTION
  - P.O.B. POINT OF BEGINNING
  - PRM PERMANENT REFERENCE MONUMENT
  - PT POINT OF TANGENCY
  - R RADIUS
  - RAD. RADIAL
  - RGE RANGE
  - R/W RIGHT-OF-WAY
  - SEC SECTION
  - TWP TOWNSHIP
  - IRC IRON ROD WITH CAP
  - EL. ELEVATION
  - NAVD 88' NORTH AMERICAN VERTICAL DATUM OF 1988
  - U.E. UTILITY EASEMENT
  - W.S.E. WATER AND SEWER EASEMENT
  - W.M.E. WATER MANAGEMENT EASEMENT
  - S.M.T. STORMWATER MANAGEMENT TRACT

**CURVE TABLE**

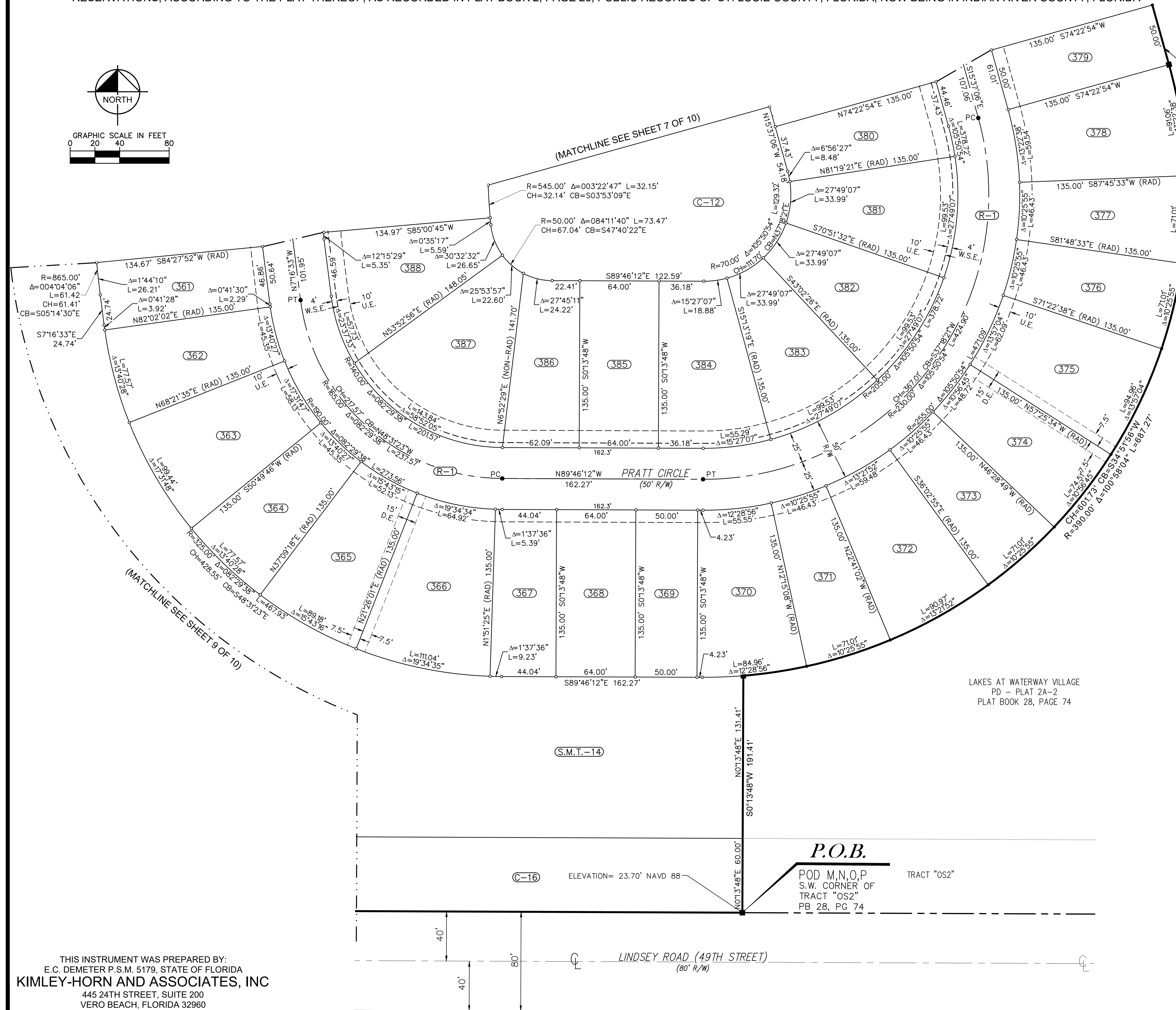
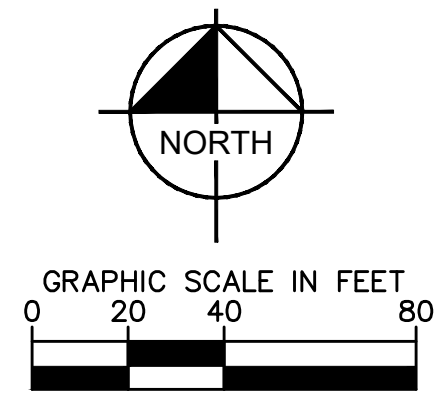
CURVE	RADIUS	LENGTH	CHORD BEARING	CHORD	DELTA	TANGENT
C25	25.00'	36.54'	N47°05'50"E	33.37'	83°44'47"	22.41'
C26	25.00'	46.08'	S47°34'34"E	39.83'	105°36'02"	32.94'
C27	25.00'	36.56'	S49°09'54"E	33.38'	83°46'40"	22.42'
C28	25.00'	33.23'	N43°03'37"E	30.84'	76°09'23"	19.59'
C29	25.00'	36.19'	N25°51'14"E	33.11'	82°56'39"	22.10'
C30	25.00'	45.55'	S67°48'41"E	39.50'	104°23'09"	32.22'
C31	25.00'	41.97'	S63°42'58"E	37.21'	96°11'44"	27.86'
C32	25.00'	33.77'	N23°04'39"E	31.26'	77°23'29"	20.03'

THIS INSTRUMENT WAS PREPARED BY:  
 E.C. DEMETER P.S.M. 5179, STATE OF FLORIDA  
**KIMLEY-HORN AND ASSOCIATES, INC**  
 445 24TH STREET, SUITE 200  
 VERO BEACH, FLORIDA 32960  
 LB 696  
 ON SEPTEMBER 11, 2018

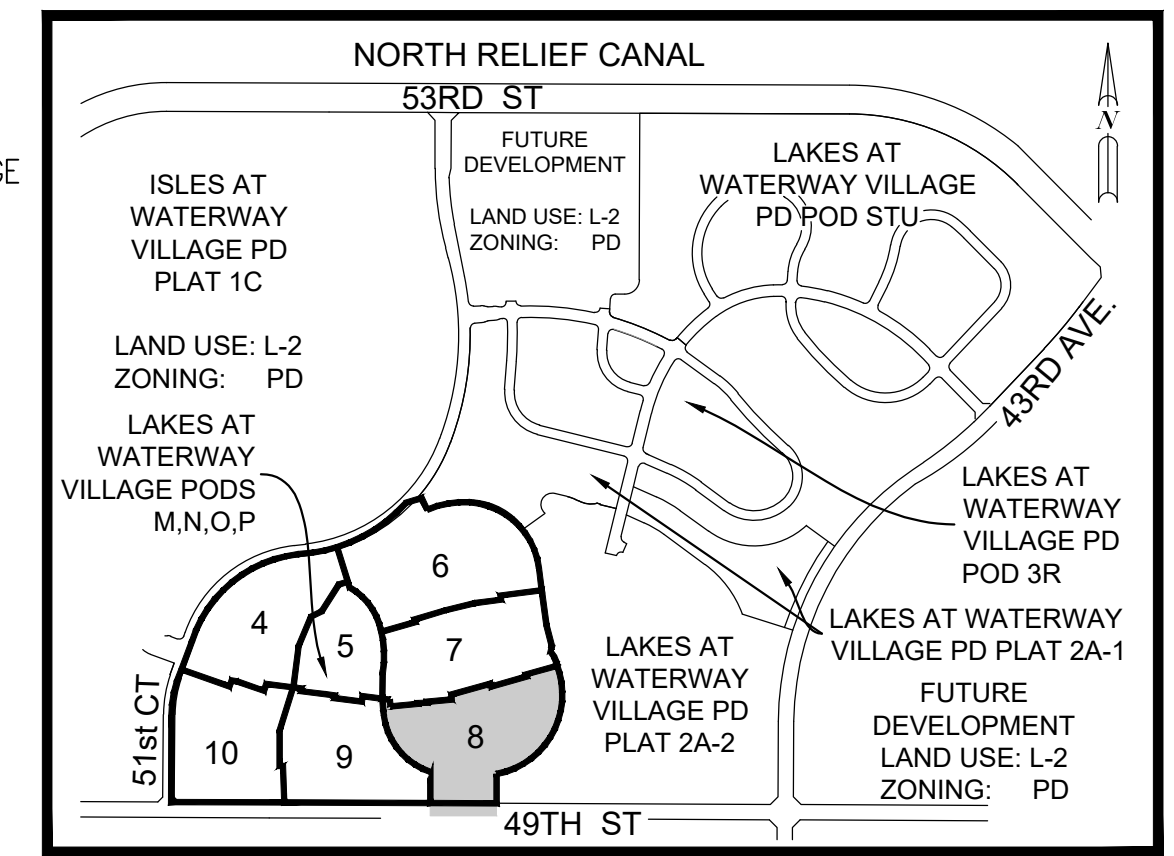
# LAKES AT WATERWAY VILLAGE PD - PODS M,N,O,P

BEING A REPLAT OF A PORTION OF TRACTS 1, 2, 3, 6, 7 AND 8, SECTION 21, TOWNSHIP 32 SOUTH, RANGE 39 EAST, INDIAN RIVER FARMS CO. PLAT OF LANDS AND PLAN FOR LAND DRAINAGE AND ROAD RESERVATIONS, ACCORDING TO THE PLAT THEREOF, AS RECORDED IN PLAT BOOK 2, PAGE 25, PUBLIC RECORDS OF ST. LUCIE COUNTY, FLORIDA, NOW BEING IN INDIAN RIVER COUNTY, FLORIDA

PLAT BOOK \_\_\_\_\_  
 PAGE \_\_\_\_\_  
 CFN \_\_\_\_\_  
 CLERK'S FILE NUMBER \_\_\_\_\_



S15°37'06"E 67.15'  
 LAKES AT WATERWAY VILLAGE PD - PLAT 2A-2 PLAT BOOK 28, PAGE 74



- LEGEND OF SYMBOLS**
- PLAT BOUNDARY
  - PARCEL LINE
  - - - - DRAINAGE EASEMENT LINE
  - - - - UTILITY EASEMENT LINE
  - ROAD CENTER LINE
  - SECTION LINE
  - - - - MATCH LINE
  - ## LOT NUMBER / TRACT NUMBER
  - PRM. 4x4 CMD OR IRC STAMPED "PRM KHA LB 696" OR AS NOTED
  - PCP, NAIL AND DISC STAMPED "PCP KHA LB 696"
  - LOT CORNER

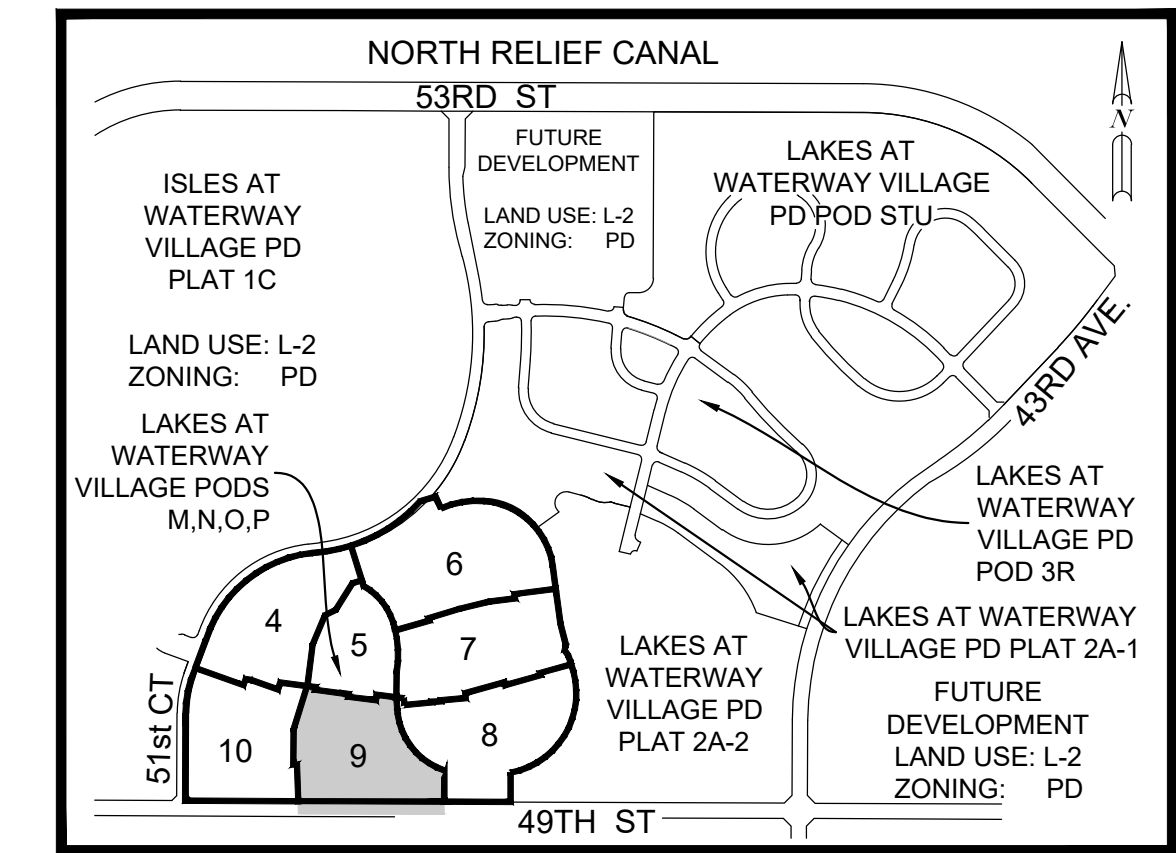
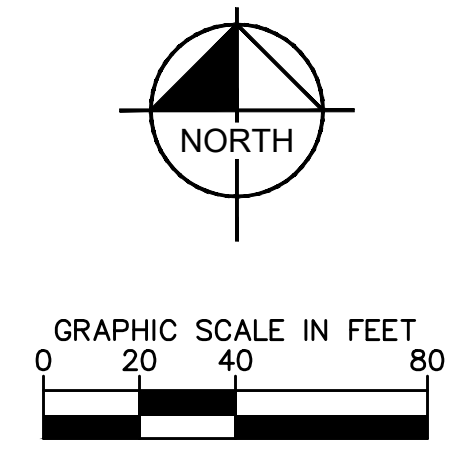
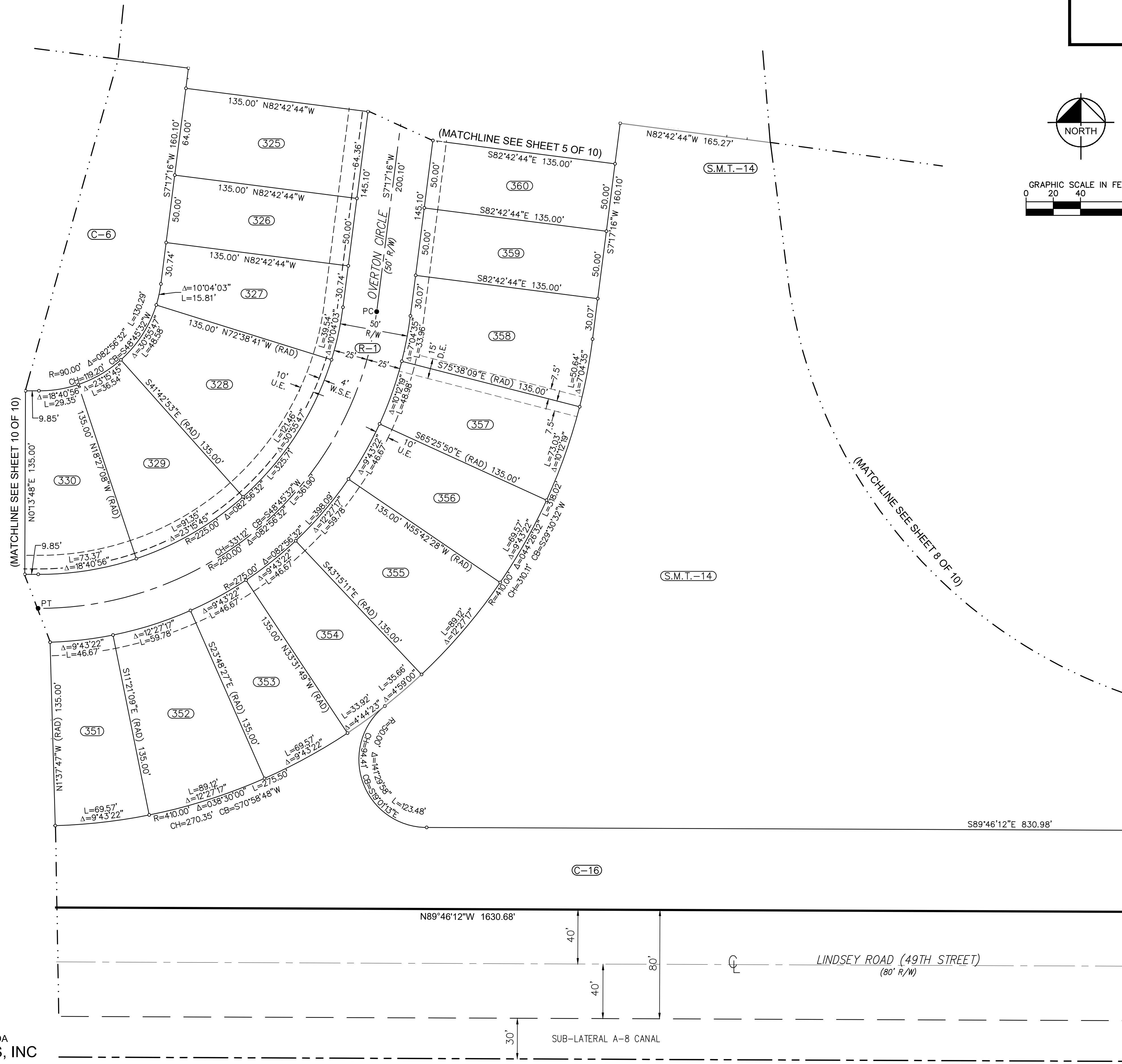
- ABBREVIATIONS**
- Δ DELTA (CENTRAL ANGLE)
  - CB CHORD BEARING
  - CCR CERTIFIED CORNER RECORD
  - CD CHORD DISTANCE
  - CMD CONCRETE MONUMENT AND DISK
  - D.E. DRAINAGE EASEMENT
  - L ARC LENGTH
  - L.A.E. LIMITED ACCESS EASEMENT
  - LB LICENSED BUSINESS
  - N.R. NON-RADIAL
  - ORB OFFICIAL RECORDS BOOK
  - P.B. PLAT BOOK
  - PC POINT OF CURVATURE
  - PCC POINT OF COMPOUND CURVATURE
  - PRC POINT OF REVERSE CURVATURE
  - PCP PERMANENT CONTROL POINT
  - PG. PAGE
  - PI POINT OF INTERSECTION
  - P.O.B. POINT OF BEGINNING
  - PRM PERMANENT REFERENCE MONUMENT
  - PT POINT OF TANGENCY
  - R RADIUS
  - RAD. RADIAL
  - RGE RANGE
  - R/W RIGHT-OF-WAY
  - SEC SECTION
  - TWP TOWNSHIP
  - IRC IRON ROD WITH CAP
  - EL. ELEVATION
  - NAVD 88' NORTH AMERICAN VERTICAL DATUM OF 1988
  - U.E. UTILITY EASEMENT
  - W.S.E. WATER AND SEWER EASEMENT
  - W.M.E. WATER MANAGEMENT EASEMENT
  - S.M.T. STORMWATER MANAGEMENT TRACT

THIS INSTRUMENT WAS PREPARED BY:  
 E.C. DEMETER P.S.M. 5179, STATE OF FLORIDA  
**KIMLEY-HORN AND ASSOCIATES, INC**  
 445 24TH STREET, SUITE 200  
 VERO BEACH, FLORIDA 32960  
 LB 696  
 ON SEPTEMBER 11, 2018

# LAKES AT WATERWAY VILLAGE PD - PODS M,N,O,P

BEING A REPLAT OF A PORTION OF TRACTS 1, 2, 3, 6, 7 AND 8, SECTION 21, TOWNSHIP 32 SOUTH, RANGE 39 EAST, INDIAN RIVER FARMS CO. PLAT OF LANDS AND PLAN FOR LAND DRAINAGE AND ROAD RESERVATIONS, ACCORDING TO THE PLAT THEREOF, AS RECORDED IN PLAT BOOK 2, PAGE 25, PUBLIC RECORDS OF ST. LUCIE COUNTY, FLORIDA, NOW BEING IN INDIAN RIVER COUNTY, FLORIDA

PLAT BOOK \_\_\_\_\_  
 PAGE \_\_\_\_\_  
 CFN \_\_\_\_\_  
 CLERK'S FILE NUMBER \_\_\_\_\_



KEY MAP  
N.T.S.

LEGEND OF SYMBOLS

- PLAT BOUNDARY
- PARCEL LINE
- DRAINAGE EASEMENT LINE
- UTILITY EASEMENT LINE
- ROAD CENTER LINE
- SECTION LINE
- MATCH LINE
- ## LOT NUMBER / TRACT NUMBER
- PRM, 4x4 CMD OR IRC STAMPED "PRM KHA LB 696" OR AS NOTED
- PCP, NAIL AND DISC STAMPED "PCP KHA LB 696"
- LOT CORNER

ABBREVIATIONS

- Δ DELTA (CENTRAL ANGLE)
- CB CHORD BEARING
- CCR CERTIFIED CORNER RECORD
- CD CHORD DISTANCE
- CMD CONCRETE MONUMENT AND DISK
- D.E. DRAINAGE EASEMENT
- L ARC LENGTH
- L.A.E. LIMITED ACCESS EASEMENT
- LB LICENSED BUSINESS
- N.R. NON-RADIAL
- ORB OFFICIAL RECORDS BOOK
- P.B. PLAT BOOK
- PC POINT OF CURVATURE
- PCC POINT OF COMPOUND CURVATURE
- PRC POINT OF REVERSE CURVATURE
- PCP PERMANENT CONTROL POINT
- PG. PAGE
- PI POINT OF INTERSECTION
- P.O.B. POINT OF BEGINNING
- PRM PERMANENT REFERENCE MONUMENT
- PT POINT OF TANGENCY
- R RADIUS
- RAD. RADIAL
- RGE RANGE
- R/W RIGHT-OF-WAY
- SEC SECTION
- TWP TOWNSHIP
- IRC IRON ROD WITH CAP
- EL.= ELEVATION
- NAVD 88' NORTH AMERICAN VERTICAL DATUM OF 1988
- U.E. UTILITY EASEMENT
- W.S.E. WATER AND SEWER EASEMENT
- W.M.E. WATER MANAGEMENT EASEMENT
- S.M.T. STORMWATER MANAGEMENT TRACT

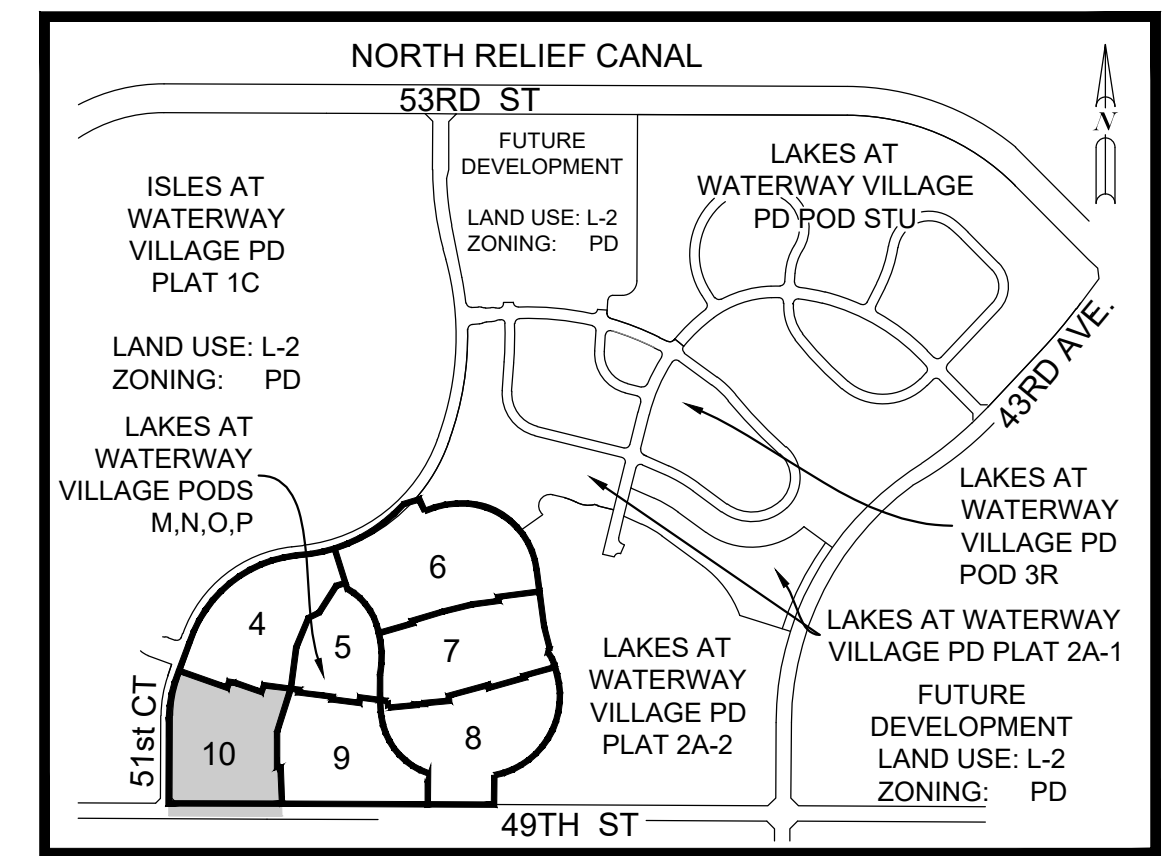
THIS INSTRUMENT WAS PREPARED BY:  
 E.C. DEMETER P.S.M. 5179, STATE OF FLORIDA  
**KIMLEY-HORN AND ASSOCIATES, INC**  
 445 24TH STREET, SUITE 200  
 VERO BEACH, FLORIDA 32960  
 LB 696  
 ON SEPTEMBER 11, 2018



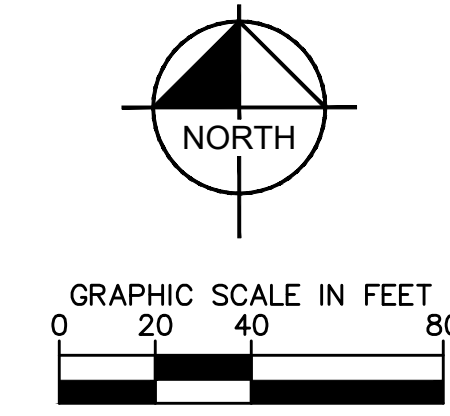
# LAKES AT WATERWAY VILLAGE PD - PODS M,N,O,P

BEING A REPLAT OF A PORTION OF TRACTS 1, 2, 3, 6, 7 AND 8, SECTION 21, TOWNSHIP 32 SOUTH, RANGE 39 EAST, INDIAN RIVER FARMS CO. PLAT OF LANDS AND PLAN FOR LAND DRAINAGE AND ROAD RESERVATIONS, ACCORDING TO THE PLAT THEREOF, AS RECORDED IN PLAT BOOK 2, PAGE 25, PUBLIC RECORDS OF ST. LUCIE COUNTY, FLORIDA, NOW BEING IN INDIAN RIVER COUNTY, FLORIDA

PLAT BOOK \_\_\_\_\_  
 PAGE \_\_\_\_\_  
 CFN \_\_\_\_\_  
 CLERK'S FILE NUMBER \_\_\_\_\_



KEY MAP  
N.T.S.

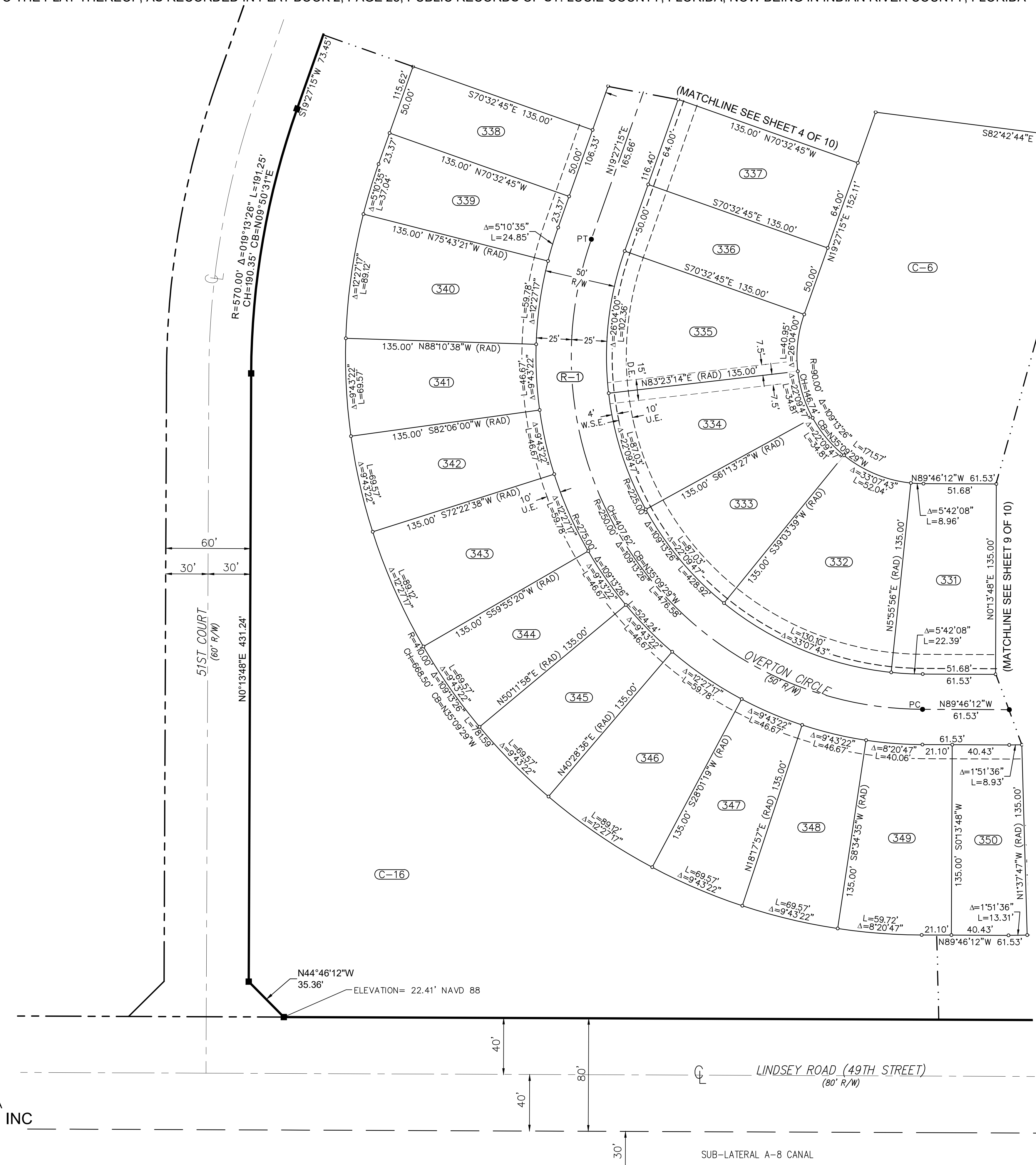


**LEGEND OF SYMBOLS**

- PLAT BOUNDARY
- PARCEL LINE
- DRAINAGE EASEMENT LINE
- UTILITY EASEMENT LINE
- ROAD CENTER LINE
- SECTION LINE
- MATCH LINE
- LOT NUMBER / TRACT NUMBER
- PRM, 4x4 CMD OR IRC STAMPED  
"PRM KHA LB 696" OR AS NOTED
- PCP, NAIL AND DISC STAMPED  
"PCP KHA LB 696"
- LOT CORNER

**ABBREVIATIONS**

- Δ DELTA (CENTRAL ANGLE)
- CB CHORD BEARING
- CCR CERTIFIED CORNER RECORD
- CD CHORD DISTANCE
- CMD CONCRETE MONUMENT AND DISK
- D.E. DRAINAGE EASEMENT
- L ARC LENGTH
- L.A.E. LIMITED ACCESS EASEMENT
- LB LICENSED BUSINESS
- N.R. NON-RADIAL
- ORB OFFICIAL RECORDS BOOK
- P.B. PLAT BOOK
- PC POINT OF CURVATURE
- PCC POINT OF COMPOUND CURVATURE
- PRC POINT OF REVERSE CURVATURE
- PCP PERMANENT CONTROL POINT
- PG. PAGE
- PI POINT OF INTERSECTION
- P.O.B. POINT OF BEGINNING
- PRM PERMANENT REFERENCE MONUMENT
- PT POINT OF TANGENCY
- R RADIUS
- RAD. RADIAL
- RGE RANGE
- R/W RIGHT-OF-WAY
- SEC SECTION
- TWP TOWNSHIP
- IRC IRON ROD WITH CAP
- EL= ELEVATION
- NAVD 88' NORTH AMERICAN VERTICAL DATUM OF 1988
- U.E. UTILITY EASEMENT
- W.S.E. WATER AND SEWER EASEMENT
- W.M.E. WATER MANAGEMENT EASEMENT
- S.M.T. STORMWATER MANAGEMENT TRACT



THIS INSTRUMENT WAS PREPARED BY:  
 E.C. DEMETER P.S.M. 5179, STATE OF FLORIDA  
**KIMLEY-HORN AND ASSOCIATES, INC**  
 445 24TH STREET, SUITE 200  
 VERO BEACH, FLORIDA 32960  
 LB 696  
 ON SEPTEMBER 11, 2018