

AMENDMENT 1 TO WORK ORDER 8

Groundwater Compliance Technical Support Services

This Amendment 1 to Work Order Number 8 is entered into as of this 17th day of August, 2021, pursuant to that certain Continuing Contract Agreement, dated April 17, 2018, renewed and amended as of May 18, 2021 (collectively referred to as the "Agreement"), by and between INDIAN RIVER COUNTY, a political subdivision of the State of Florida ("COUNTY") and Geosyntec Consultants, Inc. ("Consultant").

1. The COUNTY has selected the Consultant to perform the professional services set forth in existing Work Order Number 8, Effective Date 10/13/2020.
2. The COUNTY and the Consultant desire to amend this Work Order as set forth on Exhibit A (Scope of Work) attached to this Amendment and made part hereof by this reference. The professional services will be performed by the Consultant for the fee schedule set forth in Exhibit B (Fee Schedule), and within the time-frame more particularly set forth in Exhibit C (Time Schedule), all in accordance with the terms and provisions set forth in the Agreement.
3. From and after the Effective Date of this Amendment, the above-referenced Work Order is amended as set forth in this Amendment. Pursuant to paragraph 1.4 of the Agreement, nothing contained in any Work Order shall conflict with the terms of the Agreement and the terms of the Agreement shall be deemed to be incorporated in each individual Work Order as if fully set forth herein.

IN WITNESS WHEREOF, the parties hereto have executed this Work Order as of the date first written above.

CONSULTANT:

**BOARD OF COUNTY COMMISSIONERS
OF INDIAN RIVER COUNTY**

By: _____

By: _____

Print Name: Jim Langenbach, PE

Joseph E. Flescher, Chairman

Title: Vice-President

BCC Approved Date: _____

Attest: Jeffrey R. Smith, Clerk of Court and Comptroller

By: _____

Deputy Clerk

Approved: _____

Jason E. Brown, County Administrator

Approved as to form and legal sufficiency: _____

Dylan T. Reingold, County Attorney

EXHIBIT A

PROFESSIONAL SERVICES

3 August 2021

Mr. Himanshu H. Mehta, P.E.
Managing Director
Solid Waste Disposal District
Indian River County
1325 74th Avenue SW
Vero Beach, Florida 32968

**Subject: Proposal to Provide Groundwater Compliance Technical Support Services
C&D Debris Disposal Facility
Indian River County Landfill Facility
Vero Beach, Indian River County, Florida**

Dear Mr. Mehta:

Geosyntec Consultants, Inc. (Geosyntec) is pleased to submit this letter proposal to the Indian River County (IRC) Solid Waste Disposal District (SWDD) to provide professional services supporting the operation of the Construction and Demolition (C&D) debris disposal facility at the IRC Landfill (IRCL) site located in Vero Beach, Indian River County, Florida (Site). The proposal presents the scope of work, schedule, and budget estimate for the technical support services relating to groundwater compliance at the C&D debris disposal facility. The proposal was prepared in response to a verbal request from Mr. Himanshu Mehta, P.E., Managing Director of SWDD, during a 11 June 2021 teleconference.

Geosyntec has prepared this proposal (professional services as Exhibit A of Amendment 1 to Work Order No. 8, pursuant to that certain Continuing Contract Agreement, dated April 17, 2018, renewed and amended as of May 18, 2021 (collectively referred to as the “Agreement”), by and between INDIAN RIVER COUNTY, a political subdivision of the State of Florida (“COUNTY”) and Geosyntec (“Consultant”).

The remainder of this proposal presents: (i) project background; (ii) proposed scope of services; (iii) schedule; and (iv) budget estimate.

PROJECT BACKGROUND

The IRCL site is located south of Oslo Road, west of Range Line Road (74th Avenue) and east of Interstate 95 in Section 25, Township 33 South, Range 38 East in Indian River County, Florida. The IRCL site occupies 276 acres, with approximately 141.5 acres permitted for Class I disposal,

19 acres is comprised of Cell 1 C&D debris disposal facility, and 2.5 acres consists of a C&D debris recycling facility.

The Class I landfill currently accepts both Class I waste and C&D debris for disposal under the Florida Department of Environmental Protection (FDEP) Construction and Operation Permit with permit numbers 0128769-022-SC and 0128769-023-SO and the subsequent modifications issued to this permit by the FDEP through December 16, 2020 (Class I Permit). The C&D debris disposal facility operates under FDEP Permit No. 0128769-025-SO-24, dated July 13, 2017 (C&D Permit).

The Water Quality Monitoring Plan (WQMP) for each of the IRCL facility permits (which is listed as Appendix 3 of each permit) indicates that groundwater and surface water quality monitoring are required. Semi-annual sampling of the Class I landfill and C&D debris disposal facility groundwater monitoring wells shall be conducted in January and July 2020. The samples collected from the Class I landfill and C&D debris disposal facility monitoring wells shall be analyzed for the routine monitoring parameters listed in Section II.3 (Class I Permit) and Paragraph 8 (C&D Permit) of the WQMP, respectively, as required by paragraphs 62-701.510(5)(c) & (7)(a) and 62-701.730(8)(d), Florida Administrative Code (F.A.C.). Samples from one surface water monitoring site (SW-2) shall be collected semi-annually in January and July, if water is discharging from the stormwater pond. The surface water samples, if collected, shall be analyzed for the list of parameters listed in Section III.2 of the Class I Landfill WQMP, as required by paragraphs 62-701.510 (5)(d) and (7)(b), F.A.C.

Water Quality Compliance Monitoring for the C&D Debris Disposal Facility

Results of routine sampling of C&D debris disposal facility groundwater monitoring well (MW-21S) in January 2017 indicated exceedances of benzene and sodium groundwater cleanup target levels (GCTLs). As a result, SWDD was requested by FDEP to initiate evaluation monitoring in accordance with subsection 62-701.510(6), F.A.C. Pursuant to this request SWDD installed one groundwater monitoring well (MW-49S) in July 2017, and subsequently other wells (MW-33S, MW-40S, MW-50S, MW-51S, and MW-52S) in May 2019. These wells (MW-21S, MW-33S, MW-35S, MW-40S, MW-49S, MW-50S, MW-51S, and MW-52S) and three surface water (SW) Lateral Canal (LC) sample sites (SW-LC1, SW-LC2, and SW-LC3) have been sampled quarterly from July 2017 to October 2019 under an evaluation monitoring program with FDEP. However, in correspondence from FDEP to SWDD dated 14 October 2019, the FDEP approved SWDD's request to replace the evaluation monitoring of the eight groundwater wells and three surface water sample sites with quarterly assessment monitoring and with the addition of other parameters (arsenic, benzene, naphthalene, and other semi-volatile organic compounds [VOCs]) to the suite of parameters to be analyzed for at these wells. The FDEP also requested NCP2020-3158/[JL21057_GW Compliance Technical Support Services.doc](#)

establishing background water quality for seven (7) additional surface water sampling sites (LC4-SW to LC10-SW) along the Lateral C Canal. SWDD sampled and analyzed water-quality for these surface water sites in the January and April 2020 quarterly water-quality assessment events. Following, the April 2020 quarterly sampling event, FDEP approved (via e-mail on 17 July 2020) SWDD's request to limit the monitoring of the surface water sites to SW-LC1, SW-LC2, SW-LC3 and SW-LC4.

Results of the quarterly sampling downgradient of the C&D debris disposal facility have indicated persistent detections of ammonia, arsenic, sodium, iron, total dissolved solids (TDS), total nitrogen (TN) and total phosphorus (TP) in groundwater and persistent detections of ammonia, sodium, iron, TDS, TN and TP in surface water sampling locations in the Lateral C Canal adjacent to the evaluation groundwater monitoring locations. Geosyntec completed a site visit on 21 July 2020 and prepared a 10 August 2020 memorandum to SWDD. One of the objectives of the site visit was to visually observe the Site conditions on the east side of the C&D debris disposal facility and the Residuals Dewatering Facility (RDF) relative to the current monitoring wells and surface water monitoring locations. A stormwater management ditch located between the C&D debris disposal facility and the RDF is suspected to be a potential source area for the persistent detections.

A supplemental groundwater assessment was completed in this area in late 2020 to identify the lateral and vertical extent of the groundwater impacts. Results of the assessment, as indicated in the "*Draft Supplemental Groundwater Assessment Report, C&D Debris Disposal Facility*" (hereafter referred to as Draft Supplemental Report) dated July 2021, indicated groundwater impacts downgradient of the C&D debris disposal facility and the RDF. The Draft Supplemental Report recommended additional assessment of the RDF area including historical compliance document review, stormwater system as-built documents review, groundwater sampling and sediment sampling. The remainder of this proposal provides additional detail on the proposed assessment activities.

PROPOSED SCOPE OF SERVICES

The proposed scope of services includes activities to be performed on behalf of SWDD for the additional assessment at the RDF and C&D Facility. For the purpose of budgeting, the scope of work has been divided into the following four (4) main phases:

- Phase 1 – General Consulting/Meeting Support/Project Management;
- Phase 2 – Historical and As-Built Documents Review;
- Phase 3 – RDF and C&D Debris Disposal Facility Additional Assessment; and

- Phase 4 – Data Evaluation and Summary Report.

The remainder of this section presents a general description of the activities to be performed in each phase.

Phase 1 – General Consulting/Meeting Support/Project Management

Under this phase, Geosyntec will perform project planning and management responsibilities, such as correspondence with SWDD and FDEP, invoice review, project coordination, prepare a site-specific Health and Safety Plan, preparation of a work plan for FDEP approval for the tasks outlined in this proposal and project administration. The work plan for the tasks outlined in this proposal will be incorporated into the Draft Supplemental Report prior to submittal to the FDEP for approval. Geosyntec has also included budget for preparation and attendance (by three Geosyntec personnel) at one meeting with SWDD and/or FDEP, as needed.

Phase 2 – Historical and As-Built Documents Review

The dimensions of the groundwater impact on the downgradient edge of the RDF and the C&D debris disposal facility have been largely defined by the completed previous scope of work presented in the Draft Supplemental Report. However, the source of the groundwater impacts has not been fully assessed relative to potential RDF contribution. There is a potential that the source of the groundwater impacts is the stormwater management system to the south of the RDF. In order to resolve the source of the observed groundwater impacts, additional assessment activities are proposed as summarized below under Phases 2 and 3 and on the attached **Figure 1**.

Phase 2, Task 1 – Background Document Evaluation

Operation and compliance records relating to the RDF will be reviewed to identify if any releases have been reported. In addition, with permission from SWDD or IRC Utilities Department (IRCUD), Geosyntec will interview select workers at the RDF to gain better understanding of daily operations including cleaning and flushing of incoming trucks.

Phase 2, Task 2 – Stormwater Infrastructure Record Review

As-built drawings for the RDF and C&D debris disposal facility stormwater management system will be reviewed to identify potential cross connections between the two in addition to verifying the overall drainage pattern (i.e., surface water flow direction) around the C&D debris disposal facility and RDF. A Site visit is included during this phase to inspect the stormwater

infrastructure and refine the understanding of the potential interconnection between the RDF and C&D debris disposal facility.

Phase 3 – RDF and C&D Debris Disposal Facility Additional Assessment

Phase 3, Task 1 – Expanded Groundwater Assessment

Five (5) additional groundwater screening locations (GSB-7 through GSB-11) are proposed along the stormwater management ditch north of the C&D debris disposal facility and south of the RDF to refine the understanding of the water quality distribution in this area. One (1) additional groundwater profiling location (GSB-12) is also proposed to the south of GSB-2 and GPZ-3 to laterally delineate the groundwater impacts to the south of the impacted area (**Figure 1**). The groundwater screening locations may be adjusted following the completion of Phase 2. Vertical groundwater profiling will be conducted on four-foot (4-ft) intervals between the water table and a maximum depth of 36 feet below land surface (ft bls). Groundwater screening will be completed by advancing a 4-ft stainless steel slotted screen and using direct push technology (DPT) methods. The focus of the groundwater screening will span from the water table to an approximate depth of 32 ft bls.

Groundwater will be purged from each 4-ft interval and screened with a water quality probe capable of monitoring temperature, pH, conductivity and oxidation reduction potential (ORP). Turbidity will also be monitored using a turbidimeter and ammonia will be monitored with a HACH field kit. Each groundwater screening interval will be purged at least 3 equipment volumes until stability of field parameters is achieved per FDEP Standard Operating Procedures (SOPs) or a maximum purging period of 15 minutes. Each location will be abandoned with tremie applied cement grout slurry once groundwater screening is completed.

Phase 3, Task 2 – Stormwater Management Ditch Assessment

The depth and nature of the sediments within the perimeter stormwater management ditch to the south of the RDF which conveys stormwater to the south and adjacent to the eastern edge of the C&D debris disposal facility will be assessed. The assessment will include the completion of eight (8) muck probes (MP-1 to MP-8) using either DPT methods or hand auger to estimate the depth of the sediment and the collection of analytical samples to evaluate the levels of nutrients. The sampling locations are distributed around the perimeter stormwater ditch to assess the potential distribution of nutrient inputs. Composite samples of the muck will be collected from each of the locations and analyzed for nitrogen species (nitrite, nitrate, ammonia, Total Kjeldahl

Nitrogen [TKN] and TN) and phosphorus species (TP and orthophosphate). The muck analytical testing will be conducted by ENCO Laboratories (ENCO) of Orlando, Florida, the analytical laboratory contracted with, and direct billed to SWDD.

The work plan for the tasks outlined in this proposal will be incorporated into the Draft Supplemental Report prior to submittal to the FDEP for approval. Geosyntec will request FDEP approve the scope of work prior to initiating the scope of work detailed in this Task.

Geosyntec assumes the areas where the groundwater screening is planned will be cleared by SWDD and SWDD will provide assurance that the drilling areas are clear of subsurface utilities; otherwise, a subsurface utility survey will be performed prior to initiating work.

Phase 4 – Data Evaluation and Summary Report

Following completion of Phases 2 and 3, Geosyntec will review the data and prepare a summary report. This report will be prepared as an Addendum to the Draft Supplemental Report and a draft copy will be submitted to SWDD for review and comment. Following receipt of SWDD comments this Addendum and the Draft Supplemental Report will be finalized for submittal to FDEP.

SCHEDULE

Geosyntec will initiate work immediately upon receipt of Notice to Proceed (NTP) from SWDD. A Draft version of the Draft Supplemental Report will be submitted to SWDD within 30 days of receipt of laboratory analytical data. The scope of work detailed in this proposal is expected to be completed within 4 months of authorization. Other technical and miscellaneous permit compliance support services will be provided on an as-needed basis.

BUDGET ESTIMATE

Geosyntec proposes to perform the above-referenced work on a lump sum basis for \$66,159.85. A budget estimate for the scope of work outlined in Phases 1 through 4 of this proposal is summarized in the following table, and a detailed budget estimate is provided as Attachment 1. The budget estimate presented in this proposal is based on Geosyntec's understanding of the project requirements, our experience gained from executing similar tasks for SWDD and experience with compliance monitoring and reporting at similar facilities.

Phase 1 – Project Management/Meetings	\$9,547.22
Phase 2 – Historical and As-Built Documents Review	\$12,945.10

Phase 3 – RDF and C&D Debris Disposal Facility Additional Assessment	\$24,397.25
Phase 4 – Data Evaluation and Summary Report	\$19,270.28
TOTAL	\$66,159.85

Geosyntec will invoice SWDD each month of the project on a lump sum, percent complete basis in accordance with our Agreement. Additional services or any significant change in the scope of work will be performed using the Rate Schedule included in our Agreement. Geosyntec will not exceed the budget estimate without prior approval and written authorization from SWDD.

CLOSURE

Geosyntec appreciates this opportunity to offer our services. If this proposal is acceptable, please indicate your agreement by signing the attached work authorization, which references this proposal. Please return one signed work authorization to Dr. Badu-Tweneboah's attention. Please call either of the undersigned with questions you may have as you review this proposal.

Sincerely,



Matt Wissler, P.G.
Senior Principal Hydrogeologist



Kwasi Badu-Tweneboah, Ph.D., P.E.
Principal Engineer

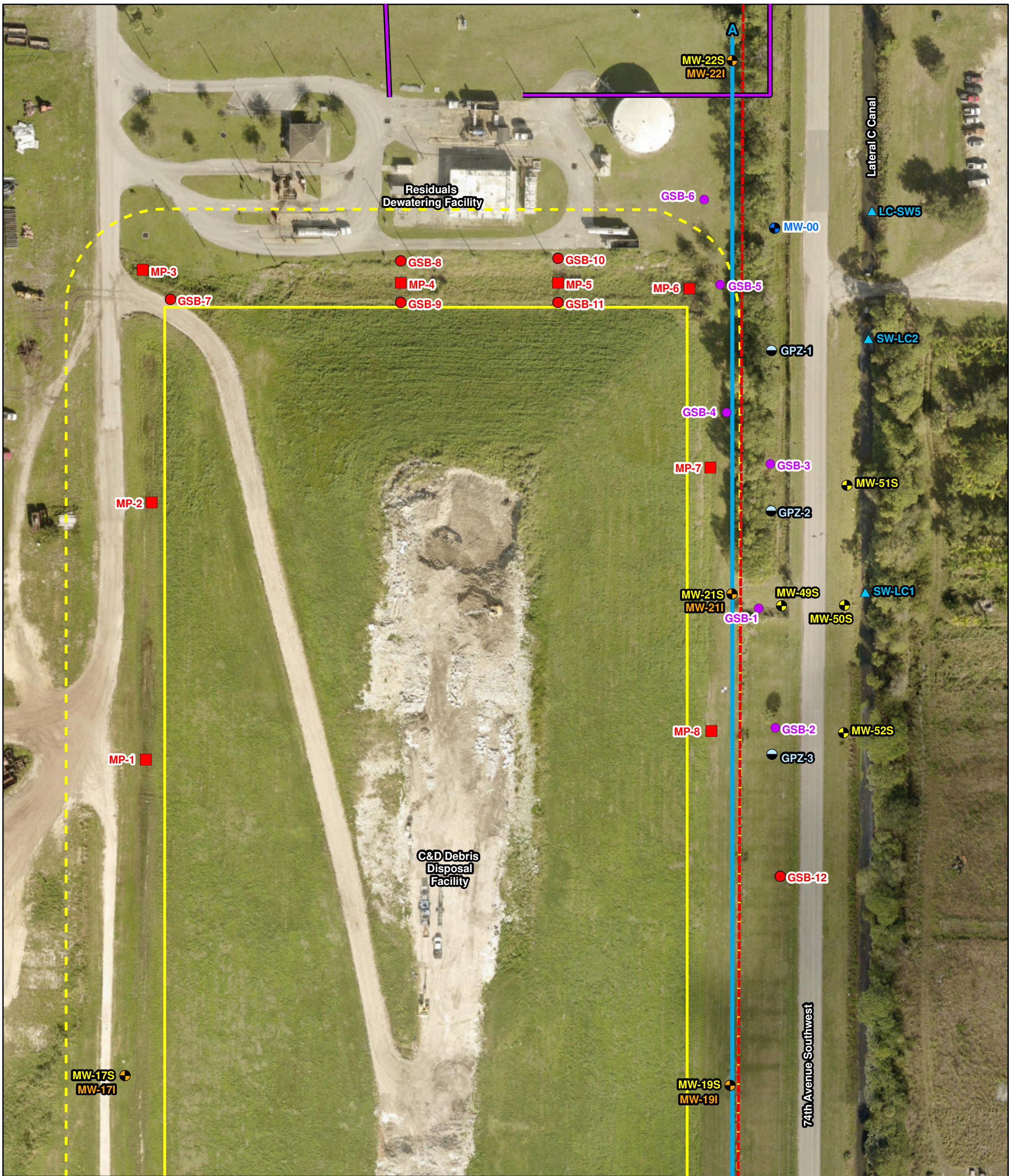


Richard Tedder, P.E.
Senior Consultant

Attachments

FIGURE 1

**PROPOSED ADDITIONAL
INVESTIGATION LOCATIONS**



Legend

- Proposed Groundwater Screening Location (GSB)
- Proposed Muck Probe and Sediment Sampling Location
- ⊕ Shallow Monitoring Well Location
- ⊕ 10-ft Groundwater Monitoring Well Location (no well identification or construction details available)
- ⊕ Intermediate Monitoring Well Location
- ⊖ Piezometer installed by Geosyntec 2 December 2020 (screened 15 to 30 ft BLS)
- ▲ Surface Water Sample Location
- Geosyntec Soil Boring - November/December 2020 (Soil and/or Groundwater Sampling Location)
- Cross Section Transect A to A'
- Approximate Location of Force Main
- - - Approximate Indian River County Landfill Property Boundary
- ⬜ Approximate Waste Limits of Construction and Demolition (C&D) Debris Disposal Facility
- - - Zone of Discharge of C&D Debris Disposal Facility

Notes:

1. ft BLS indicates feet below land surface.
2. Locations identified as GPZ-1 to 3, C5-SW1, C5-SW3, LC-SW5, and LC-SW6 were based on Peavey and Associates survey dated 4 January 2021. All other locations are estimated.
3. 2020 World Imagery Source: Esri, Maxar, GeoEye, Earthstar Geographics, CNES/Airbus DS, USDA, USGS, AeroGRID, IGN, and the GIS User Community.

0 100 Feet

Proposed Additional Investigation Locations

Indian River County Landfill
Vero Beach, Florida

Geosyntec
consultants

Project No. FL3738 July 2021

Figure
1

ATTACHMENT 1
BUDGET ESTIMATE

Table 1

**BUDGET ESTIMATE
GROUNDWATER COMPLIANCE TECHNICAL SUPPORT SERVICES
CLASS I LANDFILL AND C&D DEBRIS DISPOSAL FACILITY
INDIAN RIVER COUNTY, FLORIDA**

PHASE 01: General Consulting/Meeting Support/Project Management

ITEM	BASIS	RATE	QUANTITY	ESTIMATED COST
A. Professional Services				
a. Senior Principal	Hr	\$260	9	\$2,340.00
b. Principal	Hr	\$245	9	\$2,205.00
c. Senior Professional	Hr	\$225	0	\$0.00
d. Project Professional	Hr	\$203	15	\$3,045.00
e. Professional	Hr	\$176	0	\$0.00
f. Senior Staff Professional	Hr	\$154	4	\$616.00
g. Staff Professional	Hr	\$132	0	\$0.00
Subtotal Professional Services				\$8,206.00
B. Technical/Administrative Services				
a. Designer	Hr	\$143	0	\$0.00
b. Senior Drafter/Senior CADD Operator	Hr	\$126	0	\$0.00
c. Project Administrator	Hr	\$71	8	\$568.00
d. Clerical	Hr	\$55	0	\$0.00
Subtotal Technical/Administrative Services				\$568.00
C. Reimbursables				
a. Lodging	Day	\$100	0	\$0.00
b. Per Diem	Day	\$55	0	\$0.00
c. Communications Fee	3% Labor	\$0.03	\$8,774	\$263.22
d. CADD Computer System	Hr	\$15	0	\$0.00
e. Vehicle Rental & Fuel	Day	\$150	3	\$450.00
f. 8"x11" Photocopies	Each	\$0.12	500	\$60.00
g. CADD Drawings	Each	\$3	0	\$0.00
Subtotal Reimbursables				\$773.22
TOTAL ESTIMATED BUDGET : PHASE 01				\$9,547.22

Table 2

**BUDGET ESTIMATE
GROUNDWATER COMPLIANCE TECHNICAL SUPPORT SERVICES
CLASS I LANDFILL AND C&D DEBRIS DISPOSAL FACILITY
INDIAN RIVER COUNTY, FLORIDA**

PHASE 02: HISTORICAL AND AS-BUILT DOCUMENTS REVIEW

ITEM	BASIS	RATE	QUANTITY	ESTIMATED COST
A. Professional Services				
a. Senior Principal	Hr	\$260	4	\$1,040.00
b. Principal	Hr	\$245	10	\$2,450.00
c. Senior Professional	Hr	\$225	0	\$0.00
d. Project Professional	Hr	\$203	16	\$3,248.00
e. Professional	Hr	\$176	0	\$0.00
f. Senior Staff Professional	Hr	\$154	32	\$4,928.00
g. Staff Professional	Hr	\$132	0	\$0.00
Subtotal Professional Services				\$11,666.00
B. Technical/Administrative Services				
a. Designer	Hr	\$143	0	\$0.00
b. Senior Drafter/Senior CADD Operator	Hr	\$126	4	\$504.00
c. Project Administrator	Hr	\$71	0	\$0.00
d. Clerical	Hr	\$55	0	\$0.00
Subtotal Technical/Administrative Services				\$504.00
C. Reimbursables				
a. Vehicle Rental & Fuel	Day	\$150	2	\$300.00
b. Communications Fee	3% Labor	\$0.03	\$12,170	\$365.10
c. Lodging	Day	\$100	0	\$0.00
d. Per Diem	Day	\$55	2	\$110.00
e. CADD Computer System	Hr	\$15	0	\$0.00
f. 8"x11" Photocopies	Each	\$0.12	0	\$0.00
g. CADD Drawings	Each	\$3	0	\$0.00
h. Subcontractor	LS	\$0	1.07	\$0.00
Subtotal Reimbursables				\$775.10
TOTAL ESTIMATED BUDGET : PHASE 03				\$12,945.10

Table 3

**BUDGET ESTIMATE
GROUNDWATER COMPLIANCE TECHNICAL SUPPORT SERVICES
CLASS I LANDFILL AND C&D DEBRIS DISPOSAL FACILITY
INDIAN RIVER COUNTY, FLORIDA**

PHASE 03: RDF and C&D DEBRIS DISPOSAL FACILITY ADDITIONAL ASSESSMENT

ITEM	BASIS	RATE	QUANTITY	ESTIMATED COST
A. Professional Services				
a. Senior Principal	Hr	\$260	3	\$780.00
b. Principal	Hr	\$245	3	\$735.00
c. Senior Professional	Hr	\$225	0	\$0.00
d. Project Professional	Hr	\$203	0	\$0.00
e. Professional	Hr	\$176	0	\$0.00
f. Senior Staff Professional	Hr	\$154	0	\$0.00
g. Staff Professional	Hr	\$132	80	\$10,560.00
Subtotal Professional Services				\$12,075.00
B. Technical/Administrative Services				
a. Designer	Hr	\$143	0	\$0.00
b. Senior Drafter/Senior CADD Operator	Hr	\$126	0	\$0.00
c. Project Administrator	Hr	\$71	0	\$0.00
d. Clerical	Hr	\$55	0	\$0.00
Subtotal Technical/Administrative Services				\$0.00
C. Reimbursables				
a. Vehicle Rental & Fuel	Day	\$150.00	8	\$1,200.00
b. Communications Fee	3% Labor	\$0.03	\$12,075	\$362.25
c. Lodging	Day	\$100	8	\$800.00
d. Per Diem	Day	\$55	8	\$440.00
e. CADD Computer System	Hr	\$15	0	\$0.00
f. 8"x11" Photocopies	Each	\$0.12	500	\$60.00
g. CADD Drawings	Each	\$3	0	\$0.00
h. Field Supplies (WQ meter, hand auger and supplies)	LS	\$3,000	1.10	\$3,300.00
i. Subcontractor (JAEE)	LS	\$5,600	1.10	\$6,160.00
Subtotal Reimbursables				\$12,322.25
TOTAL ESTIMATED BUDGET : PHASE 03				\$24,397.25

Table 4

BUDGET ESTIMATE
GROUNDWATER COMPLIANCE TECHNICAL SUPPORT SERVICES
CLASS I LANDFILL AND C&D DEBRIS DISPOSAL FACILITY
INDIAN RIVER COUNTY, FLORIDA

PHASE 04: DATA EVALUATION AND SUMMARY REPORT

ITEM	BASIS	RATE	QUANTITY	ESTIMATED COST
A. Professional Services				
a. Senior Principal	Hr	\$260	8	\$2,080.00
b. Principal	Hr	\$245	4	\$980.00
c. Senior Professional	Hr	\$225	0	\$0.00
d. Project Professional	Hr	\$203	40	\$8,120.00
e. Professional	Hr	\$176	0	\$0.00
f. Senior Staff Professional	Hr	\$154	0	\$0.00
g. Staff Professional	Hr	\$132	40	\$5,280.00
Subtotal Professional Services				\$16,460.00
B. Technical/Administrative Services				
a. Designer	Hr	\$143	0	\$0.00
b. Senior Drafter/Senior CADD Operator	Hr	\$126	16	\$2,016.00
c. Project Administrator	Hr	\$71	0	\$0.00
d. Clerical	Hr	\$55	0	\$0.00
Subtotal Technical/Administrative Services				\$2,016.00
C. Reimbursables				
a. Lodging	Day	\$100	0	\$0.00
b. Per Diem	Day	\$55	0	\$0.00
c. Communications Fee	3% Labor	\$0.03	\$18,476	\$554.28
d. CADD Computer System	Hr	\$15	16	\$240.00
e. Vehicle Rental & Fuel	Day	\$150	0	\$0.00
f. 8"x11" Photocopies	Each	\$0.12	0	\$0.00
g. CADD Drawings	Each	\$3	0	\$0.00
h. Field Supplies (staff gauges and supplies)	LS	\$0	1.07	\$0.00
i. Subcontractor (Ideal Technical Services)	LS	\$0	1.07	\$0.00
j. Subcontractor (JAEE)	LS	\$0	1.07	\$0.00
k. Subcontractor (Peavy)	LS	\$0	1.07	\$0.00
Subtotal Reimbursables				\$794.28
TOTAL ESTIMATED BUDGET : PHASE 04				\$19,270.28