

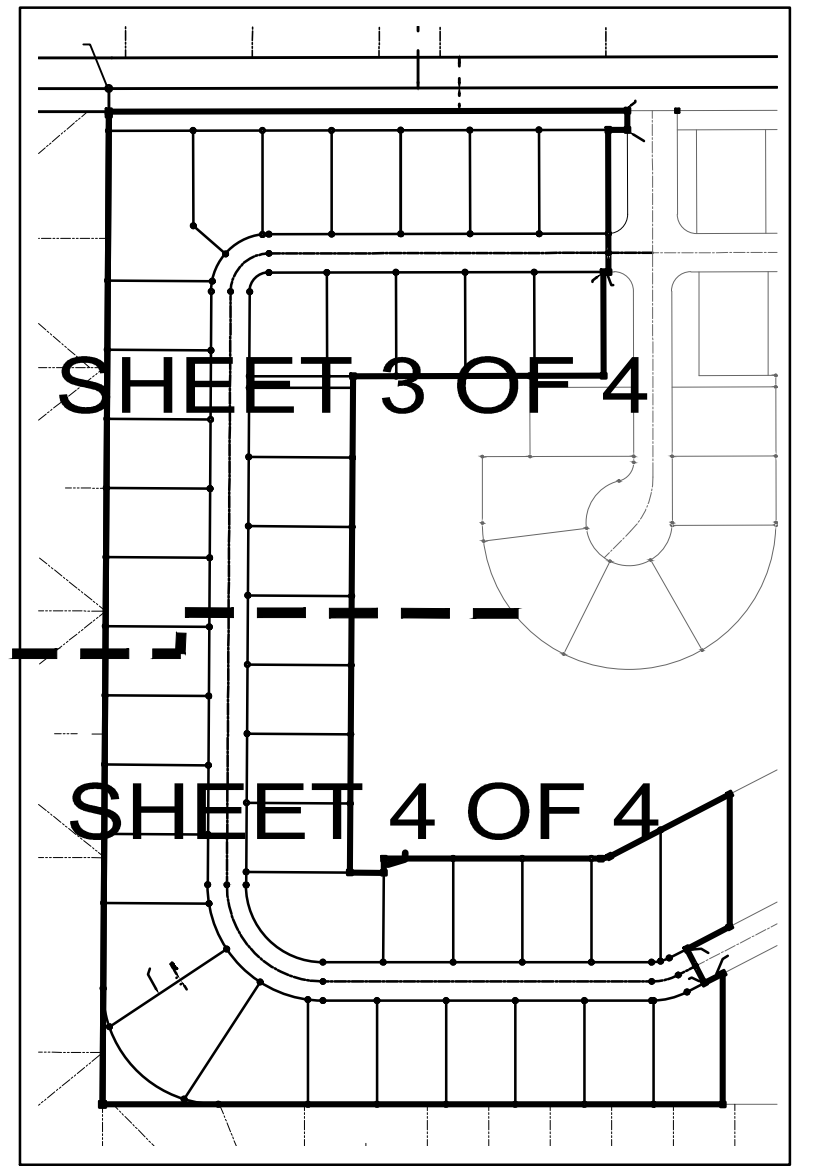
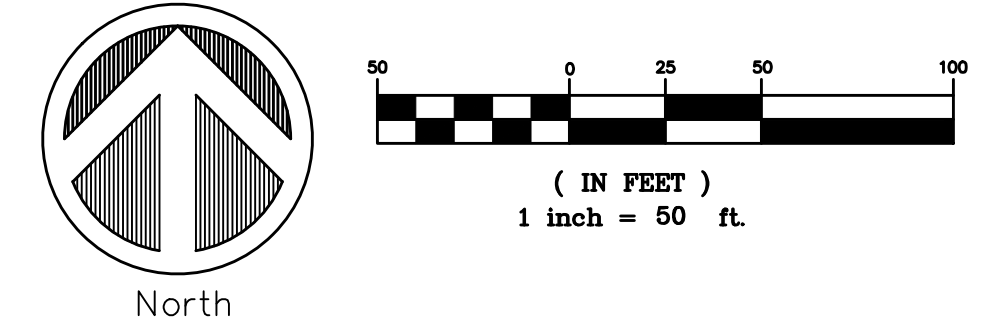
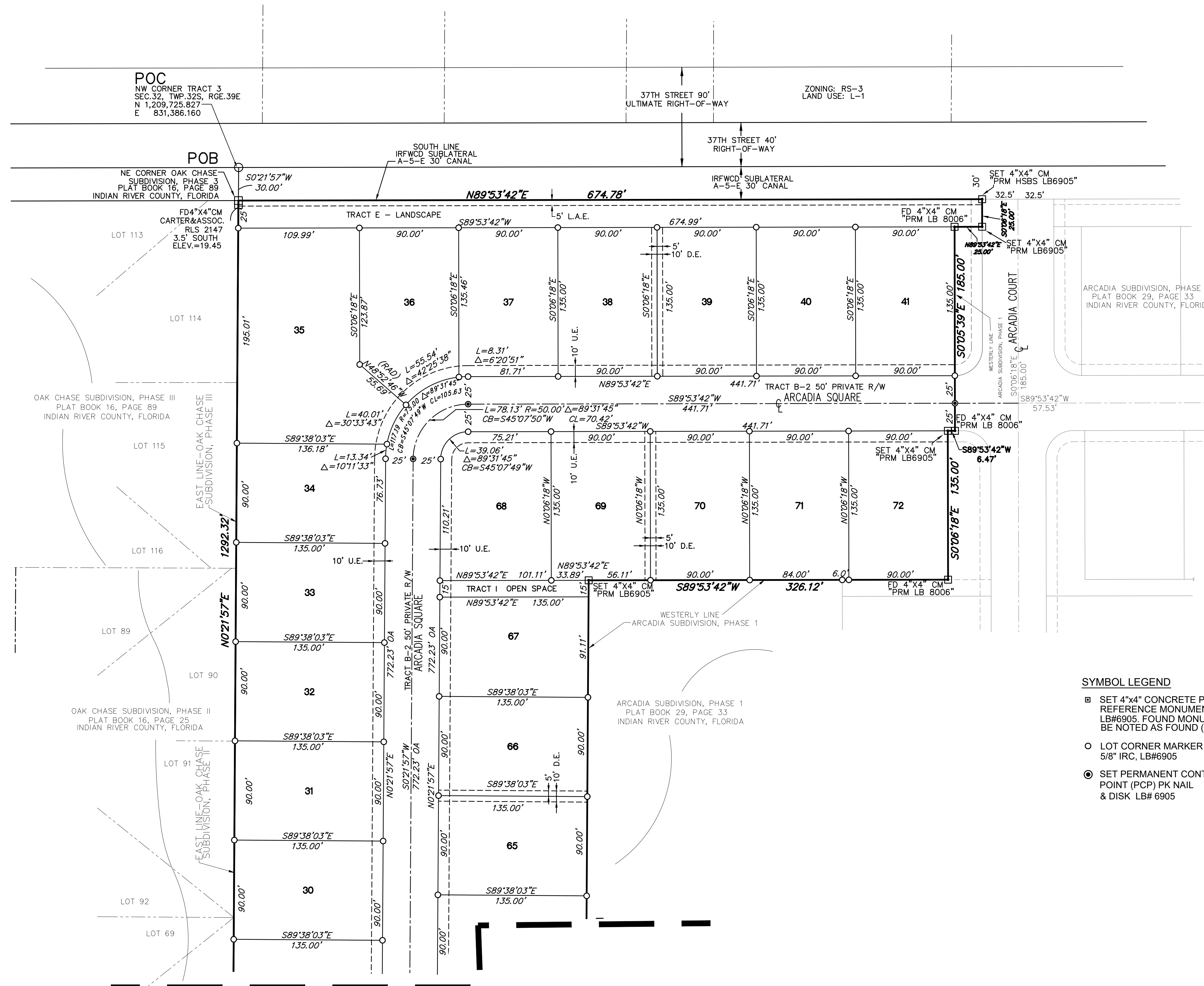
ARCADIA SUBDIVISION - PHASE 2

BEING A REPLAT OF A PORTION OF TRACT 3, SECTION 32, TOWNSHIP 32 SOUTH, RANGE 39 EAST, ACCORDING TO THE PLAT OF "INDIAN RIVER FARMS COMPANY", AS RECORDED IN PLAT BOOK 2, PAGE 25, ST. LUCIE COUNTY PUBLIC RECORDS, SAID LANDS NOW LYING & BEING IN INDIAN RIVER COUNTY, FLORIDA. COVENANTS, RESTRICTIONS OR RESERVATIONS AFFECTING THE OWNERSHIP OR USE OF THE PROPERTY SHOWN IN THIS PLAT ARE FILED IN OFFICIAL RECORD BOOK 3068, PAGE 37, AND AS AMENDED IN OFFICIAL RECORD BOOK 3129, PAGE 909, ALL OF THE PUBLIC RECORDS OF INDIAN RIVER COUNTY, FLORIDA.

PLAT BOOK _____

PAGE _____

CFN _____
CLERK'S FILE NO. _____



KEY MAP
NOT TO SCALE

SYMBOL LEGEND

- SET 4"x4" CONCRETE PERMANENT REFERENCE MONUMENT (PRM) LB#6905. FOUND MONUMENTS WILL BE NOTED AS FOUND (FD)
- LOT CORNER MARKER SET 5/8" IRC, LB#6905
- SET PERMANENT CONTROL POINT (PCP) PK NAIL & DISK LB# 6905

ABBREVIATIONS

- L.M.E.=LAKE MAINTENANCE EASEMENT
- C.M. = CONCRETE MONUMENT
- C.C.R.= CERTIFIED CORNER RECORD
- R = RADIUS
- (RAD) = RADIAL
- RP = RADIUS POINT
- Δ = CENTRAL ANGLE
- L = ARC LENGTH
- CH. = CHORD
- PB.= PLAT BOOK
- O.R.= OFFICIAL RECORD BOOK
- PG. = PAGE
- P.L.S. = PROFESSIONAL LAND SURVEYOR
- (R) = RADIAL
- (TYP) = TYPICAL
- LB = LAND SURVEYING BUSINESS
- IRC = IRON ROD WITH CAP
- POB = POINT OF BEGINNING
- POC = POINT OF COMMENCEMENT
- PCP = PERMANENT CONTROL POINT
- PRM = PERMANENT REFERENCE MONUMENT
- FD. = FOUND
- EASE. = EASEMENT
- R/W= RIGHT OF WAY
- N.G.V.D.= NATIONAL GEODETIC VERTICAL DATUM
- OA = OVERALL
- IRC = IRON ROD AND CAP
- NAVD = NORTH AMERICAN VERTICAL DATUM
- U.E. = UTILITY EASEMENT
- D.E. = DRAINAGE EASEMENT
- L.E. = LANDSCAPE EASEMENT
- L.A.E. = LIMITED ACCESS EASEMENT
- S.T.A.E. = STORMWATER TRACT ACCESS EASEMENT
- O.R.D. = OPEN SPACE, RECREATIONAL, DRAINAGE

MATCH LINE SEE SHEET 4 OF 4

PREPARED BY: MATTHEW CROWLEY,
PSM#7214
MERIDIAN LAND SURVEYORS LB6905
DATE OF PREPARATION: JANUARY 2019

HOUSTON, SCHULKE, BITTLE, & STODDARD, INC. D/B/A		SHEET 3 of 4
<p>MERIDIAN LAND SURVEYORS 1717 INDIAN RIVER BLVD, SUITE 201 VERO BEACH, FL 32960 LB#6905 PHONE: 772-794-1213; FAX: 772-794-1096 EMAIL: LB6905@BELL.SOUTH.NET</p>		

