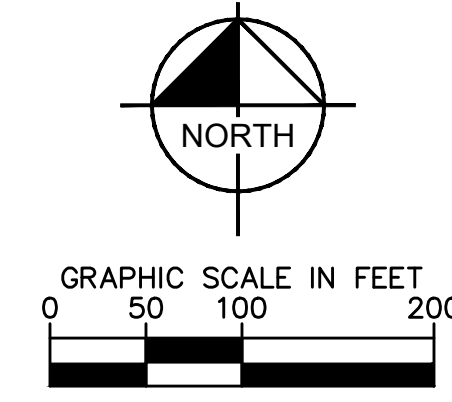
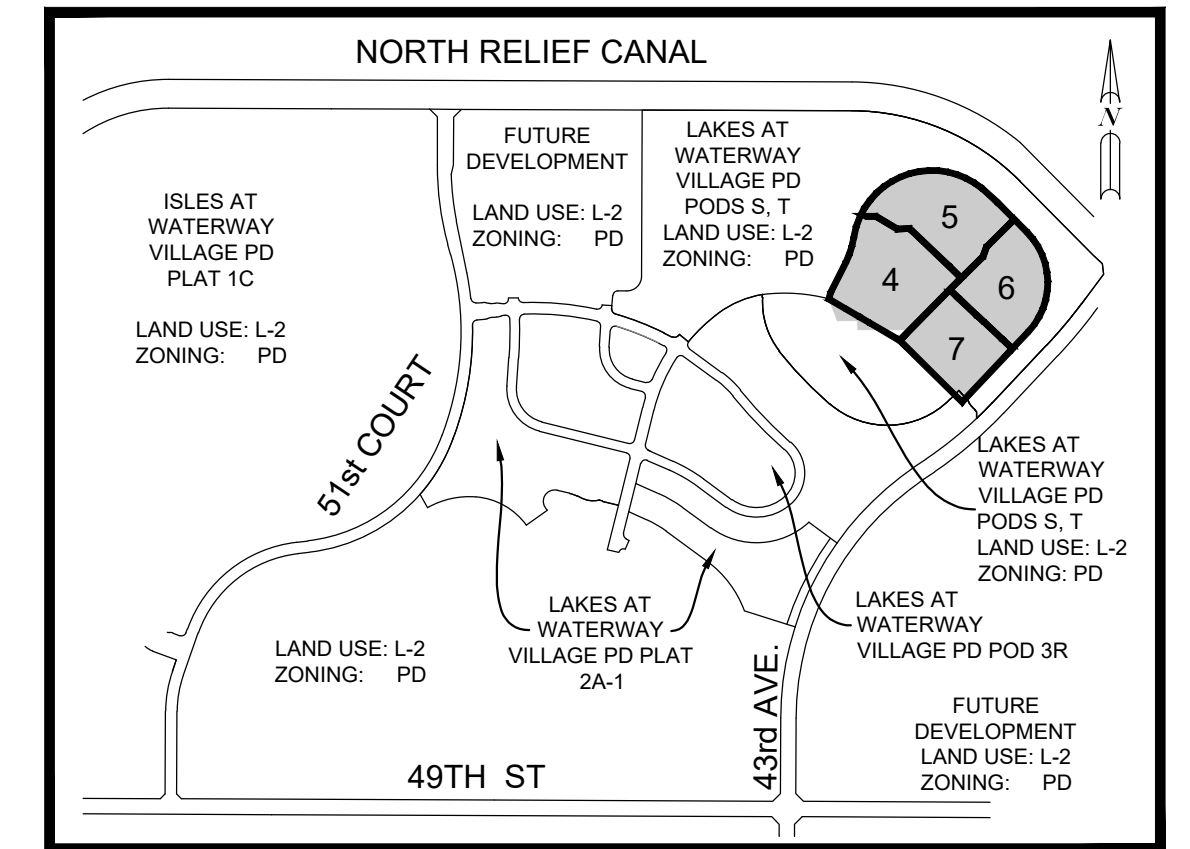


LAKES AT WATERWAY VILLAGE PD - POD U

BEING A REPLAT OF FUTURE DEVELOPMENT TRACT U, LAKES AT WATERWAY VILLAGE PD - PODS S, T, ACCORDING TO THE PLAT THEREOF, AS RECORDED IN PLAT BOOK 29, PAGE 72, PUBLIC RECORDS OF INDIAN RIVER COUNTY, FLORIDA. SECTION 15 AND SECTION 22, TOWNSHIP 32 SOUTH, RANGE 39 EAST, INDIAN RIVER COUNTY, FLORIDA.

PLAT BOOK _____
 PAGE _____
 CFN _____
 CLERK'S FILE NUMBER _____



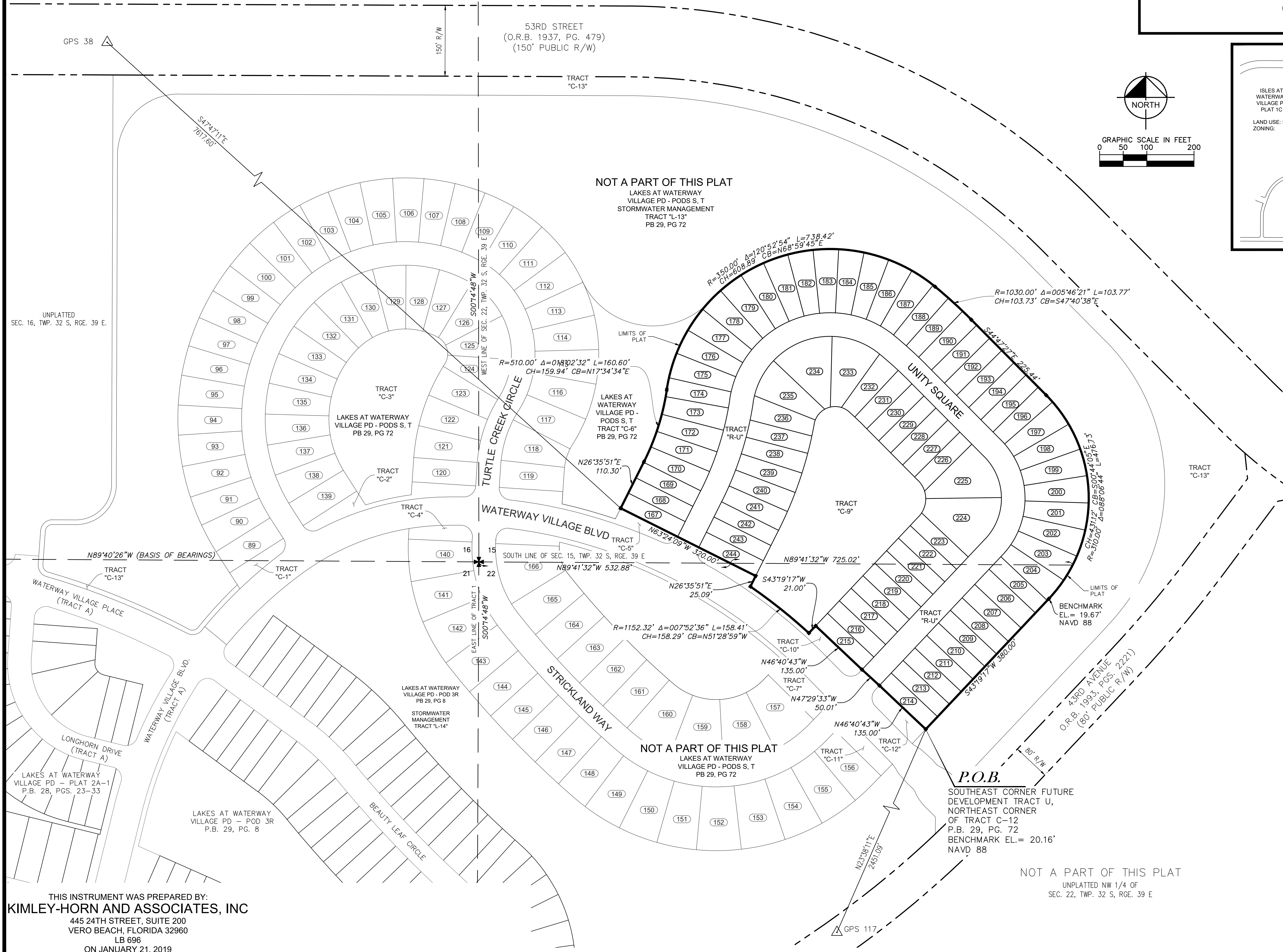
KEY MAP N.T.S.

LEGEND OF SYMBOLS

- PLAT BOUNDARY
- PARCEL LINE
- EASEMENT LINE
- ROAD CENTER LINE
- SECTION LINE
- MATCH LINE
- LOT NUMBER
- PRM, 4x4 CMD OR IRC STAMPED
"PRM KHA LB 696" OR AS NOTED
- PCP, NAIL AND DISC STAMPED
"PCP KHA LB 696"
- LOT CORNER

ABBREVIATIONS

- Δ DELTA (CENTRAL ANGLE)
- CB CHORD BEARING
- CCR CERTIFIED CORNER RECORD
- CD CHORD DISTANCE
- CMD CONCRETE MONUMENT AND DISK
- D.E. DRAINAGE EASEMENT
- L ARC LENGTH
- L.A.E. LIMITED ACCESS EASEMENT
- LB LICENSED BUSINESS
- N.R. NON-RADIAL
- ORB OFFICIAL RECORDS BOOK
- P.B. PLAT BOOK
- PC POINT OF CURVATURE
- PCC POINT OF COMPOUND CURVATURE
- PRC POINT OF REVERSE CURVATURE
- PCP PERMANENT CONTROL POINT
- PG. PAGE
- PI POINT OF INTERSECTION
- P.O.B. POINT OF BEGINNING
- PRM PERMANENT REFERENCE MONUMENT
- PT POINT OF TANGENCY
- R RADIUS
- RAD. RADIAL
- RGE RANGE
- R/W RIGHT-OF-WAY
- SEC SECTION
- TWP TOWNSHIP
- IRC IRON ROD WITH CAP
- EL. ELEVATION
- NAVD 88' NORTH AMERICAN VERTICAL DATUM OF 1988
- U.E. UTILITY EASEMENT
- W.S.E. WATER AND SEWER EASEMENT



THIS INSTRUMENT WAS PREPARED BY:
KIMLEY-HORN AND ASSOCIATES, INC
 445 24TH STREET, SUITE 200
 VERO BEACH, FLORIDA 32960
 LB 696
 ON JANUARY 21, 2019

P.O.B.
 SOUTHEAST CORNER FUTURE
 DEVELOPMENT TRACT U,
 NORTHEAST CORNER
 OF TRACT C-12
 P.B. 29, PG. 72
 BENCHMARK EL. = 20.16'
 NAVD 88

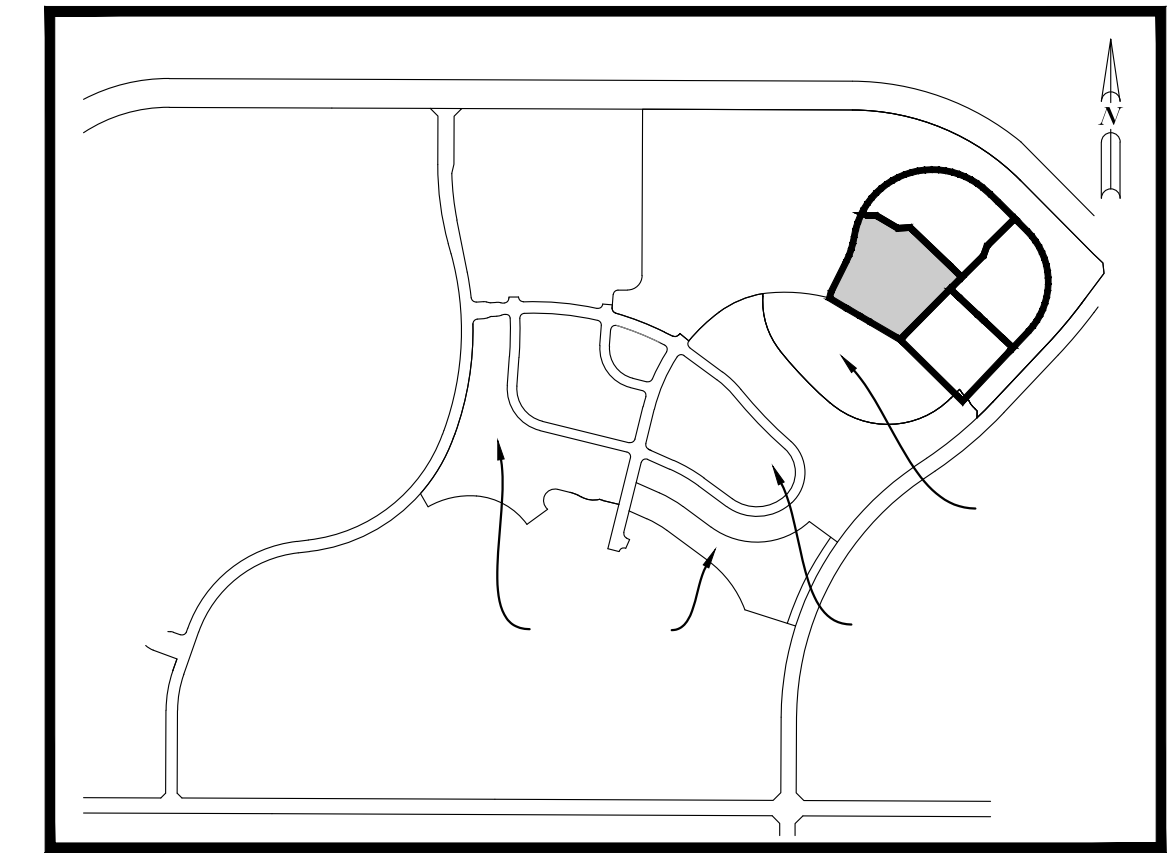
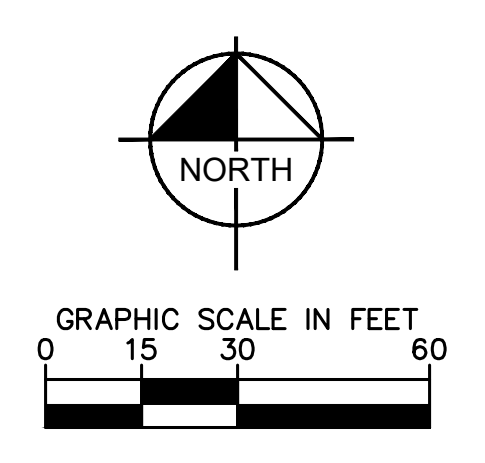
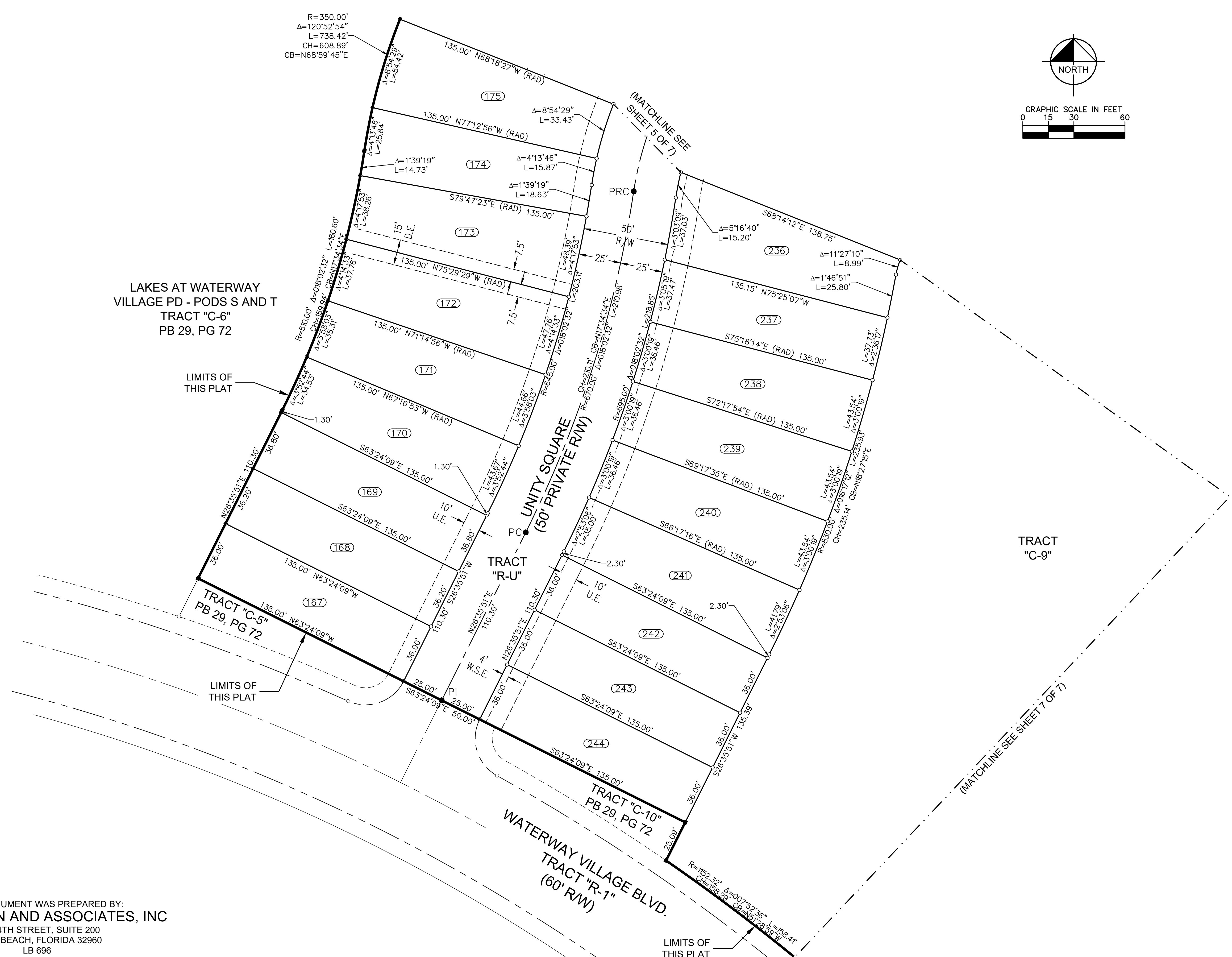
NOT A PART OF THIS PLAT
 UNPLATTED NW 1/4 OF
 SEC. 22, TWP. 32 S, RGE. 39 E

ATTACHMENT #2

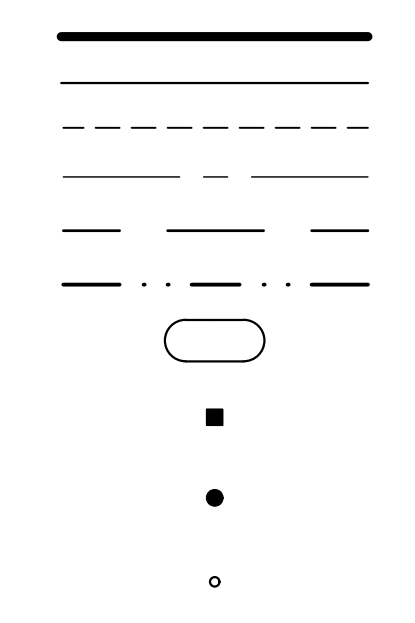
LAKES AT WATERWAY VILLAGE PD - POD U

BEING A REPLAT OF FUTURE DEVELOPMENT TRACT U, LAKES AT WATERWAY VILLAGE PD - PODS S, T, ACCORDING TO THE PLAT THEREOF, AS RECORDED IN PLAT BOOK 29, PAGE 72, PUBLIC RECORDS OF INDIAN RIVER COUNTY, FLORIDA. SECTION 15 AND SECTION 22, TOWNSHIP 32 SOUTH, RANGE 39 EAST, INDIAN RIVER COUNTY, FLORIDA.

PLAT BOOK _____



LEGEND OF SYMBOLS



ABBREVIATIONS

THIS INSTRUMENT WAS PREPARED BY:
KIMLEY-HORN AND ASSOCIATES, INC
 445 24TH STREET, SUITE 200
 VERO BEACH, FLORIDA 32960
 LB 696
 ON JANUARY 21, 2019

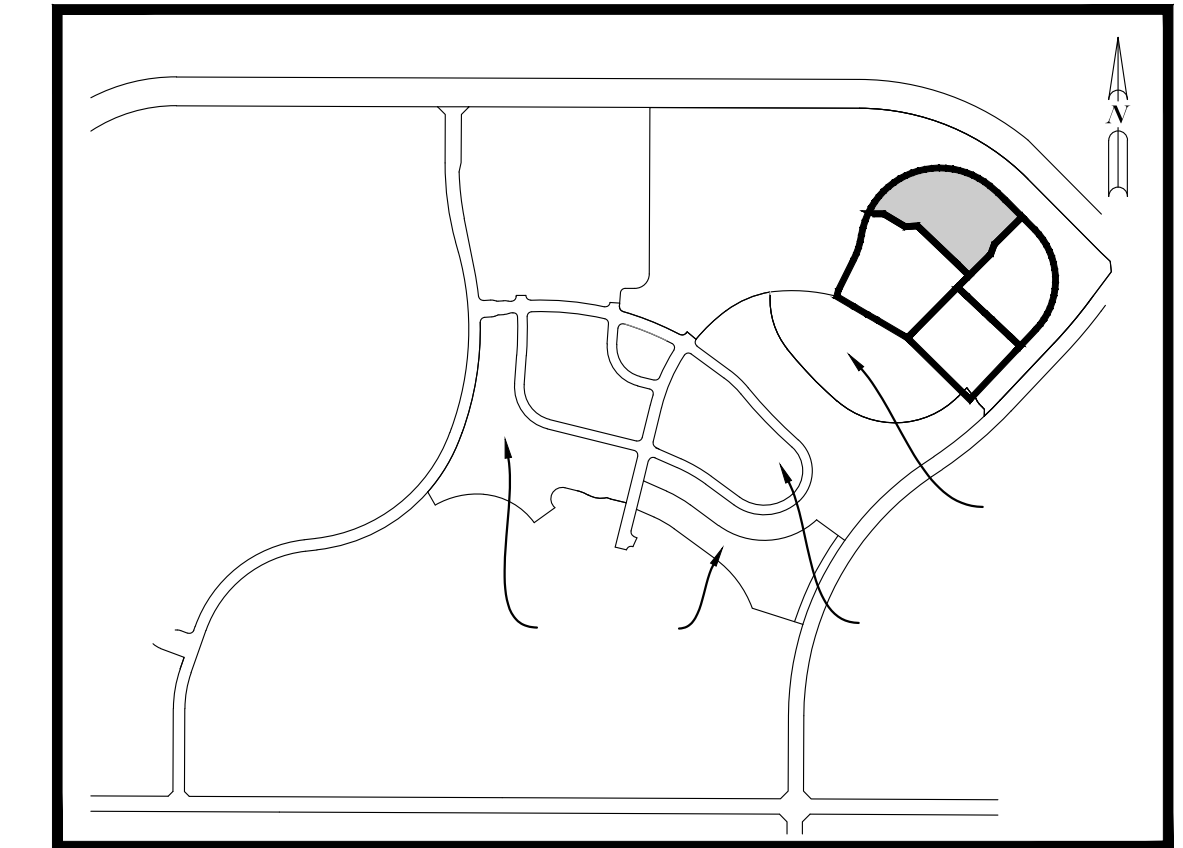
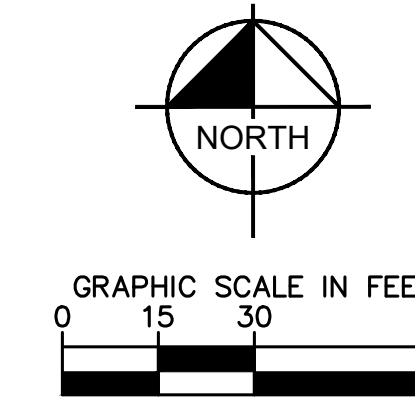
ATTACHMENT #2

LAKES AT WATERWAY VILLAGE PD - POD U

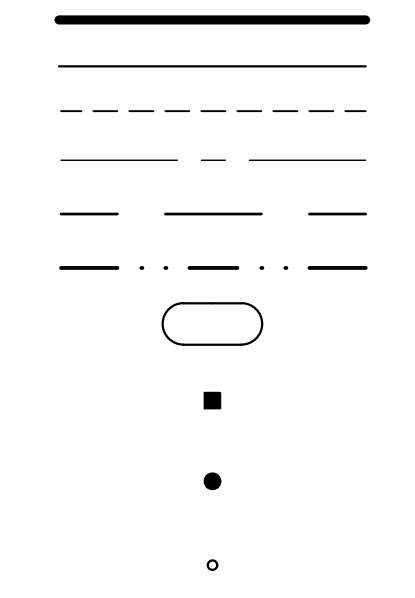
BEING A REPLAT OF FUTURE DEVELOPMENT TRACT U, LAKES AT WATERWAY VILLAGE PD - PODS S, T, ACCORDING TO THE PLAT THEREOF, AS RECORDED IN PLAT BOOK 29, PAGE 72, PUBLIC RECORDS OF INDIAN RIVER COUNTY, FLORIDA. SECTION 15 AND SECTION 22, TOWNSHIP 32 SOUTH, RANGE 39 EAST, INDIAN RIVER COUNTY, FLORIDA.

PLAT BOOK _____

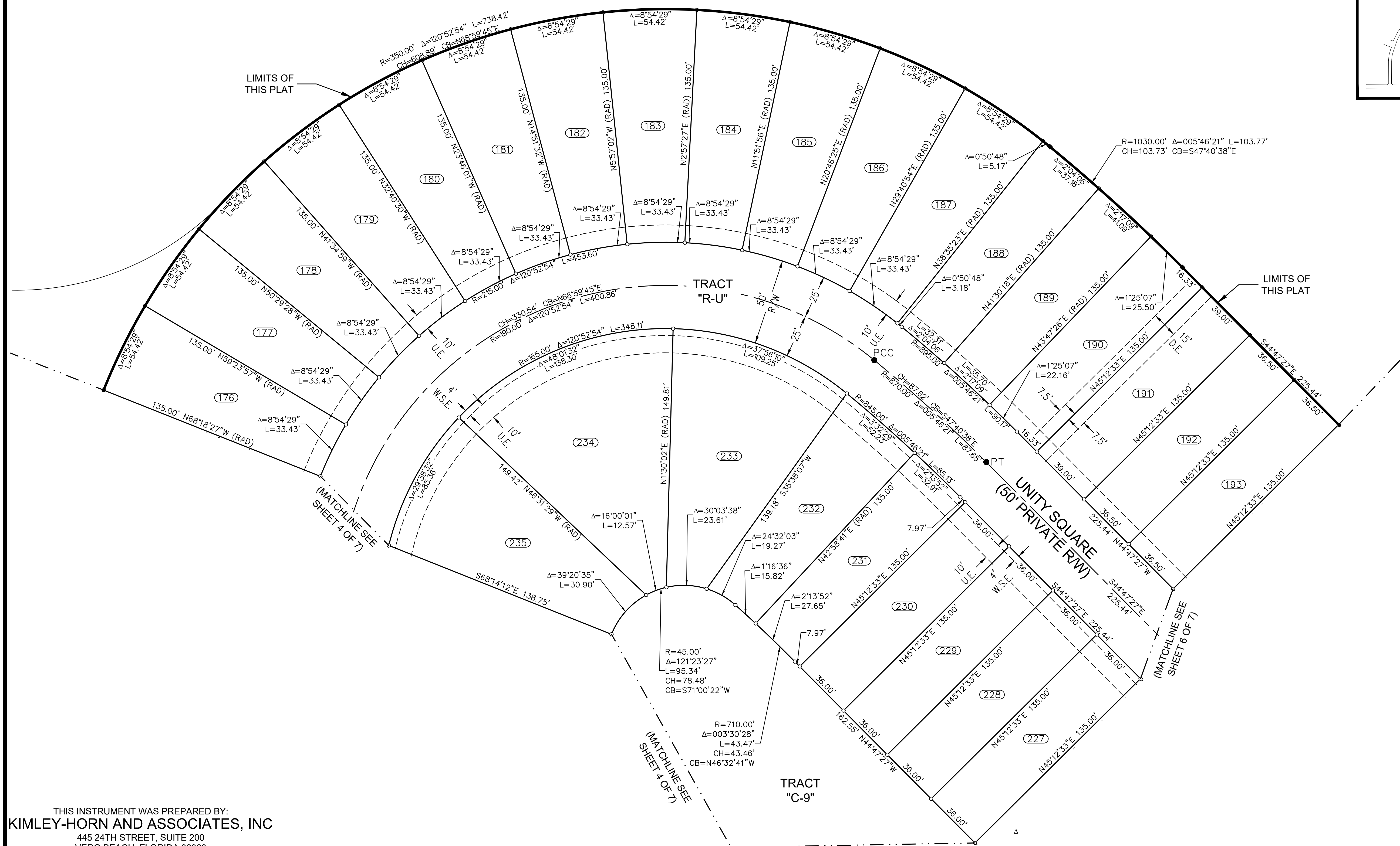
LAKES AT WATERWAY
 VILLAGE PD - PODS S, T
 STORMWATER MANAGEMENT
 TRACT "L-13"
 PB 29, PG 72



LEGEND OF SYMBOLS



ABBREVIATIONS



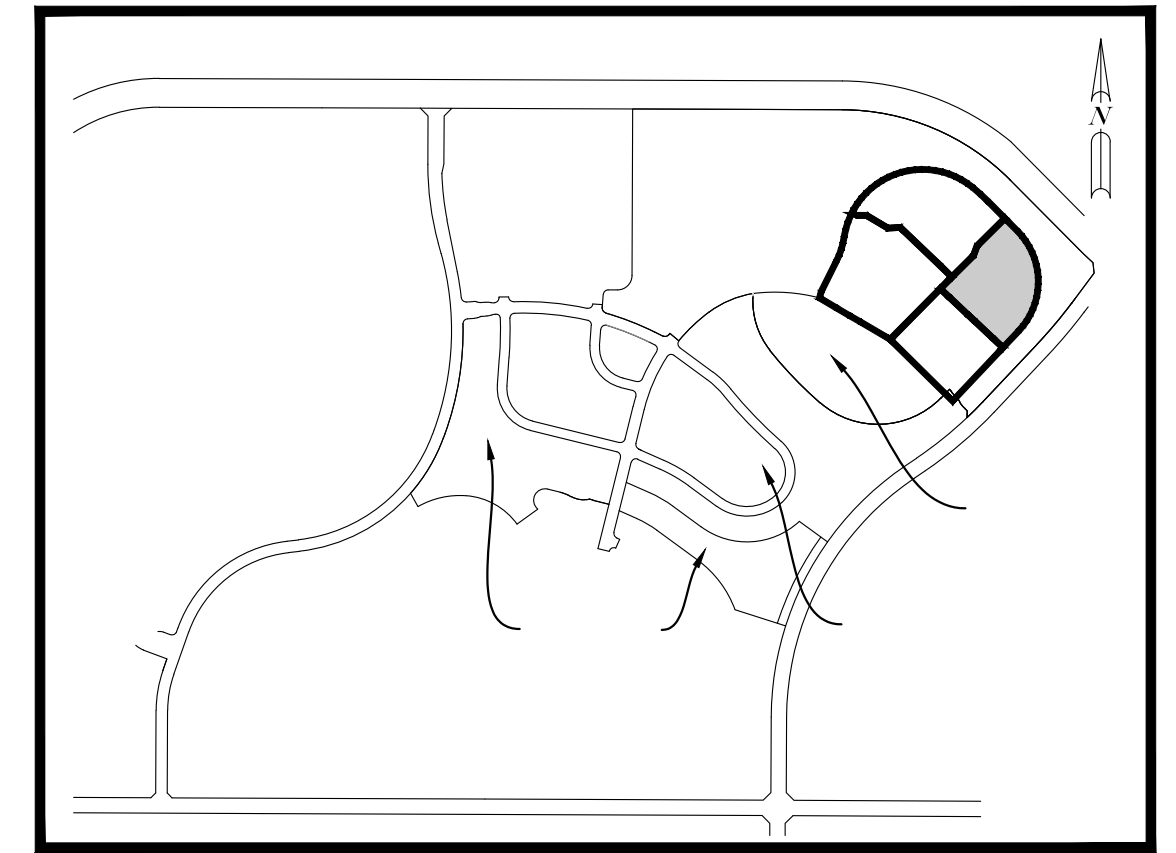
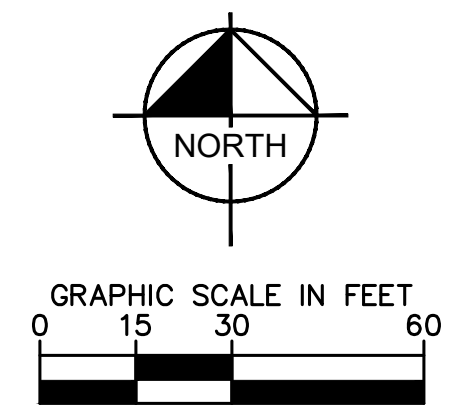
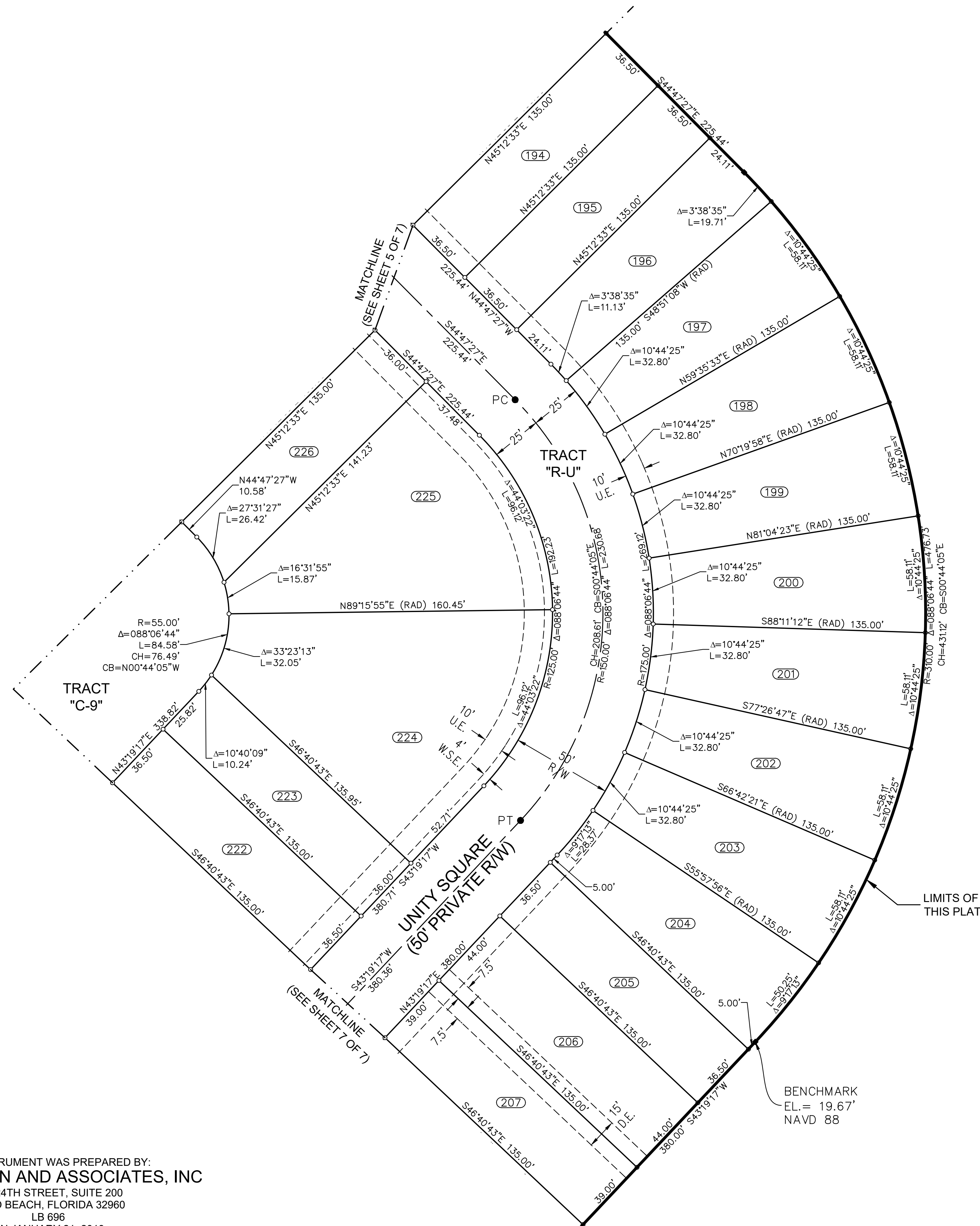
THIS INSTRUMENT WAS PREPARED BY:
KIMLEY-HORN AND ASSOCIATES, INC
 445 24TH STREET, SUITE 200
 VERO BEACH, FLORIDA 32960
 LB 696
 ON JANUARY 21, 2019

ATTACHMENT #2

LAKES AT WATERWAY VILLAGE PD - POD U

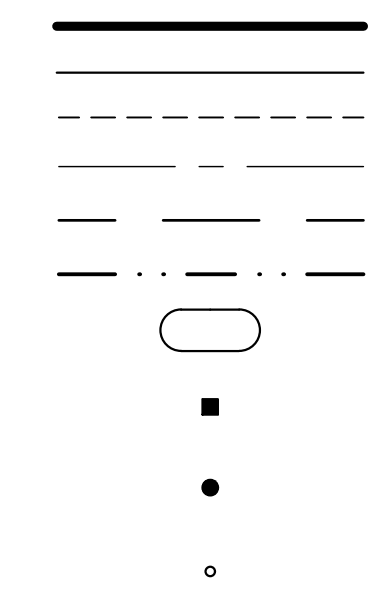
BEING A REPLAT OF FUTURE DEVELOPMENT TRACT U, LAKES AT WATERWAY VILLAGE PD - PODS S, T, ACCORDING TO THE PLAT THEREOF, AS RECORDED IN PLAT BOOK 29, PAGE 72, PUBLIC RECORDS OF INDIAN RIVER COUNTY, FLORIDA. SECTION 15 AND SECTION 22, TOWNSHIP 32 SOUTH, RANGE 39 EAST, INDIAN RIVER COUNTY, FLORIDA.

PLAT BOOK _____



LAKES AT WATERWAY
 VILLAGE PD - PODS S, T
 STORMWATER MANAGEMENT
 TRACT "L-13"
 PB 29, PG 72

LEGEND OF SYMBOLS



ABBREVIATIONS

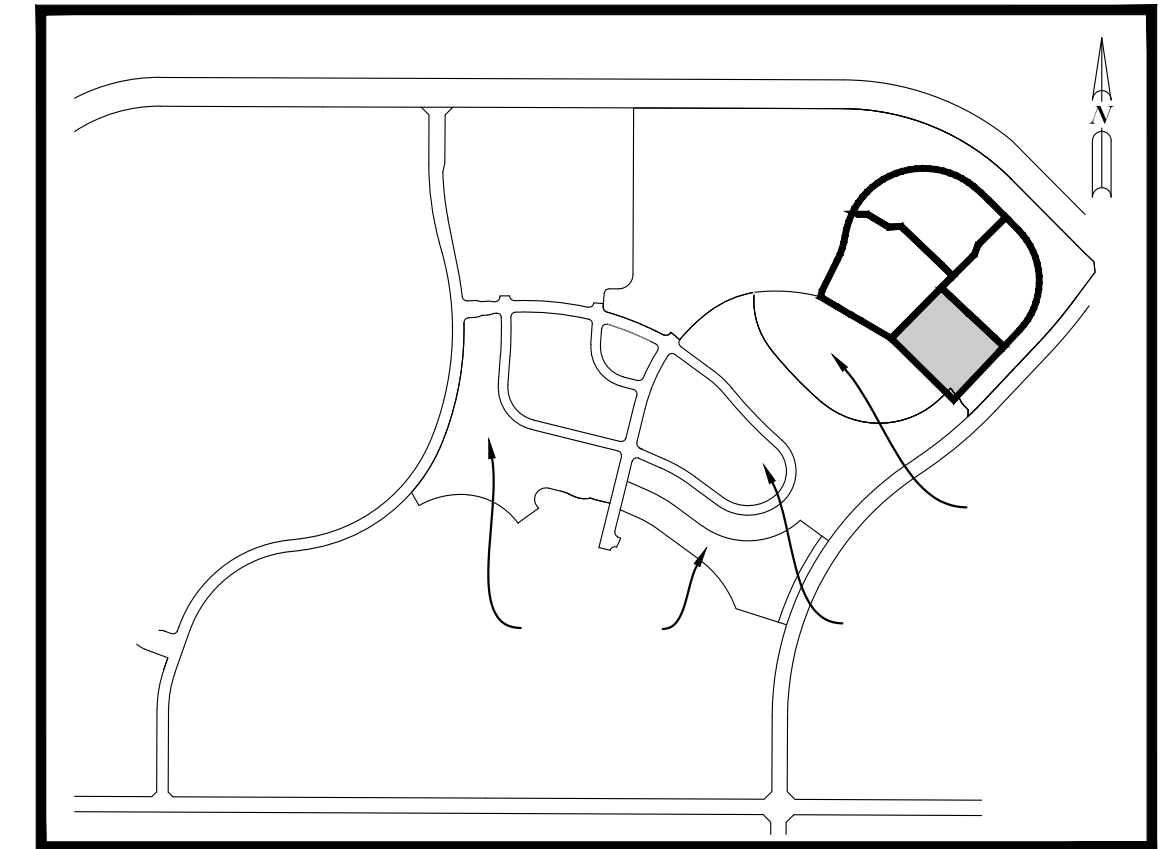
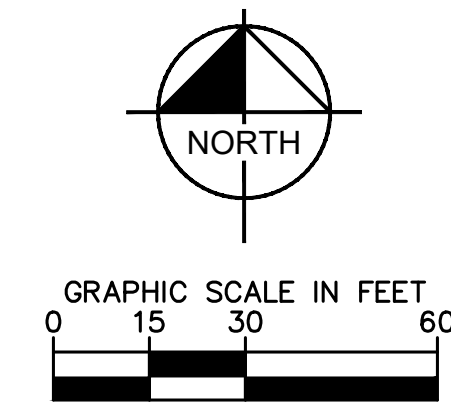
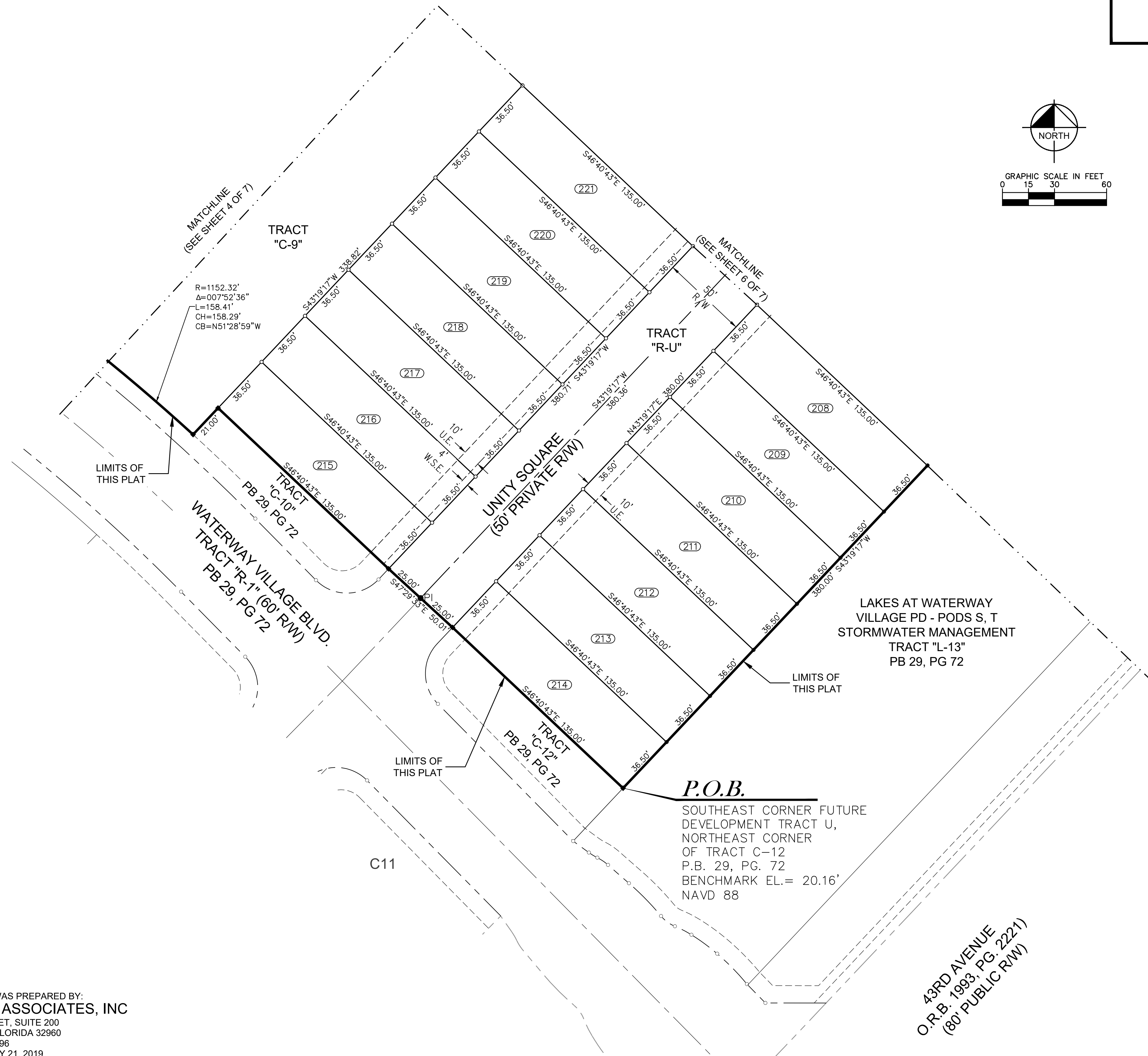
THIS INSTRUMENT WAS PREPARED BY:
KIMLEY-HORN AND ASSOCIATES, INC
 445 24TH STREET, SUITE 200
 VERO BEACH, FLORIDA 32960
 LB 696
 ON JANUARY 21, 2019

ATTACHMENT #2

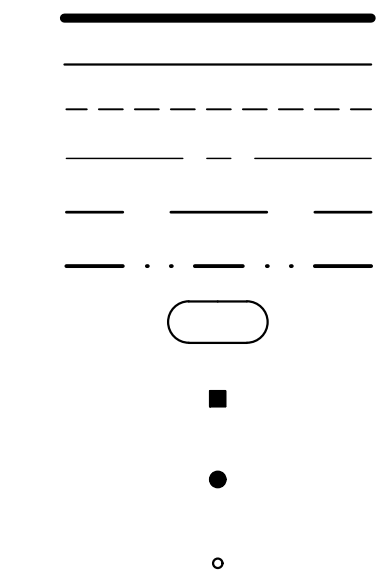
LAKES AT WATERWAY VILLAGE PD - POD U

BEING A REPLAT OF FUTURE DEVELOPMENT TRACT U, LAKES AT WATERWAY VILLAGE PD - PODS S, T, ACCORDING TO THE PLAT THEREOF, AS RECORDED IN PLAT BOOK 29, PAGE 72, PUBLIC RECORDS OF INDIAN RIVER COUNTY, FLORIDA. SECTION 15 AND SECTION 22, TOWNSHIP 32 SOUTH, RANGE 39 EAST, INDIAN RIVER COUNTY, FLORIDA.

PLAT BOOK _____



LEGEND OF SYMBOLS



ABBREVIATIONS

THIS INSTRUMENT WAS PREPARED BY:
KIMLEY-HORN AND ASSOCIATES, INC
 445 24TH STREET, SUITE 200
 VERO BEACH, FLORIDA 32960
 LB 696
 ON JANUARY 21, 2019

ATTACHMENT #2