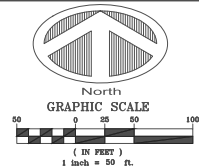
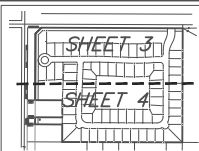


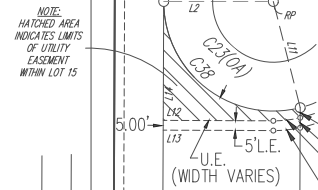
ARABELLA RESERVE

PARCELS 1, 2, 3 & 4, BEING A PORTION OF TRACT 12, SECTION 21, TOWNSHIP 32 SOUTH, RANGE 39 EAST ACCORDING TO THE LAST GENERAL PLAT OF LANDS OF INDIAN RIVER FARMS COMPANY SUBDIVISION AS RECORDED IN PLAT BOOK 2, PAGE 25, ST. LUCIE COUNTY, FLORIDA.

COVENANTS, RESTRICTIONS OR RESERVATIONS AFFECTING THE OWNERSHIP OR USE OF THE PROPERTY SHOWN IN THIS PLAT ARE FILED IN O.R. BOOK _____ PAGE _____, PUBLIC RECORDS OF INDIAN RIVER COUNTY, FLORIDA, SAID LAND NOW LYING AND BEING IN INDIAN RIVER COUNTY, FLORIDA.

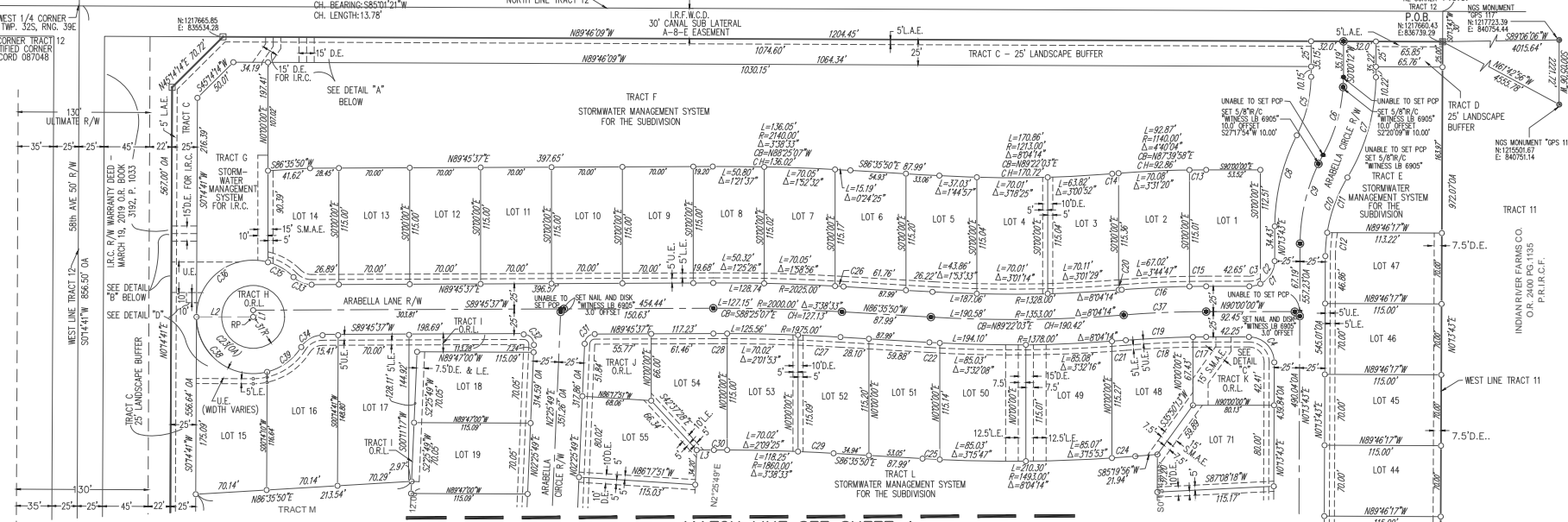


PLAT BOOK _____
PAGE _____
CFN _____
CLERK'S FILE NO. _____



DETAIL "D"

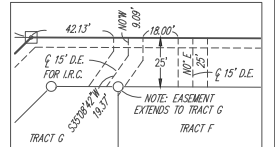
N045°50'E, 5.15'
N045°50'E, 5.13'
LENGTH: 13.85 CH. BEARING: S84°30'46"W
RADIUS: 61' CH. LENGTH: 13.82'
DELTA: 130°27'
LENGTH: 13.81
RADIUS: 66'
DELTA: 115°9'17"
CH. BEARING: S85°01'21"W
CH. LENGTH: 13.78'



MATCH LINE SEE SHEET 4

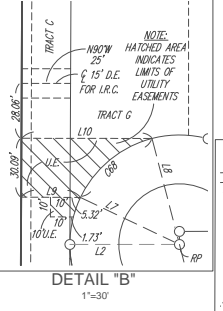
CURVE	LENGTH	RADIUS	DELTA	CH. BEARING	CH. LENGTH
C1	39.17	25.00	89°46'17"	N45°06'52"E	36.28
C2	27.93	25.00	64°00'22"	N32°15'54"E	26.50
C3	11.24	25.00	29°55'56"	N77°03'03"E	11.15
C4	39.37	25.00	90°13'43"	N44°53'08"W	35.43
C5	60.00	130.73	26°17'45"	N13°47'21"E	59.47
C6	80.35	162.73	28°17'20"	N14°43'10"E	79.53
C7	104.25	194.73	30°40'20"	N15°51'14"E	103.01
C8	93.23	200.00	26°42'30"	S13°34'58"W	92.39
C9	91.46	183.00	28°36'07"	S14°32'47"W	90.51
C10	81.62	151.00	30°58'10"	S15°42'48"W	80.63
C11	58.38	151.00	22°09'09"	S20°07'19"W	58.02
C12	23.24	151.00	8°49'01"	S4°38'14"W	23.21
C13	16.48	114.00	0°49'43"	S89°35'09"W	16.48
C14	6.31	114.00	0°19'01"	S85°29'26"W	6.31
C15	16.48	1025.00	0°55'17"	S89°32'21"W	16.48
C16	83.51	1025.00	4°40'04"	S87°39'58"W	83.48
C17	13.05	975.00	0°46'01"	S89°36'59"W	13.05
C18	66.38	975.00	3°54'03"	S87°16'57"W	66.37
C19	79.43	975.00	4°40'04"	S87°39'58"W	79.41
C20	3.08	1328.00	0°07'59"	N85°23'55"E	3.08

CURVE	LENGTH	RADIUS	DELTA	CH. BEARING	CH. LENGTH
C21	13.75	1378.00	0°34'18"	N85°37'05"E	13.75
C22	10.24	1378.00	0°25'32"	S86°48'36"E	10.24
C23	276.86	56.00	28°35'41"	S6°16'41"E	69.52
C24	23.13	1493.00	0°53'15"	N85°46'34"E	23.13
C25	17.07	1493.00	0°39'19"	S86°55'30"E	17.07
C26	8.36	2025.00	0°14'11"	N86°42'56"W	8.36
C27	42.00	1975.00	1°15'30"	N87°12'23"W	42.00
C28	13.54	1975.00	0°23'34"	S89°57'24"W	13.54
C29	35.16	1860.00	1°05'00"	N87°08'20"W	35.16
C30	13.06	1860.00	0°24'09"	S89°57'41"W	13.06
C31	15.24	10.00	8°719'48"	S46°05'43"W	13.81
C32	16.17	10.00	92°40'12"	N43°54'17"W	14.47
C33	19.89	25.00	45°35'32"	S6°26'37"E	19.37
C34	25.16	25.00	57°40'09"	S60°55'32"W	24.11
C35	29.53	56.00	30°12'59"	S59°45'20"W	29.19
C36	102.76	56.00	105°08'10"	S52°34'05"W	88.94
C37	81.47	1000.00	4°40'04"	S87°39'58"W	81.45
C38	101.86	56.00	104°12'53"	S52°06'26"E	88.39
C39	42.71	56.00	4°31'39"	N53°56'18"E	41.68
C68	48.94	56.00	5°04'36"	S50°27'10"W	47.40

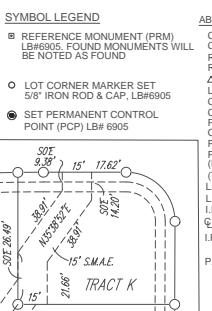


DETAIL "A"

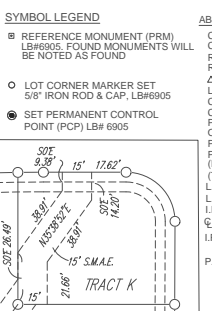
LINE	BEARING	LENGTH
L1	S01°4'23"E	6.88
L2	N90°00'00"E	56.00
L3	N89°45'37"E	17.01
L7	N64°35'08"W	56.00
L8	N14°30'32"W	56.00
L9	N89°39'47"W	30.32
L10	N89°55'36"W	66.74
L11	S14°12'53"E	56.00
L12	N89°45'19"W	56.26
L13	N89°05'19"W	56.28
L14	N15°15'41"E	60.76



DETAIL "B"



DETAIL "C"



ABBREVIATIONS
 C.M. = CONCRETE MONUMENT
 C.C.R. = CERTIFIED CORNER RECORD
 R = RADIUS
 RP = RADIUS POINT
 Δ = CENTRAL ANGLE
 L = ARC LENGTH
 CH = CHORD LENGTH
 CB = CHORD BEARING
 PB = PLAT BOOK
 O.R. = OFFICIAL RECORD BOOK
 PG. = PAGE
 P.L.S. = PROFESSIONAL LAND SURVEYOR
 (RV) = RADIAL
 (TYP.) = TYPICAL
 L.B.S. = LAND SURVEYING BUSINESS
 L.A.E. = LIMITED ACCESS EASEMENT
 I.R.C. = INDIAN RIVER COUNTY
 C = CENTERLINE
 I.R.F.W.C.D. = INDIAN RIVER FARMS WATER CONTROL DISTRICT
 P.R.I.R.C.F. = PUBLIC RECORDS OF INDIAN RIVER COUNTY, FLORIDA

POB = POINT OF BEGINNING
 POC = POINT OF COMMENCEMENT
 PCP = PERMANENT CONTROL POINT
 PRM = PERMANENT REFERENCE MONUMENT
 FD. = FOUND
 EASE. = EASEMENT
 R/W. = RIGHT OF WAY
 N.G.V.D. = NATIONAL GEODETIC DATUM
 OA = OVERALL
 IRD = IRON ROD AND CAP
 NAVD = NORTH AMERICAN VERTICAL DATUM
 U.E. = UTILITY EASEMENT
 D.L.E. = DRAINAGE & LANDSCAPE EASEMENT
 L.A.E. = LANDSCAPE EASEMENT
 O.R.L. = OPEN SPACE, RECREATION & LANDSCAPE
 S.M.A.E. = STORMWATER MAINTENANCE ACCESS EASEMENT

PREPARED BY: MATTHEW CROWLEY, PSM#7214
 MERIDIAN LAND SURVEYORS LB6905
 DATE OF PREPARATION: JANUARY 2019

HOUSTON, SCHULKE, BITTLE, & STODDARD, INC. D/B/A
MERIDIAN
 LAND SURVEYORS
 1717 INDIAN RIVER BLVD, SUITE 201
 VERO BEACH, FL 33964 LB6905
 PHONE: 772-944-1215, FAX: 772-794-1096
 EMAIL: LB6905@BELLSOUTH.NET

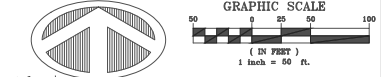
SHEET
 3 of 4

ARABELLA RESERVE

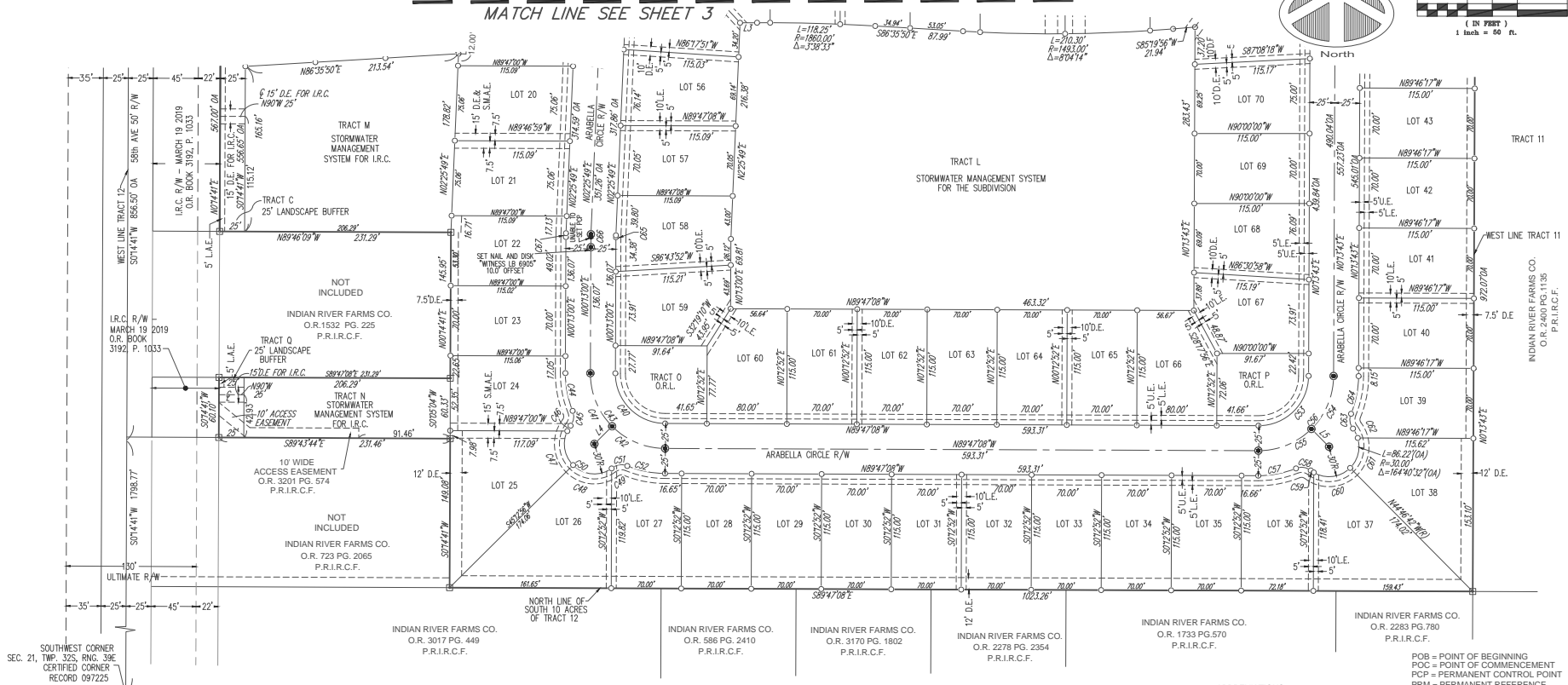
PARCELS 1, 2, 3 & 4, BEING A PORTION OF TRACT 12, SECTION 21, TOWNSHIP 32 SOUTH, RANGE 39 EAST ACCORDING TO THE LAST GENERAL PLAT OF LANDS OF INDIAN RIVER FARMS COMPANY SUBDIVISION AS RECORDED IN PLAT BOOK 2, PAGE 25, ST. LUCIE COUNTY, FLORIDA.

COVENANTS, RESTRICTIONS OR RESERVATIONS AFFECTING THE OWNERSHIP OR USE OF THE PROPERTY SHOWN IN THIS PLAT ARE FILED IN O.R. BOOK _____ PAGE _____ PUBLIC RECORDS OF INDIAN RIVER COUNTY, FLORIDA, SAID LAND NOW LYING AND BEING IN INDIAN RIVER COUNTY, FLORIDA.

PLAT BOOK _____
PAGE _____
CFN _____
CLERK'S FILE NO. _____



MATCH LINE SEE SHEET 3

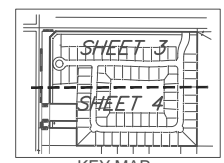


SOUTHWEST CORNER
SEC. 21, TWP. 32S, RNG. 39E
CERTIFIED CORNER
RECORD 097225

Curve Table					
CURVE	LENGTH	RADIUS	DELTA	CH. BEARING	CH. LENGTH
C40	78.54'	50.00'	90°00'08"	S44°47'04"E	70.71'
C41	58.91'	75.00'	45°00'04"	S22°17'02"E	57.40'
C42	58.91'	75.00'	45°00'04"	S67°17'06"E	57.40'
C43	117.82'	75.00'	90°00'08"	S44°47'04"E	106.07'
C44	38.72'	100.00'	22°10'58"	S10°52'29"E	38.47'
C45	15.58'	15.00'	59°31'10"	N7°47'37"E	14.89'
C46	6.37'	30.00'	12°09'23"	S31°28'31"W	6.35'
C47	38.75'	30.00'	70°10'53"	S9°41'37"E	34.49'
C48	42.07'	30.00'	80°21'16"	S84°57'42"E	38.71'
C49	1.04'	30.00'	1°59'00"	N53°52'10"E	1.04'
C50	86.22'	30.00'	164°40'32"	S44°47'04"E	59.46'
C51	15.58'	15.00'	59°31'10"	S82°38'15"W	14.89'
C52	38.72'	100.00'	22°10'58"	S78°41'39"E	38.47'
C53	78.53'	50.00'	89°59'09"	N45°13'18"E	70.70'
C54	58.90'	75.00'	44°59'35"	N22°43'30"E	57.39'
C55	58.90'	75.00'	44°59'35"	N67°43'05"E	57.39'

Curve Table					
CURVE	LENGTH	RADIUS	DELTA	CH. BEARING	CH. LENGTH
C56	117.79'	75.00'	89°59'09"	N45°13'18"E	106.05'
C57	38.70'	100.00'	22°10'29"	N79°07'38"E	38.46'
C58	15.58'	15.00'	59°31'10"	N82°12'01"W	14.89'
C59	3.64'	30.00'	6°56'44"	S55°54'48"E	3.63'
C60	39.48'	30.00'	75°23'32"	N82°55'04"E	36.69'
C61	32.55'	30.00'	62°09'39"	N14°08'28"E	30.97'
C62	10.56'	30.00'	20°10'37"	N27°01'40"W	10.51'
C63	15.58'	15.00'	59°31'10"	S71°23'23"E	14.89'
C64	38.70'	100.00'	22°10'29"	N11°18'57"E	38.46'
C65	1.93'	50.00'	2°12'48"	S1°19'25"W	1.93'
C66	2.90'	75.00'	2°12'48"	S1°19'25"W	2.90'
C67	3.86'	100.00'	2°12'48"	S1°19'25"W	3.86'

Line Table		
LINE	BEARING	LENGTH
L3	N89°45'37"W	17.01'
L4	N45°12'56"E	25.00'
L5	N44°46'42"W(R)	25.00'



KEY MAP
NOT TO SCALE

- SYMBOL LEGEND**
- SET 4"x4" CONCRETE PERMANENT REFERENCE MONUMENT (PRM) LB#6905. FOUND MONUMENTS WILL BE NOTED AS FOUND
 - LOT CORNER MARKER SET 5/8" IRON ROD & CAP. LB#6905
 - SET PERMANENT CONTROL POINT (PCP) LB#6905

- ABBREVIATIONS**
- C.M. = CONCRETE MONUMENT
 - C.C.R. = CERTIFIED CORNER RECORD
 - R = RADIUS
 - N.G.V.D. = NATIONAL GEODETIC VERTICAL DATUM
 - CH. = CHORD LENGTH
 - CB = CHORD BEARING
 - PB = PLAT BOOK
 - O.R. = OFFICIAL RECORD BOOK
 - PG. = PAGE
 - P.L.S. = PROFESSIONAL LAND SURVEYOR
 - (R) = RADIAL
 - (TYP) = TYPICAL
 - L.S. = LAND SURVEYING BUSINESS
 - L.A.E. = LIMITED ACCESS EASEMENT
 - I.R.C. = INDIAN RIVER COUNTY
 - Q = CENTERLINE
 - P.O.B. = POINT OF BEGINNING
 - P.O.C. = POINT OF COMMENCEMENT
 - P.C.P. = PERMANENT CONTROL POINT
 - PRM = PERMANENT REFERENCE MONUMENT
 - FD. = FOUND
 - E.A.S.E. = EASEMENT
 - R/W = RIGHT OF WAY
 - N.G.V.D. = NATIONAL GEODETIC VERTICAL DATUM
 - O.A. = OVERALL
 - IRC = IRON ROD AND CAP
 - NAVD = NORTH AMERICAN VERTICAL DATUM
 - U.E. = UTILITY EASEMENT
 - D.E. = DRAINAGE EASEMENT
 - L.S.E. = LANDSCAPE EASEMENT
 - O.R.L. = OPEN SPACE, RECREATION & LANDSCAPE
 - S.M.A.E. = STORMWATER MAINTENANCE ACCESS EASEMENT

PREPARED BY: MATTHEW CROWLEY, PSM#7214
MERIDIAN LAND SURVEYORS LB6905
DATE OF PREPARATION: JANUARY 2019

HOUSTON, SCHULKE, BITTLE, & STODDARD, INC. D/B/A
MERIDIAN
LAND SURVEYORS
1717 INDIAN RIVER BLVD, SUITE 201
VERO BEACH, FL 33461 LB6905
PHONE: 772-944-1213, FAX: 772-794-1096
EMAIL: LB6905@BELL.SOUTH.NET

SHEET
4 of 4