

# LUCAYA POINTE - PHASE 2

BEING A PORTION OF SECTION 26, TOWNSHIP 32 SOUTH, RANGE 39 EAST.  
VERO BEACH, INDIAN RIVER COUNTY, FLORIDA

PLAT BOOK \_\_\_\_\_

PAGE \_\_\_\_\_

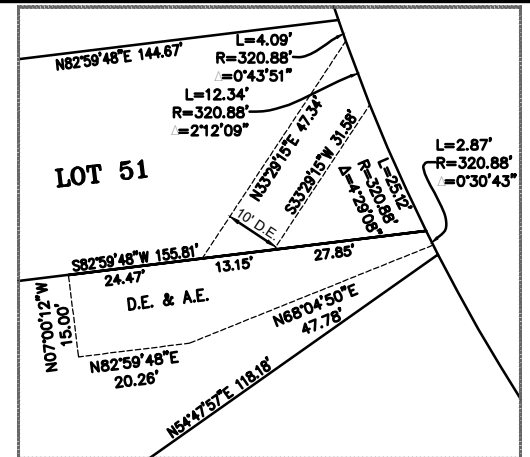
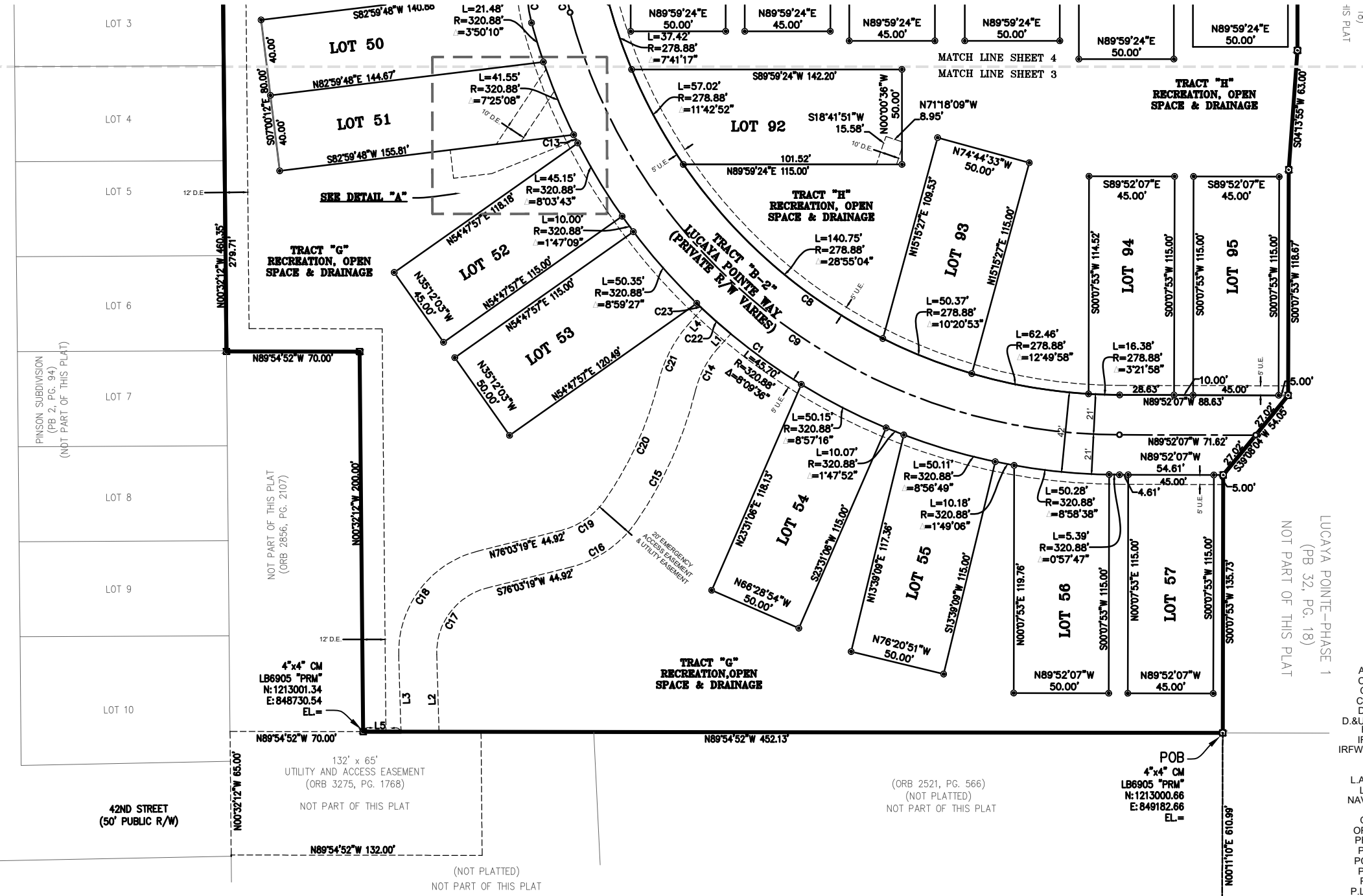
CFN \_\_\_\_\_  
CLERK'S FILE NO. \_\_\_\_\_

**SYMBOL LEGEND**

- SET 4"x4" CONCRETE PERMANENT REFERENCE MONUMENT (PRM) LB#6905. FOUND MONUMENTS WILL BE NOTED AS FOUND
- LOT CORNER MARKER SET 5/8" IRC, LB#6905
- PERMANENT CONTROL POINT SET (PCP) LB# 6905



COVENANTS, RESTRICTIONS OR RESERVATIONS AFFECTING THE OWNERSHIP OR USE OF THE PROPERTY SHOWN ON THIS PLAT ARE FILED IN OFFICIAL RECORD BOOK 3532, PAGE 1396, PUBLIC RECORDS OF INDIAN RIVER COUNTY, FLORIDA.



DETAIL "A" SC: 1:16

CURVE	LENGTH	RADIUS	Δ	CH. BEARING	CH. LENGTH
C1	419.29'	320.88'	74°52'03"	S52°26'40"E	390.09'
C8	364.41'	278.88'	74°52'05"	S52°26'41"E	339.03'
C9	391.85'	299.88'	74°52'03"	S52°26'40"E	364.56'
C13	4.82'	320.88'	0°51'39"	S26°41'47"E	4.82'
C14	23.74'	50.00'	27°12'13"	S27°55'00"W	23.52'
C15	74.46'	210.00'	20°18'55"	N24°28'21"E	74.07'
C16	43.38'	60.00'	41°25'30"	N55°20'34"E	42.44'
C17	47.58'	35.00'	77°52'59"	S37°06'49"W	44.00'
C18	74.76'	55.00'	77°52'32"	S37°07'03"W	69.13'
C19	28.92'	40.00'	41°25'30"	N55°20'34"E	28.29'
C20	67.37'	190.00'	20°18'55"	N24°28'21"E	67.02'
C21	33.24'	70.00'	27°12'13"	S27°55'00"W	32.92'
C22	20.00'	320.88'	3°34'18"	S48°28'26"E	20.00'
C23	4.05'	320.88'	0°43'22"	S46°18'01"E	4.05'

- ABBREVIATIONS**
- Δ = CENTRAL ANGLE
  - A.E. = ACCESS EASEMENT
  - C.E. = CONSERVATION EASEMENT
  - CH. = CHORD
  - C.M. = CONCRETE MONUMENT
  - D.E. = DRAINAGE EASEMENT
  - D.&U.E. = DRAINAGE & UTILITY EASEMENT
  - FD. = FOUND
  - IRC = IRON ROD WITH CAP
  - IRFWCD = INDIAN RIVER FARMS WATER CONTROL DISTRICT
  - L = ARC LENGTH
  - L.A.E. = LIMITED ACCESS EASEMENT
  - L.B. = LAND SURVEYING BUSINESS
  - NAVD = NORTH AMERICAN VERTICAL DATUM 1988
  - OA = OVERALL
  - ORB = OFFICIAL RECORD BOOK
  - PBS = PLAT BOOK ST. LUCIE COUNTY
  - P.C. = POINT OF CURVATURE
  - PCP = PERMANENT CONTROL POINT
  - P.D. = PROPOSED DISTANCE
  - PG. = PAGE
  - P.L.S. = PROFESSIONAL LAND SURVEYOR
  - PRM = PERMANENT REFERENCE MONUMENT
  - POB = POINT OF BEGINNING
  - POC = POINT OF COMMENCEMENT
  - R = RADIUS
  - (R) = RADIAL
  - RP = RADIUS POINT
  - R/W = RIGHT OF WAY
- S.M.E. = STORMWATER MAINTENANCE EASEMENT  
S.W.E. = SIDEWALK EASEMENT (TYP.) = TYPICAL  
U.E. = UTILITY EASEMENT

**Line Table**

LINE	LENGTH	BEARING
L1	11.09'	N41°31'07"E
L2	40.64'	N1°43'17"W
L3	39.98'	N1°42'38"W
L4	11.09'	N41°31'07"E
L5	19.91'	S89°54'52"E

**P.O.C.**  
1/4 SECTION CORNER CENTER OF SEC. 26-32S-39E BEING THE SAME AS SW CORNER OF THE NE 1/4 OF SEC. 26-32S-39E  
N: 1212341.17  
E: 848662.18

HOUSTON, SCHULKE, BITTLE, & STODDARD, INC. D/B/A  
**MERIDIAN LAND SURVEYORS**  
1717 INDIAN RIVER BLVD, SUITE 201  
VERO BEACH, FL. 32960 LB#6905  
PHONE: 772-794-1213, FAX: 772-794-1096  
EMAIL: INFO@MLS-LB6905.COM

**SHEET 3 of 4**

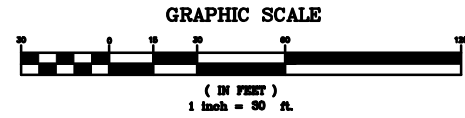
# LUCAYA POINTE - PHASE 2

BEING A PORTION OF SECTION 26, TOWNSHIP 32 SOUTH, RANGE 39 EAST.  
VERO BEACH, INDIAN RIVER COUNTY, FLORIDA

PLAT BOOK \_\_\_\_\_

PAGE \_\_\_\_\_

CFN \_\_\_\_\_  
CLERK'S FILE NO. \_\_\_\_\_



**SYMBOL LEGEND**

- SET 4"x4" CONCRETE PERMANENT REFERENCE MONUMENT (PRM) LB#6905. FOUND MONUMENTS WILL BE NOTED AS FOUND
- LOT CORNER MARKER SET 5/8" IRC, LB#6905
- PERMANENT CONTROL POINT SET (PCP) LB# 6905

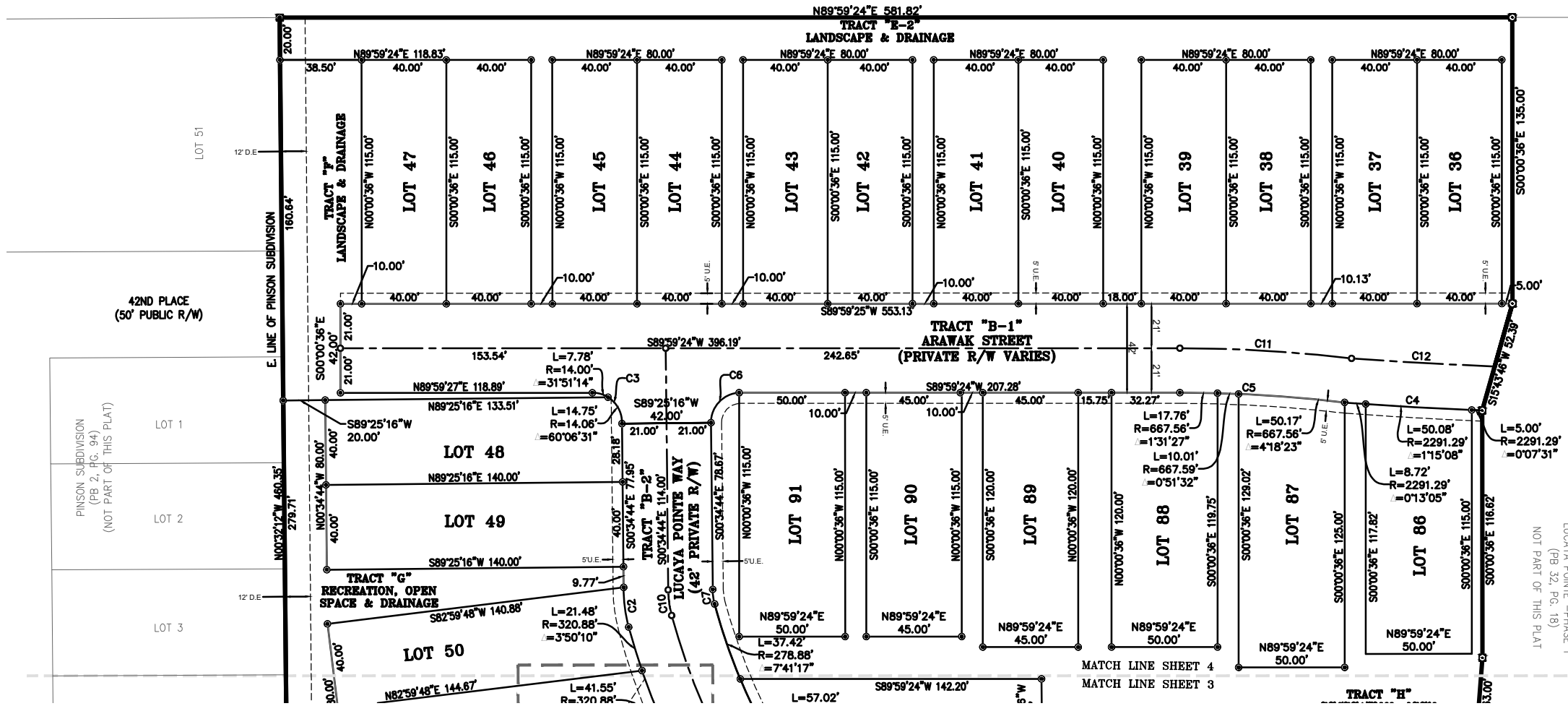


COVENANTS, RESTRICTIONS OR RESERVATIONS AFFECTING THE OWNERSHIP OR USE OF THE PROPERTY SHOWN ON THIS PLAT ARE FILED IN OFFICIAL RECORD BOOK 3532, PAGE 1396, PUBLIC RECORDS OF INDIAN RIVER COUNTY, FLORIDA.

(ORB 3238, PG. 916)  
NOT PLATTED

(NOT PART OF THIS PLAT)

Curve Table					
CURVE	LENGTH	RADIUS	Δ	CH. BEARING	CH. LENGTH
C2	18.90'	69.50'	15°34'51"	S7°15'47"E	18.84'
C3	21.85'	14.00'	89°25'52"	N45°17'40"W	19.70'
C4	63.80'	2291.29'	1°35'43"	S86°43'53"E	63.80'
C5	79.25'	667.56'	6°48'07"	N86°33'07"W	79.21'
C6	21.42'	14.00'	87°39'10"	S43°14'52"W	19.39'
C7	6.93'	27.50'	14°25'54"	S7°47'41"E	6.91'
C10	12.22'	48.50'	14°25'54"	S7°47'41"E	12.18'
C11	81.23'	688.56'	6°45'33"	N86°34'24"W	81.18'
C12	67.70'	2270.29'	1°42'30"	S86°48'03"E	67.69'



**ABBREVIATIONS**

- Δ = CENTRAL ANGLE
- C.E. = CONSERVATION EASEMENT
- CH. = CHORD
- C.M. = CONCRETE MONUMENT
- D.E. = DRAINAGE EASEMENT
- D.&U.E. = DRAINAGE & UTILITY EASEMENT FOUND
- IRC = IRON ROD WITH CAP
- IRFWCD = INDIAN RIVER FARMS WATER CONTROL DISTRICT
- L = ARC LENGTH
- L.A.E. = LIMITED ACCESS EASEMENT
- L.B. = LAND SURVEYING BUSINESS
- NAVD = NORTH AMERICAN VERTICAL DATUM 1988
- OA = OVERALL
- ORB = OFFICIAL RECORD BOOK
- PBS = PLAT BOOK ST. LUCIE COUNTY
- P.C. = POINT OF CURVATURE
- PCP = PERMANENT CONTROL POINT
- P.D. = PROPOSED DISTANCE
- PG. = PAGE
- P.L.S. = PROFESSIONAL LAND SURVEYOR
- PRM = PERMANENT REFERENCE MONUMENT
- POB = POINT OF BEGINNING
- POC = POINT OF COMMENCEMENT
- R = RADIUS
- (R) = RADIAL
- RP = RADIUS POINT
- R/W = RIGHT OF WAY
- S.M.E. = STORMWATER MAINTENANCE EASEMENT
- S.W.E. = SIDEWALK EASEMENT (TYP.)
- U.E. = UTILITY EASEMENT

HOUSTON, SCHULKE, BITTLE, & STODDARD, INC. D/B/A



**MERIDIAN**

LAND SURVEYORS  
1717 INDIAN RIVER BLVD, SUITE 201  
VERO BEACH, FL 32960-1846  
PHONE: 772-794-1213, FAX: 772-794-1096  
EMAIL: INFO@MLS-LB6905.COM



SHEET

4 of 4