

**ABBREVIATIONS:**  
 CA - CENTRAL ANGLE OF CURVE  
 R - RADIUS OF CURVE  
 L - LENGTH OF CURVE  
 CH - CHORD OF CURVE, DIRECTION AND LENGTH  
 R/W - RIGHT-OF-WAY  
 CL - CENTERLINE  
 SEC - SECTION  
 P.B. - PLAT BOOK  
 O.A. - OVERALL  
 PRM - PERMANENT REFERENCE MONUMENT  
 P.P.M. - PERMANENT CONTROL POINT  
 P.R.I.C.F. - PUBLIC RECORDS OF INDIAN RIVER COUNTY, FLORIDA  
 I.R.F.W.C.D. - INDIAN RIVER FARMS WATER CONTROL DISTRICT

(R) - RADIAL  
 (NR) - NOT RADIAL  
 (M) - MEASURED  
 (P) - PLATTED

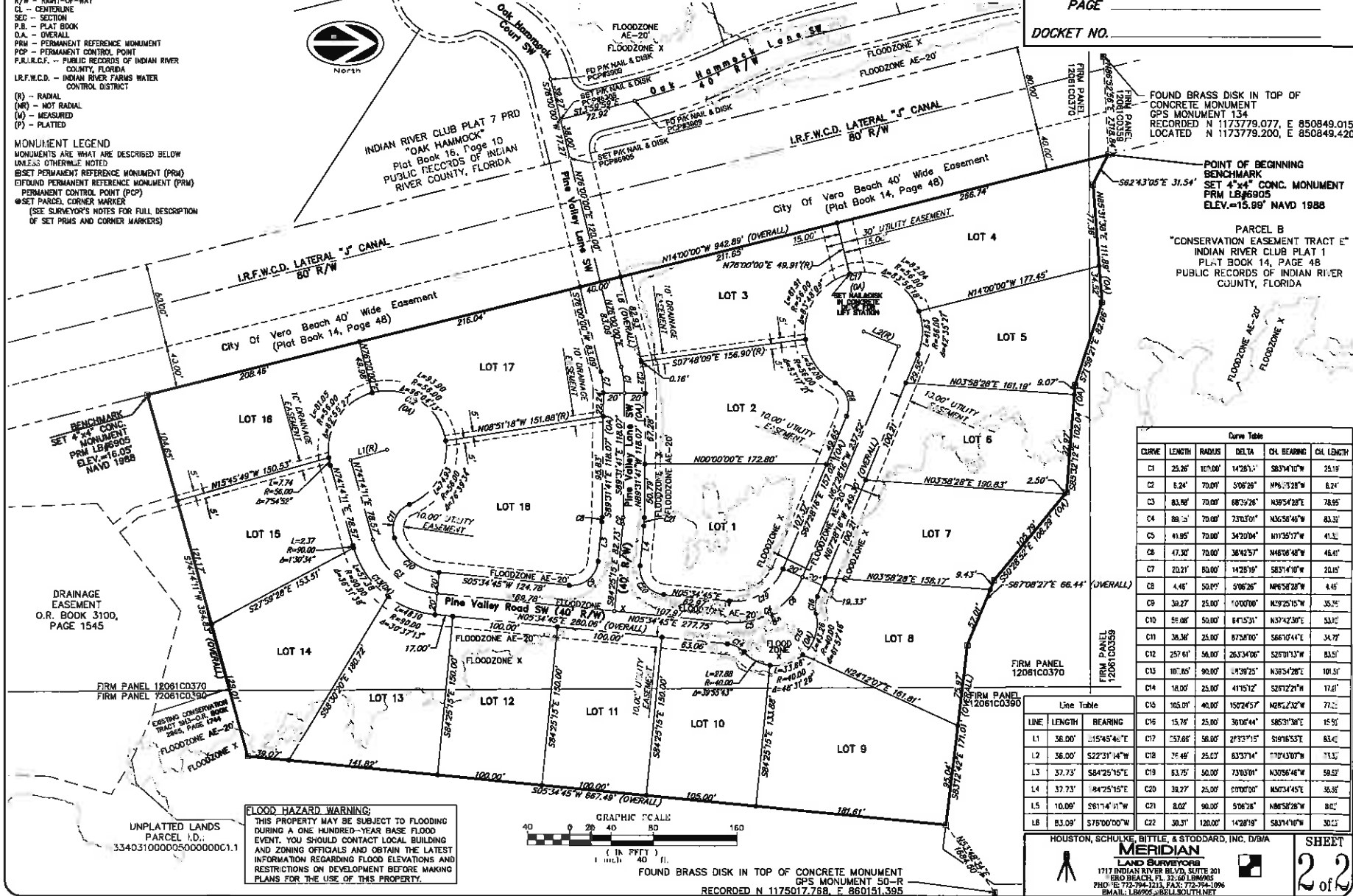
**MONUMENT LEGEND**  
 MONUMENTS ARE WHAT ARE DESCRIBED BELOW UNLESS OTHERWISE NOTED  
 [B] SET PERMANENT REFERENCE MONUMENT (PRM)  
 [F] FOUND PERMANENT REFERENCE MONUMENT (PRM)  
 [P] PERMANENT CONTROL POINT (PCP)  
 [C] SET PAVED CORNER MARKER  
 (SEE SURVEYOR'S NOTES FOR FULL DESCRIPTION OF SET PRMS AND CORNER MARKERS)

# INDIAN RIVER CLUB PLAT 9 PD

PREPARED BY: CHARLES H. BLANCHARD, P6M6755  
 MERIDIAN LAND SURVEYORS 8905  
 DATE OF PREPARATION: JULY 2015

PLAT BOOK \_\_\_\_\_  
 PAGE \_\_\_\_\_  
 DOCKET NO. \_\_\_\_\_

LYING IN SECTION 31, TOWNSHIP 33 SOUTH, RANGE 40 EAST, INDIAN RIVER COUNTY, FLORIDA



FOUND BRASS DISK IN TOP OF CONCRETE MONUMENT GPS MONUMENT 134 RECORDED N 1173779.077, E 850849.015 LOCATED N 1173779.200, E 850849.420

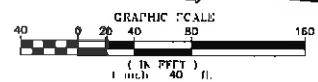
POINT OF BEGINNING BENCHMARK SET 4"x4" CONC. MONUMENT PRM LB#6905 ELEV.=15.99' NAVD 1988

PARCEL B "CONSERVATION EASEMENT TRACT E" INDIAN RIVER CLUB PLAT 1 PLAT BOOK 14, PAGE 48 PUBLIC RECORDS OF INDIAN RIVER COUNTY, FLORIDA

Curve Table					
CURVE	LENGTH	RADIUS	DELTA	CH. BEARING	CH. LENGTH
C1	23.26'	107.00'	14281.1'	S83°10'10"W	25.19'
C2	5.24'	70.00'	5067.6'	NW 73°28'W	6.24'
C3	83.80'	70.00'	68732.6'	N39°54'28"E	78.95'
C4	88.13'	70.00'	73073.0'	N36°58'46"W	83.32'
C5	41.95'	70.00'	34707.4'	N17°35'17"W	41.31'
C6	47.30'	70.00'	36742.57'	N46°08'48"W	46.41'
C7	22.21'	80.00'	14281.9'	S83°14'10"W	20.15'
C8	4.45'	50.00'	5067.6'	NW 52°28'W	4.45'
C9	39.27'	25.00'	10070.0'	N49°25'15"W	35.15'
C10	59.08'	50.00'	64752.1'	N37°42'30"E	53.12'
C11	38.38'	25.00'	87587.00'	S66°15'44"E	34.77'
C12	29.61'	50.00'	26374.06'	S27°11'13"W	33.51'
C13	107.85'	90.00'	47392.5'	N38°54'28"E	101.51'
C14	18.00'	25.00'	41751.2'	S27°12'21"W	17.61'
C15	103.07'	40.00'	150745.7'	N42°23'52"W	71.21'
C16	15.76'	25.00'	36704.4'	S83°13'30"E	15.91'
C17	57.66'	50.00'	27373.15'	S19°16'53"E	63.41'
C18	75.48'	25.00'	63373.4'	N77°43'07"W	71.31'
C19	37.73'	58425.15'E	61.75'	N30°56'46"W	58.52'
C20	37.73'	8425.15'E	31.75'	NW 52°28'W	36.36'
C21	10.00'	58174.17"W	8.02'	NW 52°28'W	8.02'
C22	83.09'	175000.00"W	30.31'	N42°18'19"	30.13'

Line Table					
LINE	LENGTH	BEARING	C16	C15	C14
L1	36.00'	S15°45'40"E	57.66'	56.00'	27373.15'
L2	36.00'	S22°31'44"W	75.48'	25.00'	63373.4'
L3	37.73'	S84°25'15"E	61.75'	50.00'	73073.0'
L4	37.73'	N42°25'15"E	31.75'	25.00'	67007.00'
L5	10.00'	S81°14'17"W	8.02'	90.00'	NW 52°28'W
L6	83.09'	S75°00'00"W	30.31'	120.00'	N42°18'19"

**FLOOD HAZARD WARNING:**  
 THIS PROPERTY MAY BE SUBJECT TO FLOODING DURING A ONE HUNDRED-YEAR BASE FLOOD EVENT. YOU SHOULD CONTACT LOCAL BUILDING AND ZONING OFFICIALS AND OBTAIN THE LATEST INFORMATION REGARDING FLOOD ELEVATIONS AND RESTRICTIONS ON DEVELOPMENT BEFORE MAKING PLANS FOR THE USE OF THIS PROPERTY.



FOUND BRASS DISK IN TOP OF CONCRETE MONUMENT GPS MONUMENT 50-R RECORDED N 1175017.768, E 860151.395

HOUSTON, SCHULKE, BITTLE & STODDARD, INC. D/B/A  
**MERIDIAN**  
 LAND SURVEYORS  
 1717 INDIAN RIVER BLVD., SUITE 201  
 VERO BEACH, FL 32909  
 PH: 772-794-1313, FAX: 772-794-1096  
 EMAIL: LB@9052@BELL.SOUTH.NET

SHEET 2 of 2