

CURVE TABLE						
CURVE #	LENGTH	RADIUS	DELTA	CHORD BEARING	CHORD DISTANCE	TANGENT
C1	337.61'	16528.86'	001°10'13"	S 15° 29' 45" E	337.61'	168.81'
C2	130.35'	100.00'	074°41'05"	N 52° 36' 24" W	121.32'	76.30'
C3	105.59'	17108.86'	000°21'13"	N 15° 05' 15" W	105.59'	52.80'
C4	52.08'	16528.86'	000°10'50"	N 16° 10' 16" W	52.08'	26.04'
C5	228.50'	17128.86'	000°45'52"	S 15° 17' 34" E	228.50'	114.25'
C6	41.32'	215.00'	011°00'37"	S 09° 24' 20" E	41.25'	20.72'
C7	7.69'	40.00'	011°00'38"	N 09° 24' 19" W	7.67'	3.86'
C8	62.83'	40.00'	090°00'00"	N 59° 54' 38" W	56.57'	40.00'
C9	333.58'	16543.86'	001°09'19"	S 15° 29' 18" E	333.58'	166.80'
C10	54.98'	35.00'	090°00'00"	S 30° 05' 22" W	49.50'	35.00'
C11	54.98'	35.00'	090°00'00"	S 59° 54' 38" E	49.50'	35.00'
C12	23.56'	15.00'	090°00'00"	N 59° 54' 38" W	21.21'	15.00'
C13	233.86'	17108.86'	000°46'59"	S 15° 18' 08" E	233.86'	116.93'
C14	337.61'	16528.86'	001°10'13"	S 15° 29' 45" E	337.61'	194.86'

LINE TABLE			LINE TABLE		
LINE#	LENGTH	DIRECTION	LINE#	LENGTH	DIRECTION
L1	20.49'	N 62° 34' 20" E	L12	18.71'	N 00° 03' 04" E
L2	30.00'	S 00° 03' 04" W	L13	20.09'	S 14° 54' 38" E
L3	82.19'	N 14° 54' 38" W	L14	62.82'	S 14° 54' 38" E
L4	101.09'	N 03° 54' 01" W	L15	37.10'	S 14° 54' 38" E
L5	10.25'	N 14° 54' 38" W	L16	32.00'	N 75° 05' 22" E
L6	48.46'	N 21° 49' 28" E	L17	30.00'	S 14° 54' 38" E
L7	64.81'	S 81° 17' 25" W	L18	20.49'	N 62° 34' 20" E
L8	37.81'	N 75° 05' 22" E	L19	20.91'	S 14° 54' 38" E
L9	36.06'	N 71° 13' 14" W			
L10	64.81'	S 68° 53' 19" W			
L11	67.81'	S 75° 05' 22" W			

THE LANDINGS, A COMMERCIAL SUBDIVISION

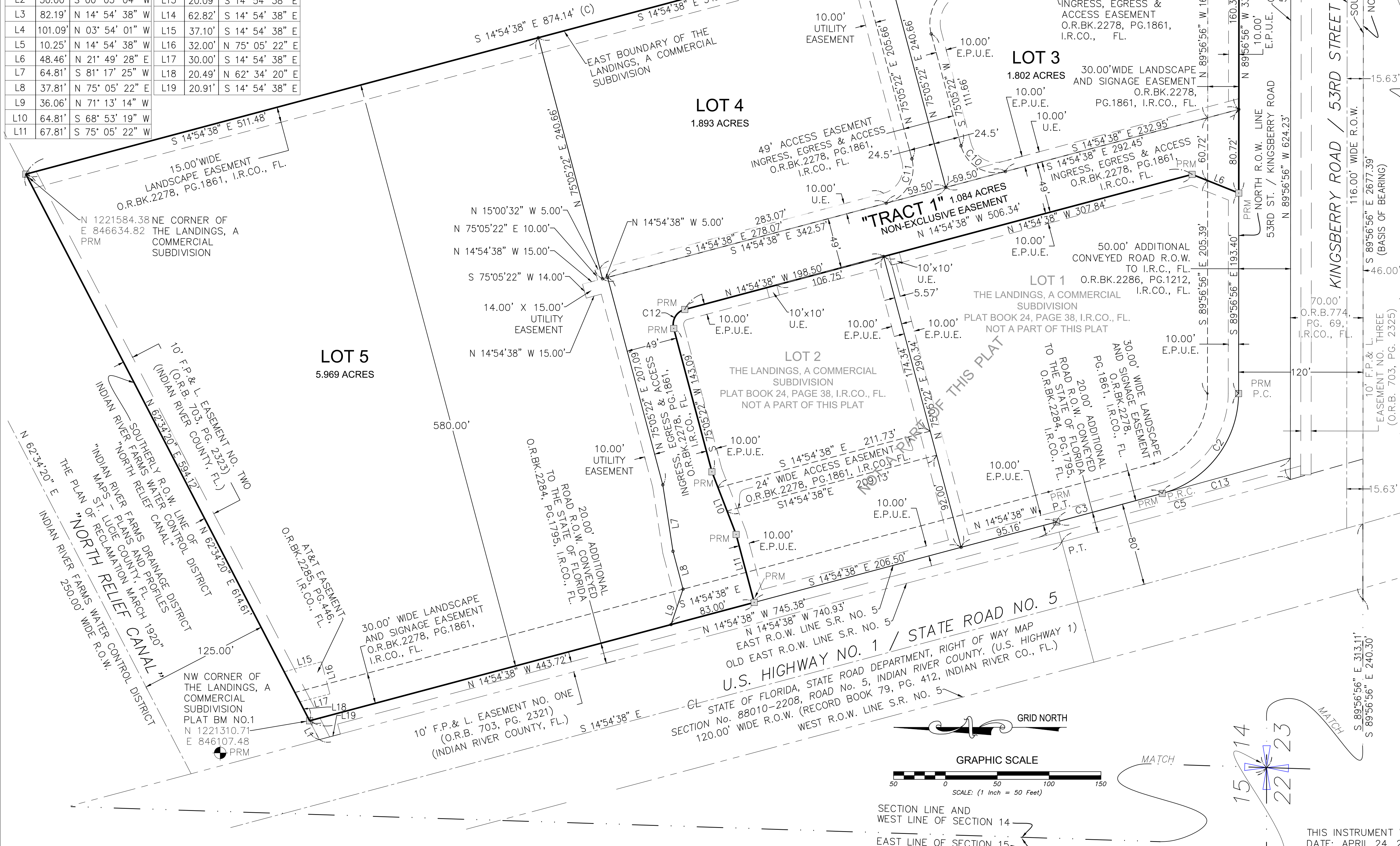
BEING A REPLAT OF PARCEL 'A', LOT 3 AND TRACT 1 OF THE LANDINGS, A COMMERCIAL SUBDIVISION, PLAT BOOK 24, PAGE 38, INDIAN RIVER COUNTY, FLORIDA;
 LYING AND BEING IN PART OF THE SW 1/4 OF SECTION 14, TOWNSHIP 32 SOUTH, RANGE 39 EAST OF INDIAN RIVER COUNTY, FLORIDA.
 COVENANTS RESTRICTIONS, OR RESERVATIONS AFFECTING THE OWNERSHIP OR USE OF THE PROPERTY SHOWN IN THIS PLAT ARE FILED IN OFFICIAL RECORD BOOK 2278, PAGE 1861; OFFICIAL RECORD BOOK 2384, PAGE 27; OFFICIAL RECORD BOOK 2423, PAGE 1958; OFFICIAL RECORD BOOK 2634, PAGE 1564 AND OFFICIAL RECORD BOOK 3138, PAGE 2429 OF THE PUBLIC RECORDS OF INDIAN RIVER COUNTY, FLORIDA

30' "SANITARY SEWER INTERCONNECTION" FROM "THE RESERVE AT GRAND HARBOR" TO BENEFIT "COMMERCIAL PARCEL"

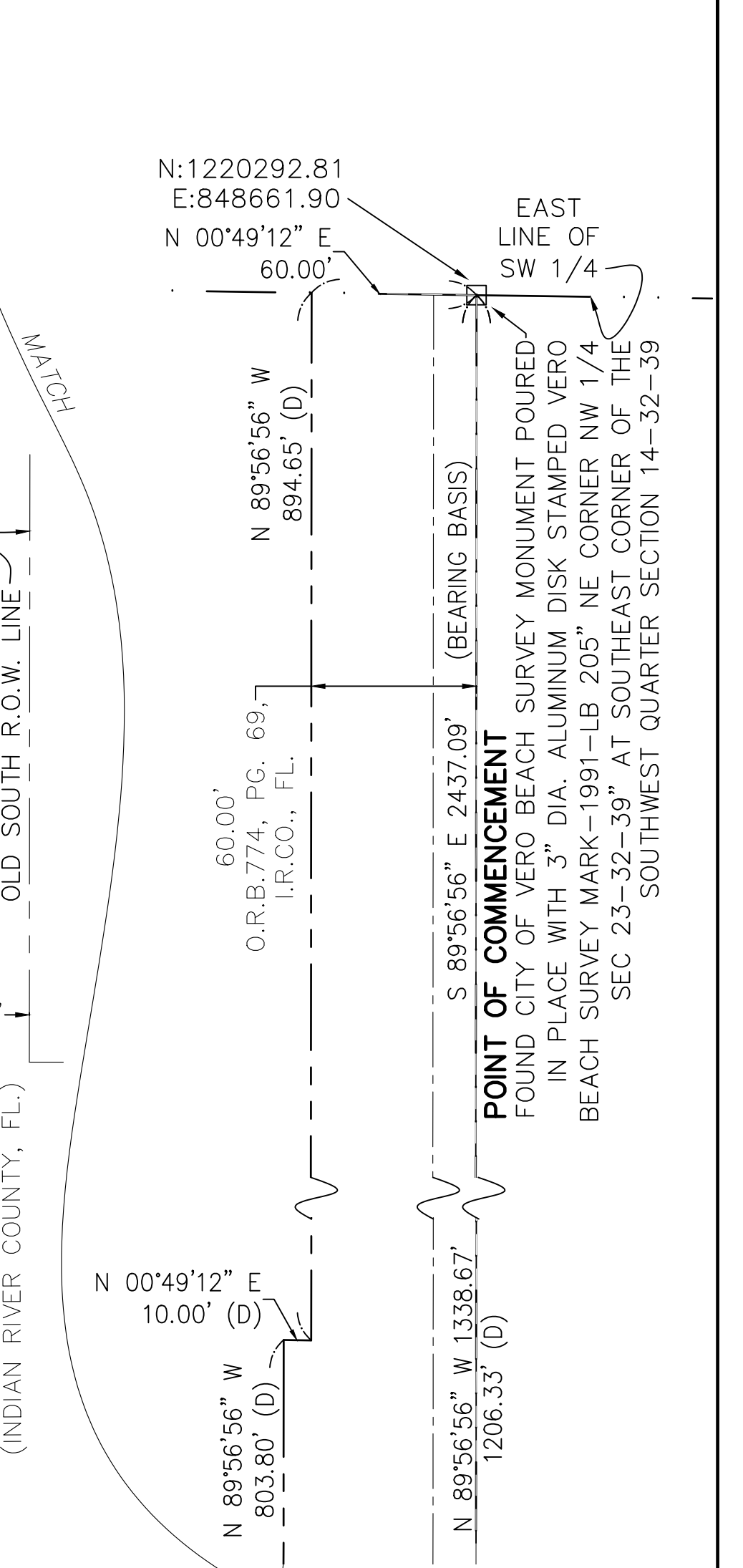
15' "DRAINAGE OUTFALL" FROM "THE RESERVE AT GRAND HARBOR" TO BENEFIT "COMMERCIAL PARCEL"

"THE RESERVE AT GRAND HARBOR PD PHASE 1, PLAT 33" (O.R.B.1429, PG.2268, AND (O.R.B.2235, PG.1464-1486, I.R.CO., FL.)

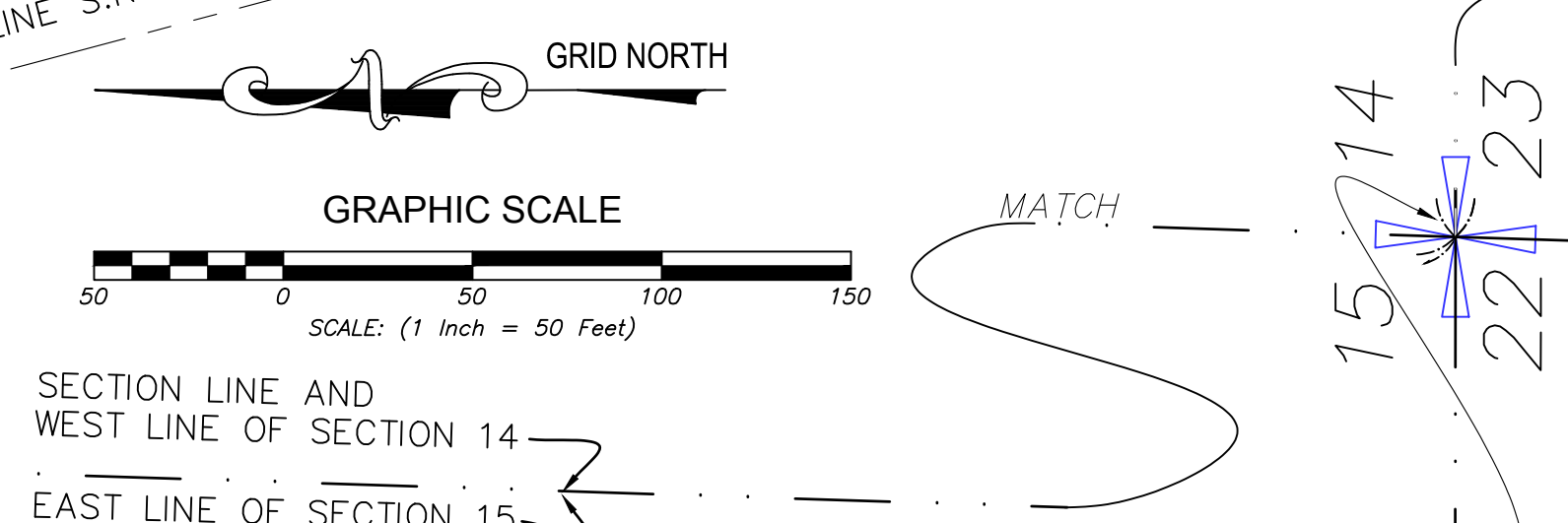
SUBJECT TO "GRANT OF STORMWATER TREATMENT AND ATTENUATION EASEMENT" (O.R.B. 1962, PG. 60 - 68, INDIAN RIVER COUNTY, FL.) (O.R.B. 2235, PG. 1464 - 1486, INDIAN RIVER COUNTY, FL.)



PLAT BOOK: _____
 PAGE: _____
 (CFN): _____
 CLERK'S FILE NUMBER _____



LEGEND:
 CL. = CENTERLINE
 I.R.CO., FL. = INDIAN RIVER COUNTY, FLORIDA
 F.P.& L. = FLORIDA POWER AND LIGHT
 O.R.B. = OFFICIAL RECORDS BOOK
 S.R. = STATE ROAD
 T.B.M. = TEMPORARY BENCHMARK
 B.M. = BENCHMARK
 P.O.C. = POINT OF COMMENCEMENT
 P.O.B. = POINT OF BEGINNING
 P.T. = POINT OF TANGENCY
 P.C. = POINT OF CURVATURE
 P.R.C. = POINT OF REVERSE CURVATURE
 C6 = CURVE LABEL
 L2 = LINE LABEL
 D = DEED CALL
 R.O.W. = RIGHT OF WAY
 U.E. = UTILITY EASEMENT
 PRM = PERMANENT REFERENCE MONUMENT
 4"x4"x24" CONCRETE MONUMENT WITH DISK STAMPED "PRM LB 205"
 ○ = 1/2" X 18" LONG DIAMETER REBAR WITH CAP STAMPED "CARTER ASSOC.LB 205"
 ⊕ = VERTICAL BENCHMARK
 E.P.U.E. = EXISTING PRIVATE UTILITY EASEMENT AS PER OFFICIAL RECORDS BOOK 2278, PG. 1861, I.R.CO., FL. AND NOT SUBJECT TO DEDICATION No.2 OF THE "CERTIFICATE OF DEDICATION" ON SHEET 1 OF 3 OF THIS PLAT.



THIS INSTRUMENT WAS PREPARED BY: DAVID E. LUETHJE, P.S.M.
 DATE: APRIL 24, 2018
CARTER ASSOCIATES, INC.
 CONSULTING ENGINEERS AND LAND SURVEYORS
 1708 21ST STREET 772-562-4191 (TEL)
 VERO BEACH, FLORIDA 32960-3472 772-562-7180 (FAX)

FOUND "MAG" NAIL WITH WASHER STAMPED "LB 6426" AT SW CORNER SECTION 14, T.32S., R.39E. AND COMMON SECTION CORNER
 N:1220295.20
 E:845984.51