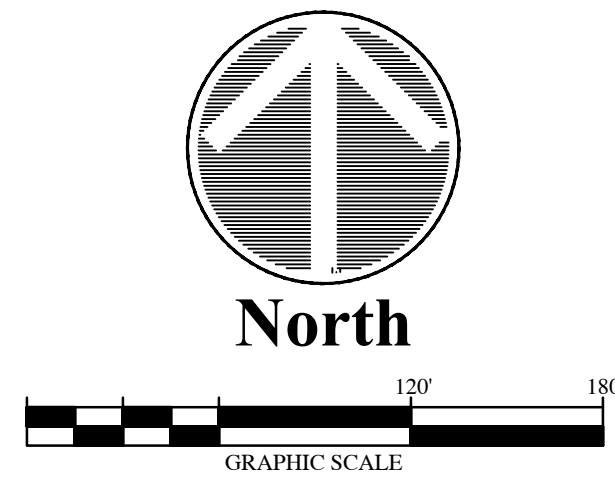
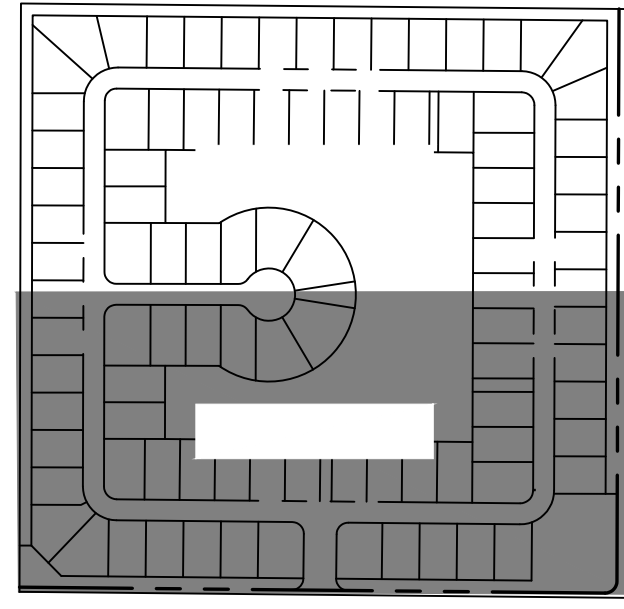


# GRANDE HAMMOCK P.D.

A PORTION OF TRACT 14, SECTION 16, TOWNSHIP 33 SOUTH, RANGE 39 EAST, ACCORDING TO THE LAST GENERAL PLAT OF LANDS OF INDIAN RIVER FARMS COMPANY SUBDIVISION, AS RECORDED IN PLAT BOOK 2, PAGE 25, ST. LUCIE COUNTY, FLORIDA, NOW LYING AND BEING IN INDIAN RIVER COUNTY, FLORIDA,  
 COVENANTS RESTRICTIONS, OR RESERVATION AFFECTING THE OWNERSHIP OR USE OF THE PROPERTY SHOWN IN THIS PLAT ARE FILED UNDER OFFICIAL RECORDS BOOK 3537, PAGE 1167, AS AMENDED BY FIRST AMENDMENT TO THE DECLARATIONS OF COVENANTS, CONDITIONS, RESTRICTIONS AND EASEMENTS RECORDED IN OFFICIAL RECORDS BOOK 3570, PAGE 1525, OF THE PUBLIC RECORDS OF INDIAN RIVER COUNTY, FLORIDA.

PLAT BOOK \_\_\_\_\_  
 PAGE \_\_\_\_\_  
 CFN \_\_\_\_\_  
 CLERK'S FILE NUMBER \_\_\_\_\_



**LEGEND OF SURVEY ABBREVIATIONS**

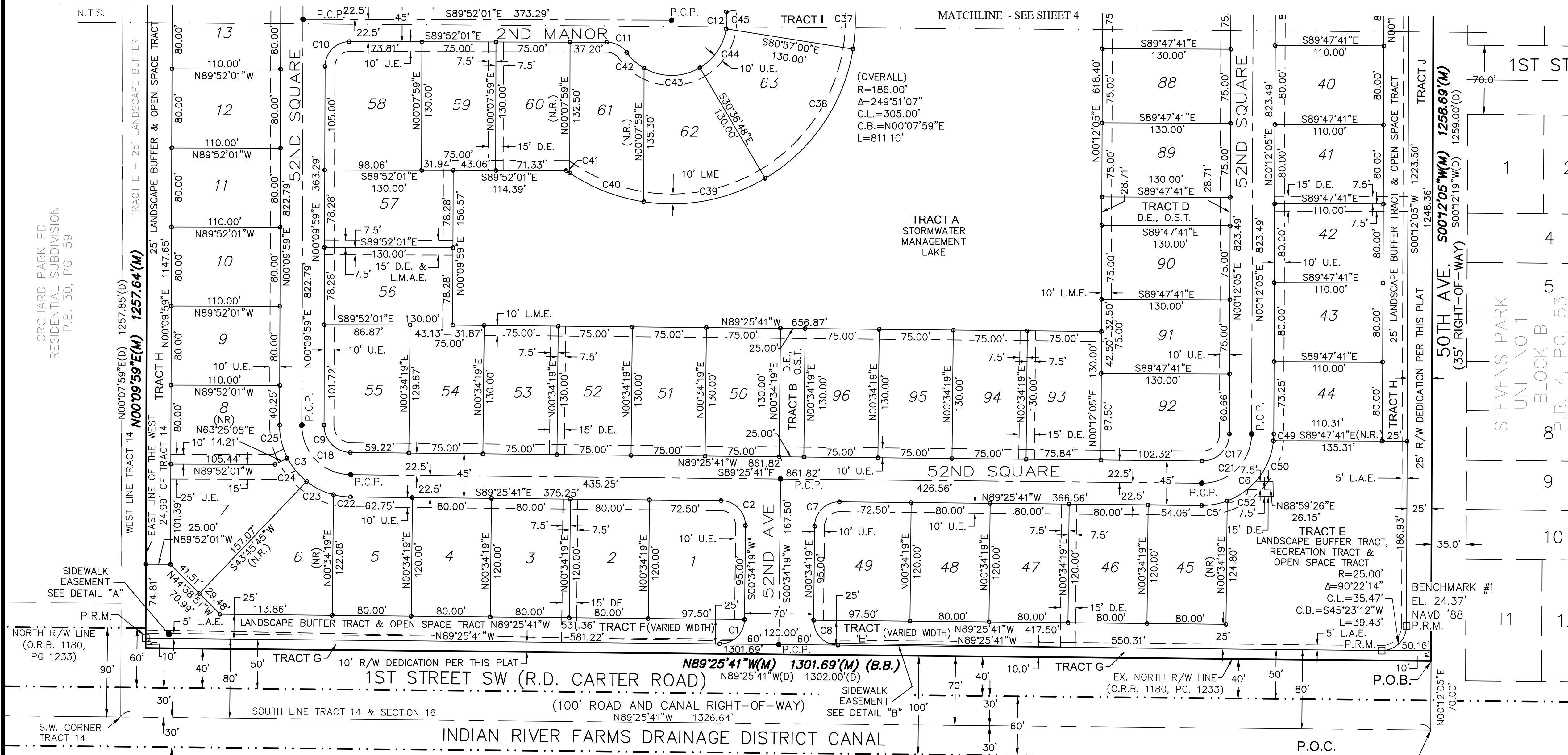
Δ	DELTA ANGLE
AC	ACREAGE
AE	ACCESS EASEMENT
BM	BENCH MARK
CB	CHORD BEARING
CL	CHORD LENGTH
CM	CONCRETE MONUMENT
CR	COUNTY ROAD
D	DEED
DE	DRAINAGE EASEMENT
E	ELEVATION
EA	EASEMENT
END	FOUND
I.P.	IRON PIPE
I.R.	IRON ROD
L	ARC LENGTH
L.A.E.	LIMITED ACCESS EASEMENT
L.M.E.	LAKE MAINTENANCE EASEMENT
L.M.A.E.	LAKE MAINTENANCE ACCESS EASEMENT
(M)	MEASURED
NAVD 88	NORTH AMERICAN VERTICAL DATUM OF 1988
NO	NUMBER
N.R.	NOT RADIAL
N.T.S.	NOT TO SCALE
O.R.B.	OFFICIAL RECORDS BOOK
O.S.T.	OPEN SPACE TRACT
P.B.	PLAT BOOK
P.C.P.	PERMANENT CONTROL POINT
P.I.	POINT OF INTERSECTION
P.O.B.	POINT OF BEGINNING
P.O.C.	POINT OF COMMENCEMENT
P.R.M.	PERMANENT REFERENCE MONUMENT
R	RADIUS
R/W	RIGHT OF WAY
SEC.	SECTION
SQ.FT.	SQUARE FEET
STATE	STATE FOOT
ST.	STREET
TR.	TRACT
TWP.	TOWNSHIP
U.E.	UTILITY EASEMENT

**TRACT DESIGNATION & USE**

TRACT	USE
TRACT A	STORMWATER MANAGEMENT LAKE
TRACT B	DRAINAGE EASEMENT, OPEN SPACE
TRACT C	DRAINAGE EASEMENT, OPEN SPACE
TRACT D	DRAINAGE EASEMENT, OPEN SPACE
TRACT E	LANDSCAPE BUFFER, OPEN SPACE, RECREATION
TRACT F	LANDSCAPE BUFFER, OPEN SPACE
TRACT G	R/W DEDICATION
TRACT H	25' LANDSCAPE BUFFER, OPEN SPACE
TRACT I	LANDSCAPE BUFFER, OPEN SPACE
TRACT J	R/W DEDICATION

**NOTICE:**

- - DENOTES 18" LONG #5 REBAR WITH CAP STAMPED "PRM KMA LB 8351"
- - DENOTES MAGNETIC NAIL AND DISK STAMPED "PCP LB 8351"
- - DENOTES 18" LONG #5 REBAR WITH CAP STAMPED "KMA 8351"



**CURVE TABLE**

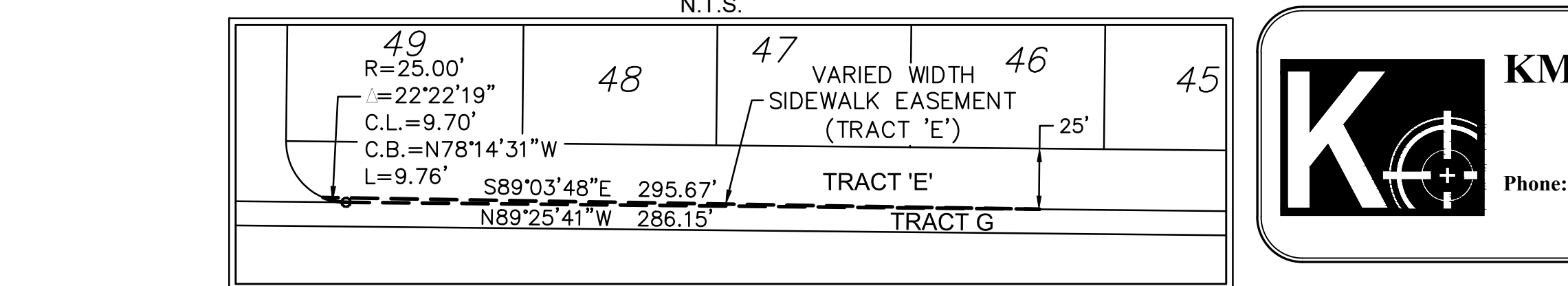
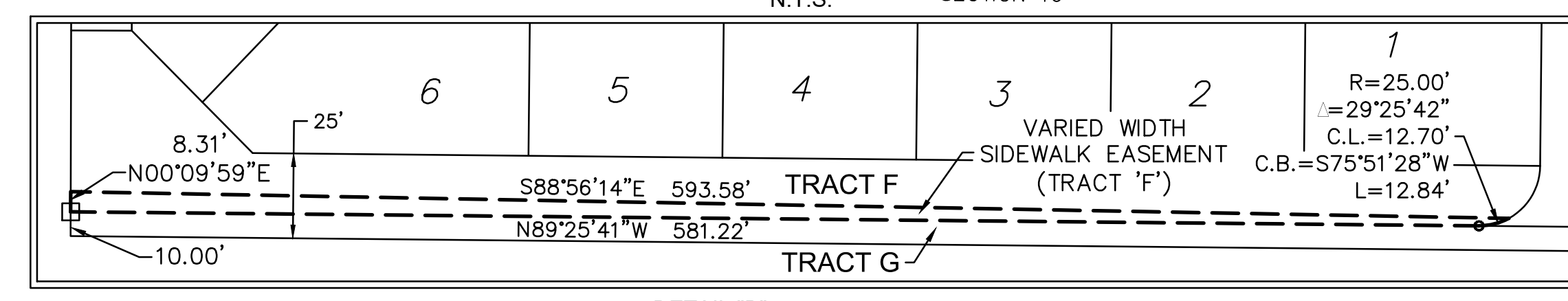
CURVE #	RADIUS	DELTA	CHORD BEARING	CHORD	LENGTH
C1	25.00'	090°00'00"	N45° 34' 19"E	35.36'	39.27'
C2	25.00'	090°00'00"	N44° 25' 41"W	35.36'	39.27'
C3	72.50'	089°35'40"	S44° 37' 51"E	102.17'	113.37'
C6	72.50'	090°22'14"	N45° 23' 12"E	102.86'	114.35'
C7	25.00'	090°00'00"	S45° 34' 19"W	35.36'	39.27'
C8	25.00'	090°00'00"	S44° 25' 41"W	35.36'	39.27'
C9	27.50'	089°35'40"	S44° 37' 51"E	38.75'	43.00'
C10	25.00'	089°57'59"	S45° 08' 59"W	35.35'	39.26'
C11	25.00'	054°05'48"	N62° 49' 08"W	22.74'	23.60'
C12	56.00'	288°11'36"	N00° 07' 59"E	65.68'	281.68'
C17	27.50'	090°22'14"	N45° 23' 12"E	39.02'	43.37'
C18	50.00'	089°35'40"	S44° 37' 51"E	70.46'	78.19'
C21	50.00'	090°22'14"	N45° 23' 12"E	70.94'	78.86'

**CURVE TABLE**

CURVE #	RADIUS	DELTA	CHORD BEARING	CHORD	LENGTH
C22	72.50'	013°45'47"	S82° 32' 48"E	17.37'	17.42'
C23	72.50'	024°07'44"	S63° 36' 02"E	30.31'	30.53'
C24	72.50'	024°18'30"	S39° 22' 54"E	30.53'	30.76'
C25	72.50'	027°23'38"	S13° 31' 50"E	34.33'	34.66'
C37	186.00'	017°50'03"	N00° 07' 59"E	57.66'	57.90'
C38	186.00'	050°20'12"	N34° 13' 06"E	158.20'	163.41'
C39	186.00'	039°20'48"	N79° 03' 36"E	125.24'	127.73'
C40	186.00'	024°57'24"	S68° 47' 17"E	80.38'	81.02'
C41	186.00'	001°22'07"	S55° 37' 32"E	4.44'	4.44'
C42	56.00'	024°18'52"	S47° 55' 40"E	23.59'	23.76'
C43	56.00'	060°31'42"	N89° 39' 03"E	56.45'	59.16'
C44	56.00'	050°20'12"	N34° 13' 06"E	47.63'	49.20'
C45	56.00'	017°50'03"	N00° 07' 59"E	17.36'	17.43'

**CURVE TABLE**

CURVE #	RADIUS	DELTA	CHORD BEARING	CHORD	LENGTH
C49	72.50'	005°20'28"	N02° 52' 19"E	6.76'	6.76'
C50	72.50'	064°03'49"	N37° 34' 28"E	76.91'	81.06'
C51	72.50'	020°57'57"	N80° 05' 21"E	26.38'	26.53'
C52	72.50'	018°35'45"	N60° 18' 30"E	23.43'	23.53'



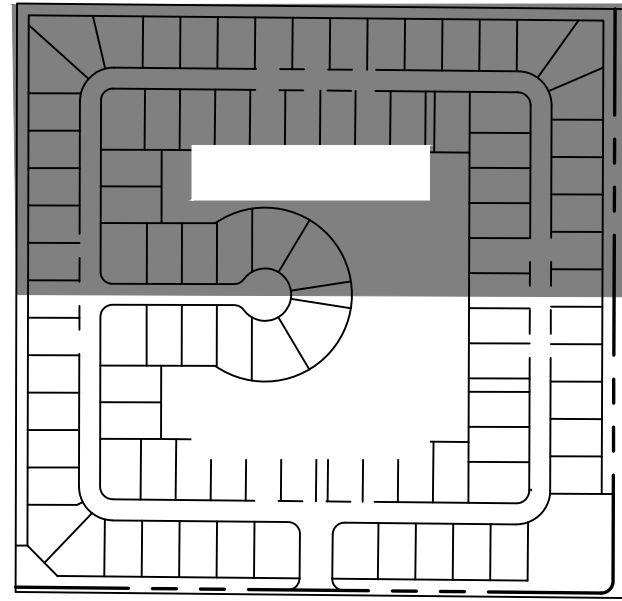
THIS INSTRUMENT PREPARED BY:  
 WILLIAM E. HAYHURST, P.S.M.  
 REGISTRATION NO. 4416  
 PREPARATION DATE: JUNE 2021

**KMA Engineering & Surveying, LLC**  
 Consulting Engineers & Surveyors  
 2345 14th St, Suite 3 Vero Beach, FL 32960  
 Phone: (772) 569-6680 Fax: (772) 770-3446 E-Mail: survey@kmafl.com  
 Certificate of Authorization Number: L.B.8351

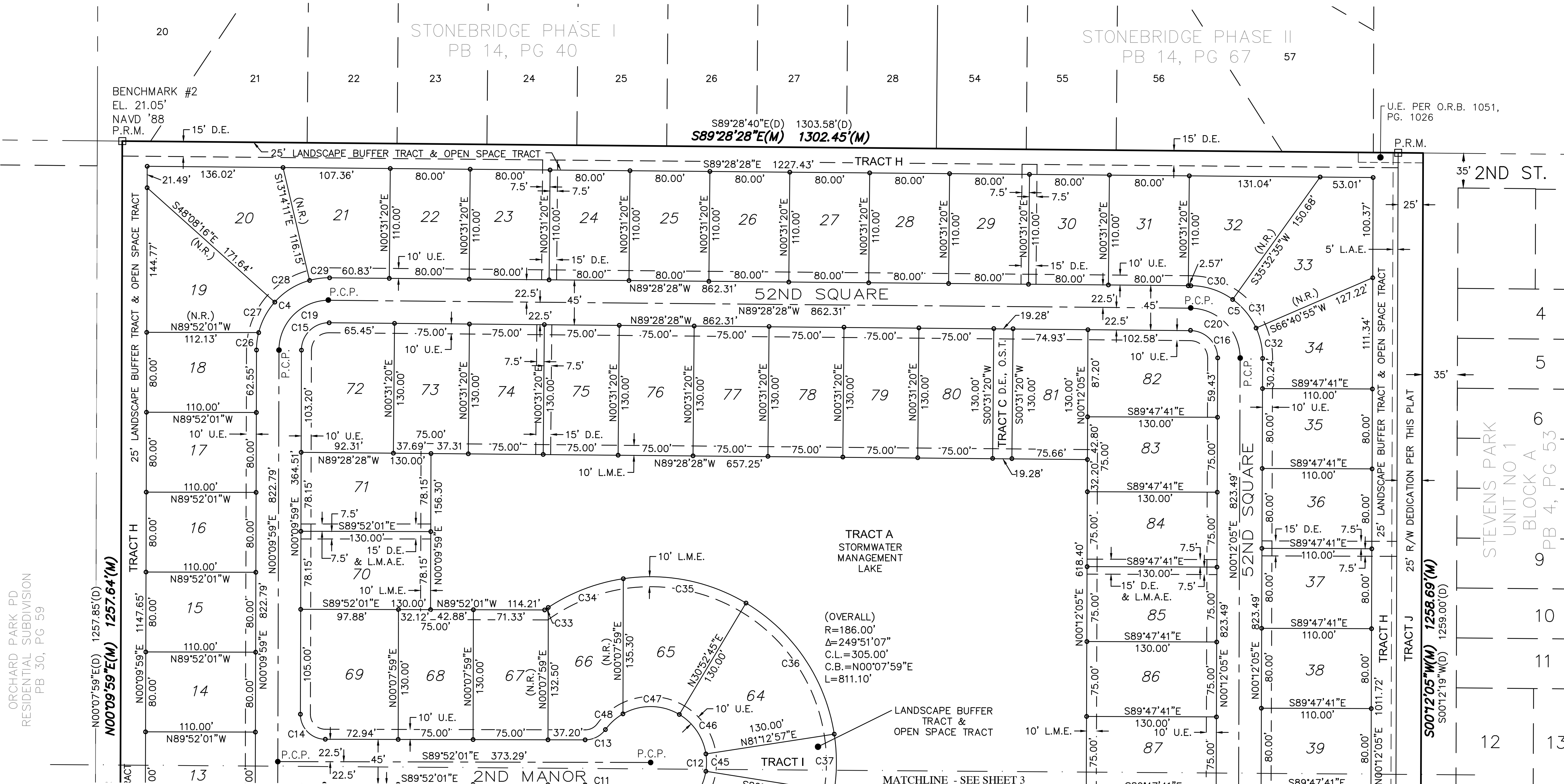
# GRANDE HAMMOCK P.D.

A PORTION OF TRACT 14, SECTION 16, TOWNSHIP 33 SOUTH, RANGE 39 EAST, ACCORDING TO THE LAST GENERAL PLAT OF LANDS OF INDIAN RIVER FARMS COMPANY SUBDIVISION, AS RECORDED IN PLAT BOOK 2, PAGE 25, ST. LUCIE COUNTY, FLORIDA, NOW LYING AND BEING IN INDIAN RIVER COUNTY, FLORIDA,  
COVENANTS RESTRICTIONS, OR RESERVATION AFFECTING THE OWNERSHIP OR USE OF THE PROPERTY SHOWN IN THIS PLAT ARE FILED UNDER OFFICIAL RECORDS BOOK 3537, PAGE 1167, AS AMENDED BY FIRST AMENDMENT TO THE DECLARATIONS OF COVENANTS, CONDITIONS, RESTRICTIONS AND EASEMENTS RECORDED IN OFFICIAL RECORDS BOOK 3570, PAGE 1525, OF THE PUBLIC RECORDS OF INDIAN RIVER COUNTY, FLORIDA.

PLAT BOOK \_\_\_\_\_  
PAGE \_\_\_\_\_  
CFN \_\_\_\_\_  
CLERK'S FILE NUMBER \_\_\_\_\_



N.T.S.



**LEGEND OF SURVEY ABBREVIATIONS**

- Δ DELTA ANGLE
- Ac. ACREAGE
- A.E. ACCESS EASEMENT
- B.E. BEARING BASE
- B.M. BENCH MARK
- C.B. CHORD BEARING
- C.L. CHORD LENGTH
- C.M. CONCRETE MONUMENT
- C.R. COUNTY ROAD
- D.D. DEED
- D.E. DRAINAGE EASEMENT
- ELEV. ELEVATION
- EASE. EASEMENT
- FND. FOUND
- I.P. IRON PIPE
- I.R. IRON ROD
- L. ARC LENGTH
- L.A.E. LIMITED ACCESS EASEMENT
- L.M.E. LAKE MAINTENANCE EASEMENT
- L.M.A.E. LAKE MAINTENANCE ACCESS EASEMENT
- (M) MEASURED
- NAVD 88 NORTH AMERICAN VERTICAL DATUM OF 1988
- N# NUMBER
- N.R. NOT RADIAL
- N.T. NOT TO SCALE
- O.R.B. OFFICIAL RECORDS BOOK
- O.S.T. OPEN SPACE TRACT
- PAGE PAGE
- P.B. PLAT BOOK
- P.C.P. PERMANENT CONTROL POINT
- P.I. POINT OF INTERSECTION
- P.O.B. POINT OF BEGINNING
- P.O.C. POINT OF COMMENCEMENT
- P.R.M. PERMANENT REFERENCE MONUMENT
- R. RADIUS
- R/W RIGHT OF WAY
- SEC. SECTION
- S.F. SQUARE FEET
- S.R. STATE ROAD
- ST. STREET
- TWP. TOWNSHIP
- U.E. UTILITY EASEMENT

**TRACT DESIGNATION & USE**

TRACT	USE
TRACT A	STORMWATER MANAGEMENT LAKE
TRACT B	DRAINAGE EASEMENT, OPEN SPACE
TRACT C	DRAINAGE EASEMENT, OPEN SPACE
TRACT D	DRAINAGE EASEMENT, OPEN SPACE
TRACT E	LANDSCAPE BUFFER, OPEN SPACE, RECREATION
TRACT F	LANDSCAPE BUFFER, OPEN SPACE
TRACT G	R/W DEDICATION
TRACT H	25' LANDSCAPE BUFFER, OPEN SPACE
TRACT I	LANDSCAPE BUFFER, OPEN SPACE
TRACT J	R/W DEDICATION

ORCHARD PARK PD  
RESIDENTIAL SUBDIVISION  
PB 30, PG 59

**CURVE TABLE**

CURVE #	RADIUS	DELTA	CHORD BEARING	CHORD	LENGTH
C4	72.50'	090°21'33"	S45° 20' 45"W	102.85'	114.34'
C5	72.50'	089°40'33"	N44° 38' 12"W	102.24'	113.47'
C12	56.00'	288°11'36"	N00° 07' 59"E	65.68'	281.68'
C13	25.00'	054°05'49"	N63° 05' 05"E	22.74'	23.60'
C14	25.00'	090°02'01"	S44° 51' 01"E	35.37'	39.28'
C15	27.50'	090°21'33"	S45° 20' 45"W	39.01'	43.37'
C16	27.50'	089°40'33"	N44° 38' 12"W	38.78'	43.04'
C19	50.00'	090°21'33"	S45° 20' 45"W	70.93'	78.85'
C20	50.00'	089°40'33"	N44° 38' 12"W	70.51'	78.26'
C26	72.50'	013°55'54"	S07° 07' 56"W	17.59'	17.63'

**CURVE TABLE**

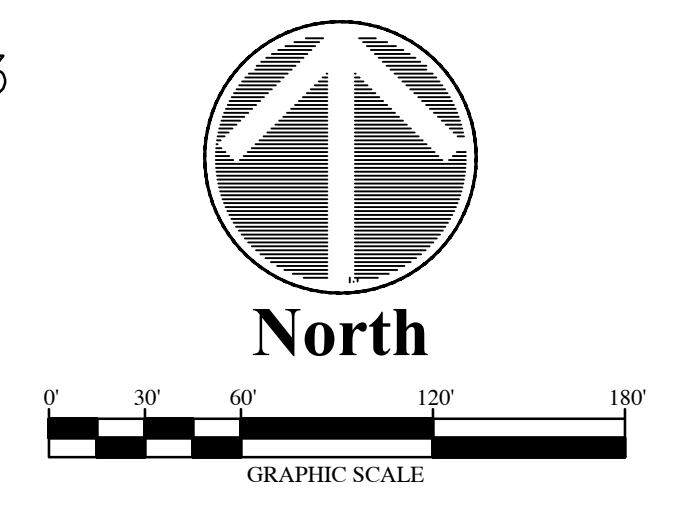
CURVE #	RADIUS	DELTA	CHORD BEARING	CHORD	LENGTH
C27	72.50'	027°31'07"	S27° 51' 26"W	34.49'	34.82'
C28	72.50'	032°53'56"	S58° 03' 58"W	41.06'	41.63'
C29	72.50'	016°00'36"	S82° 31' 14"W	20.19'	20.26'
C30	72.50'	035°24'01"	N71° 46' 28"W	44.08'	44.79'
C31	72.50'	029°32'44"	N39° 18' 06"W	36.97'	37.39'
C32	72.50'	024°43'48"	N12° 09' 49"W	31.05'	31.29'
C33	186.00'	001°22'07"	S55° 53' 29"W	4.44'	4.44'
C34	186.00'	024°57'24"	S69° 03' 14"W	80.38'	81.02'
C35	186.00'	039°20'48"	N78° 47' 39"W	125.24'	127.73'
C36	186.00'	050°20'12"	N33° 57' 09"W	158.20'	163.41'

**CURVE TABLE**

CURVE #	RADIUS	DELTA	CHORD BEARING	CHORD	LENGTH
C37	186.00'	017°50'03"	N00° 07' 59"E	57.66'	57.90'
C45	56.00'	017°50'03"	N00° 07' 59"E	17.36'	17.43'
C46	56.00'	050°20'12"	N33° 57' 09"W	47.63'	49.20'
C47	56.00'	060°31'42"	N89° 23' 06"W	56.45'	59.16'
C48	56.00'	024°18'52"	S48° 11' 37"W	23.59'	23.76'

(OVERALL)  
R=186.00'  
Δ=249°51'07"  
C.L.=305.00'  
C.B.=N00°07'59"E  
L=811.10'

NOTICE:  
 □ - DENOTES 18" LONG #5 REBAR WITH CAP STAMPED "PRM KMA LB 8351"  
 ● - DENOTES MAGNETIC NAIL AND DISK STAMPED "PCP LB 8351"  
 ○ - DENOTES 18" LONG #5 REBAR WITH CAP STAMPED "KMA 8351"



**KMA Engineering & Surveying, LLC**  
 Consulting Engineers & Surveyors  
 2345 14th St, Suite 3 Vero Beach, FL 32960  
 Phone: (772) 569-6680 Fax: (772) 770-3446 E-Mail: survey@kmafl.com  
 Certificate of Authorization Number: L.B.8351

THIS INSTRUMENT PREPARED BY:  
 WILLIAM E. HAYHURST, P.S.M.  
 REGISTRATION NO. 4416  
 PREPARATION DATE: JUNE 2021