

PANERA - INDIAN RIVER SQUARE

A REPLAT OF A PORTION OF TRACT 8, SECTION 5, TOWNSHIP 33 SOUTH, RANGE 39 EAST, ACCORDING TO THE LAST GENERAL PLAT OF LANDS OF INDIAN RIVER FARMS COMPANY, AS RECORDED IN PLAT BOOK 2, PAGE 25, OF THE PUBLIC RECORDS OF ST. LUCIE COUNTY, FLORIDA, SAID LAND NOW LYING AND BEING IN INDIAN RIVER COUNTY, FLORIDA.

PLAT BOOK _____

PAGE _____

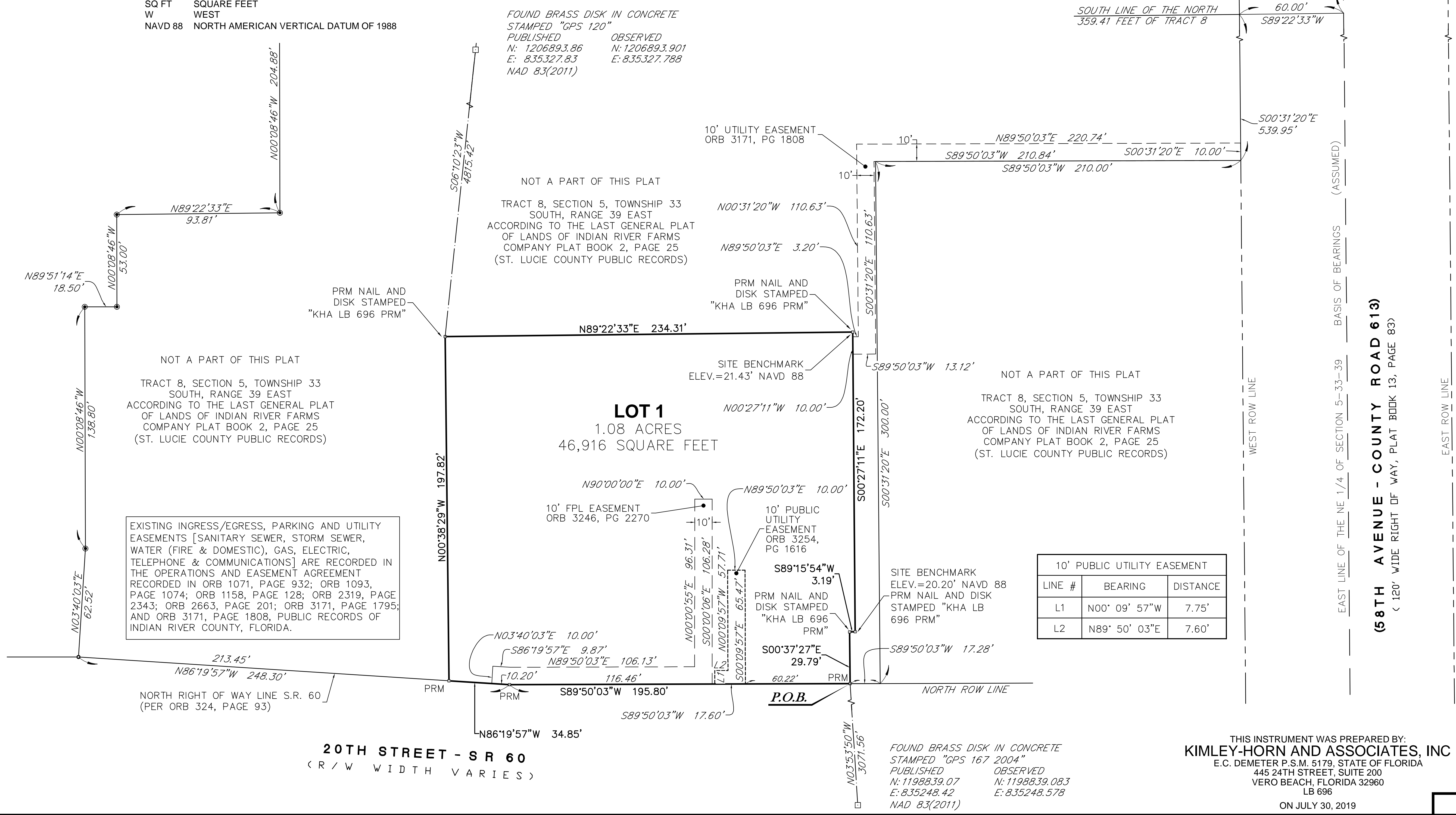
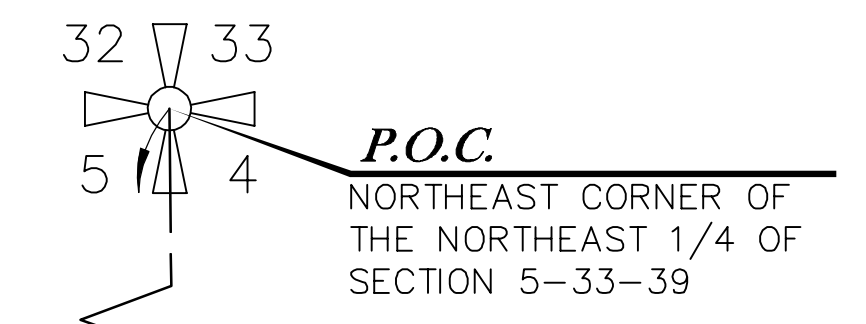
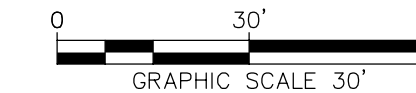
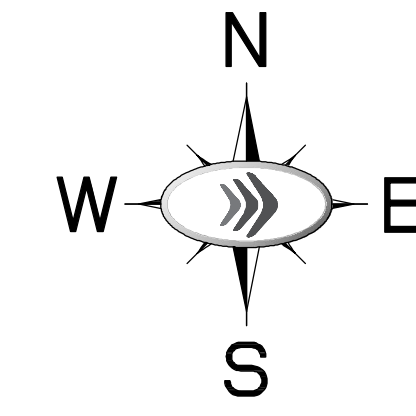
CLERK'S FILE NUMBER (CFN) _____

ABBREVIATIONS

| | |
|---------|---------------------------------------|
| C/I | COMMERCIAL / INDUSTRIAL |
| CG | GENERAL COMMERCIAL DISTRICT |
| CMD | CONCRETE MONUMENT & DISK |
| E | EAST |
| FPL | FLORIDA POWER & LIGHT COMPANY |
| IR | IRON ROD |
| IRC | IRON ROD AND CAP (AS NOTED) |
| L | LENGTH |
| LB | LICENSED BUSINESS |
| N | NORTH |
| ORB | OFFICIAL RECORD BOOK |
| PB | PLAT BOOK |
| PG | PAGE |
| PK | PARKER KALON |
| PLS | PROFESSIONAL LAND SURVEYOR |
| P.O.B. | POINT OF BEGINNING |
| P.O.C. | POINT OF COMMENCEMENT |
| PRM | PERMANENT REFERENCE MONUMENT AS NOTED |
| PSM | PROFESSIONAL SURVEYOR AND MAPPER |
| ROW | RIGHT-OF-WAY |
| S | SOUTH |
| SEC | SECTION |
| SQ FT | SQUARE FEET |
| W | WEST |
| NAVD 88 | NORTH AMERICAN VERTICAL DATUM OF 1988 |

LEGEND OF SYMBOLS

□ = PRM 4"x4" CONCRETE MONUMENT WITH DISC STAMPED "KHA LB 696 PRM" OR 5/8" IRON ROD WITH ALUMINIUM ALLOY CAP STAMPED "KHA LB 696 PRM" OR AS NOTED.



EXISTING INGRESS/EGRESS, PARKING AND UTILITY EASEMENTS [SANITARY SEWER, STORM SEWER, WATER (FIRE & DOMESTIC), GAS, ELECTRIC, TELEPHONE & COMMUNICATIONS] ARE RECORDED IN THE OPERATIONS AND EASEMENT AGREEMENT RECORDED IN ORB 1071, PAGE 932; ORB 1093, PAGE 1074; ORB 1158, PAGE 128; ORB 2319, PAGE 2343; ORB 2663, PAGE 201; ORB 3171, PAGE 1795; AND ORB 3171, PAGE 1808, PUBLIC RECORDS OF INDIAN RIVER COUNTY, FLORIDA.

| 10' PUBLIC UTILITY EASEMENT | | |
|-----------------------------|---------------|----------|
| LINE # | BEARING | DISTANCE |
| L1 | N00° 09' 57"W | 7.75' |
| L2 | N89° 50' 03"E | 7.60' |

FOUND BRASS DISK IN CONCRETE STAMPED "GPS 167 2004"
 PUBLISHED OBSERVED
 N: 1198839.07 N: 1198839.083
 E: 835248.42 E: 835248.578
 NAD 83(2011)

THIS INSTRUMENT WAS PREPARED BY:
KIMLEY-HORN AND ASSOCIATES, INC
 E.C. DEMETER P.S.M. 5179, STATE OF FLORIDA
 445 24TH STREET, SUITE 200
 VERO BEACH, FLORIDA 32960
 LB 696

ON JULY 30, 2019