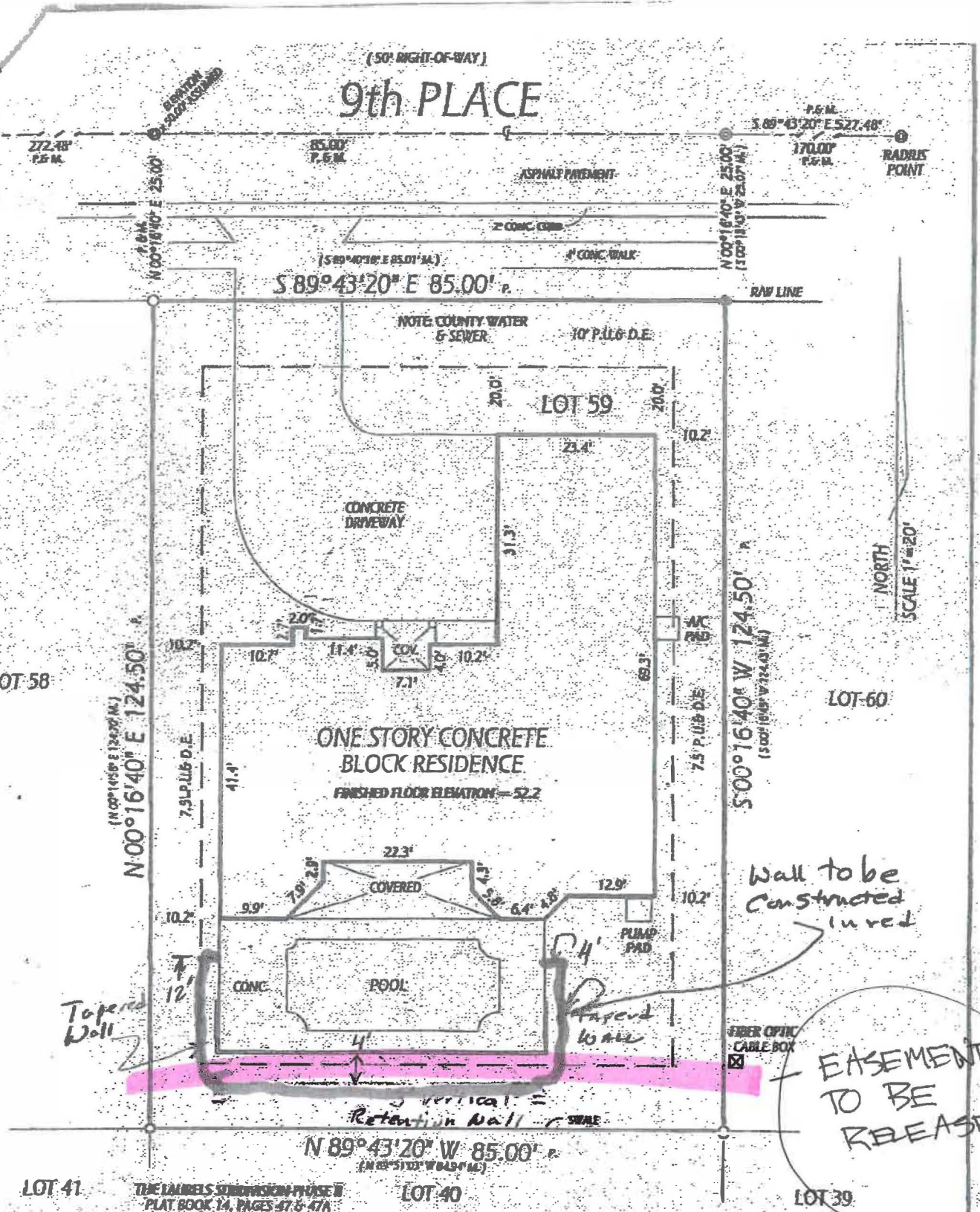


(50' RIGHT-OF-WAY)  
**9th PLACE**

**39TH AVENUE**



NORTH  
SCALE 1" = 20'

**BOUNDARY SURVEY**

LEGAL DESCRIPTION:  
LOT 59, THE LAURELS SUBDIVISION PHASE III, ACCORDING TO THE PLAT THEREOF AS RECORDED IN PLAT BOOK 15 PAGE 42 AND 42A OF THE PUBLIC RECORDS OF INDIAN RIVER COUNTY, FLORIDA.

SURVEYOR'S NOTES:  
1. BEARINGS SHOWN ARE BASED ON THE CENTERLINE OF 9th PLACE AS S 89° 43' 20" E AS PER PLAT.

2. NO INSTRUMENT OF RECORD REFLECTING EASEMENTS, RIGHTS OF WAY AND/OR OWNERSHIP WERE FURNISHED TO THIS SURVEYOR EXCEPT AS SHOWN. NO TITLE OPINION IS EXPRESSED OR IMPLIED.

CERTIFIED TO:  
GERALD DEMKO and ANN E. DEMKO, his wife  
SUNTRUST BANK, SOUTH FLORIDA NATIONAL ASSOCIATION, its successors and/or its assigns  
ATTORNEYS: TITLE INSURANCE FUND, INC. and COLLINS, BROWN, CALDWELL, BARKETT & GARAVAGLIA, CHARTERED MGB CONSTRUCTION, INC.

LEGEND:  
⊙ - SET 5/8" IRON REBAR WITH PLASTIC CAP STAMPED "PLS 4896"  
⊖ - POLY 1/2" IRON PERM WITH CAP STAMPED "CAPTED E 4896"

**EASEMENT TO BE RELEASED**

\* Highlight Easement to be released

# THE LAURELS SUBDIVISION - PHASE III

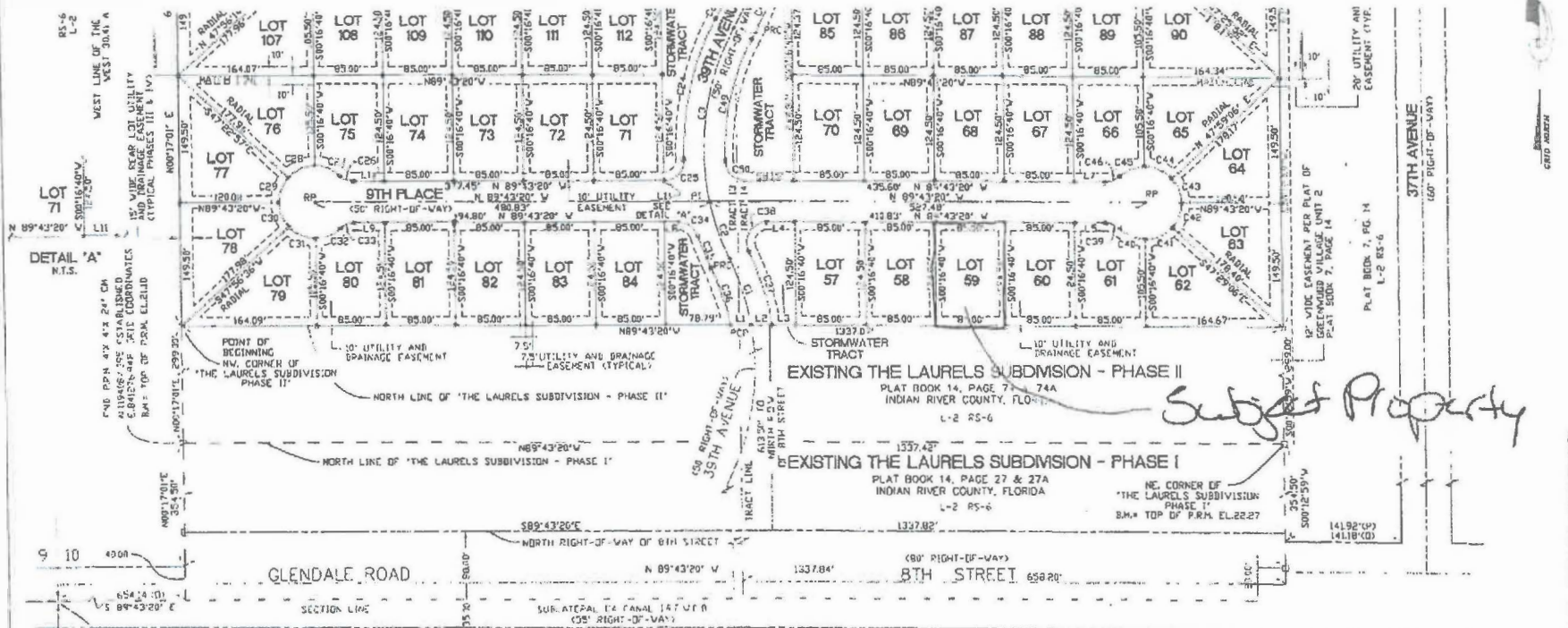
BEING A REPLAT OF PORTION OF TRACTS 13 AND 14, SECTION 10,  
TOWNSHIP 33 SOUTH, RANGE 39 EAST, INDIAN RIVER FARMS COMPANY  
SUBDIVISION, PLAT BOOK 2, PAGE 25. ST. LUCIE COUNTY, FLORIDA.

PLAT BOOK 15  
PAGE 42A  
DOCKET No. 1073433

CURVE TABLE				
CURVE	LENGTH	RADIUS	CHORD BEARING & DIST.	DELTA
C1	83.45	300.00	N17°13'16"W 83.18	15°56'16"
C2	74.13	300.00	S18°06'44"E 73.94	14°09'28"
C3	212.05	300.00	S09°12'58"W 207.66	49°29'55"
C4	173.77	325.00	S14°06'56"W 171.71	30°38'00"
C5	39.90	25.00	N44°33'15"E 35.88	91°26'50"
C6	19.01	25.00	S67°56'30"E 18.55	43°33'41"
C7	33.45	44.00	N67°56'30"W 32.65	43°33'41"
C8	36.60	44.00	S66°26'51"W 35.55	47°39'37"
C9	32.51	44.00	S21°26'51"W 31.78	42°20'23"
C10	32.51	44.00	S20°53'27"E 31.78	42°20'04"
C11	36.60	44.00	S45°53'22"E 35.56	47°39'56"
C12	33.45	44.00	N68°29'39"E 32.65	42°14'24"
C13	19.01	25.00	S68°29'39"W 18.55	42°13'24"
C14	31.36	85.00	N53°46'52"W 29.35	71°52'36"
C15	41.78	325.00	S21°30'57"E 41.67	07°21'05"

CURVE TABLE				
CURVE	LENGTH	RADIUS	CHORD BEARING & DIST.	DELTA
C16	78.29	275.00	N17°39'37"W 72.09	19°02'44"
C17	93.23	325.00	N16°43'55"W 92.91	16°25'08"
C18	94.28	25.00	S32°39'30"W 42.22	115°13'39"
C19	19.01	25.00	N67°56'30"W 18.55	43°33'41"
C20	33.45	44.00	S67°56'30"E 32.65	43°33'41"
C21	36.60	44.00	N66°23'47"E 35.63	47°45'46"
C22	32.44	44.00	N21°23'47"E 31.71	42°14'14"
C23	32.44	44.00	N21°52'07"W 31.75	42°17'34"
C24	36.64	44.00	N65°58'07"W 35.59	47°42'26"
C25	33.45	44.00	S68°29'50"W 32.65	43°33'41"
C26	19.01	25.00	N64°29'50"E 18.55	43°33'41"
C27	2.35	25.00	S87°21'20"W 2.55	05°50'41"
C28	69.62	325.00	N23°22'52"E 68.89	12°10'06"
C29	149.82	275.00	S15°13'30"W 147.97	31°12'38"
C30	38.39	25.00	S45°44'08"E 34.72	87°58'25"

LINE TABLE		
LINE	LENGTH	BEARING
L1	25.38	N89°43'20"W
L2	25.32	N89°43'20"W
L3	28.82	N89°43'20"W
L4	33.50	N89°43'20"W
L5	37.45	N89°43'20"W
L6	37.45	N89°43'20"W
L7	37.45	N89°43'20"W
L8	17.35	N89°43'20"W
L9	37.45	N89°43'20"W
L10	37.45	N89°43'20"W
L11	0.11	N89°43'20"W



POINT OF COMMENCEMENT: SUBDIVISION LIEBNER OF SECTION 10 TOWNSHIP 33 SOUTH RANGE 39 EAST, INDIAN RIVER COUNTY, FLORIDA

NOTE: ESTABLISHED GRID COORDINATE AT THE FOUND P.M. AT THE NW CORNER OF THE LAURELS SITE. PART I WAS OBTAINED AND PART II FROM TOWNSHIP 33 SOUTH RANGE 39 EAST, INDIAN RIVER COUNTY, FLORIDA. ASSOC. INC.

CITY OF VERO BEACH SURVEY MARKER GPS 1034 / TBM 2-51. 3" DIA. ALUMINUM DISC IN CONCRETE 3" BELOW GRADE. N1193645734 PUBLISHED COORDINATES: E:040591398 ELEV: 22.58 NGVD

CITY OF VERO BEACH SURVEY MARKER GPS: 1032 / TBM 2-50. 3" DIA. ALUMINUM DISC IN CONCRETE 3" BELOW GRADE. N1193222222 PUBLISHED COORDINATES: E:035264459 ELEV: 23.75 NGVD

CARTER ASSOCIATES, INC.  
CONSULTING ENGINEERS AND LAND SURVEYORS  
1708 21st STREET, VERO BEACH, FLORIDA 32909  
TEL: (888) 562-4191 FAX: (888) 562-7186  
THIS INSTRUMENT WAS PREPARED BY FRANK S. CUCCURESE P.E.M.  
DATE: JUNE 5, 1998