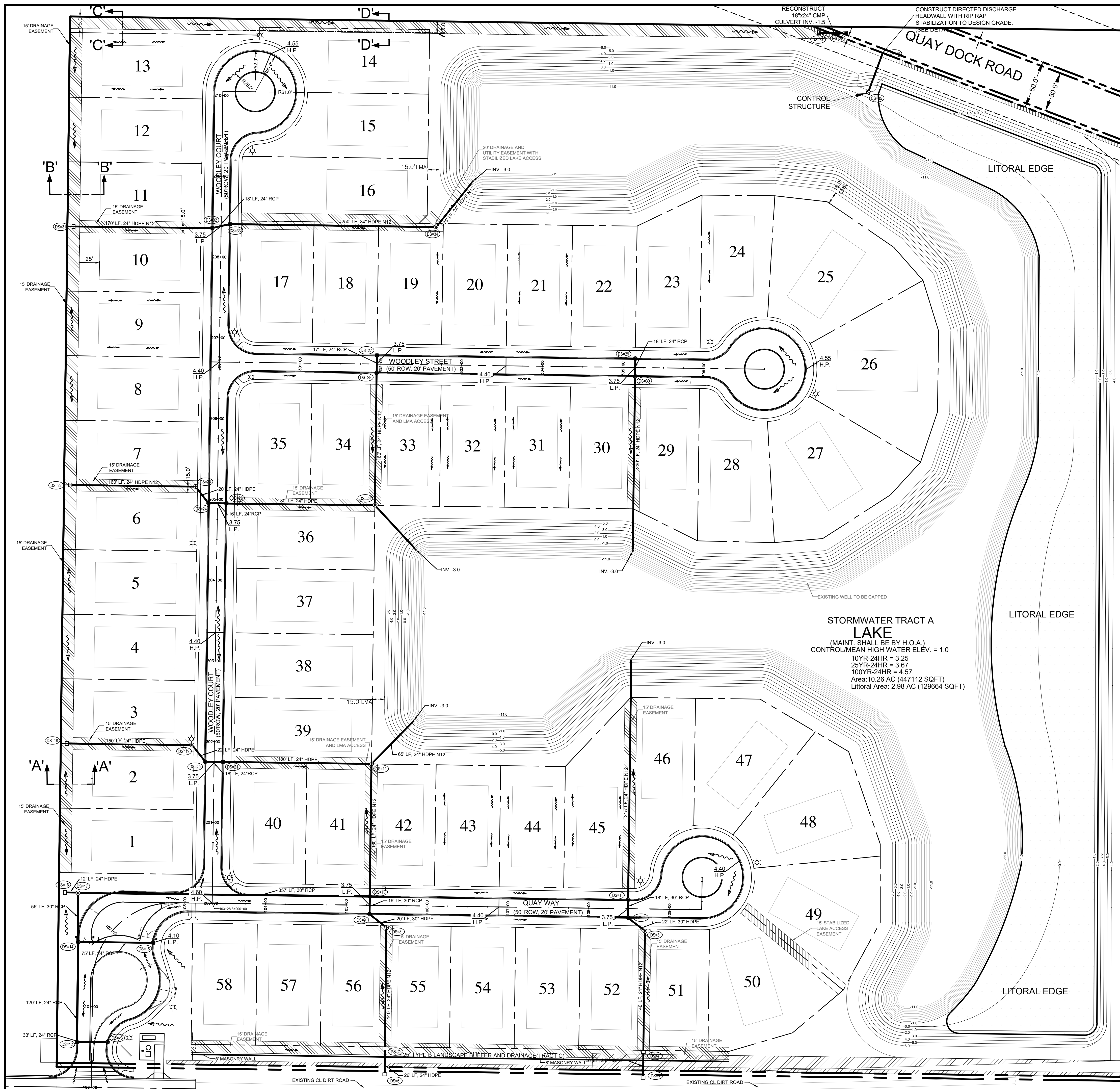
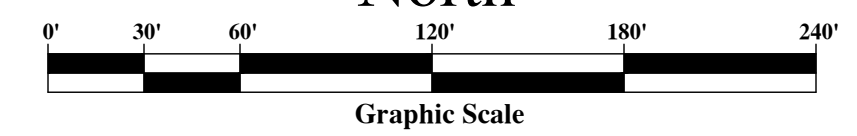
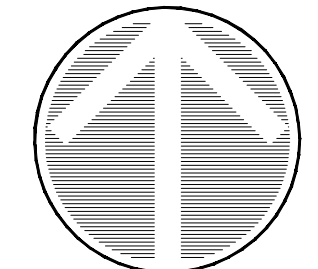
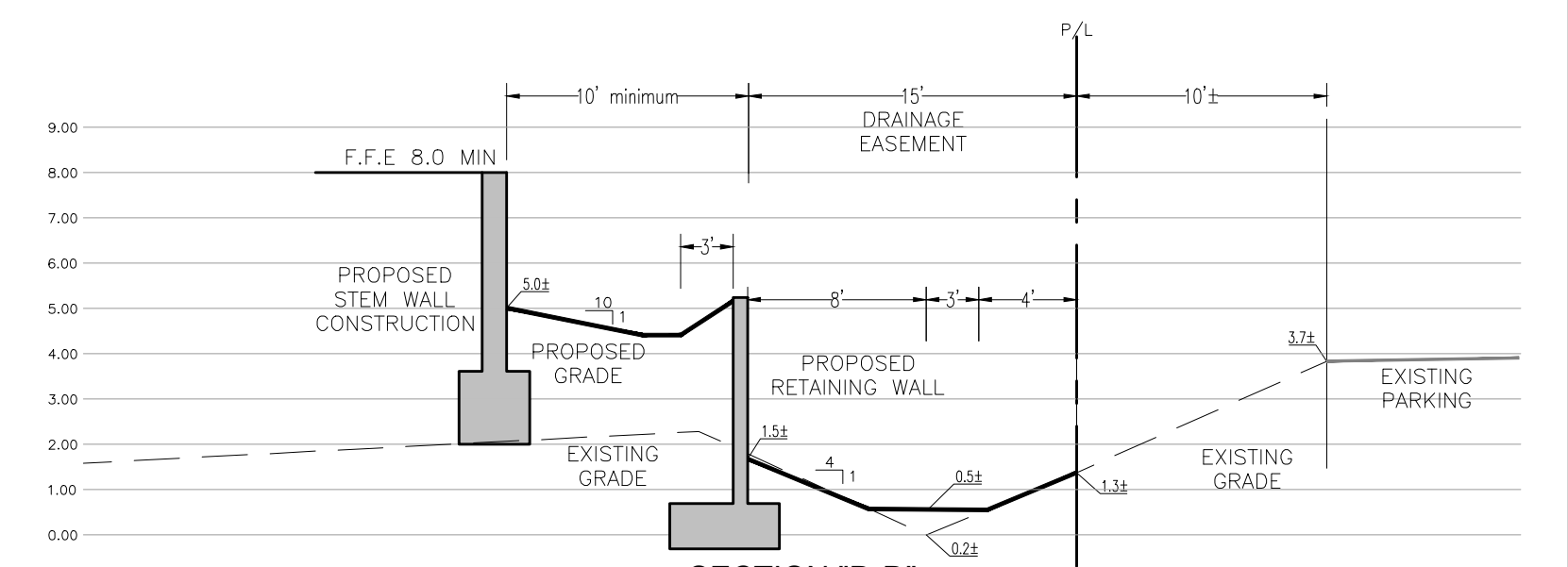
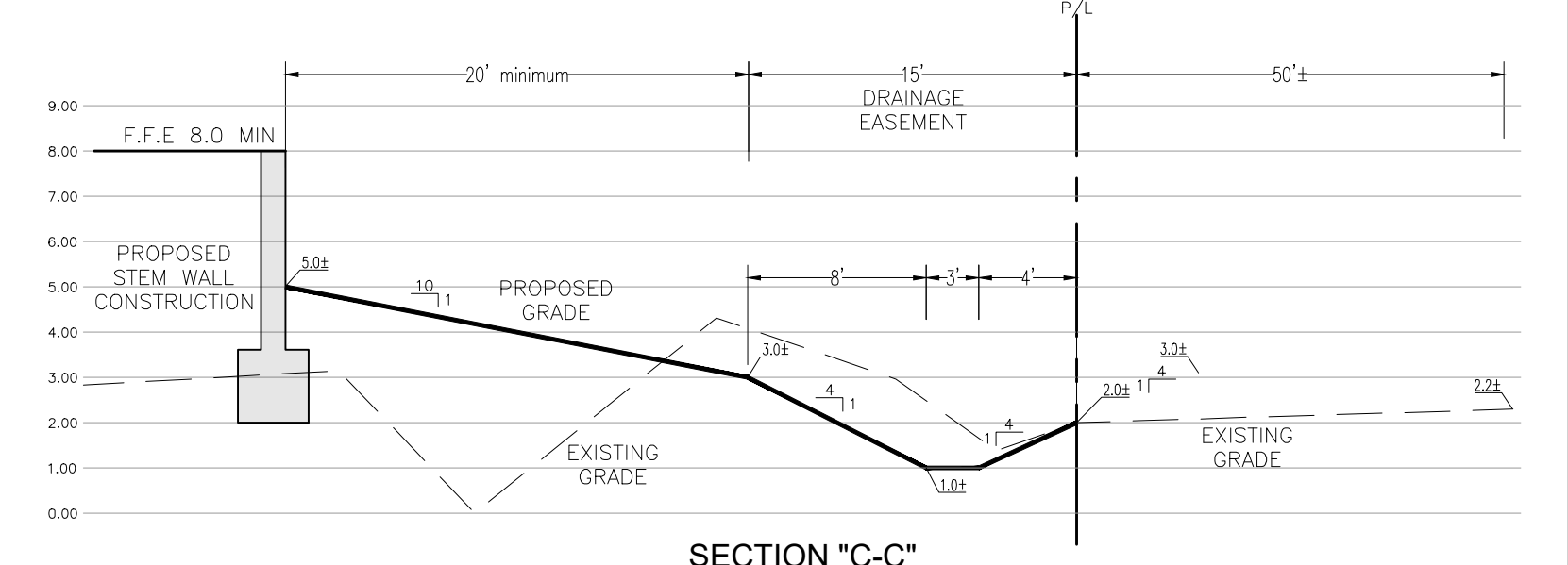
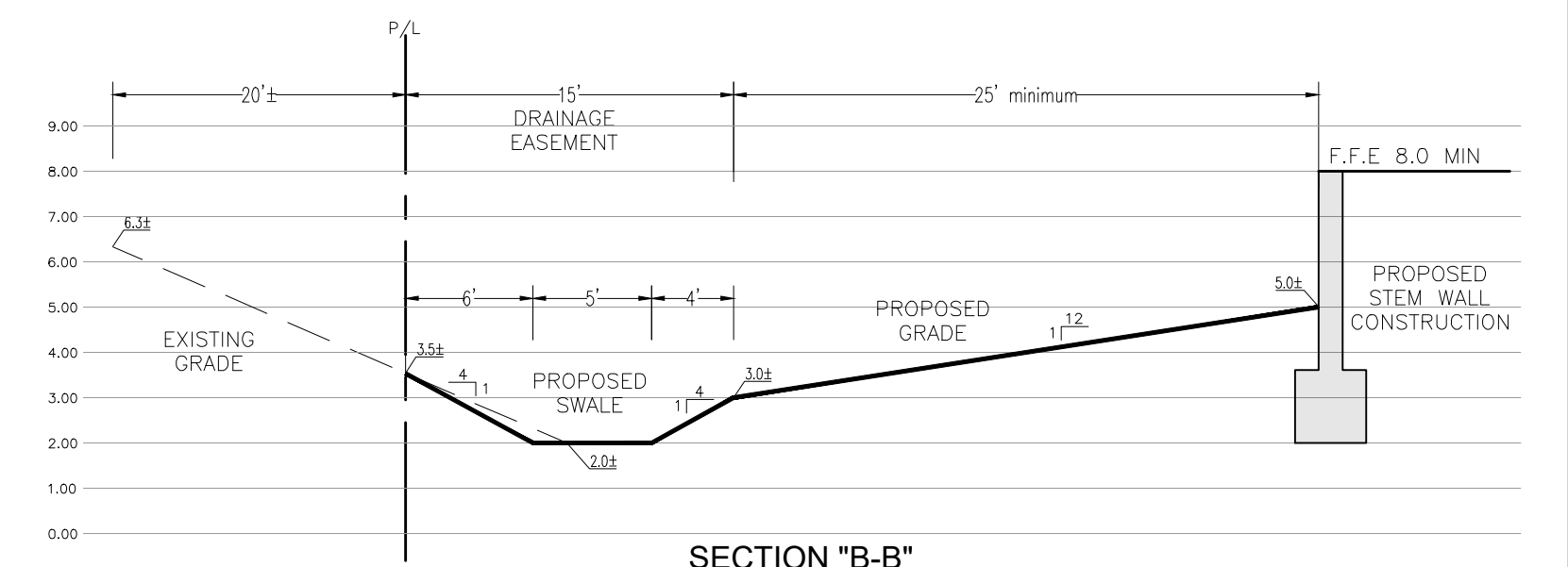
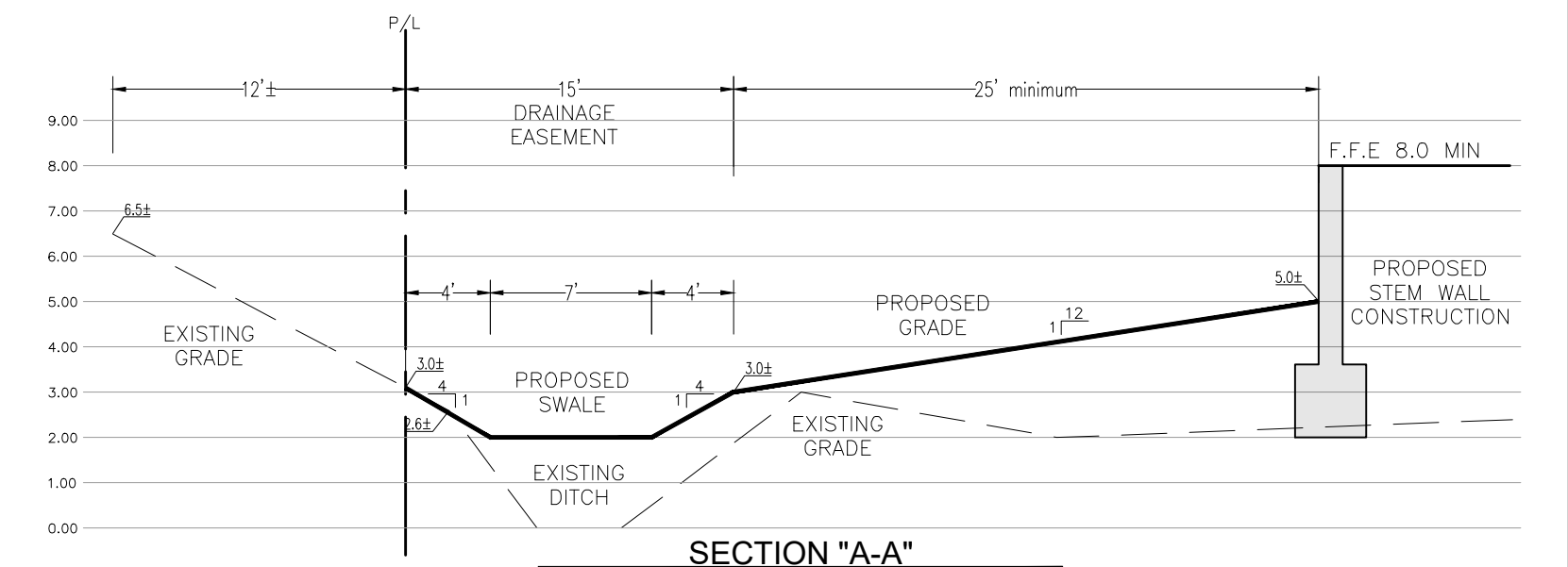


QUAY DOCK LANDING
 NORTHEAST ONE-QUARTER OF THE SOUTHWEST ONE-QUARTER
 SECTION 11, TOWNSHIP 32 SOUTH, RANGE 39 EAST
 INDIAN RIVER COUNTY, FLORIDA



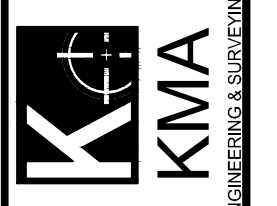
EXISTING DISCHARGE PIPE 12"x18" N IN V. (1.70) S IN V. (1.13) FLAPPER GATE TO BE REMOVED



**Know what's below.
 Call before you dig.**

THESE PLANS ARE NOT FOR CONSTRUCTION UNLESS STAMPED "Construction Set", DATED, SIGNED AND SEALED BY THE ENGINEER. ALL CONSTRUCTION SHALL BE IN COMPLIANCE WITH ALL JURISDICTIONAL PERMITS, CONDITIONS AND CONTRACT DOCUMENTS.

KMA Engineering & Surveying, LLC
 Consulting Engineers & Surveyors
 3001 Industrial Avenue, Ft. Pierce, FL 34946
 Phone: (772) 569-5505 Fax: (772) 569-1455
 Certificate of Authorization Number: 33705



PRELIMINARY DRAINAGE PLAN

QUAY DOCK LANDING
 Indian River County, Florida

Blaine R. Bergstresser, P.E.
 Fl. Reg. No. 84598

PROJECT NO. 17-028
 SHEET P-1

J:\20-1009_Quay Dock_63rd St. Sub Mileamp ref 17-028\Drawings\DRAINAGE PLAN.dwg by KMA-4 on Oct 09, 2023 - 2:26pm