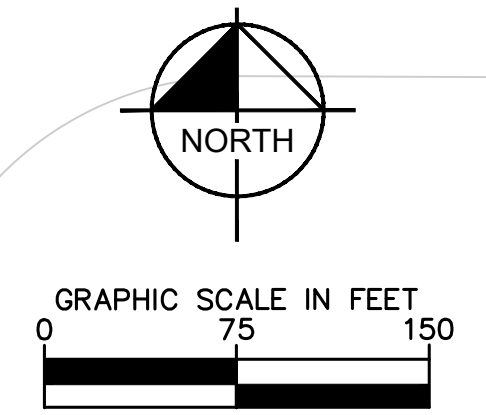
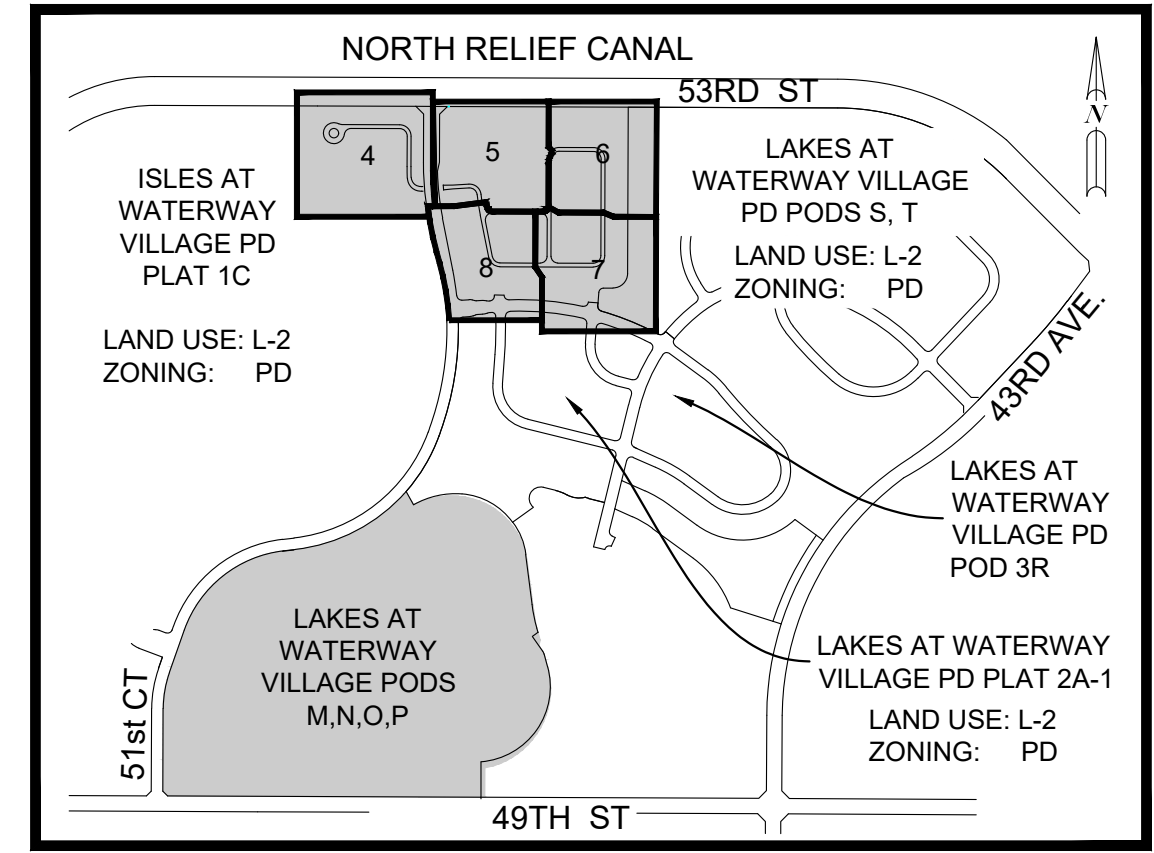
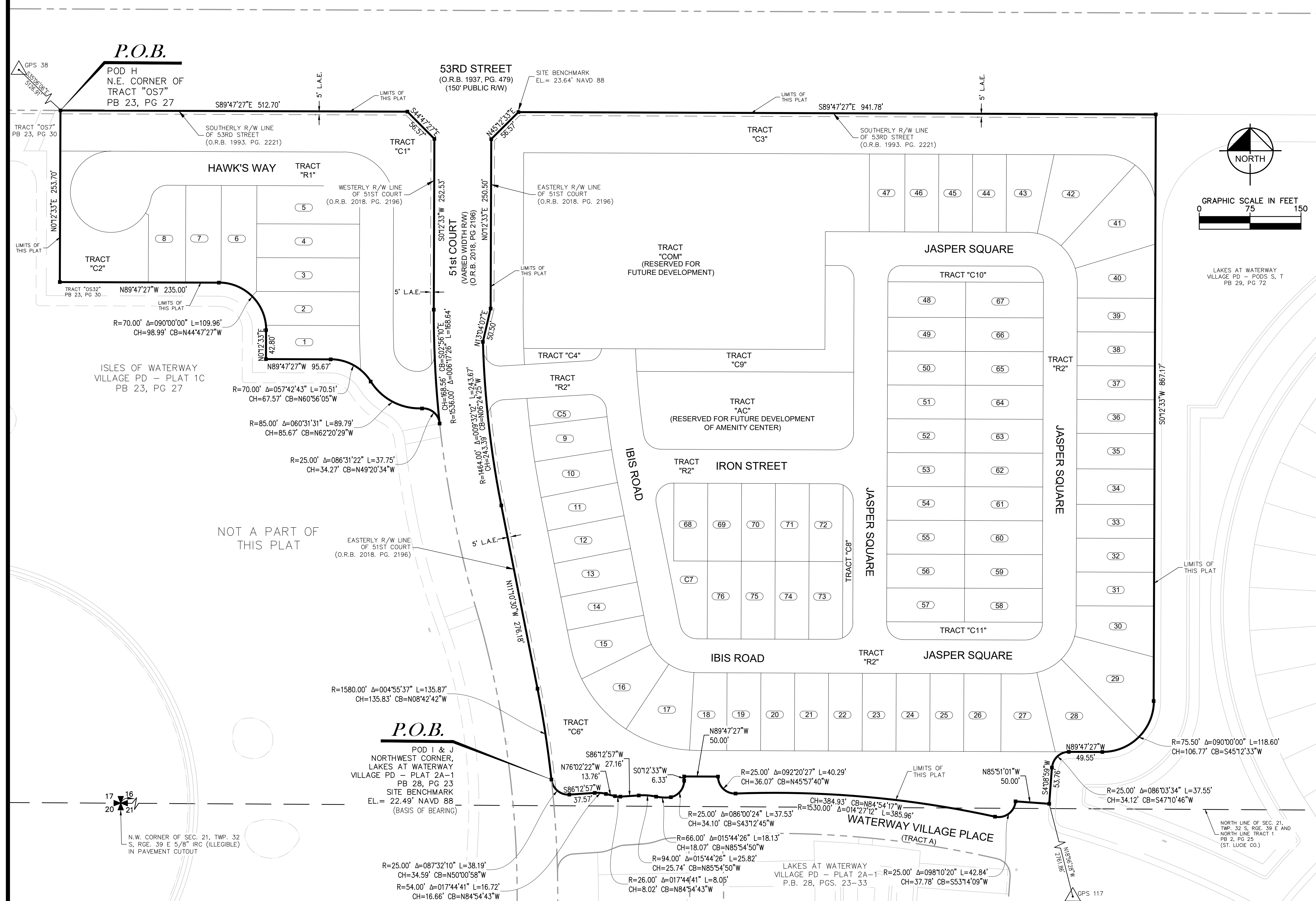


# MAGNOLIA COURT AT WATERWAY VILLAGE PD (PODS H,I,J)

BEING A REPLAT OF A PORTION OF TRACT 1, SECTION 21, TOWNSHIP 32 SOUTH, RANGE 39 EAST, INDIAN RIVER FARMS CO. PLAT OF LANDS AND PLAN FOR LAND DRAINAGE AND ROAD RESERVATIONS, ACCORDING TO THE PLAT THEREOF, AS RECORDED IN PLAT BOOK 2, PAGE 25, PUBLIC RECORDS OF ST. LUCIE COUNTY, FLORIDA, NOW BEING IN INDIAN RIVER COUNTY, FLORIDA, AND A PORTION OF SECTION 16, TOWNSHIP 32 SOUTH, RANGE 39 EAST, INDIAN RIVER COUNTY, FLORIDA

PLAT BOOK \_\_\_\_\_  
 PAGE \_\_\_\_\_  
 CFN \_\_\_\_\_  
 CLERK'S FILE NUMBER \_\_\_\_\_

NORTH RELIEF CANAL



- KEY MAP**  
N.T.S.
- LEGEND OF SYMBOLS**
- PLAT BOUNDARY
  - PARCEL LINE
  - - - EASEMENT LINE
  - - - ROAD CENTER LINE
  - - - SECTION LINE
  - - - MATCH LINE
  - ## LOT NUMBER
  - PRM, 4x4 CMD OR IRC STAMPED "PRM KHA LB 696" OR AS NOTED
  - PCP, NAIL AND DISC STAMPED "PCP KHA LB 696"
  - LOT CORNER
- ABBREVIATIONS**
- Δ DELTA (CENTRAL ANGLE)
  - CB CHORD BEARING
  - CCR CERTIFIED CORNER RECORD
  - CD CHORD DISTANCE
  - CMD CONCRETE MONUMENT AND DISK
  - D.E. DRAINAGE EASEMENT
  - L ARC LENGTH
  - L.A.E. LIMITED ACCESS EASEMENT
  - LB LICENSED BUSINESS
  - N.R. NON-RADIAL
  - ORB OFFICIAL RECORDS BOOK
  - P.B. PLAT BOOK
  - PC POINT OF CURVATURE
  - PCC POINT OF COMPOUND CURVATURE
  - PRC POINT OF REVERSE CURVATURE
  - PCP PERMANENT CONTROL POINT
  - PG. PAGE
  - PI POINT OF INTERSECTION
  - P.O.B. POINT OF BEGINNING
  - PRM PERMANENT REFERENCE MONUMENT
  - PT POINT OF TANGENCY
  - R RADIUS
  - RAD. RADIAL
  - RGE RANGE
  - RP RADIUS POINT
  - R/W RIGHT-OF-WAY
  - SEC SECTION
  - TWP TOWNSHIP
  - PI IRON ROD WITH CAP
  - IRC IRON ROD WITH CAP
  - EL. ELEVATION
  - NAVD 88' NORTH AMERICAN VERTICAL DATUM OF 1988
  - U.E. UTILITY EASEMENT
  - W.S.E. WATER AND SEWER EASEMENT

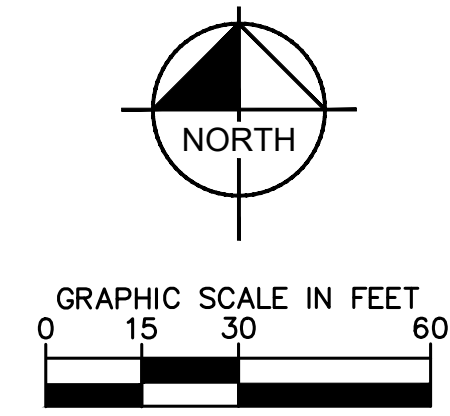
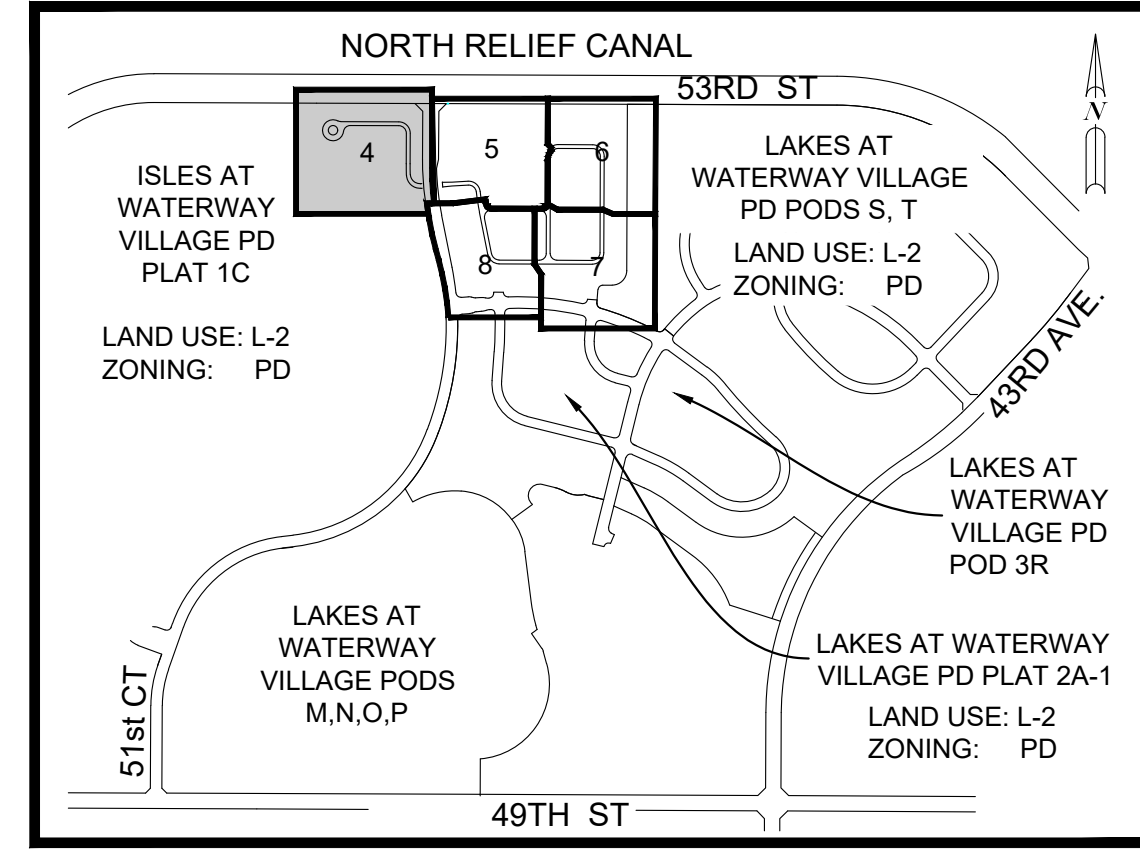
THIS INSTRUMENT WAS PREPARED BY:  
**KIMLEY-HORN AND ASSOCIATES, INC**  
 445 24TH STREET, SUITE 200  
 VERO BEACH, FLORIDA 32960  
 LB 696  
 ON JANUARY 30, 2019

REVISION	DATE	BY
INDIAN RIVER COUNTY COMMENTS	03/06/2019	MJP
INDIAN RIVER COUNTY COMMENTS	04/10/2019	MJP
INDIAN RIVER COUNTY COMMENTS	05/06/2019	MJP

# MAGNOLIA COURT AT WATERWAY VILLAGE PD (PODS H,I,J)

BEING A REPLAT OF A PORTION OF TRACT 1, SECTION 21, TOWNSHIP 32 SOUTH, RANGE 39 EAST, INDIAN RIVER FARMS CO. PLAT OF LANDS AND PLAN FOR LAND DRAINAGE AND ROAD RESERVATIONS, ACCORDING TO THE PLAT THEREOF, AS RECORDED IN PLAT BOOK 2, PAGE 25, PUBLIC RECORDS OF ST. LUCIE COUNTY, FLORIDA, NOW BEING IN INDIAN RIVER COUNTY, FLORIDA, AND A PORTION OF SECTION 16, TOWNSHIP 32 SOUTH, RANGE 39 EAST, INDIAN RIVER COUNTY, FLORIDA

PLAT BOOK \_\_\_\_\_  
 PAGE \_\_\_\_\_  
 CFN \_\_\_\_\_  
 CLERK'S FILE NUMBER \_\_\_\_\_

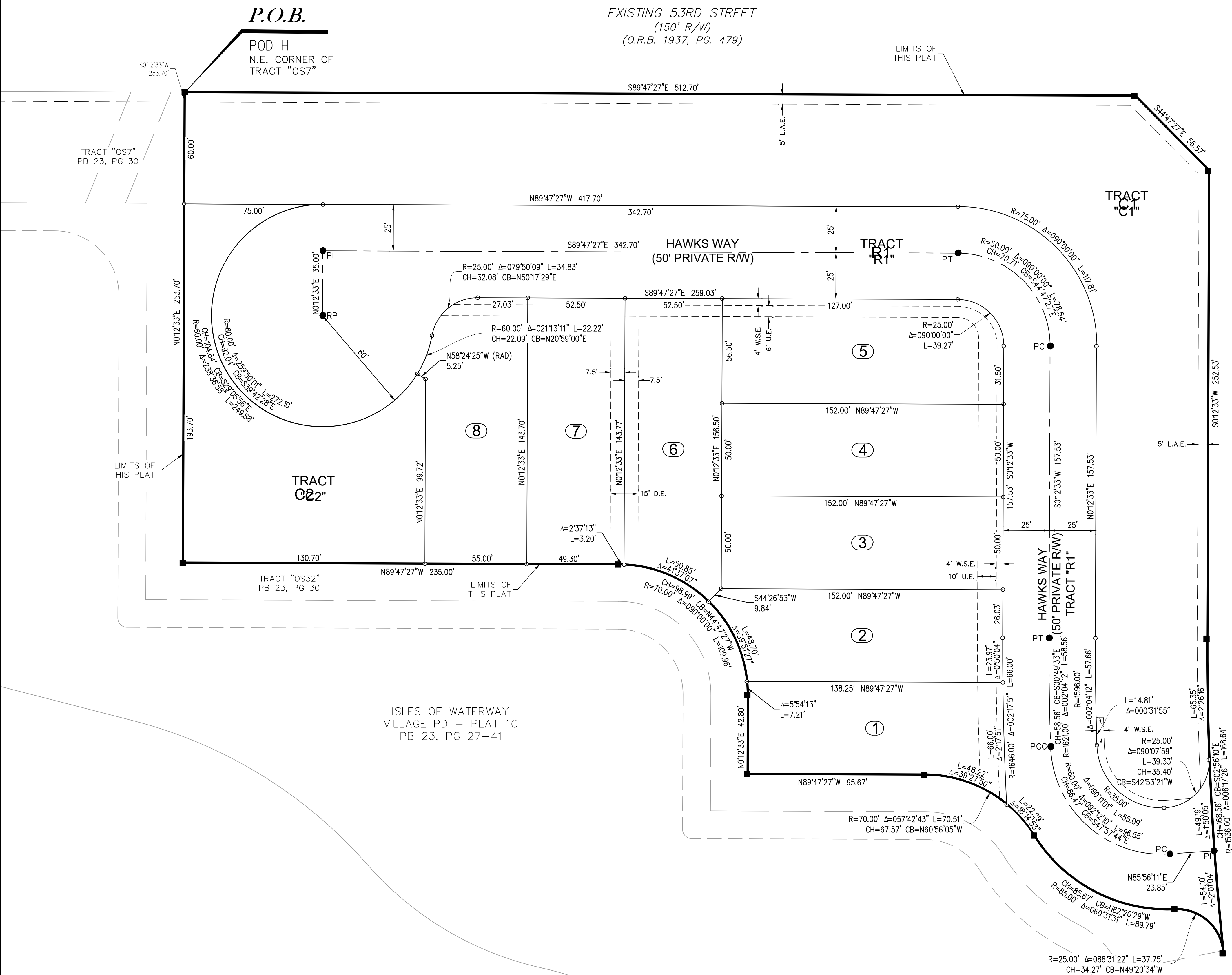


KEY MAP  
N.T.S.

- LEGEND OF SYMBOLS**
- PLAT BOUNDARY
  - PARCEL LINE
  - - - - EASEMENT LINE
  - - - - ROAD CENTER LINE
  - - - - SECTION LINE
  - · - · - MATCH LINE
  - ## LOT NUMBER
  - PRM, 4x4 CMD OR IRC STAMPED "PRM KHA LB 696" OR AS NOTED
  - PCP, NAIL AND DISC STAMPED "PCP KHA LB 696"
  - LOT CORNER

- ABBREVIATIONS**
- Δ DELTA (CENTRAL ANGLE)
  - CB CHORD BEARING
  - CCR CERTIFIED CORNER RECORD
  - CD CHORD DISTANCE
  - CMD CONCRETE MONUMENT AND DISK
  - D.E. DRAINAGE EASEMENT
  - L ARC LENGTH
  - L.A.E. LIMITED ACCESS EASEMENT
  - LB LICENSED BUSINESS
  - N.R. NON-RADIAL
  - ORB OFFICIAL RECORDS BOOK
  - P.B. PLAT BOOK
  - PC POINT OF CURVATURE
  - PCC POINT OF COMPOUND CURVATURE
  - PRC POINT OF REVERSE CURVATURE
  - PCP PERMANENT CONTROL POINT
  - PG. PAGE
  - PI POINT OF INTERSECTION
  - P.O.B. POINT OF BEGINNING
  - PRM PERMANENT REFERENCE MONUMENT
  - PT POINT OF TANGENCY
  - R RADIUS
  - RAD. RADIAL
  - RGE RANGE
  - RP RADIUS POINT
  - R/W RIGHT-OF-WAY
  - SEC SECTION
  - TWP TOWNSHIP
  - IRC IRON ROD WITH CAP
  - EL.= ELEVATION
  - NAVD 88' NORTH AMERICAN VERTICAL DATUM OF 1988
  - U.E. UTILITY EASEMENT
  - W.S.E. WATER AND SEWER EASEMENT

REVISION	DATE	BY
INDIAN RIVER COUNTY COMMENTS	03/06/2019	MJP
INDIAN RIVER COUNTY COMMENTS	04/10/2019	MJP
INDIAN RIVER COUNTY COMMENTS	05/06/2019	MJP



EXISTING 51ST COURT  
(R/W WIDTH VARIES)  
ORB 2018, PAGE 2196  
MATCHLINE  
(SEE SHEET 5)

MATCHLINE  
(SEE SHEET 8)

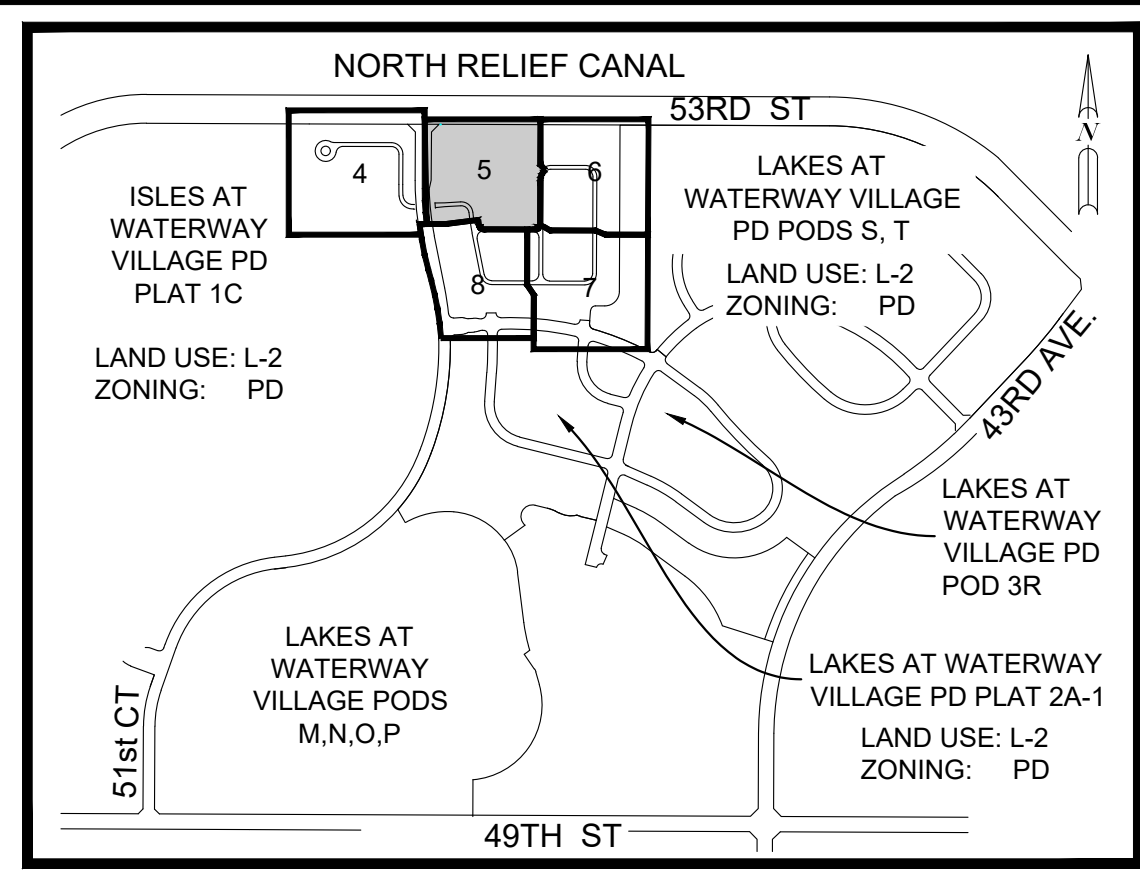
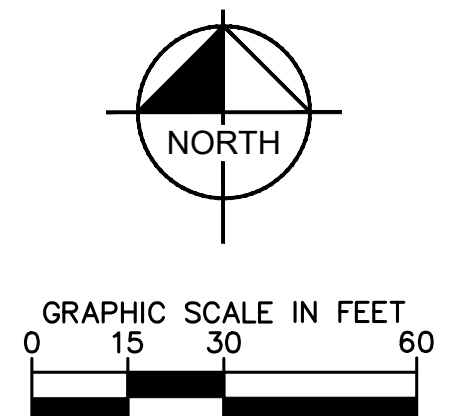
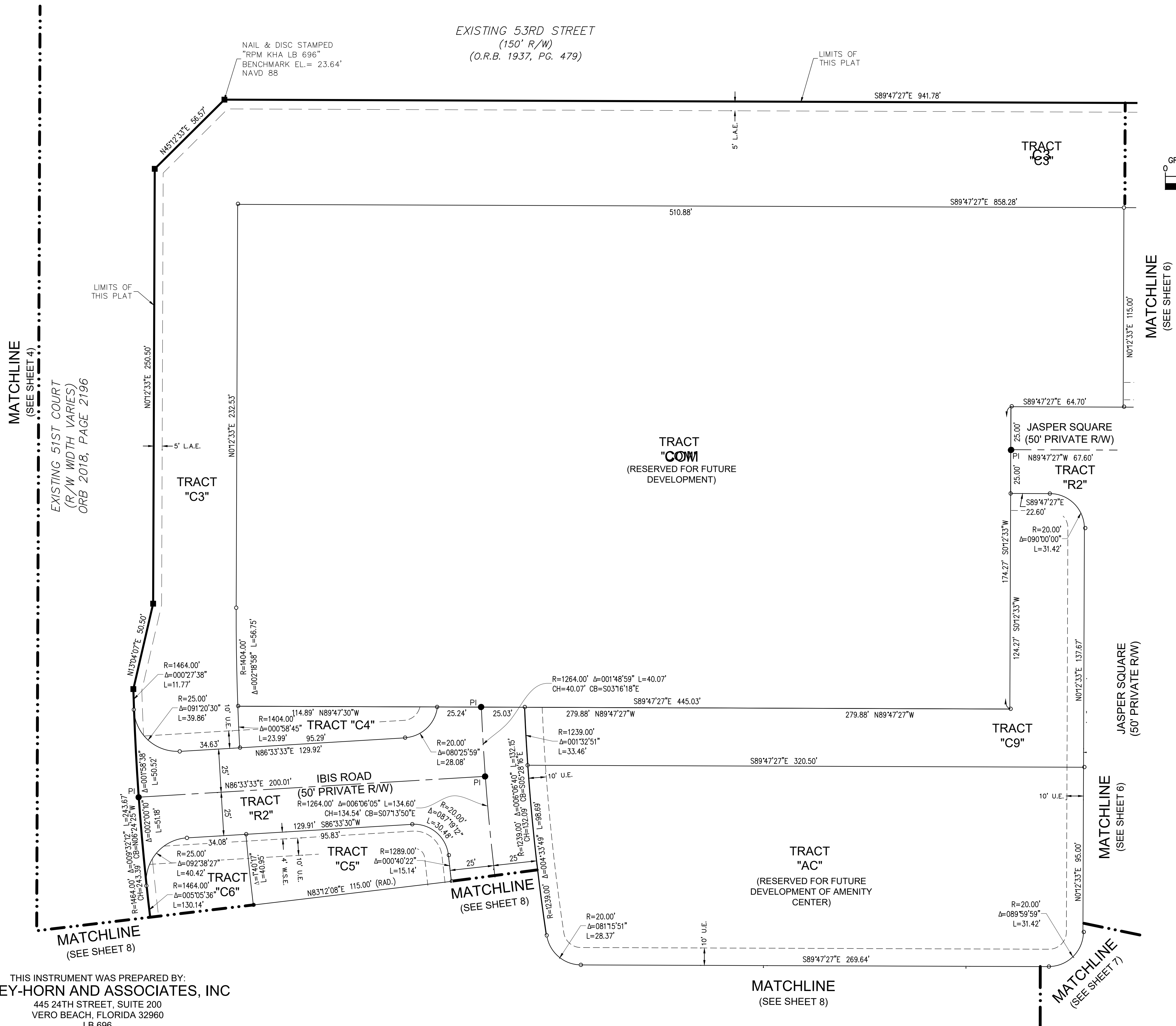
THIS INSTRUMENT WAS PREPARED BY:  
**KIMLEY-HORN AND ASSOCIATES, INC**  
 445 24TH STREET, SUITE 200  
 VERO BEACH, FLORIDA 32960  
 LB 696  
 ON JANUARY 30, 2019

Plotted By: Procco, Michael Sheet Set: Waterway Village Plat 5.T Layout: 4 PLAT May 22, 2019 01:06:26pm K:\VRB\_Survey\047897015 WATERWAY\_CADD\Commons\Final\_Plat\Plat\_PodHU-047897015.dwg

# MAGNOLIA COURT AT WATERWAY VILLAGE PD (PODS H,I,J)

BEING A REPLAT OF A PORTION OF TRACT 1, SECTION 21, TOWNSHIP 32 SOUTH, RANGE 39 EAST, INDIAN RIVER FARMS CO. PLAT OF LANDS AND PLAN FOR LAND DRAINAGE AND ROAD RESERVATIONS, ACCORDING TO THE PLAT THEREOF, AS RECORDED IN PLAT BOOK 2, PAGE 25, PUBLIC RECORDS OF ST. LUCIE COUNTY, FLORIDA, NOW BEING IN INDIAN RIVER COUNTY, FLORIDA, AND A PORTION OF SECTION 16, TOWNSHIP 32 SOUTH, RANGE 39 EAST, INDIAN RIVER COUNTY, FLORIDA

PLAT BOOK \_\_\_\_\_  
 PAGE \_\_\_\_\_  
 CFN \_\_\_\_\_  
 CLERK'S FILE NUMBER \_\_\_\_\_



KEY MAP  
N.T.S.

**LEGEND OF SYMBOLS**

- PLAT BOUNDARY
- PARCEL LINE
- - - - EASEMENT LINE
- - - - ROAD CENTER LINE
- - - - SECTION LINE
- · · · · MATCH LINE
- ## LOT NUMBER
- PRM, 4x4 CMD OR IRC STAMPED  
"PRM KHA LB 696" OR AS NOTED
- PCP, NAIL AND DISC STAMPED  
"PCP KHA LB 696"
- LOT CORNER

**ABBREVIATIONS**

- Δ DELTA (CENTRAL ANGLE)
- CB CHORD BEARING
- CCR CERTIFIED CORNER RECORD
- CD CHORD DISTANCE
- CMD CONCRETE MONUMENT AND DISK
- D.E. DRAINAGE EASEMENT
- L ARC LENGTH
- L.A.E. LIMITED ACCESS EASEMENT
- LB LICENSED BUSINESS
- N.R. NON-RADIAL
- ORB OFFICIAL RECORDS BOOK
- P.B. PLAT BOOK
- PC POINT OF CURVATURE
- PCC POINT OF COMPOUND CURVATURE
- PRC POINT OF REVERSE CURVATURE
- PCP PERMANENT CONTROL POINT
- PG. PAGE
- PI POINT OF INTERSECTION
- P.O.B. POINT OF BEGINNING
- PRM PERMANENT REFERENCE MONUMENT
- PT POINT OF TANGENCY
- R RADIUS
- RAD. RADIAL
- RGE RANGE
- RP RADIUS POINT
- R/W RIGHT-OF-WAY
- SEC SECTION
- TWP TOWNSHIP
- IRC IRON ROD WITH CAP
- EL. ELEVATION
- NAVD 88' NORTH AMERICAN VERTICAL DATUM OF 1988
- U.E. UTILITY EASEMENT
- W.S.E. WATER AND SEWER EASEMENT

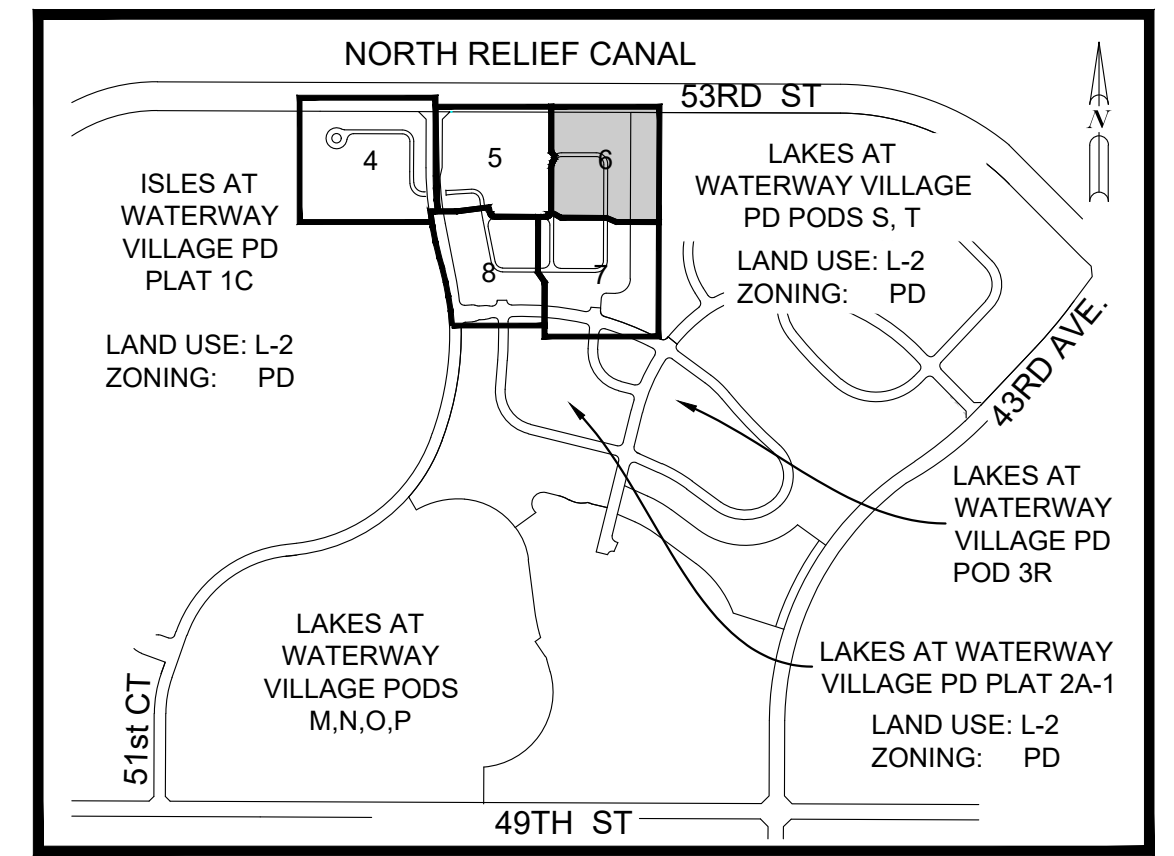
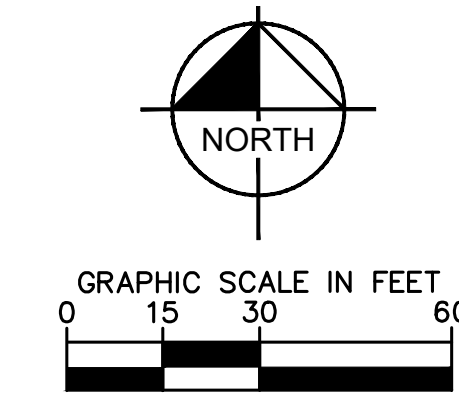
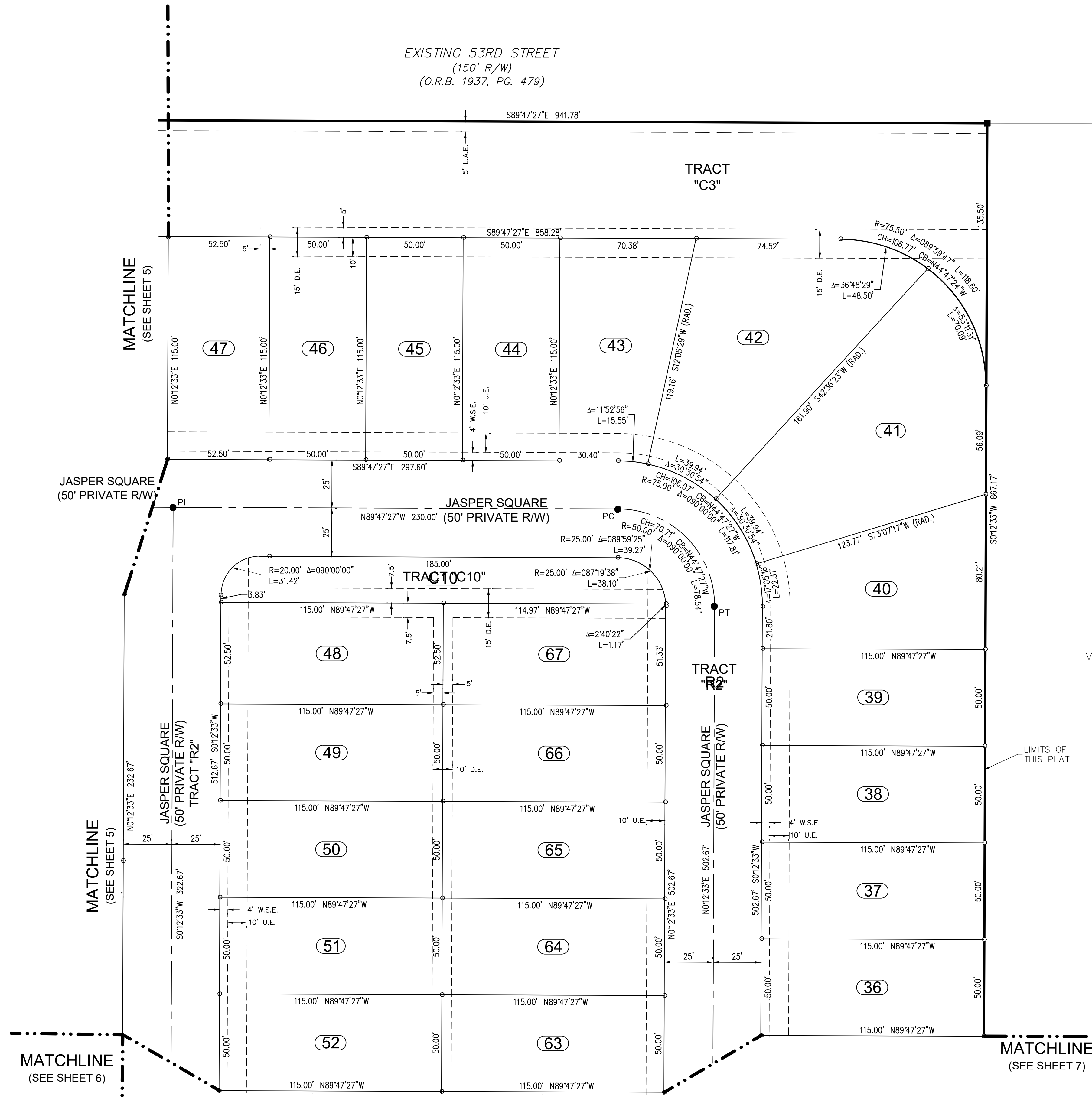
THIS INSTRUMENT WAS PREPARED BY:  
**KIMLEY-HORN AND ASSOCIATES, INC**  
 445 24TH STREET, SUITE 200  
 VERO BEACH, FLORIDA 32960  
 LB 696  
 ON JANUARY 30, 2019

REVISION	DATE	BY
INDIAN RIVER COUNTY COMMENTS	03/06/2019	MJP
INDIAN RIVER COUNTY COMMENTS	04/10/2019	MJP
INDIAN RIVER COUNTY COMMENTS	05/06/2019	MJP

# MAGNOLIA COURT AT WATERWAY VILLAGE PD (PODS H,I,J)

BEING A REPLAT OF A PORTION OF TRACT 1, SECTION 21, TOWNSHIP 32 SOUTH, RANGE 39 EAST, INDIAN RIVER FARM CO. PLAT OF LANDS AND PLAN FOR LAND DRAINAGE AND ROAD RESERVATIONS, ACCORDING TO THE PLAT THEREOF, AS RECORDED IN PLAT BOOK 2, PAGE 25, PUBLIC RECORDS OF ST. LUCIE COUNTY, FLORIDA, NOW BEING IN INDIAN RIVER COUNTY, FLORIDA, AND A PORTION OF SECTION 16, TOWNSHIP 32 SOUTH, RANGE 39 EAST, INDIAN RIVER COUNTY, FLORIDA

PLAT BOOK \_\_\_\_\_  
 PAGE \_\_\_\_\_  
 CFN \_\_\_\_\_  
 CLERK'S FILE NUMBER \_\_\_\_\_



KEY MAP  
N.T.S.

- ABBREVIATIONS**
- Δ DELTA (CENTRAL ANGLE)
  - CB CHORD BEARING
  - CCR CERTIFIED CORNER RECORD
  - CD CHORD DISTANCE
  - CMD CONCRETE MONUMENT AND DISK
  - D.E. DRAINAGE EASEMENT
  - L ARC LENGTH
  - L.A.E. LIMITED ACCESS EASEMENT
  - LB LICENSED BUSINESS
  - N.R. NON-RADIAL
  - ORB OFFICIAL RECORDS BOOK
  - P.B. PLAT BOOK
  - PC POINT OF CURVATURE
  - PCC POINT OF COMPOUND CURVATURE
  - PRC POINT OF REVERSE CURVATURE
  - PCP PERMANENT CONTROL POINT
  - PG. PAGE
  - PI POINT OF INTERSECTION
  - P.O.B. POINT OF BEGINNING
  - PRM PERMANENT REFERENCE MONUMENT
  - PT POINT OF TANGENCY
  - R RADIUS
  - RAD. RADIAL
  - RGE RANGE
  - RP RADIUS POINT
  - R/W RIGHT-OF-WAY
  - SEC SECTION
  - TWP TOWNSHIP
  - IRC IRON ROD WITH CAP
  - EL. ELEVATION
  - NAVD 88' NORTH AMERICAN VERTICAL DATUM OF 1988
  - U.E. UTILITY EASEMENT
  - W.S.E. WATER AND SEWER EASEMENT

- LEGEND OF SYMBOLS**
- PLAT BOUNDARY
  - PARCEL LINE
  - - - - EASEMENT LINE
  - - - - ROAD CENTER LINE
  - - - - SECTION LINE
  - · - · - · MATCH LINE
  - ## LOT NUMBER
  - PRM, 4x4 CMD OR IRC STAMPED "PRM KHA LB 696" OR AS NOTED
  - PCP, NAIL AND DISC STAMPED "PCP KHA LB 696"
  - LOT CORNER

REVISION	DATE	BY
INDIAN RIVER COUNTY COMMENTS	03/06/2019	MJP
INDIAN RIVER COUNTY COMMENTS	04/10/2019	MJP
INDIAN RIVER COUNTY COMMENTS	05/06/2019	MJP

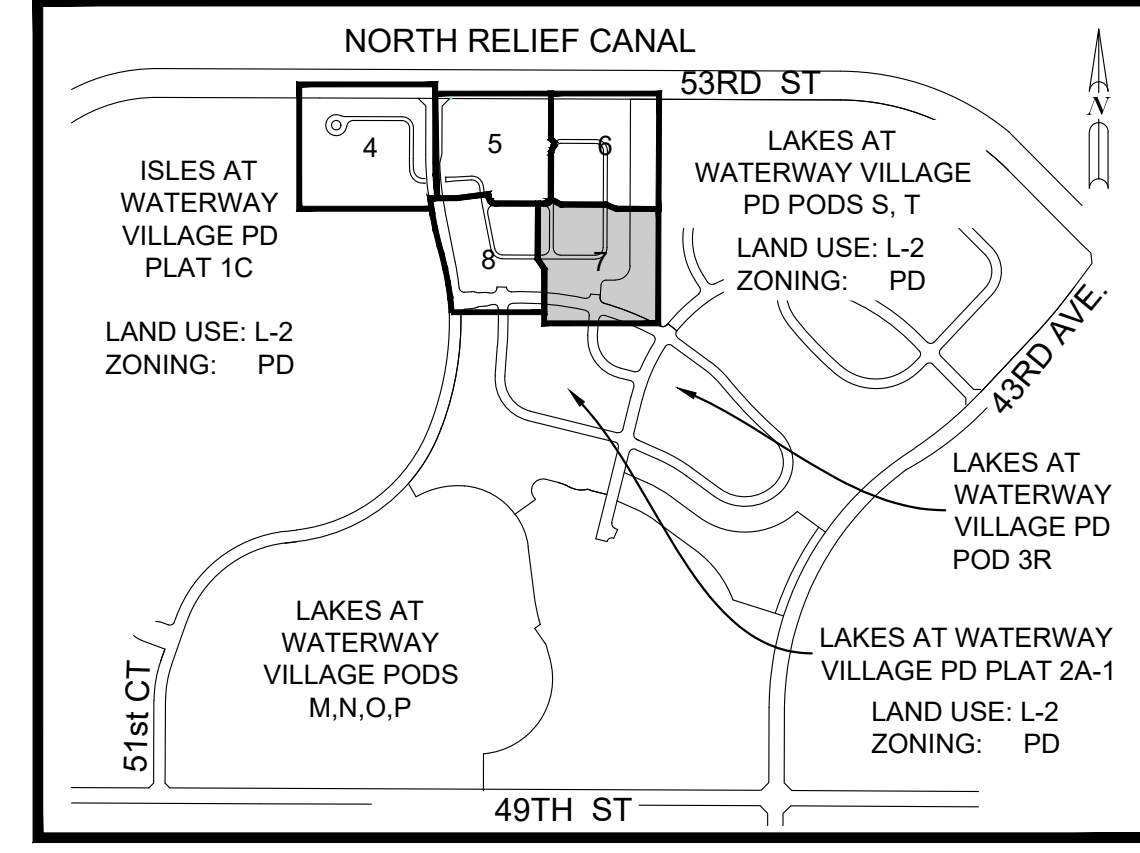
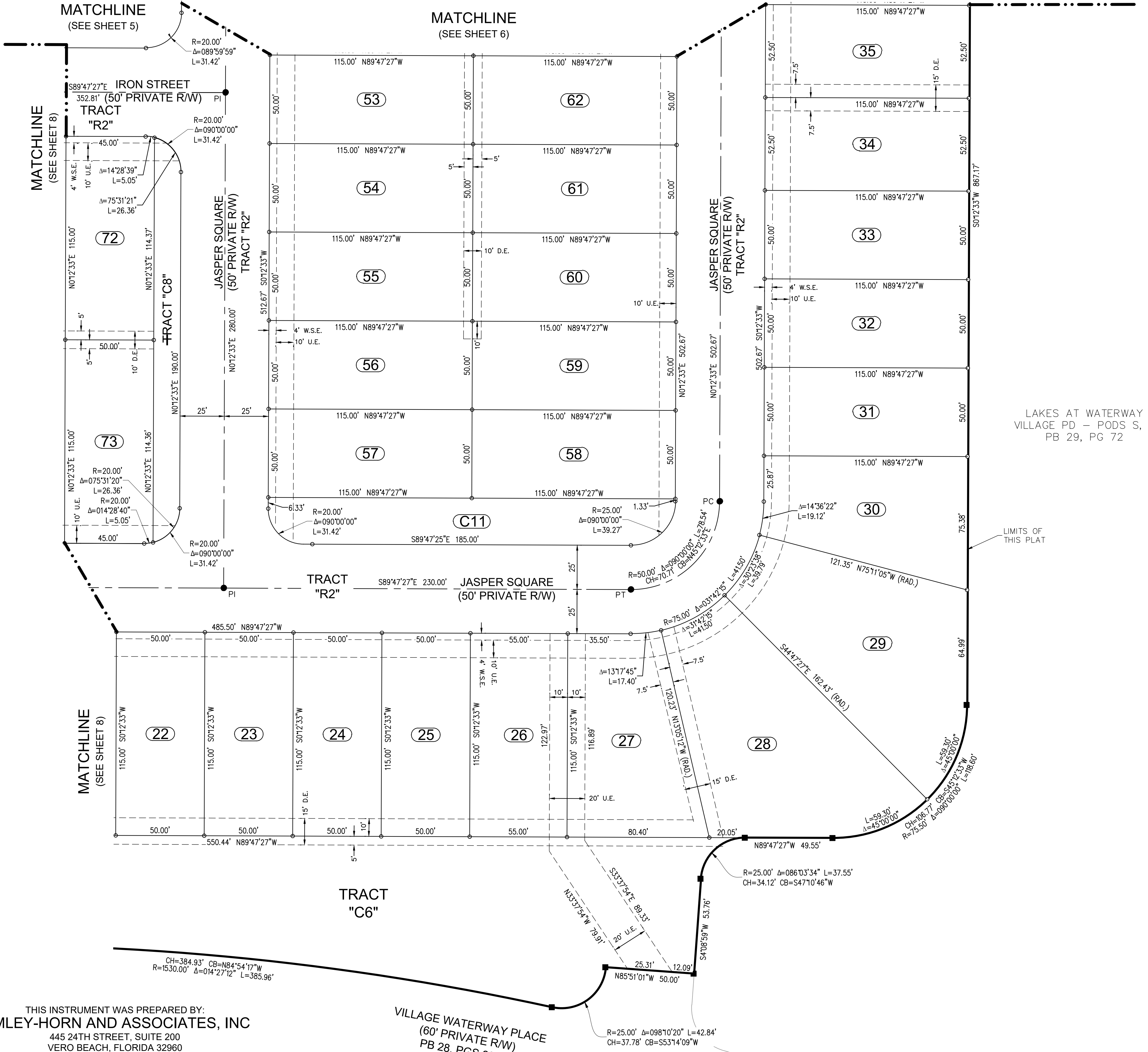
THIS INSTRUMENT WAS PREPARED BY:  
**KIMLEY-HORN AND ASSOCIATES, INC**  
 445 24TH STREET, SUITE 200  
 VERO BEACH, FLORIDA 32960  
 LB 696  
 ON JANUARY 30, 2019

Plotted By: Procco, Michael Sheet Set: Waterway Village Plat 5, T Layout: 6 PLAT May 22, 2019 01:06:28pm K:\VRB\_Survey\047897015 WATERWAY\_CADD\Commons\Final\_Plat\Plat\_PodH-I-J.dwg

# MAGNOLIA COURT AT WATERWAY VILLAGE PD (PODS H,I,J)

BEING A REPLAT OF A PORTION OF TRACT 1, SECTION 21, TOWNSHIP 32 SOUTH, RANGE 39 EAST, INDIAN RIVER FARMS CO. PLAT OF LANDS AND PLAN FOR LAND DRAINAGE AND ROAD RESERVATIONS, ACCORDING TO THE PLAT THEREOF, AS RECORDED IN PLAT BOOK 2, PAGE 25, PUBLIC RECORDS OF ST. LUCIE COUNTY, FLORIDA, NOW BEING IN INDIAN RIVER COUNTY, FLORIDA, AND A PORTION OF SECTION 16, TOWNSHIP 32 SOUTH, RANGE 39 EAST, INDIAN RIVER COUNTY, FLORIDA

PLAT BOOK \_\_\_\_\_  
 PAGE \_\_\_\_\_  
 CFN \_\_\_\_\_  
 CLERK'S FILE NUMBER \_\_\_\_\_



KEY MAP  
N.T.S.

LEGEND OF SYMBOLS

- PLAT BOUNDARY
- PARCEL LINE
- - - - EASEMENT LINE
- ROAD CENTER LINE
- SECTION LINE
- MATCH LINE
- ## LOT NUMBER
- PRM, 4x4 CMD OR IRC STAMPED "PRM KHA LB 696" OR AS NOTED
- PCP, NAIL AND DISC STAMPED "PCP KHA LB 696"
- LOT CORNER

ABBREVIATIONS

- Δ DELTA (CENTRAL ANGLE)
- CB CHORD BEARING
- CCR CERTIFIED CORNER RECORD
- CD CHORD DISTANCE
- CMD CONCRETE MONUMENT AND DISK
- D.E. DRAINAGE EASEMENT
- L ARC LENGTH
- L.A.E. LIMITED ACCESS EASEMENT
- LB LICENSED BUSINESS
- N.R. NON-RADIAL
- ORB OFFICIAL RECORDS BOOK
- P.B. PLAT BOOK
- PC POINT OF CURVATURE
- PCC POINT OF COMPOUND CURVATURE
- PRC POINT OF REVERSE CURVATURE
- PCP PERMANENT CONTROL POINT
- PG. PAGE
- PI POINT OF INTERSECTION
- P.O.B. POINT OF BEGINNING
- PRM PERMANENT REFERENCE MONUMENT
- PT POINT OF TANGENCY
- R RADIUS
- RAD. RADIAL
- RGE RANGE
- RP RADIUS POINT
- R/W RIGHT-OF-WAY
- SEC SECTION
- TWP TOWNSHIP
- IRC IRON ROD WITH CAP
- EL. ELEVATION
- NAVD 88' NORTH AMERICAN VERTICAL DATUM OF 1988
- U.E. UTILITY EASEMENT
- W.S.E. WATER AND SEWER EASEMENT

REVISION	DATE	BY
INDIAN RIVER COUNTY COMMENTS	03/06/2019	MJP
INDIAN RIVER COUNTY COMMENTS	04/10/2019	MJP
INDIAN RIVER COUNTY COMMENTS	05/06/2019	MJP

THIS INSTRUMENT WAS PREPARED BY:  
**KIMLEY-HORN AND ASSOCIATES, INC**  
 445 24TH STREET, SUITE 200  
 VERO BEACH, FLORIDA 32960  
 LB 696  
 ON JANUARY 30, 2019

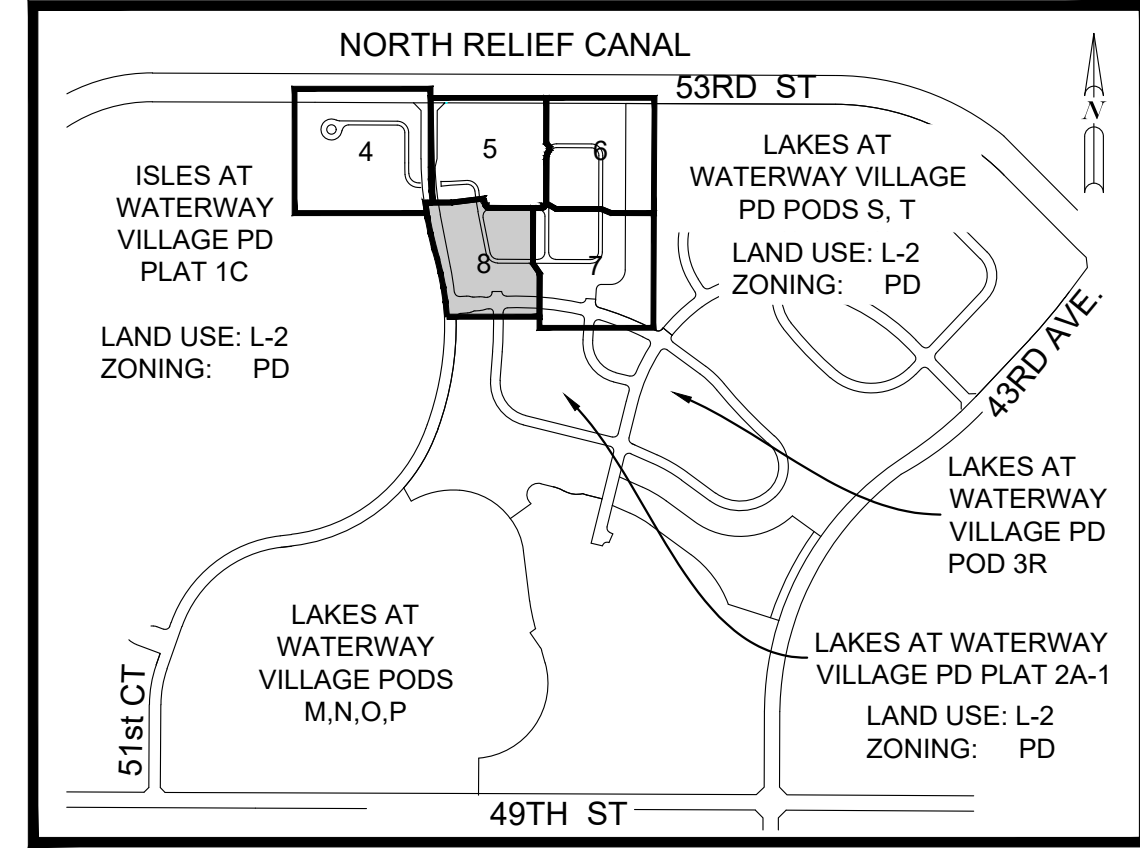
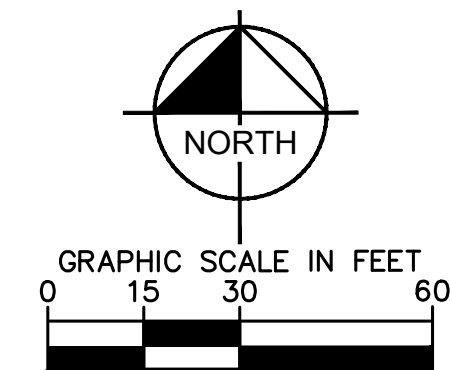
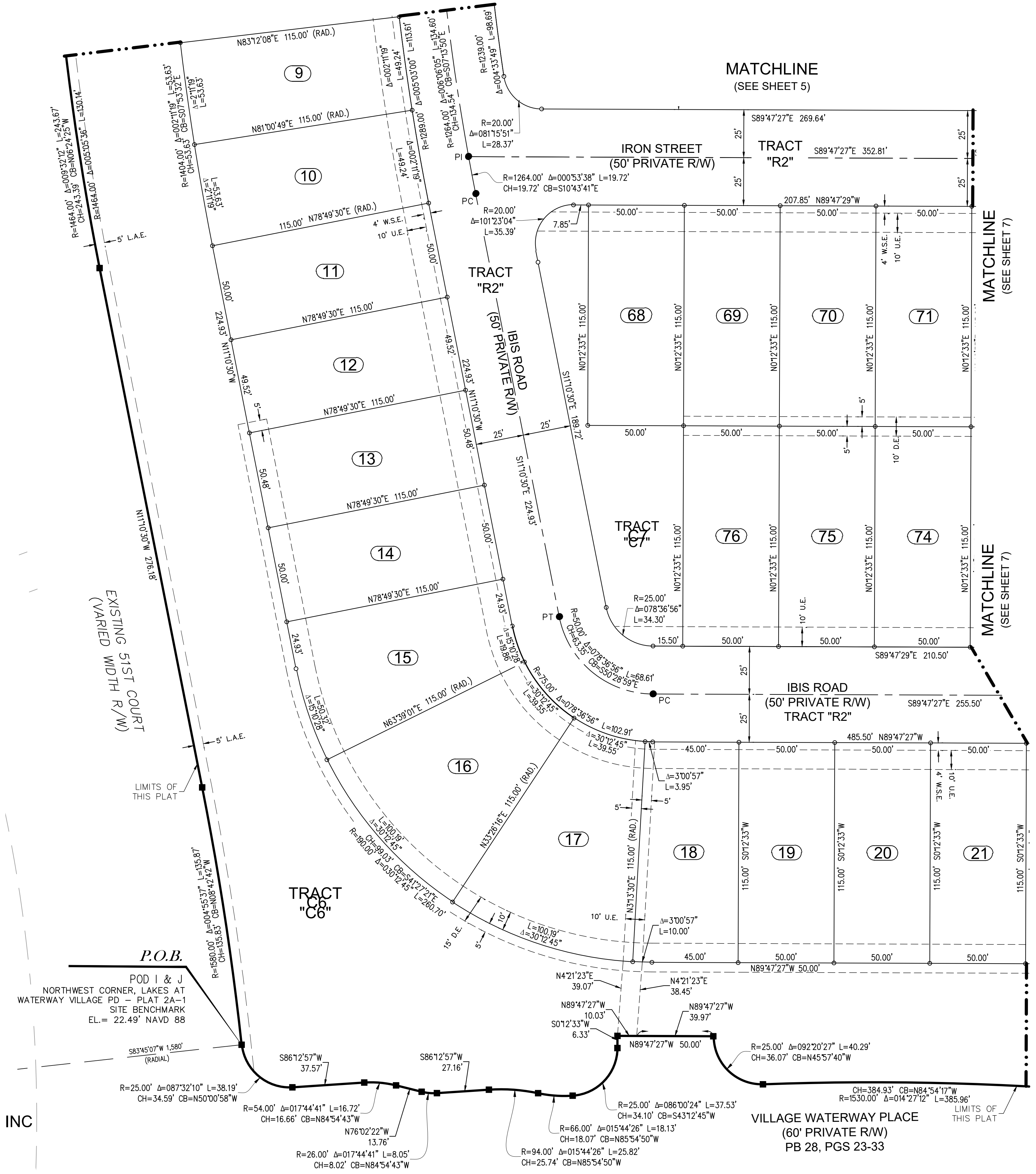
VILLAGE WATERWAY PLACE  
 (60' PRIVATE R/W)  
 PB 28, PGS 23-33

Plotted By: Procco, Michael Sheet Set: Waterway Village Plat 5.T Layout: 7 PLAT May 22, 2019 01:06:31pm K:\VRB\_Survey\047897015 WATERWAY\_CADD\Commons\Final\_Plat\_V\Plat-PodH-I-J.dwg

# MAGNOLIA COURT AT WATERWAY VILLAGE PD (PODS H,I,J)

BEING A REPLAT OF A PORTION OF TRACT 1, SECTION 21, TOWNSHIP 32 SOUTH, RANGE 39 EAST, INDIAN RIVER FARMS CO. PLAT OF LANDS AND PLAN FOR LAND DRAINAGE AND ROAD RESERVATIONS, ACCORDING TO THE PLAT THEREOF, AS RECORDED IN PLAT BOOK 2, PAGE 25, PUBLIC RECORDS OF ST. LUCIE COUNTY, FLORIDA, NOW BEING IN INDIAN RIVER COUNTY, FLORIDA, AND A PORTION OF SECTION 16, TOWNSHIP 32 SOUTH, RANGE 39 EAST, INDIAN RIVER COUNTY, FLORIDA

PLAT BOOK \_\_\_\_\_  
 PAGE \_\_\_\_\_  
 CFN \_\_\_\_\_  
 CLERK'S FILE NUMBER \_\_\_\_\_



- LEGEND OF SYMBOLS**
- PLAT BOUNDARY
  - PARCEL LINE
  - - - EASEMENT LINE
  - - - ROAD CENTER LINE
  - - - SECTION LINE
  - - - MATCH LINE
  - ## LOT NUMBER
  - PRM, 4x4 CMD OR IRC STAMPED  
"PRM KHA LB 696" OR AS NOTED
  - PCP, NAIL AND DISC STAMPED  
"PCP KHA LB 696"
  - LOT CORNER

- ABBREVIATIONS**
- Δ DELTA (CENTRAL ANGLE)
  - CB CHORD BEARING
  - CCR CERTIFIED CORNER RECORD
  - CD CHORD DISTANCE
  - CMD CONCRETE MONUMENT AND DISK
  - D.E. DRAINAGE EASEMENT
  - L ARC LENGTH
  - L.A.E. LIMITED ACCESS EASEMENT
  - LB LICENSED BUSINESS
  - N.R. NON-RADIAL
  - ORB OFFICIAL RECORDS BOOK
  - P.B. PLAT BOOK
  - PC POINT OF CURVATURE
  - PCC POINT OF COMPOUND CURVATURE
  - PRC POINT OF REVERSE CURVATURE
  - PCP PERMANENT CONTROL POINT
  - PG. PAGE
  - PI POINT OF INTERSECTION
  - P.O.B. POINT OF BEGINNING
  - PRM PERMANENT REFERENCE MONUMENT
  - PT POINT OF TANGENCY
  - R RADIUS
  - RAD. RADIAL
  - RGE RANGE
  - RP RADIUS POINT
  - R/W RIGHT-OF-WAY
  - SEC SECTION
  - TWP TOWNSHIP
  - IRC IRON ROD WITH CAP
  - EL. ELEVATION
  - NAVD 88' NORTH AMERICAN VERTICAL DATUM OF 1988
  - U.E. UTILITY EASEMENT
  - W.S.E. WATER AND SEWER EASEMENT

REVISION	DATE	BY
INDIAN RIVER COUNTY COMMENTS	03/06/2019	MJP
INDIAN RIVER COUNTY COMMENTS	04/10/2019	MJP
INDIAN RIVER COUNTY COMMENTS	05/06/2019	MJP

THIS INSTRUMENT WAS PREPARED BY:  
**KIMLEY-HORN AND ASSOCIATES, INC**  
 445 24TH STREET, SUITE 200  
 VERO BEACH, FLORIDA 32960  
 LB 696  
 ON JANUARY 30, 2019