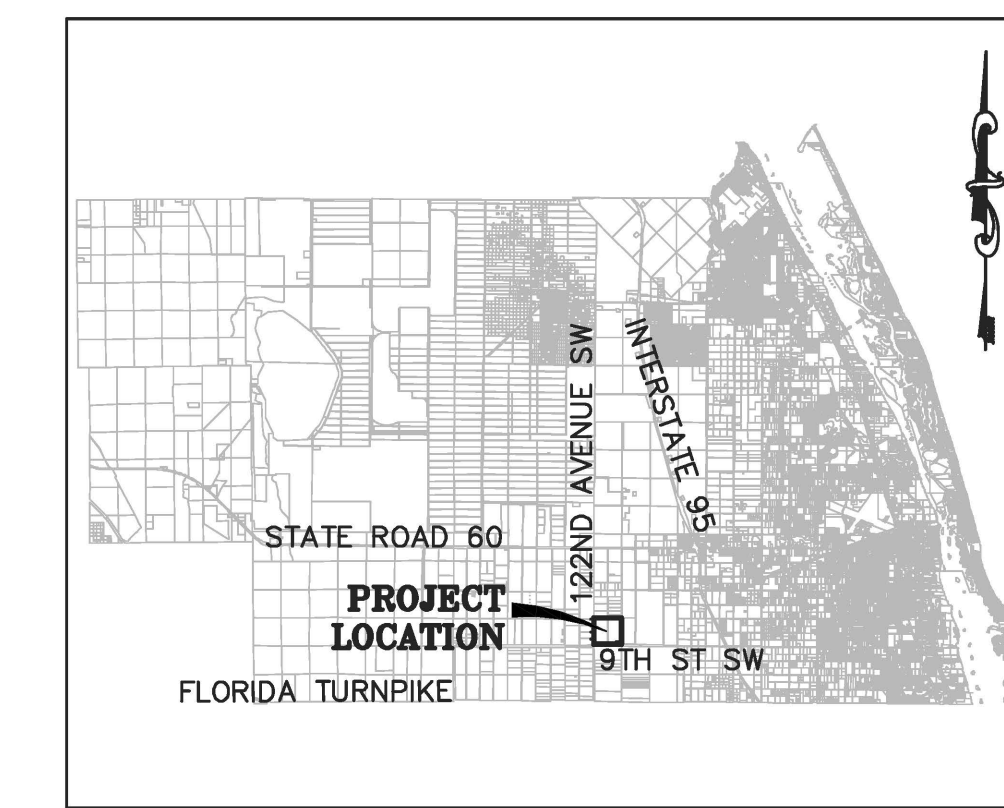
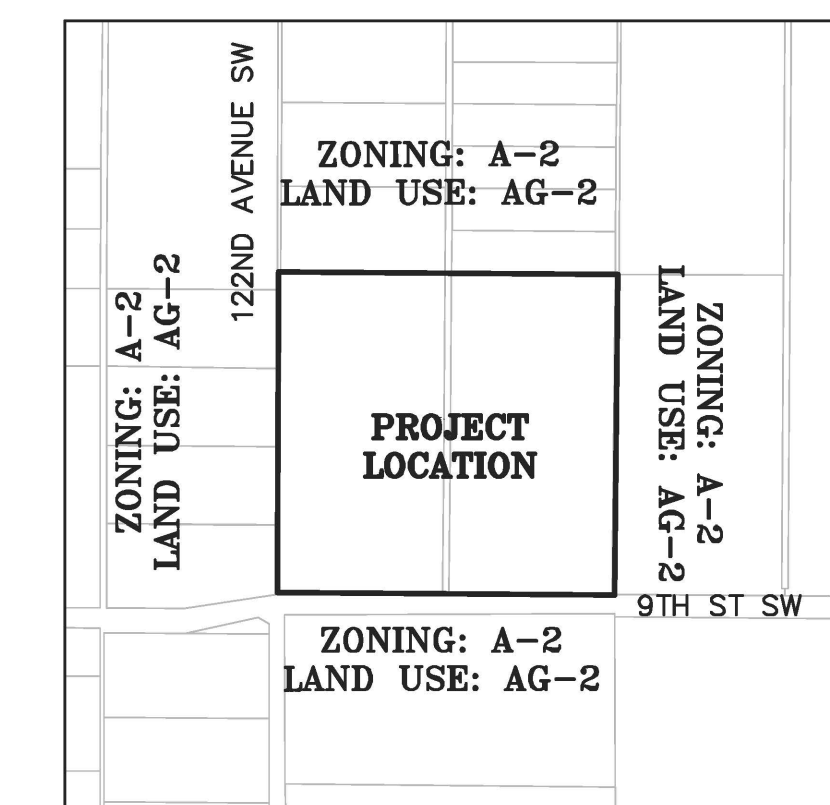


ZONING: A-2 (AGRICULTURAL)
 LAND USE: AG-2 (AGRICULTURAL)



LOCATION MAP n.t.s.

SECTION 19, TOWNSHIP 33 SOUTH, RANGE 38 EAST
 INDIAN RIVER COUNTY, FLORIDA



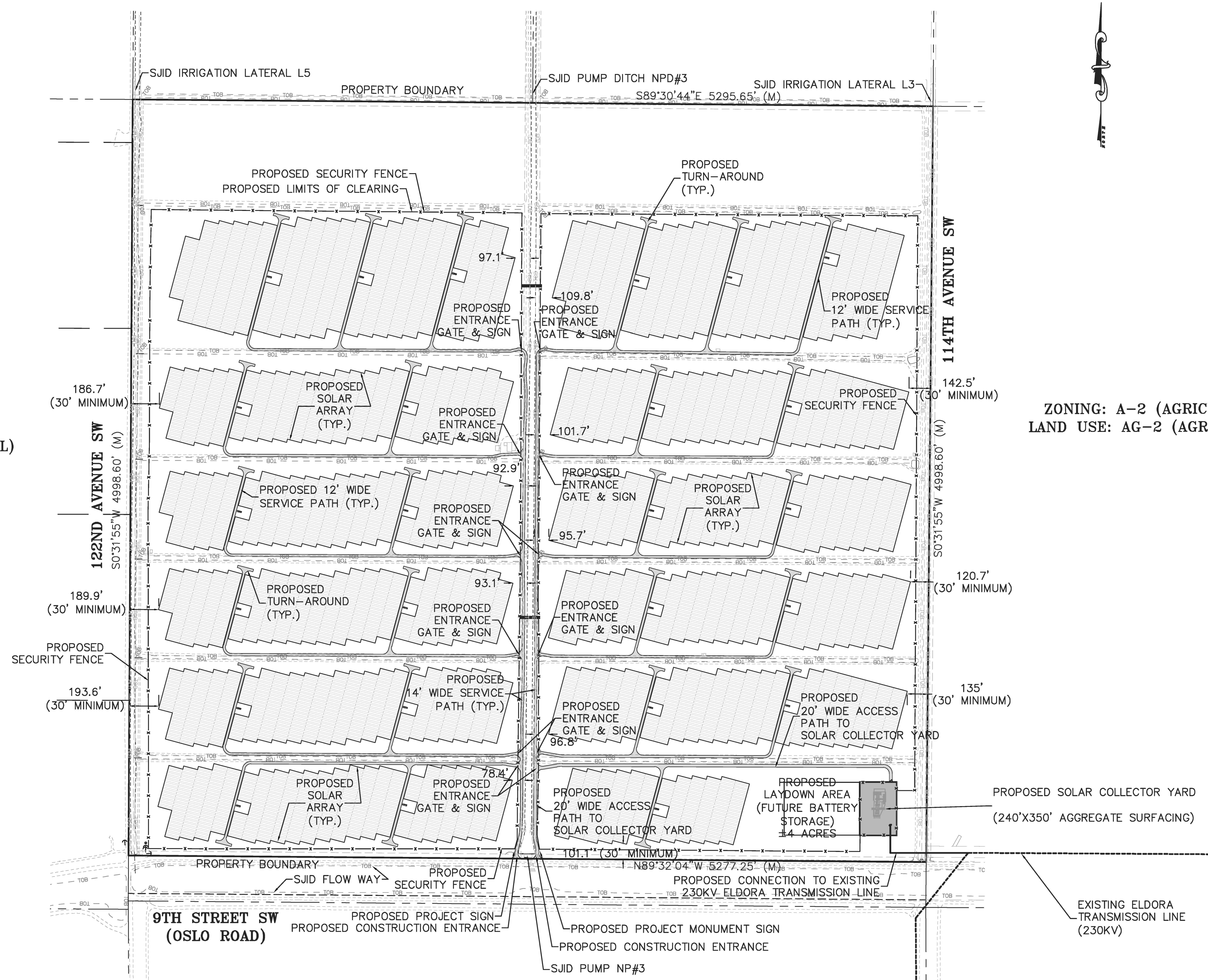
VICINITY MAP 1"=3000'

SECTION 19, TOWNSHIP 33 SOUTH, RANGE 38 EAST
 INDIAN RIVER COUNTY, FLORIDA

ZONING: A-2 (AGRICULTURAL)
 LAND USE: AG-2 (AGRICULTURAL)

ZONING: A-2 (AGRICULTURAL)
 LAND USE: AG-2 (AGRICULTURAL)

ZONING: A-2 (AGRICULTURAL)
 LAND USE: AG-2 (AGRICULTURAL)



P:\Proj\2018\18-060 FPL - Campbell Groves (Indian River County) - 580 acres - ALTA Survey\Eng\18-060 Site Plan Graphic Exhibit 24x36.dwg Plotted: 7/16/2019 1:49 PM By: RAUL NUÑO

COMPUTER FILE REF.	FIELD BK./PG.

CULPEPPER & TERPENING, INC
 CONSULTING ENGINEERS | LAND SURVEYORS
 2980 SOUTH 25th STREET • FORT PIERCE, FLORIDA 34981
 151 SW FLAGLER AVENUE • STUART, FLORIDA 34994
 PHONE: 772-464-3337 • FAX: 772-464-9497 • www.ct-eng.com
 STATE OF FLORIDA CERTIFICATION No. LB 4286

REV.	- REVISIONS -	BY	DATE

DESIGNED	BY	DATE

FPL ORANGE BLOSSOM SOLAR ENERGY CENTER

SITE PLAN

DATE: 7/16/19
HORIZ. SCALE: NA
VERT. SCALE: NA
JOB No. 18-060
SHEET 1 of 1