

HIGH POINTE WEST RESIDENTIAL SUBDIVISION

BEING A PORTION OF TRACTS 2, 3, AND 4, SECTION 9, TOWNSHIP 32 SOUTH, RANGE 39 EAST, ACCORDING TO THE LAST GENERAL PLAT OF LANDS OF THE INDIAN RIVER FARMS COMPANY SUBDIVISION AS RECORDED IN PLAT BOOK 2, PAGE 25, PUBLIC RECORDS OF ST. LUCIE COUNTY, FLORIDA, SAID LANDS NOW LYING AND BEING IN INDIAN RIVER COUNTY, FLORIDA COVENANTS, RESTRICTIONS OR RESERVATIONS AFFECTING THE OWNERSHIP OR USE OF THE PROPERTY SHOWN IN THIS PLAT ARE FILED IN OFFICIAL RECORD BOOK _____, PAGE _____, PUBLIC RECORDS OF INDIAN RIVER COUNTY, FLORIDA.

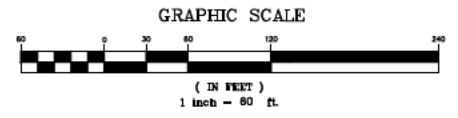
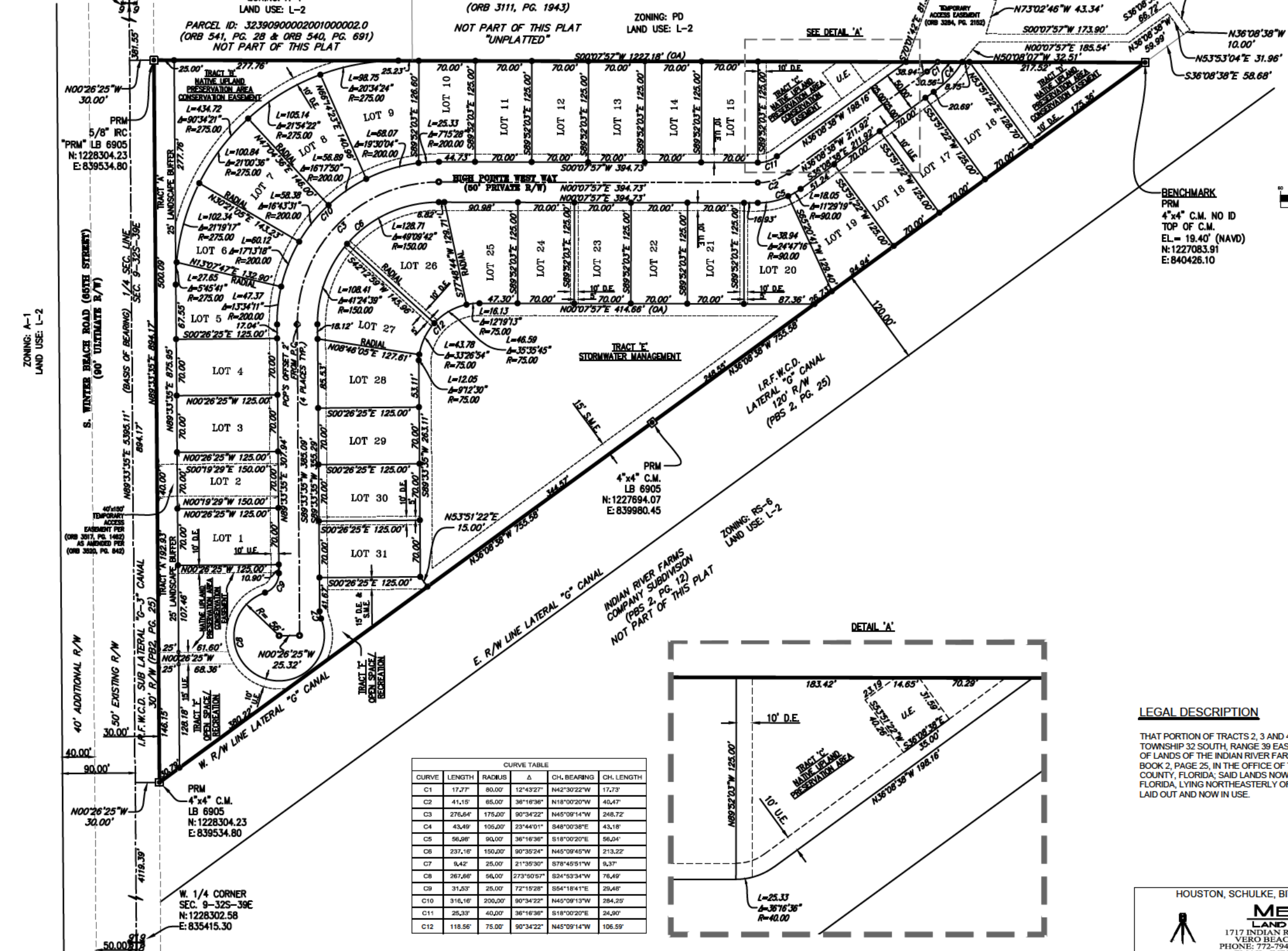
PLAT BOOK _____
PAGE _____
CFN CLERK'S FILE NO. _____

E. 1/4 CORNER
SEC. 9-32S-39E
N: 1228344.02
E: 840810.25

ZONING: A-1
LAND USE: L-2
PARCEL ID: 32390900002001000002.0
(ORB 541, PG. 28 & ORB 540, PG. 691)
NOT PART OF THIS PLAT

PARCEL ID: 32390900002001000001.0
(ORB 3111, PG. 1943)
NOT PART OF THIS PLAT
"UNPLATTED"

ZONING: PD
LAND USE: L-2



- SYMBOL LEGEND**
- ◻ SET 4"x4" CONCRETE PERMANENT REFERENCE MONUMENT (PRM) LB#6905. FOUND MONUMENTS WILL BE NOTED AS FOUND
 - LOT CORNER MARKER 5/8" IRC, LB#6905
 - PERMANENT CONTROL POINT (PCP) LB# 6905
 - POINT OF INTERSECTION

- ABBREVIATIONS**
- P.L.S. = PROFESSIONAL LAND SURVEYOR
 - L.B. = LAND SURVEYING BUSINESS
 - IRFWCD = INDIAN RIVER FARMS WATER CONTROL DISTRICT
 - NAVD = NORTH AMERICAN VERTICAL DATUM
 - ORB = OFFICIAL RECORD BOOK
 - PG. = PAGE
 - PBS = PLAT BOOK ST. LUCIE COUNTY
 - POB = POINT OF BEGINNING
 - POC = POINT OF COMMENCEMENT
 - POI = POINT OF INTERSECTION
 - P.C. = POINT OF CURVATURE
 - PCP = PERMANENT CONTROL POINT
 - PRM = PERMANENT REFERENCE MONUMENT
 - IRC = IRON ROD WITH CAP
 - C.M. = CONCRETE MONUMENT
 - CH. = CHORD
 - L = ARC LENGTH
 - R = RADIUS
 - D.E. = DRAINAGE EASEMENT
 - U.E. = UTILITY EASEMENT
 - S.M.E. = STORMWATER MAINTENANCE EASEMENT
 - R/W = RIGHT OF WAY
 - OA = OVERALL

LEGAL DESCRIPTION

THAT PORTION OF TRACTS 2, 3 AND 4 IN THE SOUTH ONE-HALF OF SECTION 9, TOWNSHIP 32 SOUTH, RANGE 39 EAST, ACCORDING TO THE LAST GENERAL PLAT OF LANDS OF THE INDIAN RIVER FARMS COMPANY SUBDIVISION AS FILED IN PLAT BOOK 2, PAGE 25, IN THE OFFICE OF THE CLERK OF CIRCUIT COURT OF ST. LUCIE COUNTY, FLORIDA; SAID LANDS NOW LYING AND BEING IN INDIAN RIVER COUNTY, FLORIDA, LYING NORTHEASTERLY OF THE LATERAL "G" CANAL RIGHT OF WAY AS LAID OUT AND NOW IN USE.

PREPARED BY: NATHAN LEZNIWICZ
BILLY M. MOODY, PSM #6336
MERIDIAN LAND SURVEYORS LB#6905
DATE OF PREPARATION: OCTOBER 28, 2020

HOUSTON, SCHULKE, BITTLE, & STODDARD, INC. D/B/A
MERIDIAN
LAND SURVEYORS
1717 INDIAN RIVER BLVD, SUITE 201
VERO BEACH, FL. 32960 LB#6905
PHONE: 772-794-1213, FAX: 772-794-1096
EMAIL: INFO@MLS-LB6905.COM

SHEET
3 of 3