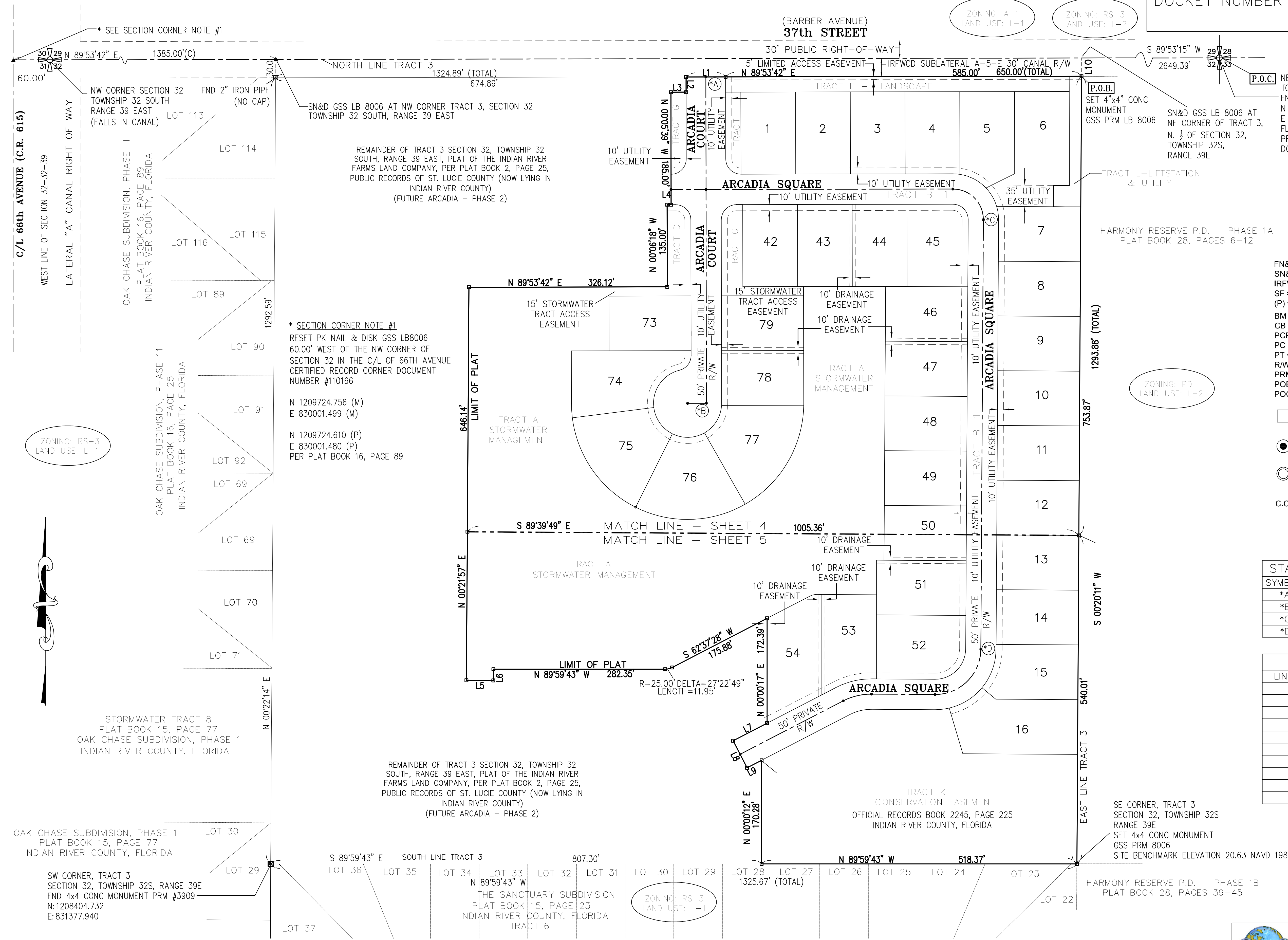


ARCADIA SUBDIVISION – PHASE 1

BEING A REPLAT OF A PORTION OF TRACT 3, SECTION 32, TOWNSHIP 32 SOUTH, RANGE 39 EAST, ACCORDING TO THE PLAT OF "INDIAN RIVER FARMS COMPANY", AS RECORDED IN PLAT BOOK 2, PAGE 25, PUBLIC RECORDS OF ST. LUCIE COUNTY, SAID LAND NOW LYING AND BEING IN INDIAN RIVER COUNTY, FLORIDA.

PLAT BOOK _____
 PAGE _____
 DOCKET NUMBER _____



NE CORNER OF SECTION 32, TOWNSHIP 32S, RANGE 39E
 FND BRASS DISK IN ASPHALT CUT-OUT
 N 1209734.694 NAD83 1990
 E 835360.470 NAD83 1990
 FLORIDA DEPARTMENT OF ENVIRONMENTAL PROTECTION CERTIFIED CORNER RECORD
 DOCUMENT NUMBER #110167

* NOTE:
 STATE PLANE COORDINATES ARE BASED UPON NATIONAL GEODETIC SURVEY CONTROL POINT P.I.D. NUMBER AF3490 FLORIDA STATE PLANE EAST ZONE NAD 83 1990 AND P.I.D. NUMBER AF3419 FLORIDA STATE PLANE EAST ZONE NAD 83 1990

- LEGEND**
- FN&D = FOUND NAIL AND DISK
 - SN&D = SET NAIL AND DISK
 - IRFWCD = INDIAN RIVER FARMS WATER CONTROL DISTRICT
 - SF = SQUARE FOOT
 - (P) = PLAT (D) = DEED (M) = MEASURE
 - BM = SITE BENCHMARK
 - CB = CHORD BEARING
 - PCP = PERMANENT CONTROL POINT
 - PC = POINT OF CURVATURE
 - PT = POINT OF TANGENCY
 - R/W = RIGHT OF WAY
 - PRM = PERMANENT REFERENCE MONUMENT
 - POB = POINT OF BEGINNING
 - POC = POINT OF COMMENCEMENT

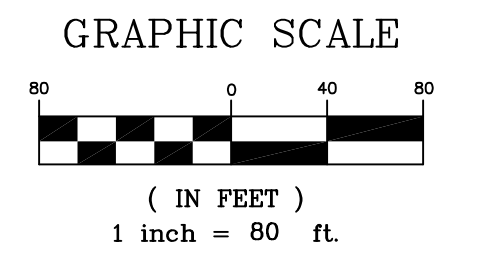
- = SET 4"x4" CONCRETE MONUMENT WITH BRASS DISK GSS PRM LB 8006
- = SET PK NAIL WITH BRASS DISK GSS PCP LB 8006
- = SET 1/2" IRON WITH WITH YELLOW CAP GSS LB 8006
- C.C.R. = FLORIDA DEPARTMENT OF ENVIRONMENTAL PROTECTION CERTIFIED CORNER RECORD

STATE PLANE P.C.P. CHART

SYMBOL	NORTHING	EASTING
*A	1209698.586	832093.610
*B	1209162.107	832094.593
*C	1209464.029	832549.927
*D	1208757.927	832545.782

LINE TABLE

LINE	BEARING	LENGTH
L1	N 89°53'42" E	65.00'
L2	N 00°06'18" W	25.00'
L3	N 89°53'42" E	25.00'
L4	N 89°53'43" E	6.47'
L5	N 89°38'03" W	44.19'
L6	S 00°21'57" W	18.48'
L7	N 62°37'26" E	62.92'
L8	N 27°22'32" W	50.00'
L9	S 62°37'28" W	26.91'
L10	S 00°20'11" W	30.00'

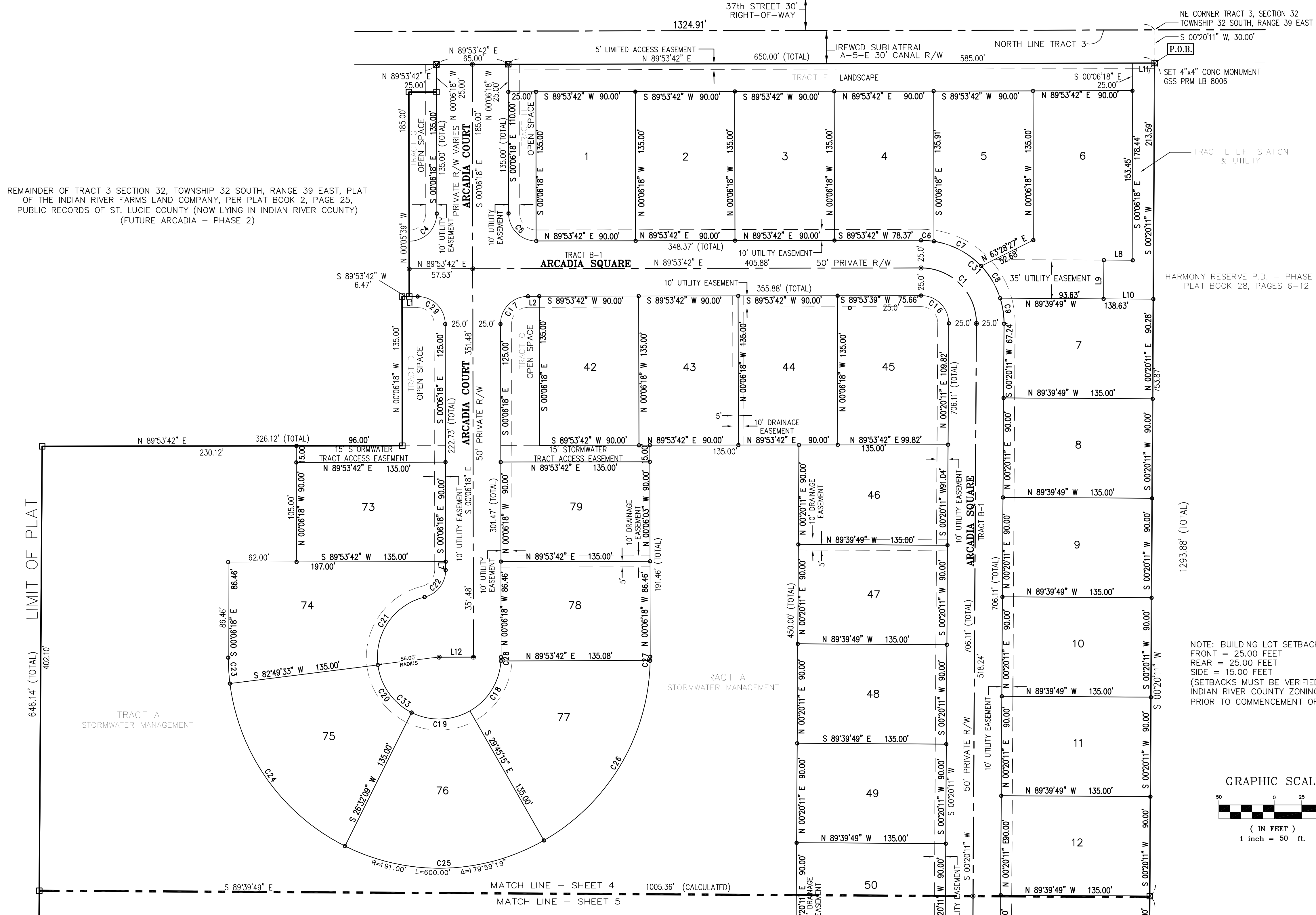


ARCADIA SUBDIVISION – PHASE 1

BEING A REPLAT OF A PORTION OF TRACT 3, SECTION 32, TOWNSHIP 32 SOUTH, RANGE 39 EAST, ACCORDING TO THE PLAT OF "INDIAN RIVER FARMS COMPANY", AS RECORDED IN PLAT BOOK 2, PAGE 25, PUBLIC RECORDS OF ST. LUCIE COUNTY, SAID LAND NOW LYING AND BEING IN INDIAN RIVER COUNTY, FLORIDA.

PLAT BOOK _____
 PAGE _____
 DOCKET NUMBER _____

(BARBER AVENUE)
37th STREET



REMAINDER OF TRACT 3 SECTION 32, TOWNSHIP 32 SOUTH, RANGE 39 EAST, PLAT OF THE INDIAN RIVER FARMS LAND COMPANY, PER PLAT BOOK 2, PAGE 25, PUBLIC RECORDS OF ST. LUCIE COUNTY (NOW LYING IN INDIAN RIVER COUNTY) (FUTURE ARCADIA – PHASE 2)

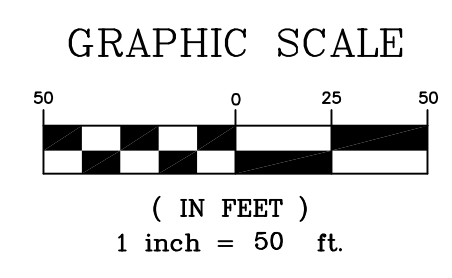
LINE	BEARING	LENGTH
L1	S 89°53'42" W	14.00'
L2	S 89°53'42" W	10.21'
L7	S 00°06'18" E	7.72'
L8	N 89°39'49" W	26.13'
L9	S 00°25'52" W	35.00'
L10	S 89°39'49" W	45.00'
L11	N 89°53'42" E	20.00'
L12	N 89°53'42" E	31.00'

CURVE	LENGTH	RADIUS	DELTA	CHORD	DIRECTION
C1	78.93'	50.00'	90°26'29"	70.99'	N 44°53'03" W
C4	39.30'	25.00'	90°03'51"	35.38'	N 44°55'27" E
C5	39.27'	25.00'	90°00'00"	35.36'	S 45°06'18" E
C6	11.68'	75.00'	8°55'30"	11.67'	N 85°38'44" W
C7	49.28'	75.00'	37°38'45"	48.40'	N 62°21'36" W
C8	34.02'	75.00'	25°59'16"	33.73'	N 30°32'36" W
C9	23.42'	75.00'	17°53'19"	23.32'	N 08°36'18" W
C16	39.46'	25.00'	90°26'29"	35.49'	N 44°53'03" W
C17	39.27'	25.00'	90°00'00"	35.36'	S 44°53'42" W
C18	55.44'	56.00'	56°43'26"	53.21'	N 31°53'02" E
C19	55.02'	56.00'	56°17'24"	52.83'	N 88°23'27" E
C20	55.02'	56.00'	56°17'24"	52.83'	S 35°19'09" E
C21	81.62'	56.00'	83°30'10"	74.58'	S 34°34'39" W
C22	33.35'	25.00'	76°26'02"	30.93'	N 38°06'43" E
C23	23.53'	191.00'	7°03'27"	23.51'	S 03°38'43" E
C24	187.65'	191.00'	56°17'24"	180.19'	S 35°19'09" E
C25	187.65'	191.00'	56°17'24"	180.19'	N 88°23'27" W
C26	197.64'	191.00'	59°17'17"	188.94'	N 30°36'06" E
C27	3.54'	191.00'	1°03'46"	3.54'	N 00°25'35" E
C28	3.55'	56.00'	3°37'37"	3.54'	N 01°42'30" E
C29	39.27'	25.00'	90°00'00"	35.36'	N 45°06'18" W
C31	118.39'	75.00'	90°26'29"	106.48'	N 44°53'03" W
C33	250.63'	56.00'	256°26'02"	88.00'	S 51°53'17" E

LEGEND

- FN&D = FOUND NAIL AND DISK
 - SN&D = SET NAIL AND DISK
 - IRFWCD = INDIAN RIVER FARMS WATER CONTROL DISTRICT
 - SF = SQUARE FOOT
 - (P) = PLAT (D) = DEED (M) = MEASURE
 - BM = SITE BENCHMARK
 - CB = CHORD BEARING
 - PCP = PERMANENT CONTROL POINT
 - PC = POINT OF CURVATURE
 - PT = POINT OF TANGENCY
 - PRM = PERMANENT REFERENCE MONUMENT
 - POB = POINT OF BEGINNING
 - POC = POINT OF COMMENCEMENT
-
- = SET 4"x4" CONCRETE MONUMENT WITH BRASS DISK GSS PRM LB 8006
 - = SET PK NAIL WITH BRASS DISK GSS PCP LB 8006
 - = SET 1/2" IRON WITH WITH YELLOW CAP GSS LB 8006
- C.C.R. = FLORIDA DEPARTMENT OF ENVIRONMENTAL PROTECTION CERTIFIED CORNER RECORD

NOTE: BUILDING LOT SETBACKS AS FOLLOWS:
 FRONT = 25.00 FEET
 REAR = 25.00 FEET
 SIDE = 15.00 FEET
 (SETBACKS MUST BE VERIFIED WITH INDIAN RIVER COUNTY ZONING DEPARTMENT PRIOR TO COMMENCEMENT OF CONSTRUCTION.)



REVISION	DATE	DESCRIPTION
1	06/02/17	IRC COMMENTS
2	06/21/17	IRC ATTORNEY
3	08/04/17	IRC COMMENTS
4	09/14/17	IRC COMMENTS

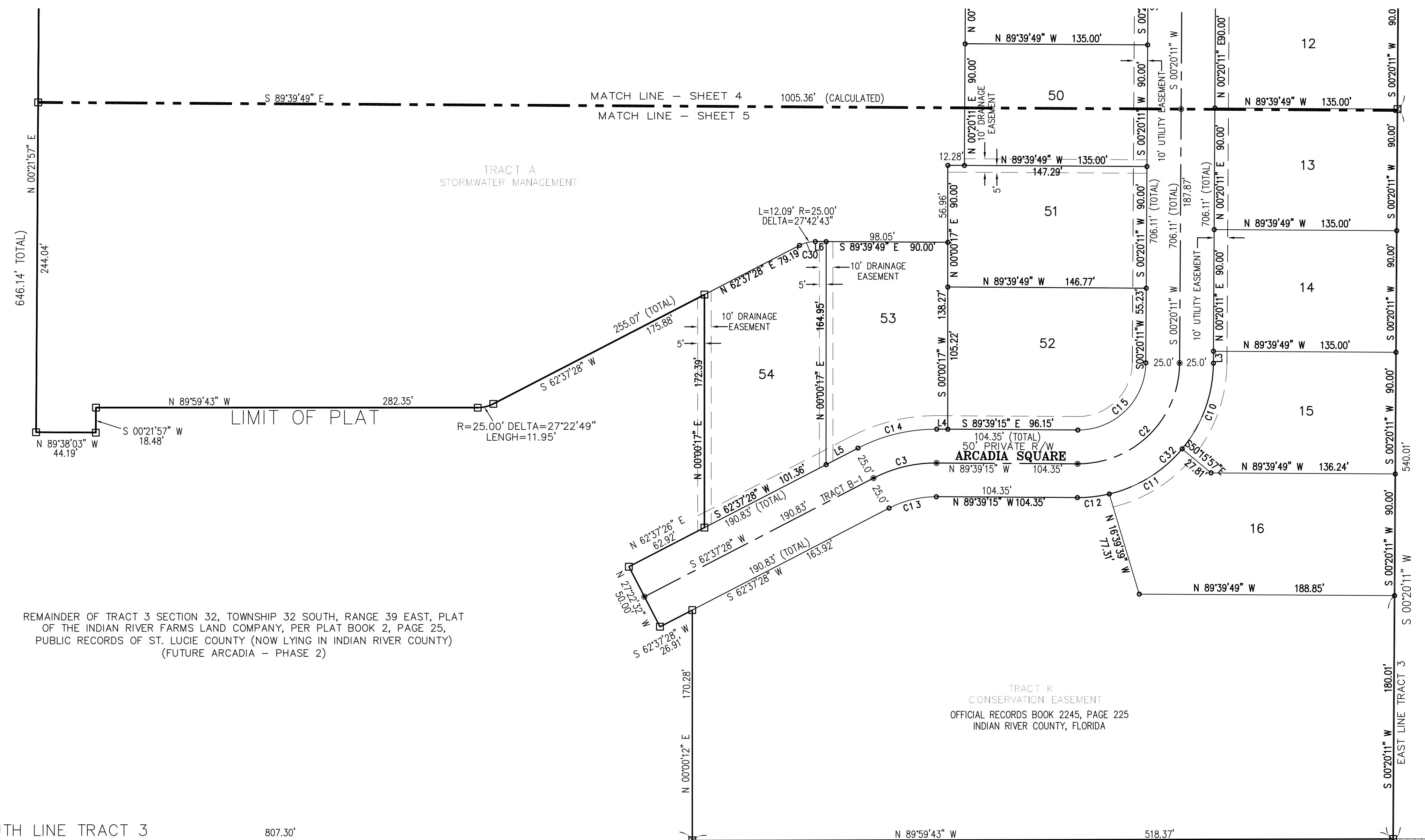


SHEET 4 OF 5
Surveying and Mapping, LLC
 2945 20th St.
 Vero Beach, FL 32960
 321-914-3978

ARCADIA SUBDIVISION – PHASE 1

BEING A REPLAT OF A PORTION OF TRACT 3, SECTION 32, TOWNSHIP 32 SOUTH, RANGE 39 EAST, ACCORDING TO THE PLAT OF "INDIAN RIVER FARMS COMPANY", AS RECORDED IN PLAT BOOK 2, PAGE 25, PUBLIC RECORDS OF ST. LUCIE COUNTY, SAID LAND NOW LYING AND BEING IN INDIAN RIVER COUNTY, FLORIDA.

PLAT BOOK _____
 PAGE _____
 DOCKET NUMBER _____

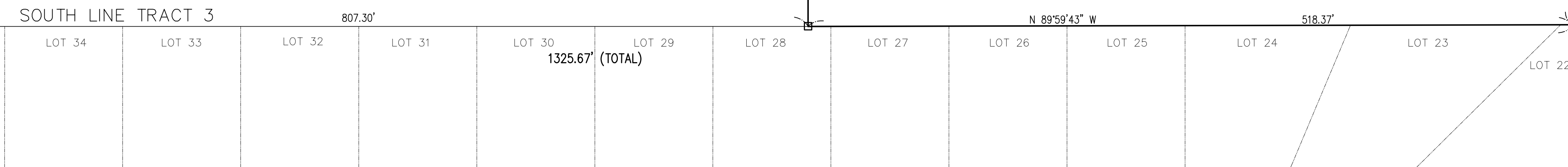


LINE TABLE		
LINE	BEARING	LENGTH
L3	S 00°20'11" W	8.83'
L4	S 89°39'15" E	8.20'
L5	S 62°37'28" W	26.55'
L6	S 89°59'43" E	8.04'

CURVE TABLE					
CURVE	LENGTH	RADIUS	DELTA	CHORD	DIRECTION
C2	117.83'	75.00'	90°00'34"	106.08'	N 45°20'28" E
C3	48.39'	100.01'	27°43'17"	47.92'	S 76°29'06" W
C10	68.77'	100.00'	39°23'52"	67.42'	N 20°02'07" E
C11	64.54'	100.00'	36°58'32"	63.42'	N 58°13'19" E
C12	23.80'	100.00'	13°38'10"	23.74'	N 83°31'40" E
C13	36.29'	75.00'	27°43'17"	35.94'	S 76°29'07" W
C14	60.48'	125.01'	27°43'17"	59.89'	S 76°29'07" W
C15	78.55'	50.00'	90°00'34"	70.72'	N 45°20'28" E
C30	12.09'	25.00'	27°42'43"	11.97'	S 76°28'50" W
C32	157.10'	100.00'	90°00'34"	141.44'	N 45°20'28" E

REMAINDER OF TRACT 3 SECTION 32, TOWNSHIP 32 SOUTH, RANGE 39 EAST, PLAT OF THE INDIAN RIVER FARMS LAND COMPANY, PER PLAT BOOK 2, PAGE 25, PUBLIC RECORDS OF ST. LUCIE COUNTY (NOW LYING IN INDIAN RIVER COUNTY) (FUTURE ARCADIA – PHASE 2)

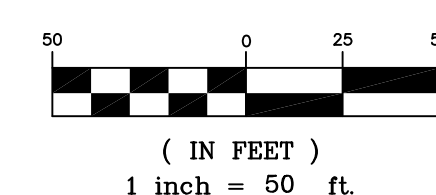
HARMONY RESERVE P.D. – PHASE 1A
 PLAT BOOK 28, PAGES 6–12



THE SANCTUARY SUBDIVISION
 PLAT BOOK 15, PAGE 23
 INDIAN RIVER COUNTY, FLORIDA
 TRACT 6

NOTE: BUILDING LOT SETBACKS AS FOLLOWS:
 FRONT = 25.00 FEET
 REAR = 25.00 FEET
 SIDE = 15.00 FEET
 (SETBACKS MUST BE VERIFIED WITH INDIAN RIVER COUNTY ZONING DEPARTMENT PRIOR TO COMMENCEMENT OF CONSTRUCTION.)

GRAPHIC SCALE

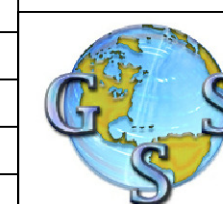


LEGEND

- FN&D = FOUND NAIL AND DISK
- SN&D = SET NAIL AND DISK
- IRFWCD = INDIAN RIVER FARMS WATER CONTROL DISTRICT
- SF = SQUARE FOOT
- (P) = PLAT (D) = DEED (M) = MEASURE
- BM = SITE BENCHMARK
- CB = CHORD BEARING
- PCP = PERMANENT CONTROL POINT
- PC = POINT OF CURVATURE
- PT = POINT OF TANGENCY
- R/W = RIGHT OF WAY
- PRM = PERMANENT REFERENCE MONUMENT
- POB = POINT OF BEGINNING
- POC = POINT OF COMMENCEMENT
- = SET 4"x4" CONCRETE MONUMENT WITH BRASS DISK GSS PRM LB 8006
- = SET PK NAIL WITH BRASS DISK GSS PCP LB 8006
- = SET 1/2" IRON WITH WITH YELLOW CAP GSS LB 8006
- C.C.R. = FLORIDA DEPARTMENT OF ENVIRONMENTAL PROTECTION CERTIFIED CORNER RECORD

REVISION	DATE	DESCRIPTION
1	06/02/17	IRC COMMENTS
2	06/21/17	IRC ATTORNEY
3	08/04/17	IRC COMMENTS
4	09/14/17	IRC COMMENTS

SHEET 5 OF 5



Surveying and Mapping, LLC
 2945 20th St.
 Vero Beach, FL 32960
 321-914-3978