

District 19

New Medical Examiner Facility

March 25, 2025



AGENDA

Introductions

Scope of Work

ME Design

Project Location

Project Floor Plans

Project Renderings

Next Steps

INTRODUCTIONS



Johnnie Lohrum Jr. RA, LEED
President / Project Manager
24 Years of Experience
j|2 ARCHITECTURE | LONGWOOD

DAY TO DAY CONTACT

100% INVOLVEMENT WITH PROJECT

24 years of municipal experience

LOCAL ENGINEERING TEAM



LANDSCAPE
CIVIL
ENVIRONMENTAL



MEP / FIRE
SECURITY



STRUCTURAL



LANDSCAPE



INTERNATIONAL
COST
ESTIMATING

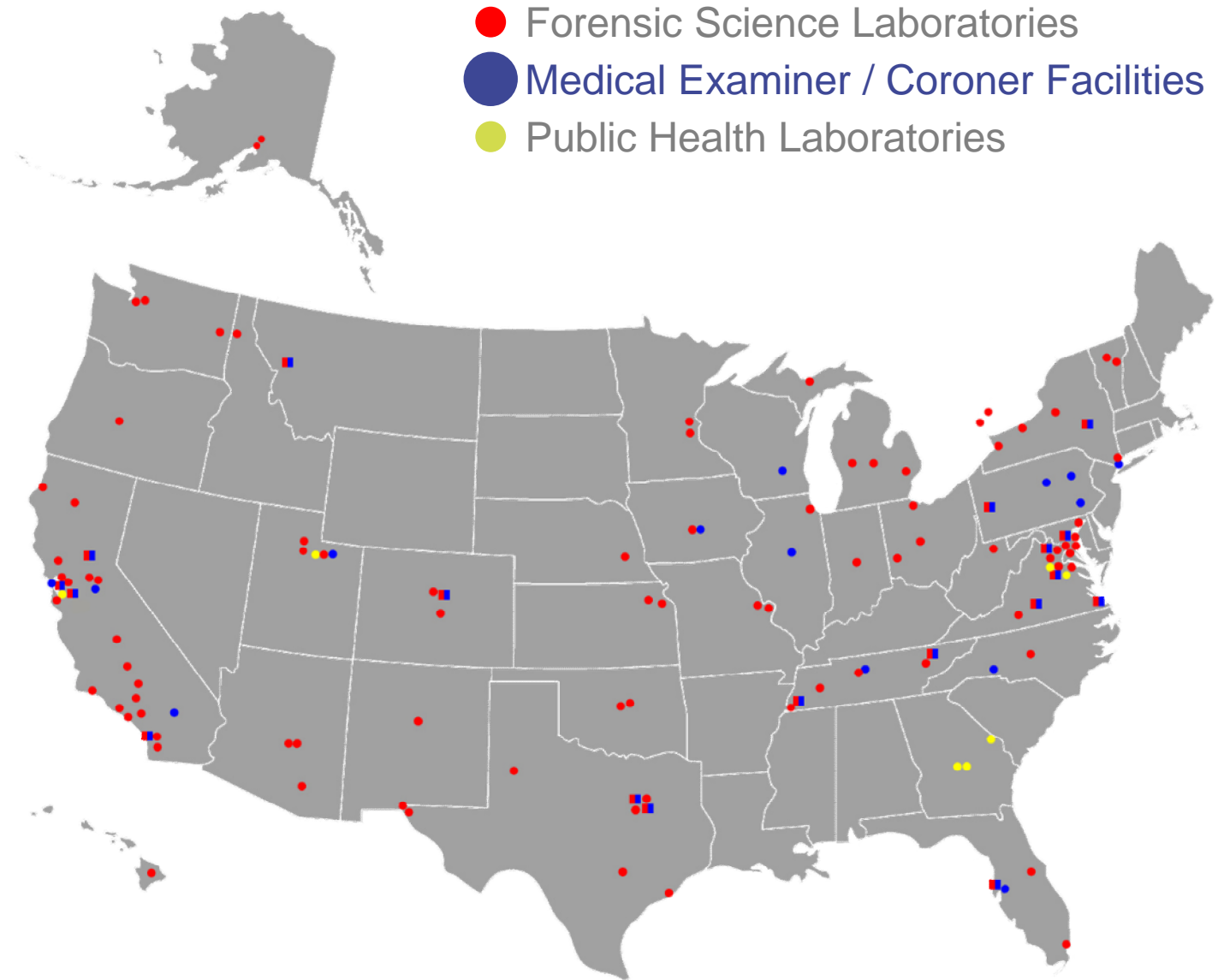


NATIONAL FIRM

165 Forensic Labs

270 Public Safety Facilities

50 Medical Examiner / Coroner Facilities



LOCAL EXPERIENCE



Fort Pierce Central High School



Haver L. Fern Center



South County Stadium



Doug M. Anderson EOC



Treasure Coast High School

300 +

Team Public Safety Projects

Hurricane Shelters

Essential Florida Facilities

Operation Centers

MEP = 10 ME Projects (350k sf)

PROJECT SCOPE



100% Design Thru Construction

Scope of Services:

Architectural Design
Interior Architectural Design
MEP/F Engineering
Feasibility Studies / Analysis
Facility Programming
Civil Engineering
Master Planning
3D Visualizations / Rendering Services
Soils Investigations / Reports

Surveys-Topographic / Boundary
Measured Drawings of Existing Facilities

Structural Engineering
Code Analysis
Environmental Assessments
Constructability Review Participation &
Landscape / Irrigation
Security Design
Systems & Communications Design
Traffic Design & Analysis
Detailed Cost Estimates
Existing Site Utility Infrastructure

PARTICIPANTS

Medical Examiner

St. Lucie County



Indian River County

Martin County

Okeechobee County

NATIONAL FORENSIC ARCHITECTURE | Design Criteria

1

ODOR
MITIGATION

2

FLEXIBILITY
WITH
EXPANDABILITY

3

COORDINATE
NATURAL LITE
WITH
VENTILATION

4

ADAPTABILITY

5

CONTAINMENT

6

SIGHT LINES

7

PUBLIC &
STAFF
SAFETY

NAME ACCREDITATION



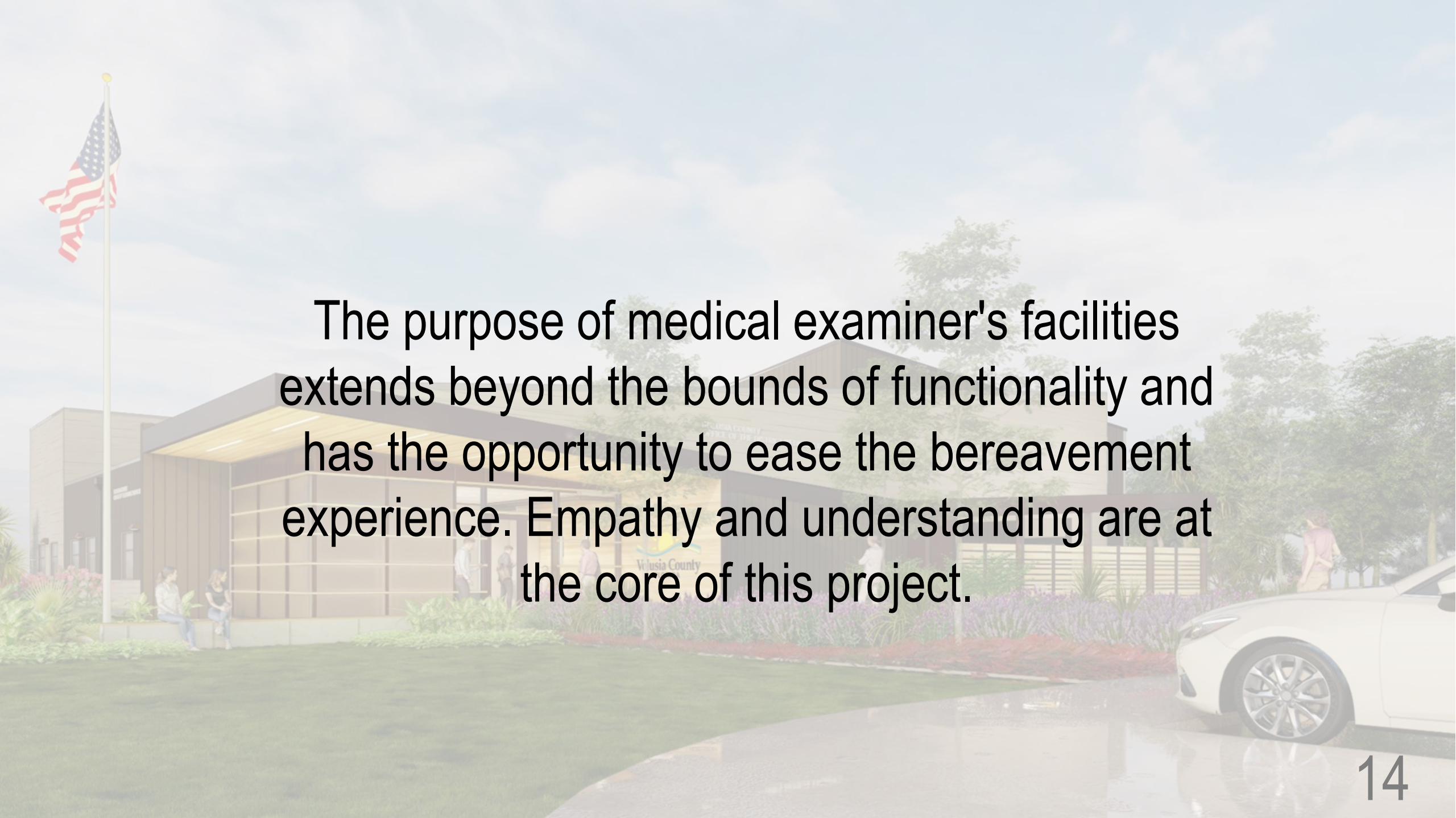










An architectural rendering of a modern medical examiner's facility. The building features a prominent overhanging entrance with a warm, yellowish glow. To the left, an American flag flies on a tall pole. In the foreground, a white car is partially visible on the right. The scene is set on a green lawn with some landscaping, and a few stylized human figures are scattered around the building. The sky is a soft, hazy blue with light clouds. The text is overlaid in the center of the image.

The purpose of medical examiner's facilities extends beyond the bounds of functionality and has the opportunity to ease the bereavement experience. Empathy and understanding are at the core of this project.

NEEDS ASSESSMENT / PROGRAMMING

Original Data Gathered 2023.11.13

OFFICE OF THE DISTRICT MEDICAL EXAMINER DISTRICT 19 - ST. LUCIE COUNTY, FLORIDA

Area Totals 2046	Area Totals 2056	Remarks
20 Year Needs Driven Plan	30 Year Needs Driven Plan	Code required 160mph Wind Resistant Facility Required

Staffing					Current		2026		2046		2056		Current at 2023- 582 Autopsies, 112 Exams	
Public Entry													1,423	1,505
Administration and Shared Office Area	15	18	22	25									4,881	5,272
Autopsy Complex	4	6	7	7									8,518	9,391
Sally Port/Storage													3,318	3,568
Total Adjusted Net Square Footage													18,139	19,735
Structural/Wall Design Factor	10%	x NSF											1,814	1,974
MEP Factor	17%	x NSF											3,084	3,355
Recommended Site Range													2.0	2.0 Acres
Total Staffing	19	24	29	32	Total Adjusted Gross Square Footage							23,036	25,064	

Gross Area per Staff:	794	783	Typically 700-1000 SF per person
-----------------------	-----	-----	----------------------------------

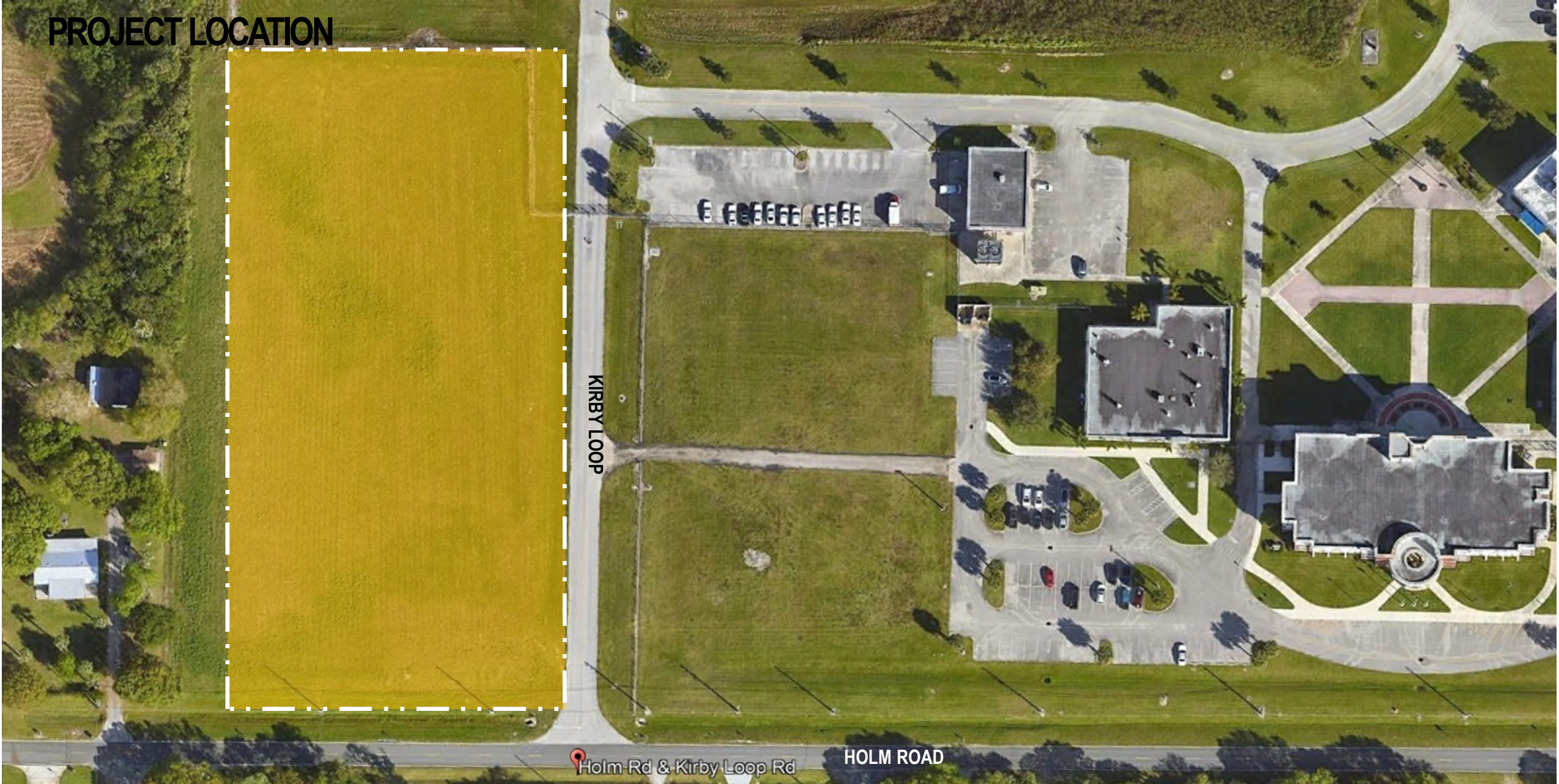
Yellow indicates a defined room or space

Light Gray indicates area to satisfy move-in needs

Blue indicates areas driven by the 20 year needs for the facility

25,064 sf

PROJECT LOCATION



KIRBY LOOP

Holm Rd & Kirby Loop Rd

HOLM ROAD



PROJECT SITE PLAN

Civic, Inviting Public Entry

Expansion Capability

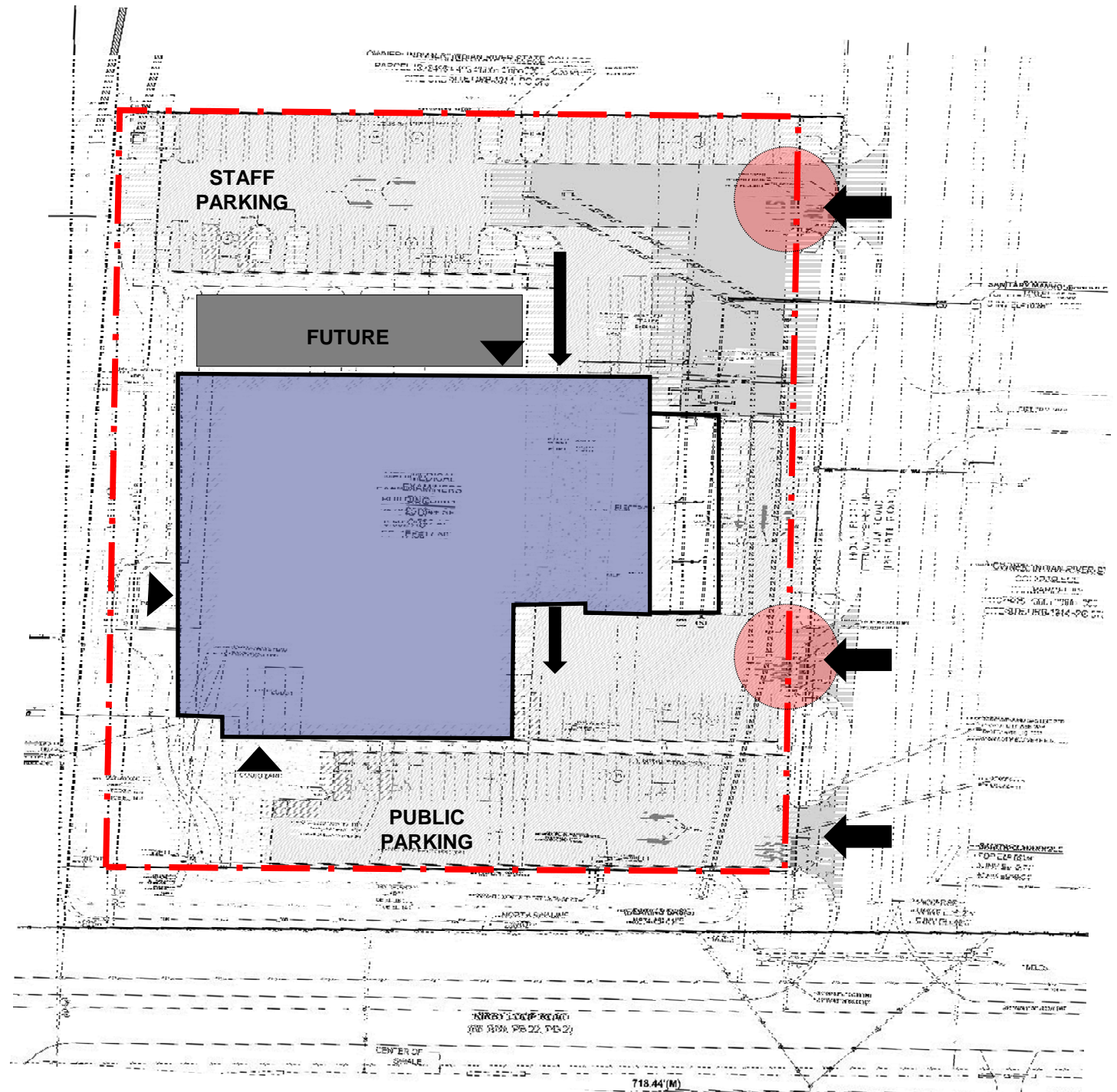
Site Screening / Controlled Access

Secure Staff vs. Public Parking

Private Decedent Receiving

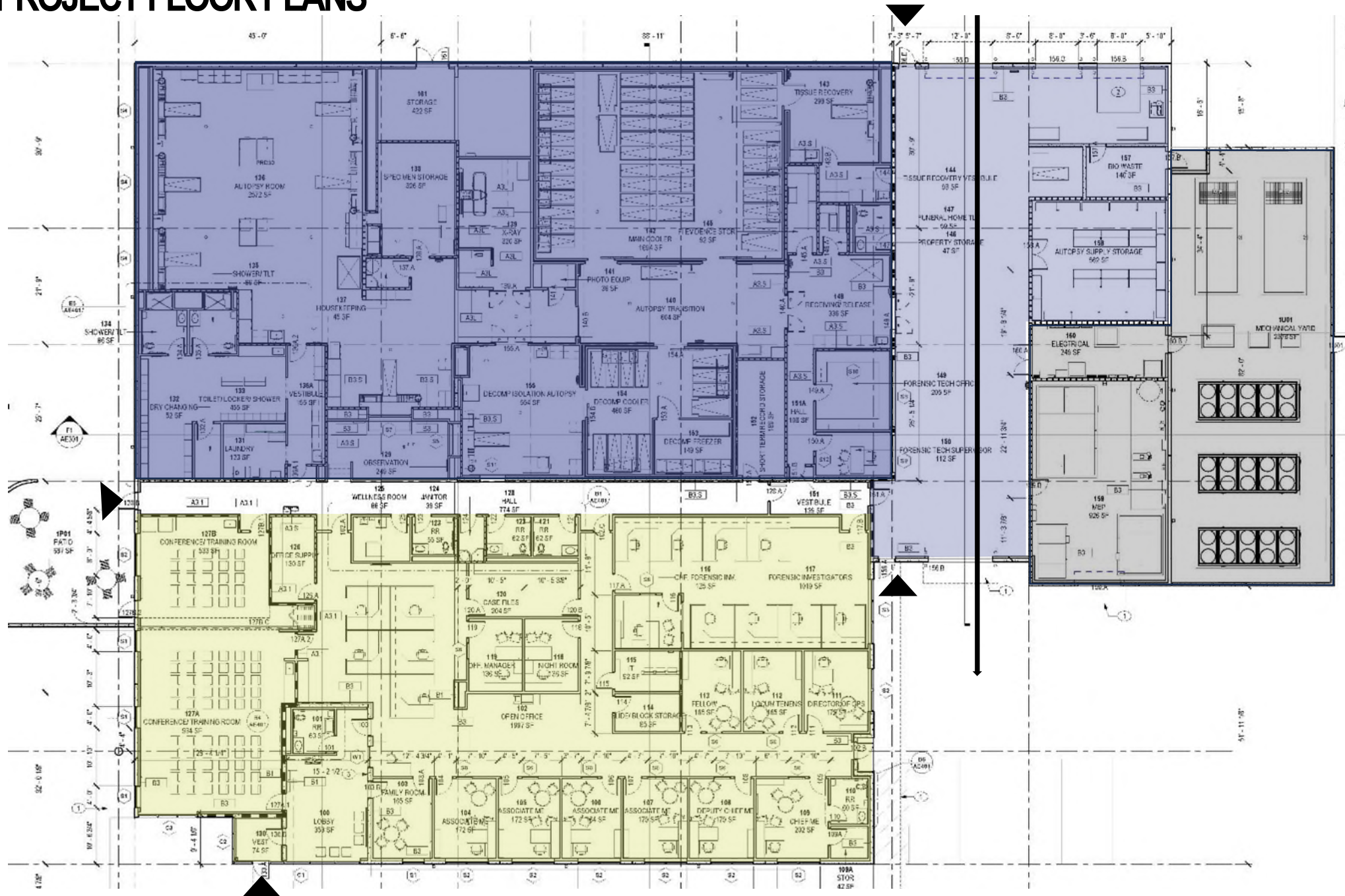
Single Direction, Enclosed Sally Port

Mass Disaster



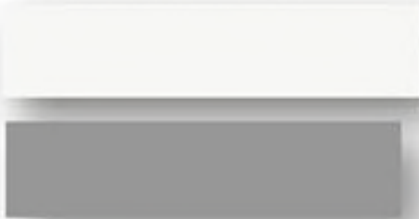


PROJECT FLOOR PLANS

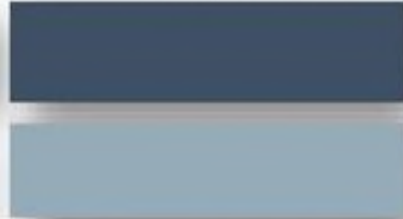


PROJECT INTERIORS

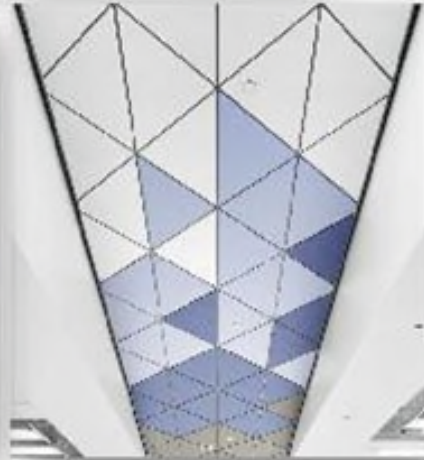
TYPICAL WALL PAINT COLOR



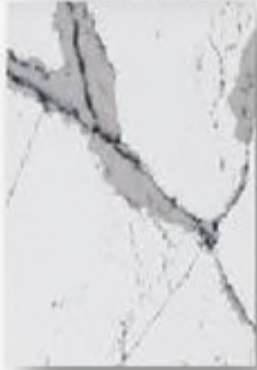
ACCENT WALL PAINT COLOR



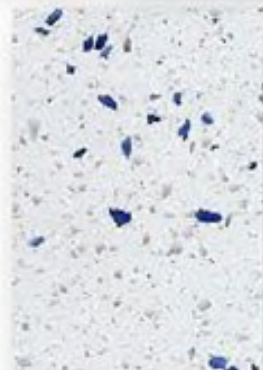
ACCENT WALLS AND CEILING SYSTEM



CEILING SYSTEM



OPTION 1 QUARTZ
COUNTERTOPS



POURED TERRAZZO
FRONT OF HOUSE W/BASE



RESTROOMS FLOOR
& ACCENT WALL TILE



OPTION 2 QUARTZ
COUNTERTOPS



LIGHT WOOD COLOR
MILLWORK AND LVT



POURED TERRAZZO
BACK OF HOUSE W/ COVE BASE

PROJECT RENDERINGS



DISTRICT 19 MEDICAL EXAMINERS

PROJECT RENDERINGS



DISTRICT 19 MEDICAL EXAMINERS

PROJECT RENDERINGS



PROJECT RENDERINGS



NEXT STEPS

100% Construction Documents—2/5/2025

Submittal to Building Department—IRSC

Contractor Pre-Qualification RFQ—County

Contractor Short Listing

Project Bidding

Construction—Est. 14-16 Months

