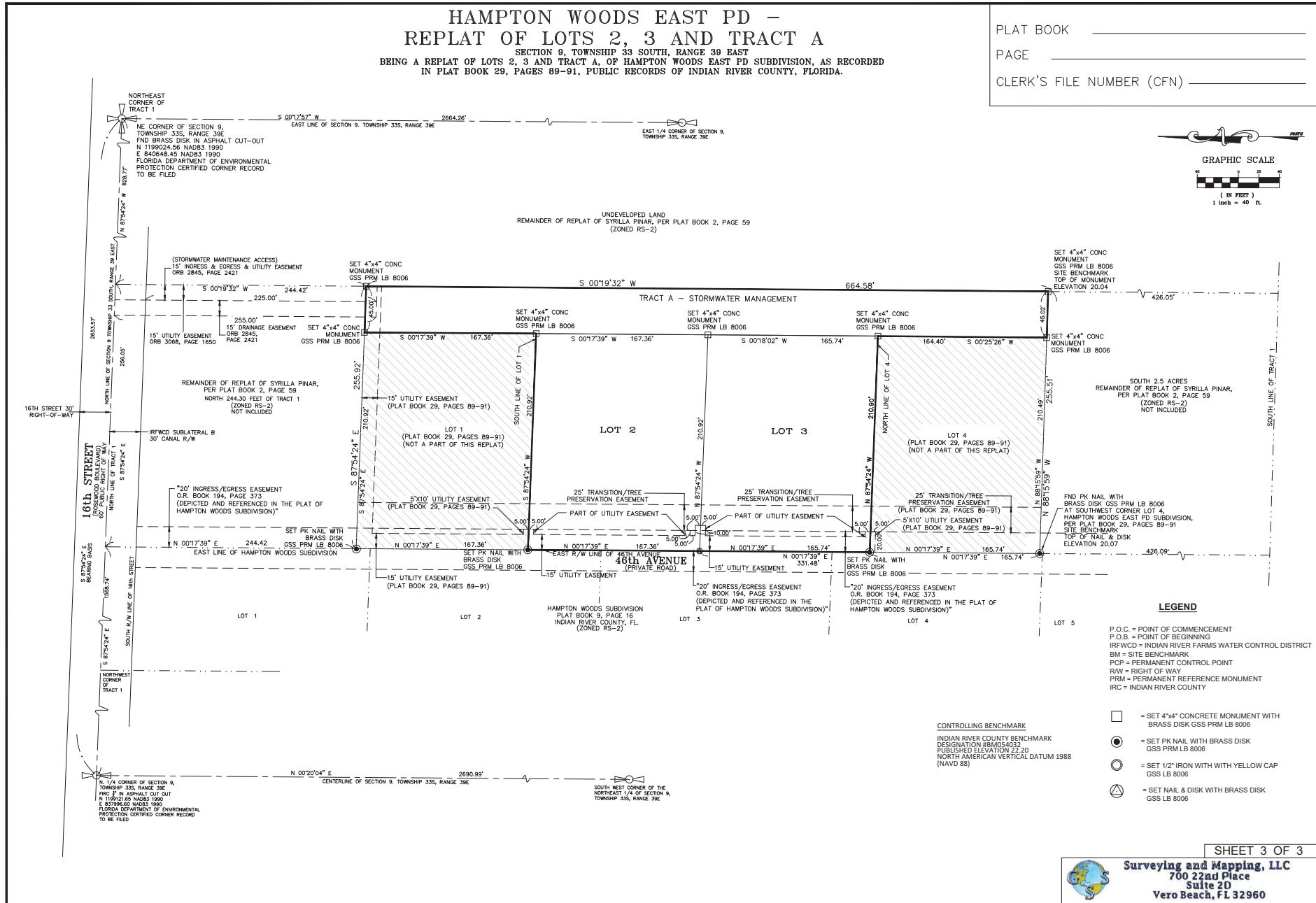
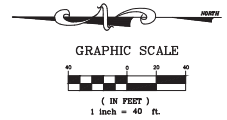


**HAMPTON WOODS EAST PD -  
REPLAT OF LOTS 2, 3 AND TRACT A**  
SECTION 9, TOWNSHIP 33S, RANGE 39E EAST  
BEING A REPLAT OF LOTS 2, 3 AND TRACT A OF HAMPTON WOODS EAST PD SUBDIVISION, AS RECORDED  
IN PLAT BOOK 29, PAGES 89-91, PUBLIC RECORDS OF INDIAN RIVER COUNTY, FLORIDA.

PLAT BOOK \_\_\_\_\_  
PAGE \_\_\_\_\_  
CLERK'S FILE NUMBER (CFN) \_\_\_\_\_



- LEGEND**
- P.O.C. = POINT OF COMMENCEMENT
  - P.O.B. = POINT OF BEGINNING
  - IRFWCD = INDIAN RIVER FARMS WATER CONTROL DISTRICT
  - BM = SITE BENCHMARK
  - PCP = PERMANENT CONTROL POINT
  - R/W = RIGHT OF WAY
  - PRM = PERMANENT REFERENCE MONUMENT
  - IRC = INDIAN RIVER COUNTY

- CONTROLLING BENCHMARK**  
INDIAN RIVER COUNTY BENCHMARK  
DESIGNATION #IRMS4032  
PUBLISHED ELEVATION 22.20  
NORTH AMERICAN VERTICAL DATUM 1988  
(NAVD 88)
- = SET 4"x4" CONCRETE MONUMENT WITH BRASS DISK GSS PRM LB 8006
  - = SET PK NAIL WITH BRASS DISK GSS PRM LB 8006
  - = SET 1/2" IRON WITH WITH YELLOW CAP GSS LB 8006
  - = SET NAIL & DISK WITH BRASS DISK GSS LB 8006