

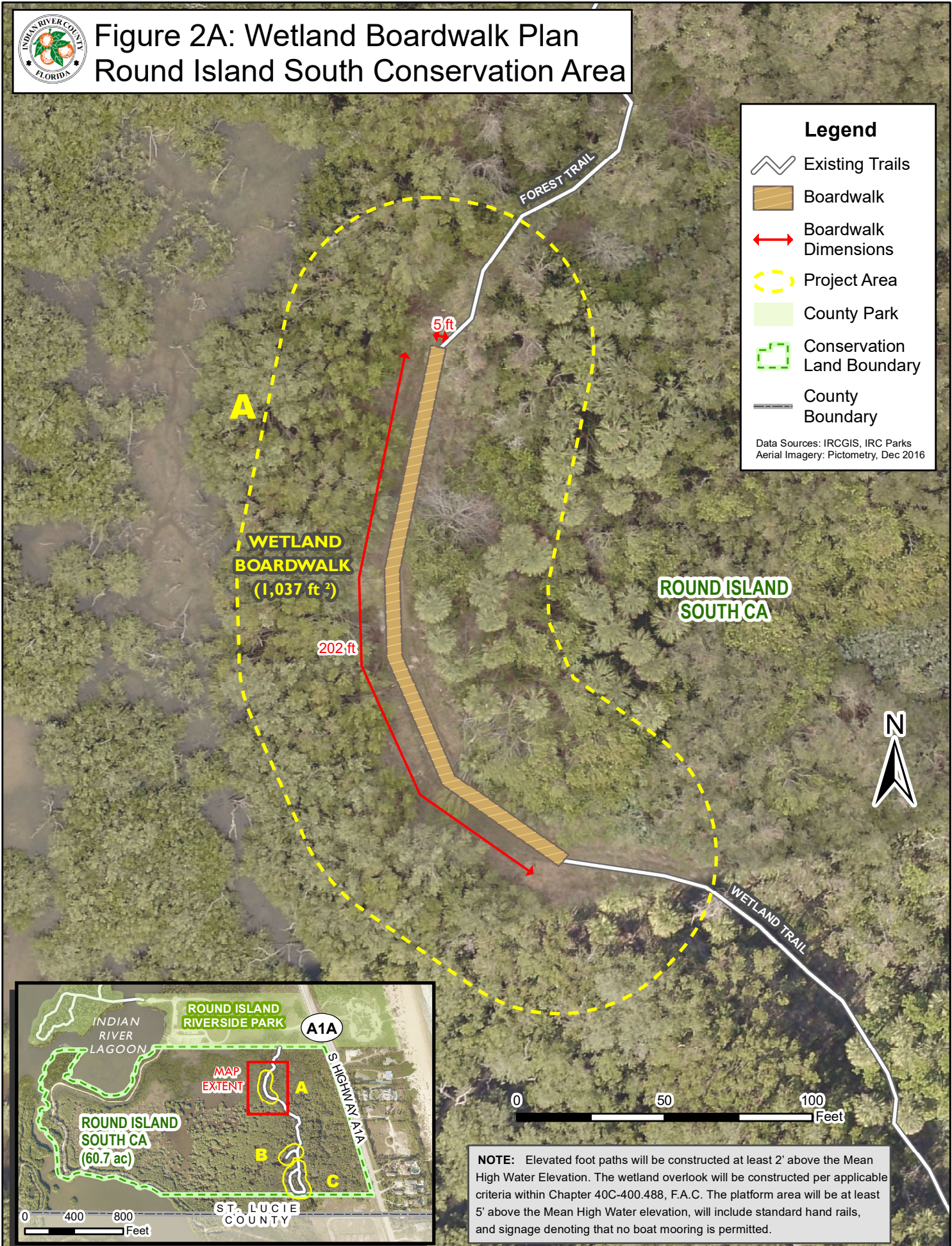


# Figure 2A: Wetland Boardwalk Plan Round Island South Conservation Area

**Legend**

- Existing Trails
- Boardwalk
- Boardwalk Dimensions
- Project Area
- County Park
- Conservation Land Boundary
- County Boundary

Data Sources: IRCGIS, IRC Parks  
 Aerial Imagery: Pictometry, Dec 2016



**NOTE:** Elevated foot paths will be constructed at least 2' above the Mean High Water Elevation. The wetland overlook will be constructed per applicable criteria within Chapter 40C-400.488, F.A.C. The platform area will be at least 5' above the Mean High Water elevation, will include standard hand rails, and signage denoting that no boat mooring is permitted.



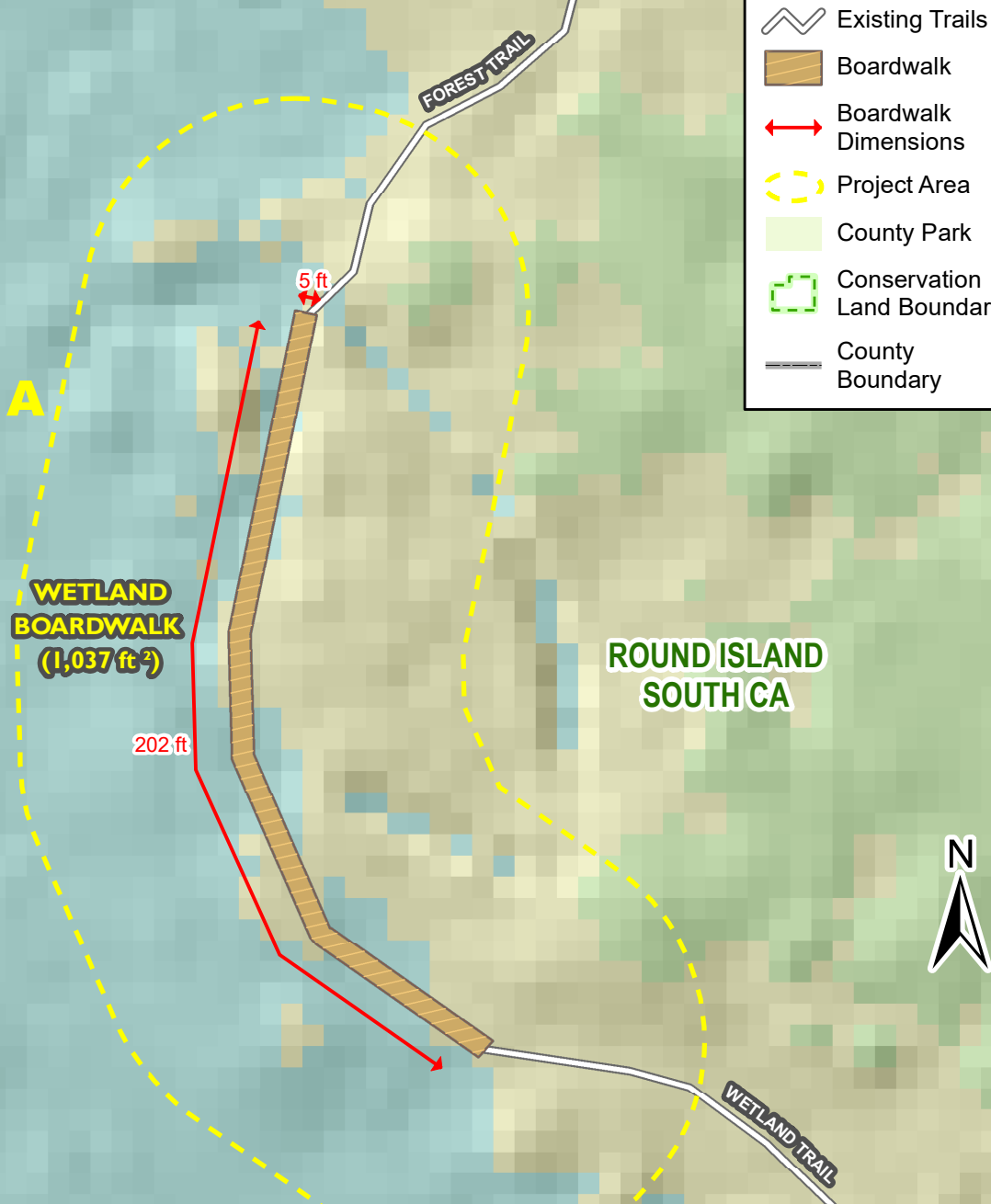
# Figure 2A: Wetland Boardwalk Plan Round Island South Conservation Area

**Legend**

- Existing Trails
- Boardwalk
- Boardwalk Dimensions
- Project Area
- County Park
- Conservation Land Boundary
- County Boundary

**Elevation (Feet, NAVD88, 5 ft grid)**

- < 1
- 1 - 3
- 3 - 8
- 8 - 13
- > 13



**NOTE:** Elevated foot paths will be constructed at least 2' above the Mean High Water Elevation. The wetland overlook will be constructed per applicable criteria within Chapter 40C-400.488, F.A.C. The platform area will be at least 5' above the Mean High Water elevation, will include standard hand rails, and signage denoting that no boat mooring is permitted.

Data Sources: IRCGIS, IRC Parks, 2017; Elevation Data: 2007 FDEM LIDAR  
Aerial Imagery: Pictometry, December 2016



# Figure 2B: Wetland Boardwalk Plan Round Island South Conservation Area



**ROUND ISLAND  
SOUTH CA**

**B**

**OBSERVATION  
PLATFORM  
(589 ft<sup>2</sup>)**

91 ft

26 ft

44 ft

12 ft

10 ft

**C**

FOREST TRAIL

**Legend**

- Existing Trails
- Boardwalk
- Boardwalk Dimensions
- Project Area
- County Park
- Conservation Land Boundary
- County Boundary

0 50 100 Feet

**NOTE:** Elevated foot paths will be constructed at least 2' above the Mean High Water Elevation. The wetland overlook will be constructed per applicable criteria within Chapter 40C-400.488, F.A.C. The platform area will be at least 5' above the Mean High Water elevation, will include standard hand rails, and signage denoting that no boat mooring is permitted.

Data Sources: IRCCGIS, IRC Parks, Aerial Imagery, Picometry, Dec 2016

INDIAN RIVER LAGOON

ROUND ISLAND RIVERSIDE PARK

A1A

S HIGHWAY A1A

ROUND ISLAND SOUTH CA (60.7 ac)

MAP EXTENT

ST. LUCIE COUNTY

0 400 800 Feet



# Figure 2B: Wetland Boardwalk Plan Round Island South Conservation Area

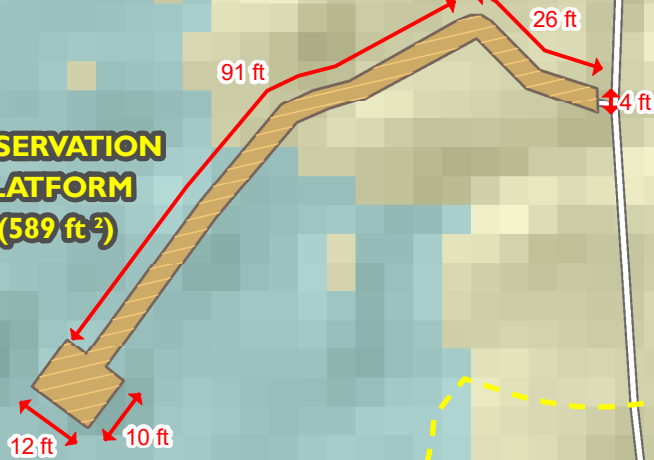


Elevation (Feet, NAVD88, 5 ft grid)

- < 1
- 1 - 3
- 3 - 8
- 8 - 13
- > 13

## ROUND ISLAND SOUTH CA

### OBSERVATION PLATFORM (589 ft<sup>2</sup>)



### Legend

- Existing Trails
- Boardwalk
- Boardwalk Dimensions
- Project Area
- County Park
- Conservation Land Boundary
- County Boundary



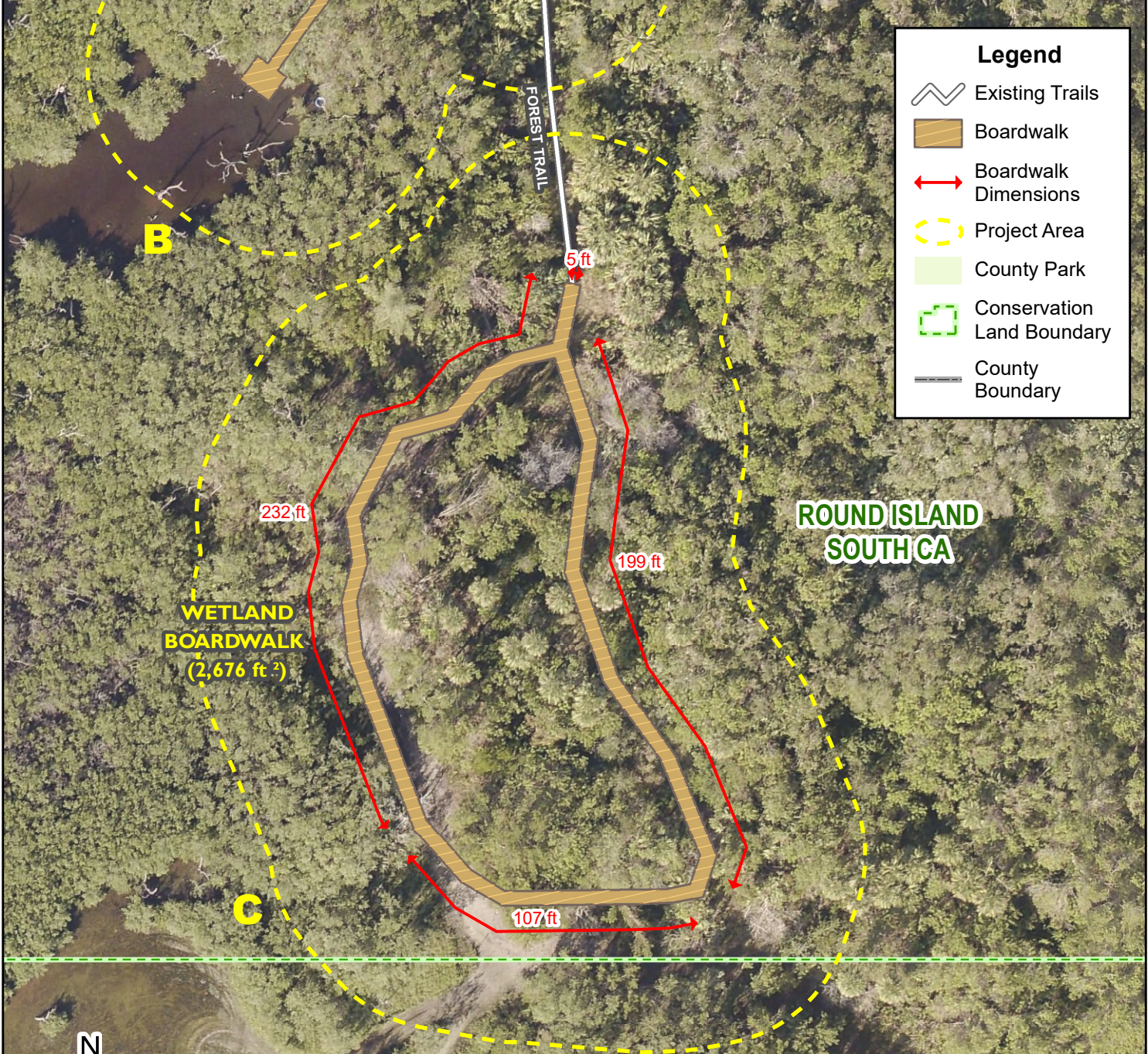
**NOTE:** Elevated foot paths will be constructed at least 2' above the Mean High Water Elevation. The wetland overlook will be constructed per applicable criteria within Chapter 40C-400.488, F.A.C. The platform area will be at least 5' above the Mean High Water elevation, will include standard hand rails, and signage denoting that no boat mooring is permitted.

Data Sources: IRCGIS, IRC Parks, 2017; Elevation Data: 2007 FDEM LIDAR  
Aerial Imagery: Pictometry, December 2016





# Figure 2C: Wetland Boardwalk Plan Round Island South Conservation Area



**Legend**

- Existing Trails
- Boardwalk
- Boardwalk Dimensions
- Project Area
- County Park
- Conservation Land Boundary
- County Boundary



**NOTE:** Elevated foot paths will be constructed at least 2' above the Mean High Water Elevation. The wetland overlook will be constructed per applicable criteria within 40C-400.488, F.A.C. The platform area will be at least 5' above the Mean High Water elevation, will include standard hand rails, and signage denoting that no boat mooring is permitted.

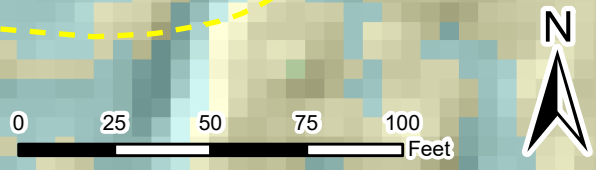
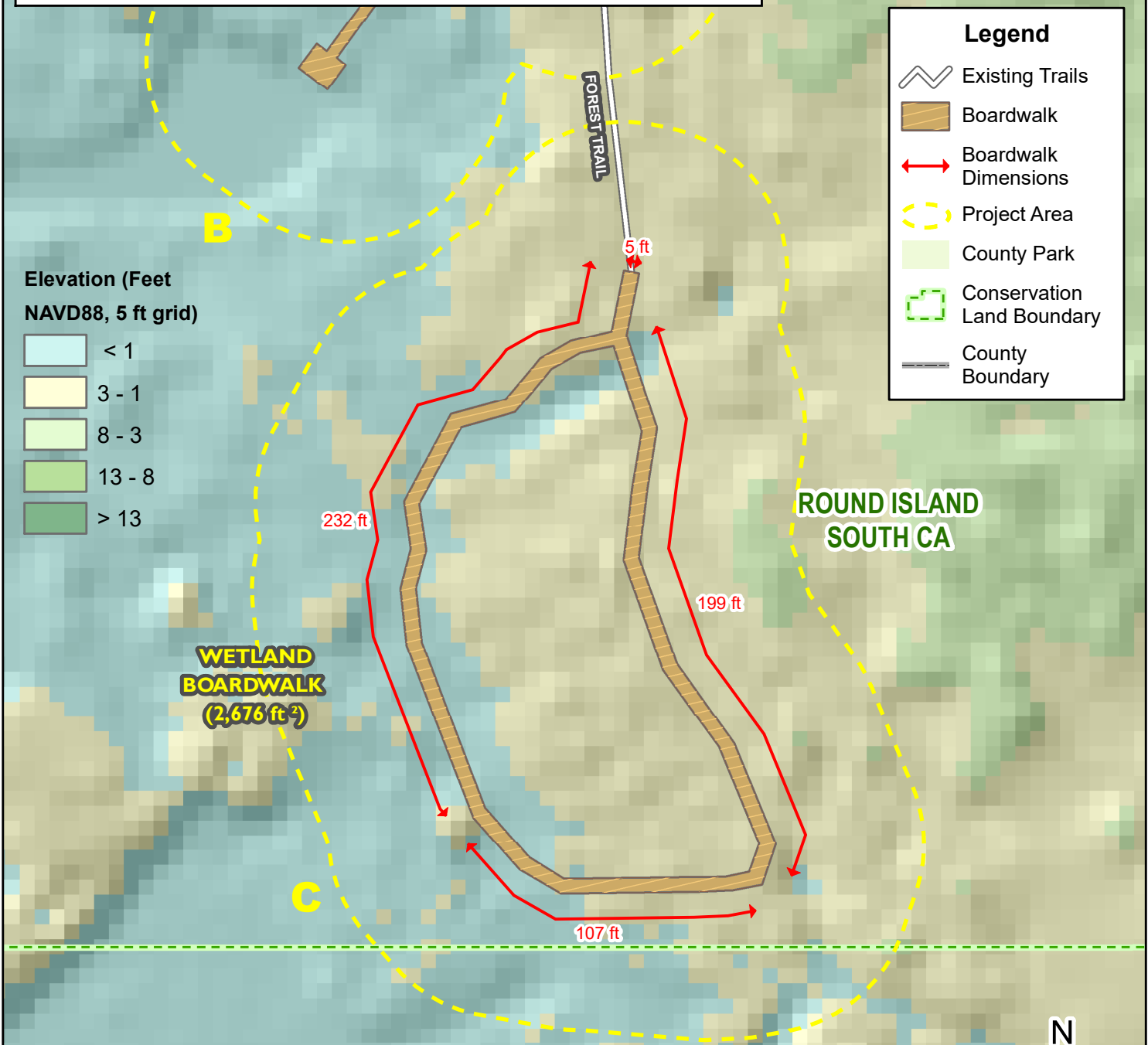
**IMPORTANT NOTE:** This map illustrates a depiction of the planned boardwalk in this general location for permitting purposes. The actual location and placement of the structure will be surveyed prior to final design to establish a 10 foot buffer between County property and off-site lands. Boundary lines shown in this map are not a Survey.

Data Sources: IRGIS; IRC Parks; Aerial Imagery; Pictometry, Dec 2016





# Figure 2C: Wetland Boardwalk Plan Round Island South Conservation Area



**NOTE:** Elevated foot paths will be constructed at least 2' above the Mean High Water Elevation. The wetland overlook will be constructed per applicable criteria within 40C-400.488, F.A.C. The platform area will be at least 5' above the Mean High Water elevation, will include standard hand rails, and signage denoting that no boat mooring is permitted.

**IMPORTANT NOTE:** This map illustrates a depiction of the planned boardwalk in this general location for permitting purposes. The actual location and placement of the structure will be surveyed prior to final design to establish a 10 foot buffer between County property and off-site lands. Boundary lines shown in this map are not a Survey.

Data Sources: IRGIS, IRC Parks, 2017; Elevation Data: 2007 FDEM LIDAR Aerial Imagery: Pictometry, December 2016