

# ALMAND

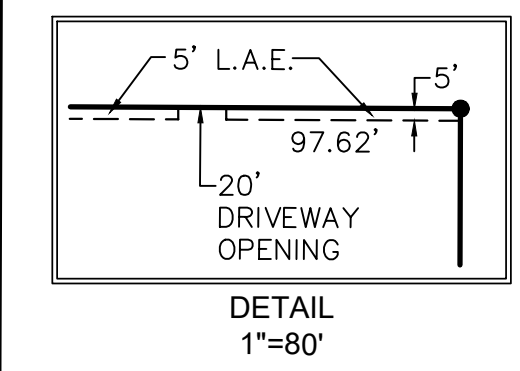
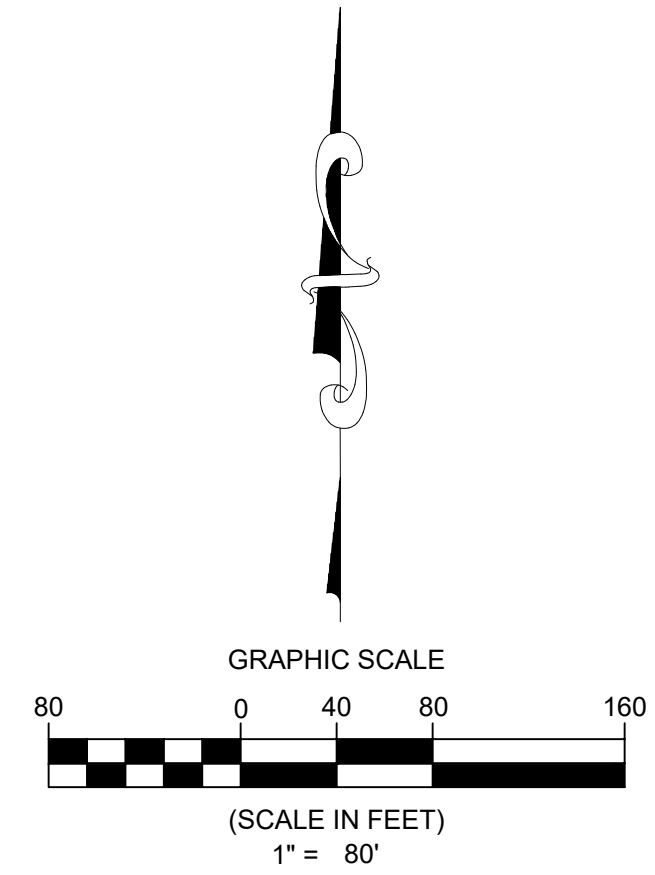
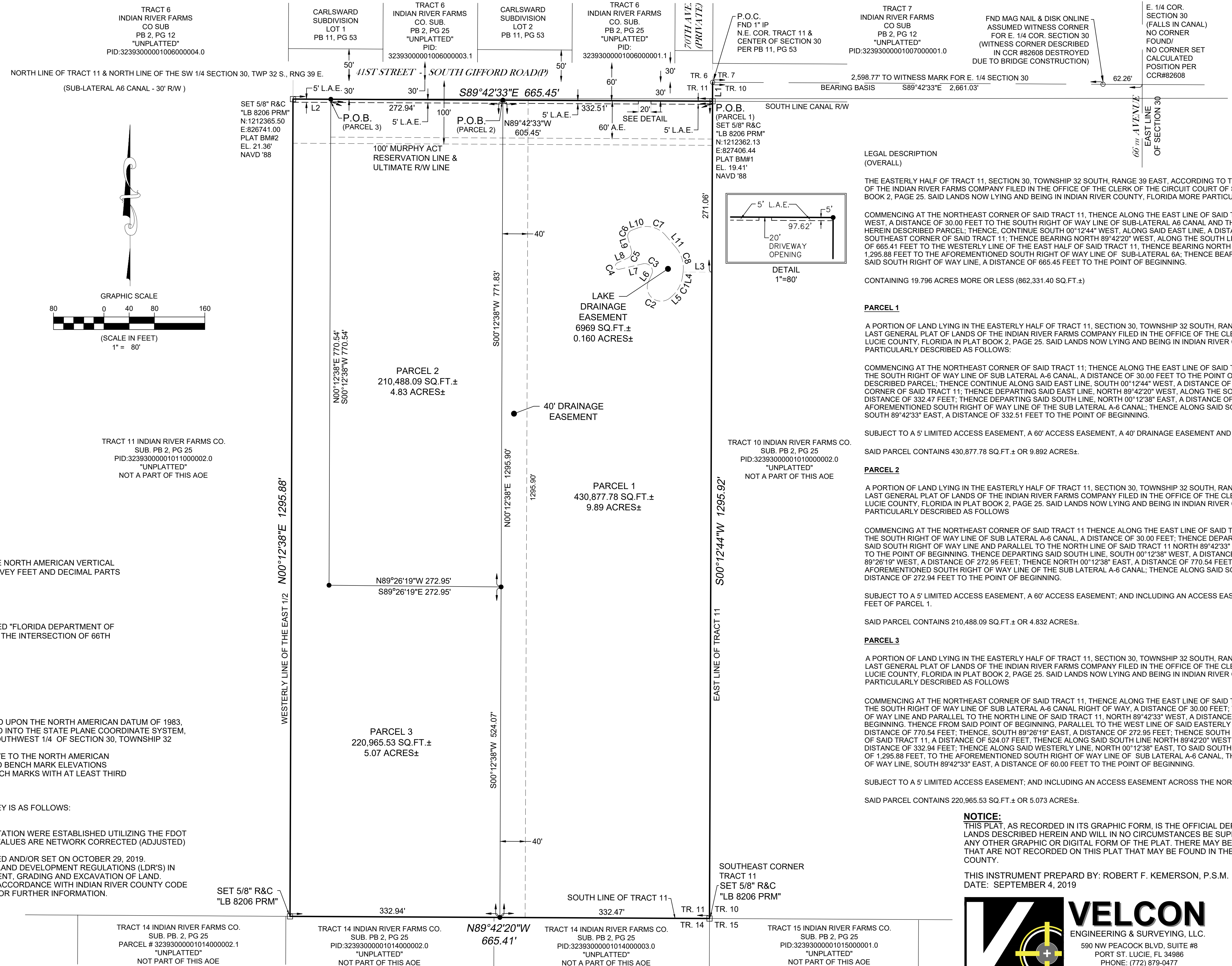
## AFFIDAVIT OF EXEMPTION

A DIVISION OF LAND UNDER THE AFFIDAVIT OF EXEMPTION PROCESS BEING THE EASTERLY ONE-HALF OF TRACT 11, LYING IN SECTION 30, TOWNSHIP 32 SOUTH, RANGE 39 EAST, ACCORDING TO THE LAST GENERAL PLAT OF LANDS OF THE INDIAN RIVER FARMS COMPANY, RECORDED IN PLAT BOOK 2, PAGE 25, PUBLIC RECORDS OF ST. LUCIE COUNTY, FLORIDA. SAID LANDS NOW LYING AND BEING IN INDIAN RIVER COUNTY, FLORIDA.

PLAT BOOK: \_\_\_\_\_

PAGE: \_\_\_\_\_

CFN: \_\_\_\_\_  
CLERK'S FILE NUMBER



THE ELEVATIONS SHOWN HEREON ARE REFERENCED TO THE NORTH AMERICAN VERTICAL DATUM OF 1988 (NAVD 1988) AND ARE DISPLAYED IN U.S. SURVEY FEET AND DECIMAL PARTS

FOUND 3" DIAMETER ALUMINUM DISK STAMPED "FLORIDA DEPARTMENT OF ENVIRONMENTAL PROTECTION SURVEY MARK U 647 2006" AT THE INTERSECTION OF 66TH

COORDINATE VALUES AND BEARING DATUM ARE BASED UPON THE NORTH AMERICAN DATUM OF 1983, ADJUSTMENT OF 2011 (NAD83/11), AND ARE PROJECTED INTO THE STATE PLANE COORDINATE SYSTEM, FLORIDA EAST ZONE, 0901. THE NORTH LINE OF THE SOUTHWEST 1/4 OF SECTION 30, TOWNSHIP 32

ALL ELEVATIONS HEREON ARE BASED ON AND RELATIVE TO THE NORTH AMERICAN VERTICAL DATUM OF 1988 (NAVD '88). ALL ESTABLISHED BENCH MARK ELEVATIONS ARE BASED ON CLOSED LEVEL LOOPS, RUN FROM BENCH MARKS WITH AT LEAST THIRD

THE HORIZONTAL TARGET ACCURACY FOR THIS SURVEY IS AS FOLLOWS:

HORIZONTAL POSITIONS OF SITE CONTROL MONUMENTATION WERE ESTABLISHED UTILIZING THE FDOT FPRN NETWORK CORRECTION. LOCAL SITE CONTROL VALUES ARE NETWORK CORRECTED (ADJUSTED)

PERMANENT REFERENCE MONUMENTS WERE CERTIFIED AND/OR SET ON OCTOBER 29, 2019. PROPERTIES ARE SUBJECT TO INDIAN RIVER COUNTY LAND DEVELOPMENT REGULATIONS (LDR'S) IN CHAPTERS 930 AND 934 FOR STORMWATER MANAGEMENT, GRADING AND EXCAVATION OF LAND. PROPOSED ACTIVITY MAY OR MAY NOT BE EXEMPT IN ACCORDANCE WITH INDIAN RIVER COUNTY CODE SECTIONS 394.04 AND 930.06. CONTACT THE COUNTY FOR FURTHER INFORMATION.

**NOTICE:**  
THIS PLAT, AS RECORDED IN ITS GRAPHIC FORM, IS THE OFFICIAL DEPICTION OF THE SUBDIVIDED LANDS DESCRIBED HEREIN AND WILL IN NO CIRCUMSTANCES BE SUPPLANTED IN AUTHORITY BY ANY OTHER GRAPHIC OR DIGITAL FORM OF THE PLAT. THERE MAY BE ADDITIONAL RESTRICTIONS THAT ARE NOT RECORDED ON THIS PLAT THAT MAY BE FOUND IN THE PUBLIC RECORDS OF THIS COUNTY.

THIS INSTRUMENT PREPARED BY: ROBERT F. KEMERSON, P.S.M.  
DATE: SEPTEMBER 4, 2019



**VELCON**  
ENGINEERING & SURVEYING, LLC.  
590 NW PEACOCK BLVD, SUITE #8  
FORT ST. LUCIE, FL 34986  
PHONE: (772) 879-0477  
LICENSED BUSINESS NO. 8206