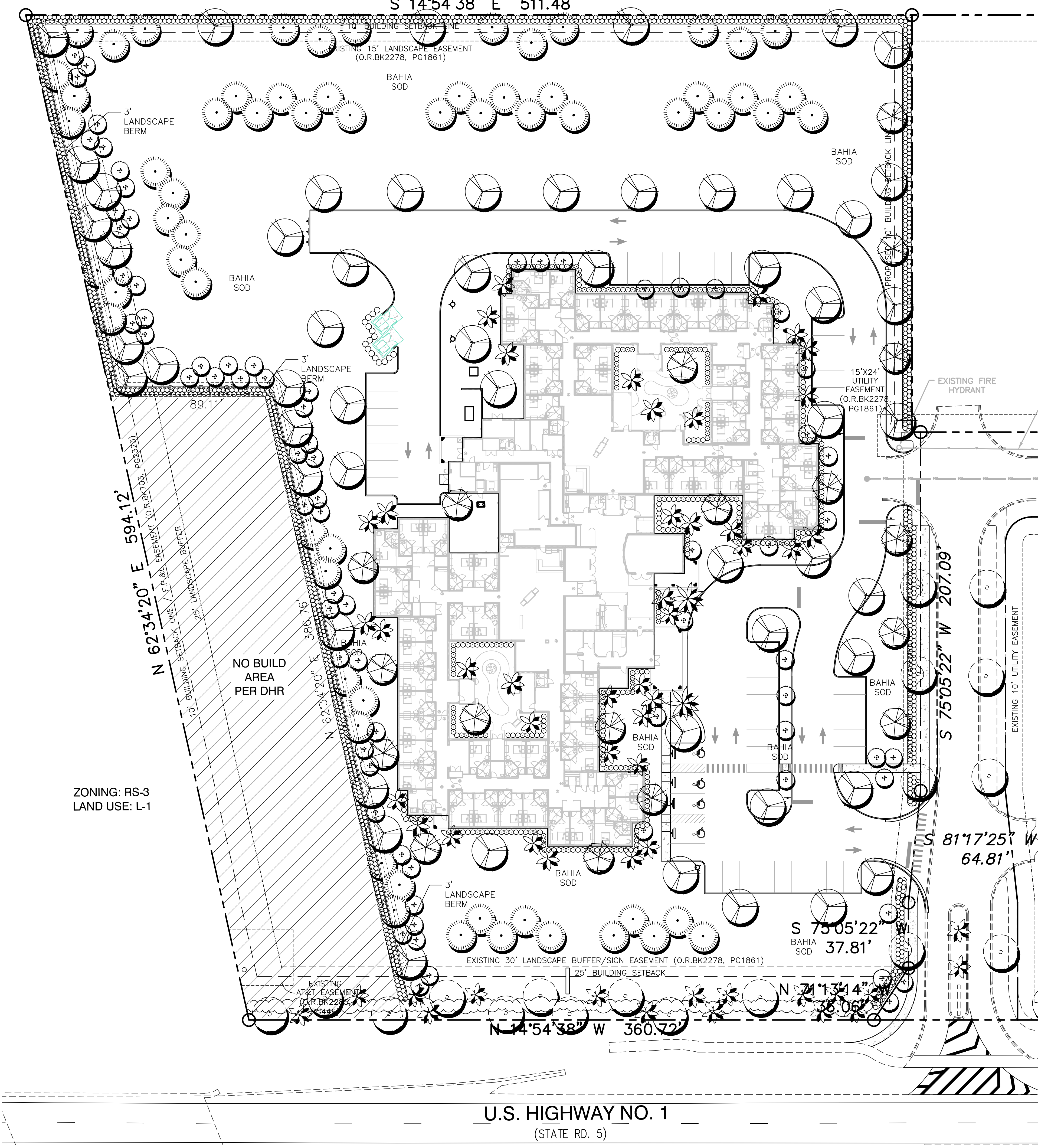
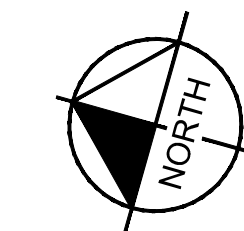


LAND USE: M-1

S 14°54'38" E 511.48'



ZONING: RS-3
LAND USE: L-1

U.S. HIGHWAY NO. 1
(STATE RD. 5)

SCALE AS NOTED	DESIGNED BY GR	DRAWN BY BW	CHECKED BY GR
CONCEPTUAL LANDSCAPE PLAN			
AUTUMN OF VERO BEACH 5380 US HIGHWAY ONE		FLORIDA	
INDIAN RIVER COUNTY		DATE	
DATE		REVISIONS	
PROJECT NO.		BY	
SHEET NUMBER		DATE	
4			

ALOHA PACIFICA LLC
LANDSCAPE ARCHITECTURE + PLANNING
300 S. ROSENBERG STREET, SUITE 240, DELAND, FLORIDA 32701
(352) 326-6666
www.alohapacificallc.com

