

# SUMMER LAKE NORTH SUBDIVISION

BEING A PORTION OF SECTION 32, TOWNSHIP 31 SOUTH, RANGE 39 EAST.

VERO BEACH, INDIAN RIVER COUNTY, FLORIDA

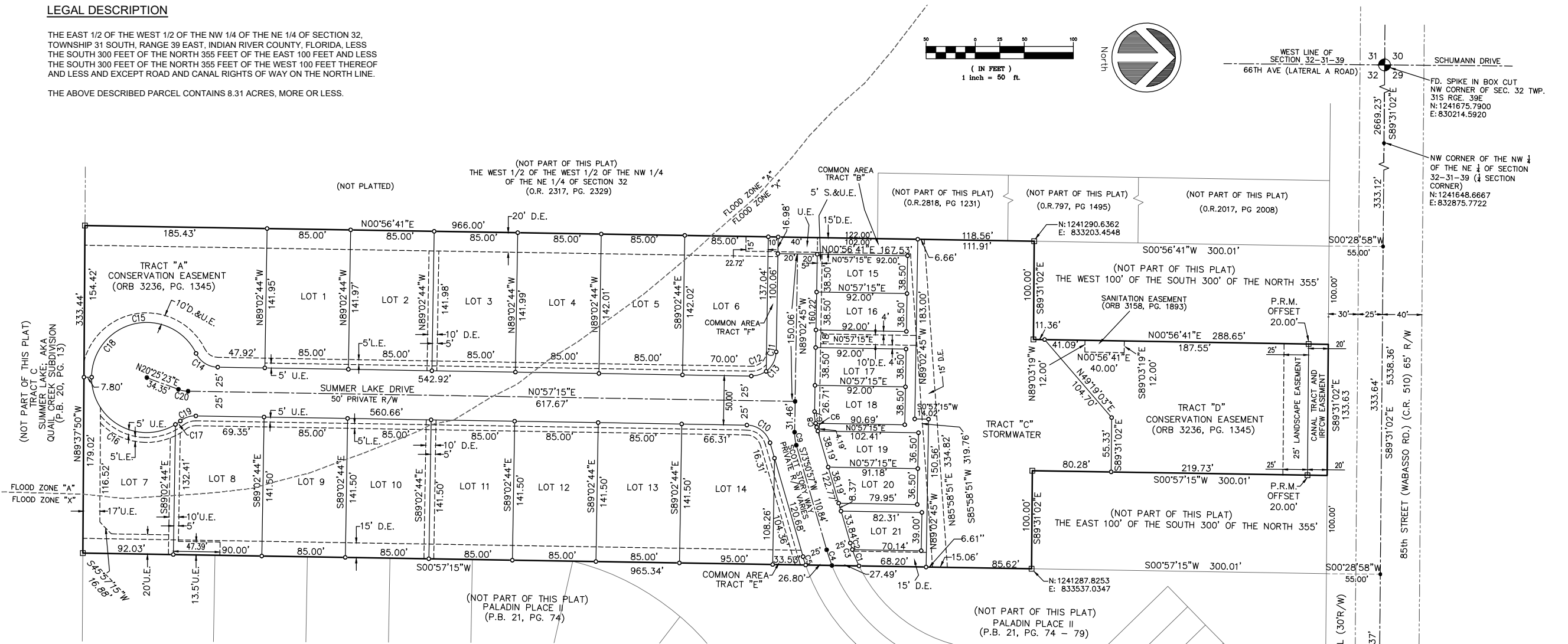
COVENANTS, RESTRICTIONS OR RESERVATIONS AFFECTING THE OWNERSHIP OR USE OF THE PROPERTY SHOWN IN THIS PLAT ARE FILED IN OFFICIAL RECORD BOOK 3127, PAGE 361, A SUPPLEMENT TO THE DECLARATION FILED IN OFFICIAL RECORD BOOK 3131, PAGE 1810, AND AN AMENDMENT TO THE DECLARATION FILED IN OFFICIAL RECORD BOOK 3141, PAGE 717, ALL OF THE PUBLIC RECORDS OF INDIAN RIVER COUNTY, FLORIDA.

PLAT BOOK \_\_\_\_\_  
PAGE \_\_\_\_\_  
CFN \_\_\_\_\_  
CLERK'S FILE NO. \_\_\_\_\_

## LEGAL DESCRIPTION

THE EAST 1/2 OF THE WEST 1/2 OF THE NW 1/4 OF THE NE 1/4 OF SECTION 32, TOWNSHIP 31 SOUTH, RANGE 39 EAST, INDIAN RIVER COUNTY, FLORIDA, LESS THE SOUTH 300 FEET OF THE NORTH 355 FEET OF THE EAST 100 FEET AND LESS THE SOUTH 300 FEET OF THE NORTH 355 FEET OF THE WEST 100 FEET THEREOF AND LESS AND EXCEPT ROAD AND CANAL RIGHTS OF WAY ON THE LINE.

THE ABOVE DESCRIBED PARCEL CONTAINS 8.31 ACRES, MORE OR LESS.



## FLOOD HAZARD WARNING

THIS PROPERTY MAY BE SUBJECT TO FLOODING DURING A ONE-HUNDRED YEAR BASE FLOOD EVENT. YOU SHOULD CONTACT LOCAL BUILDING AND ZONING OFFICIALS AND OBTAIN THE LATEST INFORMATION REGARDING FLOOD ELEVATIONS AND RESTRICTIONS ON DEVELOPMENT BEFORE MAKING PLANS FOR THE USE OF THIS PROPERTY.

CURVE	LENGTH	RADIUS	DELTA	CH. BEARING	CH. LENGTH
C1	18.03'	150.00'	6°53'16"	N67°43'25"E	18.02'
C2	7.02'	150.00'	2°40'54"	N72°30'29"E	7.02'
C3	25.05'	150.00'	9°34'10"	N69°03'52"E	25.02'
C4	16.88'	175.00'	5°31'32"	N71°05'11"E	16.87'
C5	8.97'	200.00'	2°34'13"	N72°33'50"E	8.97'
C6	4.14'	53.67'	4°25'10"	N76°03'32"E	4.14'
C7	11.88'	53.67'	12°41'08"	N84°36'41"E	11.86'
C8	16.02'	53.67'	17°06'19"	N82°24'06"E	15.96'
C9	13.43'	45.00'	17°06'19"	N82°24'06"E	13.38'
C10	31.81'	25.00'	72°53'41"	S37°24'06"W	29.70'

CURVE	LENGTH	RADIUS	DELTA	CH. BEARING	CH. LENGTH
C11	23.18'	25.00'	53°07'47"	N62°28'50"W	22.36'
C12	16.09'	25.00'	36°52'12"	N17°28'51"W	15.81'
C13	39.27'	25.00'	90°00'00"	N44°02'45"W	35.36'
C14	27.47'	25.00'	62°57'03"	N32°25'48"E	26.11'
C15	150.06'	56.00'	153°32'09"	S12°51'46"E	109.03'
C16	119.12'	56.00'	121°52'33"	N29°25'53"E	97.90'
C17	6.15'	56.00'	6°17'44"	N34°39'16"W	6.15'
C18	275.34'	56.00'	281°42'26"	S76°56'54"E	70.71'
C19	16.91'	25.00'	38°45'23"	S18°25'26"E	16.59'
C20	10.19'	30.00'	19°28'08"	N10°41'19"E	10.14'

## ABBREVIATIONS

L.M.E. = LAKE MAINTENANCE EASEMENT  
C.M. = CONCRETE MONUMENT  
C.C.R. = CERTIFIED CORNER RECORD  
R = RADIUS  
RP = RADIUS POINT  
Δ = CENTRAL ANGLE  
L = ARC LENGTH  
CH. = CHORD  
PB. = PLAT BOOK  
O.R. = OFFICIAL RECORD BOOK  
PG. = PAGE  
P.L.S. = PROFESSIONAL LAND SURVEYOR  
(R) = RADIAL  
(TYP.) = TYPICAL  
L.B. = LAND SURVEYING BUSINESS  
IRC = IRON ROD WITH CAP  
D.&U.E. = DRAINAGE & UTILITY EASEMENT  
S.&U.E. = SIDEWALK & UTILITY EASEMENT  
D.&A.E. = DRAINAGE & ACCESS EASEMENT  
IRFWCD = INDIAN RIVER FARMS WATER CONTROL DISTRICT

POB = POINT OF BEGINNING  
POC = POINT OF COMMENCEMENT  
PCP = PERMANENT CONTROL POINT  
PRM = PERMANENT REFERENCE MONUMENT  
FD. = FOUND  
EASE. = EASEMENT  
R/W = RIGHT OF WAY  
N.G.V.D. = NATIONAL GEODETIC VERTICAL DATUM  
OA = OVERALL  
NAVD = NORTH AMERICAN VERTICAL DATUM  
U.E. = UTILITY EASEMENT  
D.E. = DRAINAGE EASEMENT  
L.E. = LANDSCAPE EASEMENT  
L.A.E. = LIMITED ACCESS EASEMENT

## SYMBOL LEGEND

■ SET 4"x4" CONCRETE PERMANENT REFERENCE MONUMENT (PRM) LB#6905 FOUND MONUMENTS WILL BE NOTED AS FOUND  
○ LOT CORNER MARKER SET 5/8" IRC, LB#6905  
● PERMANENT CONTROL POINT TO BE SET (PCP) LB#6905

FD BOAT SPIKE IN CUTOUT, NO IDENTIFICATION  
NE CORNER OF SEC. 32, TWP. 31S, RGE. 39E  
N: 1241625.9759  
E: 835544.6096

PREPARED BY: MATTHEW CROWLEY, PSM#7214  
MERIDIAN LAND SURVEYORS LB6905  
DATE OF PREPARATION: OCTOBER 9, 2019

HOUSTON, SCHULKE, BITTLE, & STODDARD, INC. D/B/A  
**MERIDIAN**  
LAND SURVEYORS  
1717 INDIAN RIVER BLVD, SUITE 201  
VERO BEACH, FL 32960 LB#6905  
PHONE: 772-794-1213, FAX: 772-794-1096  
EMAIL: LB6905@BELLSOUTH.NET

SHEET  
**3 of 3**