

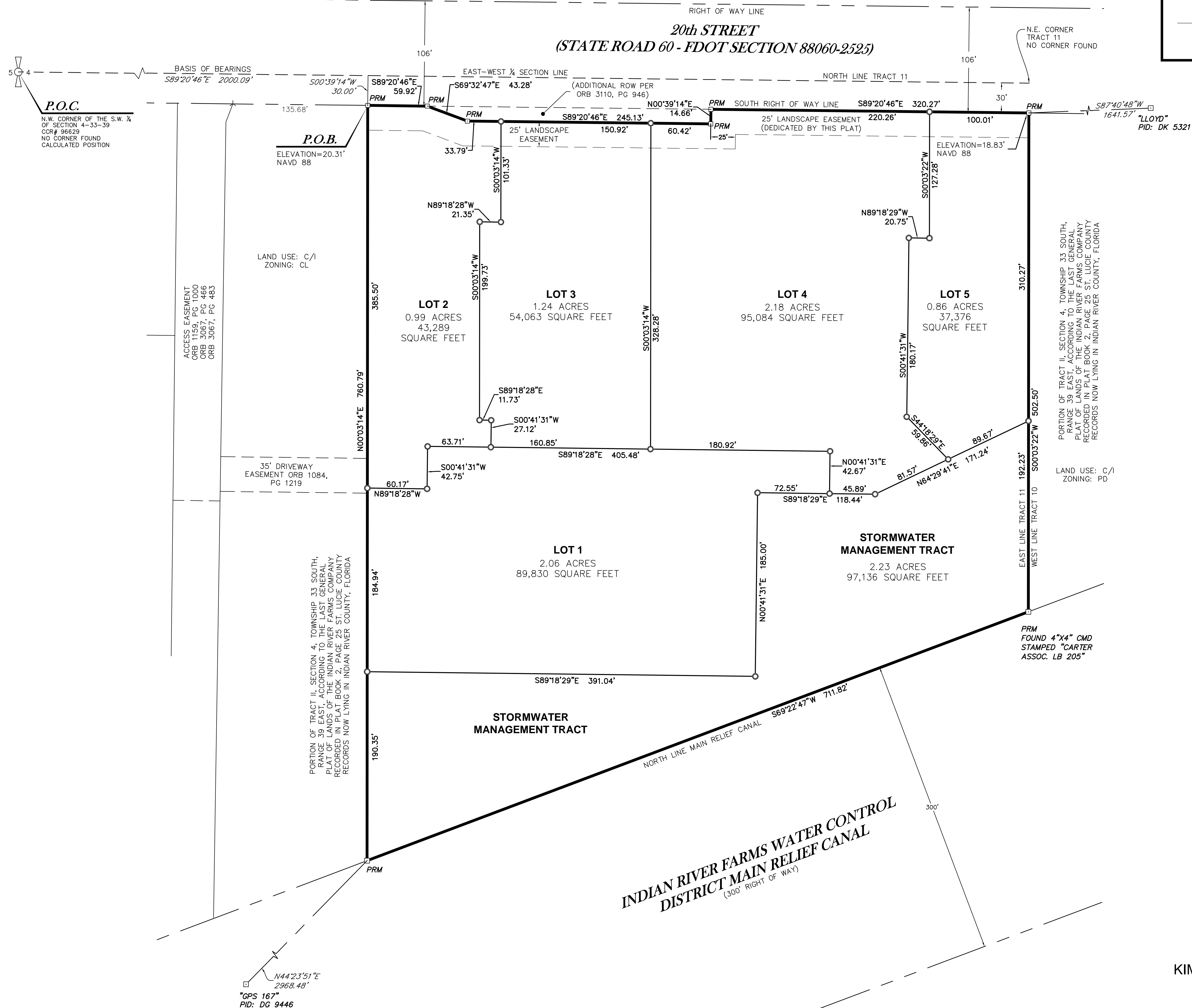
VERO BEACH SQUARE PD

BEING A REPLAT OF A PORTION OF TRACT 11, SECTION 4, TOWNSHIP 33 SOUTH, RANGE 39 EAST, LAST GENERAL PLAT OF LANDS OF THE INDIAN RIVER FARMS COMPANY, ACCORDING TO THE PLAT THEREOF AS RECORDED IN PLAT BOOK 2, PAGE 25, PUBLIC RECORDS OF ST. LUCIE COUNTY, FLORIDA. SAID LANDS NOW LYING IN INDIAN RIVER COUNTY, FLORIDA.

PLAT BOOK _____

PAGE _____

CLERK'S FILE NUMBER (CFN) _____



LEGEND OF SYMBOLS

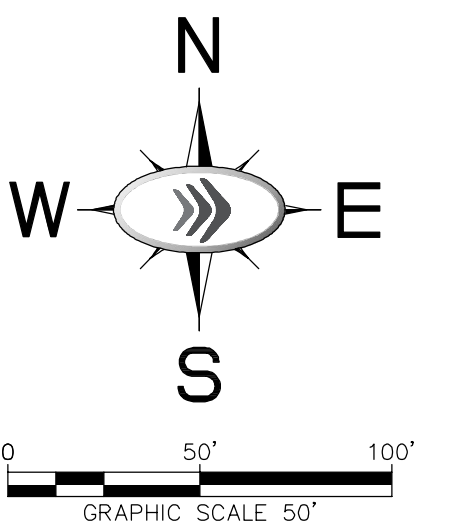
- = PRM 4"x4" CONCRETE MONUMENT WITH DISC STAMPED "KHA LB 696 PRM" OR 5/8" IRON ROD WITH ALUMINIUM ALLOY CAP STAMPED "KHA LB 696 PRM". AS NOTED
- = 5/8" IRON ROD AND CAP STAMPED "KHA LB 696"

ABBREVIATIONS

CMD	CONCRETE MONUMENT & DISK
E	EAST
FPL	FLORIDA POWER & LIGHT COMPANY
IR	IRON ROD
IRC	IRON ROD AND CAP (AS NOTED)
L	LENGTH
LB	LICENSED BUSINESS
N	NORTH
ORB	OFFICIAL RECORD BOOK
PB	PLAT BOOK
PG	PAGE
PK	PARKER KALON
PLS	PROFESSIONAL LAND SURVEYOR
P.O.B.	POINT OF BEGINNING
P.O.C.	POINT OF COMMENCEMENT
PRM	PERMANENT REFERENCE MONUMENT AS NOTED
PSM	PROFESSIONAL SURVEYOR AND MAPPER
ROW	RIGHT-OF-WAY
S	SOUTH
SEC	SECTION
SQ FT	SQUARE FEET
W	WEST
NAVD 88	NORTH AMERICAN VERTICAL DATUM OF 1988

NOTE

SEE SHEETS 4, 5 & 6 OF 6 FOR EXISTING EASEMENTS



THIS INSTRUMENT WAS PREPARED BY:
KIMLEY-HORN AND ASSOCIATES, INC
 E.C. DEMETER P.S.M. 5179, STATE OF FLORIDA
 445 24TH STREET, SUITE 200
 VERO BEACH, FLORIDA 32960
 LB 696
 ON MAY 31, 2018

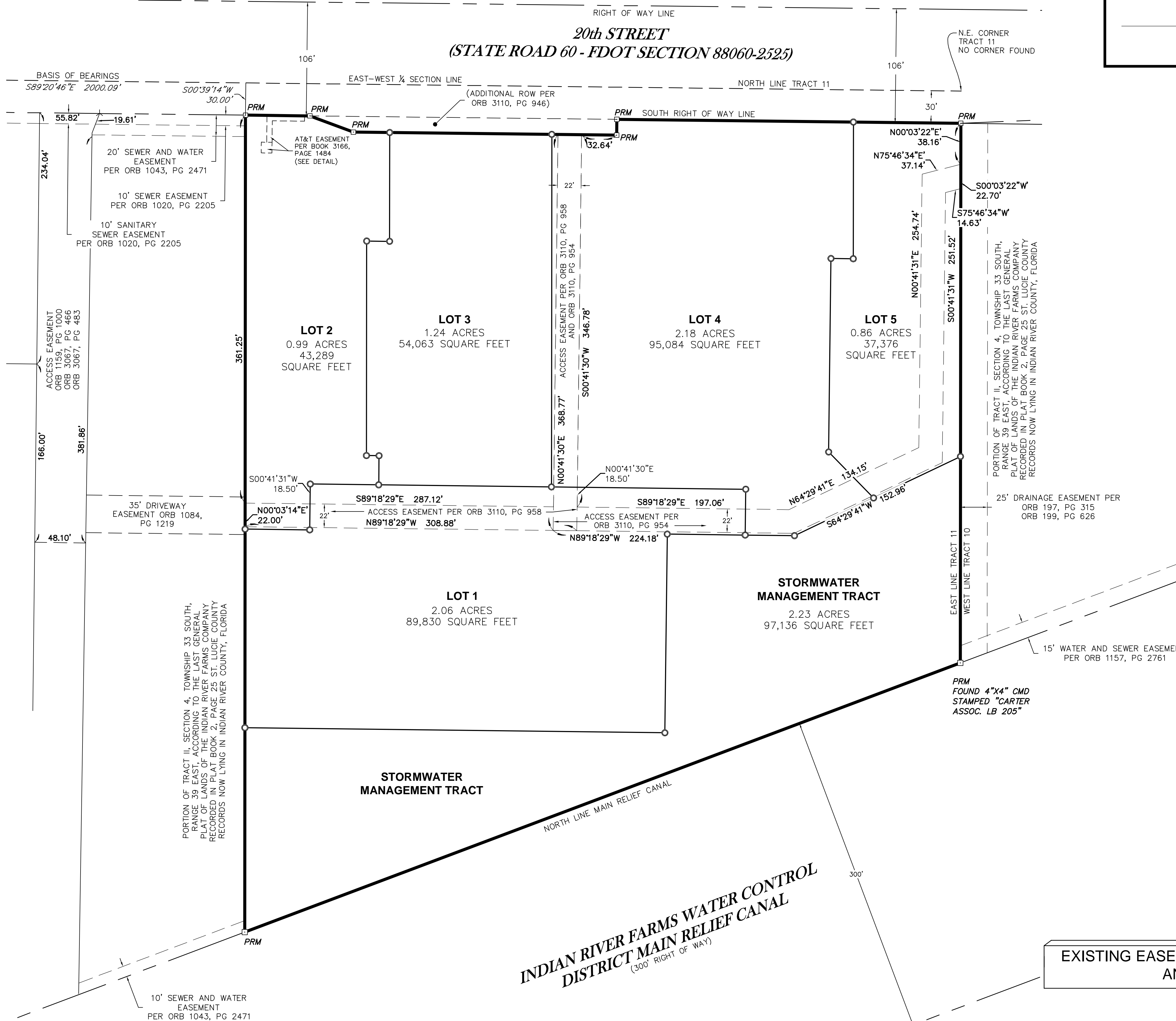
VERO BEACH SQUARE PD

BEING A REPLAT OF A PORTION OF TRACT 11, SECTION 4, TOWNSHIP 33 SOUTH, RANGE 39 EAST, LAST GENERAL PLAT OF LANDS OF THE INDIAN RIVER FARMS COMPANY, ACCORDING TO THE PLAT THEREOF AS RECORDED IN PLAT BOOK 2, PAGE 25, PUBLIC RECORDS OF ST. LUCIE COUNTY, FLORIDA. SAID LANDS NOW LYING IN INDIAN RIVER COUNTY, FLORIDA.

PLAT BOOK _____

PAGE _____

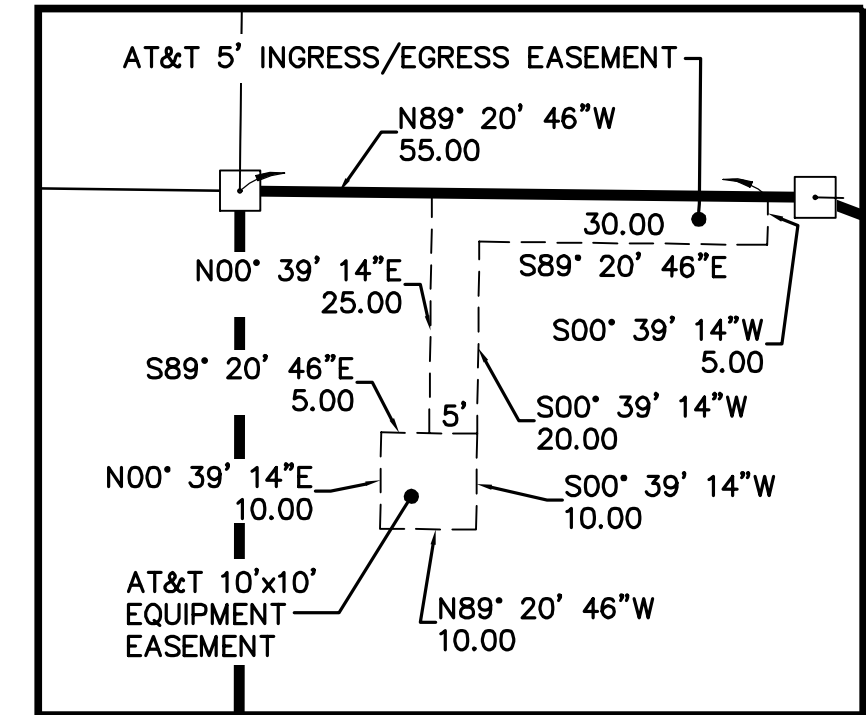
CLERK'S FILE NUMBER (CFN) _____



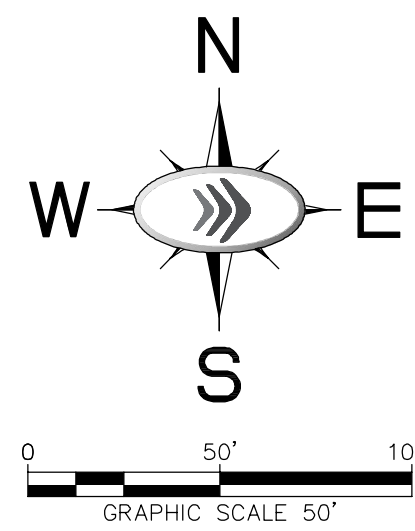
- ### LEGEND OF SYMBOLS
- ◻ = PRM 4"x4" CONCRETE MONUMENT WITH DISC STAMPED "KHA LB 696 696 PRM" OR 5/8" IRON ROD WITH ALUMINIUM ALLOY CAP STAMPED "KHA LB 696 PRM". AS NOTED
 - = 5/8" IRON ROD AND CAP STAMPED "KHA LB 696"

ABBREVIATIONS

CMD	CONCRETE MONUMENT & DISK
E	EAST
FPL	FLORIDA POWER & LIGHT COMPANY
IR	IRON ROD
IRC	IRON ROD AND CAP (AS NOTED)
L	LENGTH
LB	LICENSED BUSINESS
N	NORTH
ORB	OFFICIAL RECORD BOOK
PB	PLAT BOOK
PG	PAGE
PK	PARKER KALON
PLS	PROFESSIONAL LAND SURVEYOR
P.O.B.	POINT OF BEGINNING
P.O.C.	POINT OF COMMENCEMENT
PRM	PERMANENT REFERENCE MONUMENT AS NOTED
PSM	PROFESSIONAL SURVEYOR AND MAPPER
ROW	RIGHT-OF-WAY
S	SOUTH
SEC	SECTION
SQ FT	SQUARE FEET
W	WEST
NAVD 88	NORTH AMERICAN VERTICAL DATUM OF 1988



AT&T EASEMENT DETAIL
ORB 3166, PG 1484
1"=20'



EXISTING EASEMENTS SHEET FOR AT&T EASEMENT AND ACCESS EASEMENT

THIS INSTRUMENT WAS PREPARED BY:
KIMLEY-HORN AND ASSOCIATES, INC
E.C. DEMETER P.S.M. 5179, STATE OF FLORIDA
445 24TH STREET, SUITE 200
VERO BEACH, FLORIDA 32960
LB 696

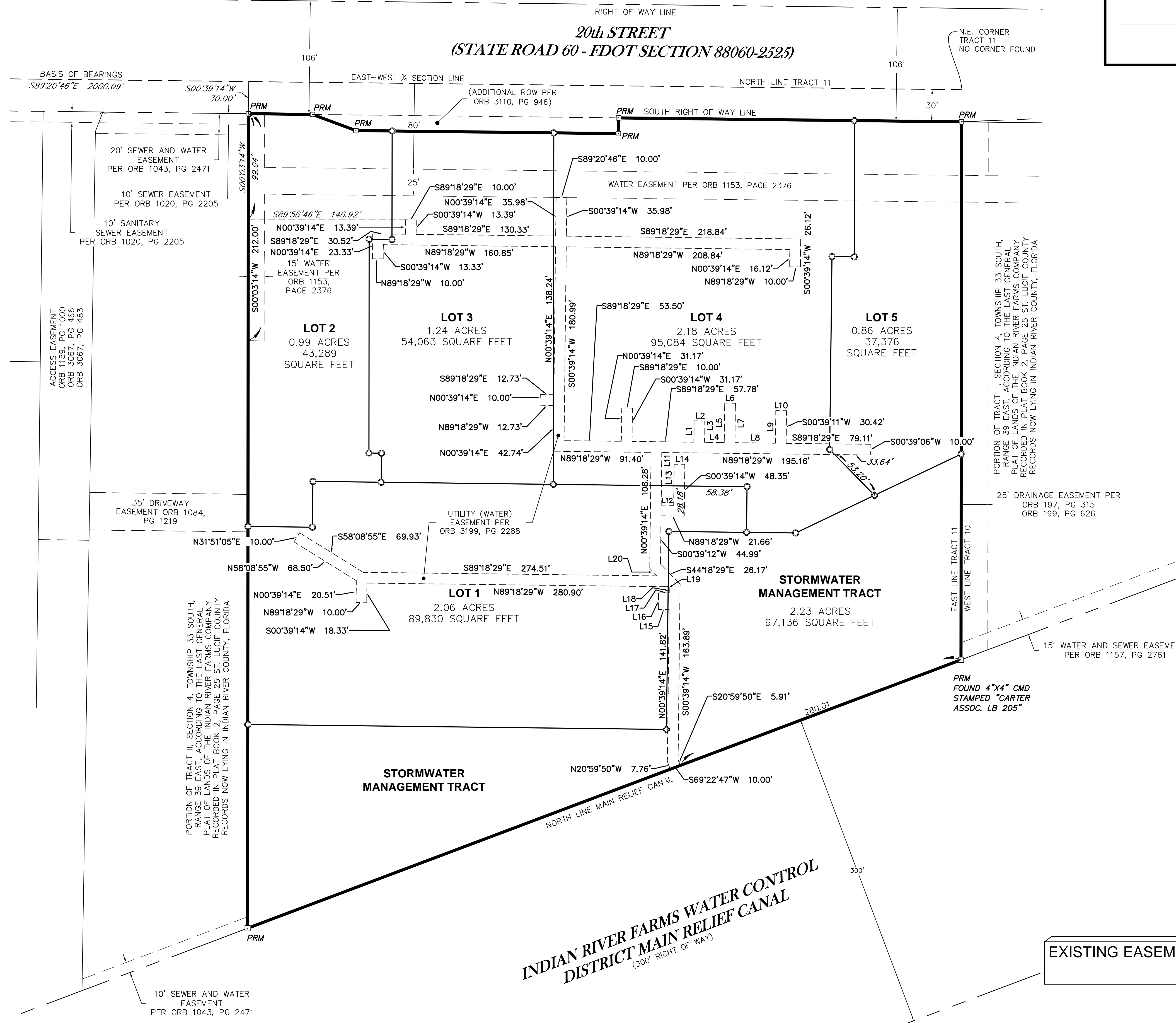
VERO BEACH SQUARE PD

BEING A REPLAT OF A PORTION OF TRACT 11, SECTION 4, TOWNSHIP 33 SOUTH, RANGE 39 EAST, LAST GENERAL PLAT OF LANDS OF THE INDIAN RIVER FARMS COMPANY, ACCORDING TO THE PLAT THEREOF AS RECORDED IN PLAT BOOK 2, PAGE 25, PUBLIC RECORDS OF ST. LUCIE COUNTY, FLORIDA. SAID LANDS NOW LYING IN INDIAN RIVER COUNTY, FLORIDA.

PLAT BOOK _____

PAGE _____

CLERK'S FILE NUMBER (CFN) _____



LEGEND OF SYMBOLS

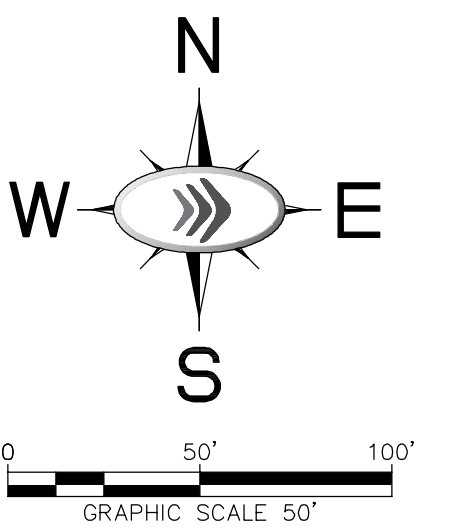
- ◻ = PRM 4"x4" CONCRETE MONUMENT WITH DISC STAMPED "KHA LB 696 PRM" OR 5/8" IRON ROD WITH ALUMINIUM ALLOY CAP STAMPED "KHA LB 696 PRM". AS NOTED
- = 5/8" IRON ROD AND CAP STAMPED "KHA LB 696"

ABBREVIATIONS

CMD	CONCRETE MONUMENT & DISK
E	EAST
FPL	FLORIDA POWER & LIGHT COMPANY
IR	IRON ROD
IRC	IRON ROD AND CAP (AS NOTED)
L	LENGTH
LB	LICENSED BUSINESS
N	NORTH
ORB	OFFICIAL RECORD BOOK
PB	PLAT BOOK
PG	PAGE
PK	PARKER KALON
PLS	PROFESSIONAL LAND SURVEYOR
P.O.B.	POINT OF BEGINNING
P.O.C.	POINT OF COMMENCEMENT
PRM	PERMANENT REFERENCE MONUMENT AS NOTED
PSM	PROFESSIONAL SURVEYOR AND MAPPER
ROW	RIGHT-OF-WAY
S	SOUTH
SEC	SECTION
SQ FT	SQUARE FEET
W	WEST
NAVD 88	NORTH AMERICAN VERTICAL DATUM OF 1988

LINE TABLE			LINE TABLE		
LINE #	BEARING	DISTANCE	LINE #	BEARING	DISTANCE
L1	N00° 39' 14" W	19.89'	L11	S00° 39' 14" W	49.14'
L2	S89° 18' 29" E	10.00'	L12	S89° 18' 29" E	11.66'
L3	S00° 39' 14" W	19.89'	L13	N00° 39' 14" E	38.35'
L4	S89° 18' 29" E	18.36'	L14	S89° 18' 29" E	10.00'
L5	N00° 39' 14" E	36.88'	L15	N89° 18' 29" W	10.00'
L6	S89° 18' 29" E	10.00'	L16	N00° 39' 14" E	15.54'
L7	S00° 39' 14" W	36.88'	L17	S89° 18' 29" E	10.00'
L8	S89° 18' 29" E	37.81'	L18	N00° 39' 14" E	4.30'
L9	N00° 39' 14" E	30.42'	L19	N44° 18' 29" W	2.13'
L10	S89° 18' 29" E	10.00'	L20	N44° 18' 29" W	9.90'

WATER EASEMENT LINE TABLE



EXISTING EASEMENTS SHEET FOR WATER EASEMENTS

THIS INSTRUMENT WAS PREPARED BY:
KIMLEY-HORN AND ASSOCIATES, INC
 E.C. DEMETER P.S.M. 5179, STATE OF FLORIDA
 445 24TH STREET, SUITE 200
 VERO BEACH, FLORIDA 32960
 LB 696

