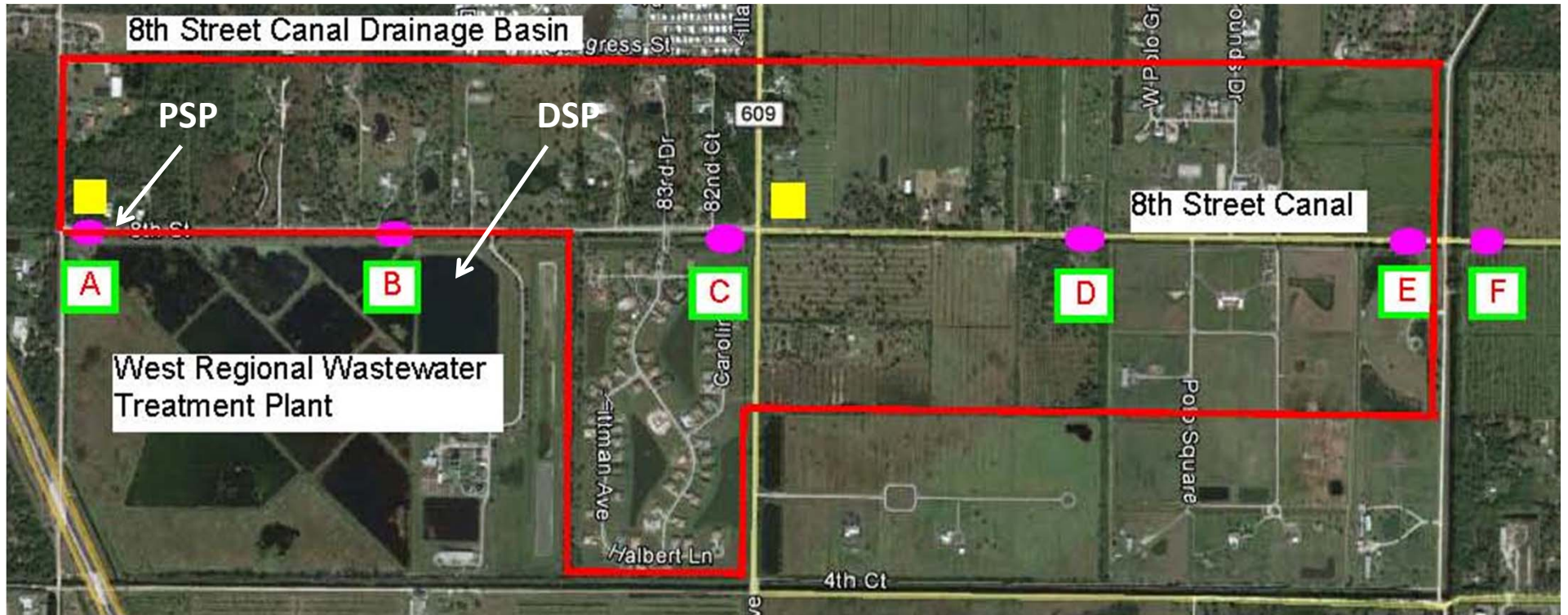


EXHIBIT 2

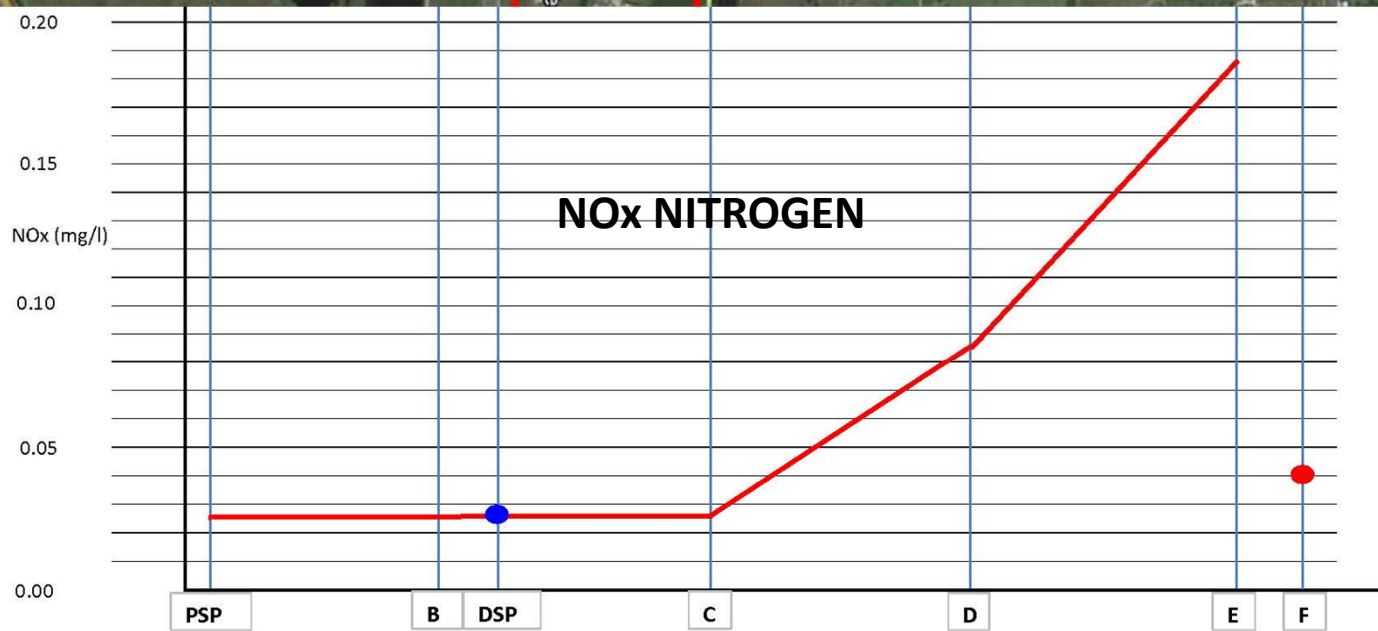
**Results of Phase 1 Water Quality
Study of Nutrients in the Indian
River Farms Water Control
District's 8th Street Canal**

IRC PUBLIC WORKS STORMWATER
DIVISION AND IRC DIVISION OF
UTILITY SERVICES

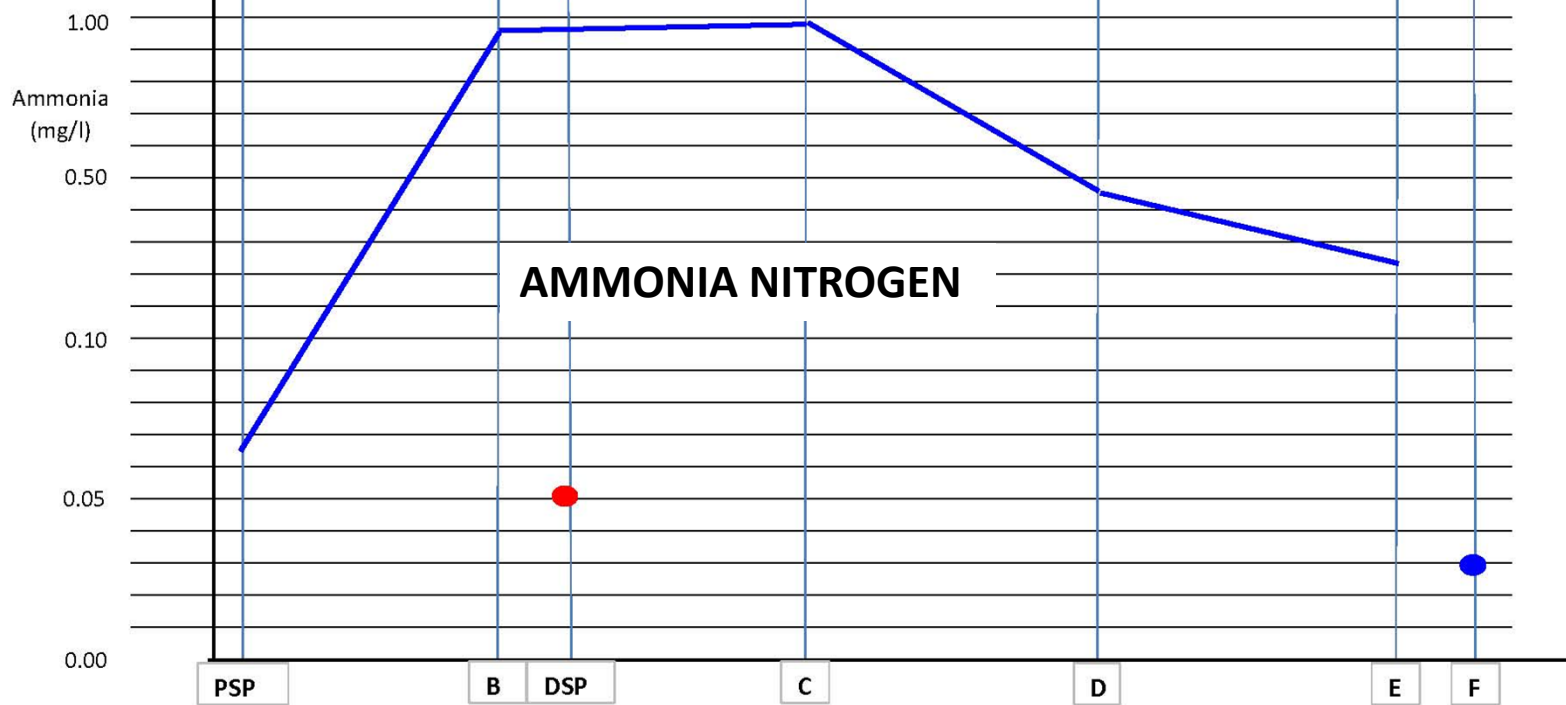
SAMPLING LOCATIONS



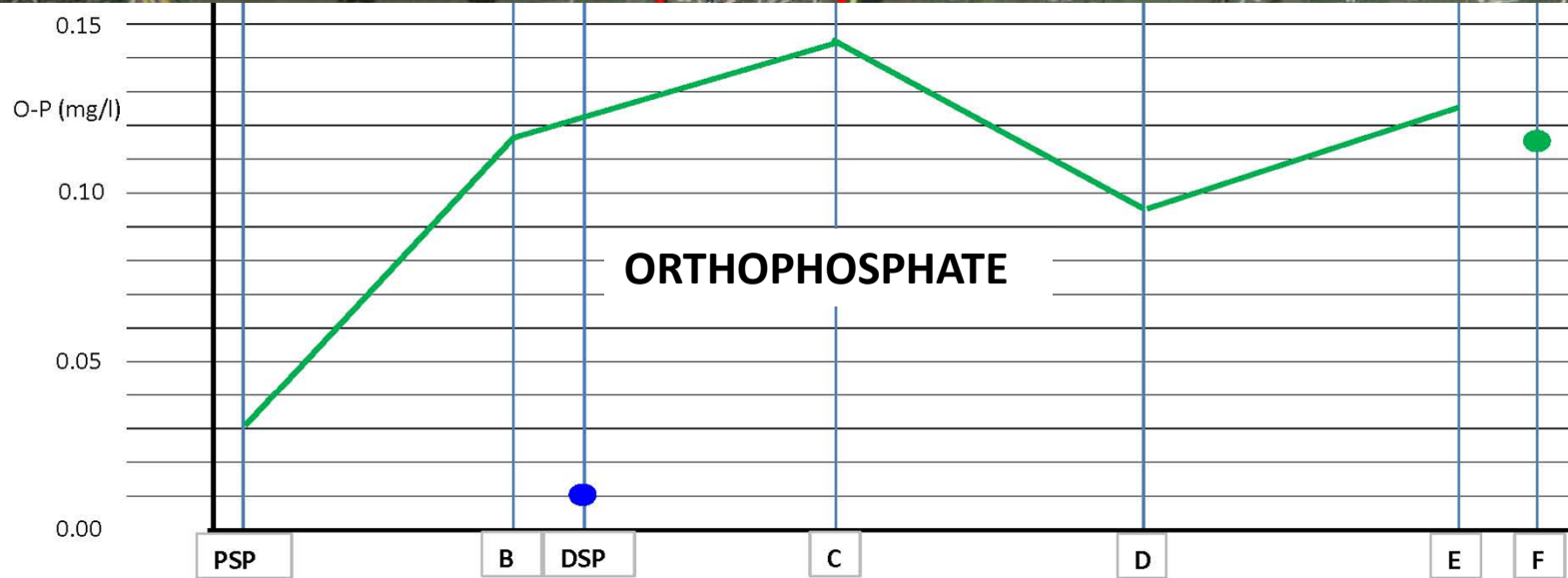
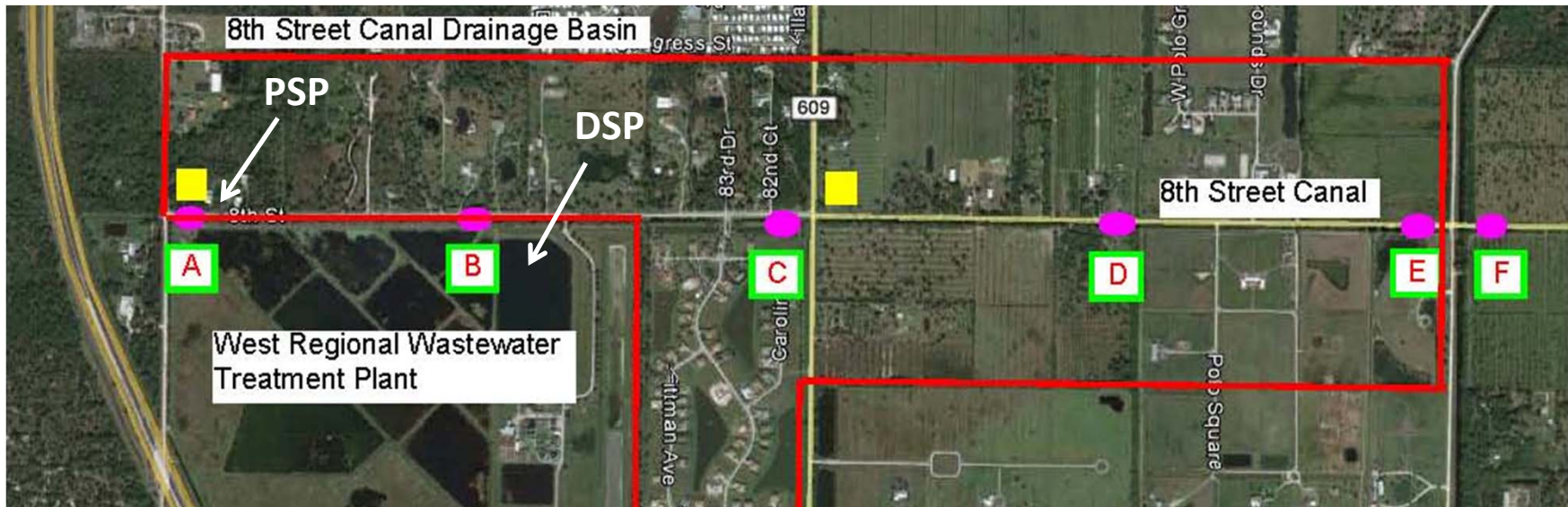
PSP = Pipe discharge into canal from private property
DSP = WRWWTP Deep Settling Pond



SAMPLE DATE	A	PSP	B	DSP	C	D	E	F
7/20/2017	0.025	0.025	0.025	0.025	0.025	0.095	0.130	0.054
8/11/2017	0.025	0.025	0.025	0.025	0.025	0.085	0.240	0.025
AVERAGE	0.025	0.025	0.025	0.025	0.025	0.090	0.185	0.040



SAMPLE DATE	A	PSP	B	DSP	C	D	E	F
7/20/2017	0.140	0.081	0.860	0.053	1.000	0.450	0.280	0.033
8/11/2017	0.027	0.044	0.990	0.049	0.960	0.480	0.160	0.023
AVERAGE	0.084	0.063	0.925	0.051	0.980	0.465	0.220	0.028



SAMPLE DATE	A	PSP	B	DSP	C	D	E	F
7/20/2017	0.038	0.026	0.073	0.008	0.110	0.069	0.140	0.099
8/11/2017	0.088	0.034	0.160	0.013	0.180	0.120	0.110	0.130
AVERAGE	0.063	0.030	0.117	0.011	0.145	0.095	0.125	0.115