

# GREENE FAMILY AFFIDAVIT OF EXEMPTION

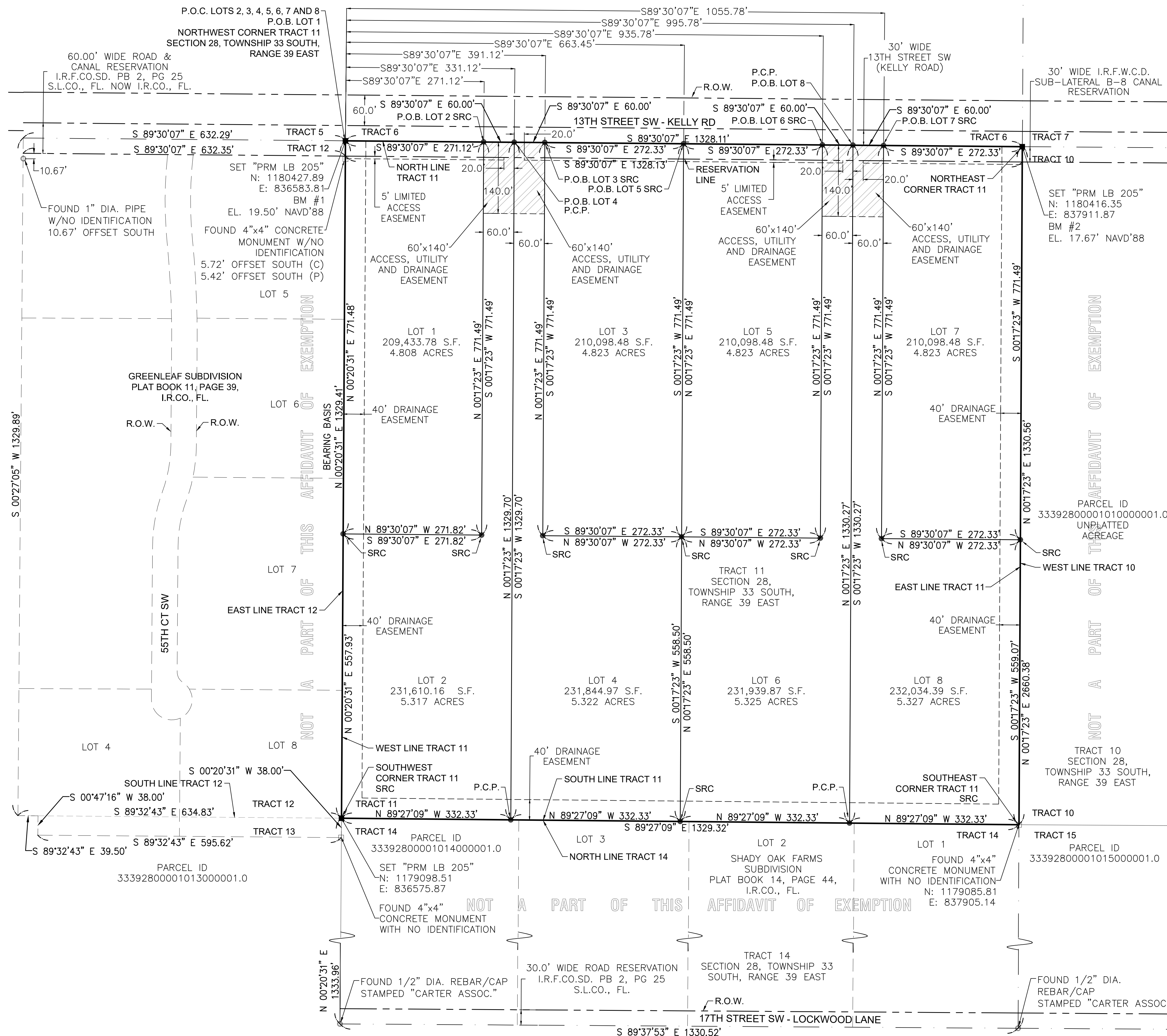
A DIVISION OF LAND UNDER THE AFFIDAVIT OF EXEMPTION PROCESS LYING WITHIN TRACT 11, SECTION 28, TOWNSHIP 33 SOUTH, RANGE 39 EAST, ACCORDING TO THE LAST GENERAL PLAT OF LANDS OF THE INDIAN RIVER FARMS COMPANY SUBDIVISION, AS RECORDED IN PLAT BOOK 2, PAGE 25, ST. LUCIE COUNTY, FLORIDA; SAID LANDS NOW LYING AND BEING IN INDIAN RIVER COUNTY, FLORIDA

THERE MAY BE ADDITIONAL COVENANTS, RESTRICTIONS, OR RESERVATIONS AFFECTING THE OWNERSHIP OR USE OF THE PROPERTY SHOWN THAT ARE NOT RECORDED ON THIS AFFIDAVIT OF EXEMPTION THAT MAY BE FOUND IN THE PUBLIC RECORDS OF INDIAN RIVER COUNTY, FLORIDA.

PLAT BOOK: \_\_\_\_\_

PAGE: \_\_\_\_\_

CFN: \_\_\_\_\_  
CLERK'S FILE NUMBER

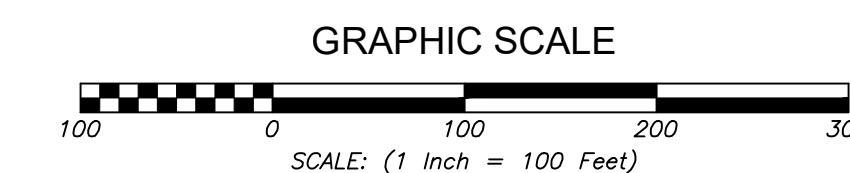


## LEGEND

- B.M. = BENCH MARK
- T.B.M. = TEMPORARY BENCH MARK
- C.R. = COUNTY ROAD
- (C) = CALCULATED DATA
- (D) = DEED OR DESCRIPTION CALL
- (O) = OBSERVED DATA
- (P) = RECORD PLAT DATA
- SD = SUBDIVISION
- EASE. = EASEMENT
- P.B. = PLAT BOOK
- PG. = PAGE
- P.R.M. = PERMANENT REFERENCE MONUMENT
- P.O.B. = POINT OF BEGINNING
- P.O.C. = POINT OF COMMENCEMENT
- R.O.W. = RIGHT-OF-WAY
- E.L. = ELEVATION
- C.M. = CONCRETE MONUMENT
- ORB. = OFFICIAL RECORD BOOK
- ID. = IDENTIFICATION
- I.R.F.W.C.D. = INDIAN RIVER FARMS WATER CONTROL DISTRICT
- I.R.CO., FL. = INDIAN RIVER COUNTY, FLORIDA
- I.R.F.CO., SD. = INDIAN RIVER FARMS COMPANY SUBDIVISION
- S.L.CO., FL. = ST. LUCIE COUNTY, FLORIDA
- NAVD = NORTH AMERICAN VERTICAL DATUM
- [Symbol] = EASEMENT
- [Symbol] = FOUND CONCRETE MONUMENT (4"x4") AS NOTED
- F.D.R.C. = FOUND CORNER AS NOTED
- SET PRM [Symbol] = SET PERMANENT REFERENCE MONUMENT (4"x4"x24" CONCRETE MONUMENT WITH 2" DIAMETER ALUMINUM DISK STAMPED "CARTER ASSOC. PRM LB 205")
- SRC [Symbol] = DENOTES 1/2" DIAMETER X 18" LONG REBAR WITH CAP STAMPED "CARTER ASSOC." (TYP.)
- PCP [Symbol] = DENOTES 1/2" DIAMETER X 18" LONG REBAR WITH ALUMINUM CAP STAMPED "PCP CARTER ASSOC. LB 205"

## GENERAL NOTES:

1. COORDINATE VALUES AND BEARING DATUM ARE BASED UPON THE NORTH AMERICAN DATUM OF 1983, ADJUSTMENT OF 2011 (NAD83/11), AND ARE PROJECTED INTO THE STATE PLANE COORDINATE SYSTEM, FLORIDA EAST ZONE, 0901. THE WEST LINE OF TRACT 11, BEARS NORTH 00°20'31" EAST.
2. THE PERMANENT REFERENCE MONUMENTS WERE CERTIFIED AND/OR SET ON MARCH 17, 2020.
3. PROPERTIES ARE SUBJECT TO INDIAN RIVER COUNTY LAND DEVELOPMENT REGULATIONS (LDRs) IN CHAPTERS 930 AND 934 FOR STORMWATER MANAGEMENT, GRADING AND EXCAVATION OF LAND. PROPOSED ACTIVITY MAY OR MAY NOT BE EXEMPT IN ACCORDANCE WITH INDIAN RIVER COUNTY CODE SECTIONS 934.04 AND 930.06. CONTACT THE COUNTY FOR FURTHER INFORMATION.



THIS INSTRUMENT WAS PREPARED BY: DAVID E. LUETHJE, P.S.M.  
DATE: MARCH 10, 2020  
**CARTER ASSOCIATES, INC.**  
CONSULTING ENGINEERS AND PROFESSIONAL SURVEYORS AND MAPPERS  
1708 21st. STREET  
VERO BEACH, FLORIDA 32960  
TEL.(772) 562-4191 FAX.(772) 562-7180  
PROJECT # 19-412S