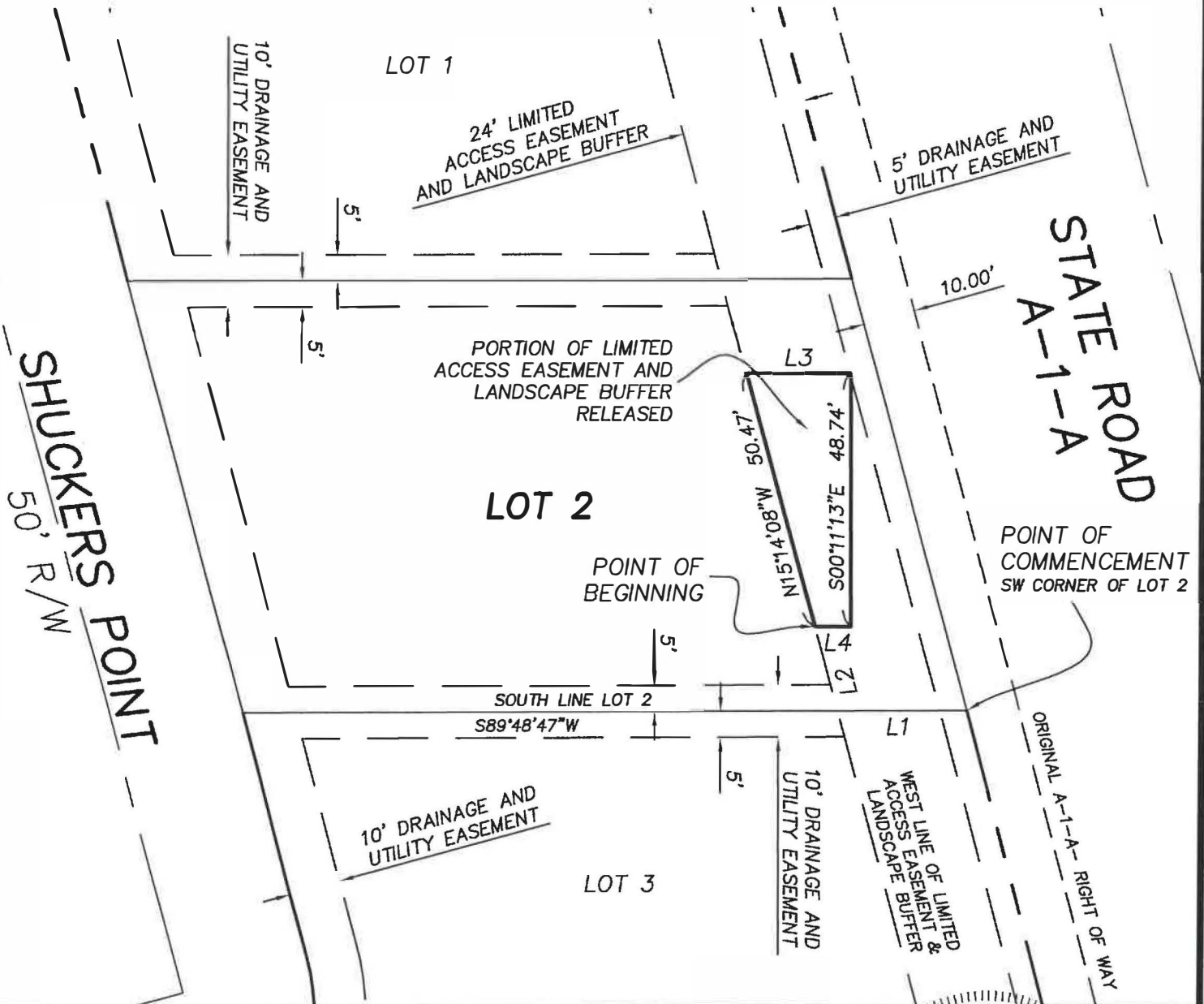


**Sketch of Legal Description
for Release of a Portion of the
Limited Access Easement &
Landscape Buffer of Lot 2,
Oyster Bay Subdivison
Indian River County, Florida**

Sheet 2 of 2
Not Valid Without All Sheets

Line Table		
Line #	Length	Direction
L1	24.85	S89° 48' 47"W
L2	16.74	N15° 14' 08"W
L3	19.90	N89° 48' 47"E
L4	6.80	S89° 48' 47"W



SKETCH OF LEGAL DESCRIPTION
"This is NOT a Boundary Survey"

Drawn by: BMM
Checked by: DMT

File name: 7819

Date: 3/17/2021

Scale: 1" = 30'

Drawing Name: 7819-release.dwg



Masteller, Moler & Taylor, Inc.

PROFESSIONAL SURVEYORS AND MAPPERS

LAND SURVEYING BUSINESS #4644

1655 27th Street, Suite 2 Vero Beach, Florida 32960
Phone: (772) 564-8050 Fax: (772) 794-0647

NOT VALID WITHOUT THE SIGNATURE AND
THE ORIGINAL RAISED SEAL OF A FLORIDA
LICENSED SURVEYOR AND MAPPER

STATE OF FLORIDA
DAVID TAYLOR P.L.S. 5243