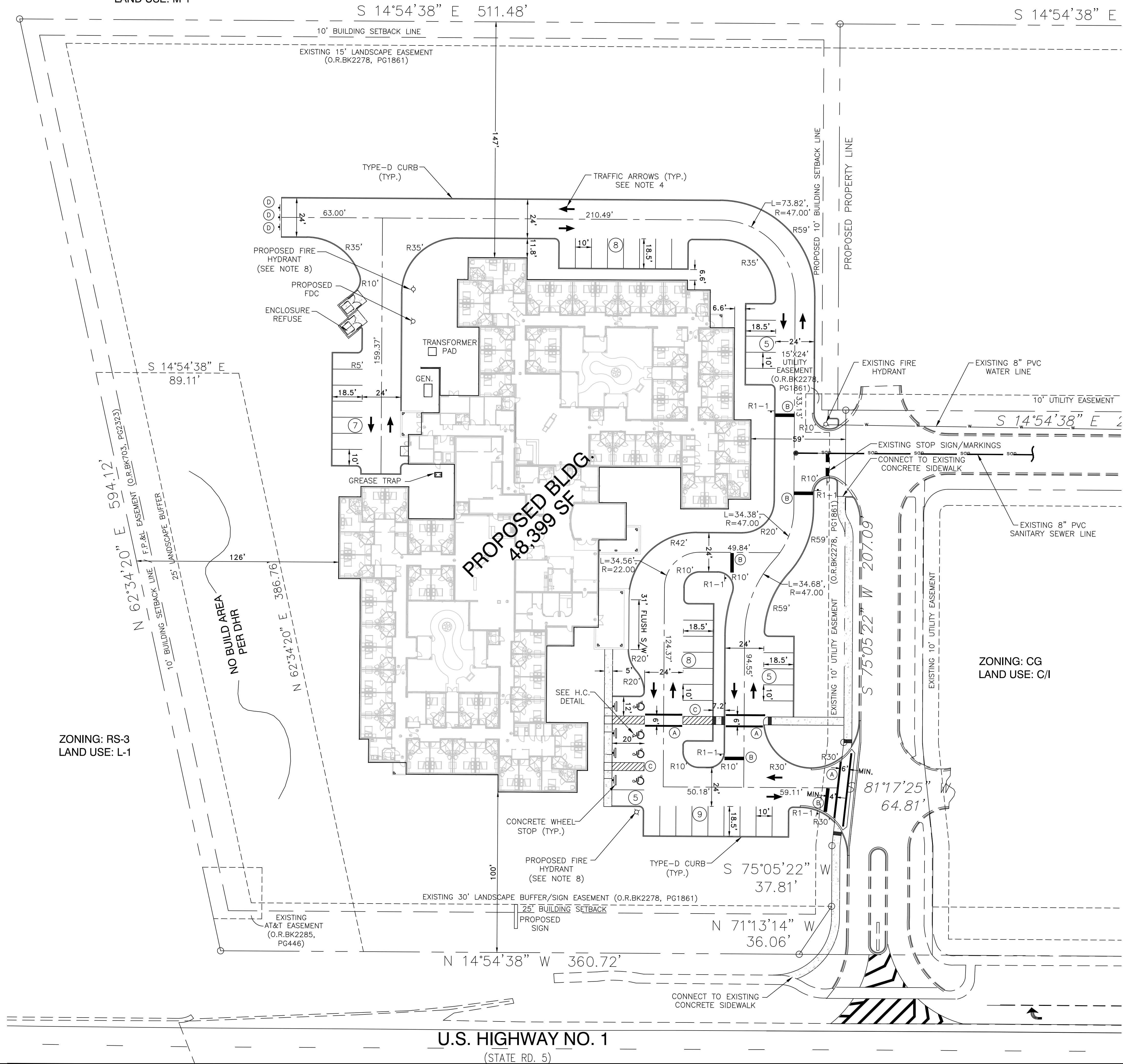
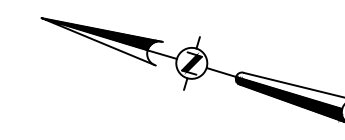


ZONING: RM-6
LAND USE: M-1



ZONING: RS-3
LAND USE: L-1

ZONING: CG
LAND USE: C/I

U.S. HIGHWAY NO. 1
(STATE RD. 5)

| NO. | DATE | DESCRIPTION |
|-----|----------|-----------------------------|
| 3 | 10/24/17 | REVISED PER I.R.C. COMMENTS |
| 2 | 12/20/17 | REVISED PER I.R.C. COMMENTS |
| 1 | 10/24/17 | REVISED PER I.R.C. COMMENTS |

SCALE: 1" = 30'

DRAWN BY: DBB

DATE: 05-01-17

THESE PLANS MAY NOT BE COPIED OR MODIFIED WITHOUT WRITTEN PERMISSION FROM MCP DESIGN, LLC

DAVID BEYER, P.E. #77386
NOT VALID UNLESS SIGNED & EMBOSSED BY A REGISTERED ENGINEER

4798 NEW BROAD ST. SUITE 220
ORLANDO FLORIDA 32814

• 321.800.6042 ph
• 407.599.4445 fax



CERTUS OF VERO BEACH
INDIAN RIVER COUNTY, FLORIDA

SITE GEOMETRY PLAN