

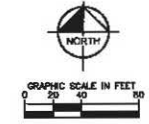
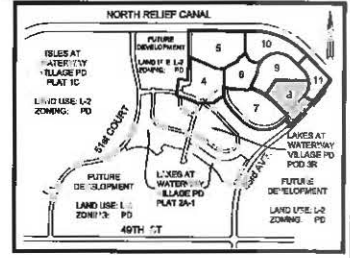
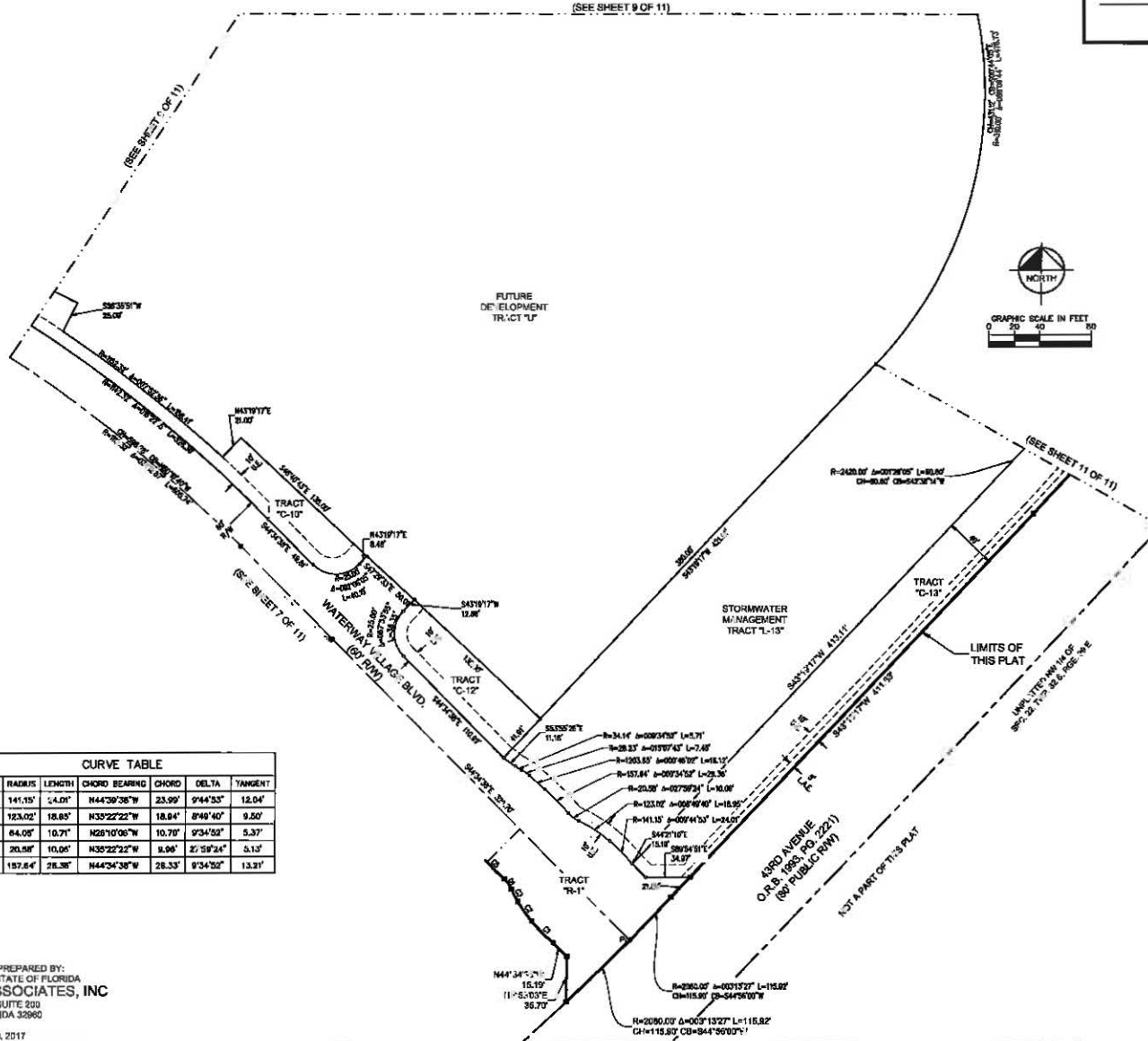
LAKES AT WATERWAY VILLAGE PD - PODS S, T

BEING A REPLAT OF A PORTION OF TRACT 1, SECTION 21, TOWNSHIP 32 SOUTH, RANGE 39 EAST, INDIAN RIVER PARISH CO. PLAT OF LANDS AND PLAN FOR LAND DRAINAGE AND ROAD RESERVATIONS, ACCORDING TO THE PLAT THEREOF, AS RECORDED IN PLAT BOOK 2, PAGE 25, PUBLIC RECORDS OF ST. LUCIE COUNTY, FLORIDA, NOW BEING IN INDIAN RIVER COUNTY, FLORIDA, AND A PORTION OF THE SOUTHWEST ONE-QUARTER (S.W. 1/4) OF SECTION 15, TOWNSHIP 32 SOUTH, RANGE 39 EAST AND A PORTION OF THE NORTHWEST ONE-QUARTER (N.W. 1/4) OF SECTION 22, TOWNSHIP 32 SOUTH, RANGE 39 EAST AND A PORTION OF THE SOUTHEAST ONE-QUARTER (S.E. 1/4) OF SECTION 16, TOWNSHIP 32, RANGE 39 EAST, INDIAN RIVER COUNTY, FLORIDA

PLAT BOOK _____

PAGE _____

DOCKET NUMBER _____



CURVE	RADIUS	LENGTH	CHORD BEARING	CHORD	DELTA	TANGENT
C1	141.15'	14.01'	N44°39'38"W	23.99'	9°44'53"	12.04'
C2	123.02'	18.85'	N39°22'22"W	18.64'	8°49'40"	9.50'
C3	64.08'	10.71'	N28°10'08"W	10.70'	9°34'52"	5.37'
C4	20.88'	10.04'	N35°22'22"W	8.98'	2°19'34"	5.13'
C5	187.64'	28.38'	N44°34'38"W	28.33'	9°34'52"	13.21'

- KEY**
N.T.S.
- LEGEND OF SYMBOLS**
- PLAT BOUNDARY
 - PAIR 23 LINE
 - DRAINAGE EASEMENT LINE
 - EASEMENT LINE
 - ROAD CENTERLINE
 - SECTION LINE
 - LATCH LINE
 - (#) LOT NUMBER
 - P.M. AND C.M.D. OR R.D. LOCATED PERM. MON. LB. OR "B" NOTED
 - P.M. AND D.S.D. STAKED PERM. MON. LB. OR "B" NOTED
 - LOT CORNER
- ABBREVIATIONS**
- A DELTA (CENTRAL ANGLE)
 - CB CHORD BEARING
 - CDR CERTIFIED OWNER RECORD
 - CD DISTANCE
 - CMO CONCRETE MONUMENT AND DISK
 - D.E. DRAINAGE EASEMENT
 - ARC LENGTH
 - L.A.E. LIMITED ACCESS EASEMENT
 - LB LATCH LINE BEARINGS
 - NONADJ. NONADJACENT
 - ORB OFFICIAL RECORDS BOOK
 - PL. PLAT
 - P.B. PLAT BOOK
 - P.C. POINT OF CURVATURE
 - P.C.D. POINT OF COMPOUND CURVATURE
 - P.M.C. PERMANENT MONUMENT CONTROL POINT
 - P.P. PAGE
 - P.I. POINT OF INTERSECTION
 - P.O.B. POINT OF BEGINNING
 - P.R.M. PERMANENT REFERENCE MONUMENT
 - PT POINT OF TANGENCY
 - R RADIUS
 - RADJ. RADIAL
 - RHS RIGHT OF WAY
 - R.P. RIGHT OF WAY
 - SEC SECTION
 - TWP. TOWNSHIP
 - HC/HOD WITH CAP
 - S.E. SOUTHEAST
 - N.A. NORTH ANGLE ON VERTICAL DATUM OF 1988
 - U.S. UTILITY EASEMENT
 - N.T.S. WATER AND SEWER EASEMENT

Printed by: Kimley-Horn and Associates, Inc. 445 24th Street, Suite 200, Vero Beach, Florida 32980, LB 888, ON OCTOBER 10, 2017.

THIS INSTRUMENT WAS PREPARED BY:
 E.C. DEMETER P.S.M. S.F.P. STATE OF FLORIDA
KIMLEY-HORN AND ASSOCIATES, INC
 445 24TH STREET, SUITE 200
 VERO BEACH, FLORIDA 32980
 LB 888
 ON OCTOBER 10, 2017

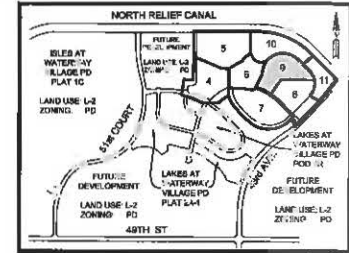
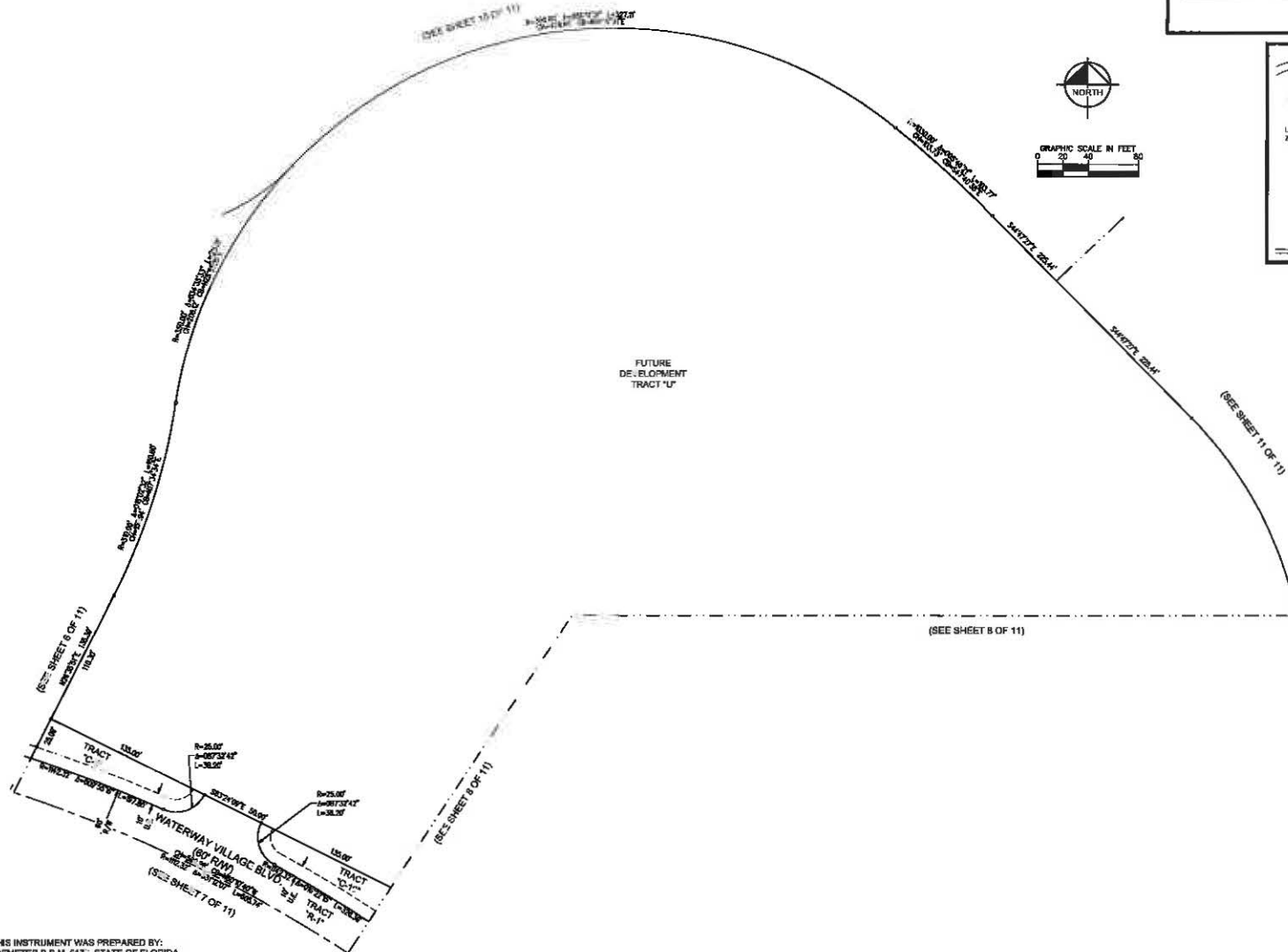
LAKES AT WATERWAY VILLAGE PD - PODS S, T

BEING A REPLAT OF A PORTION OF TRACT 1, SECTION 21, TOWNSHIP 32 SOUTH, RANGE 39 EAST, INDIAN RIVER COUNTY, FLORIDA, PLAT OF LANDS AND PLAN FOR LAND DRAINAGE AND ROAD RESERVATIONS, ACCORDING TO THE PLAT THEREOF, AS RECORDED IN PLAT BOOK 2, PAGE 25, PUBLIC RECORDS OF ST. LUCIE COUNTY, FLORIDA, NOW BEING IN INDIAN RIVER COUNTY, FLORIDA, AND A PORTION OF THE SOUTHWEST ONE-QUARTER (S.W. 1/4) OF SECTION 15, TOWNSHIP 32 SOUTH, RANGE 39 EAST AND A PORTION OF THE NORTHWEST ONE-QUARTER (N.W. 1/4) OF SECTION 22, TOWNSHIP 32 SOUTH, RANGE 39 EAST AND A PORTION OF THE SOUTHEAST ONE-QUARTER (S.E. 1/4) OF SECTION 16, TOWNSHIP 32, RANGE 39 EAST, INDIAN RIVER COUNTY, FLORIDA

PLAT BOOK _____

PAGE _____

DOCKET NUMBER _____



KEY MAP

LEGEND OF SYMBOLS

- PLAT BOUNDARY
- PARCEL LINE
- DRAINAGE BASIN LINE
- EGRESS LINE
- R.C. CENTER LINE
- SECTION LINE
- MATCH LINE
- (#) LOT NUMBER
- P.M. 4x4 CAD OR ISO STAMPED "P.M. 1/8\"
- P.M. 1/2\"
- LOT L.G.A.N.E.R.

ABBREVIATIONS

- Δ DELTA (CENTRAL ANGLE)
- CLY CLY (CLAY)
- C.R. CERTIFIED CORNER RECORD
- CD CHORD DISTANCE
- C.M.D. CONCRETE MONUMENT AND DISK
- D.S.E. DRAINAGE EGRESS
- L. ARC LENGTH
- L.A.E. LIMITED ACCESS EASEMENT
- L.B. L.S. (L.S. BUSINESS)
- N.R. NON-RACIAL
- O.R. OFFICIAL RECORD BOOK
- P.L. PLAT BOOK
- P.O.C. POINT OF CURVATURE
- P.O.C.P. POINT OF COMPOUND CURVATURE
- P.O.C.F. POINT OF CURVATURE FUTURE
- P.O.C.P. PERMANENT CONTROL POINT
- P.O.I. POINT OF INTERSECTION
- P.O.R. POINT OF BEGINNING
- P.M. PERMANENT REFERENCE MONUMENT
- P.T. POINT OF TANGENCY
- R. RADIAL
- R.A.D. RADIUS
- R.W. RIGHT-OF-WAY
- S.E. SECTION
- T.M.P. TYPICAL
- T.O.P. TOP
- U.S. U.S. (UNITED STATES)
- N.T.D.M. NORTH AMERICAN VERTICAL DATUM OF 1988
- U.E. UTILITY EASEMENT
- W.B.E. WATER AND SEWER EASEMENT

THIS INSTRUMENT WAS PREPARED BY:
 E.G. DEMETER P.S.M. 6176, STATE OF FLORIDA
KIMLEY-HORN AND ASSOCIATES, INC
 445 24TH STREET, SUITE 200
 VERO BEACH, FLORIDA 32960
 LS 909
 ON OCTOBER 10, 2017

Plotted: C:\Projects\Waterway Village PD - Pods S, T\Plat 10-11.dwg
 Plot Date: 10/11/2017 10:11:22 AM
 Plotter: E:\Users\jgordon\OneDrive\Documents\Waterway Village PD - Pods S, T\Plat 10-11.dwg

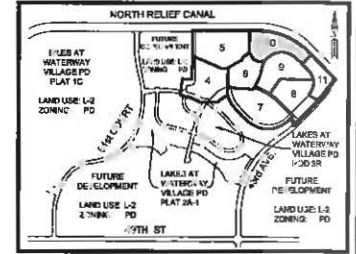
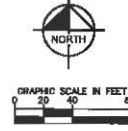
LAKES AT WATERWAY VILLAGE PD - PODS S, T

BEING A REPLAT OF A PORTION OF TRACT 1, SECTION 21, TOWNSHIP 32 SOUTH, RANGE 39 EAST, INDIAN RIVER COUNTY, FLORIDA, PLAT OF LANDS AND PLAN FOR LAND DRAINAGE AND ROAD RESERVATIONS, ACCORDING TO THE PLAT THEREOF, AS RECORDED IN PLAT BOOK 2, PAGE 26, PUBLIC RECORDS OF ST. LUCIE COUNTY, FLORIDA, NOW BEING IN INDIAN RIVER COUNTY, FLORIDA, AND A PORTION OF THE SOUTHWEST ONE-QUARTER (S.W. 1/4) OF SECTION 15, TOWNSHIP 32 SOUTH, RANGE 39 EAST AND A PORTION OF THE NORTHWEST ONE-QUARTER (N.W. 1/4) OF SECTION 22, TOWNSHIP 32 SOUTH, RANGE 39 EAST AND A PORTION OF THE SOUTHEAST ONE-QUARTER (S.E. 1/4) OF SECTION 16, TOWNSHIP 32, RANGE 39 EAST, INDIAN RIVER COUNTY, FLORIDA

PLAT BOOK _____

PAGE _____

DOCKET NUMBER _____



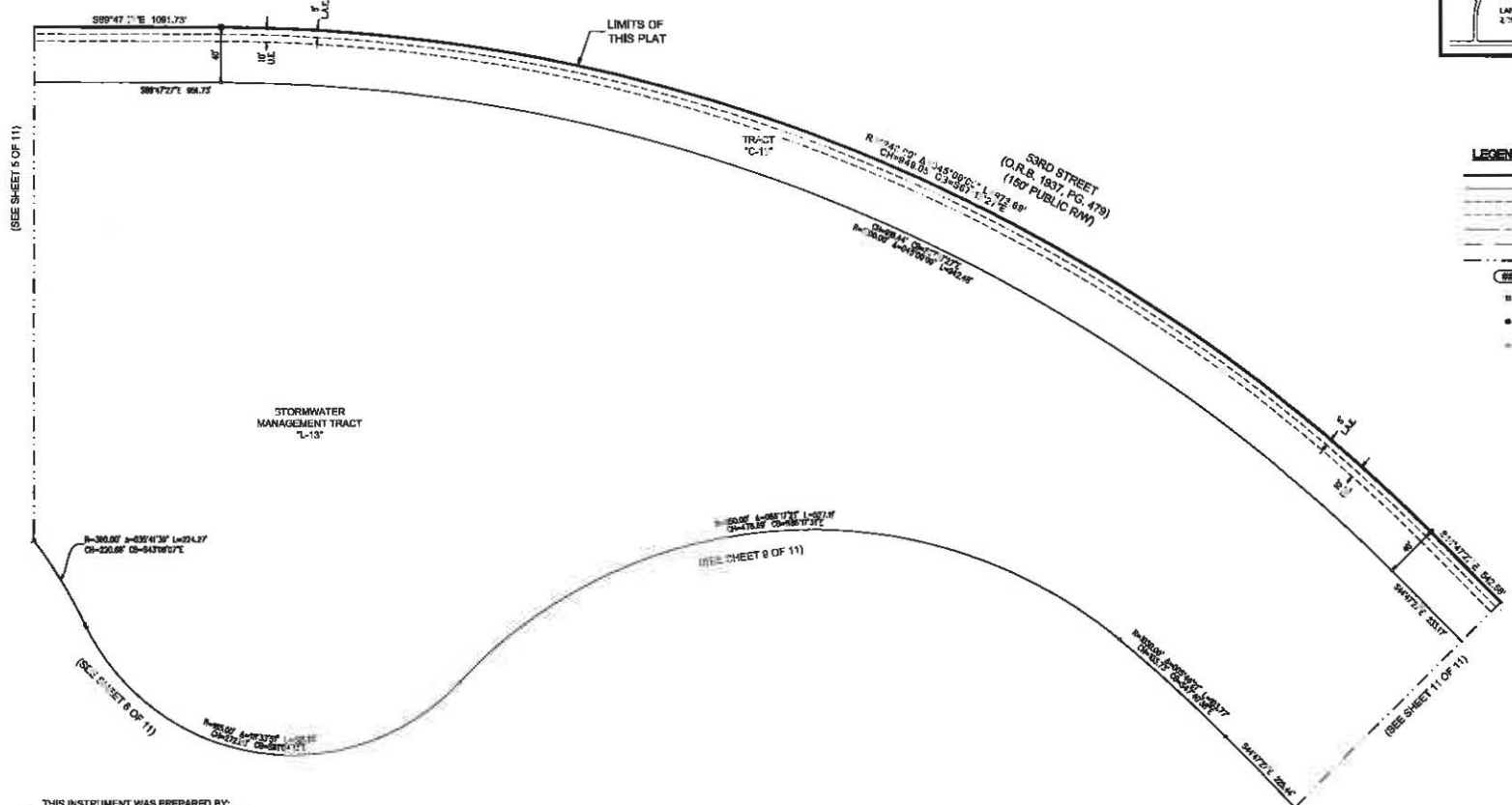
KEY MAP
N.T.S.

LEGEND OF SYMBOLS

- PLAT BOUNDARY
- PARTIAL LINE
- ORANGE BARRIERS
- EASEMENT LINE
- ROAD CENTER LINE
- SECTION LINE
- MATCH LINE
- LOT NUMBER
- PRM. AND CMO OR INC. STAMPED
"PRM. OR CMO OR INC. STAMPED"
- POP. MAIL AND DEC. STAMPED
"POP. MAIL AND DEC. STAMPED"
- LOT CORNER

ABBREVIATIONS

- Δ DELTA (CENTRAL ANGLE)
- DB DE BEARINGS
- CD CHORD DISTANCE
- CDM CHORD DISTANCE
- D.E. DRAINAGE EASEMENT
- L.A.E. LIMITED AREA EASEMENT
- LB LICENSED BUSINESS
- NUL. NON-UTILITY
- ORND OFFICIAL RECORDS BOOK
- P.B. PLAT BOOK
- P.C. POINT OF CURVATURE
- P.C.C. POINT OF COMPOUND CURVATURE
- P.F.M. POINT OF FUTURE MOVEMENT
- P.M. PERMANENT CONTROL POINT
- P.M. POINT OF INTERSECTION
- P.M. POINT OF BEGINNING
- P.M. POINT OF TANGENCY
- R. RADIUS
- R. R. RADIUS
- R. R. RANGE
- R.W. RIGHT-OF-WAY
- S. SECTION
- T. TYPICAL
- T.M. TOWN WITH MAP
- U.S. NORTH AMERICAN VERTICAL DATUM OF 1983
- U.E. UTILITY EASEMENT
- W.E. WATER AND SEWER EASEMENT



THIS INSTRUMENT WAS PREPARED BY:
E.G. DEMETER P.S.M. 5179, STATE OF FLORIDA
KIMLEY-HORN AND ASSOCIATES, INC
446 NORTH STREET, SUITE 200
VERO BEACH, FLORIDA 32980
LB 898
ON OCTOBER 10, 2017

