

HAMPTON WOODS EAST PD SUBDIVISION

BEING A REPLAT OF A PORTION OF THE REPLAT OF SYRILLA PINAR AS RECORDED IN PLAT BOOK 2, PAGE 59,
PUBLIC RECORDS OF INDIAN RIVER COUNTY, FLORIDA.

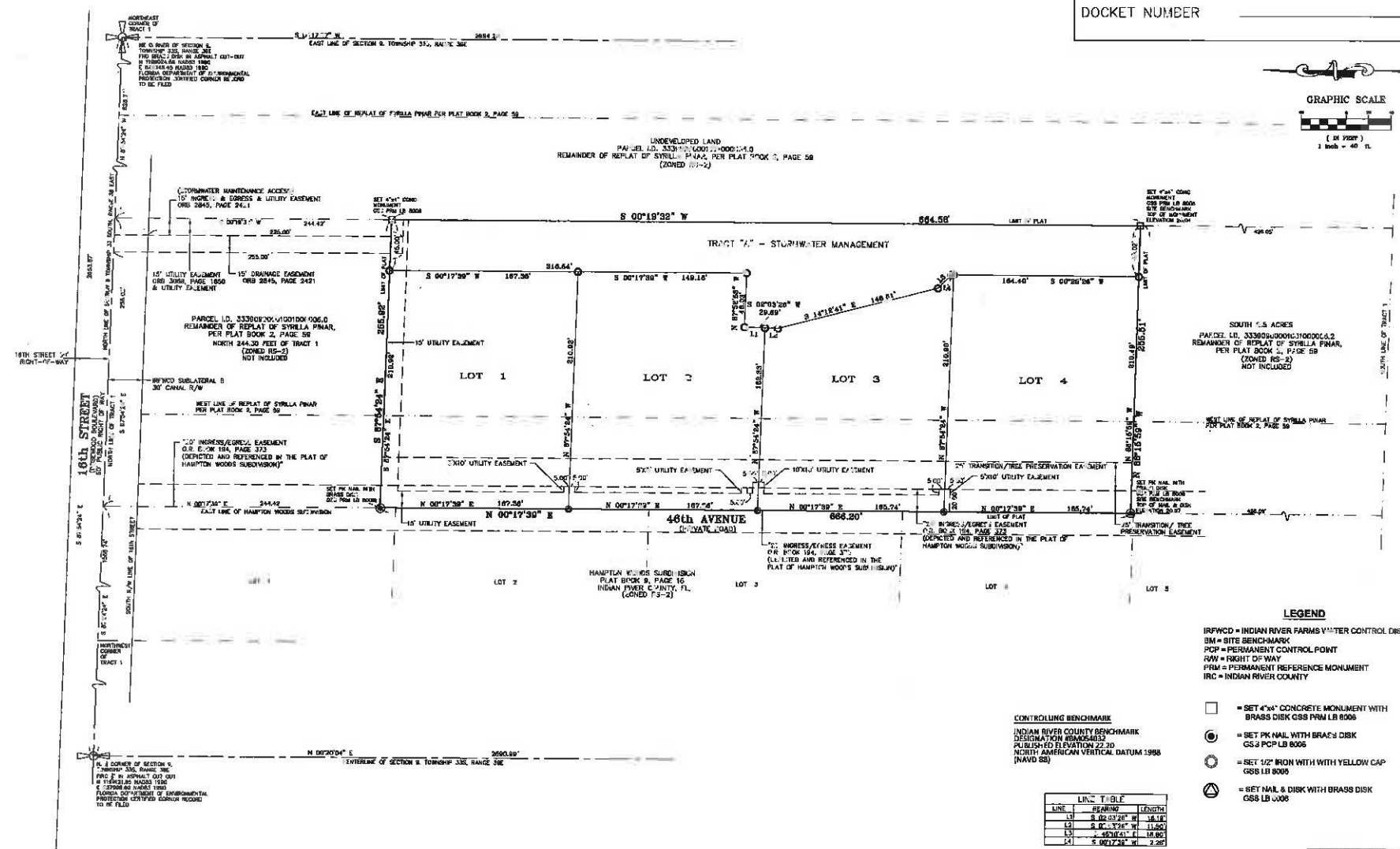
PLAT BOOK _____

PAGE _____

DOCKET NUMBER _____



GRAPHIC SCALE



LEGEND

- IRPWCD = INDIAN RIVER FARMS WATER CONTROL DISTRICT
- BM = SITE BENCHMARK
- PCP = PERMANENT CONTROL POINT
- R/W = RIGHT OF WAY
- PRM = PERMANENT REFERENCE MONUMENT
- IRC = INDIAN RIVER COUNTY

CONTROLLING BENCHMARK

INDIAN RIVER COUNTY BENCHMARK
DESIGNATION BRW4543
PUBLISHED ELEVATION 22.20
NORTH AMERICAN VERTICAL DATUM 1988
(NAVD 88)

LINE	BEARING	LENGTH
L1	S 00°19'30" W	187.38'
L2	S 00°17'30" W	187.74'
L3	S 00°17'30" W	185.74'
L4	S 00°17'30" W	2.28'

- = SET 4"x4" CONCRETE MONUMENT WITH BRASS DISK GSS PRM LB 8008
- = SET PK NAIL WITH BRASS DISK GSS PCP LB 8008
- = SET 1/2" IRON NAIL WITH YELLOW CAP GSS LB 8008
- ⊙ = SET NAIL & DISK WITH BRASS DISK GSS LB 8008

SHEET 3 OF 3



Surveying and Mapping, LLC
2945 20th St.
Vero Beach, FL 32960
321-914-3978