

ORDINANCE NO. 2019-_____

AN ORDINANCE OF INDIAN RIVER COUNTY FLORIDA, AMENDING THE ZONING ORDINANCE AND THE ACCOMPANYING ZONING MAP FROM RS-3, SINGLE-FAMILY RESIDENTIAL (UP TO 3 UNITS/ACRE) AND CON-2, ESTUARINE WETLANDS CONSERVATION DISTRICT, TO PD, PLANNED DEVELOPMENT, FOR APPROXIMATELY 413.01 ACRES OF LAND GENERALLY LOCATED ON THE EAST SIDE OF US HIGHWAY 1 BETWEEN THE NORTH RELIEF CANAL AND 63RD STREET AND DESCRIBED HEREIN AND PROVIDING FOR AN EFFECTIVE DATE.

WHEREAS, the Planning and Zoning Commission, sitting as the local planning agency on such matters, held a public hearing and subsequently considered this rezoning request; and

WHEREAS, the Board of County Commissioners of Indian River County, Florida, did publish and send its Notice of Intent to rezone the hereinafter described property; and

WHEREAS, the Board of County Commissioners determined that this rezoning is in conformance with the Comprehensive Plan of Indian River County; and

WHEREAS, the Board of County Commissioners held a public hearing pursuant to this rezoning request, at which parties in interest and citizens were heard;

NOW, THEREFORE, BE IT ORDAINED, by the Board of County Commissioners of Indian River County, Florida, that the zoning of the following described properties situated in Indian River County, Florida, to-wit:

LEGAL DESCRIPTIONS:

PARCEL 1

BEING A PART OF SECTIONS 11 AND 14, TOWNSHIP 32 SOUTH, RANGE 39 EAST, INDIAN RIVER COUNTY, FLORIDA, BEING MORE FULLY DESCRIBED AS FOLLOWS:

BEGINNING AT THE NORTHWEST CORNER OF SAID SECTION 14; THENCE N00°14'03"E ALONG THE WEST LINE OF SAID SECTION 11, A DISTANCE OF 1,277.51 FEET TO THE SOUTH RIGHT OF WAY LINE OF 63RD STREET AS DESCRIBED IN OFFICIAL RECORD BOOK 2176, PAGE 1003 OF THE PUBLIC RECORDS OF INDIAN RIVER COUNTY, FLORIDA; THENCE S89°14'23"E ALONG SAID SOUTH RIGHT OF WAY LINE, A DISTANCE OF 332.81 FEET; THENCE LEAVING SAID SOUTH RIGHT OF WAY LINE S00°14'03"W, A DISTANCE OF 690.57 FEET; THENCE S89°03'12"E, A DISTANCE OF 332.00 FEET; THENCE N00°14'03"E, A DISTANCE OF 691.65 FEET TO THE SOUTH RIGHT OF WAY LINE OF SAID 63RD STREET ; THENCE S89°14'23"E ALONG SAID SOUTH RIGHT OF WAY LINE, A DISTANCE OF 1,959.65 FEET TO THE EAST LINE OF THE SOUTHWEST QUARTER OF SAID SECTION 11; THENCE S00°01'13"W ALONG SAID EAST LINE, A DISTANCE OF 1,294.98 FEET TO THE SOUTHEAST CORNER OF THE SOUTHWEST QUARTER OF SAID SECTION 11, THE SAME BEING THE NORTHWEST CORNER OF AN EASEMENT AS DESCRIBED IN OFFICIAL RECORD BOOK 2136, PAGE 445; THENCE ALONG SAID EASEMENT THE FOLLOWING; THENCE S10°28'56"W A

DISTANCE OF 40.54 FEET; THENCE S01°08'10"W A DISTANCE OF 39.46 FEET TO A POINT OF CURVATURE OF A CIRCULAR CURVE; THENCE SOUTHEASTERLY ALONG SAID CURVE, HAVING A RADIUS OF 287.32 FEET, THROUGH A CENTRAL ANGLE OF 49°14'10" FOR AN ARC LENGTH OF 246.91 FEET TO A POINT OF REVERSE CURVATURE OF A CIRCULAR CURVE; THENCE SOUTHEASTERLY ALONG SAID CURVE, HAVING A RADIUS OF 214.00 FEET, THROUGH A CENTRAL ANGLE OF 23°15'41", FOR AN ARC LENGTH OF 86.88 FEET; THENCE S24°50'20"E A DISTANCE OF 63.89 FEET; THENCE S06°13'27"E A DISTANCE OF 161.22 FEET; THENCE S28°35'36"E A DISTANCE OF 251.50 FEET TO A POINT OF CURVATURE OF A CIRCULAR CURVE; THENCE SOUTHEASTERLY ALONG SAID CURVE HAVING A RADIUS OF 946.00 FEET, THROUGH A CENTRAL ANGLE OF 8°21'19", FOR AN ARC LENGTH OF 137.95 FEET; THENCE S36°56'55"E A DISTANCE OF 433.61 FEET; THENCE S39°04'20"E A DISTANCE OF 103.98 FEET TO A POINT OF CURVATURE OF A CIRCULAR CURVE; THENCE SOUTHEASTERLY ALONG SAID CURVE, HAVING A RADIUS OF 214.00 FEET, THROUGH A CENTRAL ANGLE OF 59°46'12" FOR AN ARC LENGTH OF 223.24 FEET TO A POINT OF REVERSE CURVATURE OF A CIRCULAR CURVE; THENCE SOUTHEASTERLY ALONG SAID CURVE, HAVING A RADIUS OF 186.00 FEET, THROUGH A CENTRAL ANGLE OF 82°45'44", FOR AN ARC LENGTH OF 268.67 FEET TO A POINT OF REVERSE CURVATURE OF A CIRCULAR CURVE; THENCE SOUTHEASTERLY ALONG SAID CURVE, HAVING A RADIUS OF 504.00 FEET, THROUGH A CENTRAL ANGLE OF 18°29'01", FOR AN ARC LENGTH OF 162.59 FEET; THENCE S43°34'50"E A DISTANCE OF 89.68 FEET; THENCE LEAVING SAID EASEMENT LINE, N63°47'18"E, A DISTANCE OF 148.61 FEET; THENCE N64°56'00"E, A DISTANCE OF 54.82 FEET; THENCE N67°17'12"E, A DISTANCE OF 64.33 FEET; THENCE N60°34'42"E, A DISTANCE OF 77.19 FEET; THENCE N58°52'09"E, A DISTANCE OF 72.27 FEET; THENCE N62°29'59"E, A DISTANCE OF 91.32 FEET; THENCE N60°35'17"E, A DISTANCE OF 192.09 FEET; THENCE N60°41'47"E, A DISTANCE OF 148.98 FEET; THENCE N59°11'58"E, A DISTANCE OF 155.42 FEET; THENCE N60°34'57"E, A DISTANCE OF 195.45 FEET; THENCE N61°45'59"E, A DISTANCE OF 245.74 FEET; THENCE N59°14'52"E, A DISTANCE OF 92.90 FEET; THENCE N85°13'15"E, A DISTANCE OF 51.01 FEET; THENCE S06°46'41"W, A DISTANCE OF 20.48 FEET; THENCE S64°09'20"W, A DISTANCE OF 17.78 FEET; THENCE S68°48'10"W, A DISTANCE OF 83.66 FEET; THENCE S62°20'58"W, A DISTANCE OF 131.80 FEET; THENCE S62°25'23"W, A DISTANCE OF 183.61 FEET; THENCE S60°54'44"W, A DISTANCE OF 153.24 FEET; THENCE S61°55'23"W, A DISTANCE OF 62.15 FEET; THENCE S59°43'19"W, A DISTANCE OF 205.44 FEET; THENCE S60°03'43"W, A DISTANCE OF 174.83 FEET; THENCE S61°10'43"W, A DISTANCE OF 119.27 FEET; THENCE S60°38'34"W, A DISTANCE OF 76.26 FEET; THENCE S63°21'15"W, A DISTANCE OF 94.11 FEET; THENCE S66°02'58"W, A DISTANCE OF 100.98 FEET; THENCE S63°36'23"W, A DISTANCE OF 105.34 FEET; THENCE S42°23'34"E, A DISTANCE OF 16.86 FEET; THENCE S45°49'35"E, A DISTANCE OF 24.02 FEET; THENCE S67°42'39"E, A DISTANCE OF 38.12 FEET; THENCE S44°32'47"E, A DISTANCE OF 29.20 FEET; THENCE S46°44'04"E, A DISTANCE OF 26.70 FEET; THENCE S36°42'30"E, A DISTANCE OF 24.71 FEET; THENCE S26°12'44"E, A DISTANCE OF 41.18 FEET; THENCE S22°36'56"E, A DISTANCE OF 23.01 FEET; THENCE S20°51'26"E, A DISTANCE OF 40.27 FEET; THENCE S23°07'53"E, A

ORDINANCE NO. 2019-_____

DISTANCE OF 46.93 FEET; THENCE S24°21'06"E, A DISTANCE OF 51.43 FEET; THENCE S37°26'39"E, A DISTANCE OF 19.20 FEET; THENCE S44°12'16"E, A DISTANCE OF 20.37 FEET; THENCE S47°28'14"E, A DISTANCE OF 19.59 FEET; THENCE S45°31'50"E, A DISTANCE OF 20.72 FEET; THENCE S42°08'11"E, A DISTANCE OF 18.57 FEET; THENCE S38°26'20"E, A DISTANCE OF 13.72 FEET; THENCE S33°09'07"E, A DISTANCE OF 38.64 FEET; THENCE S18°54'57"E, A DISTANCE OF 22.82 FEET; THENCE S09°56'22"E, A DISTANCE OF 43.35 FEET; THENCE S08°23'47"E, A DISTANCE OF 74.82 FEET; THENCE S07°16'04"E, A DISTANCE OF 40.22 FEET; THENCE S04°21'51"E, A DISTANCE OF 46.40 FEET; THENCE S00°34'50"W, A DISTANCE OF 77.74 FEET TO THE NORTH RIGHT OF WAY LINE OF THE NORTH RELIEF CANAL AS SHOWN ON THE PLAT OF INDIAN RIVER FARMS COMPANY SUBDIVISION AS RECORDED IN PLAT BOOK 2 PAGE 25 PUBLIC RECORDS OF ST. LUCIE COUNTY, FLORIDA, NOW LYING AND BEING IN INDIAN RIVER COUNTY, FLORIDA; THENCE ALONG SAID NORTH RIGHT OF WAY LINE N89°25'10"W, A DISTANCE OF 1419.63 FEET TO AN INTERSECTION WITH THE EAST LINE OF THE SOUTHWEST ONE QUARTER OF SAID SECTION 14; THENCE CONTINUE ALONG SAID RIGHT OF WAY AND ALONG SAID EAST LINE S00°48'51"W A DISTANCE OF 50.50 FEET TO A NON-TANGENT POINT ON A CIRCULAR CURVE; THENCE CONTINUE WESTERLY ALONG SAID NORTH RIGHT OF WAY LINE AND SAID CURVE, HAVING A RADIUS OF 1,167.71 FEET, THROUGH A CENTRAL ANGLE OF 11°05'17" FOR AN ARC LENGTH OF 225.98 FEET, SAID CURVE IS SUBTENDED BY A CHORD OF 225.62 FEET THAT BEARS S68°06'21"W; THENCE CONTINUE ALONG SAID NORTH RIGHT OF WAY LINE S62°33'39"W, A DISTANCE OF 2,777.02 FEET TO THE WEST LINE OF SAID SECTION 14; THENCE ALONG SAID WEST LINE NORTH 01°50'18" EAST, A DISTANCE OF 171.34 FEET; THENCE NORTH 89°47'23" WEST, A DISTANCE OF 52.02 FEET TO THE EAST RIGHT-OF-WAY LINE OF U.S. HIGHWAY NUMBER 1; THENCE NORTH 14°53'10" WEST ALONG SAID WEST RIGHT-OF-WAY LINE, A DISTANCE OF 590.45 FEET; THENCE SOUTH 89°58'36" EAST, A DISTANCE OF 222.03 FEET BACK TO THE WEST LINE OF SAID SECTION 14; THENCE NORTH 01°50'18" EAST ALONG SAID WEST LINE, A DISTANCE OF 700.00 FEET TO THE NORTHWEST CORNER OF THE SOUTHWEST QUARTER OF SAID SECTION 14; THENCE NORTH 00°10'19" EAST ALONG SAID WEST LINE, A DISTANCE OF 2,651.67 FEET TO THE POINT OF BEGINNING.

CONTAINING 13,880,438.1 SQUARE FEET OR 318.65 ACRES, MORE OR LESS; AND

PARCEL 2

BEING A PART OF SECTION 14, TOWNSHIP 32 SOUTH, RANGE 39 EAST, INDIAN RIVER COUNTY, FLORIDA, BEING MORE FULLY DESCRIBED AS FOLLOWS:

COMMENCING AT THE NORTHWEST CORNER OF SAID SECTION 14; THENCE S88°52'01"E ALONG THE NORTH LINE OF SAID SECTION 14, A DISTANCE OF 2,629.50 FEET TO THE SOUTHEAST CORNER OF THE SOUTHWEST 1/4 OF SAID SECTION 11, THE SAME BEING THE NORTHWEST CORNER OF AN EASEMENT AS DESCRIBED IN OFFICIAL RECORD BOOK 2136, PAGE 445, AND THE POINT OF BEGINNING; THENCE ALONG SAID EASEMENT THE FOLLOWING; THENCE S10°28'56"W A DISTANCE OF 40.54 FEET; THENCE S01°08'10"W A DISTANCE OF

39.46 FEET TO A POINT OF CURVATURE OF A CIRCULAR CURVE; THENCE SOUTHEASTERLY ALONG SAID CURVE, HAVING A RADIUS OF 287.32 FEET, THROUGH A CENTRAL ANGLE OF 49°14'10" FOR AN ARC LENGTH OF 246.91 FEET TO A POINT OF REVERSE CURVATURE OF A CIRCULAR CURVE; THENCE SOUTHEASTERLY ALONG SAID CURVE, HAVING A RADIUS OF 214.00 FEET, THROUGH A CENTRAL ANGLE OF 23°15'41", FOR AN ARC LENGTH OF 86.88 FEET; THENCE S24°50'20"E A DISTANCE OF 63.89 FEET; THENCE S06°13'27"E A DISTANCE OF 161.22 FEET; THENCE S28°35'36"E A DISTANCE OF 251.50 FEET TO A POINT OF CURVATURE OF A CIRCULAR CURVE; THENCE SOUTHEASTERLY ALONG SAID CURVE HAVING A RADIUS OF 946.00 FEET, THROUGH A CENTRAL ANGLE OF 8°21'19", FOR AN ARC LENGTH OF 137.95 FEET; THENCE S36°56'55"E A DISTANCE OF 433.61 FEET; THENCE S39°04'20"E A DISTANCE OF 103.98 FEET TO A POINT OF CURVATURE OF A CIRCULAR CURVE; THENCE SOUTHEASTERLY ALONG SAID CURVE, HAVING A RADIUS OF 214.00 FEET, THROUGH A CENTRAL ANGLE OF 59°46'12" FOR AN ARC LENGTH OF 223.24 FEET TO A POINT OF REVERSE CURVATURE OF A CIRCULAR CURVE; THENCE SOUTHEASTERLY ALONG SAID CURVE, HAVING A RADIUS OF 186.00 FEET, THROUGH A CENTRAL ANGLE OF 82°45'44", FOR AN ARC LENGTH OF 268.67 FEET TO A POINT OF REVERSE CURVATURE OF A CIRCULAR CURVE; THENCE SOUTHEASTERLY ALONG SAID CURVE, HAVING A RADIUS OF 504.00 FEET, THROUGH A CENTRAL ANGLE OF 18°29'01", FOR AN ARC LENGTH OF 162.59 FEET; THENCE S43°34'50"E A DISTANCE OF 89.68 FEET; THENCE LEAVING SAID EASEMENT LINE, N63°47'18"E, A DISTANCE OF 148.61 FEET; THENCE N64°56'00"E, A DISTANCE OF 54.82 FEET; THENCE N67°17'12"E, A DISTANCE OF 64.33 FEET; THENCE N60°34'42"E, A DISTANCE OF 77.19 FEET; THENCE N58°52'09"E, A DISTANCE OF 72.27 FEET; THENCE N62°29'59"E, A DISTANCE OF 91.32 FEET; THENCE N60°35'17"E, A DISTANCE OF 192.09 FEET; THENCE N60°41'47"E, A DISTANCE OF 148.98 FEET; THENCE N59°11'58"E, A DISTANCE OF 155.42 FEET; THENCE N60°34'57"E, A DISTANCE OF 195.45 FEET; THENCE N61°45'59"E, A DISTANCE OF 245.74 FEET; THENCE N59°14'52"E, A DISTANCE OF 92.90 FEET; THENCE N85°13'15"E, A DISTANCE OF 51.01 FEET; THENCE S06°46'41"W, A DISTANCE OF 20.48 FEET; THENCE S64°09'20"W, A DISTANCE OF 17.78 FEET; THENCE S68°48'10"W, A DISTANCE OF 83.66 FEET; THENCE S62°20'58"W, A DISTANCE OF 131.80 FEET; THENCE S62°25'23"W, A DISTANCE OF 183.61 FEET; THENCE S60°54'44"W, A DISTANCE OF 153.24 FEET; THENCE S61°55'23"W, A DISTANCE OF 62.15 FEET; THENCE S59°43'19"W, A DISTANCE OF 205.44 FEET; THENCE S60°03'43"W, A DISTANCE OF 174.83 FEET; THENCE S61°10'43"W, A DISTANCE OF 119.27 FEET; THENCE S60°38'34"W, A DISTANCE OF 76.26 FEET; THENCE S63°21'15"W, A DISTANCE OF 94.11 FEET; THENCE S66°02'58"W, A DISTANCE OF 100.98 FEET; THENCE S63°36'23"W, A DISTANCE OF 105.34 FEET; THENCE S42°23'34"E, A DISTANCE OF 16.86 FEET; THENCE S45°49'35"E, A DISTANCE OF 24.02 FEET; THENCE S67°42'39"E, A DISTANCE OF 38.12 FEET; THENCE S44°32'47"E, A DISTANCE OF 29.20 FEET; THENCE S46°44'04"E, A DISTANCE OF 26.70 FEET; THENCE S36°42'30"E, A DISTANCE OF 24.71 FEET; THENCE S26°12'44"E, A DISTANCE OF 41.18 FEET; THENCE S22°36'56"E, A DISTANCE OF 23.01 FEET; THENCE S20°51'26"E, A DISTANCE OF 40.27 FEET; THENCE S23°07'53"E, A DISTANCE OF 46.93 FEET; THENCE S24°21'06"E, A DISTANCE OF

51.43 FEET; THENCE S37°26'39"E, A DISTANCE OF 19.20 FEET; THENCE S44°12'16"E, A DISTANCE OF 20.37 FEET; THENCE S47°28'14"E, A DISTANCE OF 19.59 FEET; THENCE S45°31'50"E, A DISTANCE OF 20.72 FEET; THENCE S42°08'11"E, A DISTANCE OF 18.57 FEET; THENCE S38°26'20"E, A DISTANCE OF 13.72 FEET; THENCE S33°09'07"E, A DISTANCE OF 38.64 FEET; THENCE S18°54'57"E, A DISTANCE OF 22.82 FEET; THENCE S09°56'22"E, A DISTANCE OF 43.35 FEET; THENCE S08°23'47"E, A DISTANCE OF 74.82 FEET; THENCE S07°16'04"E, A DISTANCE OF 40.22 FEET; THENCE S04°21'51"E, A DISTANCE OF 46.40 FEET; THENCE S00°34'50"W, A DISTANCE OF 77.74 FEET TO THE NORTH RIGHT OF WAY LINE OF THE NORTH RELIEF CANAL AS SHOWN ON THE PLAT OF INDIAN RIVER FARMS COMPANY SUBDIVISION AS RECORDED IN PLAT BOOK 2 PAGE 25 PUBLIC RECORDS OF ST. LUCIE COUNTY, FLORIDA, NOW LYING AND BEING IN INDIAN RIVER COUNTY, FLORIDA; THENCE THE FOLLOWING CALLS ALONG SAID NORTH RIGHT OF WAY LINE; THENCE S89°25'10"E, A DISTANCE OF 214.86 FEET; THENCE N00°34'50"E, A DISTANCE OF 375.00 FEET; THENCE S89°25'10"E, A DISTANCE OF 991.68 FEET; THENCE N00°06'05"E, A DISTANCE OF 575.02 FEET TO THE MEAN HIGH WATER LINE OF THE INDIAN RIVER; THENCE THE FOLLOWING CALLS ALONG SAID MEAN HIGH WATER LINE; THENCE N29°46'16"W, A DISTANCE OF 25.63 FEET; THENCE N22°14'14"W, A DISTANCE OF 52.06 FEET; THENCE N16°59'39"W, A DISTANCE OF 54.33 FEET; THENCE N20°35'19"W, A DISTANCE OF 46.81 FEET; THENCE N14°26'10"W, A DISTANCE OF 48.96 FEET; THENCE N39°09'39"W, A DISTANCE OF 45.41 FEET; THENCE N18°41'53"W, A DISTANCE OF 61.23 FEET; THENCE N22°40'16"W, A DISTANCE OF 45.24 FEET; THENCE N33°34'03"W, A DISTANCE OF 43.02 FEET; THENCE N23°15'40"W, A DISTANCE OF 60.79 FEET; THENCE N11°08'39"W, A DISTANCE OF 44.56 FEET; THENCE N04°13'40"W, A DISTANCE OF 58.31 FEET; THENCE N61°18'26"W, A DISTANCE OF 40.24 FEET; THENCE N38°47'11"W, A DISTANCE OF 51.89 FEET; THENCE N03°07'12"W, A DISTANCE OF 46.34 FEET; THENCE N26°21'04"W, A DISTANCE OF 46.26 FEET; THENCE N07°09'46"E, A DISTANCE OF 56.01 FEET; THENCE N40°10'35"W, A DISTANCE OF 52.15 FEET; THENCE N43°51'24"W, A DISTANCE OF 46.83 FEET; THENCE N24°21'39"W, A DISTANCE OF 48.94 FEET; THENCE N32°27'36"W, A DISTANCE OF 44.87 FEET; THENCE N23°27'33"W, A DISTANCE OF 55.84 FEET; THENCE N18°04'16"W, A DISTANCE OF 50.32 FEET; THENCE N16°42'24"W, A DISTANCE OF 50.74 FEET; THENCE N07°52'20"W, A DISTANCE OF 41.47 FEET; THENCE N12°57'37"W, A DISTANCE OF 52.50 FEET; THENCE N45°01'55"W, A DISTANCE OF 38.11 FEET; THENCE N34°51'21"W, A DISTANCE OF 57.12 FEET; THENCE N18°53'55"W, A DISTANCE OF 39.54 FEET; THENCE N30°29'27"W, A DISTANCE OF 50.94 FEET; THENCE N33°05'24"W, A DISTANCE OF 57.01 FEET; THENCE N46°43'16"W, A DISTANCE OF 46.01 FEET; THENCE N31°04'34"W, A DISTANCE OF 50.22 FEET; THENCE N11°34'56"W, A DISTANCE OF 50.45 FEET; THENCE N26°46'56"W, A DISTANCE OF 52.56 FEET; THENCE N15°06'19"W, A DISTANCE OF 47.35 FEET; THENCE N46°59'45"W, A DISTANCE OF 50.46 FEET; THENCE N00°55'46"E, A DISTANCE OF 30.73 FEET; THENCE CONTINUE N00°55'46"E ALONG SAID LINE, A DISTANCE OF 21.73 FEET; THENCE N40°05'53"W, A DISTANCE OF 24.30 FEET TO AN INTERSECTION WITH THE NORTH LINE OF SAID SECTION 14; THENCE N88°51'50"W ALONG SAID NORTH LINE, A DISTANCE OF

ORDINANCE NO. 2019-_____

1,868.87 FEET TO THE POINT OF BEGINNING.
CONTAINING 4,110,385 SQUARE FEET OR 94.36 ACRES, MORE OR LESS.

is changed from RS-3, Residential Single-Family (up to 3 units/acre) and CON-2, Estuarine wetlands conservation district, to PD, Planned Development, with the general project layout as depicted in the attached conceptual PD plan (Exhibit A). The uses allowed shall be limited to the residential and accessory uses allowed in the RS-3 and CON-2 Districts as listed in the use tables in Sections 911.08 and 911.12 (respectively), and multi-family residential development shall also be allowed as a permitted use within the project.

All with the meaning and intent and as set forth and described in said Land Development Regulations. This ordinance shall become effective upon filing with the Department of State.

This ordinance was advertised in the Indian River Press Journal on the 6th day of January, 2019, for a public hearing to be held on the 22nd day of January, 2019, at which time it was moved for adoption by Commissioner _____, seconded by Commissioner _____, and adopted by the following vote:

Chairman Bob Solari	_____
Vice Chairman Susan Adams	_____
Commissioner Joseph E. Flesher	_____
Commissioner Tim Zorc	_____
Commissioner Peter D. O'Bryan	_____

BOARD OF COUNTY COMMISSIONERS
OF INDIAN RIVER COUNTY

BY: _____
Bob Solari, Chairman

ATTEST: Jeffrey R. Smith, Clerk of Court and Comptroller

BY: _____
Deputy Clerk

This ordinance was filed with the Department of State on the following date: _____

APPROVED AS TO FORM AND LEGAL SUFFICIENCY

Dylan Reingold, County Attorney

APPROVED AS TO PLANNING MATTERS

Stan Boling, AICP; Community Development Director

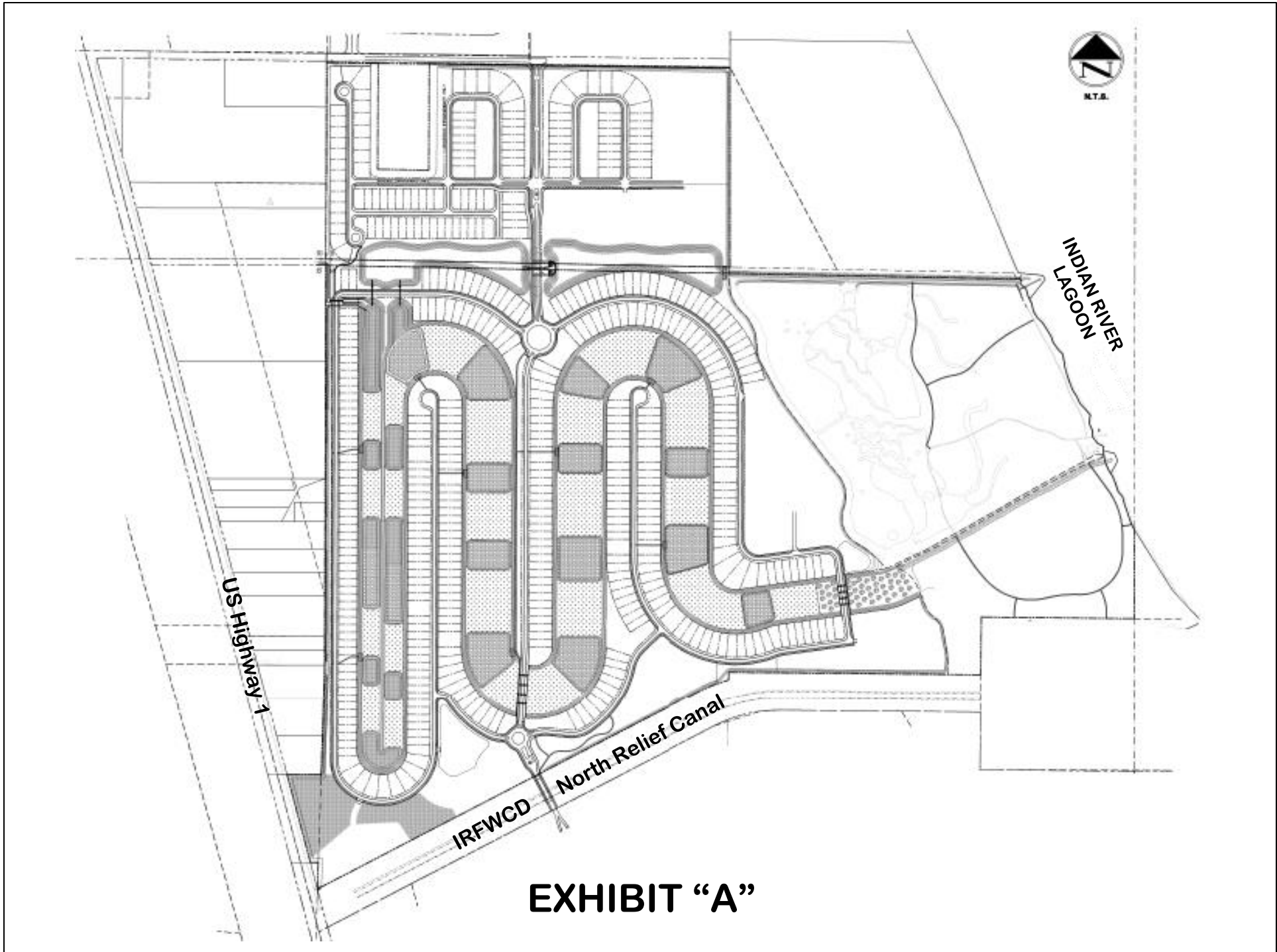


EXHIBIT "A"