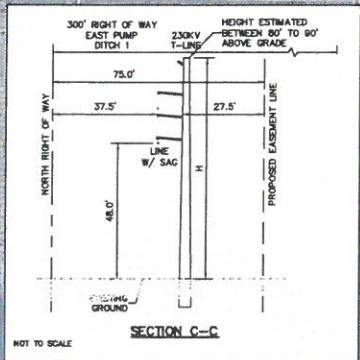
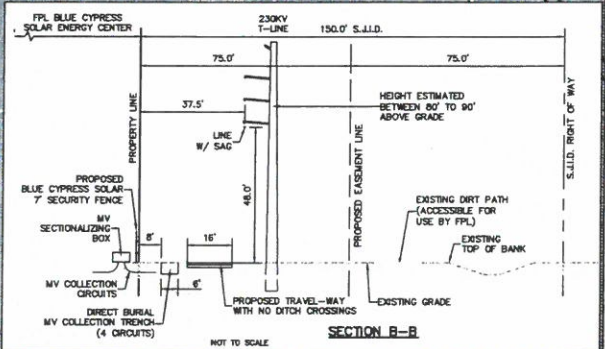
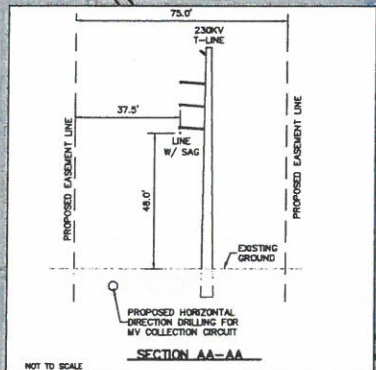
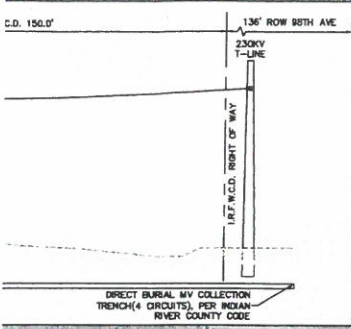
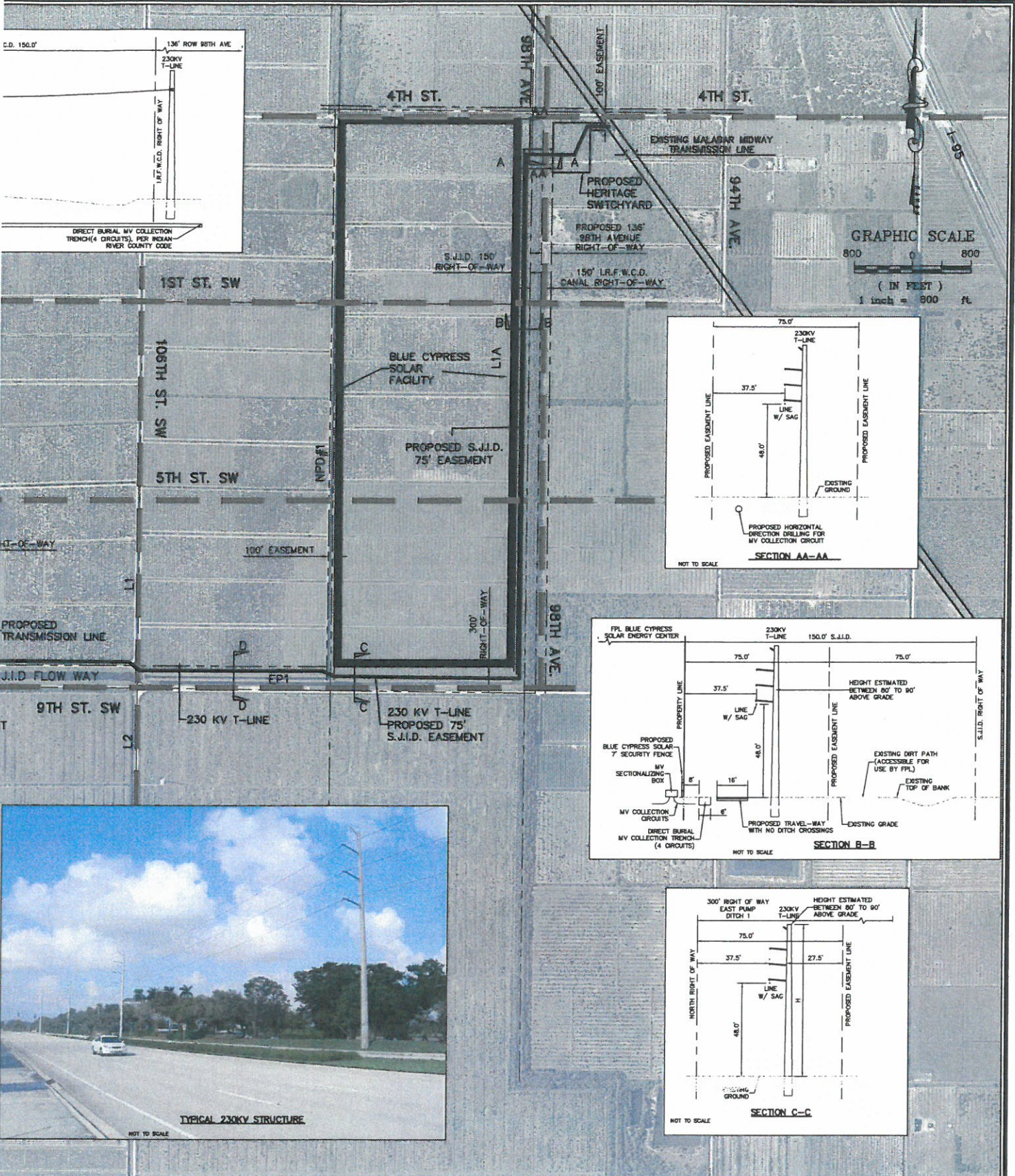


P:\Proj-2016\16-198 T Line\Eng\16-198 Eldora Exhibit W ROAD\2016.dwg, 2/7/2017 2:51:08 PM

COMPUTER FILE REF.	FIELD BK./PG.

CULPEPPER & TERPENI
 CONSULTING ENGINEERS | LAND

2980 SOUTH 25th STREET • FORT PIERCE, FLORIDA
 151 SW FLAGLER AVENUE • STUART, FLORIDA
 PHONE: 772-464-3337 • FAX: 772-464-9407 • www.cet.com
 STATE OF FLORIDA CERTIFICATION No. LC 426



JAMES P. TERPENING JR, P.E. FL. REG. NO. 24276

- REVISIONS -		BY	DATE

	BY	DATE
DESIGNED	JPT	02-01-17
CALCS.	-	-
DRAWN	ER	02-06-17
DETAILED	-	-
CHECKED	-	-
APPROVED	-	-

FLORIDA POWER & LIGHT COMPANY

ELDORA TRANSMISSION LINE

DATE: 02/06/2017
 HORIZ. SCALE: 1"=800'
 VERT. SCALE: -
 JOB No. 16-196
 SHEET **1 of 1**