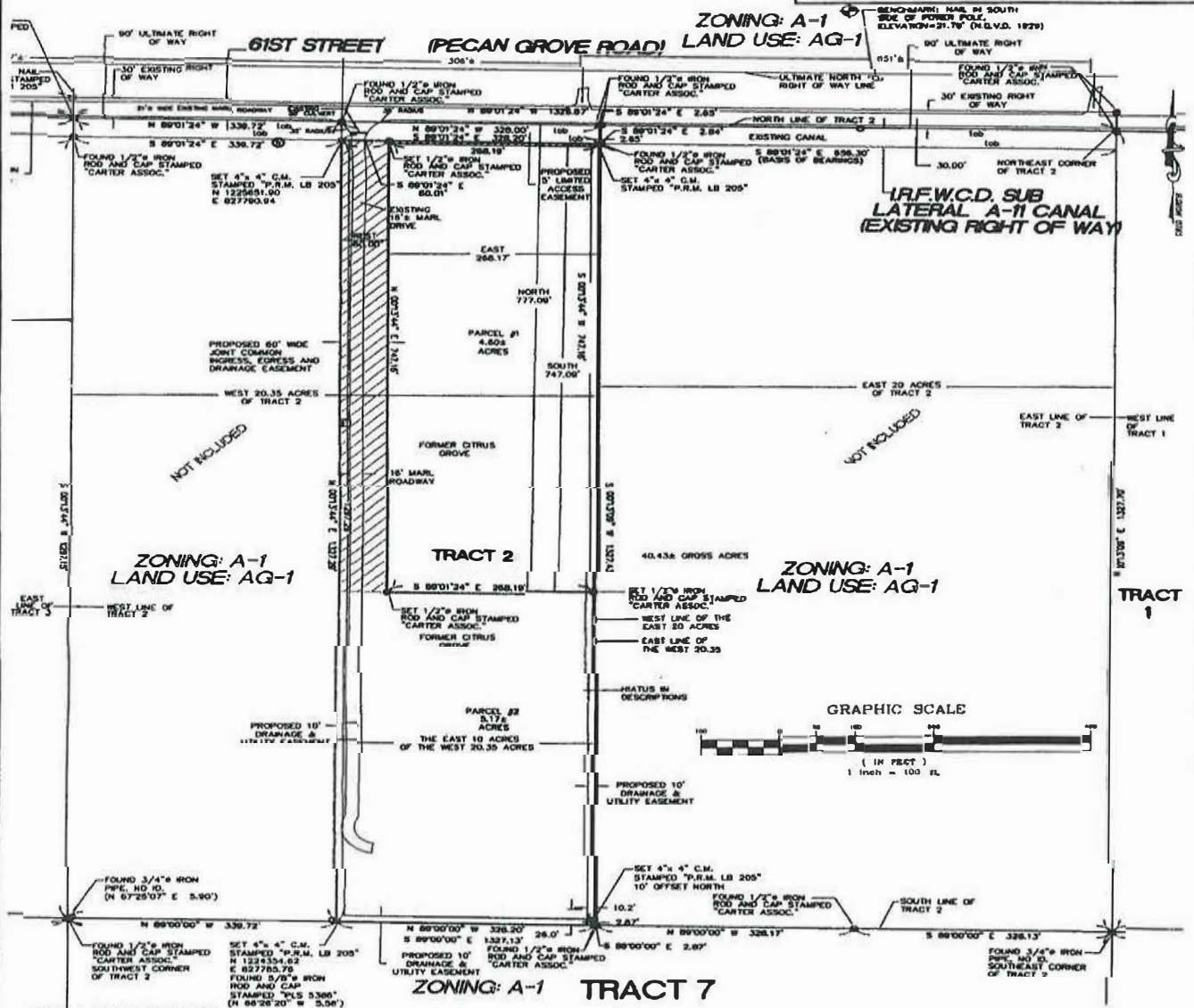
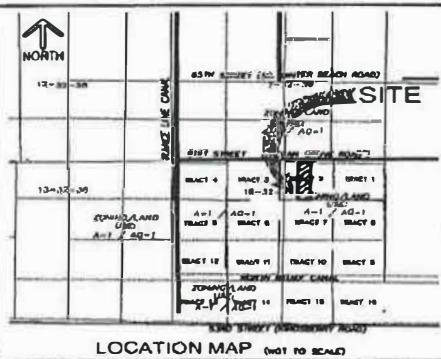


"STILLWATER" AFFIDAVIT OF EXEMPTION EXHIBIT

TRACT 2, SECTION 18, TOWNSHIP 32 SOUTH, RANGE 39 EAST
INDIAN RIVER COUNTY, FLORIDA

FOR
**L. MICHAEL STUDBILL JR.,
SANDRA L. STUDBILL
AND
JOYCE DARLENE HAMILTON**



LEGEND/ABBREVIATIONS:
 DWG.# = DRAWING NUMBER
 F.A.C. = FLORIDA ADMINISTRATIVE CODE
 Ø = DIAMETER
 NO. = NUMBER
 CONC. = CONCRETE
 (TYP) = TYPICAL
 ID. = IDENTIFICATION
 F.E.M.A. = FEDERAL EMERGENCY MANAGEMENT AGENCY
 F.I.R.M. = FLOOD INSURANCE RATE MAP
 (P) = PLAT DATA
 (O) = OBSERVED DATA
 'C.D.' = WOOD UTILITY POLE
 TOB = TOP OF BANK
 E.O.P. = EDGE OF PAVEMENT
 C/L = CENTERLINE
 I.R.F.W.C.D. = INDIAN RIVER FARMS WATER CONTROL DISTRICT
 --- = DENOTES PROPOSED INGRESS, EGRESS AND DRAINAGE EASEMENT
 (WF) = EXISTING FLOW WELL

SEE DOCUMENT SPECIFIC NOTES
ON SHEET 1 OF 7

CARTER ASSOCIATES, INC.
 CONSULTING ENGINEERS AND LAND SURVEYORS
 1708 21ST STREET 772-662-4191 (PHONE)
 VERO BEACH, FLORIDA 39920-7475 772-662-7180 (FAX)

**AFFIDAVIT OF EXEMPTION
 PORTION OF SECTION 18,
 TOWNSHIP 32 S., RANGE 39 E.
 INDIAN RIVER COUNTY, FL**

PG. NO. 55	F.B. NO. 648	DATE 8/15/04	DWG BY F.A.L.	APP'D BY D.E.L.	H. SCALE GRAPH	V. SCALE N/A	PRDJ. NO. 04-502	SHEET 3 OF 7 DWG# 17411-A
---------------	-----------------	-----------------	------------------	--------------------	-------------------	-----------------	---------------------	------------------------------