

# PRESERVE AT WATERWAY VILLAGE PD - POD V

A SUBDIVISION OF A PORTION OF SECTION 15, TOWNSHIP 32 SOUTH, RANGE 39 EAST AND A PORTION OF SECTION 22, TOWNSHIP 32 SOUTH, RANGE 39 EAST, INDIAN RIVER COUNTY, FLORIDA

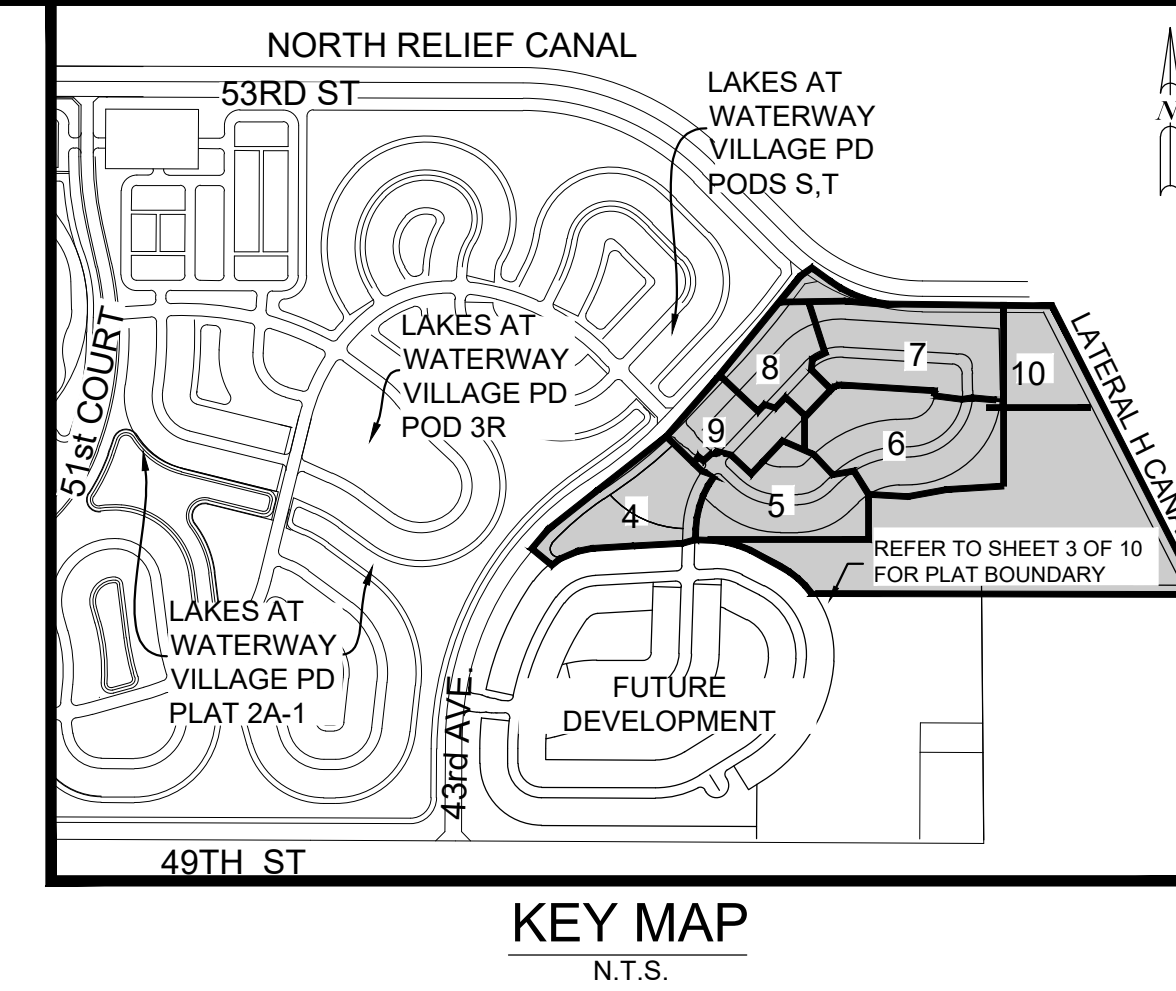
## LEGEND OF SYMBOLS

	PLAT BOUNDARY
	PARCEL LINE
	DRAINAGE EASEMENT LINE
	EASEMENT LINE
	ROAD CENTER LINE
	SECTION LINE
	MATCH LINE
	LOT NUMBER
	PRM, 4x4 CMD, IRC OR NAIL & DISK STAMPED "PRM KHA LB 696" OR AS NOTED
	PCP, NAIL AND DISC STAMPED "PCP KHA LB 696"
	LOT CORNER - 5/8" IRC STAMPED "KHA LB696"

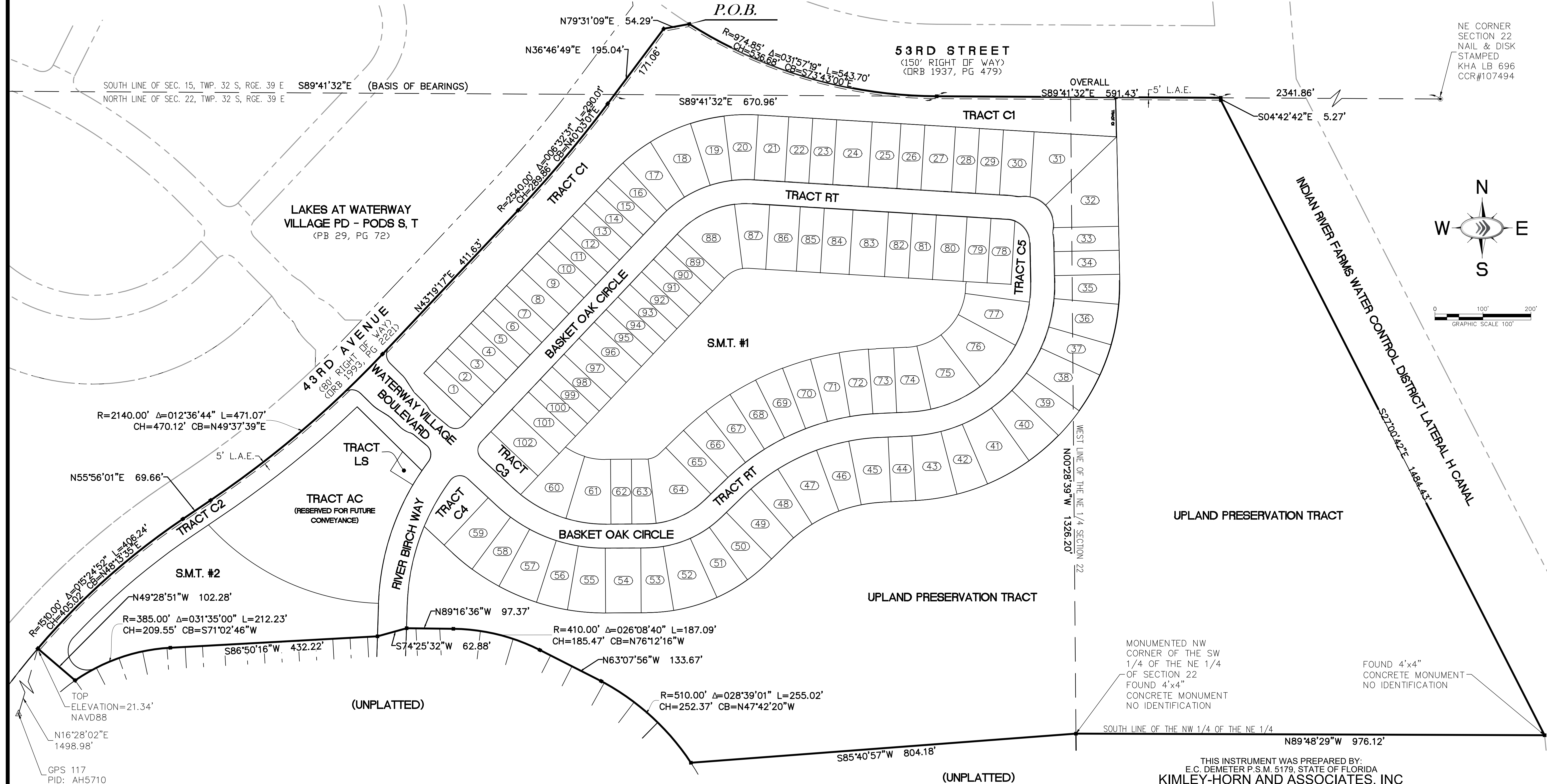
Δ	DELTA (CENTRAL ANGLE)
CB	CHORD BEARING
CCR	CERTIFIED CORNER RECORD
CD	CHORD DISTANCE
CMD	CONCRETE MONUMENT AND DISK
D.E.	DRAINAGE EASEMENT
L	ARC LENGTH
L.A.E.	LIMITED ACCESS EASEMENT
LB	LICENSED BUSINESS
N.R.	NON-RADIAL
ORB	OFFICIAL RECORDS BOOK
PB	PLAT BOOK
PCP	PERMANENT CONTROL POINT
PG	PAGE
PC	POINT OF CURVATURE
PI	POINT OF INTERSECTION

## ABBREVIATIONS

PT	POINT OF TANGENT
P.O.B.	POINT OF BEGINNING
PRM	PERMANENT REFERENCE MONUMENT
R	RADIUS
RAD	RADIAL
RGE	RANGE
R/W	RIGHT-OF-WAY
SEC	SECTION
TWP	TOWNSHIP
IRC	IRON ROD WITH CAP
EL.=	ELEVATION
NAVD 88'	NORTH AMERICAN VERTICAL DATUM OF 1988
U.E.	UTILITY EASEMENT
W.S.E.	WATER AND SEWER EASEMENT



PLAT BOOK \_\_\_\_\_  
 PAGE \_\_\_\_\_  
 CFN \_\_\_\_\_  
 CLERK'S FILE NUMBER \_\_\_\_\_



MONUMENTED NW CORNER OF THE SW 1/4 OF THE NE 1/4 OF SECTION 22 FOUND 4"x4" CONCRETE MONUMENT NO IDENTIFICATION

FOUND 4"x4" CONCRETE MONUMENT NO IDENTIFICATION

THIS INSTRUMENT WAS PREPARED BY:  
 E.C. DEMETER P.S.M. 5179, STATE OF FLORIDA  
**KIMLEY-HORN AND ASSOCIATES, INC**  
 445 24TH STREET, SUITE 200  
 VERO BEACH, FLORIDA 32960  
 LB 696  
 ON MAY 3, 2021

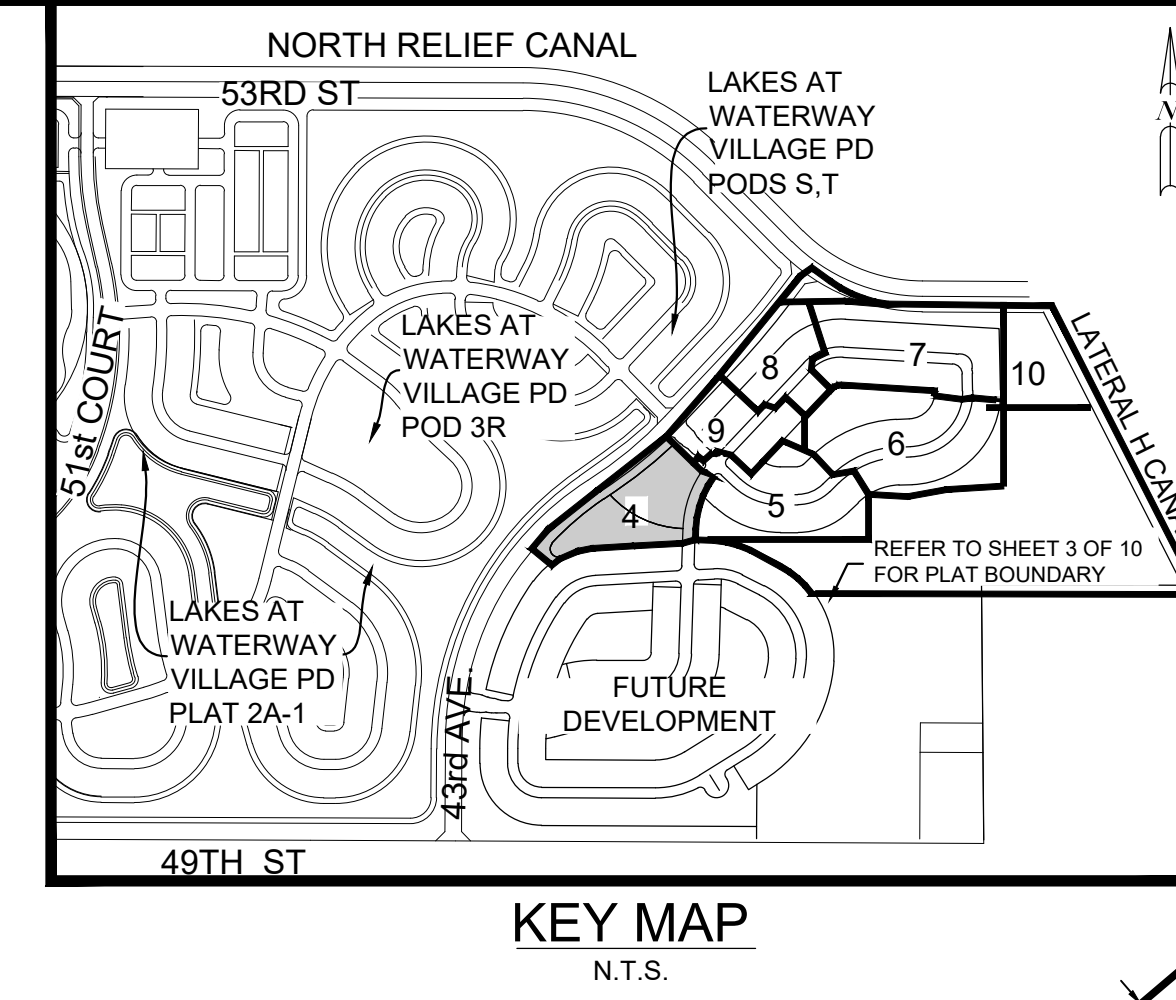
# PRESERVE AT WATERWAY VILLAGE PD - POD V

A SUBDIVISION OF A PORTION OF SECTION 15, TOWNSHIP 32 SOUTH, RANGE 39 EAST AND A PORTION OF SECTION 22, TOWNSHIP 32 SOUTH, RANGE 39 EAST, INDIAN RIVER COUNTY, FLORIDA

## LEGEND OF SYMBOLS

	PLAT BOUNDARY
	PARCEL LINE
	DRAINAGE EASEMENT LINE
	EASEMENT LINE
	ROAD CENTER LINE
	SECTION LINE
	MATCH LINE
	LOT NUMBER
	PRM, 4x4 CMD, IRC OR NAIL & DISK STAMPED "PRM KHA LB 696" OR AS NOTED
	PCP, NAIL AND DISC STAMPED "PCP KHA LB 696"
	LOT CORNER - 5/8" IRC STAMPED "KHA LB696"

ABBREVIATIONS	
Δ	DELTA (CENTRAL ANGLE)
CB	CHORD BEARING
CCR	CERTIFIED CORNER RECORD
CD	CHORD DISTANCE
CMD	CONCRETE MONUMENT AND DISK
D.E.	DRAINAGE EASEMENT
L	ARC LENGTH
L.A.E.	LIMITED ACCESS EASEMENT
LB	LICENSED BUSINESS
N.R.	NON-RADIAL
ORB	OFFICIAL RECORDS BOOK
PB	PLAT BOOK
PCP	PERMANENT CONTROL POINT
PG	PAGE
PC	POINT OF CURVATURE
PI	POINT OF INTERSECTION
PT	POINT OF TANGENT
P.O.B.	POINT OF BEGINNING
PRM	PERMANENT REFERENCE MONUMENT
R	RADIUS
RAD	RADIAL
RGE	RANGE
R/W	RIGHT-OF-WAY
SEC	SECTION
TWP	TOWNSHIP
IRC	IRON ROD WITH CAP
EL.=	ELEVATION
NAVD 88'	NORTH AMERICAN VERTICAL DATUM OF 1988
U.E.	UTILITY EASEMENT
W.S.E.	WATER AND SEWER EASEMENT

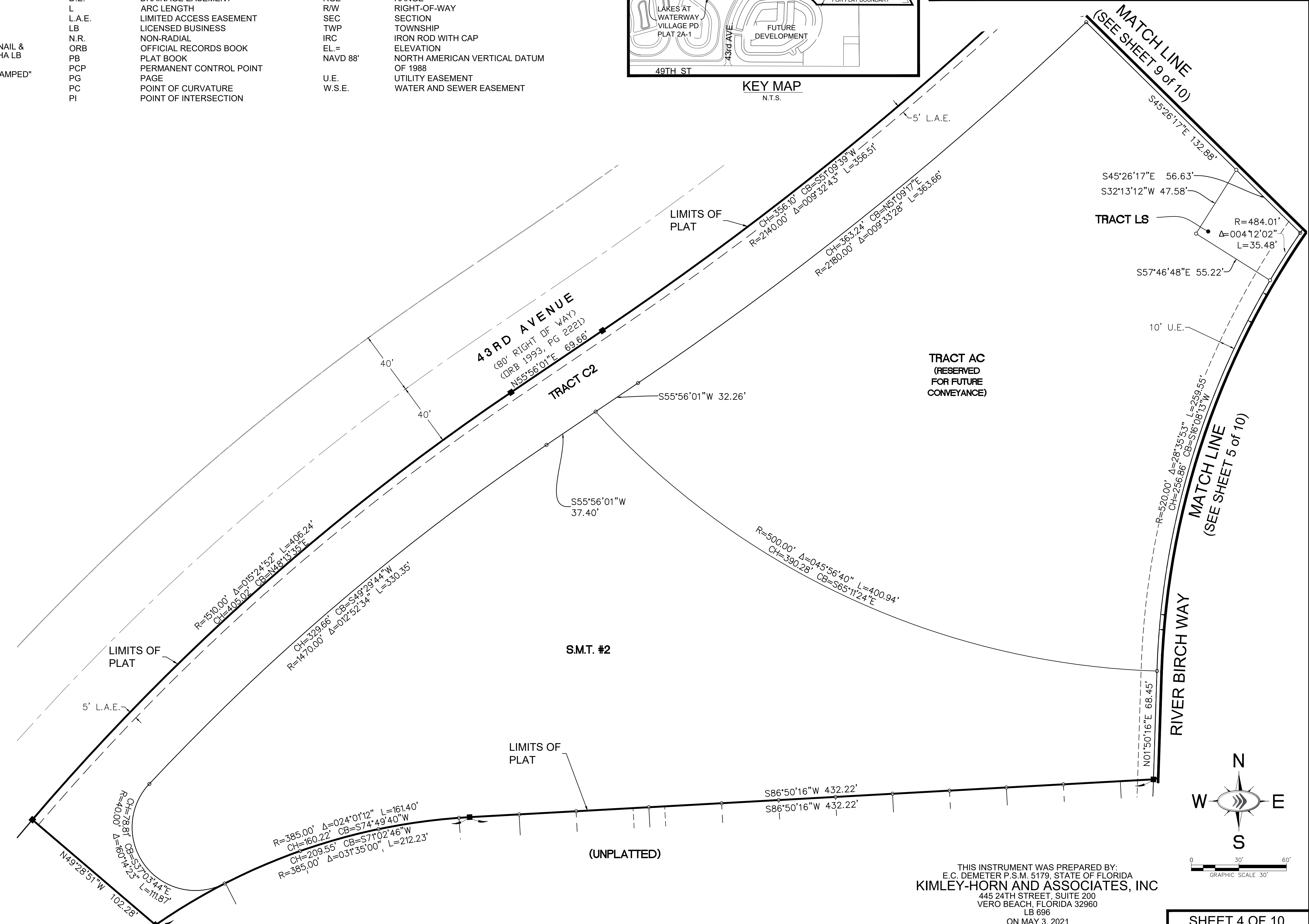


PLAT BOOK \_\_\_\_\_

PAGE \_\_\_\_\_

CFN \_\_\_\_\_

CLERK'S FILE NUMBER \_\_\_\_\_



THIS INSTRUMENT WAS PREPARED BY:  
E.C. DEMETER P.S.M. 5179, STATE OF FLORIDA  
**KIMLEY-HORN AND ASSOCIATES, INC**  
445 24TH STREET, SUITE 200  
VERO BEACH, FLORIDA 32960  
LB 696  
ON MAY 3, 2021

# PRESERVE AT WATERWAY VILLAGE PD - POD V

A SUBDIVISION OF A PORTION OF SECTION 15, TOWNSHIP 32 SOUTH, RANGE 39 EAST AND A PORTION OF SECTION 22, TOWNSHIP 32 SOUTH, RANGE 39 EAST, INDIAN RIVER COUNTY, FLORIDA

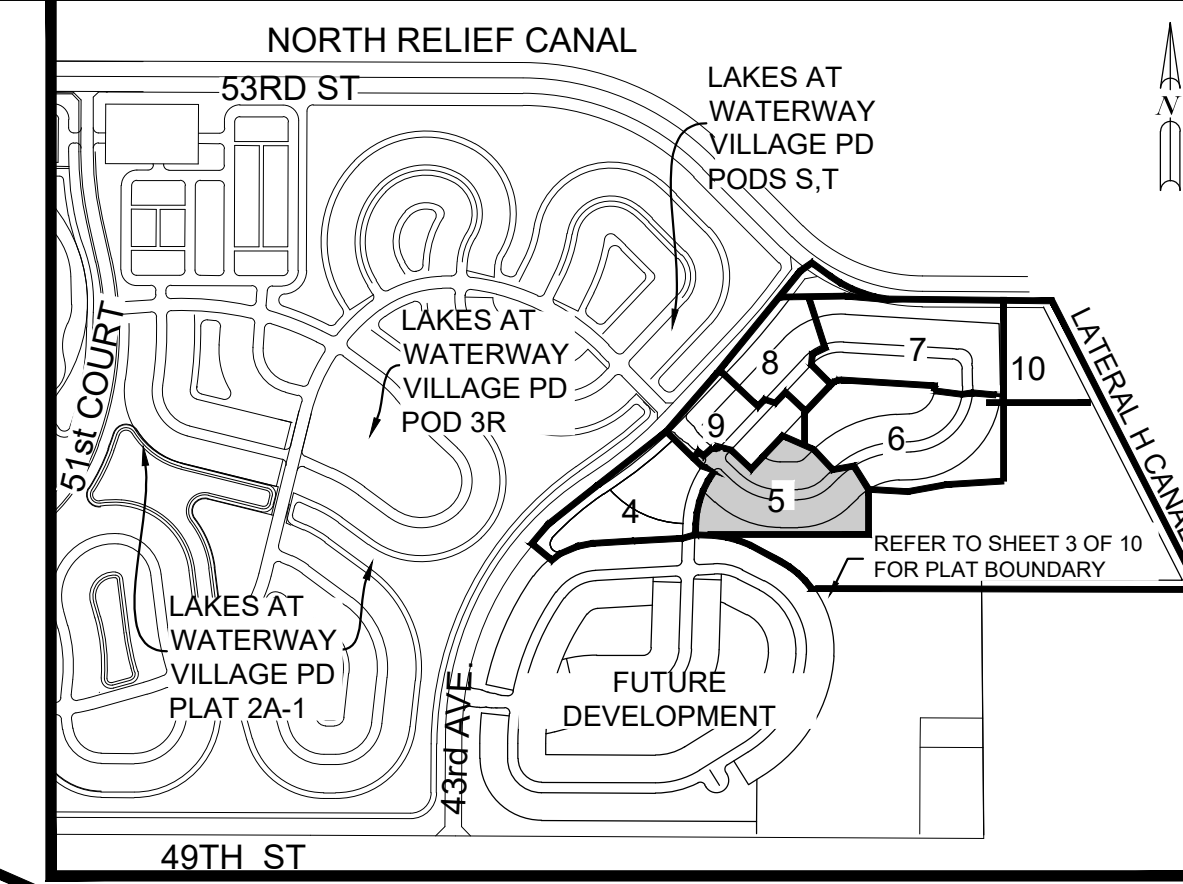
## LEGEND OF SYMBOLS

- PLAT BOUNDARY
- PARCEL LINE
- - - DRAINAGE EASEMENT LINE
- - - EASEMENT LINE
- ROAD CENTER LINE
- SECTION LINE
- MATCH LINE
- ## LOT NUMBER
- PRM, 4x4 CMD, IRC OR NAIL & DISK STAMPED "PRM KHA LB 696" OR AS NOTED
- PCP, NAIL AND DISC STAMPED "PCP KHA LB 696"
- LOT CORNER - 5/8" IRC STAMPED "KHA LB696"

- Δ DELTA (CENTRAL ANGLE)
- CB CHORD BEARING
- CCR CERTIFIED CORNER RECORD
- CD CHORD DISTANCE
- CMD CONCRETE MONUMENT AND DISK
- D.E. DRAINAGE EASEMENT
- L ARC LENGTH
- L.A.E. LIMITED ACCESS EASEMENT
- LB LICENSED BUSINESS
- N.R. NON-RADIAL
- ORB OFFICIAL RECORDS BOOK
- PB PLAT BOOK
- PCP PERMANENT CONTROL POINT
- PG PAGE
- PC POINT OF CURVATURE
- PI POINT OF INTERSECTION

## ABBREVIATIONS

- PT POINT OF TANGENT
- P.O.B. POINT OF BEGINNING
- PRM PERMANENT REFERENCE MONUMENT
- R RADIUS
- RAD RADIAL
- RGE RANGE
- R/W RIGHT-OF-WAY
- SEC SECTION
- TWP TOWNSHIP
- IRON ROD WITH CAP
- ELEVATION
- OF 1988
- U.E. UTILITY EASEMENT
- W.S.E. WATER AND SEWER EASEMENT



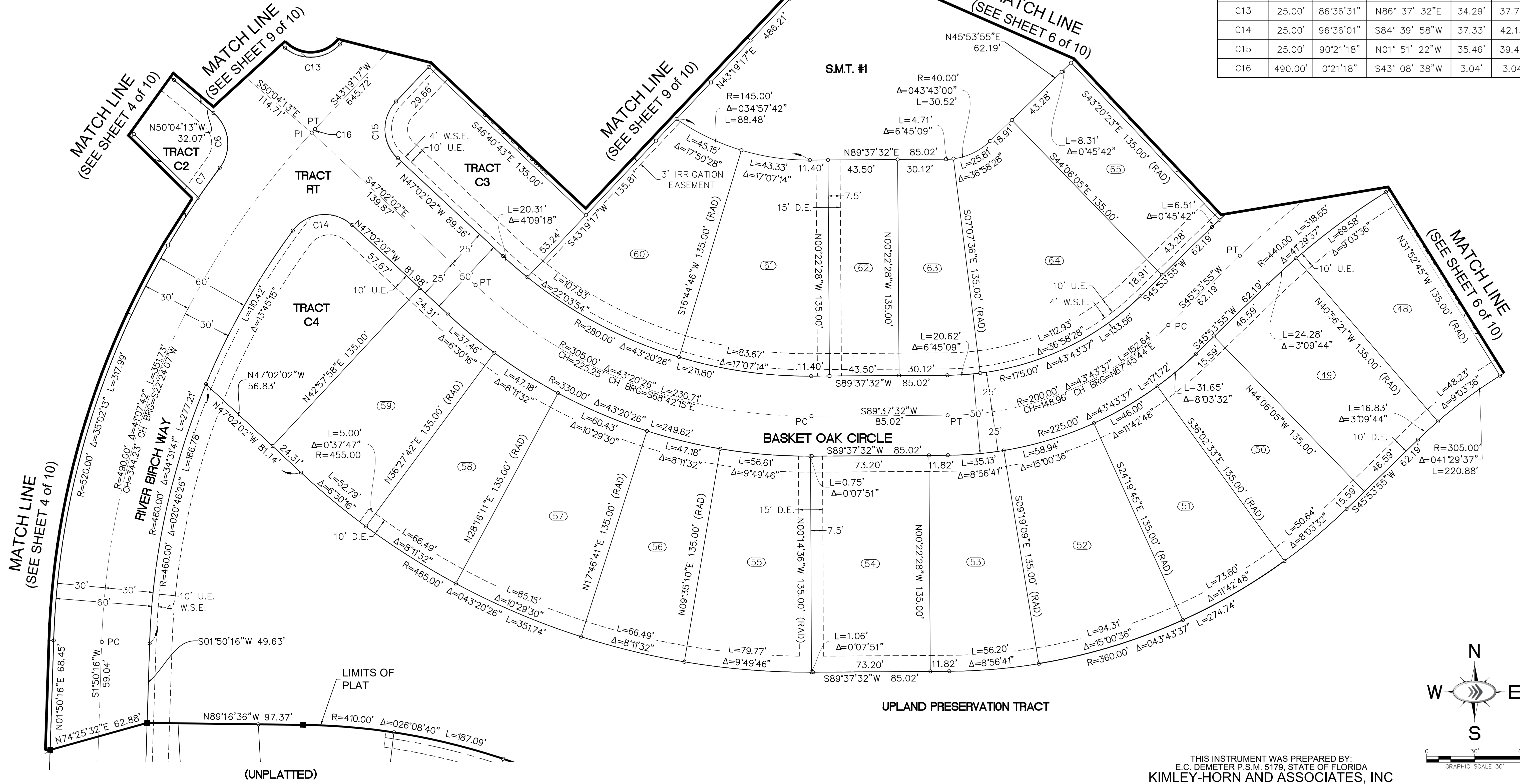
PLAT BOOK \_\_\_\_\_

PAGE \_\_\_\_\_

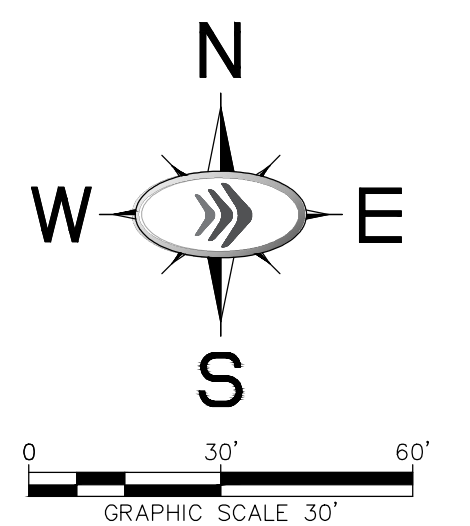
CFN \_\_\_\_\_

CLERK'S FILE NUMBER \_\_\_\_\_

CURVE TABLE					
CURVE #	RADIUS	DELTA	CHORD BEARING	CHORD	LENGTH
C6	25.00'	86°56'42"	N06° 35' 51"W	34.40'	37.94'
C7	520.00'	2°31'48"	N35° 36' 36"E	22.96'	22.96'
C13	25.00'	86°36'31"	N86° 37' 32"E	34.29'	37.79'
C14	25.00'	96°36'01"	S84° 39' 58"W	37.33'	42.15'
C15	25.00'	90°21'18"	N01° 51' 22"W	35.46'	39.42'
C16	490.00'	0°21'18"	S43° 08' 38"W	3.04'	3.04'



THIS INSTRUMENT WAS PREPARED BY:  
E.C. DEMETER P.S.M. 5179, STATE OF FLORIDA  
KIMLEY-HORN AND ASSOCIATES, INC  
445 24TH STREET, SUITE 200  
VERO BEACH, FLORIDA 32960  
LB 696  
ON MAY 3, 2021



# PRESERVE AT WATERWAY VILLAGE PD - POD V

A SUBDIVISION OF A PORTION OF SECTION 15, TOWNSHIP 32 SOUTH, RANGE 39 EAST AND A PORTION OF SECTION 22, TOWNSHIP 32 SOUTH, RANGE 39 EAST, INDIAN RIVER COUNTY, FLORIDA

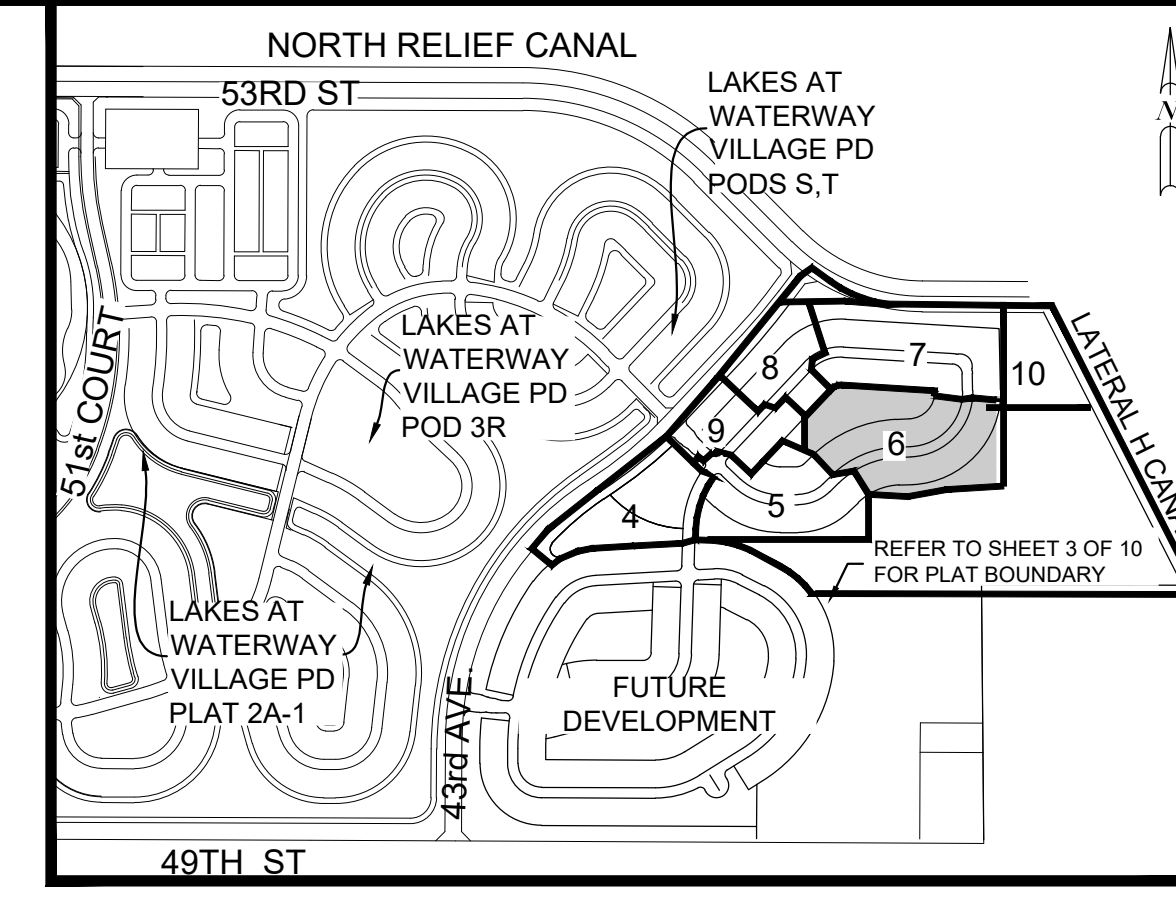
## LEGEND OF SYMBOLS

- PLAT BOUNDARY
- PARCEL LINE
- - - DRAINAGE EASEMENT LINE
- - - EASEMENT LINE
- ROAD CENTER LINE
- SECTION LINE
- MATCH LINE
- ## LOT NUMBER
- PRM, 4x4 CMD, IRC OR NAIL & DISK STAMPED "PRM KHA LB 696" OR AS NOTED
- PCP, NAIL AND DISC STAMPED "PCP KHA LB 696"
- LOT CORNER - 5/8" IRC STAMPED "KHA LB696"

- Δ DELTA (CENTRAL ANGLE)
- CB CHORD BEARING
- CCR CERTIFIED CORNER RECORD
- CD CHORD DISTANCE
- CMD CONCRETE MONUMENT AND DISK
- D.E. DRAINAGE EASEMENT
- L ARC LENGTH
- L.A.E. LIMITED ACCESS EASEMENT
- LB LICENSED BUSINESS
- N.R. NON-RADIAL
- ORB OFFICIAL RECORDS BOOK
- PB PLAT BOOK
- PCP PERMANENT CONTROL POINT
- PG PAGE
- PC POINT OF CURVATURE
- PI POINT OF INTERSECTION

## ABBREVIATIONS

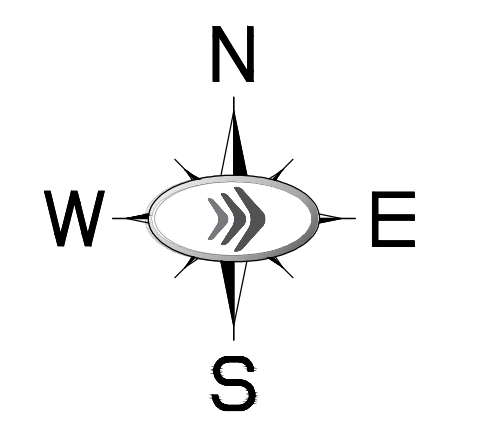
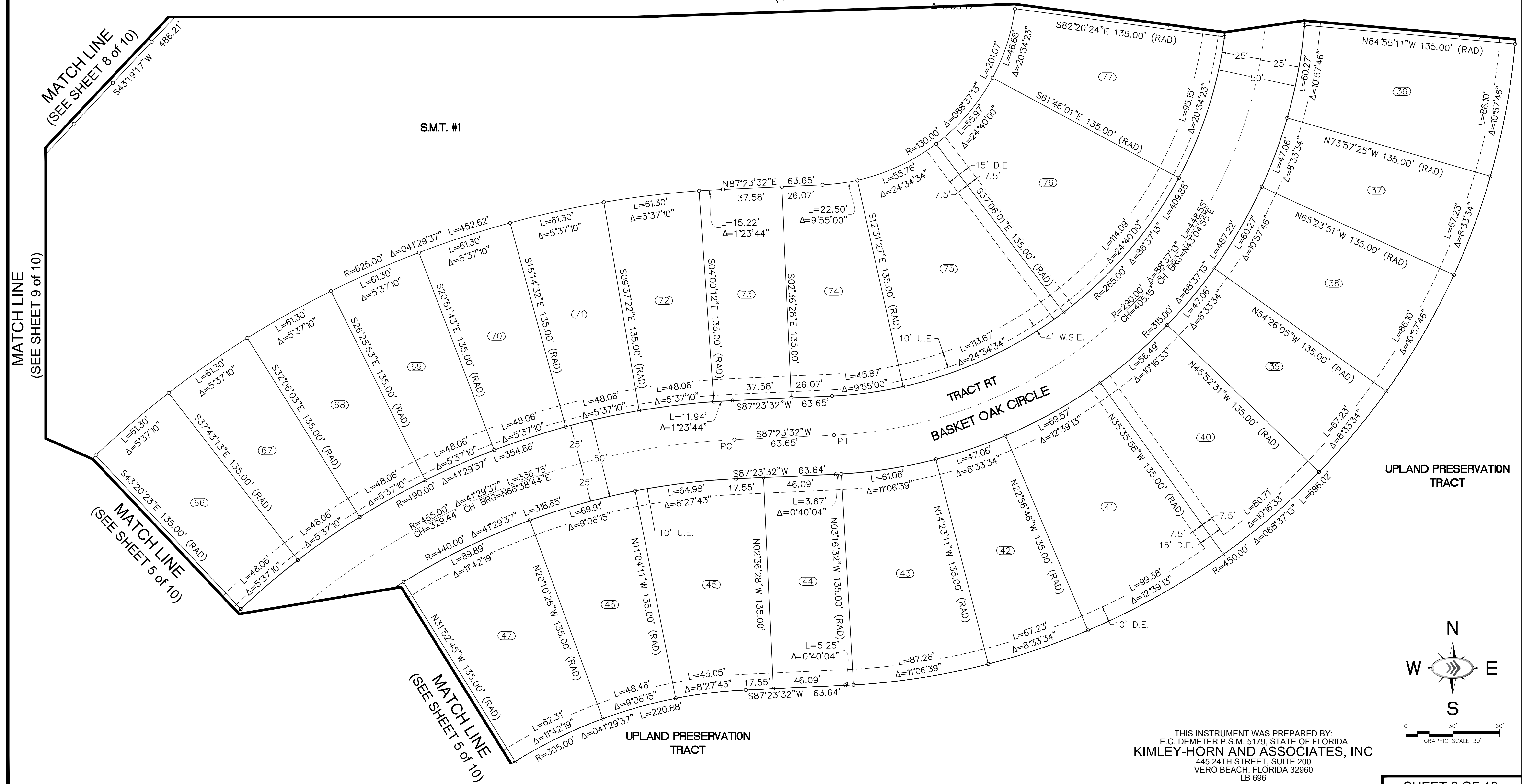
- PT POINT OF TANGENT
- P.O.B. POINT OF BEGINNING
- PRM PERMANENT REFERENCE MONUMENT
- R RADIUS
- RAD RADIAL
- RGE RANGE
- R/W RIGHT-OF-WAY
- SEC SECTION
- TWP TOWNSHIP
- IRON ROD WITH CAP
- ELEVATION
- NAV 88 NORTH AMERICAN VERTICAL DATUM OF 1988
- U.E. UTILITY EASEMENT
- W.S.E. WATER AND SEWER EASEMENT



KEY MAP  
N.T.S.

PLAT BOOK \_\_\_\_\_  
PAGE \_\_\_\_\_  
CFN \_\_\_\_\_  
CLERK'S FILE NUMBER \_\_\_\_\_

MATCH LINE  
(SEE SHEET 7 of 10)



0 30' 60'  
GRAPHIC SCALE 30'

THIS INSTRUMENT WAS PREPARED BY:  
E.C. DEMETER P.S.M. 5179, STATE OF FLORIDA  
KIMLEY-HORN AND ASSOCIATES, INC  
445 24TH STREET, SUITE 200  
VERO BEACH, FLORIDA 32960  
LB 696  
ON MAY 3, 2021

# PRESERVE AT WATERWAY VILLAGE PD - POD V

A SUBDIVISION OF A PORTION OF SECTION 15, TOWNSHIP 32 SOUTH, RANGE 39 EAST AND A PORTION OF SECTION 22, TOWNSHIP 32 SOUTH, RANGE 39 EAST, INDIAN RIVER COUNTY, FLORIDA

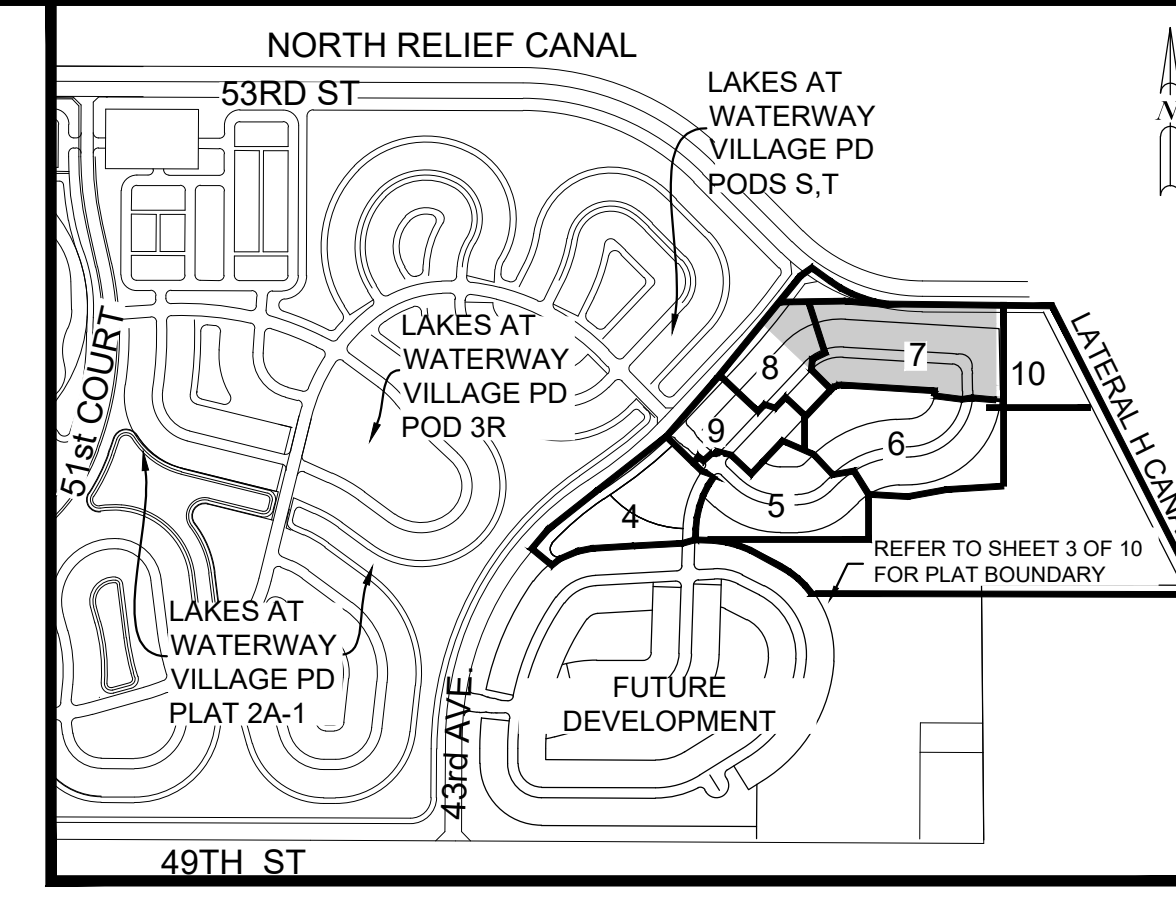
## LEGEND OF SYMBOLS

- PLAT BOUNDARY
- PARCEL LINE
- DRAINAGE EASEMENT LINE
- EASEMENT LINE
- ROAD CENTER LINE
- SECTION LINE
- MATCH LINE
- LOT NUMBER
- PRM, 4x4 CMD, IRC OR NAIL & DISK STAMPED "PRM KHA LB 696" OR AS NOTED
- PCP, NAIL AND DISC STAMPED "PCP KHA LB 696"
- LOT CORNER - 5/8" IRC STAMPED "KHA LB696"

- Δ DELTA (CENTRAL ANGLE)
- CB CHORD BEARING
- CCR CERTIFIED CORNER RECORD
- CD CHORD DISTANCE
- CMD CONCRETE MONUMENT AND DISK
- D.E. DRAINAGE EASEMENT
- L ARC LENGTH
- L.A.E. LIMITED ACCESS EASEMENT
- LB LICENSED BUSINESS
- N.R. NON-RADIAL
- ORB OFFICIAL RECORDS BOOK
- PB PLAT BOOK
- PCP PERMANENT CONTROL POINT
- PG PAGE
- PC POINT OF CURVATURE
- PI POINT OF INTERSECTION

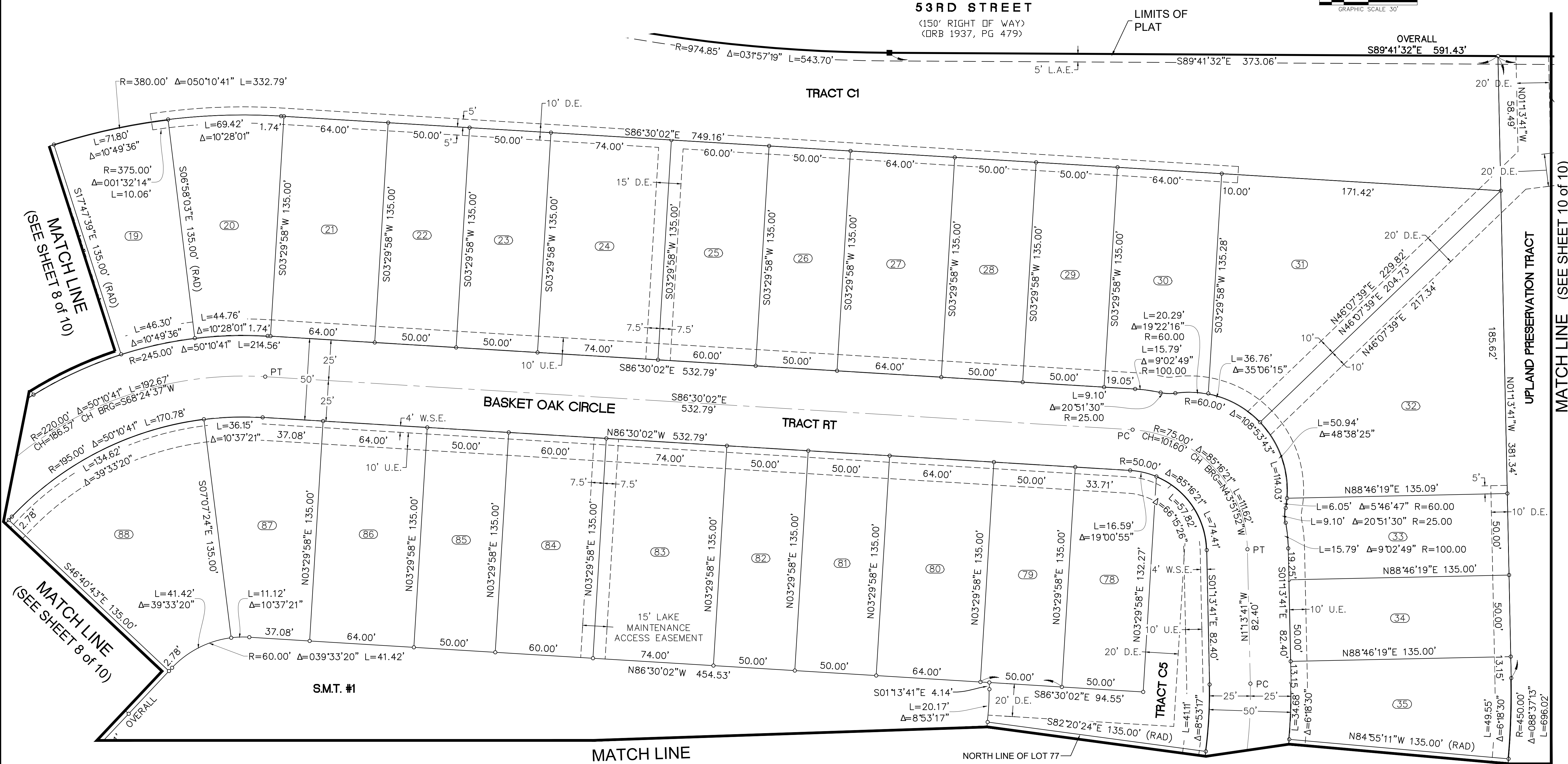
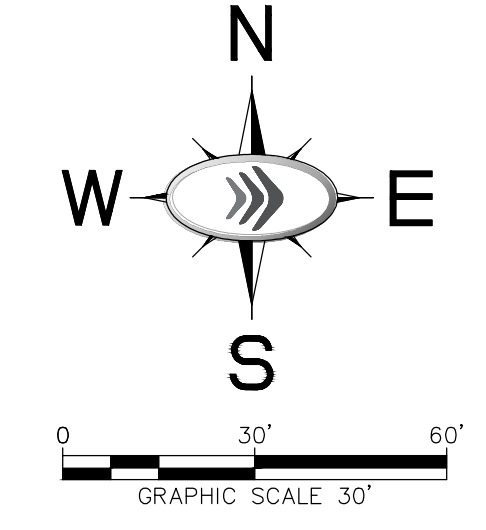
## ABBREVIATIONS

- PT POINT OF TANGENT
- P.O.B. POINT OF BEGINNING
- PRM PERMANENT REFERENCE MONUMENT
- R RADIUS
- RAD RADIAL
- RGE RANGE
- R/W RIGHT-OF-WAY
- SEC SECTION
- TWP TOWNSHIP
- IRON ROD WITH CAP
- ELEVATION
- NAV 88 NORTH AMERICAN VERTICAL DATUM OF 1988
- U.E. UTILITY EASEMENT
- W.S.E. WATER AND SEWER EASEMENT



KEY MAP  
N.T.S.

PLAT BOOK \_\_\_\_\_  
PAGE \_\_\_\_\_  
CFN \_\_\_\_\_  
CLERK'S FILE NUMBER \_\_\_\_\_



MATCH LINE  
(SEE SHEET 6 of 10)

THIS INSTRUMENT WAS PREPARED BY:  
E.C. DEMETER P.S.M. 5179, STATE OF FLORIDA  
KIMLEY-HORN AND ASSOCIATES, INC  
445 24TH STREET, SUITE 200  
VERO BEACH, FLORIDA 32960  
LB 696  
ON MAY 3, 2021

# PRESERVE AT WATERWAY VILLAGE PD - POD V

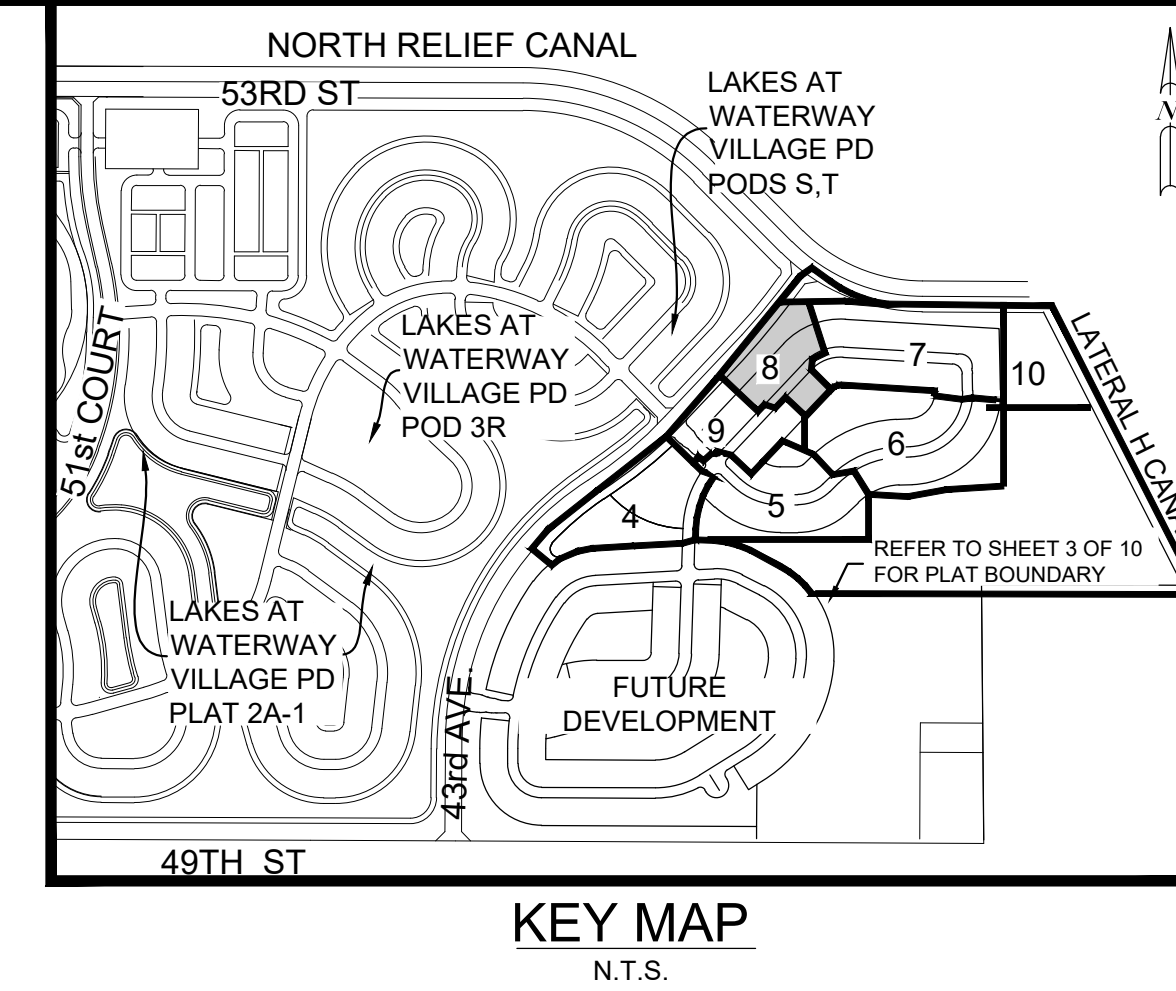
A SUBDIVISION OF A PORTION OF SECTION 15, TOWNSHIP 32 SOUTH, RANGE 39 EAST AND A PORTION OF SECTION 22, TOWNSHIP 32 SOUTH, RANGE 39 EAST, INDIAN RIVER COUNTY, FLORIDA

## LEGEND OF SYMBOLS

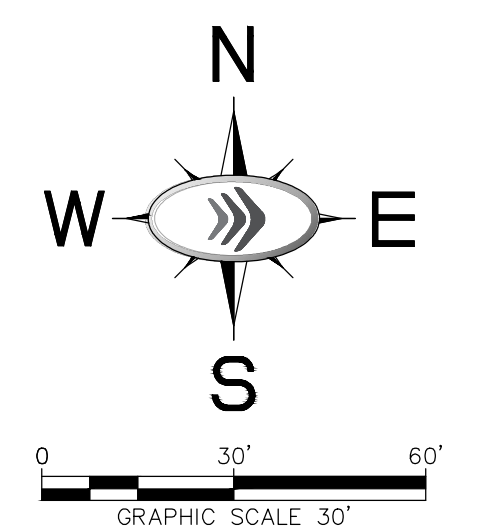
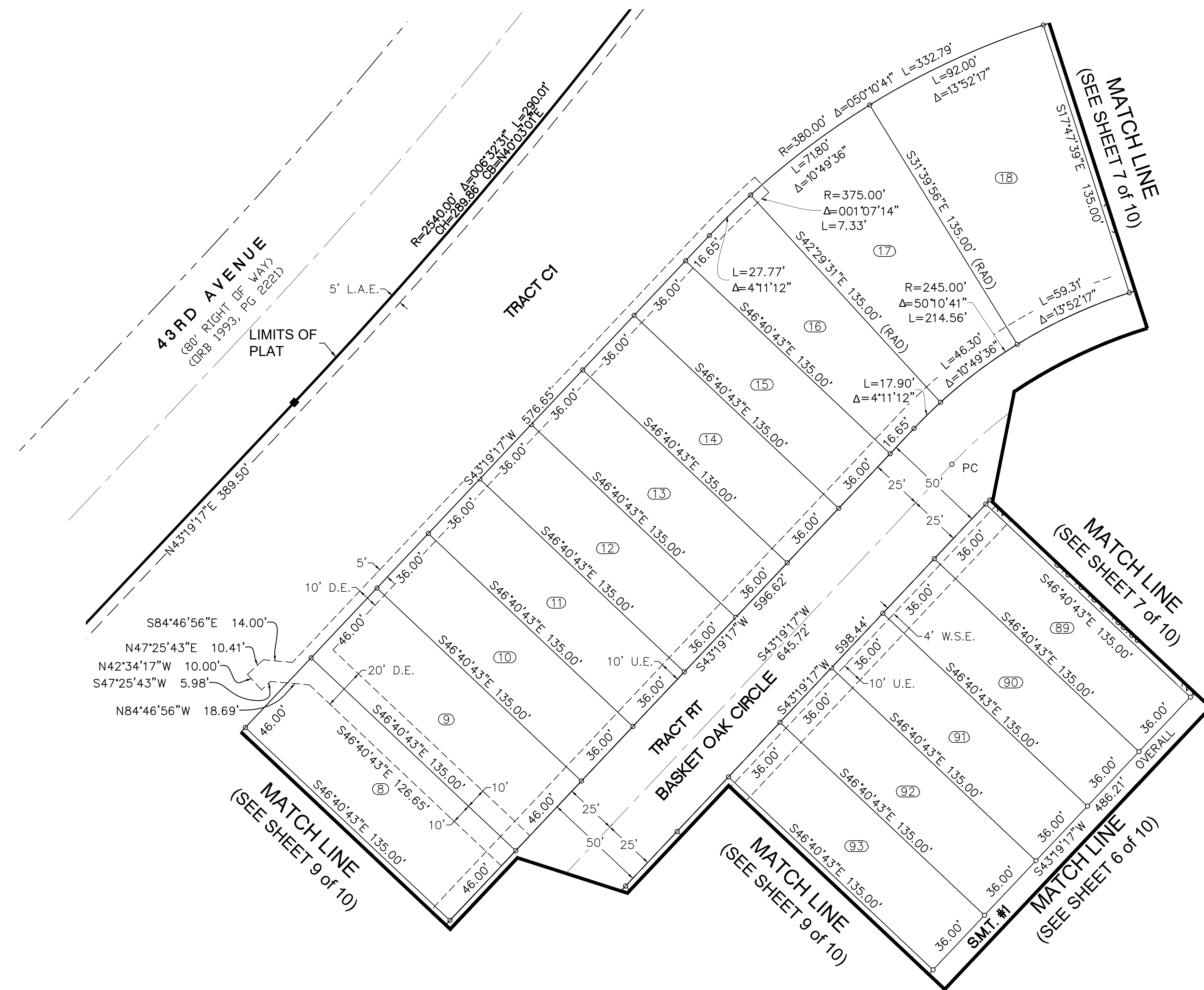
—	PLAT BOUNDARY
—	PARCEL LINE
- - - -	DRAINAGE EASEMENT LINE
- - - -	EASEMENT LINE
—	ROAD CENTER LINE
—	SECTION LINE
—	MATCH LINE
##	LOT NUMBER
■	PRM, 4x4 CMD, IRC OR NAIL & DISK STAMPED "PRM KHA LB 696" OR AS NOTED
●	PCP, NAIL AND DISC STAMPED "PCP KHA LB 696"
○	LOT CORNER - 5/8" IRC STAMPED "KHA LB696"

## ABBREVIATIONS

Δ	DELTA (CENTRAL ANGLE)	PT	POINT OF TANGENT
CB	CHORD BEARING	P.O.B.	POINT OF BEGINNING
CCR	CERTIFIED CORNER RECORD	PRM	PERMANENT REFERENCE MONUMENT
CD	CHORD DISTANCE	R	RADIUS
CMD	CONCRETE MONUMENT AND DISK	RAD	RADIAL
D.E.	DRAINAGE EASEMENT	RGE	RANGE
L	ARC LENGTH	R/W	RIGHT-OF-WAY
L.A.E.	LIMITED ACCESS EASEMENT	SEC	SECTION
LB	LICENSED BUSINESS	TWP	TOWNSHIP
N.R.	NON-RADIAL	IRC	IRON ROD WITH CAP
ORB	OFFICIAL RECORDS BOOK	EL.=	ELEVATION
PB	PLAT BOOK	NAVD 88'	NORTH AMERICAN VERTICAL DATUM OF 1988
PCP	PERMANENT CONTROL POINT	U.E.	UTILITY EASEMENT
PG	PAGE	W.S.E.	WATER AND SEWER EASEMENT
PC	POINT OF CURVATURE		
PI	POINT OF INTERSECTION		



PLAT BOOK \_\_\_\_\_  
 PAGE \_\_\_\_\_  
 CFN \_\_\_\_\_  
 CLERK'S FILE NUMBER \_\_\_\_\_



THIS INSTRUMENT WAS PREPARED BY:  
 E.C. DEMETER P.S.M. 5179, STATE OF FLORIDA  
**KIMLEY-HORN AND ASSOCIATES, INC**  
 445 24TH STREET, SUITE 200  
 VERO BEACH, FLORIDA 32960  
 LB 696  
 ON MAY 3, 2021

# PRESERVE AT WATERWAY VILLAGE PD - POD V

A SUBDIVISION OF A PORTION OF SECTION 15, TOWNSHIP 32 SOUTH, RANGE 39 EAST AND A PORTION OF SECTION 22, TOWNSHIP 32 SOUTH, RANGE 39 EAST, INDIAN RIVER COUNTY, FLORIDA

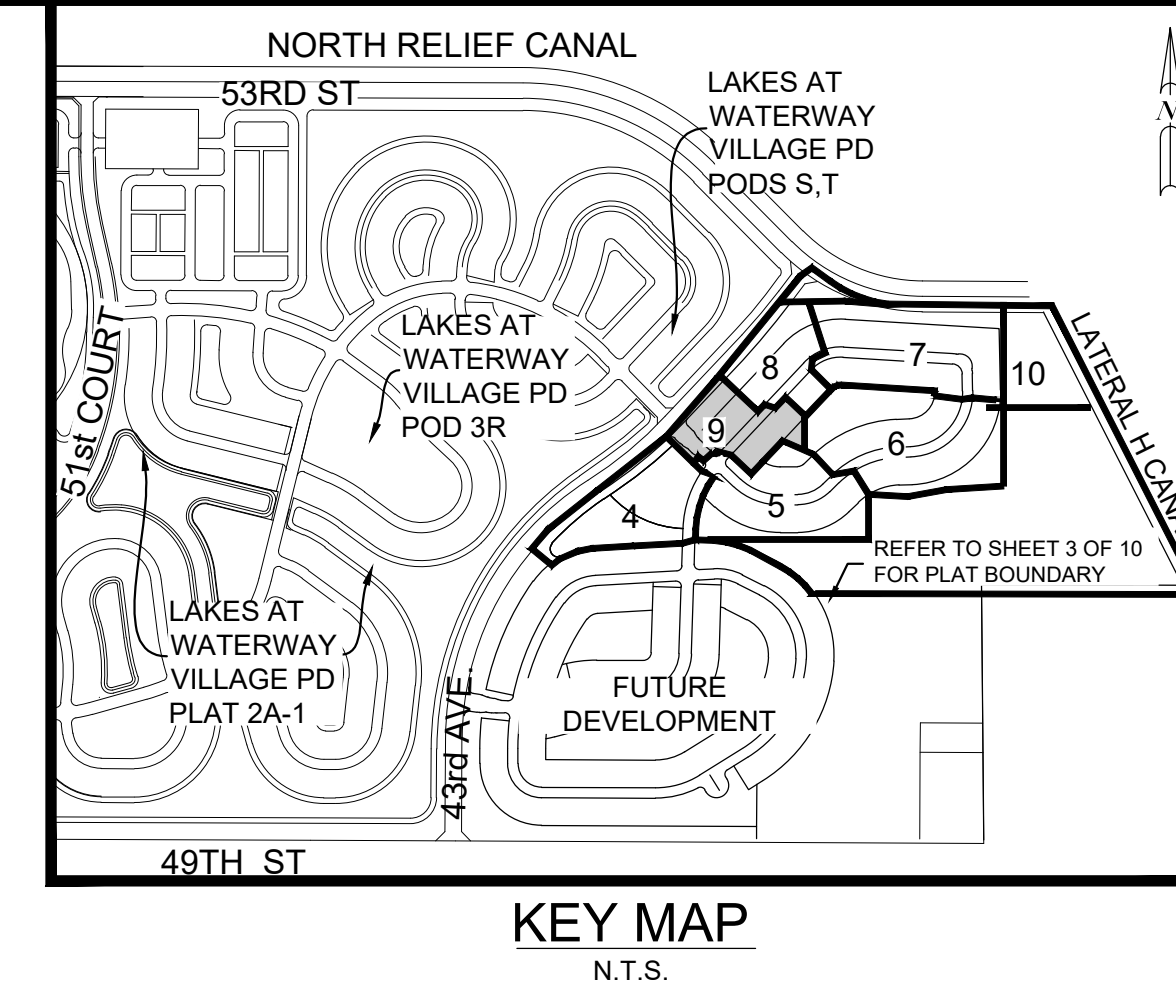
## LEGEND OF SYMBOLS

	PLAT BOUNDARY
	PARCEL LINE
	DRAINAGE EASEMENT LINE
	EASEMENT LINE
	ROAD CENTER LINE
	SECTION LINE
	MATCH LINE
	LOT NUMBER
	PRM. 4x4 CMD, IRC OR NAIL & DISK STAMPED "PRM KHA LB 696" OR AS NOTED
	PCP, NAIL AND DISC STAMPED "PCP KHA LB 696"
	LOT CORNER - 5/8" IRC STAMPED "KHA LB696"

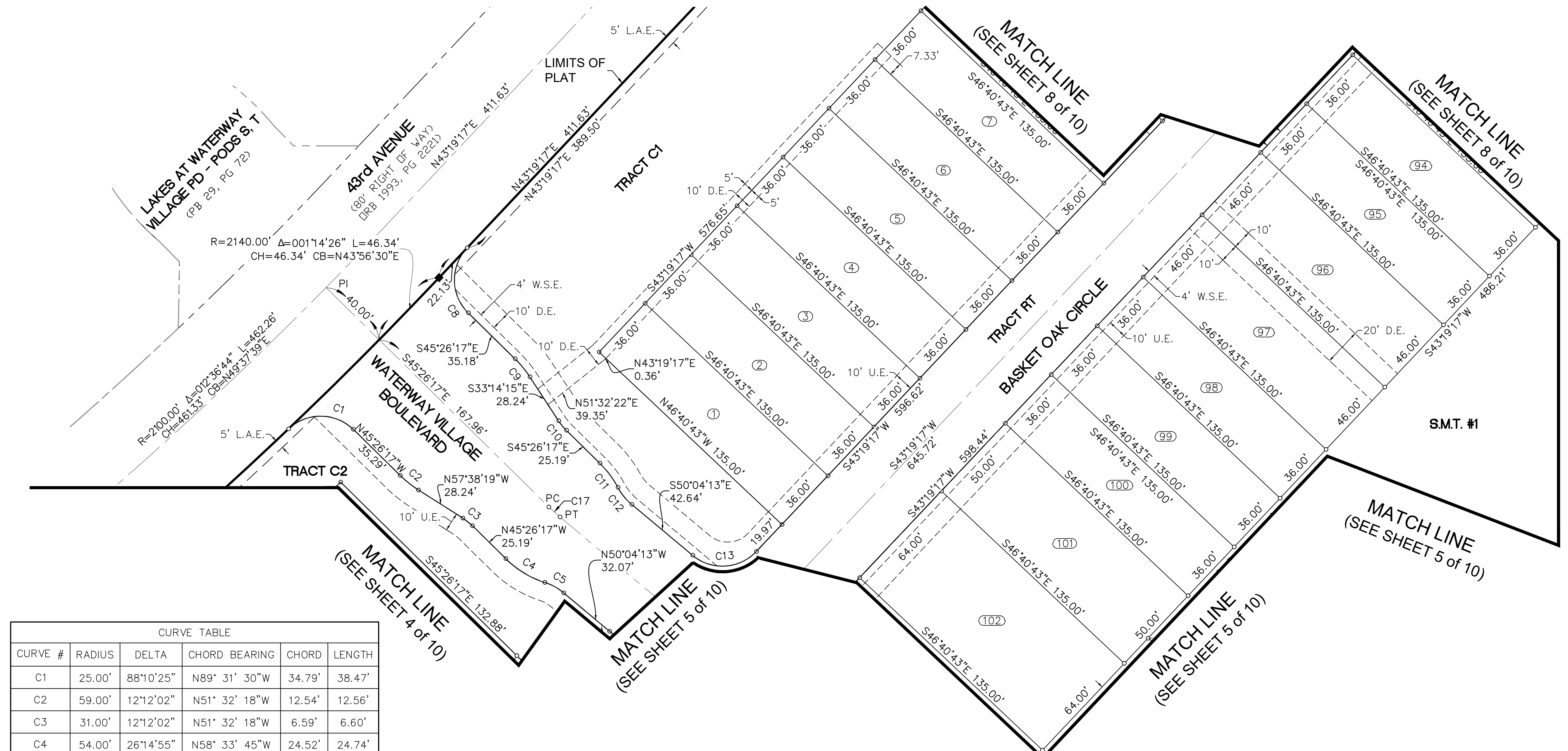
Δ	DELTA (CENTRAL ANGLE)
CB	CHORD BEARING
CCR	CERTIFIED CORNER RECORD
CD	CHORD DISTANCE
CMD	CONCRETE MONUMENT AND DISK
D.E.	DRAINAGE EASEMENT
L	ARC LENGTH
L.A.E.	LIMITED ACCESS EASEMENT
LB	LICENSED BUSINESS
N.R.	NON-RADIAL
ORB	OFFICIAL RECORDS BOOK
PB	PLAT BOOK
PCP	PERMANENT CONTROL POINT
PG	PAGE
PC	POINT OF CURVATURE
PI	POINT OF INTERSECTION

## ABBREVIATIONS

PT	POINT OF TANGENT
P.O.B.	POINT OF BEGINNING
PRM	PERMANENT REFERENCE MONUMENT
R	RADIUS
RAD	RADIAL
RGE	RANGE
R/W	RIGHT-OF-WAY
SEC	SECTION
TWP	TOWNSHIP
IRC	IRON ROD WITH CAP
EL.=	ELEVATION
NAV88	NORTH AMERICAN VERTICAL DATUM OF 1988
U.E.	UTILITY EASEMENT
W.S.E.	WATER AND SEWER EASEMENT

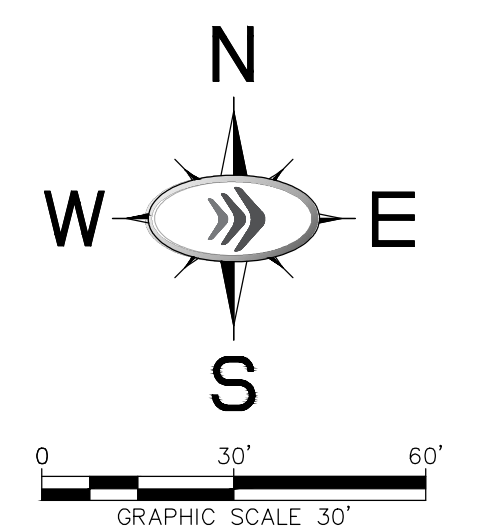


PLAT BOOK \_\_\_\_\_  
 PAGE \_\_\_\_\_  
 CFN \_\_\_\_\_  
 CLERK'S FILE NUMBER \_\_\_\_\_



CURVE TABLE					
CURVE #	RADIUS	DELTA	CHORD BEARING	CHORD	LENGTH
C1	25.00'	88°10'25"	N89° 31' 30"W	34.79'	38.47'
C2	59.00'	12°12'02"	N51° 32' 18"W	12.54'	12.56'
C3	31.00'	12°12'02"	N51° 32' 18"W	6.59'	6.60'
C4	54.00'	26°14'55"	N58° 33' 45"W	24.52'	24.74'
C5	31.00'	21°37'00"	N60° 52' 42"W	11.63'	11.70'
C8	25.00'	88°45'34"	S01° 03' 30"E	34.97'	38.73'
C9	59.00'	12°12'02"	S39° 20' 16"E	12.54'	12.56'
C10	31.00'	12°12'02"	S39° 20' 16"E	6.59'	6.60'
C11	54.00'	17°16'41"	S36° 47' 57"E	16.22'	16.28'
C12	31.00'	21°54'37"	S39° 06' 54"E	11.78'	11.85'
C13	25.00'	86°36'31"	N86° 37' 32"E	34.29'	37.79'
C17	100.00'	4°37'56"	S47° 45' 15"E	8.08'	8.08'

THIS INSTRUMENT WAS PREPARED BY:  
 E.C. DEMETER P.S.M. 5179, STATE OF FLORIDA  
**KIMLEY-HORN AND ASSOCIATES, INC**  
 445 24TH STREET, SUITE 200  
 VERO BEACH, FLORIDA 32960  
 LB 696  
 ON MAY 3, 2021



# PRESERVE AT WATERWAY VILLAGE PD - POD V

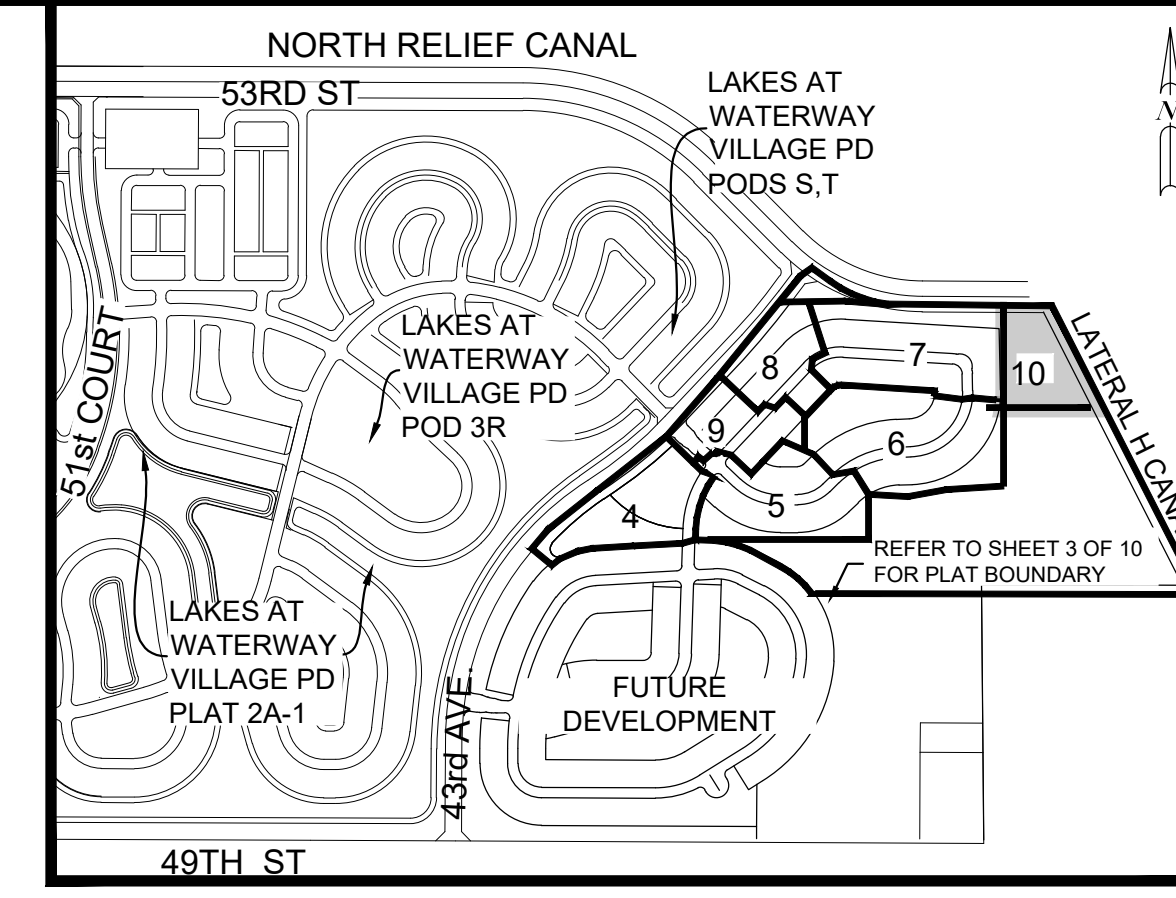
A SUBDIVISION OF A PORTION OF SECTION 15, TOWNSHIP 32 SOUTH, RANGE 39 EAST AND A PORTION OF SECTION 22, TOWNSHIP 32 SOUTH, RANGE 39 EAST, INDIAN RIVER COUNTY, FLORIDA

## LEGEND OF SYMBOLS

---	PLAT BOUNDARY
---	PARCEL LINE
---	DRAINAGE EASEMENT LINE
---	EASEMENT LINE
---	ROAD CENTER LINE
---	SECTION LINE
---	MATCH LINE
##	LOT NUMBER
■	PRM, 4x4 CMD, IRC OR NAIL & DISK STAMPED "PRM KHA LB 696" OR AS NOTED
●	PCP, NAIL AND DISC STAMPED "PCP KHA LB 696"
○	LOT CORNER - 5/8" IRC STAMPED "KHA LB696"

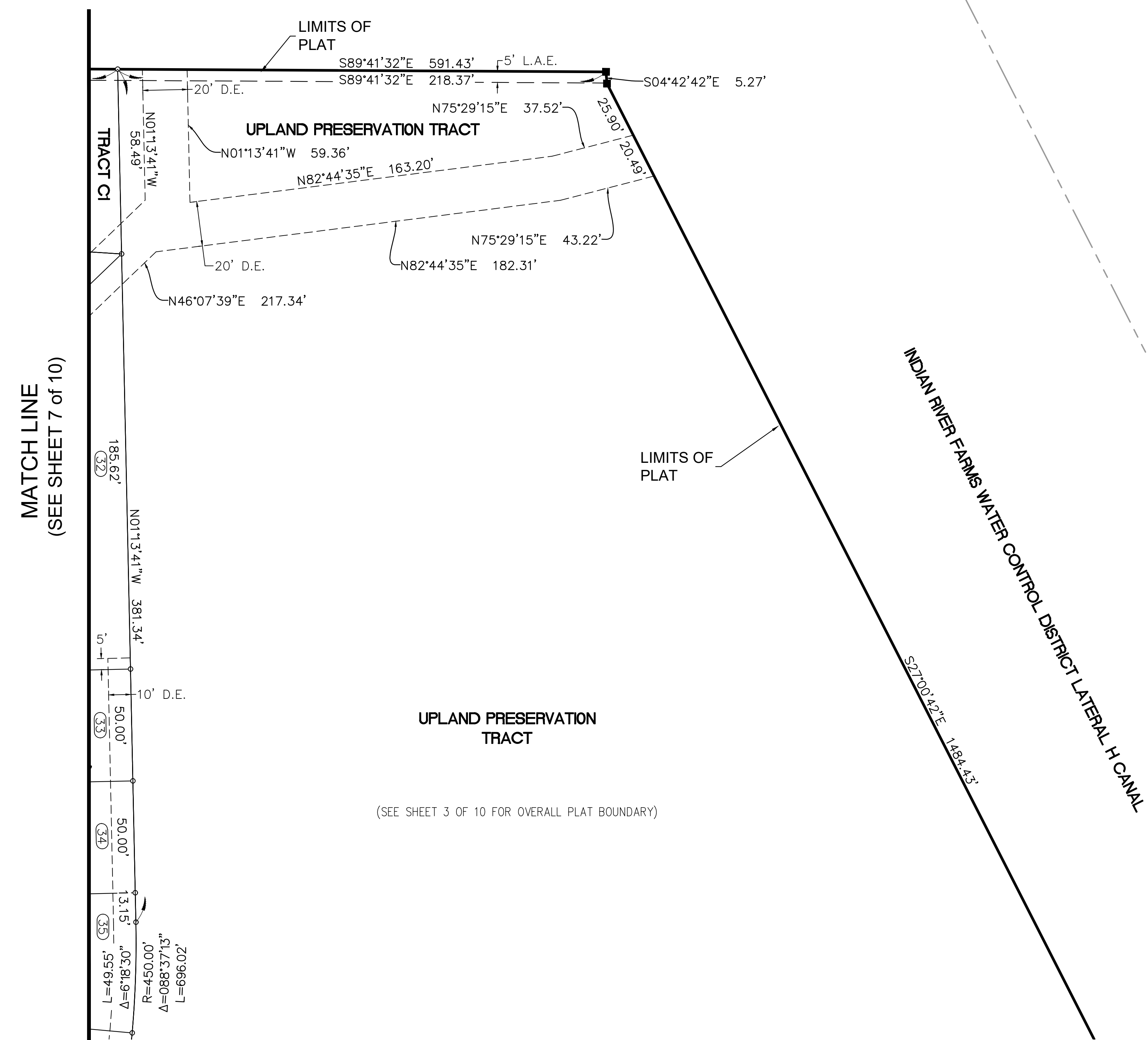
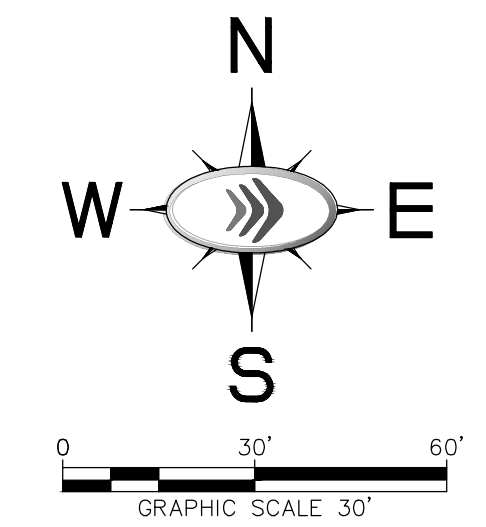
## ABBREVIATIONS

Δ	DELTA (CENTRAL ANGLE)	PT	POINT OF TANGENT
CB	CHORD BEARING	P.O.B.	POINT OF BEGINNING
CCR	CERTIFIED CORNER RECORD	PRM	PERMANENT REFERENCE MONUMENT
CD	CHORD DISTANCE	R	RADIUS
CMD	CONCRETE MONUMENT AND DISK	RAD	RADIAL
D.E.	DRAINAGE EASEMENT	RGE	RANGE
L	ARC LENGTH	R/W	RIGHT-OF-WAY
L.A.E.	LIMITED ACCESS EASEMENT	SEC	SECTION
LB	LICENSED BUSINESS	TWP	TOWNSHIP
N.R.	NON-RADIAL	IRC	IRON ROD WITH CAP
ORB	OFFICIAL RECORDS BOOK	EL.=	ELEVATION
PB	PLAT BOOK	NAVD 88'	NORTH AMERICAN VERTICAL DATUM OF 1988
PCP	PERMANENT CONTROL POINT	U.E.	UTILITY EASEMENT
PG	PAGE	W.S.E.	WATER AND SEWER EASEMENT
PC	POINT OF CURVATURE		
PI	POINT OF INTERSECTION		



KEY MAP  
N.T.S.

PLAT BOOK \_\_\_\_\_  
PAGE \_\_\_\_\_  
CFN \_\_\_\_\_  
CLERK'S FILE NUMBER \_\_\_\_\_



THIS INSTRUMENT WAS PREPARED BY:  
E.C. DEMETER P.S.M. 5179, STATE OF FLORIDA  
**KIMLEY-HORN AND ASSOCIATES, INC**  
445 24TH STREET, SUITE 200  
VERO BEACH, FLORIDA 32960  
LB 696  
ON MAY 3, 2021