

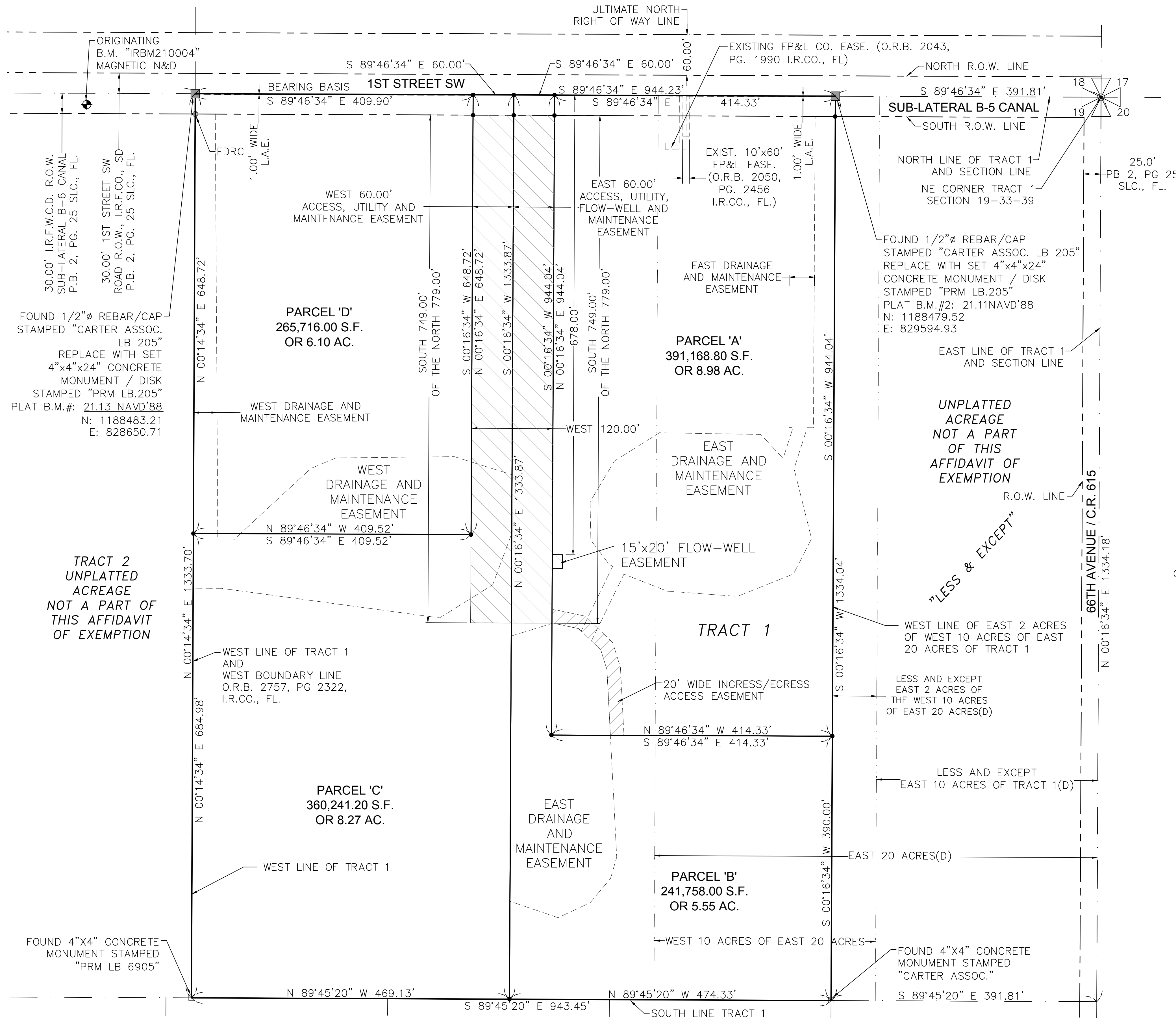
# THREE SOUTHERN OAKS, AFFIDAVIT OF EXEMPTION

BEING A RE-PLAT OF A PORTION OF TRACT 1 OF SECTION 19, TOWNSHIP 33 SOUTH, RANGE 39 EAST, ACCORDING TO THE LAST GENERAL PLAT OF LANDS OF THE INDIAN RIVER FARMS COMPANY, AS RECORDED IN PLAT BOOK 2, PAGE 25, ST. LUCIE COUNTY, FLORIDA; SAID LAND NOW LYING AND BEING IN INDIAN RIVER COUNTY, FLORIDA. A SUBDIVISION UNDER THE AFFIDAVIT OF EXEMPTION PROCESS

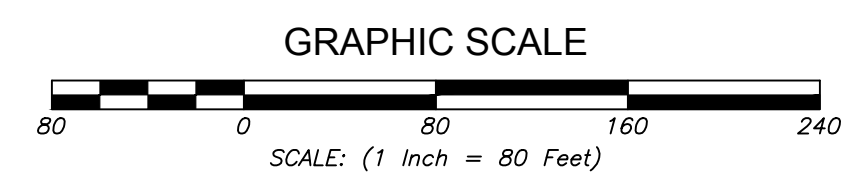
PLAT BOOK: \_\_\_\_\_

PAGE: \_\_\_\_\_

DOCKET NUMBER: \_\_\_\_\_



**NOTICE:** COVENANTS, RESTRICTIONS OR RESERVATIONS AFFECTING THE OWNERSHIP OR USE OF THE PROPERTY SHOWN IN THIS AFFIDAVIT OF EXEMPTION ARE FILED IN OFFICIAL RECORDS BOOK \_\_\_\_\_, PAGE \_\_\_\_\_ OF THE PUBLIC RECORDS OF INDIAN RIVER COUNTY, FLORIDA.



- LEGEND**
- B.M. = BENCH MARK
  - ⊕ = BENCH MARK SYMBOL
  - T.B.M. = TEMPORARY BENCH MARK
  - C.R. = COUNTY ROAD
  - (D) = DEED
  - (O) = OBSERVED
  - (P) = RECORD PLAT DATA
  - I.R.F.W.C.D. = INDIAN RIVER FARMS WATER CONTROL DISTRICT
  - I.R.CO., FL. = INDIAN RIVER COUNTY, FLORIDA
  - I.R.F.CO., SD. = INDIAN RIVER FARMS COMPANY SUBDIVISION
  - SLC., FL. = ST. LUCIE COUNTY, FLORIDA
  - ▨ = EASEMENT
  - N&D = NAIL AND DISK
  - EASE. = EASEMENT
  - P.B. = PLAT BOOK
  - PG. = PAGE
  - O.R.B./O.R. BOOK = OFFICIAL RECORD BOOK
  - F.P.&L. CO. = FLORIDA POWER AND LIGHT COMPANY
  - P.C.P. = PERMANENT CONTROL POINT PARKER KALON (P.K.) NAIL AND BRASS DISK STAMPED "CARTER ASSOC. PCP LB 205"
  - P.R.M. = PERMANENT REFERENCE MONUMENT
  - P.O.B. = POINT OF BEGINNING
  - P.O.C. = POINT OF COMMENCEMENT
  - R.O.W. = RIGHT-OF-WAY
  - L.A.E. = LIMITED ACCESS EASEMENT
  - C.M. = CONCRETE MONUMENT (4"x4")
  - = FOUND CONCRETE MONUMENT (4"x4") AS NOTED
  - FDRC ⊙ = FOUND 1/2" DIAMETER X 18" LONG REBAR WITH CAP, STAMPED "CARTER ASSOC." (TYP.)
  - P.R.M. = SET PERMANENT REFERENCE MONUMENT (4"x4"x24" CONCRETE MONUMENT WITH 2" DIAMETER ALUMINUM DISK STAMPED "CARTER ASSOC. PRM LB 205")
  - = DENOTES 1/2" DIAMETER X 18" LONG REBAR WITH CAP STAMPED "CARTER ASSOC." (TYP.)
  - △ = G.P.S. MONUMENT

NOT A PART OF THIS AFFIDAVIT OF EXEMPTION  
LOT 11

THE FARMS (AFFIDAVIT OF EXEMPTION)  
(O.R.B. 1575, PG. 2085 & O.R.B. 1593, PG. 2236, I.R.CO., FL)

NOT A PART OF THIS AFFIDAVIT OF EXEMPTION  
LOT 15

THIS INSTRUMENT WAS PREPARED BY: DAVID E. LUETHJE, P.S.M.  
DATE: APRIL 13, 2017

**CARTER ASSOCIATES, INC.**  
CONSULTING ENGINEERS AND PROFESSIONAL SURVEYORS AND MAPPERS  
1708 21st. STREET  
VERO BEACH, FLORIDA 32960  
TEL.(772) 562-4191 FAX.(772) 562-7180  
PROJECT # 14-281S

4. REVISE 09/20/2017 CLIENT'S ATTORNEY COMM., FSC  
3. REVISE 08/14/2017 IRC ATTY'S COMM.DATED 7/21/17, FSC  
2. REVISE 06/29/2017 DEDICATION AND ACKNOWLEDGE, FSC  
1. REVISE 05/26/2017 PER IRC COMM.DATED 05/19/17, FSC