

INDIAN RIVER FARMS CO.

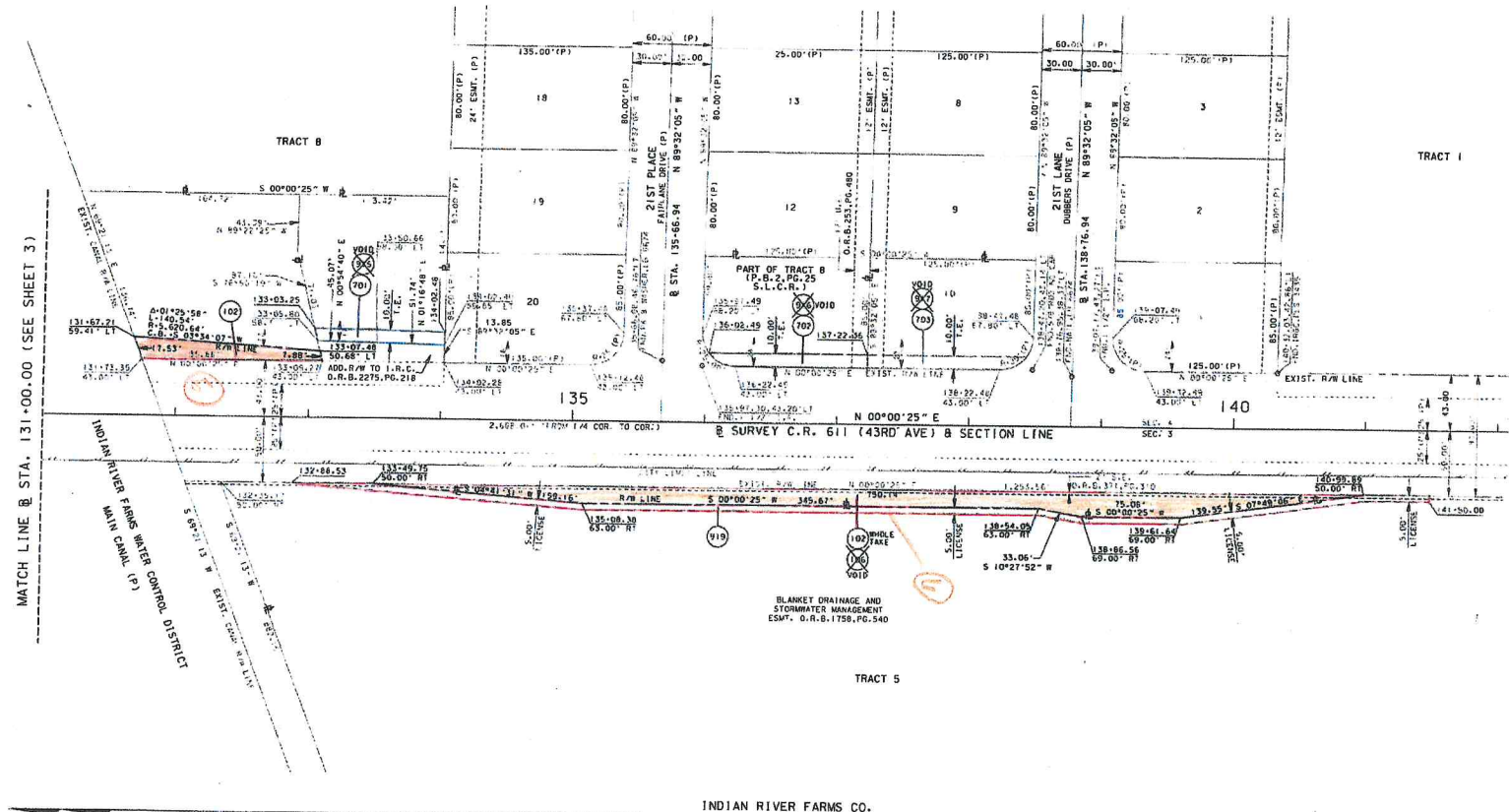
GOLF ACRES SUBDIVISION

INDIAN RIVER FARMS CO.

P.B. 2, PG. 25
(ST. LUCIE COUNTY RECORDS)

P.B. 7, PG. 79

P.B. 2, PG. 25
(ST. LUCIE COUNTY RECORDS)



INDIAN RIVER FARMS CO.

P.B. 2, PG. 25
(ST. LUCIE COUNTY RECORDS)

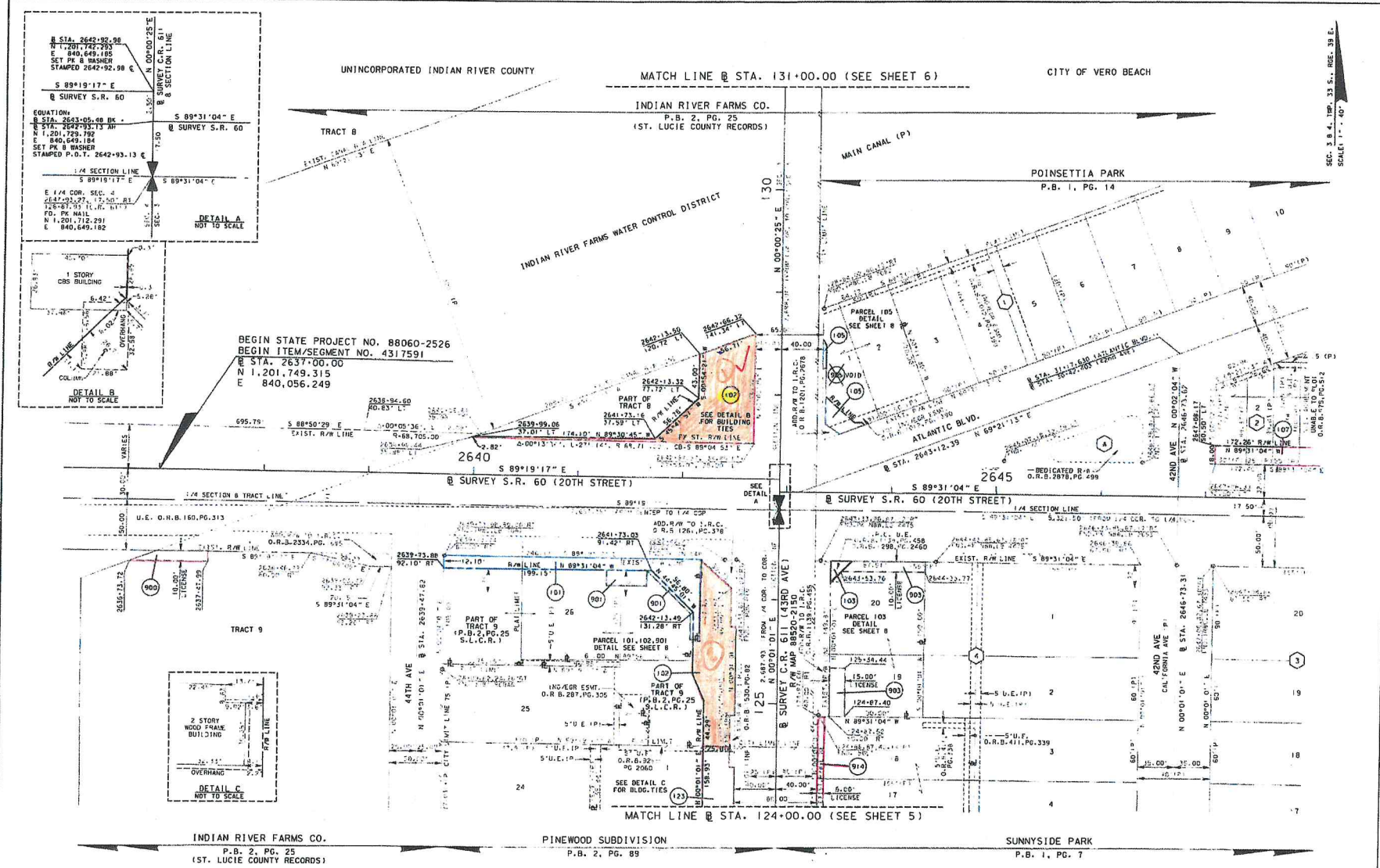
CITY OF VERO BEACH

THIS MAP IS NOT A SURVEY

S.R. 60 (20TH STREET) AT C.R. 611 (43RD AVENUE)

SEE SHEET 1 FOR GENERAL NOTES AND LEGEND

RIGHT OF WAY MAP	FLORIDA DEPARTMENT OF TRANSPORTATION SURVEYING AND MAPPING	APPROVED	DATE	BY	DATE	FED. PROJ. N/A	SECTION 88060-2526	MAPS PREPARED BY	DATE PREP.
		DISTRICT SURVEYOR	4/15/16	T. BROWN	08/2015				
TMS: c:\mopping\4317591\vrwdr106.dgn		DATE	BY	CHECKED	DATE	STATE ROAD NO. 60 (20TH STREET)	INDIAN RIVER COUNTY	F.O.T. DISTRICT 4	SHEET 6 OF 10



UNINCORPORATED INDIAN RIVER COUNTY MATCH LINE @ STA. 131+00.00 (SEE SHEET 6) CITY OF VERO BEACH

INDIAN RIVER FARMS CO. INDIAN RIVER FARMS WATER CONTROL DISTRICT MAIN CANAL (P) POINSETTIA PARK

INDIAN RIVER FARMS CO. PINEWOOD SUBDIVISION SUNNYSIDE PARK

UNINCORPORATED INDIAN RIVER COUNTY SEE SHEET 8 FOR ADDITIONAL INFORMATION CITY OF VERO BEACH THIS MAP IS NOT A SURVEY

SEE SHEET 1 FOR GENERAL NOTES AND LEGEND FOR PARCEL 101, 102, 103, 105, 123, 901 S.R. 60 (20TH STREET) AT C.R. 611 (43RD AVENUE)

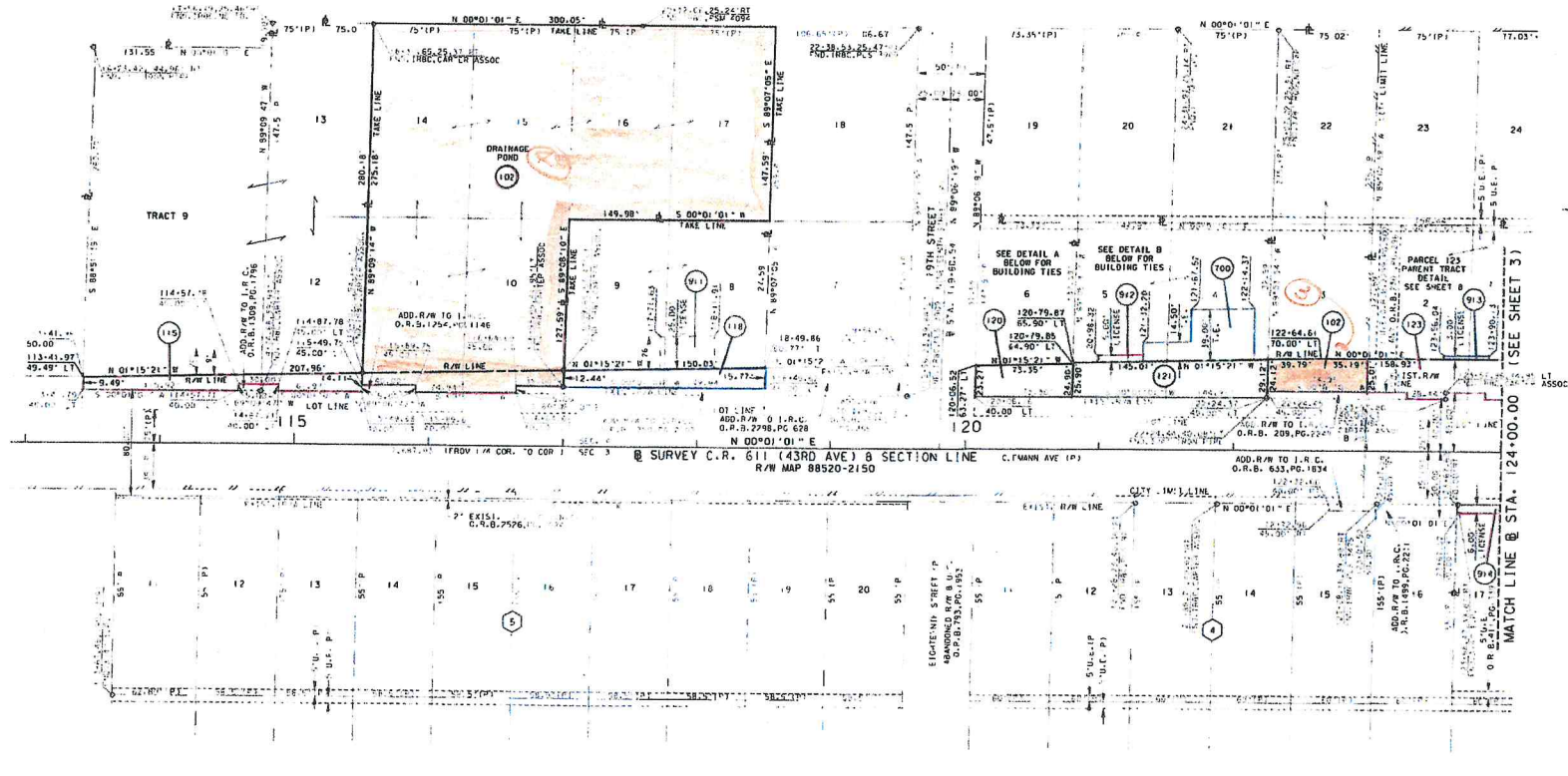
RIGHT OF WAY MAP	FLORIDA DEPARTMENT OF TRANSPORTATION SURVEYING AND MAPPING	APPROVED BY	DATE	BY	DATE	FED. PROJ. N/A	SECTION 88060-2526	MAPS PREPARED BY	DATA SOURCE
		<i>[Signature]</i>	4/15/16	[Initials]	08/2015			STATE ROAD NO. 60 (20TH STREET)	INDIAN RIVER COUNTY
		REVISION	BY	DATE	REVISION	BY	DATE	SCALE: 1" = 40'	
								SHEET 3 OF 10	

T1MS: r:\mapping\v4317591\wdrdt103.dgn

SEC. 2, B. 4, T. 33 S., R. 38 E.
SCALE: 1" = 40'

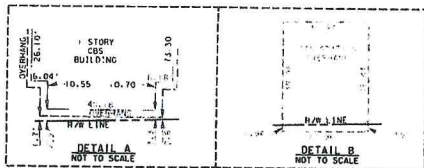
INDIAN RIVER FARMS CO.
P.B. 2, PG. 25
(ST. LUCIE COUNTY RECORDS)

PINEWOOD SUBDIVISION
P.B. 2, PG. 89



SUNNYSIDE PARK
P.B. 1, PG. 7

CITY OF VERO BEACH



THIS MAP IS NOT A SURVEY
S.R. 60 (20TH STREET) AT C.R. 611 (43RD AVENUE)

SEE SHEET 1 FOR GENERAL NOTES AND LEGEND

RIGHT OF WAY MAP	FLORIDA DEPARTMENT OF TRANSPORTATION SURVEYING AND MAPPING	 DATE: 4/15/16	REVISED: 10/15/16	PRELIM: 10/15/16	FED. PROJ. N/A	SECTION 88060-2526	DATE PREPARED BY: [Name]	DATE CHECKED: 10/15/16
			REVISION: [Number]	FINAL: 10/15/16	STATE ROAD NO. 60 (20TH STREET)	INDIAN RIVER COUNTY	F.P. NO. 4317591	SHEET 5 OF 10

T:\MS\pmapplng\4317591\43rd01105.dgn