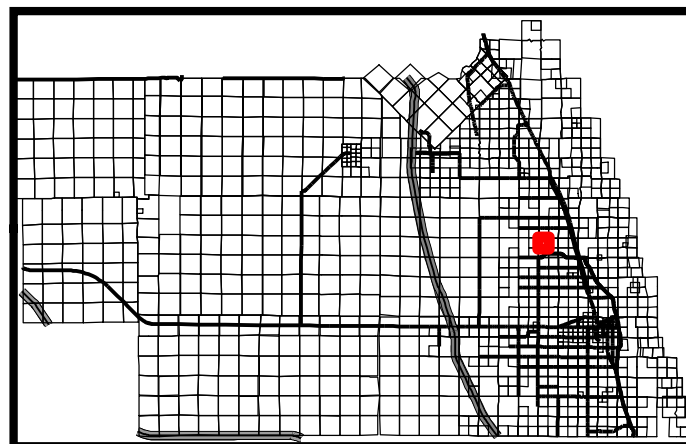


# INDIAN RIVER COUNTY TAX MAP

David C. Nolte  
Property Appraiser

Visit our website at  
[www.ircpa.org](http://www.ircpa.org)

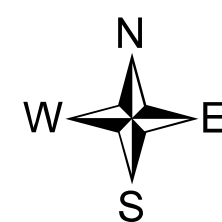


**NW 1/4  
Section 16  
32S-39E**

MAP ID: 17.21

### LEGEND

- |                  |                                     |                      |                              |
|------------------|-------------------------------------|----------------------|------------------------------|
|                  | Parcel Boundaries                   | 00000<br>3000<br>0.0 | Parcel<br>Number             |
|                  | Subdivision Boundaries              | 19                   | Subdivision<br>Number & Name |
|                  | Platted Lots                        | 2                    | Lot Number                   |
|                  | CCCL                                | 7                    | Block Number                 |
|                  | Section Lines                       | TR.1                 | Tract Number                 |
|                  | Tracts & Aliquot Parts              |                      |                              |
|                  | City Limits                         |                      |                              |
|                  | Abandoned ROW                       |                      |                              |
|                  | Street Centerline                   |                      |                              |
|                  | Canals                              |                      |                              |
| <b>Easements</b> |                                     |                      |                              |
|                  | Conservation                        |                      |                              |
|                  | Florida Power & Light               |                      |                              |
|                  | Gas Lines                           |                      |                              |
|                  | Ingress - Egress<br>- Abnd. Streets |                      |                              |
|                  | Undefined                           |                      |                              |



1 inch = 200 feet

### INFORMATIONAL PLAT - NOT A SURVEY

The information contained herein is taken from reliable sources  
However, its accuracy is not guaranteed

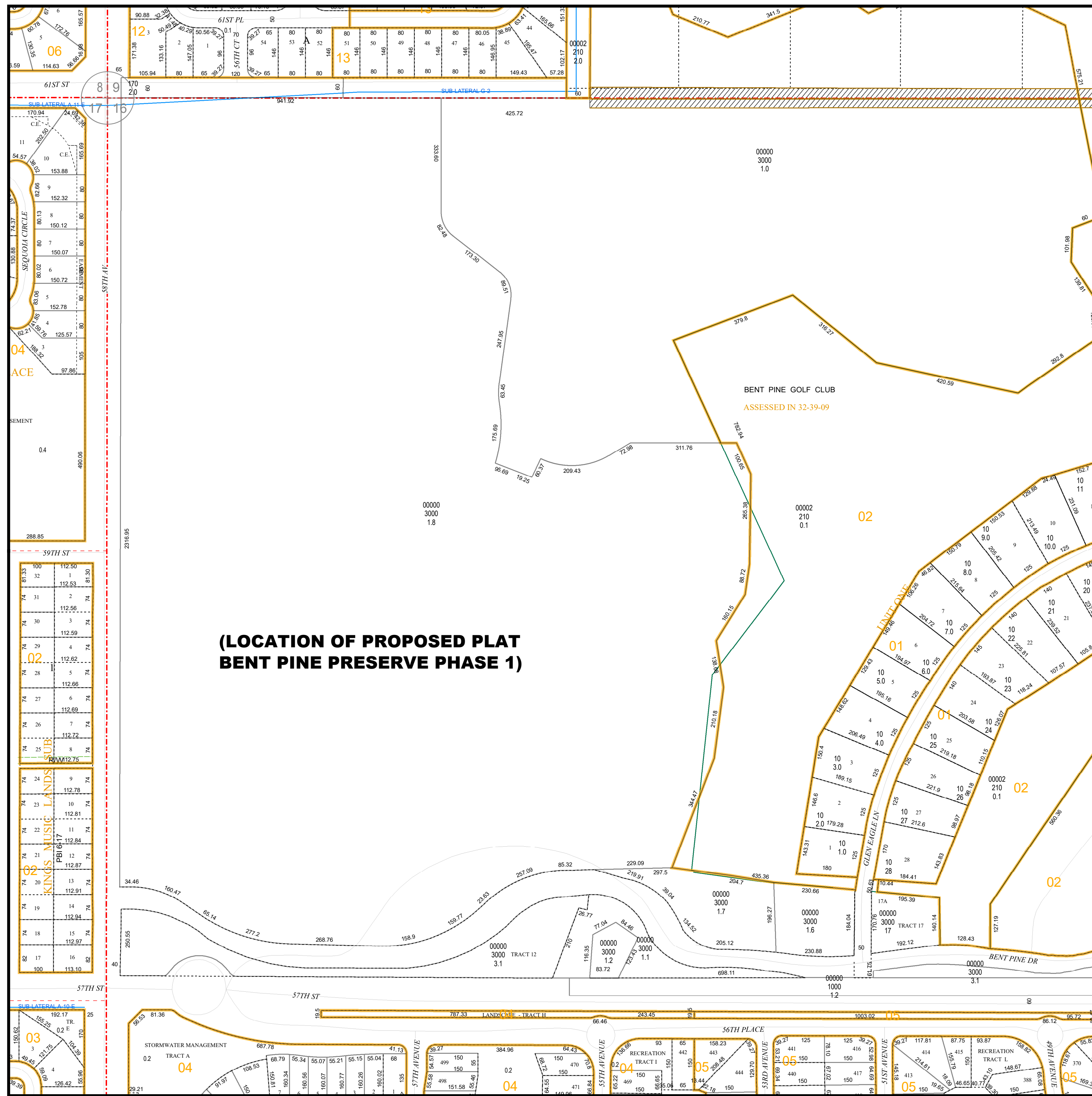
State Plane Coordinates, Florida East Zone, NAD83 Datum

Date: 9/19/2016

**NW 1/4**

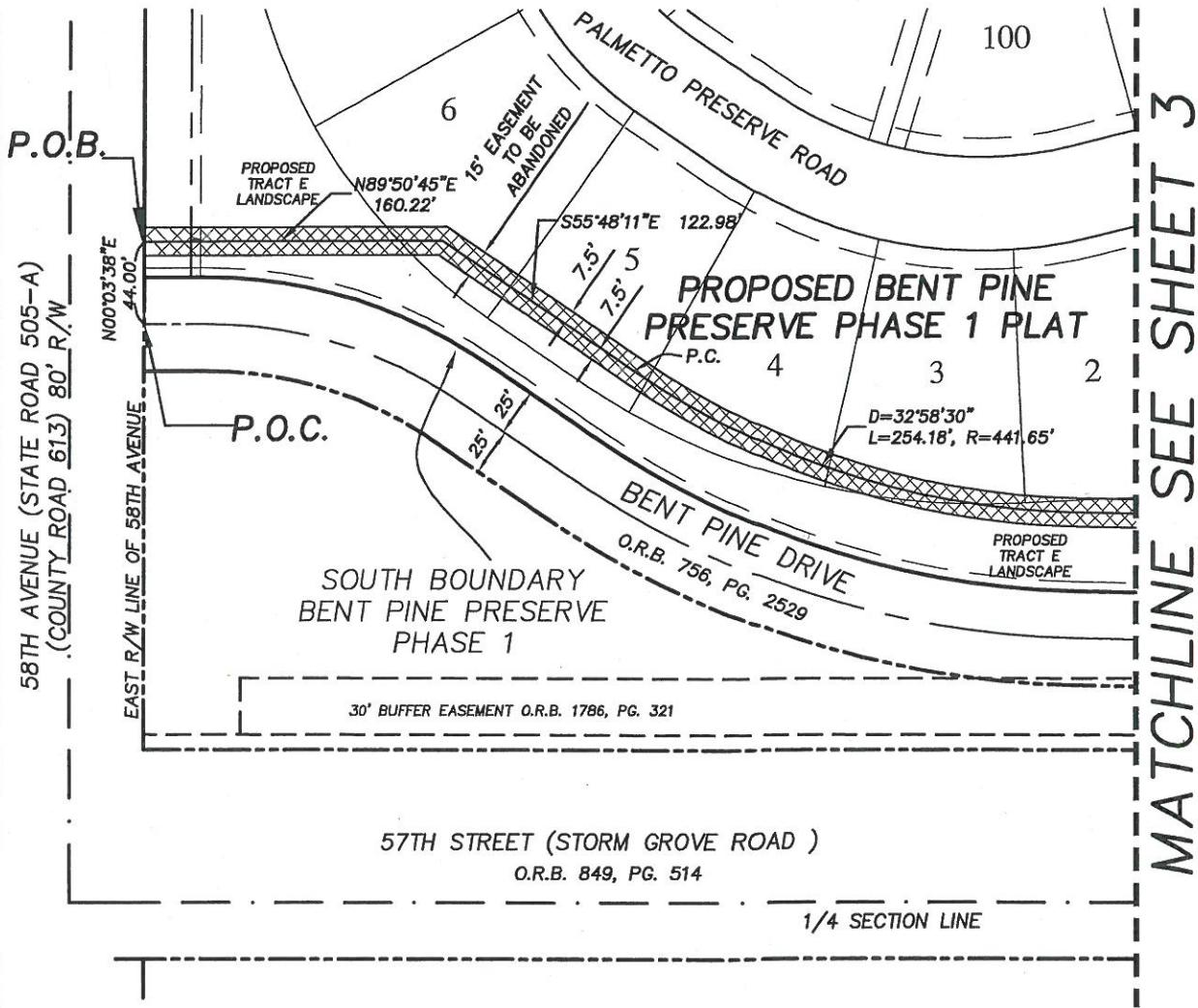
**Section 16**

**32S-39E**



**(LOCATION OF PROPOSED PLAT  
BENT PINE PRESERVE PHASE 1)**

**Legal Description and Sketch  
for the Abandonment of an Easement  
Lying in Section 16, Township 32 South,  
Range 39 East, Indian River County, Florida**



Sheet 2 of 4  
Not Valid Without All Sheets

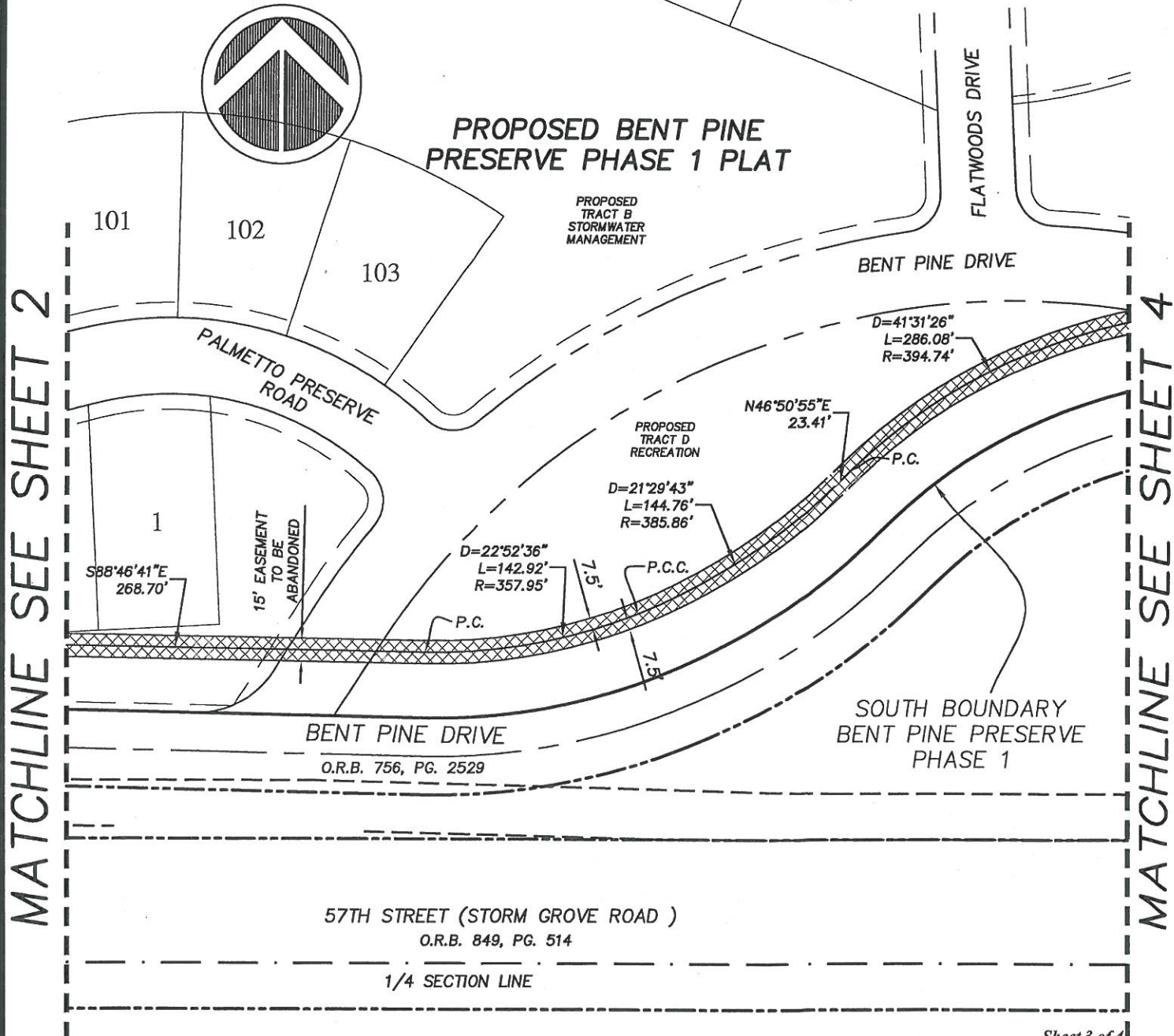
SKETCH OF LEGAL DESCRIPTION "This is NOT a Boundary Survey"	Drawn by: CJG	Checked by: DMT	File name: 7054	Date: 07/10/17	Scale: 1"=100'	Drawing Name: 7054EASEABAN
--	------------------	--------------------	--------------------	-------------------	-------------------	-------------------------------



**Masteller, Moler & Taylor, Inc.**  
PROFESSIONAL SURVEYORS AND MAPPERS  
LAND SURVEYING BUSINESS #4644  
 1655 27th Street, Suite 2 Vero Beach, Florida 32960  
 Phone: (772) 564-8050 Fax: (772) 794-0647

NOT VALID WITHOUT THE SIGNATURE AND THE ORIGINAL RAISED SEAL OF A FLORIDA LICENSED SURVEYOR AND MAPPER.  
  
 DAVID TAYLOR P.L.S. 5243

# Legal Description and Sketch for the Abandonment of an Easement Lying in Section 16, Township 32 South, Range 39 East, Indian River County, Florida



Sheet 3 of 4  
Not Valid Without All Sheets

SKETCH OF LEGAL DESCRIPTION "This is NOT a Boundary Survey"	Drawn by: CJG	Checked by: DMT	File name 7054	Date 07/10/17	Scale 1"=100'	Drawing Name 7054EASEABAN
--	------------------	--------------------	-------------------	------------------	------------------	------------------------------

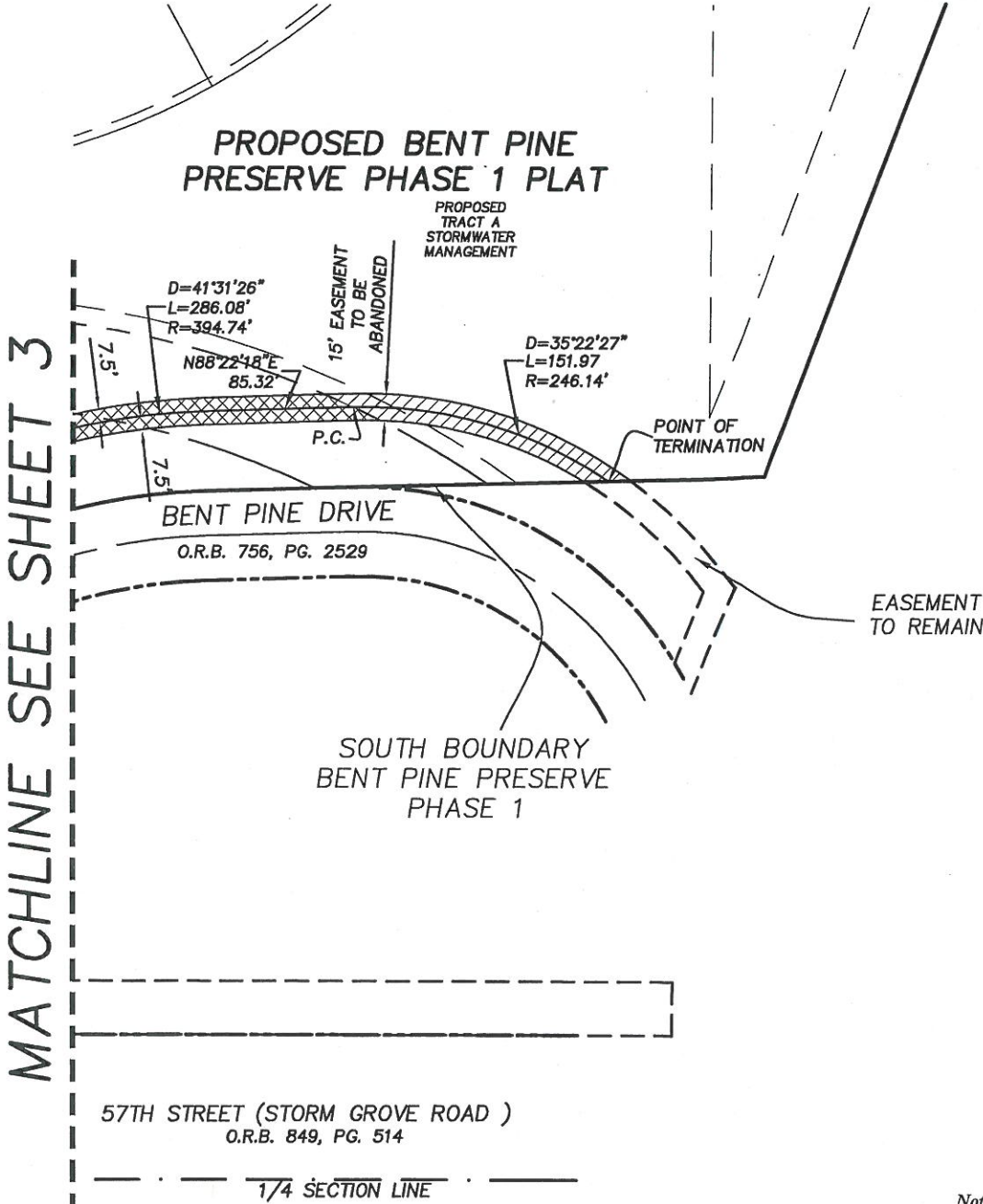
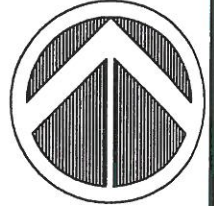


**Masteller, Moler & Taylor, Inc.**  
PROFESSIONAL SURVEYORS AND MAPPERS  
LAND SURVEYING BUSINESS #4644  
1655 27th Street, Suite 2 Vero Beach, Florida 32960  
Phone: (772) 564-8050 Fax: (772) 794-0647

NOT VALID WITHOUT THE SIGNATURE AND  
THE ORIGINAL RAISED SEAL OF A FLORIDA  
LICENSED SURVEYOR AND MAPPER.

*David M. Bl*  
DAVID TAYLOR P.L.S. 5243

**Legal Description and Sketch  
for the Abandonment of an Easement  
Lying in Section 16, Township 32 South,  
Range 39 East, Indian River County, Florida**



Sheet 4 of 4  
Not Valid Without All Sheets

SKETCH OF LEGAL DESCRIPTION "This is NOT a Boundary Survey"	Drawn by: CJG	Checked by: DMT	File name: 7054	Date: 07/10/17	Scale: 1"=100'	Drawing Name: 7054EASEABAN
--	------------------	--------------------	--------------------	-------------------	-------------------	-------------------------------



**Masteller, Moler & Taylor, Inc.**  
PROFESSIONAL SURVEYORS AND MAPPERS  
LAND SURVEYING BUSINESS #4644  
 1655 27th Street, Suite 2 Vero Beach, Florida 32960  
 Phone: (772) 564-8050 Fax: (772) 794-0647

NOT VALID WITHOUT THE SIGNATURE AND THE ORIGINAL RAISED SEAL OF A FLORIDA LICENSED SURVEYOR AND MAPPER.  
  
 DAVID TAYLOR P.L.S. 2243