

CHANGE ORDER

PROJECT: South Oslo Road WTP Improvements

No. 2

DATE OF ISSUANCE: November 30, 2022 EFFECTIVE DATE: _____

OWNER: Indian River County

OWNER's Contract No.: 2021026

Project No.: 044572102

CONTRACTOR: TLC Diversified, Inc

ENGINEER: Kimley-Horn & Associates, Inc.

You are directed to make the following changes in the Contract Documents:

Description: This change order instructs the Contractor to furnish/install the following for the lump sum of \$150,020.17:

1. 14" and 30" line stops on existing high service pump suction line. Replacement of three (3) existing 14" gate valves on the high service pump suction line that do not hold.
2. Emergency repair of the leak in the existing 18" transfer piping.
3. Removal of buried concrete vault based on unforeseen conditions in the field.

Attachments: Quotations

| CHANGE IN CONTRACT PRICE | CHANGE IN CONTRACT TIME |
|--|---|
| Original Contract Price \$ 10,665,515.65 | Original Contract Times: Substantial Completion: 760 Ready for final payment: 820 |
| Net changes from previous Change Orders No. <u>1</u> \$483,563.83 | Net change from previous Change Orders: No. ___ to No. ___ |
| Contract Price prior to this Change Order \$ 11,149,079.48 | Contract Time prior to this Change Order Substantial Completion: 760 Ready for final payment: 820 Days or dates |
| Net Increase (decrease) in this Change Order \$ 150,020.17 | Net Increase in this Change Order 0 days |
| Contract Price with all approved Change Orders \$ 11,299,099.65 | Contract Time with all approved Change Orders Substantial Completion: 760 Ready for final payment: 820 Days or dates |

RECOMMENDED:

By: *[Signature]* Kimley-Horn
Engineer (Authorized Signature)

APPROVED:

By: _____
Owner (Authorized Signature)

ACCEPTED:

By: _____
Contractor (Authorized Signature)

Date: 11-30-2022

Date: _____

Date: _____

EJCDC No. C-700 (2002 Edition)

Prepared by the Engineers Joint Contract Documents Committee and endorsed by The Associated General Contractors of America.



Kimley-Horn
1920 Wekiva Way, Suite 200
West Palm Beach, FL 33411

20-November--2022

Attn: Mr. Nick Black, P.E. Nick.Black@Kimley-Horn.com

Reference: Request for 14" Valve Replacement, Repair of 18" Pipe and Removal of Vault, 30" and 30" and 14" Line Stops.

Dear Mr. Black,

Please find a quotation for the changes requested as reference above.

| | | |
|-----------------------------|---|--------------|
| Labor = | \$ 9,450.00 | |
| Material = | \$ 42,747.45 | |
| Subcontract = | \$ 65,797.56 | |
| Equipment = | \$ 8,907.00 | |
| Other= | \$ 200.00 | |
| Labor Burden = | \$ 3,307.50 | |
| Tax = | \$ 3,206.45 | |
| OH & P subs 5% = | \$ 3,289.88 | |
| OH & P @ Self Perform 15% = | \$ 10,172.76 | |
| Subtotal = | \$ 147,078.60 | |
| Bond = | \$ 0 Using Allowance already | \$2,941.57 |
| Total ADD = | \$ 147,078.60 | \$150,020.17 |

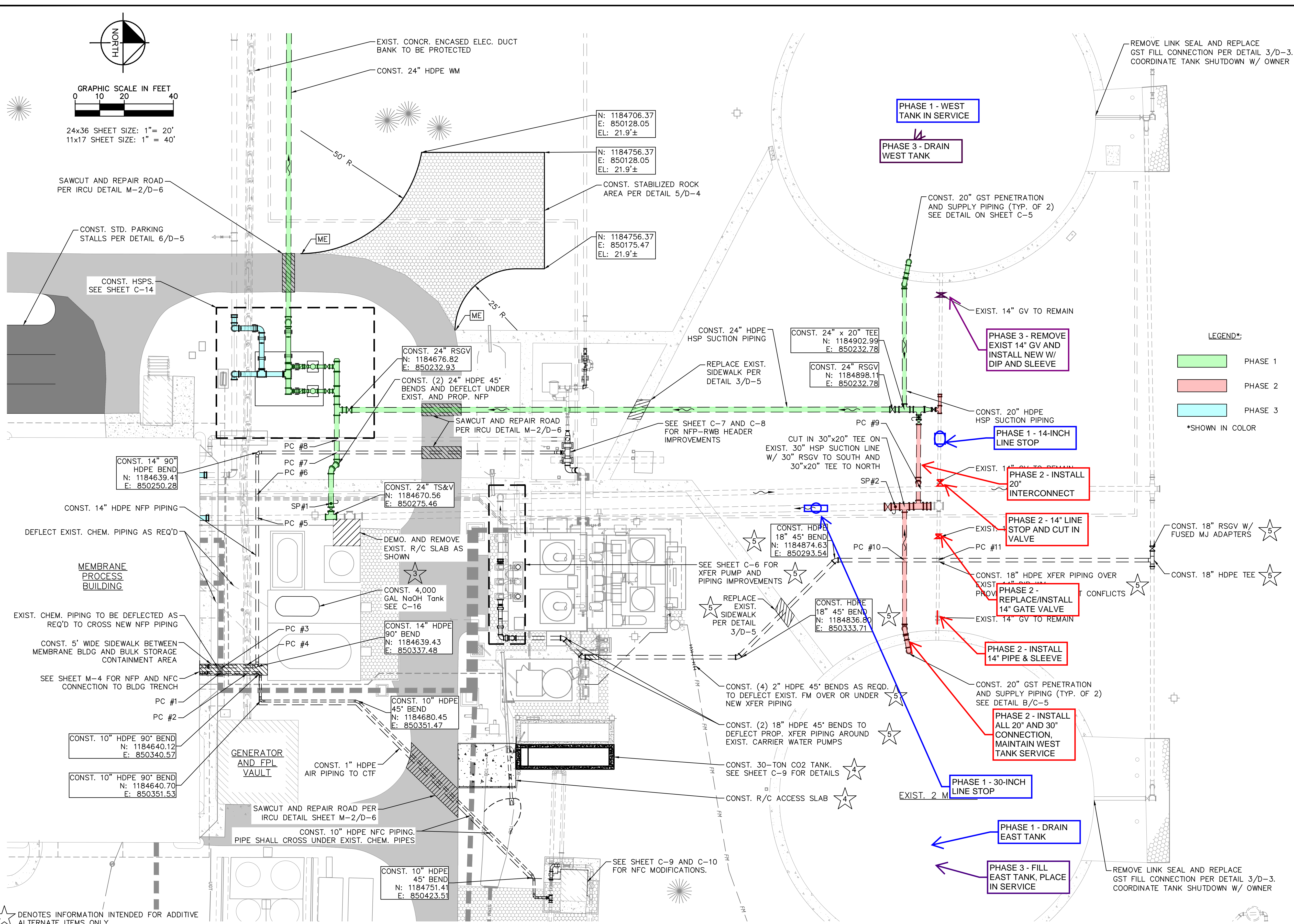
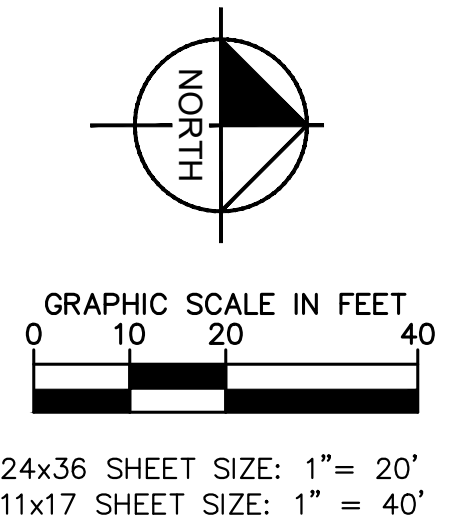
BOND HAS BEEN ADDED AS THIS WILL RESULT IN CHANGE IN CONTRACT PRICE.

With the current supply chain delays that have been discussed in the project meetings it is difficult to quantify the additional time required to quote this change. TLC is therefore reserving our rights to additional time for the project that will be determined at a later date. Please provide your acceptance of this additional work and issue a change order so that TLC can release the required items for production.

Sincerely Yours,

John P. Elder (Project Manager)

K:\WPB_Civil\044572100 - South OSLO WTP Improvements\PROPOSED YARD PIPING PLAN.dwg
 K:\WPB_Civil\044572100 - South OSLO WTP Improvements\PROPOSED YARD PIPING PLAN March 19, 2021 06:37:48pm
 This document, together with the concepts and designs presented herein, is intended only for the specific purpose and client for which it was prepared. Reuse of any information contained herein without written authorization and approval by Kimley-Horn and Associates, Inc. shall be without liability to Kimley-Horn and Associates, Inc.



PIPE CROSSING #1
 PROP. 10" HDPE NFC PIPING TO CROSS EXIST. CHEM. TRENCH
 GRADE = 23.94'±
 BOT OF NFP PIPING EL. = 21.10'±
 TOP OF CHEM. TRENCH EL. = 21.75'±
 CLEAR. = CONFLICT, DEFLECT CHEM. PIPING AS REQ'D

PIPE CROSSING #2
 PROP. 10" HDPE NFC PIPING TO CROSS OVER EXIST. CONCR. ENCASED DUCT BANK
 GRADE = 23.79'±
 BOT OF NFC PIPING EL. = 21.10'±
 TOP OF DUCT BANK EL. = 21.00'±
 CLEAR. = 0.10'±
 CONST. NEW SIDEWALK IN BETWEEN MEMBRANE BLDG AND SA BULK STORAGE

PIPE CROSSING #3
 PROP. 14" HDPE NFP PIPING TO CROSS EXIST. CHEM. TRENCH
 GRADE = 23.94'±
 BOT OF NFP PIPING EL. = 21.10'±
 TOP OF CHEM. TRENCH EL. = 21.75'±
 CLEAR. = CONFLICT, DEFLECT CHEM. PIPING AS REQ'D

PIPE CROSSING #4
 PROP. 14" HDPE NFP PIPING TO CROSS OVER EXIST. CONCR. ENCASED DUCT BANK
 GRADE = 23.93'±
 BOT OF NFP PIPING EL. = 21.10'±
 TOP OF DUCT BANK EL. = 21.00'±
 CLEAR. = 0.10'±
 CONST. NEW SIDEWALK IN BETWEEN MEMBRANE BLDG AND SA BULK STORAGE

PIPE CROSSING #5
 PROP. 14" HDPE NFP PIPING TO CROSS OVER PROP. 24" HSP SUCTION PIPING
 GRADE = 23.88'±
 BOT OF NFP PIPING EL. = 18.73'±
 TOP OF HSP SUCTION PIPING EL. = 18.19'±
 CLEAR. = 0.54'±

PIPE CROSSING #6
 PROP. 14" HDPE NFP PIPING TO CROSS OVER EXIST. CHEM. CORRIDOR TO CROSS OVER
 GRADE = 23.74'±
 BOT OF NFP PIPING EL. = 18.73'±
 TOP OF CHEM. CORRIDOR EL. = 20.10'±
 CLEAR. = CONFLICT, DEFLECT CHEM. PIPING AS REQ'D

PIPE CROSSING #7
 PROP. 14" HDPE NFP PIPING TO CROSS OVER PROP. 24" HSP SUCTION PIPING
 GRADE = 22.82'±
 BOT OF NFP PIPING EL. = 18.73'±
 TOP OF HSP SUCTION PIPING EL. = 16.35'±
 CLEAR. = 2.38'±

PIPE CROSSING #8
 PROP. 24" HSP SUCTION PIPING, GRADE = 22.79'±
 EXIST. 18" HDPE NFP PIPING TO CROSS UNDER
 BOT OF NFP PIPING EL. = 17.8'±
 TOP OF HSP SUCTION PIPING EL. = 16.35'±
 CLEAR. = 1.41'±

PIPE CROSSING #9
 PROP. 20" GST EFFLUENT LINE, GRADE = 22.60'±
 EXIST. 24" XFER TO CROSS OVER
 BOT OF XFER EL. = 18.47'±
 TOP OF GST EFFLUENT LINE EL. = 17.9'±
 CLEAR. = 0.57'±

PIPE CROSSING #10
 PROP. 18" HDPE GST INFLUENT LINE TO CROSS OVER PROP. 20" GST EFFLUENT LINE
 GRADE = 22.58'±
 BOT OF XFER EL. = 19.00'±
 TOP OF GST EFFLUENT LINE EL. = 18.31'±
 CLEAR. = 0.69'±

PIPE CROSSING #11
 PROP. 18" HDPE XFER TO CROSS OVER EXIST. 14" GST EFFLUENT LINE
 GRADE = 23.00'±
 BOT OF XFER EL. = 19.00'±
 TOP OF GST EFFLUENT LINE EL. = 18.26'±
 CLEAR. = 0.73'±

LEGEND:
 PHASE 1 (Green)
 PHASE 2 (Red)
 PHASE 3 (Blue)
 *SHOWN IN COLOR

★ DENOTES INFORMATION INTENDED FOR ADDITIVE ALTERNATE ITEMS ONLY

Kimley»Horn

© 2021 KIMLEY-HORN AND ASSOCIATES, INC.
 1920 WEKIVA WAY SUITE 200, WEST PALM BEACH, FL 33411
 PHONE: 561-845-0665 FAX: 561-863-8175
 WWW.KIMLEY-HORN.COM CA 00000696

KHA PROJECT
 044572100
 DATE
 MAR 2021
 SCALE AS SHOWN
 DESIGNED BY NPOB
 DRAWN BY JTV
 CHECKED BY MDM

SOUTH OSLO ROAD WTP IMPROVEMENTS
 PREPARED FOR
INDIAN RIVER COUNTY UTILITIES DEPARTMENT
 INDIAN RIVER COUNTY, FLORIDA

LICENSED PROFESSIONAL
 NICHOLAS P.O. BLACK
 FLORIDA LICENSE NUMBER
 84908

PROPOSED YARD PIPING PLAN

SHEET NUMBER

| No. | REVISIONS | DATE | BY |
|-----|-----------|------|----|
| | | | |